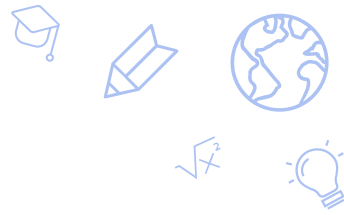


State of the SPCSA

January 23, 2026

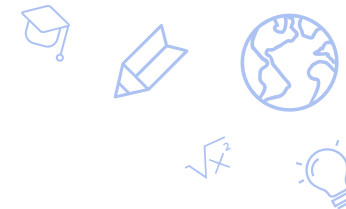


Overview

- Overview of the SPCSA
- Overview of the 2025-2030 Strategic Plan
- Progress in Meeting our 2025-2030 Strategic Goals

SPCSA Overview





Creation and Purpose

The purpose of the State Public Charter School Authority is to:

“ **Authorize charter schools of high-quality** throughout this State with the goal of expanding the opportunities for pupils in this State, including, without limitation, pupils who are at risk.

Provide oversight to the charter schools that it sponsors to ensure that those charter schools maintain high educational and operational standards, preserve autonomy and safeguard the interests of pupils and the community.

Serve as a model of the best practices in sponsoring charter schools and foster a climate in this State in which all high-quality charter schools, regardless of sponsor, can flourish. ”

NRS 388A.150



About the State Public Charter School Authority

10

Voting member board appointed by the Governor, Senate Majority Leader, Speaker of the Assembly, State Board of Education, and Charter School Association of Nevada. A charter school student is the 10th board member and is nonvoting.

42

Full time employees who conduct oversight of schools and execute Local Education Agency responsibilities (ex. monitoring, technical assistance, managing grants).

3

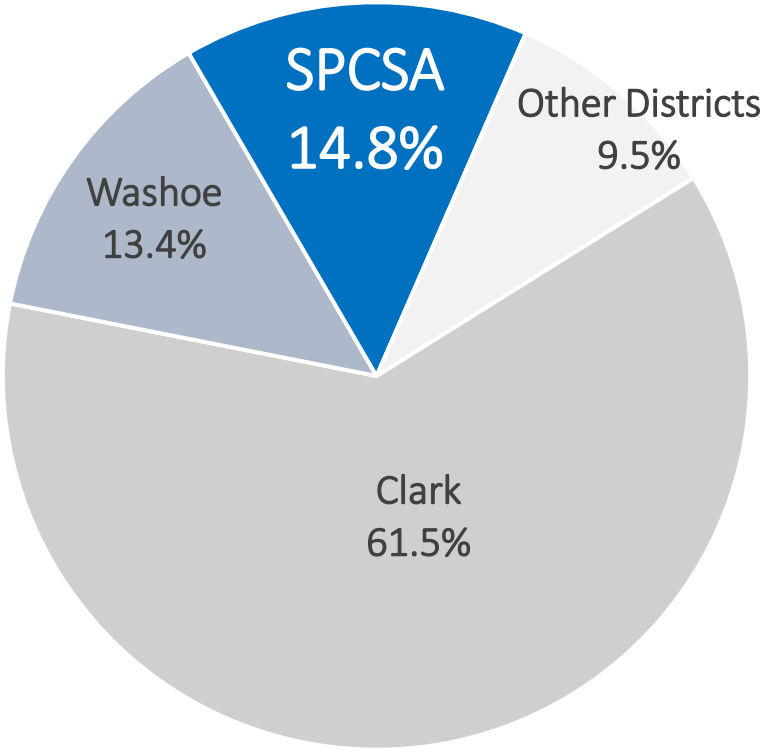
Offices, one located in Carson City, Reno and Las Vegas.

\$49.8M

Estimated pass-through of annual federal and state grants to schools for FY 2025 (excluding emergency funding)

Overview of Schools and Students Served

There are 90 charter school campuses sponsored by the SPCSA located across five counties: Churchill, Clark, Elko, Washoe, and White Pine. Of the school campuses sponsored by the SPCSA, about 86% are located in Clark County.



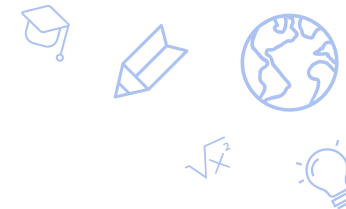
Entity	# Enrolled	% of State
STATE	473657	-
Clark	291587	61.5%
SPCSA	70534	14.8%
Washoe	63655	13.4%
Elko	9293	1.9%
Lyon	9060	1.9%
Carson City	7281	1.5%
Nye	5794	1.2%
Douglas	4745	1.0%
Humboldt	3176	0.6%
Churchill	3145	0.6%
White Pine	1243	0.2%
Lander	1047	0.2%
Lincoln	945	0.1%
Pershing	647	0.1%
Mineral	520	0.1%
Storey	408	<0.1%
Eureka	300	<0.1%
University	171	<0.1%
Esmeralda	69	<0.1%
Correctional	37	<0.1%



New Charter School Campuses

- The SPCSA has opened 20* New Charter School Campuses in the last five years
 - 3 New Charter School Campuses in the 2021-22 School Year
 - 8 New Charter School Campuses in the 2022-23 School Year
 - 3 New Charter School Campuses in the 2023-24 School Year
 - 2 New Charter School Campuses in the 2024-25 School Year
 - 4 New Charter School Campuses in the 2025-26 School Year
- 81% of the New Charter School Campuses are currently Title I Schools

*2021-22 includes Beacon Academy's second campus (Sahara), which provides the in-person portion of their hybrid learning model. Students may attend either of Beacon's campuses. It also includes TEACH LV, which closed. 2022-23 includes two schools that closed (Battle Born and pilotED). 2023-24 includes one school that closed (Eagle NV). 2025-26 includes the Mater Academy Cactus Park campus following the closure of pilotEd Cactus Park.



Charter School Closures

- Four charter schools have closed in the previous two school years:
 - Eagle Charter School: Charter revoked by the SPCSA at the end of the 2023-2024 school year.
 - TEACH Las Vegas: Voluntarily surrendered its contract at the end of the 2023-2024 school year.
 - Battle Born Academy: Voluntarily surrendered its contract at the end of the 2024-2025 school year.
 - pilotEd Cactus Park: Entered into an acquisition agreement with Mater Academy at the end of the 2024-2025 school year.
- Upcoming school closures:
 - Nevada Prep Charter School: Nonrenewed by the SPCSA board at the end of the 2025-2026 school year.

SPCSA-Sponsored Schools

By offering a variety of school models, the SPCSA enables Nevada families to choose schools that best align with the needs and interests of their children.

- Arts Integration
- Montessori
- Bi-lingual education
- Career and Technical Education
- Alternative High School Serving Under-Credited Students
- Schools aimed to meet the needs of young women
- Dual Enrollment High Schools
- Online or Blended Learning
- Classical Education
- STEM/STEAM
- Project-based learning



Strategic Plan

2025 through 2030





Vision

Equitable access to diverse, innovative, and high-quality public schools for every Nevada student.

Mission

The SPCSA sponsors, supports, and oversees dynamic and responsive public charter schools that prepare all students for academic, social, and economic success.

STUDENT FOCUSED

We put what is best for students at the center of our work and honor the critical role that communities play in student success.



LEADERSHIP

We earn the trust of stakeholders, including state leaders, other state agencies, and charter schools, by holding our agency to the highest standards and investing in our growth and development.

EQUITY & DIVERSITY

We are committed to ensuring equitable access for students from all backgrounds and value the voices of all members of our community.



EXCELLENCE THROUGH IMPROVEMENT

We establish clear, high expectations and constantly seek growth for ourselves and foster improvement for our schools.

TRANSPARENCY

We promote transparent and open communication and make school academic, financial, and organizational performance data accessible to all stakeholders.

ACCOUNTABLE AUTONOMY

We give our charter schools the autonomy to innovate in the best interests of students while holding them accountable for academic results, financial performance, and legal compliance, so that students, families, and taxpayers can be confident in the quality of the schools we sponsor.

Five-Year Goals

- ✓ Provide communities with access to excellent schools that students and families want to attend
- ✓ Provide equitable access to charter schools
- ✓ The SPCSA is committed to being a responsive organization

Strategies



Proactive Oversight



Strategic Growth



Expanded Support



Recognize Progress



Goal 1

Provide communities with access to excellent schools that students and families want to attend

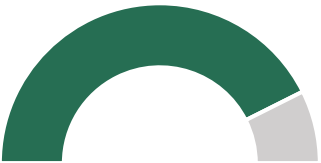
The SPCSA aims for all sponsored schools to meet academic, organizational and financial performance standards.



SPCSA-sponsored schools continue to make academic gains



Nevada School Star Ratings (2024-25 School Year)

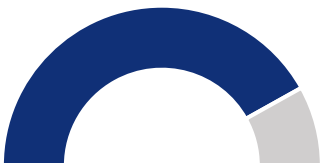


85%
of SPCSA schools earning
a 3-Star or better on the
NSPF (up 12%)



69%
of SPCSA are rated as 4- or
5-star schools (up 17%)

Graduation Rates (Class of 2024)



82.6%
4-year graduation rate
(down 0.7% over last year)

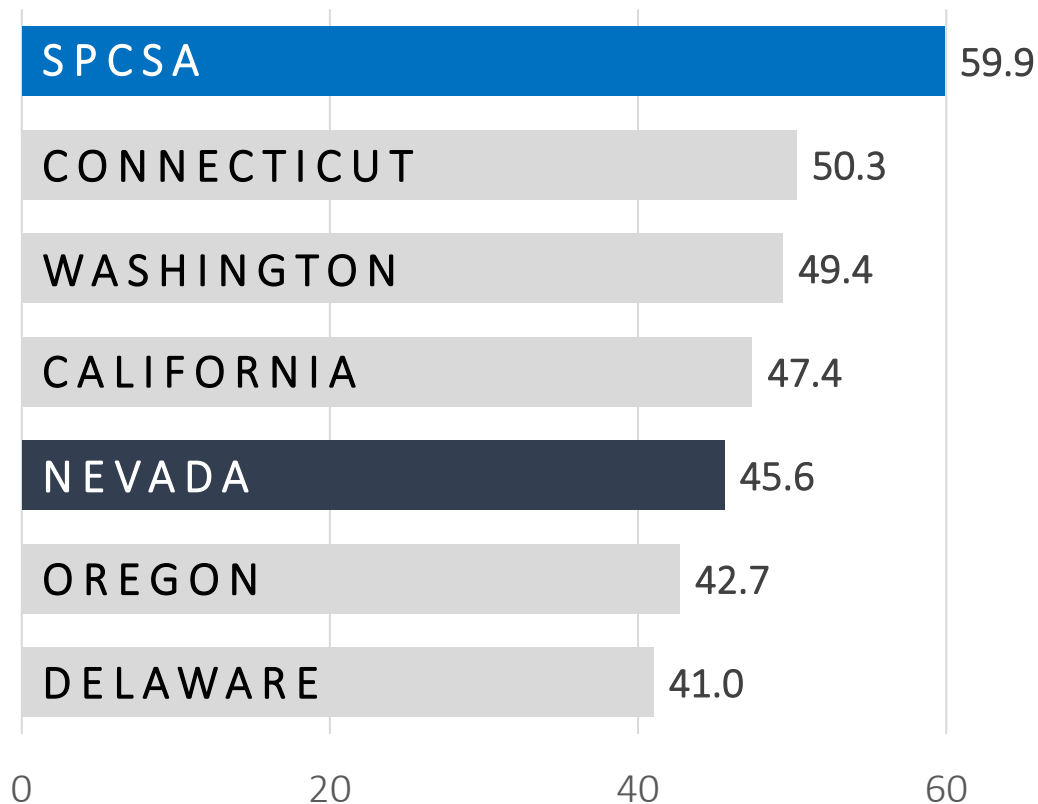
25 of 28 high schools
exceeded the statewide graduation rate



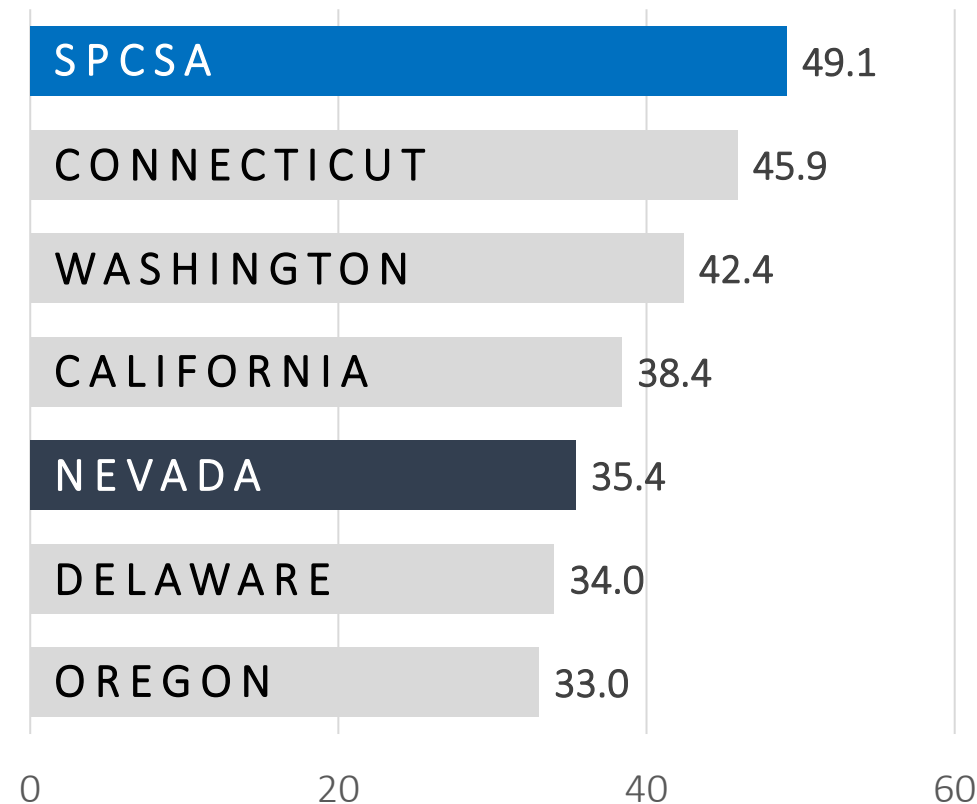
SPCSA-Sponsored Schools Outperform Other States in SBAC Proficiency



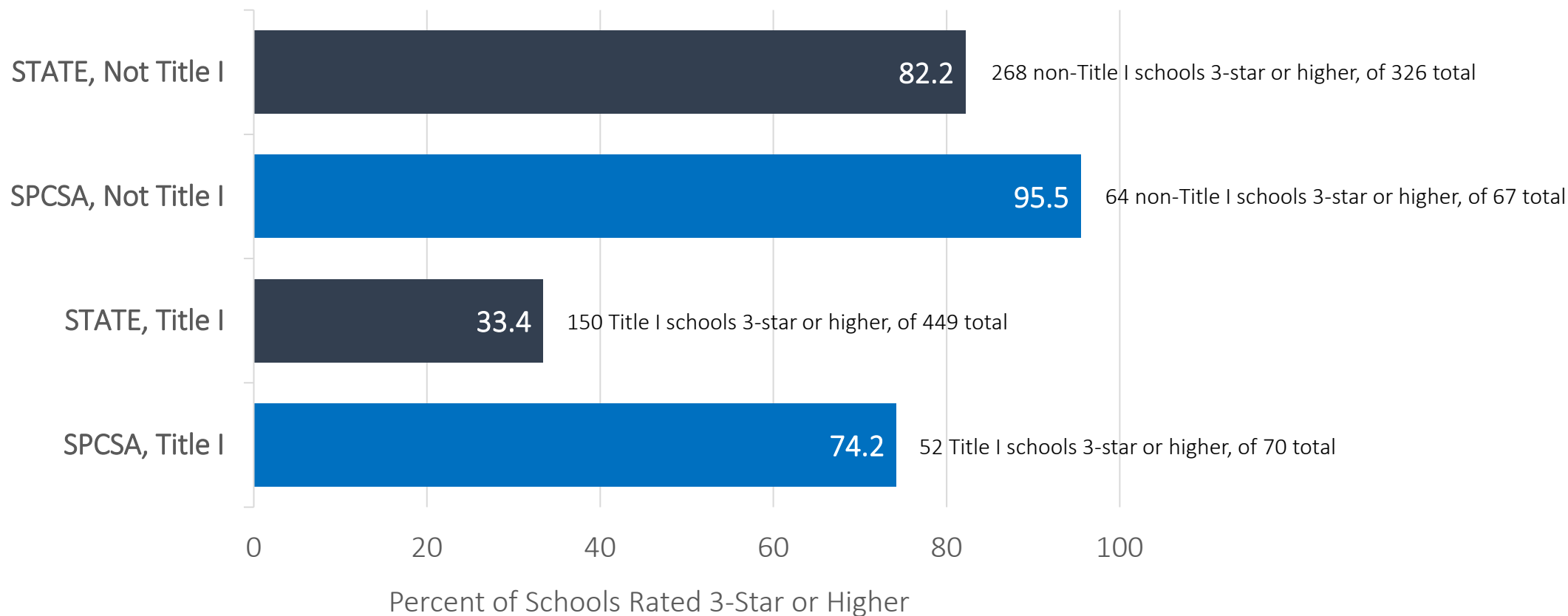
ELA Proficiency



Math Proficiency



SPCSA-Sponsored Schools Outperform the State, but Title I schools are Less Likely to Earn 3 Stars or Better

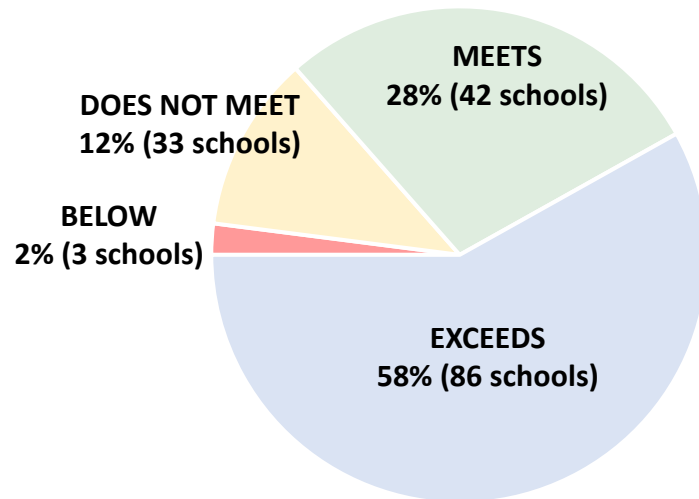




Academic Performance Framework

- The SPCSA adopted an updated Academic Performance Framework in 2024 that is based on:
 - School Index Score (NSPF);
 - Performance comparisons (NSPF index score) to schools in the SPCSA school's zip code;
 - Chronic absenteeism reduction; and
 - Student group performance comparisons (growth for elem. and middle schools, graduation rates for high schools).

2024-25 SPCSA Academic Performance Framework Ratings



The data shown above exclude schools that did not receive a rating. The requirements to receive an SPCSA Academic Performance Framework score and rating are found [here](#).

Site Evaluations

- The SPCSA conducts site evaluations at each school campus, at minimum, in the first, third and fifth years of the charter contract.
- Each site evaluation involves document submissions, classroom observations, and focus groups.
- For the 2025-26 school year, the SPCSA has 54 site evaluations scheduled, with 30 complete as of January 1, 2026.

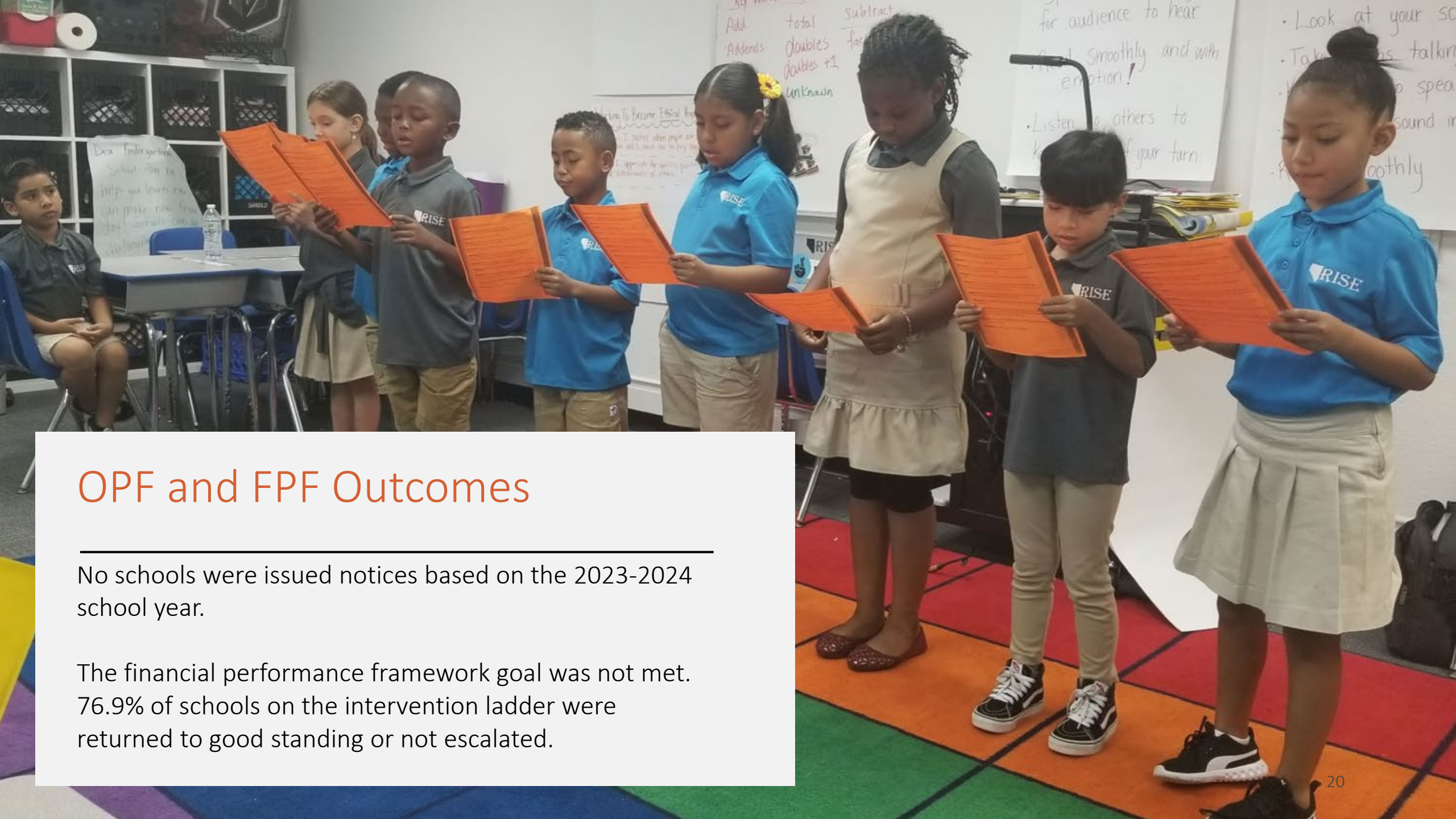


Organizational Performance Framework

- The SPCSA approved an updated Organizational Performance Framework (OPF) in 2024, which evaluates:
 - Compliance
 - Charter Contract
 - Governance
 - Statutes, Administrative Codes, Regulations
 - Operations
 - Quality Program Indicators
 - Education Program
 - Governance and Reporting
- The Organizational Framework is focused on answering the question: *Is the organization effective and well run?*
- For the 2024-2025 school year, 3 charter holders were found to be out of compliance and issued a Notice of Concern under the Organizational Performance Framework.

Financial Performance Framework

- The SPCSA approved an updated Financial Performance Framework (FPF) in 2024 with four near-term measures and four sustainability measures.
- The Financial Framework is focused on answering the question: *Is the school financially viable?*
- For the 2023-2024 school year, 72.1% of charter holders met standards on the Financial Performance Framework. Ratings for the 2024-25 school year will be presented at a future board meeting.



OPF and FPF Outcomes

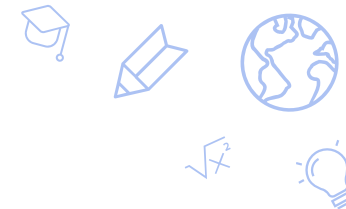
No schools were issued notices based on the 2023-2024 school year.

The financial performance framework goal was not met. 76.9% of schools on the intervention ladder were returned to good standing or not escalated.

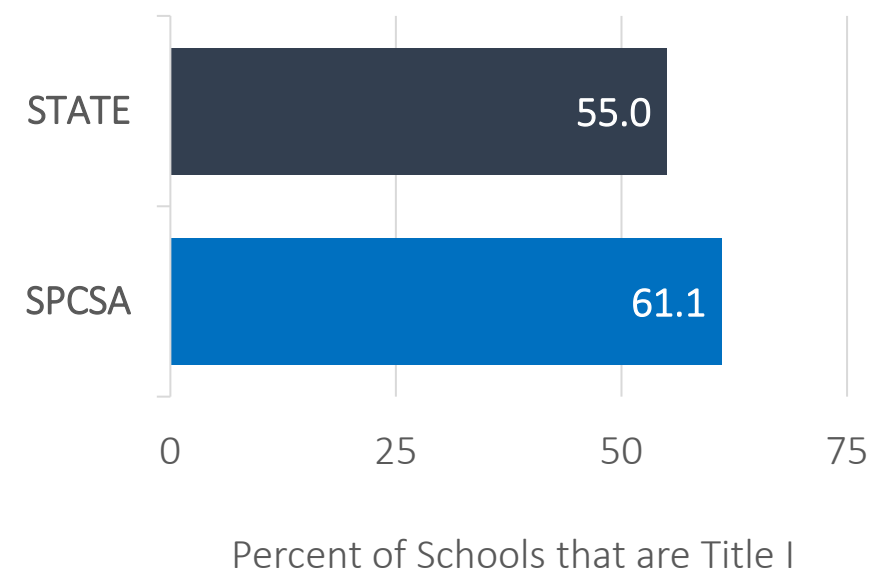
Provide equitable access to charter schools

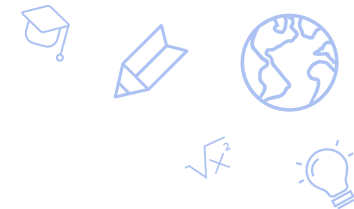
The SPCSA aims for sponsored schools to serve a student population that is representative of the state in terms of race/ethnicity and other student groups.





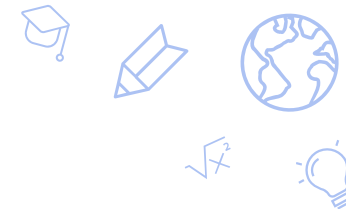
The percentage of Title I schools in the SPCSA portfolio is at or above the percentage of statewide Title I schools.





New charter schools opening under this strategic plan will have an ELL enrollment rate at or above their district average.

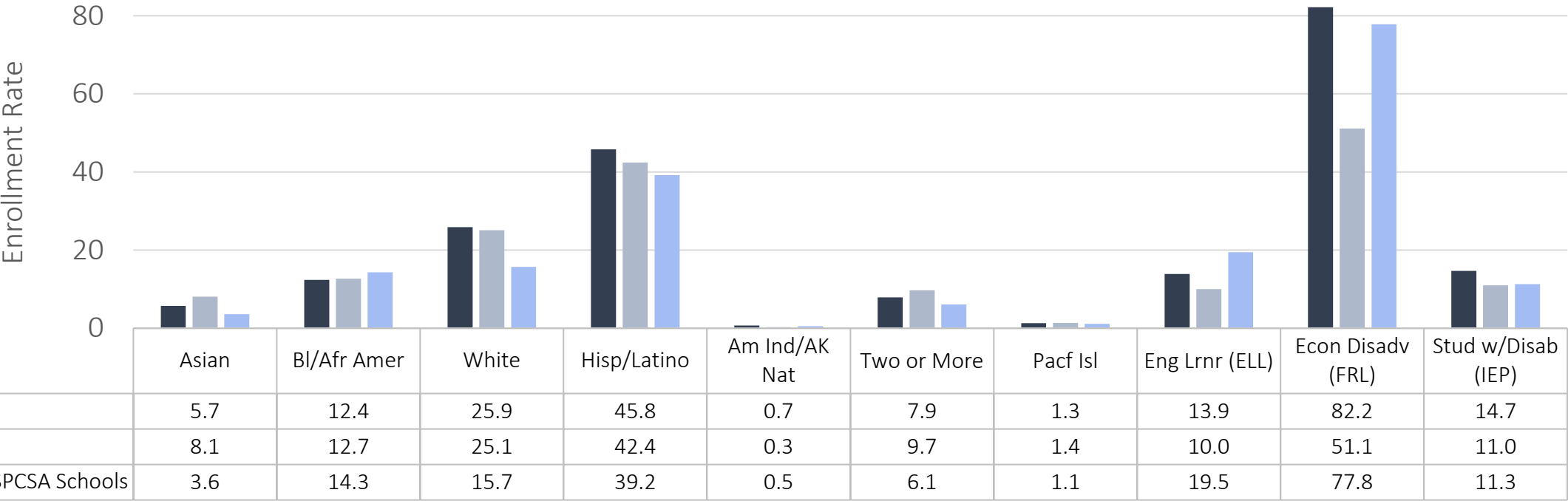
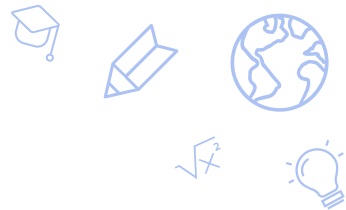
School	School ELL Enrollment Rate	Comparison District and ELL Enrollment Rate
Do & Be Arts Academy	1.7%	Clark County – 15.7%
Nevada Classical Academy Elko	0%	Elko County – 8.3%
WYLEES	15.7%	Clark County – 15.7%



New charter schools opening under this strategic plan will have an average enrollment rate of students with IEPs at or above the state average.

Entity	IEP Enrollment Rate
State	14.7%
Do & Be Arts Academy	10.8%
Nevada Classical Academy Elko	9.6%
WYLEES	10.8%

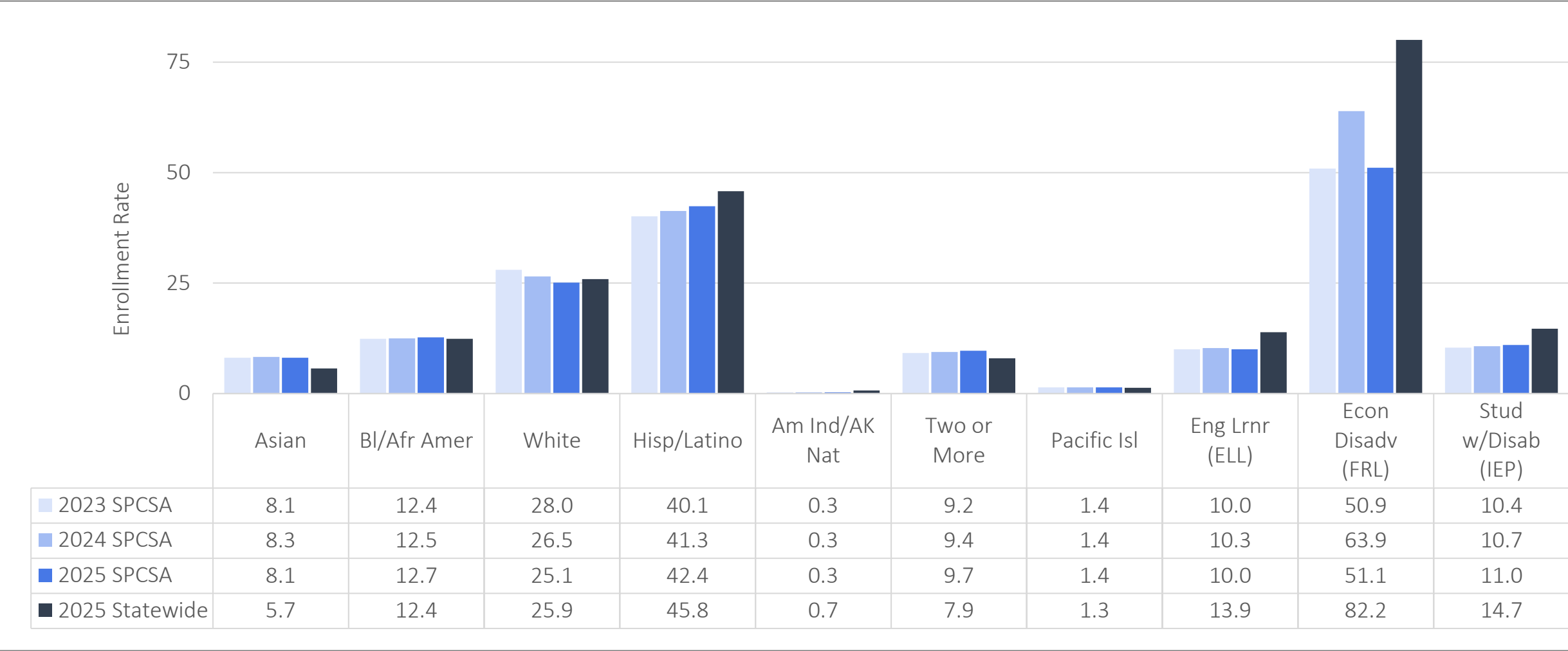
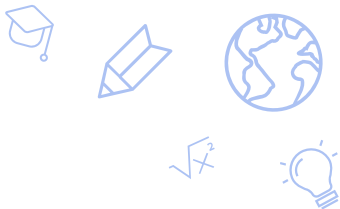
New SPCSA Schools that Opened in Recent Years are More Reflective of State Enrollment Rates

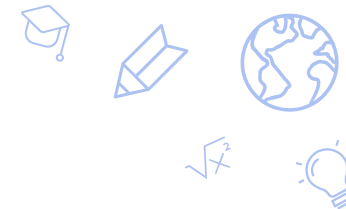


Schools included in “Recently Opened SPCSA Schools” are those approved post implementation of the SPCSA Needs Assessment:

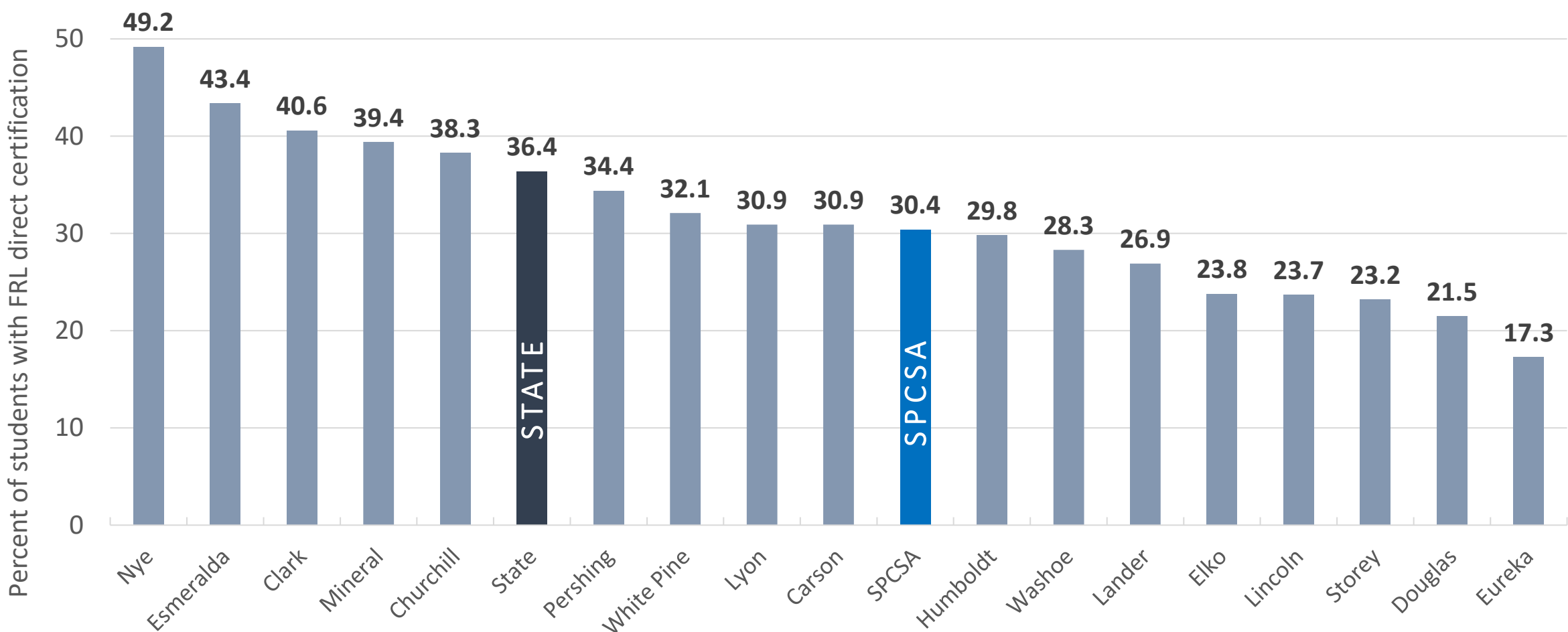
- Opened 2020-21 SY: Explore Acad., Mater Acad. East, Nevada State HS Downtown Henderson, and Pinecrest Acad. Northern Nevada.
- Opened 2021-22 SY: Beacon Acad. (Sahara campus – but note data are included for the entire Beacon charter as data cannot be easily split out) and CIVICA.
- Opened 2022-23 SY: Coral Acad. of Science Las Vegas Cadence, Nevada State HS North Las Vegas, Pinecrest Acad. Virtual, Sage Collegiate, Strong Start Acad., and Young Women’s Leadership Acad.
- Opened 2023-24 SY: Pinecrest Acad. Springs and Southern NV Trades HS.
- Opened 2024-25 SY: Thrive Point Acad. and Vegas Vista Acad.
- Opened 2025-26 SY: Do & Be Arts Acad., Mater Acad. Cactus Park, NV Classical Acad. Elko, WYLEES

The SPCSA's Demographics Show Steady Progress Towards Alignment with the State





2024-25 SPCSA vs. Nevada Districts: FRL Direct Certification Rates



The SPCSA is committed to being a responsive organization

As an agency, the SPCSA aims to have strong communication skills, adaptability, and innovation in our outputs and problem-solving. We are committed to executing plans effectively while staying resilient to challenges.



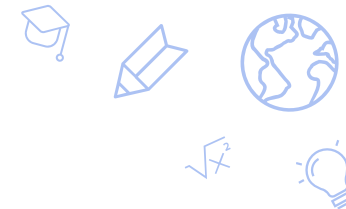


Progress Toward Goal

The SPCSA applied for and was awarded a \$22,988 Financial Operating and Efficiency Grant through the Nevada Department of Education. The grant will be used to fulfill two benchmarks under goal 3:

- Develop a survey to be taken annually by stakeholders
- Develop a communication strategy to supplement the strategic plan

The SPCSA issued its first Request for Proposals for high performing charter school operators and approved one operator.

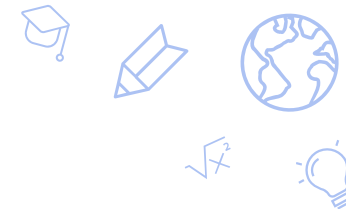


Challenges	Solutions
School closures	Implemented RFQ for proven providers who will become eligible for restart work.
Financial reporting accuracy and timeliness	Conducted multiple trainings for schools both in and out of our portfolio on state-mandated financial documents. Improving forms to make them more user-friendly for charter schools.
Special education complaint increase	Relationship building with charter school and insurance defense counsel. Collaborating with school districts facing similar challenges. Offering monthly trainings to schools.
Schools concerned about too many interruptions by on site visits	Combined site visits with Risk Based Monitoring visits.
School concerned with burdensome compliance requirements	Implemented a grace period for submissions that require corrections. Eliminated duplicative reporting requirements.
Kindergarten readiness (lack of pre-k options)	Doubled the number of Nevada Ready Pre-K seats (458 seats total) and received a competitive grant for facilities costs of \$1.3million.

Appendix



New Charter Schools



New Schools and Campuses Opened Since 2020-2021 School Year

School Name	Opening Year	Location	Full Scale Grade Levels	Full Scale Enrollment	Title I
Amplus Academy – Rainbow	2020-21	Las Vegas	K-5	640	Yes
Explore Academy	2020-21	North Las Vegas	6-12	570	Yes
Girls Empowerment Middle School (GEMS)*	2020-21	Las Vegas	6-8	215	N/A
Mater Academy of Nevada – East	2020-21	Las Vegas	PK-12	2,209	Yes
Nevada State High School – Downtown Henderson	2020-21	Henderson	11-12	190	No
Nevada State High School – Northwest	2020-21	Las Vegas	11-12	166	No
Pinecrest Academy of Northern Nevada	2020-21	Sparks	K-8	988	No
Beacon Academy of Nevada- East	2021-22	Las Vegas	9-12	350	Yes
CIVICA Nevada	2021-22	North Las Vegas	K-12	1650	Yes
TEACH Las Vegas**	2021-22	Las Vegas	K-12	975	Yes

*School closed at the end of the 2022-23 school year.

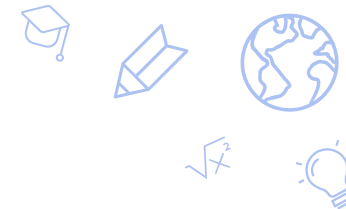
**School closed at the end of the 2023-24 school year.



New Schools and Campuses Opened Since 2020-2021 School Year (continued)

School Name	Opening Year	Location	Full Scale Grade Levels	Full Scale Enrollment	Title I
Battle Born Academy*	2022-23	Las Vegas	K-8	540	Yes
Coral Academy of Science – Cadence	2022-23	Henderson	K-12	1,850	Yes
Nevada State High School – North Las Vegas	2022-23	North Las Vegas	11-12	170	Yes
Pinecrest Academy – Virtual	2022-23	Henderson (Virtual)	6-12	170	No
pilotED Cactus Park*	2022-23	Las Vegas	K-5	486	Yes
Sage Collegiate	2022-23	Las Vegas	K-8	588	Yes
Strong Start Academy	2022-23	Las Vegas	K-5	360	Yes
Young Women’s Leadership Academy	2022-23	Las Vegas	6-12	600	Yes
Eagle Charter School**	2023-24	Las Vegas	K-8	918	Yes
Pinecrest Academy – Springs	2023-24	Las Vegas	K-12	1200	Yes
Southern Nevada Trades High School	2023-24	Las Vegas	9-12	550	Yes
Thrive Point Academy	2024-25	Las Vegas	9-12	450	Yes
Vegas Vista	2024-25	Las Vegas	K-8	600	Yes

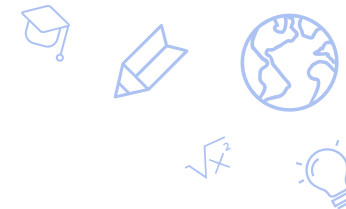
* School closed at the end of the 2024-25 school year.
 ** School closed at the end of the 2023-24 school year.



New Schools and Campuses Opened Since 2020-2021 School Year (continued)

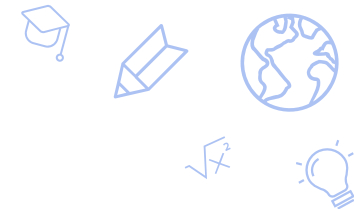
School Name	Opening Year	Location	Full Scale Grade Levels	Full Scale Enrollment	Title I
Do and Be Arts Academy of Excellence	2025-26	Las Vegas	K-8	630	Yes
Mater Academy – Cactus Park	2025-26	Las Vegas	K-12	1478	Yes
Nevada Classical Academy Elko	2025-26	Elko	K-8	357	No
Western Youth Leadership, Engagement & Empowerment School (WYLEES)	2025-26	Las Vegas	6-8	501	No

* School closed at the end of the 2023-24 school year.



New Schools and Campuses Scheduled to Open in Future Years

School Name	Opening Year	Location	Full Scale Grade Levels	Full Scale Enrollment
Northern Nevada Wildflower Montessori	2026-27	Washoe County	K-6	171
Pahrump Valley Academy	2026-27	Nye County	K-8	450
Somerset Academy of Carson City	2026-27	Carson City	K-8	430
Citizens of the World Charter School	2027-28	Clark County	K-7	510
Mater Academy of Northern Nevada – Golden Valley	2027-28	Washoe County	K-12	1460



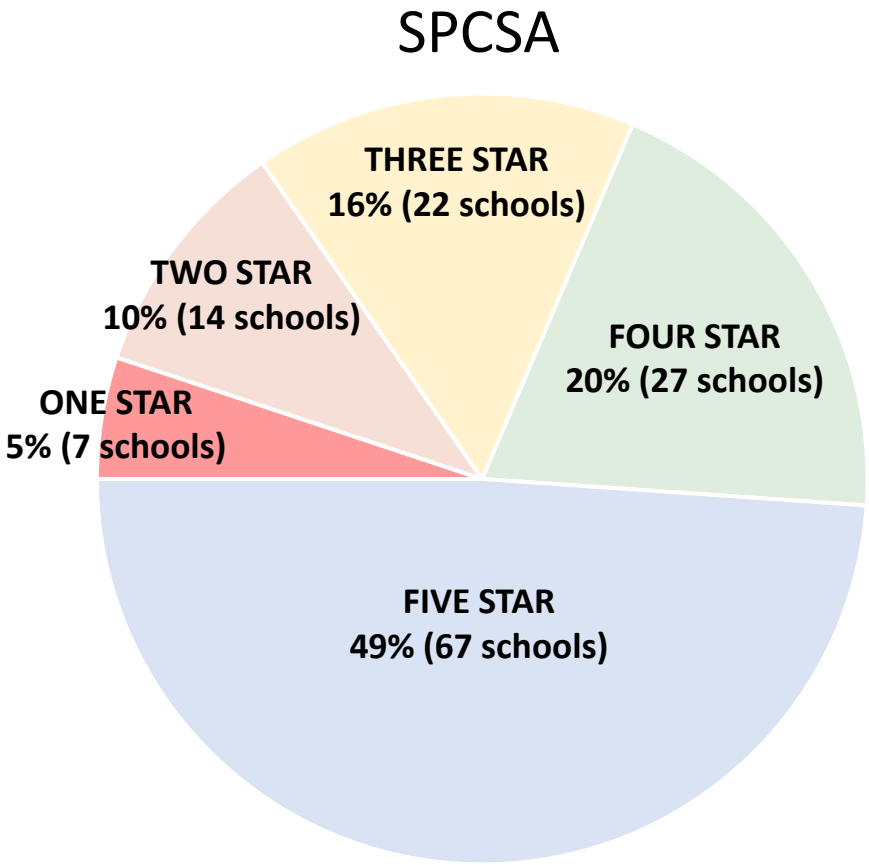
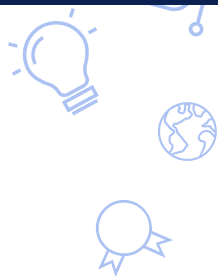
Clark County School District Schools Transferred to Portfolio in the 2025-2026 School Year

School Name	Opening Year	Location	Full Scale Grade Levels	Full Scale Enrollment
Delta Academy	2025-26	Las Vegas	6-12	1460
Explore Knowledge Academy	2025-26	Las Vegas	K-12	640
Future Edge	2025-26	Las Vegas	K-8	325
Innovations Charter School	2025-26	Las Vegas	K-12	665
Odyssey Charter School	2025-26	Las Vegas	K-12	2380
Rainbow Dreams Early Learning Academy	2025-26	Las Vegas	K	80*

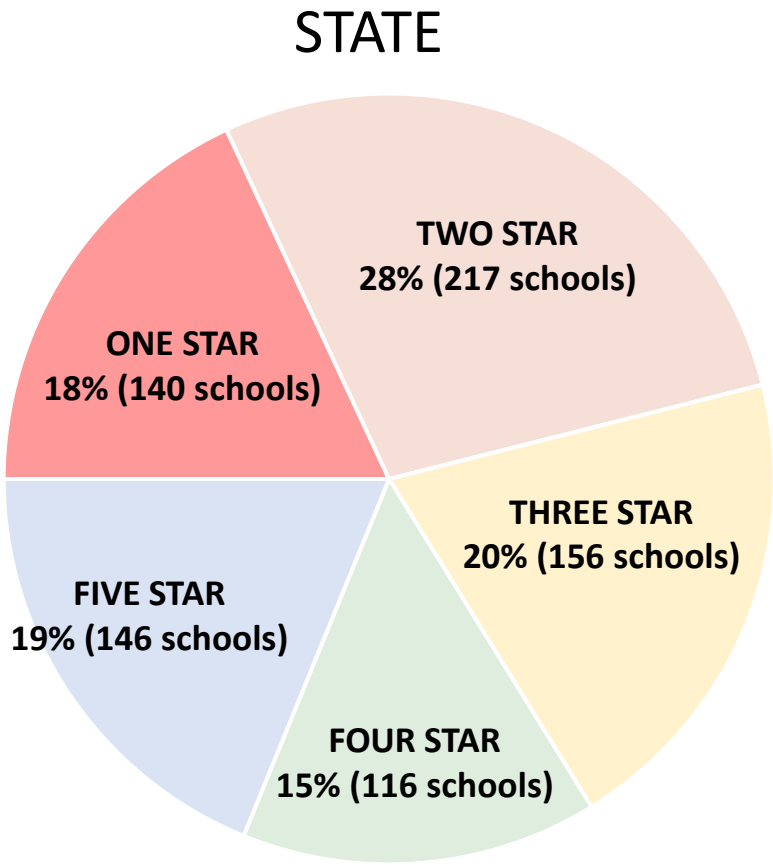
*School also serves 3-year-old and 4-year-old pre-k programs

Star Ratings

SPCSA vs. State: Nevada School Performance Framework (NSPF) Star Rating Overview

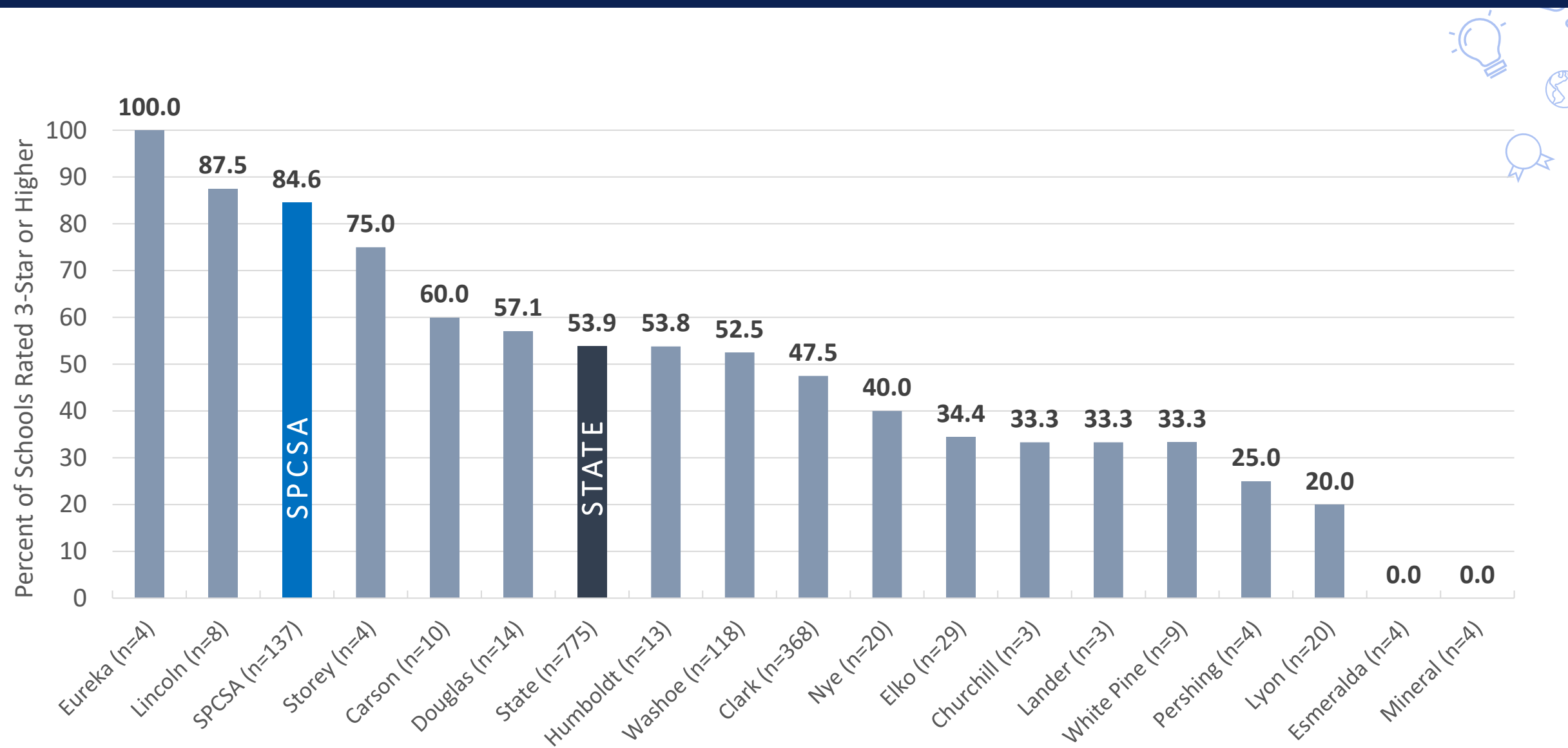


For comparison, in the 2023-24 SY, 15% (21) were 1 star, 12% (16) were 2 star, 21% (29) were 3 star, 18% (25) were 4 star, and 34% (46) were 5 star.



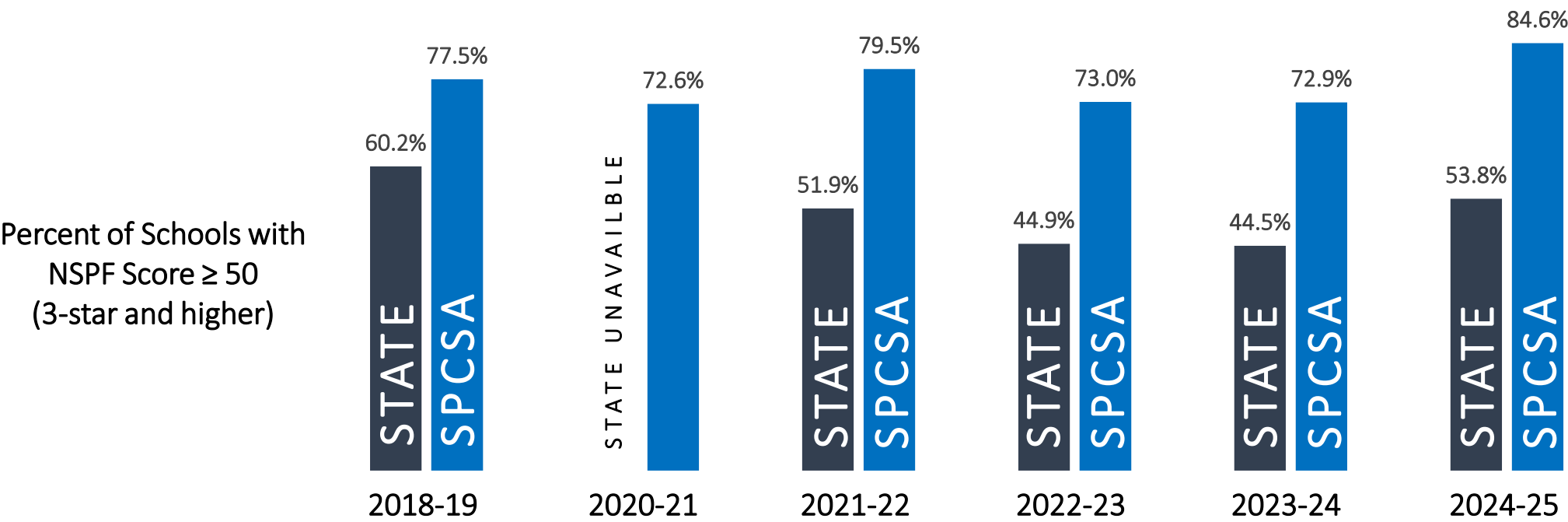
For comparison, in the 2023-24 SY, 30% (232) were 1 star, 26% (198) were 2 star, 20% (157) were 3 star, 12% (92) were 4 star, and 12% (96) were 5 star.

SPCSA vs. Nevada Districts: Percent of Schools with 3-Star or Higher NSPF Rating



Data retrieved from the [Nevada Accountability Portal](#). Only schools that met requirements to receive an NSPF rating (rules found [here](#) on pages 6-7) are included. SPCSA schools are included in the state data. SPCSA data do not include schools that transferred from CCSD to SPCSA sponsorship on July 1, 2025. One “school” may contain multiple levels (elementary, middle, high). N-sizes in district labels indicate number of rated schools in each district.

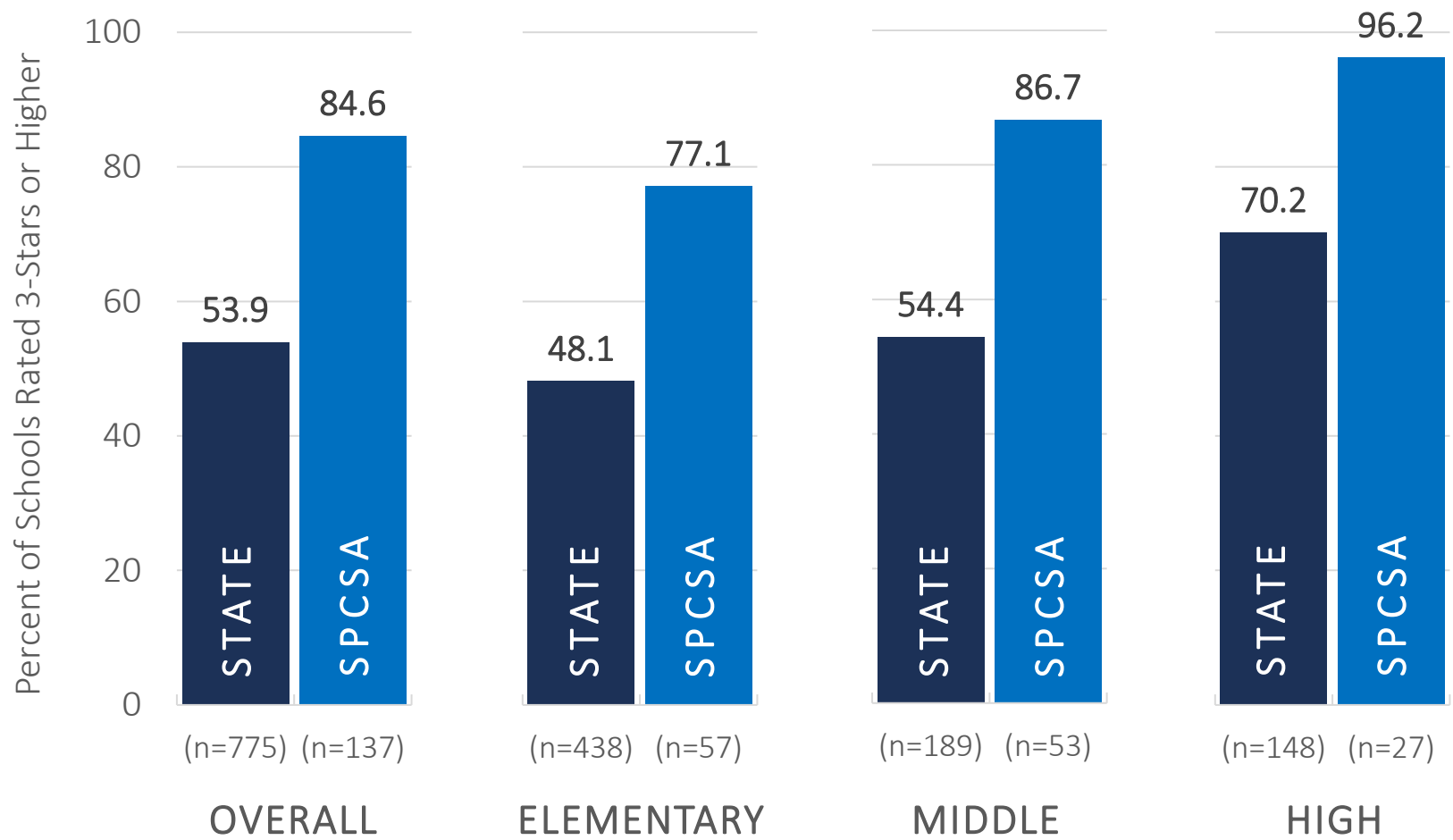
SPCSA vs. State: NSPF Score Trends



NSPF Timeline, by School Year

- 2018-19: Official NDE NSPF index scores / star ratings.
- 2019-20: US Dept. of Education waiver – NSPF data unavailable due to COVID.
- 2020-21: US Dept. of Education waiver – NSPF data available but index scores / star ratings not calculated. SPCSA performed unofficial calculations.
- 2021-22: NDE calculated NSPF index scores, but not corresponding star ratings.
- 2022-23 through 2024-25: Official NDE NSPF star ratings.

SPCSA vs. State: Percent of Schools with 3-Star or Higher NSPF Rating



NSPF Star Ratings by School

School Name	NSPF Star Rating	NSPF Index Score
Alpine Acad HS	3	57.2
Amplus Durango ES	5	96.0
Amplus Durango HS	5	92.0
Amplus Durango MS	5	88.0
Amplus Rainbow ES	5	98.0
Battle Born ES	2	36.0
Battle Born MS	2	33.5
Beacon Acad HS	1	3.8
CASLV Cadence ES	3	63.0
CASLV Cadence HS	Not Rated	84.0
CASLV Cadence MS	5	80.5
CASLV Centennial ES	5	86.0
CASLV Centennial MS	5	91.1
CASLV Eastgate ES	5	85.0
CASLV Nellis AFB ES	2	43.8
CASLV Nellis AFB MS	4	78.8
CASLV Sandy Ridge HS	5	98.5
CASLV Sandy Ridge MS	5	81.1
CASLV Tamarus ES	5	90.0
CASLV Windmill ES	3	55.2
CASLV Windmill MS	5	100.0
CIVICA ES	4	80.5
CIVICA HS	Not Rated	78.0
CIVICA MS	5	83.0
Democracy Prep ES	1	18.5
Democracy Prep HS	3	53.5
Democracy Prep MS	2	44.5
Discovery Hillpointe ES	3	58.5
Discovery Hillpointe MS	2	49.5
Discovery Sandhill ES	4	79.0
Doral Cactus ES	5	97.0

School Name	NSPF Star Rating	NSPF Index Score
Doral Cactus MS	5	98.3
Doral Fire Mesa ES	5	84.5
Doral Fire Mesa MS	5	99.0
Doral North NV ES	5	91.1
Doral North NV MS	5	82.7
Doral Pebble ES	5	88.0
Doral Pebble MS	5	88.0
Doral Red Rock ES	5	92.5
Doral Red Rock HS	5	89.0
Doral Red Rock MS	5	86.5
Doral Saddle ES	5	91.0
Doral Saddle MS	5	94.5
Elko Inst for Acad Achvmt ES	4	74.4
Elko Inst for Acad Achvmt MS	5	91.1
Equipo Acad HS	4	76.0
Equipo Acad MS	3	53.0
Explore Acad HS	Not Rated	31.5
Explore Acad MS	1	22.0
Founders Classical Acad ES	2	43.0
Founders Classical Acad HS	4	80.0
Founders Classical Acad MS	3	62.5
Freedom Classical Acad ES	2	48.5
Freedom Classical Acad MS	3	65.5
Futuro Acad ES	4	73.5
Honors Acad ES	2	42.2
Honors Acad MS	4	73.8
Imagine Mtn View ES	3	56.5
Imagine Mtn View MS	3	67.8
Leadership Acad HS	4	75.5
Leadership Acad MS	3	61.1
Learning Bridge ES	1	19.4

School Name	NSPF Star Rating	NSPF Index Score
Learning Bridge MS	4	70.5
Legacy Cadence ES	2	39.0
Legacy Cadence MS	3	59.0
Legacy N. Valley ES	4	72.0
Legacy N. Valley MS	4	73.0
Legacy Southwest ES	5	93.0
Legacy Southwest MS	5	100.0
Mater Bonanza ES	5	85.0
Mater Bonanza MS	5	80.0
Mater ELV ES	5	85.0
Mater ELV HS	4	75.7
Mater ELV MS	4	70.5
Mater Mtn Vista ES	4	82.5
Mater Mtn Vista MS	5	88.5
Mater North NV ES	4	76.5
Mater North NV MS	3	67.5
Nevada Connections Acad HS	3	53.5
Nevada Prep ES	1	12.5
Nevada Prep MS	1	26.5
Nevada Rise ES	2	48.0
Nevada Virtual HS	4	72.5
Nevada Virtual MS	2	34.0
NSHS Downtown HS	4	79.3
NSHS Dtnw Henderson HS	5	100.0
NSHS Henderson HS	5	93.1
NSHS Meadowwood HS	5	97.5
NSHS North Las Vegas HS	4	80.0
NSHS Northwest HS	5	95.0
NSHS Southwest HS	5	95.0
NSHS Summerlin HS	5	95.0
NSHS Sunrise HS	5	92.5

NSPF Star Ratings by School

School Name	NSPF Star Rating	NSPF Index Score
Oasis Acad ES	4	72.0
Oasis Acad HS	5	91.6
Oasis Acad MS	5	90.5
pilotED Cactus Park ES	2	32.0
Pinecrest Cadence ES	4	81.0
Pinecrest Cadence HS	5	93.0
Pinecrest Cadence MS	5	80.0
Pinecrest Horizon ES	5	87.0
Pinecrest Inspirada ES	4	80.0
Pinecrest Inspirada MS	5	95.5
Pinecrest North NV ES	5	95.0
Pinecrest North NV MS	5	83.8
Pinecrest Sloan Canyon ES	5	90.0
Pinecrest Sloan Canyon HS	5	93.5
Pinecrest Sloan Canyon MS	5	84.4
Pinecrest Springs ES	5	95.0
Pinecrest St Rose ES	5	91.0
Pinecrest St Rose MS	5	97.7
Pinecrest Virtual HS	Not Rated	40.9
Pinecrest Virtual MS	3	55.0
Quest Northwest ES	4	77.5
Quest Northwest MS	4	77.2
Sage Collegiate ES	1	15.0
Sage Collegiate MS	2	46.3
Signature Prep ES	3	56.5
Signature Prep MS	3	67.0
Silver Sands ES	3	55.0
Silver Sands MS	3	53.5
SLAM Acad ES	2	40.0
SLAM Acad HS	5	85.0
SLAM Acad MS	5	89.0

School Name	NSPF Star Rating	NSPF Index Score
Somerset Aliante ES	4	82.0
Somerset Aliante MS	5	100.0
Somerset Lone Mtn ES	5	85.0
Somerset Lone Mtn MS	5	97.0
Somerset Losee ES	5	85.5
Somerset Losee HS	3	61.0
Somerset Losee MS	3	62.0
Somerset NLV ES	4	73.5
Somerset Sky Pointe ES	5	86.6
Somerset Sky Pointe HS	5	92.0
Somerset Sky Pointe MS	5	92.2
Somerset Skye Canyon ES	5	94.0
Somerset Skye Canyon MS	5	93.8
Somerset Stephanie ES	5	100.0
Somerset Stephanie MS	5	91.0
Southern NV Trades HS	Not Rated	17.7
Strong Start ES	4	83.5
Thrive Point HS	Not Rated	6.9
Vegas Vista ES	Not Rated	11.1
YWLA HS	Not Rated	75.0
YWLA MS	3	53.5

School Name	NSPF Star Rating	NSPF Index Score
Explore Knowledge Acad ES	3	61.0
Explore Knowledge Acad HS	4	72.2
Explore Knowledge Acad MS	5	89.5
FuturEdge Acad ES	1	17.0
FuturEdge Acad MS	2	37.2
Innovations Charter ES	2	47.5
Innovations Charter HS	2	49.5
Innovations Charter MS	3	54.0
Odyssey Charter School ES	4	76.1
Odyssey Charter School HS	3	54.5
Odyssey Charter School MS	5	84.5
Rainbow Dreams Acad ES	Not Rated	35.0
The Delta Acad HS	1	24.5
The Delta Acad MS	2	37.0

Above are 2024-25 NSPF ratings for the six Clark County School District (CCSD) charter schools that transferred to SPCSA sponsorship effective July 1, 2025. These schools earned their ratings under CCSD.

Proficiency on State Assessments

3rd-8th Grade Smarter Balanced Assessment: SPCSA vs. State Proficiency Trends

State vs SPCSA proficiency trends 2022-23 to 2024-25

 Indicates SPCSA rate ≥ State rate

 Indicates SPCSA rate < State rate

EL = English Learner

FRL = Eligible for Free- or Reduced-Price Lunch

IEP = Students with Disabilities

Year	Group	STATE ELA % Proficient	SPCSA ELA % Proficient	STATE Math % Proficient	SPCSA Math % Proficient
2022-2023	Overall	41.0	53.3	31.2	44.3
2023-2024	Overall	41.2	54.1	32.5	45.0
2024-2025	Overall	45.6	59.9	35.4	49.1
2022-2023	Am In/AK Native	23.9	44.4	16.3	34.1
2023-2024	Am In/AK Native	24.2	50.4	16.8	30.5
2024-2025	Am In/AK Native	26.2	51.2	19.6	38.6
2022-2023	Asian	66.0	73.8	59.3	68.1
2023-2024	Asian	66.7	75.8	61.4	69.8
2024-2025	Asian	70.5	80.4	64.2	73.9
2022-2023	Black	25.6	36.6	14.8	24.2
2023-2024	Black	26.8	38.1	16.9	26.0
2024-2025	Black	31.7	45.1	19.3	29.8
2022-2023	Hispanic	32.8	44.6	22.3	34.2
2023-2024	Hispanic	32.9	45.1	23.5	34.6
2024-2025	Hispanic	37.8	52.2	26.7	39.7
2022-2023	Pacific Islander	36.3	47.7	28.0	41.9
2023-2024	Pacific Islander	36.5	46.9	28.6	39.6
2024-2025	Pacific Islander	43.4	57.7	31.1	43.0
2022-2023	Two or More Races	50.1	59.8	39.1	50.7
2023-2024	Two or More Races	50.5	61.0	40.7	52.4
2024-2025	Two or More Races	55.1	64.8	44.3	55.2
2022-2023	White	53.7	63.8	45.1	57.0
2023-2024	White	54.0	64.8	46.5	58.1
2024-2025	White	57.8	69.5	49.4	61.5
2022-2023	EL	11.9	18.8	10.9	18.7
2023-2024	EL	11.4	19.3	11.2	18.3
2024-2025	EL	14.2	25.3	12.8	21.2
2022-2023	FRL	30.0	40.8	20.7	31.1
2023-2024	FRL	38.1	43.0	29.3	33.4
2024-2025	FRL	42.9	53.4	32.7	42.2
2022-2023	IEP	13.8	22.5	11.5	20.4
2023-2024	IEP	14.1	21.7	12.0	19.1
2024-2025	IEP	15.3	26.1	12.9	21.5

Data retrieved from the [Nevada Accountability Portal](#), which uses different rules from the NSPF. Data include the three most recent available years. Students take SBAC in grades 3-8.

5th and 8th Grade Science Assessment: SPCSA vs. State Proficiency Trends

State vs SPCSA proficiency trends

2022-23 to 2024-25

 Indicates SPCSA rate \geq State rate

 Indicates SPCSA rate $<$ State rate

EL = English Learner

FRL = Eligible for Free- or Reduced-Price Lunch

IEP = Students with Disabilities

Year	Group	STATE Science % Proficient	SPCSA Science % Proficient
2022-2023	Overall	25.9	36.3
2023-2024	Overall	25.1	35.2
2024-2025	Overall	27.2	38.8
2022-2023	Am In/AK Native	16.7	32.5
2023-2024	Am In/AK Native	13.2	28.1
2024-2025	Am In/AK Native	12.5	27.0
2022-2023	Asian	47.7	56.8
2023-2024	Asian	45.3	52.9
2024-2025	Asian	49.1	60.1
2022-2023	Black	11.5	19.7
2023-2024	Black	12.3	19.7
2024-2025	Black	14.6	23.2
2022-2023	Hispanic	18.2	26.9
2023-2024	Hispanic	17.9	26.2
2024-2025	Hispanic	19.7	29.5
2022-2023	Pacific Islander	19.6	25.7
2023-2024	Pacific Islander	18.4	34.1
2024-2025	Pacific Islander	22.0	33.3
2022-2023	Two or More Races	31.6	41.4
2023-2024	Two or More Races	32.3	42.3
2024-2025	Two or More Races	33.7	41.7
2022-2023	White	39.1	48.4
2023-2024	White	36.8	46.1
2024-2025	White	39.5	51.7
2022-2023	EL	<5.0	5.7
2023-2024	EL	<5.0	6.1
2024-2025	EL	<5.0	5.3
2022-2023	FRL	16.5	23.9
2023-2024	FRL	16.3	24.2
2024-2025	FRL	24.4	31.0
2022-2023	IEP	6.9	12.8
2023-2024	IEP	6.8	12.3
2024-2025	IEP	7.4	15.0

Data retrieved from the [Nevada Accountability Portal](#), which uses different rules from the NSPF. Data include the three most recent available years. Students take Science 5/8 in grades 5 and 8.

11th Grade ACT Assessment: SPCSA vs. State Proficiency Trends

State vs SPCSA proficiency trends 2022-23 to 2024-25

 Indicates SPCSA rate \geq State rate

 Indicates SPCSA rate $<$ State rate

EL = English Learner

FRL = Eligible for Free- or Reduced-Price Lunch

IEP = Students with Disabilities

Year	Group	STATE ELA % Proficient	SPCSA ELA % Proficient	STATE Math % Proficient	SPCSA Math % Proficient
2022-2023	Overall	45.9	53.2	19.7	24.8
2023-2024	Overall	45.5	53.4	19.4	22.5
2024-2025	Overall	47.6	55.0	21.0	23.4
2022-2023	Am In/AK Native	31.8	n<10	8.7	n<10
2023-2024	Am In/AK Native	29.0	n<10	6.3	n<10
2024-2025	Am In/AK Native	31.7	n<10	7.7	n<10
2022-2023	Asian	68.7	75.1	41.8	49.5
2023-2024	Asian	71.4	76.9	43.4	45.7
2024-2025	Asian	73.4	85.4	46.0	53.6
2022-2023	Black	27.7	33.5	7.3	10.6
2023-2024	Black	29.9	35.3	7.5	8.6
2024-2025	Black	31.1	36.5	8.3	7.4
2022-2023	Hispanic	34.7	42.9	11.2	15.2
2023-2024	Hispanic	35.0	45.9	10.7	14.2
2024-2025	Hispanic	37.7	44.8	12.3	14.1
2022-2023	Pacific Islander	43.8	55.0	17.7	26.6
2023-2024	Pacific Islander	43.8	44.2	15.6	n<10
2024-2025	Pacific Islander	45.8	52.5	17.1	25.4
2022-2023	Two or More Races	57.5	64.0	24.9	33.7
2023-2024	Two or More Races	56.4	58.9	26.1	31.7
2024-2025	Two or More Races	58.9	61.1	27.6	26.6
2022-2023	White	61.3	64.7	31.0	33.2
2023-2024	White	60.0	65.7	31.4	33.5
2024-2025	White	61.9	70.0	33.7	36.8
2022-2023	EL	<5.0	6.2	<5.0	n<10
2023-2024	EL	7.0	26.0	<5.0	5.5
2024-2025	EL	7.0	12.8	<5.0	<5.0
2022-2023	FRL	31.7	40.7	10.0	13.4
2023-2024	FRL	42.8	40.2	17.3	12.3
2024-2025	FRL	45.4	45.5	19.1	17.2
2022-2023	IEP	9.9	19.5	<5.0	<5.0
2023-2024	IEP	10.2	17.1	<5.0	5.9
2024-2025	IEP	11.3	22.7	<5.0	<5.0

Data retrieved from the [Nevada Accountability Portal](#), which uses different rules from the NSPF. Data include the three most recent available years. Students take the ACT in grade 11. n<10 indicates data are hidden to protect privacy due to a population size less than 10.

High School Science Assessment: SPCSA vs. State Proficiency Trends

State vs SPCSA proficiency trends

2022-23 to 2024-25

 Indicates SPCSA rate ≥ State rate

 Indicates SPCSA rate < State rate

EL = English Learner

FRL = Eligible for Free- or Reduced-Price Lunch

IEP = Students with Disabilities

Year	Group	STATE Science % Proficient	SPCSA Science % Proficient
2022-2023	Overall	20.0	23.2
2023-2024	Overall	20.1	22.7
2024-2025	Overall	23.1	26.0
2022-2023	Am In/AK Native	10.2	n<10
2023-2024	Am In/AK Native	13.9	n<10
2024-2025	Am In/AK Native	12.2	n<10
2022-2023	Asian	39.5	44.6
2023-2024	Asian	40.9	44.5
2024-2025	Asian	42.5	46.0
2022-2023	Black	8.4	10.7
2023-2024	Black	8.9	11.8
2024-2025	Black	11.4	12.5
2022-2023	Hispanic	12.6	15.0
2023-2024	Hispanic	13.4	15.5
2024-2025	Hispanic	16.2	18.6
2022-2023	Pacific Islander	13.6	n<10
2023-2024	Pacific Islander	16.2	22.8
2024-2025	Pacific Islander	16.5	21.4
2022-2023	Two or More Races	25.3	24.0
2023-2024	Two or More Races	25.4	26.6
2024-2025	Two or More Races	31.1	33.2
2022-2023	White	31.6	35.2
2023-2024	White	30.4	31.2
2024-2025	White	34.1	36.0
2022-2023	EL	<5.0	n<10
2023-2024	EL	<5.0	n<10
2024-2025	EL	<5.0	<5.0
2022-2023	FRL	12.2	14.3
2023-2024	FRL	12.8	16.4
2024-2025	FRL	21.5	20.2
2022-2023	IEP	<5.0	10.1
2023-2024	IEP	<5.0	7.7
2024-2025	IEP	5.9	9.0

Data retrieved from the [Nevada Accountability Portal](#), which uses different rules from the NSPF. Data include the three most recent available years. Students take HS Science in grades 9 or 10. n<10 indicates data are hidden to protect privacy due to a population size less than 10.

Graduation Rates

4-Year Graduation Rates: SPCSA Schools (Class of 2023-24)

Entity	Overall	Amer Ind/AK Native	Asian	Bl/Afr Amer	Hispanic /Latino	Pacific Islander	Two or More	White	Eng Lnr (ELL)	Econ Disadv (FRL)	Stud w/Disab (IEP)	CTE Concentrator	CTE Completer	Foster	Homeless	Military Connected
STATE	85.4	75.0	94.0	78.4	85.0	86.4	86.2	87.2	78.8	85.1	75.1	>95.0	>95.0	53.9	68.3	86.2
SPCSA	82.6	94.1	>95.0	71.9	78.3	83.3	83.3	91.7	69.8	79.6	72.5	>95.0	>95.0	10.0	49.0	17.3
SPCSA Excluding APF	95.2	94.1	>95.0	94.6	94.7	94.3	>95.0	>95.0	93.9	94.8	92.2	>95.0	>95.0	*	85.7	*
Alpine Acad	100.0	*	N/A	N/A	>95.0	N/A	*	>95.0	*	>95.0	*	N/A	N/A	*	*	*
Amplus Durango	99.2	N/A	>95.0	96.6	>95.0	*	*	>95.0	>95.0	98.7	*	>95.0	>95.0	N/A	*	N/A
Beacon Acad*	25.9	N/A	*	25.4	20.8	57.1	21.7	53.1	20.1	25.6	32.8	7.6	N/A	0.0	22.2	0
CASLV Sandy Ridge	99.4	N/A	>95.0	*	96.4	*	>95.0	>95.0	*	98.6	>95.0	>95.0	>95.0	N/A	*	N/A
Democracy Prep	85.5	N/A	N/A	86.0	82.3	*	*	N/A	*	85.5	*	N/A	N/A	N/A	*	N/A
Doral Red Rock	98.6	N/A	>95.0	>95.0	98.5	*	>95.0	97.8	>95.0	99.0	94.7	>95.0	>95.0	N/A	*	N/A
Equipo Acad	90.2	*	*	N/A	90.0	N/A	N/A	*	89.1	90.2	*	N/A	N/A	N/A	72.7	N/A
Explore Acad	*	N/A	*	N/A	*	N/A	*	*	*	*	*	N/A	N/A	N/A	N/A	N/A
Founders Acad	100.0	N/A	*	*	>95.0	N/A	*	>95.0	*	>95.0	N/A	*	*	N/A	*	N/A
Leadership Acad	89.2	*	N/A	*	*	N/A	*	93.7	N/A	*	*	*	N/A	N/A	N/A	N/A
Mater East	99.5	*	*	>95.0	99.3	*	*	>95.0	98.2	99.5	96.2	99.4	99.4	N/A	>95.0	N/A
Nevada Connections Acad	82.2	*	*	88.0	83.6	*	88.2	80.8	94.7	80.0	78.4	97.9	99.4	*	63.6	*
Nevada Virtual	88.0	*	>95.0	92.3	83.6	*	*	85.5	73.9	88.0	87.7	>95.0	>95.0	*	77.7	*
NSHS Downtown	100.0	N/A	*	*	>95.0	N/A	N/A	*	*	>95.0	N/A	N/A	N/A	N/A	*	N/A
NSHS Dwtm Henderson	100.0	N/A	*	N/A	>95.0	*	*	>95.0	N/A	>95.0	*	N/A	N/A	N/A	N/A	N/A
NSHS Henderson	98.9	N/A	*	*	96.0	N/A	*	>95.0	*	>95.0	*	N/A	N/A	N/A	*	N/A
NSHS Meadowwood	*	N/A	N/A	N/A	*	N/A	*	*	N/A	*	N/A	N/A	N/A	N/A	N/A	N/A
NSHS North Las Vegas	100.0	N/A	*	*	>95.0	N/A	*	*	*	>95.0	N/A	N/A	N/A	N/A	*	N/A
NSHS Northwest	100.0	*	*	*	>95.0	*	>95.0	>95.0	*	>95.0	*	N/A	N/A	N/A	*	N/A
NSHS Southwest	98.8	N/A	95.2	>95.0	>95.0	N/A	*	>95.0	N/A	98.4	N/A	N/A	N/A	N/A	*	N/A
NSHS Summerlin	94.8	N/A	*	*	>95.0	N/A	91.6	>95.0	*	93.7	*	N/A	N/A	N/A	*	N/A
NSHS Sunrise	100.0	N/A	N/A	*	>95.0	N/A	*	*	*	>95.0	*	N/A	N/A	N/A	*	N/A
Oasis Acad	100.0	N/A	*	N/A	*	N/A	*	>95.0	*	*	*	N/A	N/A	N/A	N/A	N/A

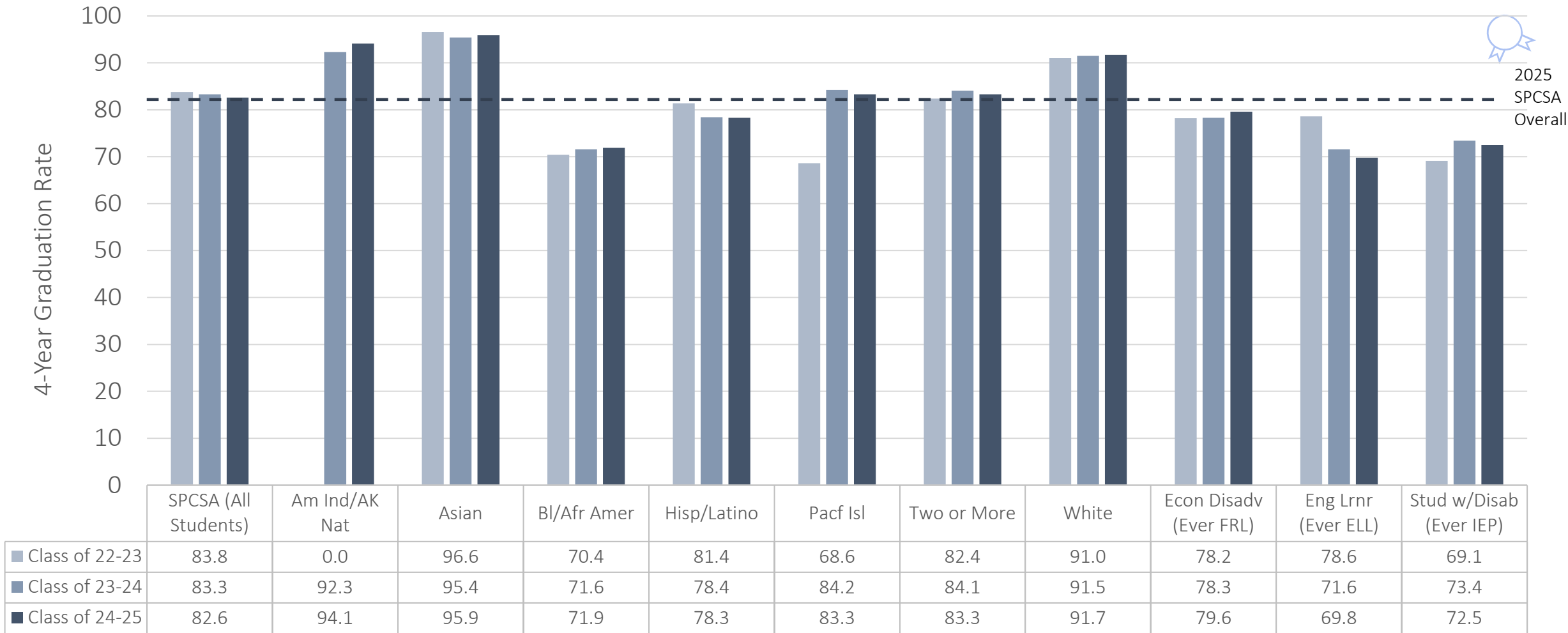
Data retrieved from the [Nevada Accountability Portal](#). To protect student privacy, rates associated with populations >0 and <10 students are displayed with an asterisk (*), and rates >0 and <5, or >95, are shown as <5.0 and >95.0, respectively. N/A indicates the population did not exist. "SPCSA Excluding APF Sch." shows SPCSA rates excluding schools (noted with * in the school name) rated on the Nevada Alternative Performance Framework (APF), which serve unique populations such as students that are credit deficient.

4-Year Graduation Rates: SPCSA Schools (Class of 2023-24)

Entity	Overall	Amer Ind/AK Native	Asian	Bl/Afr Amer	Hispanic /Latino	Pacific Islander	Two or More	White	Eng Lrn (ELL)	Econ Disadv (FRL)	Stud w/Disab (IEP)	CTE Concentrator	CTE Completer	Foster	Homeless	Military Connected
STATE	85.4	75.0	94.0	78.4	85.0	86.4	86.2	87.2	78.8	85.1	75.1	>95.0	>95.0	53.9	68.3	86.2
SPCSA	82.6	94.1	>95.0	71.9	78.3	83.3	83.3	91.7	69.8	79.6	72.5	>95.0	>95.0	10.0	49.0	17.3
SPCSA Excluding APF	95.2	94.1	>95.0	94.6	94.7	94.3	>95.0	>95.0	93.9	94.8	92.2	>95.0	>95.0	*	85.7	*
Pinecrest Cadence	99.3	N/A	*	>95.0	>95.0	*	>95.0	98.4	*	99.3	>95.0	>95.0	>95.0	N/A	*	N/A
Pinecrest Sloan	99.3	*	96.4	>95.0	>95.0	*	>95.0	>95.0	*	>95.0	>95.0	>95.0	>95.0	N/A	*	N/A
Pinecrest Virtual	93.3	N/A	N/A	N/A	*	*	*	*	N/A	*	*	*	*	N/A	*	N/A
SLAM	99.2	*	*	>95.0	98.7	*	*	>95.0	>95.0	99.2	*	>95.0	>95.0	N/A	*	N/A
Somerset Losee	98.4	*	>95.0	>95.0	97.8	*	95.2	>95.0	95.2	98.4	88.8	>95.0	*	N/A	91.6	N/A
Somerset Sky Pointe	100.0	N/A	*	>95.0	>95.0	*	>95.0	>95.0	*	>95.0	>95.0	>95.0	>95.0	N/A	*	N/A
Southern NV Trades HS	*	N/A	N/A	*	*	N/A	N/A	*	N/A	*	*	N/A	N/A	N/A	*	N/A
Thrive Point Acad*	34.1	N/A	*	23.0	30.7	*	*	39.1	26.0	31.4	25.0	N/A	N/A	N/A	26.9	N/A

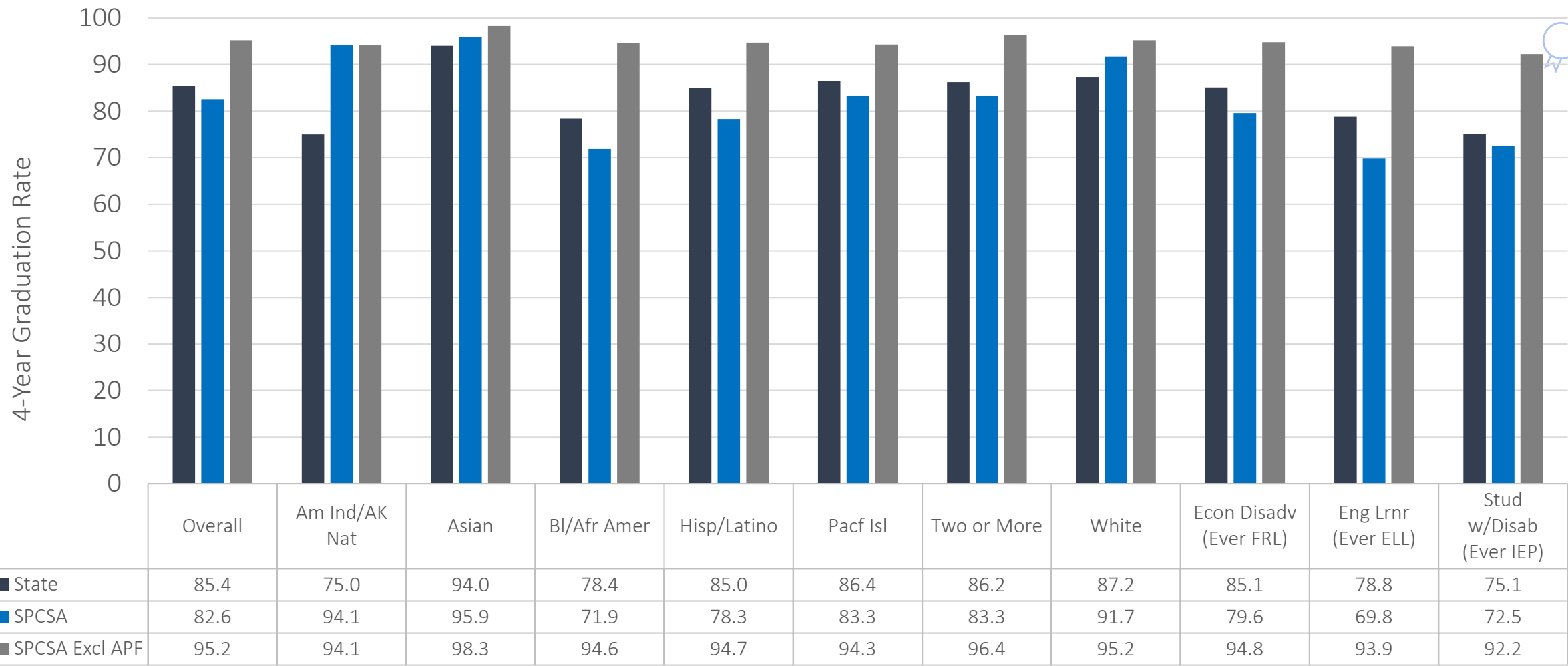
Data retrieved from the [Nevada Accountability Portal](#). To protect student privacy, rates associated with populations >0 and <10 students are displayed with an asterisk (*), and rates >0 and <5, or >95, are shown as <5.0 and >95.0, respectively. N/A indicates the population did not exist. "SPCSA Excluding APF Sch." shows SPCSA rates excluding schools (noted with * in the school name) rated on the Nevada Alternative Performance Framework (APF), which serve unique populations such as students that are credit deficient.

4-Year Graduation Rates: SPCSA Student Group Trends

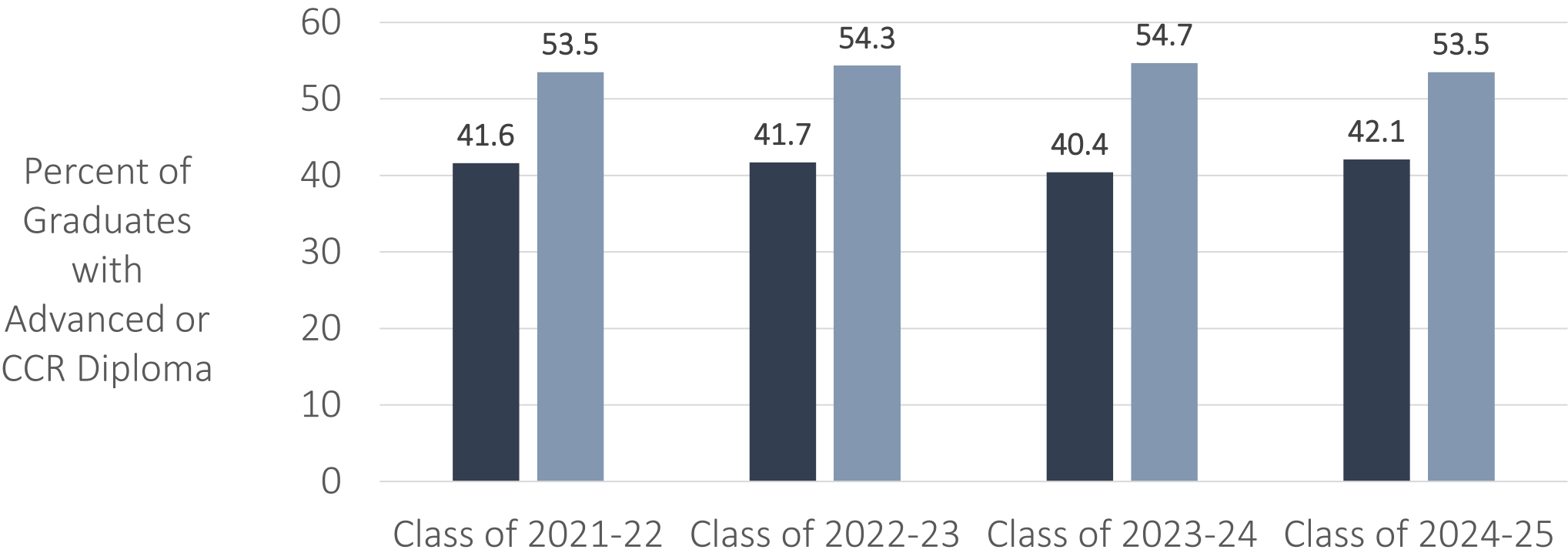
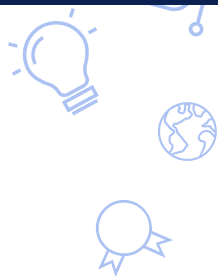


Data retrieved from the [Nevada Accountability Portal](#). The dashed line represents the SPCSA overall rate for the class of 2024-25, for ease of comparison. “Ever” denotes students were part of that population during their high school career.

4-Year Graduation Rates: SPCSA Comparison to State (Class of 2024-25)

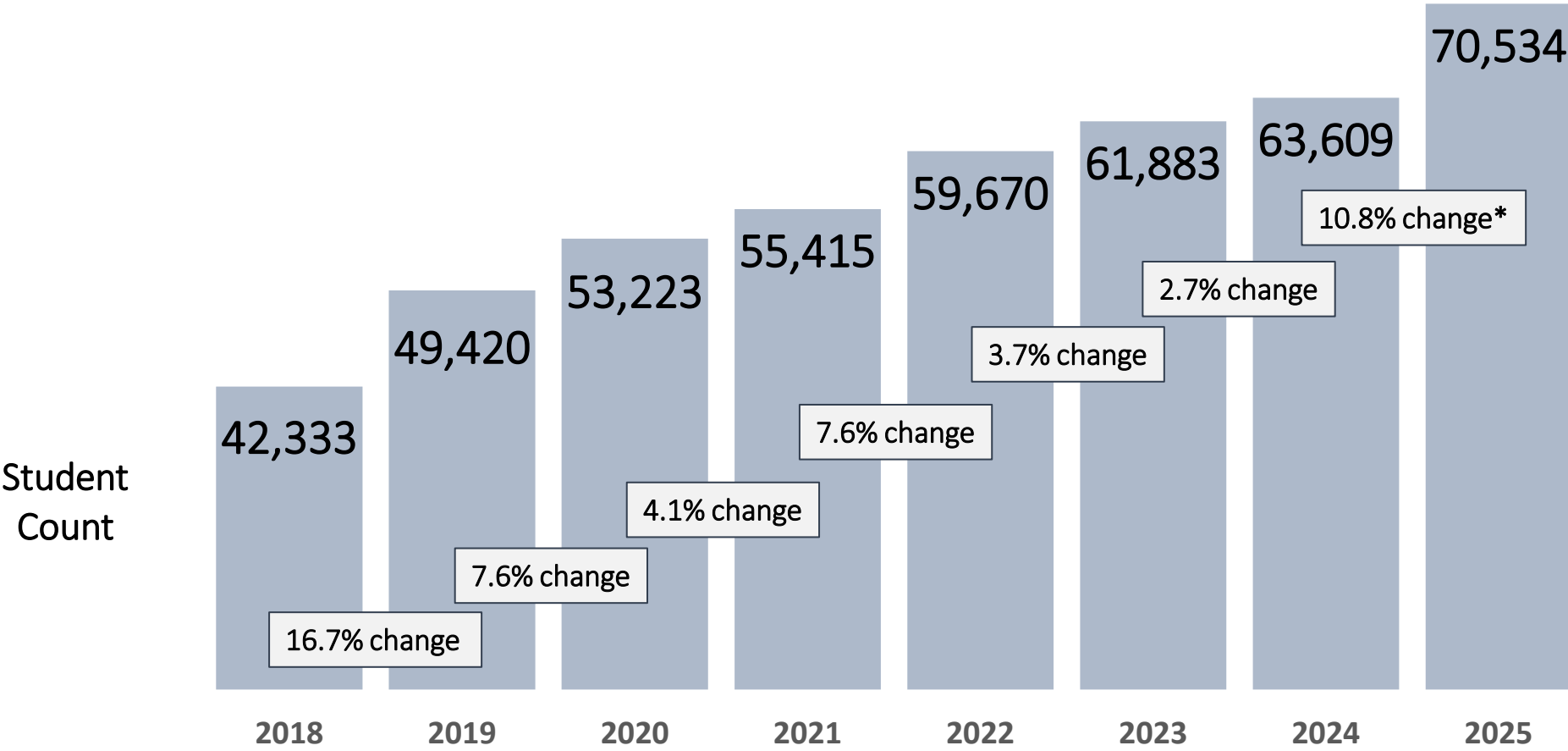


Advanced or CCR Diploma Rates: SPCSA Comparison to State



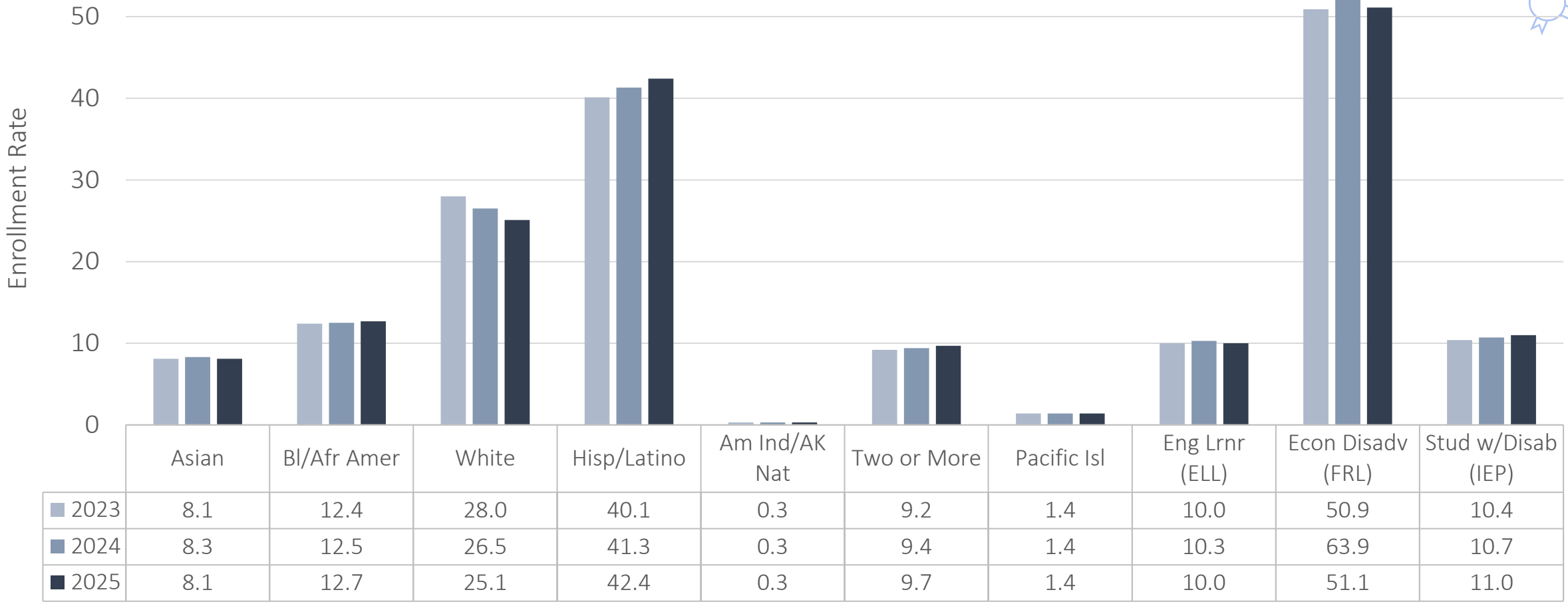
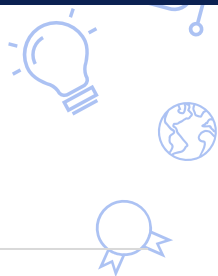
Enrollment and Demographics

Enrollment: SPCSA Trend



Enrollment counts are from the Nevada Department of Education validation day of the respective year. SPCSA counts for 2018 do not include former ASD schools. Percent changes are approximate and truncated to one decimal place. *Excluding the six existing charter schools (~5400 students) that transferred from Clark County School District to SPCSA sponsorship on July 1, 2025, the increase is 2.3%.

Enrollment: SPCSA Student Group Trends



Enrollment: SPCSA Student Groups Versus State

