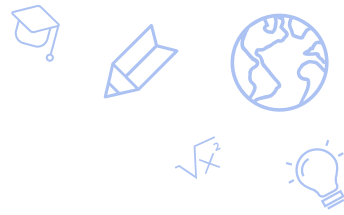


2025-26 School Year SPCSA Enrollment Data

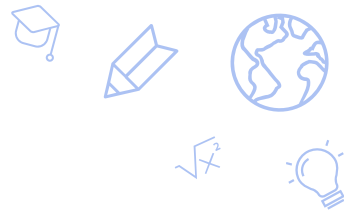
December 12, 2025

OUTLINE



- Overview of Annual Nevada Enrollment Data
- SPCSA Enrollment Highlights
- SPCSA Total Enrollment Trend
- Enrollment Across Nevada
- SPCSA Student Group Enrollment Trends
- SPCSA vs. State Student Group Enrollment
- Enrollment for Recently Opened SPCSA Schools
- Conclusions

Annual Nevada Enrollment Data: “Validation Day”



- Annually, around October 1st, the Nevada Department of Education (NDE) takes a snapshot of student enrollment across the state.
- These student-level enrollment data contain information including but not limited to race/ethnicity, free or reduced-price lunch (FRL) eligibility, whether the student has an individual education program (IEP), and English Language Learner (ELL) status.
- Data are validated by districts, SPCSA, and SPCSA schools.
- These enrollment data are used by the NDE, SPCSA, districts, schools, and other parties for official federal and state reporting and funding.

SPCSA Enrollment Highlights



The official SPCSA enrollment for 2025-26 is **70,534 students.**

The SPCSA becomes the **second largest LEA** in Nevada.

Over **60%** of SPCSA students are **enrolled at Title I schools.**

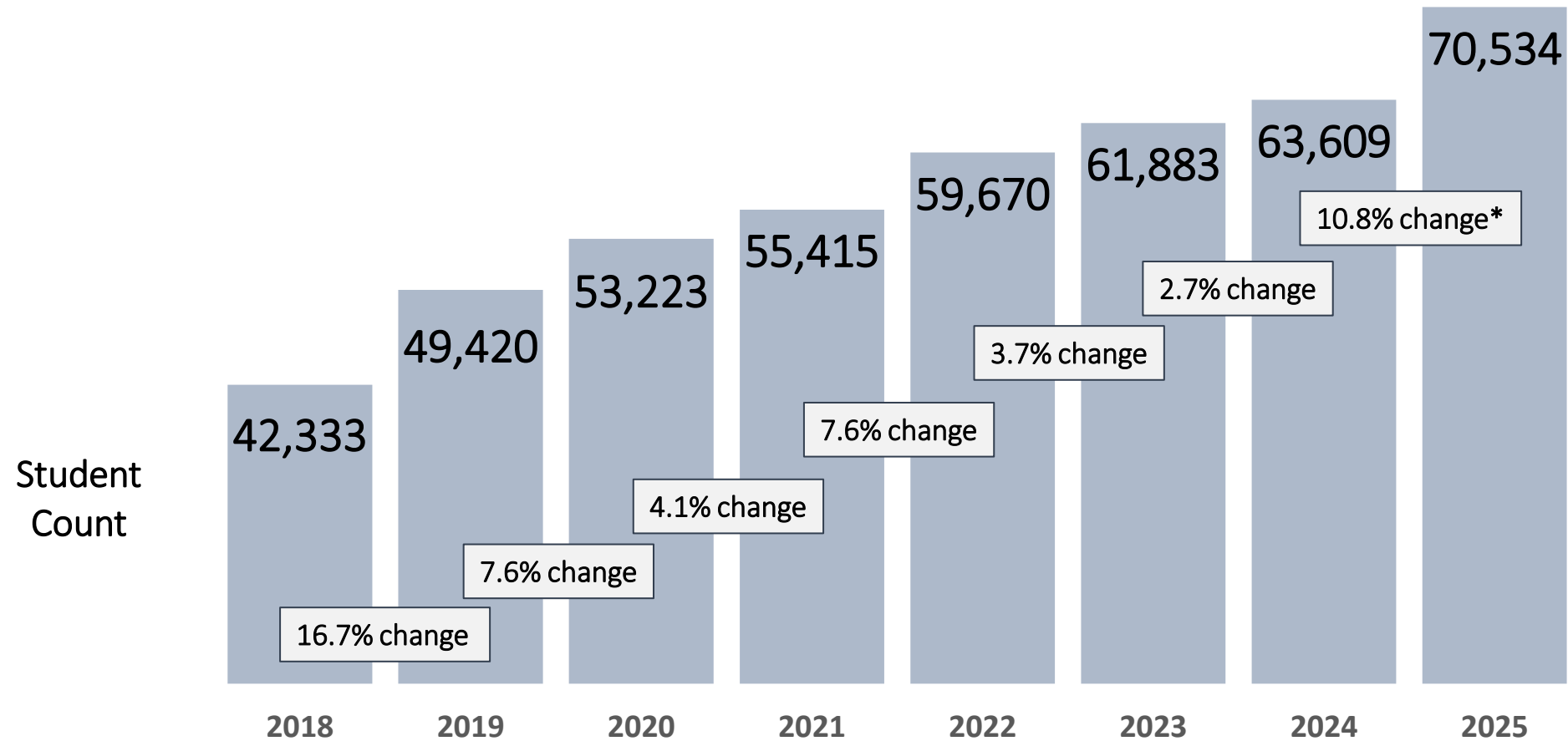
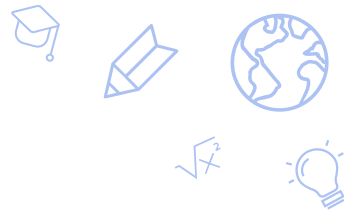
Year over year, SPCSA enrollment rates...

Increased for students identifying as **Black/African American, Hispanic/Latino, or Two or More Races.**

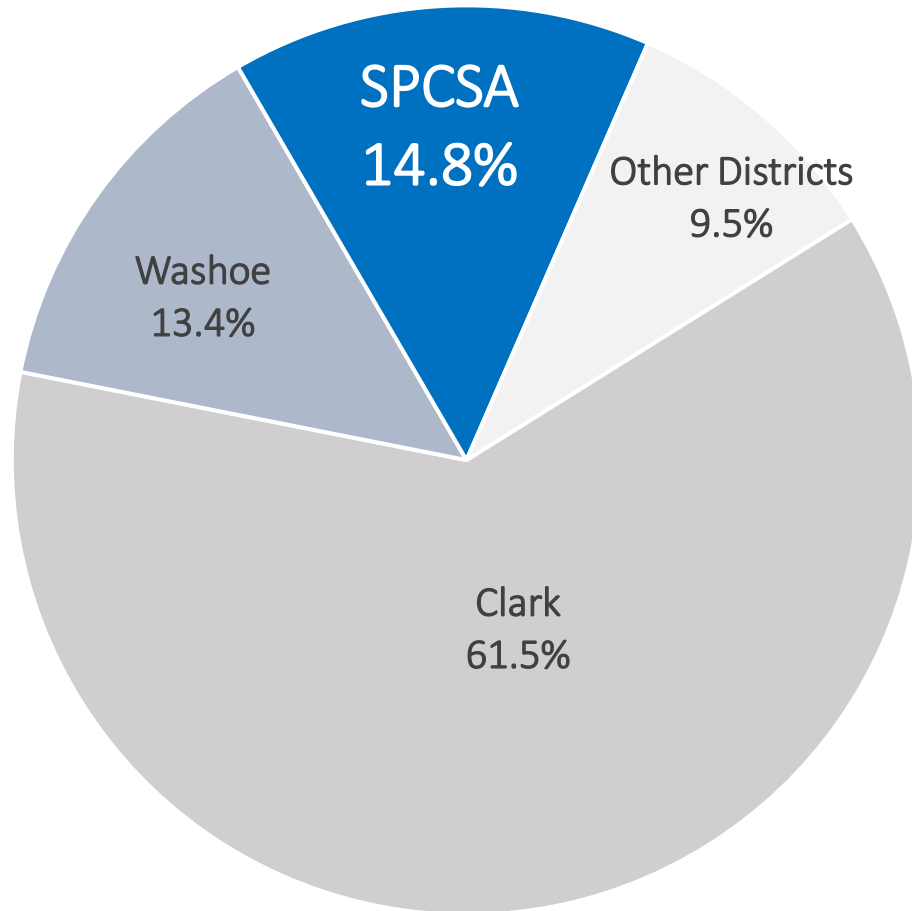
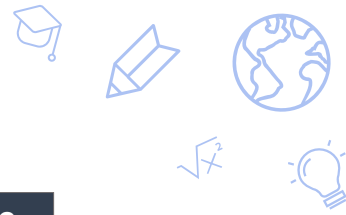
Increased for students with disabilities (**IEP**).

Decreased for students identifying as **White**, for economically disadvantaged students (**FRL**) and for English Language Learners (**ELL**).

SPCSA Total Enrollment Trend

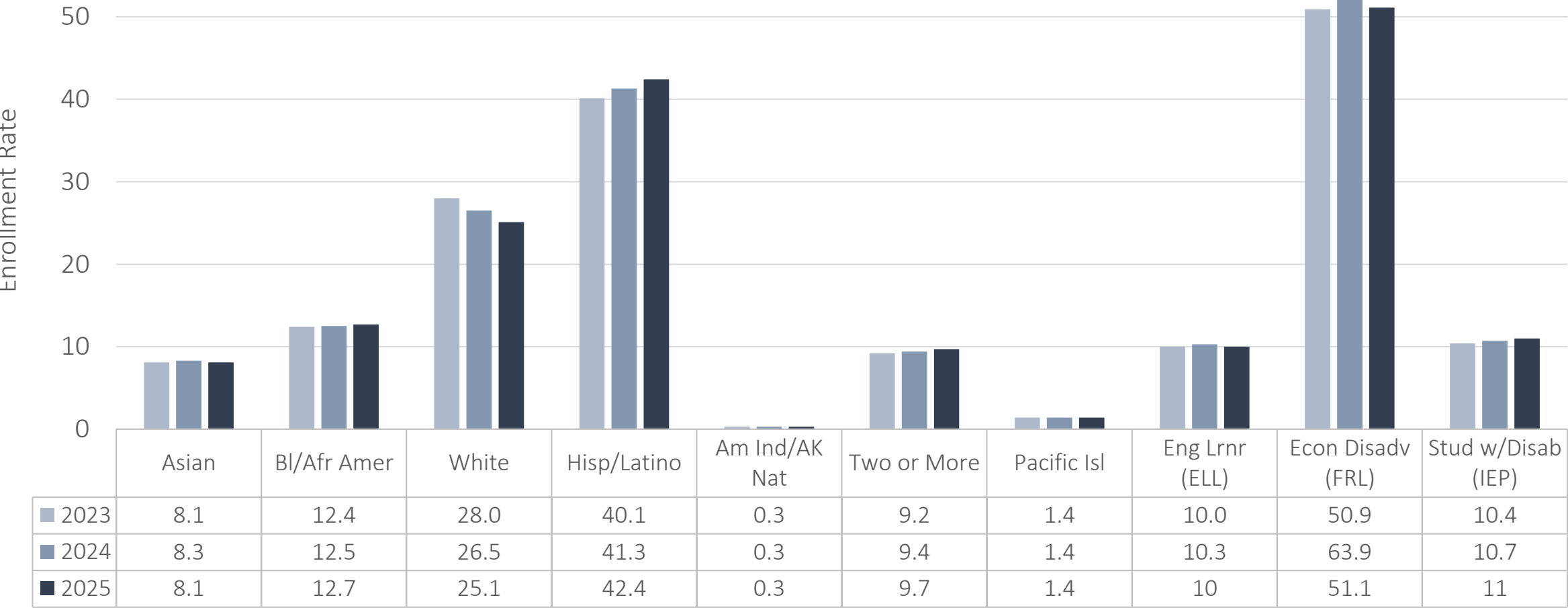
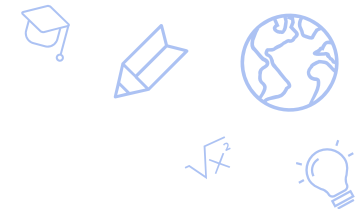


2025-26 Enrollment Across Nevada

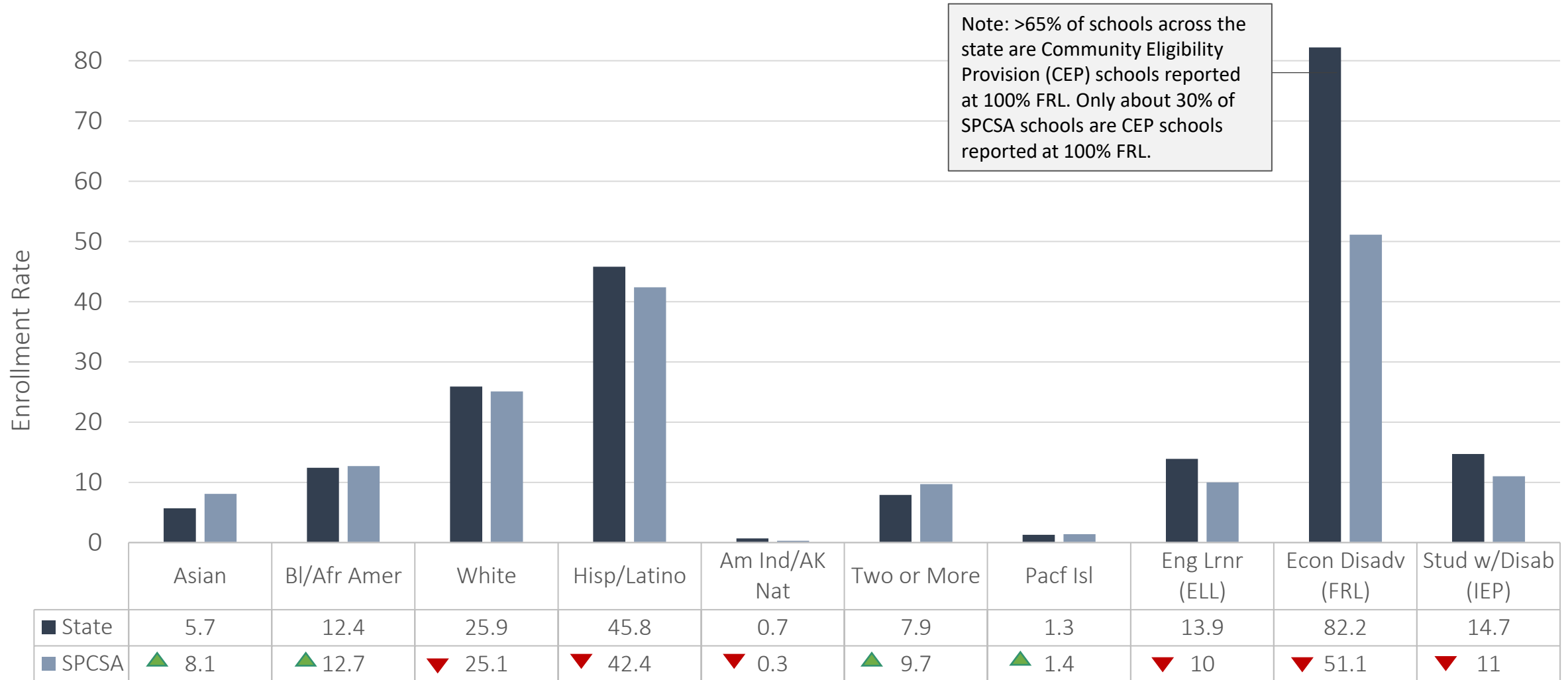
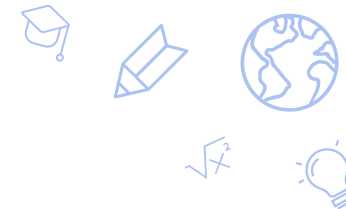


Entity	# Enrolled	% of State
STATE	473657	-
Clark	291587	61.5%
SPCSA	70534	14.8%
Washoe	63655	13.4%
Elko	9293	1.9%
Lyon	9060	1.9%
Carson City	7281	1.5%
Nye	5794	1.2%
Douglas	4745	1.0%
Humboldt	3176	0.6%
Churchill	3145	0.6%
White Pine	1243	0.2%
Lander	1047	0.2%
Lincoln	945	0.1%
Pershing	647	0.1%
Mineral	520	0.1%
Storey	408	<0.1%
Eureka	300	<0.1%
University	171	<0.1%
Esmeralda	69	<0.1%
Correctional	37	<0.1%

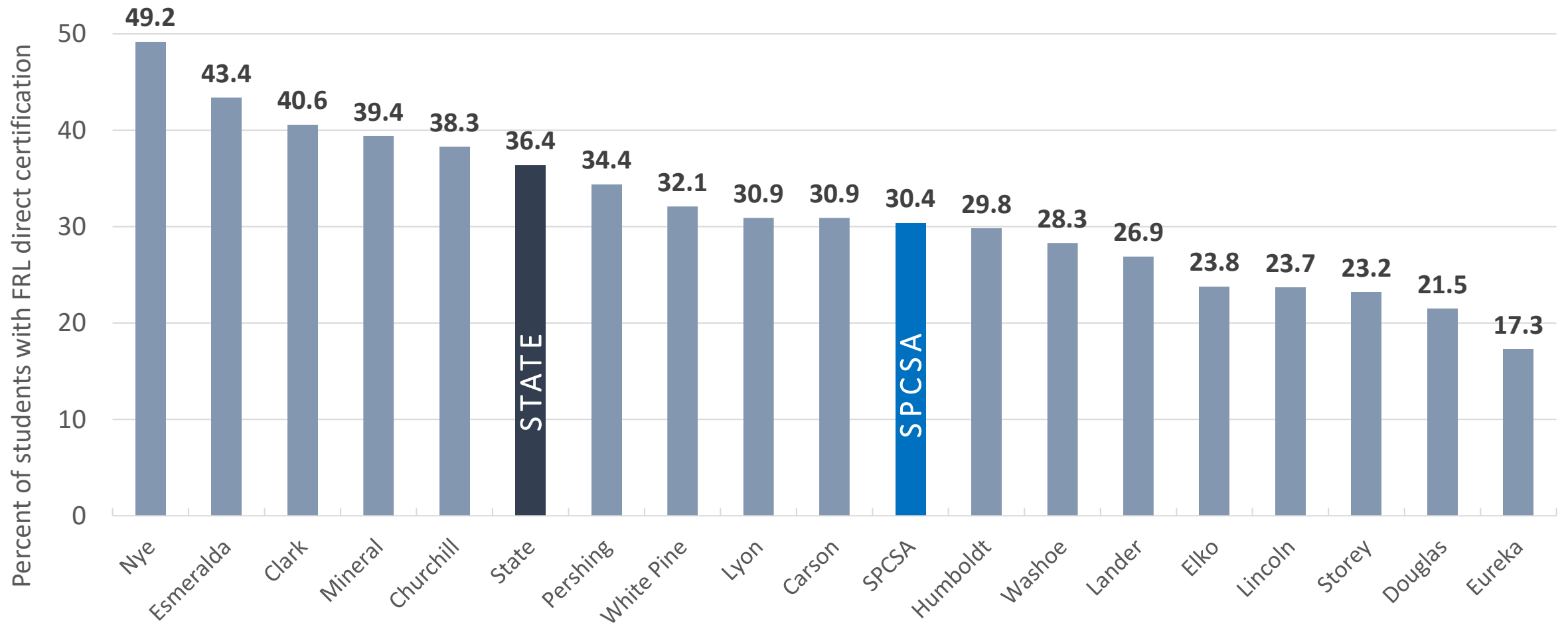
SPCSA Student Group Enrollment Trends



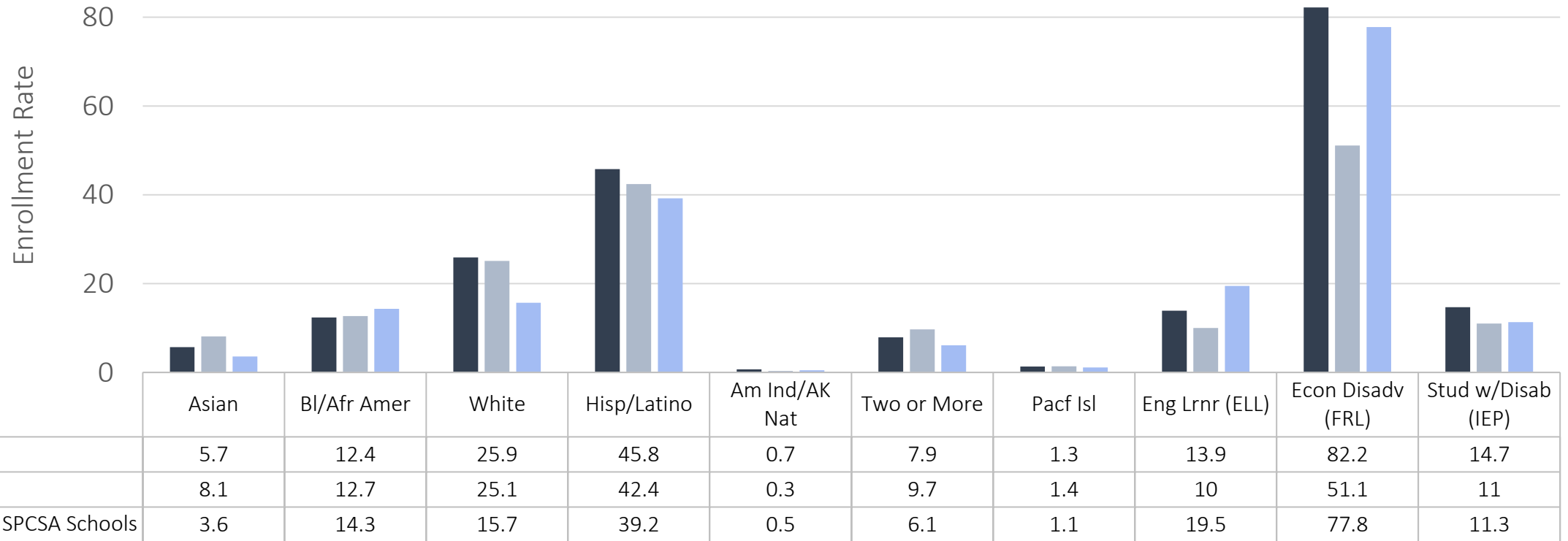
2025-26 SPCSA vs. State Student Group Enrollment



2025-26 SPCSA vs. Nevada Districts: FRL Direct Certification



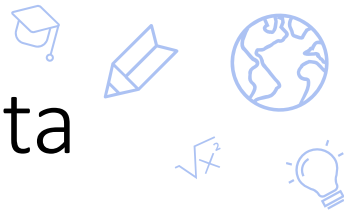
2025-26 Enrollment for Recently Opened SPCSA Schools



Schools included in “Recently Opened SPCSA Schools” are those approved post implementation of the SPCSA Needs Assessment:

- Opened 2020-21 SY: Explore Acad., Mater Acad. East, Nevada State HS Downtown Henderson, and Pinecrest Acad. Northern Nevada.
- Opened 2021-22 SY: Beacon Acad. (Sahara campus – but note data are included for the entire Beacon charter as data cannot be easily split out) and CIVICA.
- Opened 2022-23 SY: Coral Acad. of Science Las Vegas Cadence, Nevada State HS North Las Vegas, Pinecrest Acad. Virtual, Sage Collegiate, Strong Start Acad., and Young Women’s Leadership Acad.
- Opened 2023-24 SY: Pinecrest Acad. Springs and Southern NV Trades HS.
- Opened 2024-25 SY: Thrive Point Acad. and Vegas Vista Acad.
- Opened 2025-26 SY: Do & Be Arts Acad., Mater Acad. Cactus Park, NV Classical Acad. Elko, WYLEES

Takeaways: 2025-26 School Year SPCSA Enrollment Data



- The official SPCSA enrollment for the 2025-26 school year is 70,534 students—a 10.8% increase over the 2024-25 school year. Excluding the six existing charter schools (~5400 students) that transferred from Clark County School District to SPCSA sponsorship on July 1, 2025, the increase over the 2024-25 school year is 2.3%.
- This year, SPCSA became the second largest local education agency (LEA) in Nevada, mainly due to the influx of students from the Clark County School District charter schools that transferred to SPCSA sponsorship.
- Over 60% of SPCSA students are enrolled at Title I schools, up from about 50% last year.
- Year over year, SPCSA enrollment rates:
 - Increased for students identifying as Black/African American, Hispanic/Latino, or Two or More Races as well as students with disabilities (IEPs).
 - Decreased for students identifying as White, for economically disadvantaged students (FRL), and for English Language Learners (ELL).
- The SPCSA aims to serve a population representative of the state and the districts its schools are located within.
 - The SPCSA has made large gains over recent years regarding race/ethnicity, where enrollment rates are now comparable to those for the state.
 - The SPCSA still lags the state in percent of economically disadvantaged students (FRL), students with disabilities (IEP), and English Language Learners (ELLs) served, but progress has been made, especially as evidenced by new school enrollment data.
 - Of note, various historically underperforming student groups served by SPCSA schools continue to outperform their state peers in various measures of academic performance.

Thank you!

charterschools.nv.gov

