

# 2025-26 School Year SPCSA Enrollment Data

December 12, 2025

ATTACHMENT

# October 1, 2025 Enrollment Data by SPCSA School



Entity	Location (County)	Year Opened	Grades Served	Title I Status	Oct 1, 2025 Enrollment	% Amer Ind / AK Native	% Asian	% Black / Afr Amer	% Hispanic / Latino	% Pacific Isl	% Two or More Races	% White	% ELL	% FRL	% IEP	% Homeless	% Foster	% Military	% GATE	% 504
STATE	-	-	-	-	473657	0.7	5.7	12.4	45.8	1.3	7.9	25.9	13.9	82.2	14.7	<5.0	<5.0	<5.0	NA	NA
SPCSA	-	-	-	-	70534	0.3	8.1	12.7	42.4	1.4	9.7	25.1	10	51.1	11	<5.0	<5.0	<5.0	<5.0	<5.0
Alpine Acad	Washoe	2009-10	9-12	Y	232	0.4	2.1	3	28.4	0.8	9.4	55.6	0	26.2	18.5	0	*	*	0	7.3
Amplus Durango	Clark	2014-15	K-12	N	1810	0.1	22.4	20.8	21.4	2	8.3	24.6	6.4	23.1	7.9	<5.0	0	0	<5.0	<5.0
Amplus Rainbow	Clark	2020-21	K-5	Y	628	0	28.8	13.6	21.1	0.7	11.7	23.7	7.9	29.2	6.2	*	0	0	5.7	*
Beacon Acad	Clark	2008-09	9-12	Y	1087	0.2	1.4	25.5	54.3	1.5	8	8.7	20.1	87.6	19.4	10.3	<5.0	0	0	<5.0
CASLV Cadence	Clark	2022-23	K-11	Y	1653	0.1	16.1	9.8	39.5	1.2	12.2	20.7	7.9	44.2	7.5	<5.0	*	<5.0	0	<5.0
CASLV Centennial	Clark	2016-17	K-8	N	706	0.1	11.8	8	32.4	1.1	13.7	32.5	<5.0	24.3	9.3	*	*	21.1	0	<5.0
CASLV Eastgate	Clark	2018-19	K-5	Y	603	0	20.3	6.6	40.7	0.4	11.7	19.9	8.4	39.8	10.9	*	*	*	0	*
CASLV Nellis AFB	Clark	2016-17	PK-8	N	902	0.6	4.6	11.7	30.1	1.8	16.1	34.7	<5.0	33.3	14.5	0	0	91.6	7.4	5.7
CASLV Sandy Ridge	Clark	2006-07	8-12	N	871	0.2	24.4	7.2	20.4	1	11.4	35.1	<5.0	26	7.4	*	0	<5.0	0	6.3
CASLV Tamarus	Clark	2011-12	K-4	N	391	0.2	30.1	7.4	21.2	0.7	11.2	28.9	9.4	30.4	<5.0	0	0	*	0	*
CASLV Windmill	Clark	2011-12	5-7	N	426	0	31.6	5.6	22.5	0.9	13.1	26	<5.0	31.2	<5.0	0	0	*	0	<5.0
CIVICA	Clark	2021-22	PK-11	Y	1437	0.1	0.3	13.3	79.5	1.3	2.2	2.9	28	>95.0	9.3	*	<5.0	<5.0	0	*
Democracy Prep ES	Clark	2017-18	K-5	Y	394	0.2	0	78.4	18	0.7	1.7	0.7	10.6	>95.0	8.8	*	0	0	0	*
Democracy Prep HS	Clark	2017-18	9-12	Y	253	0	0	77.8	20.1	0.3	0.7	0.7	9	>95.0	12.2	0	0	0	0	0
Democracy Prep MS	Clark	2017-18	6-8	Y	280	0	0	70	27.8	0	2.1	0	9.2	>95.0	14.2	*	0	0	0	*
Discovery Hillpointe	Clark	2011-12	K-8	Y	386	0.5	2.5	11.3	43	0	11.9	30.5	13.7	36	15.8	0	0	0	0	<5.0
Discovery Sandhill	Clark	2018-19	K-5	Y	120	0	0.8	17.5	50.8	0.8	10	20	19.1	>95.0	14.1	*	0	0	0	*
Do & Be Arts Acad	Clark	2025-26	K-8	Y	175	0	1.1	50.8	33.1	1.1	3.4	10.2	*	70.8	10.8	0	*	0	0	*
Doral Cactus	Clark	2014-15	K-8	N	1006	0	20	5	25.2	1.6	15.3	32.6	<5.0	14.2	10.5	0	*	*	5.9	5
Doral Fire Mesa	Clark	2015-16	K-8	Y	1003	0	5.6	6.7	41.5	0.8	10.9	33.9	5	36.4	10.2	<5.0	*	<5.0	7.5	<5.0
Doral Northern Nevada	Washoe	2017-18	K-8	N	996	0.1	5.4	0.3	17.3	0.3	8.9	67.5	<5.0	7.6	10	*	0	<5.0	9	5.6
Doral Pebble	Clark	2017-18	K-8	N	1001	0	22.1	9.9	24.2	0.5	15.1	27.6	<5.0	21.9	11.6	*	*	*	5	<5.0
Doral Red Rock	Clark	2016-17	K-12	N	2428	0.2	9.7	5.1	27.5	1.1	12.6	43.4	<5.0	20.5	10.3	<5.0	*	<5.0	<5.0	6.5
Doral Saddle	Clark	2012-13	K-8	N	1004	0	22	8.9	25.2	0.7	12.9	29.9	5.7	26.7	9.5	*	0	*	8.9	<5.0
Elko Institute	Elko	2009-10	K-8	N	395	1.5	1.2	2.5	29.6	0	5.5	59.4	<5.0	22.7	15.1	*	0	*	0	*

Enrollment data are from the Nevada Department of Education (NDE) October 1 2025 validation day. Title I status and grades served are shown for the 2025-26 school year. Under all population categories except race/ethnicity, to protect student privacy, rates for populations >0 and <10 students are displayed with an asterisk (\*), and rates less than 5 (aside from 0) or greater than 95 percent are shown as <5.0 and >95.0, respectively. Rates were calculated and truncated to one decimal place by SPCSA staff. NA indicates data are not available. State data were retrieved from the NDE [website](#).

# October 1, 2025 Enrollment Data by SPCSA School



Entity	Location (County)	Year Opened	Grades Served	Title I Status	Oct 1, 2025 Enrollment	% Amer Ind / AK Native	% Asian	% Black / Afr Amer	% Hispanic / Latino	% Pacific Isl	% Two or More Races	% White	% ELL	% FRL	% IEP	% Homeless	% Foster	% Military	% GATE	% 504
STATE	-	-	-	-	473657	0.7	5.7	12.4	45.8	1.3	7.9	25.9	13.9	82.2	14.7	<5.0	<5.0	<5.0	NA	NA
SPCSA	-	-	-	-	70534	0.3	8.1	12.7	42.4	1.4	9.7	25.1	10	51.1	11	<5.0	<5.0	<5.0	<5.0	<5.0
Equipo Acad	Clark	2015-16	6-12	Y	949	0.1	0.6	3.1	93.4	0.2	0.9	1.4	38.4	>95.0	11	*	0	*	0	0
Explore Acad	Clark	2020-21	6-12	Y	329	0	2.1	20.9	53.1	3.3	10.3	10	14.5	77.8	17.6	*	*	*	0	*
Explore Knowledge	Clark	2025-26	K-12	Y	581	0.6	7.7	4.9	52.6	1.7	9.1	23	8.6	28.2	10.6	0	*	*	0	<5.0
Founders Acad	Clark	2014-15	K-12	N	1294	0.4	6.3	6.8	46.1	0.4	9.2	30.5	8.1	37.4	6.8	0	*	<5.0	0	<5.0
Freedom Classical Acad	Clark	2017-18	K-8	Y	1054	0.7	7.7	13	53	2	9.1	14.1	14.7	40.9	11.7	0	0	<5.0	<5.0	<5.0
FuturEdge Acad	Clark	2025-26	K-8	Y	318	0.9	0.9	55	28.6	1.2	8.8	4.4	7.2	>95.0	5.9	0	*	*	0	*
Futuro Acad	Clark	2017-18	PK-5	Y	484	0	1	9	80.3	0.4	2.2	6.8	41.1	>95.0	14.4	<5.0	*	*	0	*
Honors Acad	Washoe	2012-13	K-8	Y	202	0	0.4	3.4	30.1	0.9	8.4	56.4	*	24.2	22.2	7.4	0	*	*	6.4
Imagine Mountain View	Clark	2011-12	K-6	Y	673	0	8	18.8	38.3	1	15.4	18.2	11.8	45	12.3	*	*	5.4	0	*
Innovations Oakey	Clark	2025-26	K-6	Y	356	0.8	4.2	17.4	67.6	0.2	5	4.4	31.7	>95.0	16.5	0	*	0	0	*
Innovations Sahara	Clark	2025-26	7-12	Y	263	0	1.9	12.5	74.1	1.1	3	7.2	30.7	>95.0	19.7	0	0	0	0	*
Leadership Acad	State	2014-15	4-12	Y	314	0	7.3	6.6	31.2	0.6	13	41	*	21.9	10.1	0	0	*	0	7.3
Learning Bridge	White Pine	2013-14	K-8	N	171	1.1	0.5	1.1	22.2	0	8.1	66.6	*	20.4	16.9	0	0	0	0	0
Legacy Cadence	Clark	2018-19	K-8	Y	1286	0.1	6.7	16	38.9	2.5	13.1	22.3	8	57.5	8.9	0	*	<5.0	<5.0	<5.0
Legacy North Valley	Clark	2017-18	K-8	Y	1324	0.3	3.7	24.3	46.8	3.2	10.4	11.1	9.5	60	6.6	0	0	<5.0	<5.0	<5.0
Legacy Southwest	Clark	2019-20	K-8	N	1527	0.1	31.5	14.9	20.3	2.6	13	17.2	6.6	40.7	<5.0	0	0	<5.0	9	<5.0
Mater Bonanza	Clark	2017-18	PK-8	Y	1110	0	0.3	3.2	93	0.1	1.1	1.8	37.2	>95.0	7.6	6.9	*	*	0	<5.0
Mater Cactus Park	Clark	2025-26	PK-5	Y	479	0.2	0.4	26.5	63	0.8	5.8	3.1	32.9	>95.0	11.8	<5.0	0	*	0	*
Mater East Las Vegas	Clark	2020-21	PK-12	Y	2600	0.3	0.7	9.4	82.7	0.7	3	2.9	32.4	>95.0	10.2	<5.0	*	<5.0	0	<5.0
Mater Mountain Vista	Clark	2014-15	PK-8	Y	1108	0	1.8	6.1	84.7	0.5	2.3	4.3	36.1	>95.0	10.1	<5.0	0	0	0	<5.0
Mater Northern Nevada	Washoe	2017-18	K-8	Y	514	3.3	2.9	3.3	76.8	0.3	3.8	9.3	28	>95.0	17.7	<5.0	*	*	0	*
Nevada Classical Elko	Elko	2025-26	K-3	N	83	1.2	1.2	0	24	0	2.4	71	0	24	*	0	0	0	0	0
Nevada Connections	State	2006-07	9-12	Y	1283	1	3.2	10.9	32.2	1.5	12.2	38.7	<5.0	48.6	12.4	<5.0	*	5.8	0	5.1
Nevada Prep	Clark	2018-19	K-8	Y	470	0.6	0.8	15.1	72.9	0.4	4.4	5.5	25.3	>95.0	9.7	0	0	0	0	*
Nevada Rise	Clark	2018-19	K-5	Y	362	0.2	4.4	17.1	62.9	2.2	8.5	4.4	15.7	>95.0	11.8	<5.0	0	*	0	<5.0

Enrollment data are from the Nevada Department of Education (NDE) October 1 2025 validation day. Title I status and grades served are shown for the 2025-26 school year. Under all population categories except race/ethnicity, to protect student privacy, rates for populations >0 and <10 students are displayed with an asterisk (\*), and rates less than 5 (aside from 0) or greater than 95 percent are shown as <5.0 and >95.0, respectively. Rates were calculated and truncated to one decimal place by SPCSA staff. NA indicates data are not available. State data were retrieved from the NDE [website](#).

# October 1, 2025 Enrollment Data by SPCSA School



Entity	Location (County)	Year Opened	Grades Served	Title I Status	Oct 1, 2024 Enrollment	% Amer Ind / AK Native	% Asian	% Black / Afr Amer	% Hispanic / Latino	% Pacific Isl	% Two or More Races	% White	% ELL	% FRL	% IEP	% Homeless	% Foster	% Military	% GATE	% 504
STATE	-	-	-	-	473657	0.7	5.7	12.4	45.8	1.3	7.9	25.9	13.9	82.2	14.7	<5.0	<5.0	<5.0	NA	NA
SPCSA	-	-	-	-	70534	0.3	8.1	12.7	42.4	1.4	9.7	25.1	10	51.1	11	<5.0	<5.0	<5.0	<5.0	<5.0
Nevada Virtual	State	2007-08	6-12	Y	1402	1.7	6.7	22.1	38.7	2.7	0	27.7	6.2	55	16.2	*	0	*	0	<5.0
NSHS Downtown	Clark	2017-18	11-12	Y	9	11.1	11.1	11.1	66.6	0	0	0	*	*	0	0	0	0	0	0
NSHS Dtown Henderson	Clark	2020-21	11-12	N	92	0	6.5	4.3	10.8	1	7.6	69.5	*	17.3	*	0	*	*	0	*
NSHS Henderson	Clark	2003-04	11-12	N	174	0	10.9	4	33.3	2.2	10.9	38.5	*	28.1	0	0	0	7.4	0	7.4
NSHS Meadowwood	Washoe	2018-19	11-12	N	18	0	0	0	5.5	5.5	0	88.8	0	0	0	0	0	*	0	*
NSHS North Las Vegas	Clark	2022-23	11-12	N	54	0	1.8	20.3	48.1	0	5.5	24	*	57.4	*	0	0	*	0	*
NSHS Northwest	Clark	2020-21	11-12	N	116	0	5.1	6	20.6	1.7	12	54.3	*	18.1	0	0	0	*	0	*
NSHS Southwest	Clark	2019-20	11-12	N	148	0	14.1	29	18.9	0.6	13.5	23.6	6.7	31.7	0	0	0	*	0	*
NSHS Summerlin	Clark	2014-15	11-12	N	126	0	10.3	21.4	35.7	1.5	8.7	22.2	*	45.2	*	*	0	*	0	*
NSHS Sunrise	Clark	2018-19	11-12	Y	50	0	4	12	68	2	6	8	*	64	0	0	0	*	0	0
Oasis Acad	Churchill	2011-12	K-12	N	837	1.1	1.9	0.5	20.4	0	9.9	65.9	<5.0	32.8	15.6	6	*	16	0	<5.0
Odyssey	Clark	2025-26	K-12	Y	2391	0.2	3.3	10.4	42.9	0.8	12.3	29.7	6.4	52.1	15.2	0	*	*	0	5.6
Pinecrest Cadence	Clark	2016-17	K-12	N	2426	0.3	7.9	5.8	36.6	2.3	10	36.9	<5.0	30.3	12.1	*	*	<5.0	<5.0	<5.0
Pinecrest Horizon	Clark	2011-12	K-5	Y	882	0	6.2	6.8	34.8	0.7	11.6	39.6	5.3	37.7	12.5	<5.0	*	<5.0	<5.0	<5.0
Pinecrest Inspirada	Clark	2015-16	K-8	N	1198	0	17.6	3.6	22.7	1.5	14.1	40.3	<5.0	12.8	8.1	*	0	<5.0	11.1	5.4
Pinecrest Northern NV	Washoe	2020-21	K-8	N	1051	3.3	3	1.3	22.5	0.3	5.8	63.4	<5.0	19.5	14.7	*	*	<5.0	8.4	6.8
Pinecrest Sloan Canyon	Clark	2019-20	K-12	N	2414	0.2	17.7	4.9	26	2.9	15.1	32.9	<5.0	20.8	8	<5.0	0	<5.0	<5.0	7.2
Pinecrest Springs	Clark	2023-24	K-5	Y	378	1	7.1	17.7	48.4	0.7	10.3	14.5	11.6	>95.0	11.9	<5.0	0	<5.0	0	*
Pinecrest St Rose	Clark	2015-16	K-8	N	1032	0.2	16.1	6.6	30.2	2.7	14.5	29.3	<5.0	26.3	8.1	*	0	*	8.3	<5.0
Pinecrest Virtual	Clark	2022-23	6-12	Y	144	0	4.8	8.3	30.5	1.3	18.7	36.1	*	29.8	9.7	0	0	*	0	*
Quest Northwest	Clark	2015-16	K-8	Y	415	0.2	2.8	40.9	39.2	0.2	7.2	9.1	8.4	>95.0	10.3	7.4	0	*	0	<5.0
Rainbow Dreams Acad	Clark	2025-26	PK-K	Y	229	0	0.4	66.8	23.1	0.8	7.8	0.8	0	>95.0	*	0	*	*	0	0
Sage Collegiate	Clark	2022-23	K-8	Y	244	0	0.8	9.8	55.7	0.4	5.3	27.8	35.6	>95.0	12.7	*	*	0	0	*
Signature Prep	Clark	2019-20	K-8	Y	906	0.3	4.9	15.1	44	2	13	20.4	7.9	61.5	14.5	<5.0	*	*	0	*
Silver Sands	Clark	2009-10	K-8	Y	188	0.5	7.9	5.8	58.5	0	13.2	13.8	12.2	42.5	14.8	0	0	0	0	*

Enrollment data are from the Nevada Department of Education (NDE) October 1 2025 validation day. Title I status and grades served are shown for the 2025-26 school year. Under all population categories except race/ethnicity, to protect student privacy, rates for populations >0 and <10 students are displayed with an asterisk (\*), and rates less than 5 (aside from 0) or greater than 95 percent are shown as <5.0 and >95.0, respectively. Rates were calculated and truncated to one decimal place by SPCSA staff. NA indicates data are not available. State data were retrieved from the NDE [website](#).

# October 1, 2025 Enrollment Data by SPCSA School



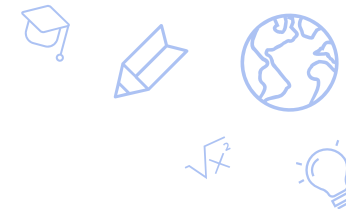
Entity	Location (County)	Year Opened	Grades Served	Title I Status	Oct 1, 2024 Enrollment	% Amer Ind / AK Native	% Asian	% Black / Afr Amer	% Hispanic / Latino	% Pacific Isl	% Two or More Races	% White	% ELL	% FRL	% IEP	% Homeless	% Foster	% Military	% GATE	% 504
STATE	-	-	-	-	473657	0.7	5.7	12.4	45.8	1.3	7.9	25.9	13.9	82.2	14.7	<5.0	<5.0	<5.0	NA	NA
SPCSA	-	-	-	-	70534	0.3	8.1	12.7	42.4	1.4	9.7	25.1	10	51.1	11	<5.0	<5.0	<5.0	<5.0	<5.0
SLAM NV	Clark	2016-17	K-12	Y	1988	0.2	3	12.8	61.2	2.4	10.4	9.7	12.4	>95.0	12.1	<5.0	*	<5.0	0	<5.0
Somerset Aliante	Clark	2018-19	K-8	N	1171	0	7	12.1	40.5	1.3	13.3	25.5	<5.0	24.7	11.1	*	*	6.5	<5.0	<5.0
Somerset Lone Mtn	Clark	2015-16	K-8	Y	992	0.1	3.9	10.4	43.1	1.4	9.5	31.3	<5.0	35.8	15.5	*	*	<5.0	11.2	<5.0
Somerset Losee	Clark	2013-14	K-12	Y	2460	0.3	3.8	24.9	51.5	1.3	9.8	8.1	7.1	51.5	11.4	<5.0	*	<5.0	0	<5.0
Somerset N Las Vegas	Clark	2013-14	K-5	Y	757	0	6	26.2	39.8	1	11.4	15.1	5.8	50.4	10.4	*	*	5.5	0	*
Somerset Sky Pointe	Clark	2013-14	K-12	N	2184	0	4.5	6.7	32.3	1.2	10.5	44.5	<5.0	20.6	15	*	0	<5.0	<5.0	5.7
Somerset Skye Canyon	Clark	2018-19	K-8	N	996	0.1	5.9	4	29.2	0.7	12.9	47	<5.0	13.6	12.8	0	0	<5.0	<5.0	<5.0
Somerset Stephanie	Clark	2010-11	PK-8	Y	974	0	8	11.3	39.6	2	10.7	28.1	6	40.3	15.9	<5.0	0	<5.0	<5.0	<5.0
Southern NV Trades HS	Clark	2023-24	9-12	Y	250	0	0.4	28.4	60.8	0	2.8	7.6	18	>95.0	9.2	*	*	0	0	*
Strong Start Acad	Clark	2022-23	K-5	Y	264	0	0.7	10.9	79.5	0	4.1	4.5	23.8	>95.0	6.8	0	0	0	0	*
The Delta Acad	Clark	2025-26	6-12	Y	1315	0.5	2	21.2	38.3	3.6	12.5	21.5	7.9	>95.0	10.2	0	*	*	0	<5.0
Thrive Point	Clark	2024-25	9-12	Y	357	0.2	1.6	23.8	50.1	1.4	6.1	16.5	15.1	58.5	14	9.2	0	*	0	*
Vegas Vista	Clark	2024-25	K-5	Y	270	1.1	2.9	18.1	58.5	1.8	8.5	8.8	<5.0	>95.0	8.5	0	0	0	0	0
WYLEES	Clark	2025-26	6-8	N	203	0	1.9	27.5	39.4	5.4	0.9	24.6	15.7	72.4	10.8	11.3	0	0	0	*
YWLA	Clark	2022-23	6-10	Y	108	0.9	0	28.7	59.2	0.9	1.8	8.3	17.5	>95.0	11.1	*	0	0	0	*

Enrollment data are from the Nevada Department of Education (NDE) October 1 2025 validation day. Title I status and grades served are shown for the 2025-26 school year. Under all population categories except race/ethnicity, to protect student privacy, rates for populations >0 and <10 students are displayed with an asterisk (\*), and rates less than 5 (aside from 0) or greater than 95 percent are shown as <5.0 and >95.0, respectively. Rates were calculated and truncated to one decimal place by SPCSA staff. NA indicates data are not available. State data were retrieved from the NDE [website](#).

# October 1, 2025 Enrollment Data by District SPCSA Schools are Located Within

Entity	Oct 1 2025 Enrollment	% Amer Ind / AK Native	% Asian	% Black / Afr Amer	% Hispanic / Latino	% Pacific Isl	% Two or More Races	% White	% ELL	% FRL	% IEP
STATE	473657	0.7	5.7	12.4	45.8	1.3	7.9	25.9	13.9	82.2	14.7
SPCSA	70534	0.3	8.1	12.7	42.4	1.4	9.7	25.1	10	51.1	11
Churchill County	3145	4.9	1.3	1.1	26.9	0.9	8.0	56.6	5.3	51.1	17.3
SPCSA Schools Within Churchill County	837	1.1	1.9	0.5	20.4	0	9.9	65.9	<5.0	32.8	15.6
Clark County	291587	0.3	6.1	16.2	48.9	1.4	8.1	18.6	15.7	>95.0	15.2
SPCSA Schools Within Clark County	63350	0.2	8.6	13.3	43.7	1.4	10	22.4	10.5	52.6	10.6
Elko County	9293	5.5	0.5	0.7	35.4	0.2	3.1	54.2	8.3	38.1	13.3
SPCSA Schools Within Elko County	478	1.4	1.2	2	28.6	0	5	61.5	<5.0	23	14.2
Washoe County	63655	0.9	4.3	2.8	44.7	1.6	6.4	39.0	14.4	61.2	16.5
SPCSA Schools Within Washoe County	3013	1.7	3.5	1.5	30.9	0.4	6.9	54.6	6.3	30	14.4
White Pine County	1243	3	0.8	0.3	22.3	0.2	5.8	67.2	<5.0	>95.0	19.3
SPCSA Schools Within White Pine County	171	1.1	0.5	1.1	22.2	0	8.1	66.6	<5.0	20.4	16.9

Enrollment data are from the Nevada Department of Education (NDE) October 1 2025 validation day. Title I status and grades served are shown for the 2025-26 school year. Under all population categories except race/ethnicity, to protect student privacy, rates for populations >0 and <10 students are displayed with an asterisk (\*), and rates less than 5 (aside from 0) or greater than 95 percent are shown as <5.0 and >95.0, respectively. Rates were calculated and truncated to one decimal place by SPCSA staff. NA indicates data are not available. State data were retrieved from the NDE [website](#).



# 2024-25 SPCSA vs. Nevada Districts: FRL Direct Certification Rates

Free- and Reduced-Price (FRL) enrollment rates reported in Nevada’s official validation day enrollment data are overinflated due to reporting of Community Eligibility Provision (CEP) schools and districts as 100% FRL. This results in inaccurate comparisons between the SPCSA and other districts / the state regarding FRL enrollment rates.

A comparison of FRL direct certification rates (students directly certified for FRL are automatically eligible for FRL due to their family receiving Medicaid, SNAP benefits, etc.) may result in more accurate comparisons between the SPCSA and other districts / the state.

In many cases, district FRL direct certification rates (see in yellow at right) are much lower than their reported FRL enrollment rates.

Entity	October 1 2025 % of students reported eligible for FRL	October 1 2025 % of students directly certified for FRL	Difference
Churchill County School District	51.1	38.3	12.8
Clark County School District	97.0	40.6	56.4
Douglas County School District	37.5	21.5	16.0
Elko County School District	38.1	23.8	14.3
Esmeralda County School District	100	43.4	56.6
Eureka County School District	22.3	17.3	5.0
Humboldt County School District	44.3	29.8	14.5
Lander County School District	98.9	26.9	72.0
Lincoln County School District	45.8	23.7	22.1
Lyon County School District	98.5	30.9	67.6
Mineral County School District	97.8	39.4	58.4
Nye County School District	99.0	49.2	49.8
Carson City School District	60.9	30.9	30.0
Pershing County School District	100	34.4	65.6
Storey County School District	31.6	23.2	8.4
Washoe County School District	61.2	28.3	32.9
White Pine County School District	97.8	32.1	65.7
<b>State Public Charter School Authority</b>	<b>51.1</b>	<b>30.4</b>	<b>20.7</b>
<b>State</b>	<b>82.2</b>	<b>36.4</b>	<b>45.8</b>