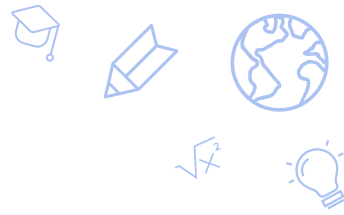


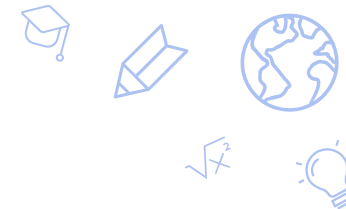
SPCSA Four-Year Graduation Rates Class of 2024-25

December 12, 2025

OUTLINE



- Graduation Rates Overview
- Highlights
- 4-Year Graduation Rates
 - SPCSA vs. State Trend
 - SPCSA vs. Nevada Districts
 - SPCSA Schools
 - SPCSA Student Group Trends
 - SPCSA vs. State Student Groups
- Advanced or CCR Diploma Rates
- Conclusions



Graduation Rates Overview

- Schools start with a cohort of 9th graders. The cohort is adjusted by adding students that transfer in and removing students that transfer out.
- At the end of four years, the 4-year graduation rate is calculated. Additionally, at the end of five years, an “extended” 5-year graduation rate is calculated.
 - $\# \text{ graduates} / (\# \text{ graduates} + \# \text{ non-graduates}) * 100$
- 4- and 5-year graduation rates are included in the annual high school NSPF (Nevada school ratings).
 - The 4-year graduation rate is worth up to 25 points, while the 5-year is worth up to 5 points.
 - The Advanced or CCR Diploma measure (which uses the 4-year data) is worth up to 5 points.
 - The NSPF is worth a possible 100 points.

SPCSA 4-Year Graduation Rates Summary



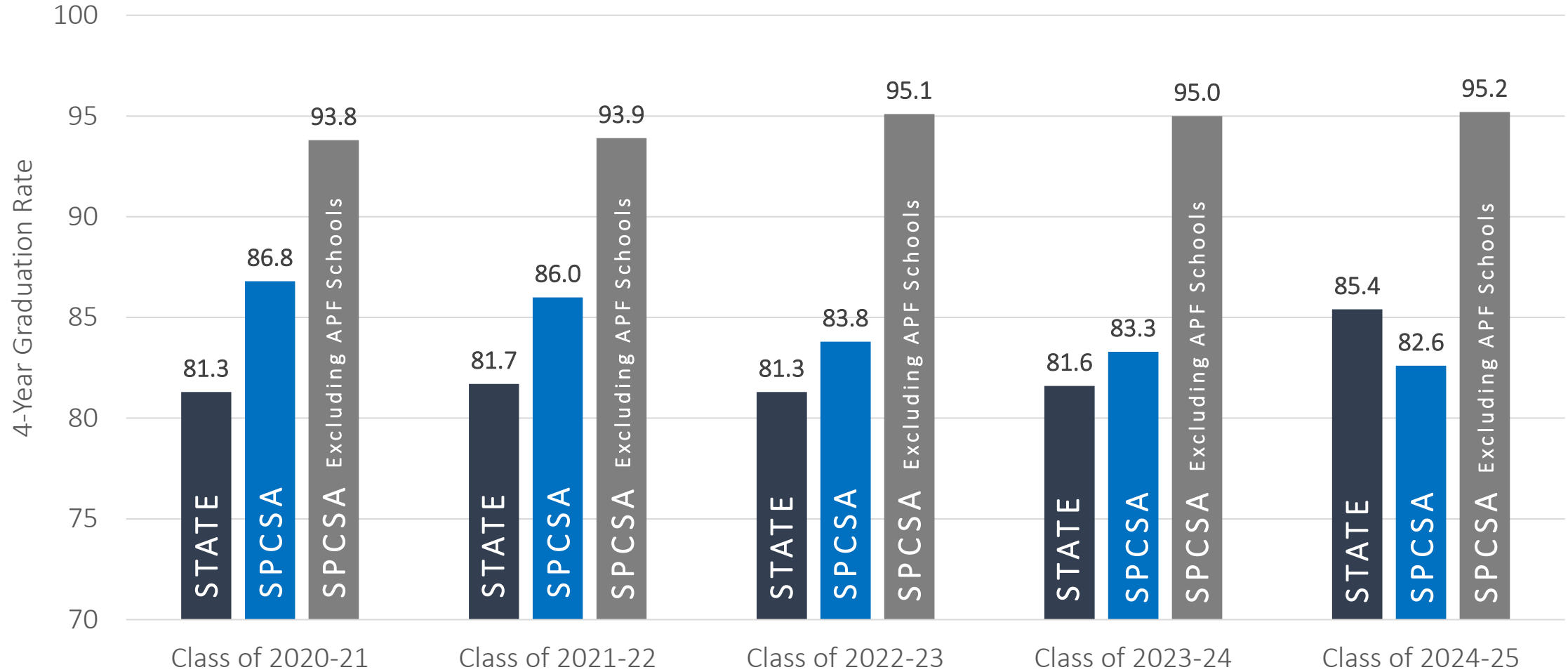
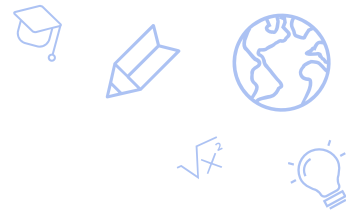
The 4-year graduation rate for the SPCSA class of 2024-25 was 82.6%, which was below the state rate of 85.4%. Excluding alternative schools, the SPCSA rate was 95.2%.

All but three SPCSA schools outperformed the state rate, while twenty-two are projected to earn the full 25 points under the 4-year graduation rate measure in next year's NSPF star ratings.

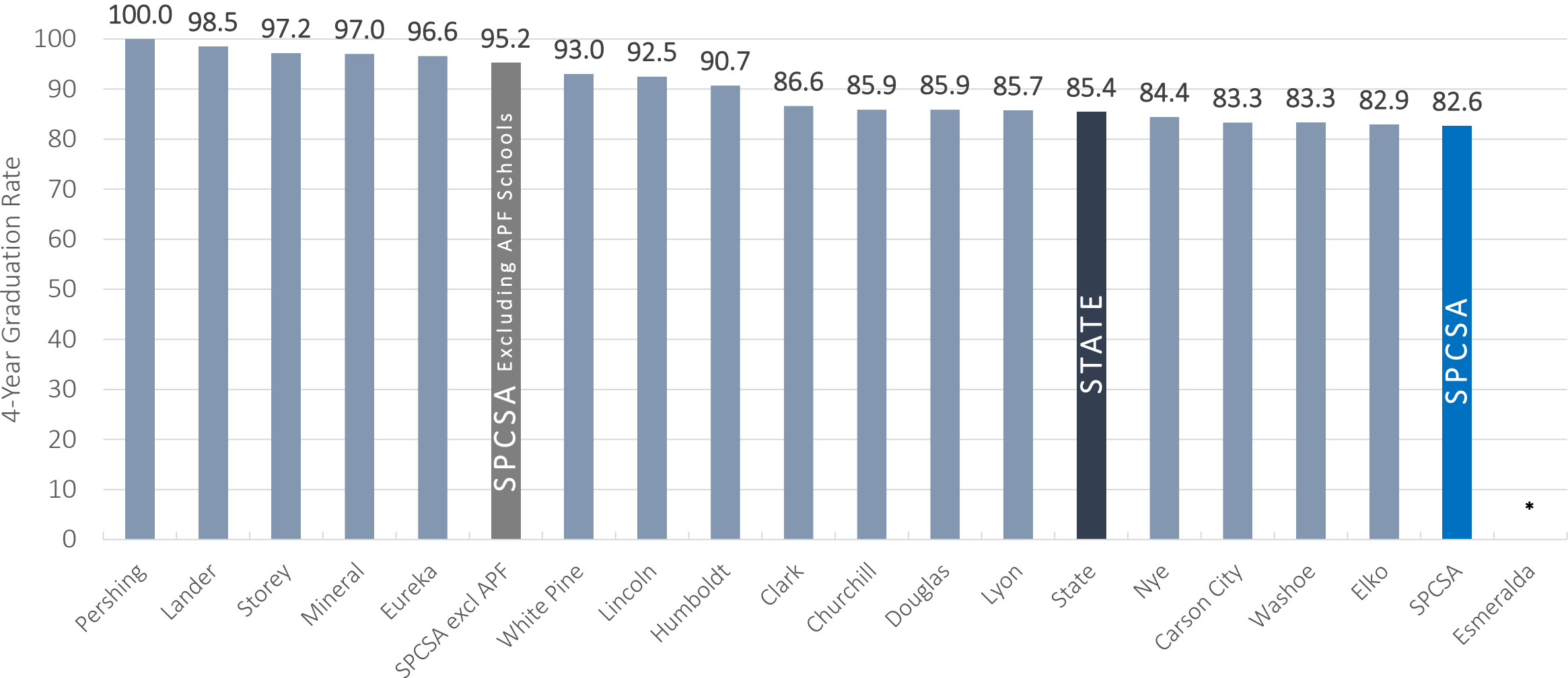
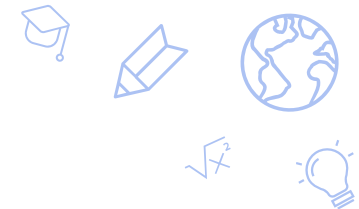
Only three SPCSA student groups outperformed their state groups, but excluding alternative schools, all SPCSA student groups outperformed their state groups.

More than half of SPCSA graduates were awarded a more rigorous Advanced or College and Career Ready (CCR) diploma.

SPCSA vs. State: 4-Year Graduation Rate Trend



SPCSA vs. Nevada: Class of 2024-25 4-Year Graduation Rates



SPCSA Schools: Class of 2024-25 4-Year Graduation Rates



Entity	# Graduates	# in Cohort	4-Year Graduation Rate
Alpine Acad	36	36	100%
Founders Acad	33	33	100%
NSHS Downtown	19	19	100%
NSHS Dwtm Henderson	60	60	100%
NSHS North Las Vegas	34	34	100%
NSHS Northwest	79	79	100%
NSHS Sunrise	20	20	100%
Oasis Acad	23	23	100%
Somerset Sky Pointe	181	181	100%
Mater East	209	210	99.5%
CASLV Sandy Ridge	168	169	99.4%
Pinecrest Cadence	155	156	99.3%
Pinecrest Sloan Canyon	143	144	99.3%
Amplus Durango	127	128	99.2%
SLAM	126	127	99.2%
NSHS Henderson	91	92	98.9%
NSHS Southwest	83	84	98.8%
Doral Red Rock	215	218	98.6%
Somerset Losee	188	191	98.4%
SPCSA Excluding APF Sch.	2774	137	95.2%
NSHS Summerlin	55	58	94.8%
Pinecrest Virtual	14	15	93.3%
Equipo Acad	102	113	90.2%
Leadership Acad	25	28	89.2%
Nevada Virtual	279	317	88.0%
Democracy Prep	59	69	85.5%

Entity	# Graduates	# in Cohort	4-Year Graduation Rate
State	34175	39975	85.4%
SPCSA	2956	3576	82.6%
Nevada Connections Acad	236	287	82.2%
Thrive Point Acad^	40	117	34.1%
Beacon Acad^	142	548	25.9%
Explore Acad	<10	<10	*
NSHS Meadowwood	<10	<10	*
Southern NV Trades HS	<10	<10	*

Schools above 89.4% earn the full 25 points in the NSPF 4-year graduation rate measure.

Data retrieved from the [Nevada Accountability Portal](#). “# in Cohort” is the sum of graduates plus non-graduates. “SPCSA Excluding APF Sch.” excludes schools (noted with ^ in the school name) rated on the Nevada Alternative Performance Framework (APF), which serve unique populations such as students that are credit deficient. * indicates the rate is hidden to protect student privacy due to population size <10.

SPCSA Schools: Changes in 4-Year Graduation Rates

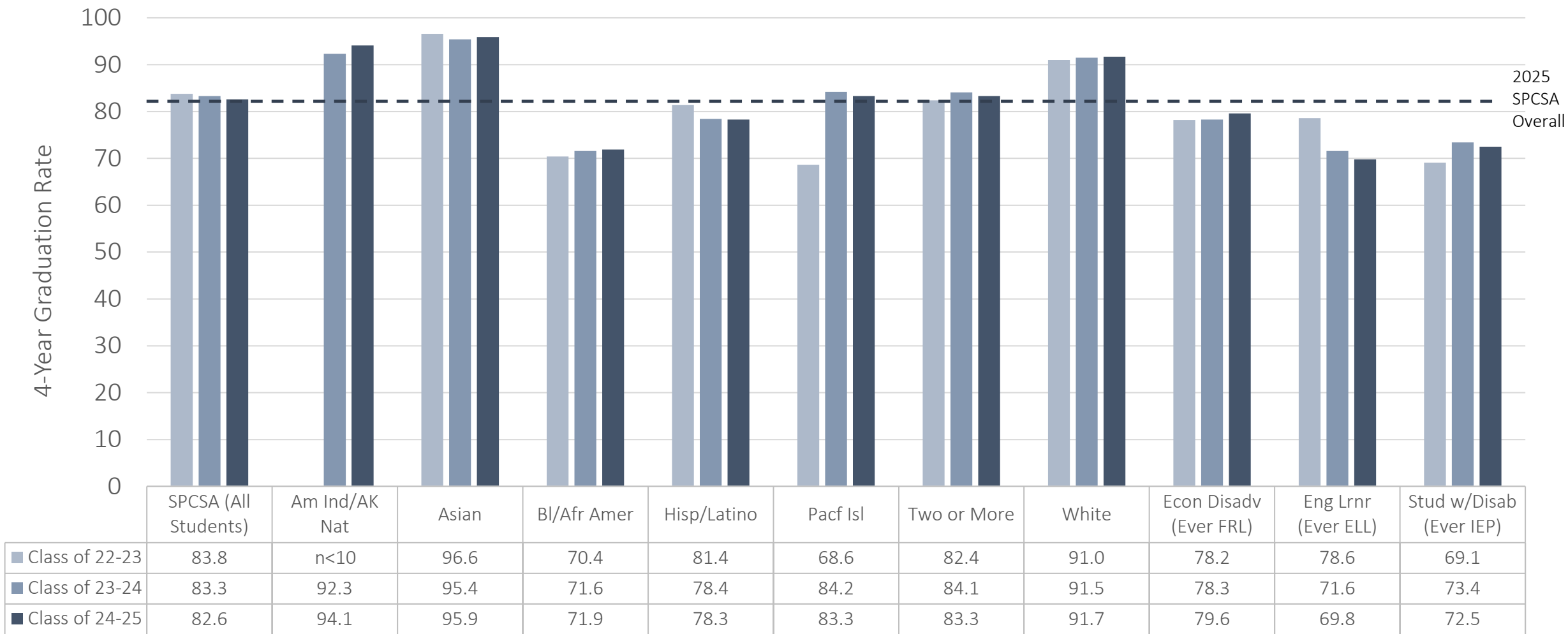
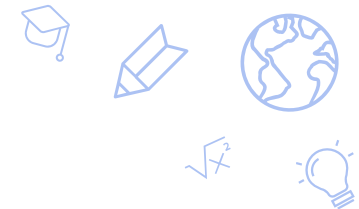


School	2024-25 Rate	2023-24 Rate	Change
Beacon Acad^	25.9%	19.1%	6.8
NSHS North Las Vegas	100.0%	95.7%	4.3
STATE	85.4%	81.6%	3.8
Alpine Acad	100.0%	97.3%	2.7
Democracy Prep	85.5%	83.3%	2.2
Mater East	99.5%	98.6%	0.9
Pinecrest Cadence	99.3%	98.5%	0.8
Somerset Sky Pointe	100.0%	99.4%	0.6
Nevada Connections	82.2%	81.9%	0.3
CASLV Sandy Ridge	99.4%	99.2%	0.2
Nevada Virtual	88.0%	87.8%	0.2
Pinecrest Sloan	99.3%	99.1%	0.2
SLAM	99.2%	99.0%	0.2
SPCSA Excluding APF	95.2%	95.0%	0.2
NSHS Southwest	98.8%	98.7%	0.1
Founders Acad	100.0%	100.0%	0.0
NSHS Downtown	100.0%	100.0%	0.0
NSHS Dwtm Henderson	100.0%	100.0%	0.0
NSHS Northwest	100.0%	100.0%	0.0

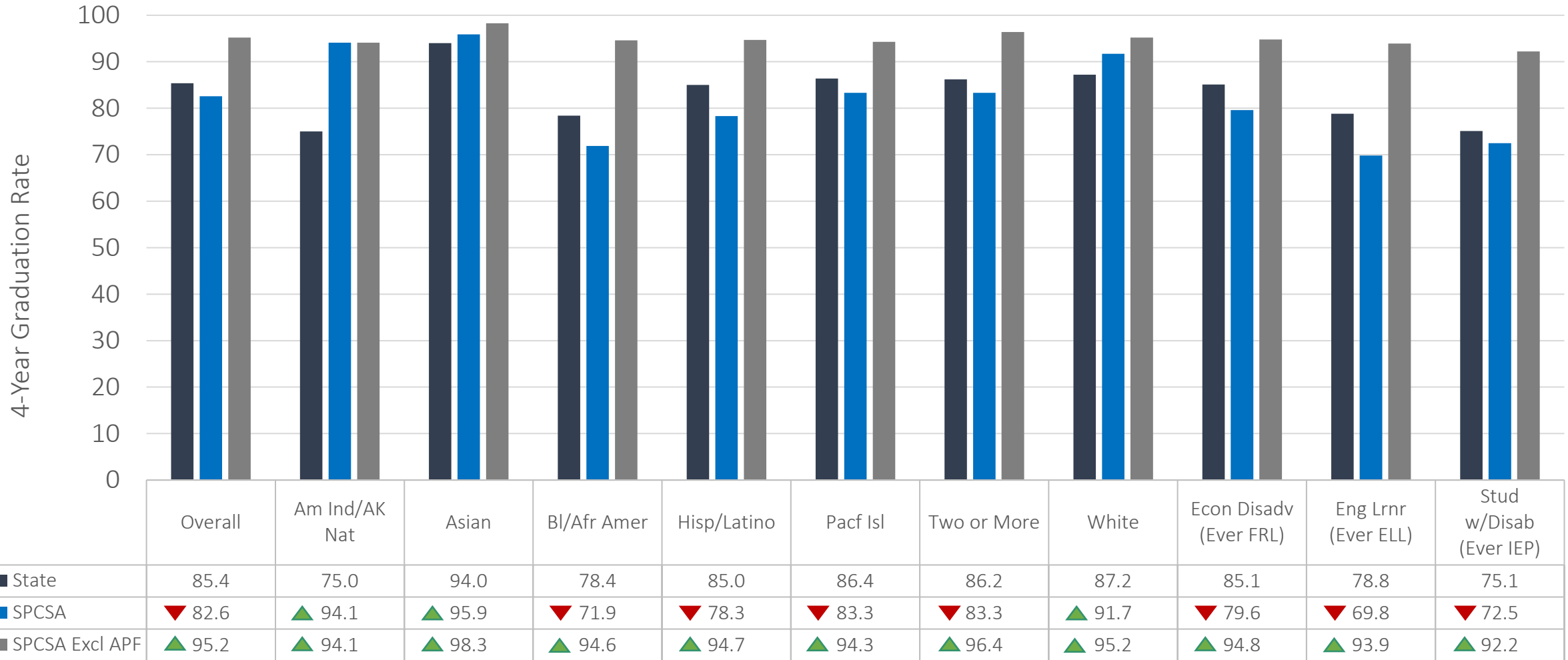
School	2024-25 Rate	2023-24 Rate	Change
NSHS Sunrise	100.0%	100.0%	0.0
Oasis Acad	100.0%	100.0%	0.0
NSHS Henderson	98.9%	99.2%	-0.3
Somerset Losee	98.4%	98.8%	-0.4
SPCSA	82.6%	83.3%	-0.7
Amplus Durango	99.2%	100.0%	-0.8
Leadership Acad	89.2%	90.0%	-0.8
Doral Red Rock	98.6%	99.5%	-0.9
NSHS Summerlin	94.8%	96.1%	-1.3
Equipo Acad	90.2%	94.4%	-4.2
Explore Acad	*	*	N/A
NSHS Meadowwood	*	95.2%	N/A
Pinecrest Virtual	93.3%	N/A	N/A
Southern NV Trades HS	*	N/A	N/A
Thrive Point Acad^	34.1	N/A	N/A

Data retrieved from the [Nevada Accountability Portal](#). Change is percentage point difference between years. ^Serves a unique population of at-risk students and is rated on the Nevada Alternative Performance Framework (APF). SPCSA Excluding APF” excludes schools rated on the APF. * indicates rate is hidden to protect student privacy due to population size <10.

SPCSA Student Groups: 4-Year Graduation Rate Trends

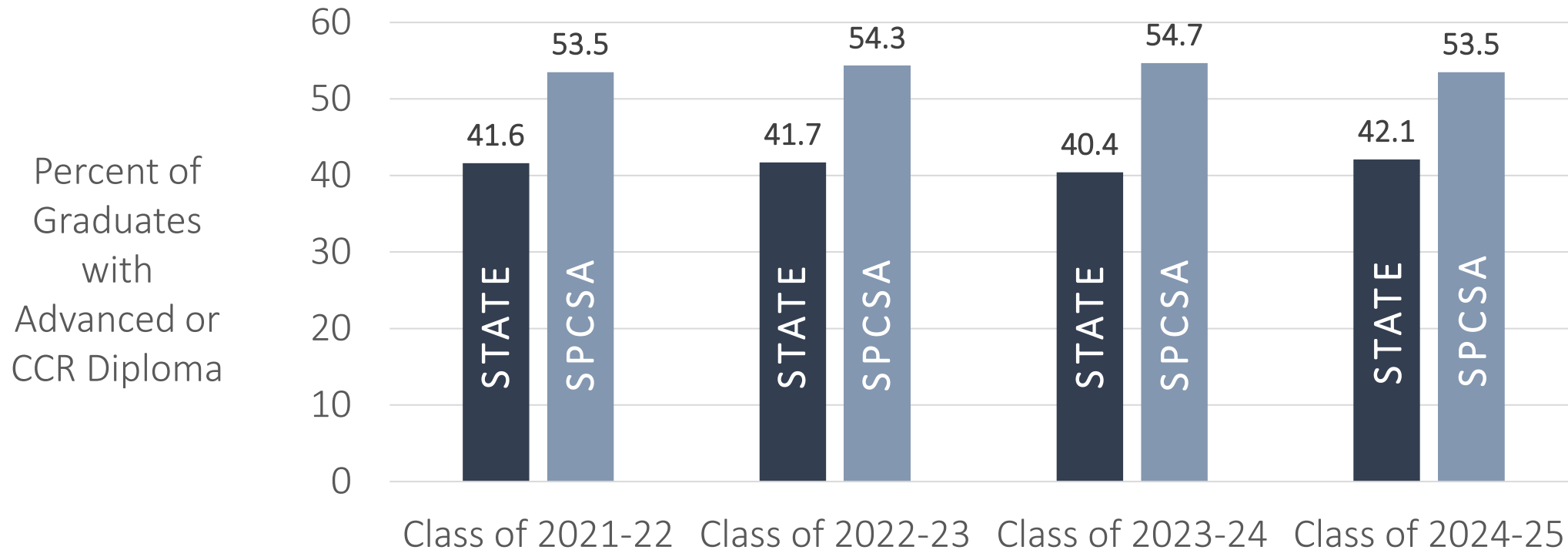


SPCSA vs. State Student Groups: Class of 2024-25 4-Year Graduation Rates



Data retrieved from the [Nevada Accountability Portal](#). “Ever” denotes students were part of that population during their high school career. Up triangles (green) signify a SPCSA rate above the state group and down triangles (red) signify a rate below the state group. “SPCSA Excluding APF” excludes schools rated on the Nevada Alternative Performance Framework (APF), which serve unique populations such as students that are credit deficient.

SPCSA vs. State: Advanced or CCR Diploma Rates



SPCSA Schools: Class of 2024-25 Advanced/CCR Diploma Rates

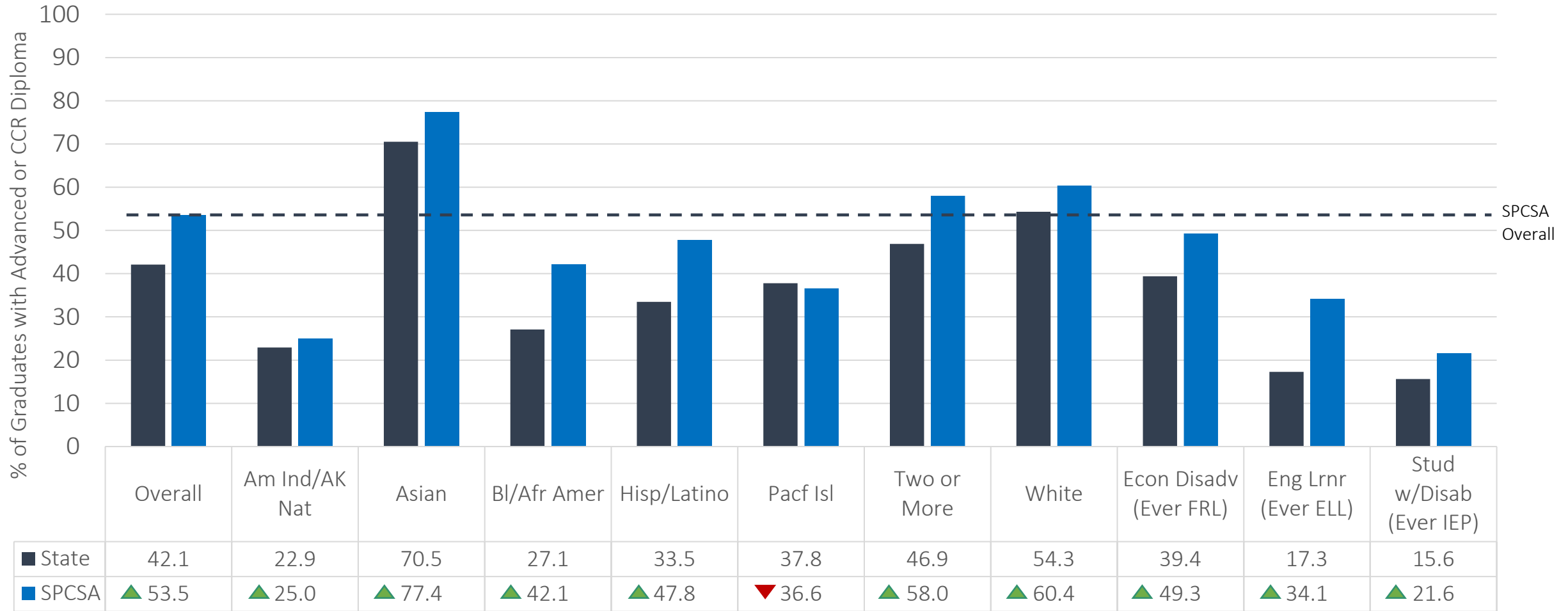


Entity	Percent of Grads Earning Advanced or CCR Diploma
NSHS Sunrise	90.0%
NSHS Dwttn Henderson	88.3%
NSHS Southwest	83.1%
NSHS Henderson	81.3%
NSHS Summerlin	78.1%
Amplus Durango	77.9%
CASLV Sandy Ridge	77.9%
Doral Red Rock	75.3%
NSHS Northwest	74.6%
NSHS North Las Vegas	73.5%
Founders Acad	66.6%
Pinecrest Sloan	66.4%
NSHS Downtown	63.1%
Somerset Sky Pointe	61.8%
Equipo Acad	61.7%
Pinecrest Cadence	53.5%
SPCSA	53.5%
Mater East	53.1%
Oasis Acad	52.1%
Pinecrest Virtual	50.0%
Somerset Losee	44.1%

Entity	Percent of Grads Earning Advanced or CCR Diploma
Leadership Acad	44.0%
STATE	42.1%
SLAM	38.8%
Alpine Acad	36.1%
Nevada Connections Acad	32.6%
Nevada Virtual	30.4%
Democracy Prep	8.4%
Beacon Acad	0.0%
Thrive Point Acad	0.0%

Schools above 53.3% earn the full 5 points in the NSPF Advanced/CCR diploma measure.

SPCSA Student Groups: 2023-24 Advanced or CCR Diploma Rates



SPCSA Graduation Rates Takeaways



Summary

- The 4-year graduation rate for the SPCSA class of 2024-25 was 82.6%, which was below the state rate of 85.4%. Excluding alternative schools, the SPCSA graduation rate is 95.2%.
- All but three SPCSA schools outperformed the state rate, while twenty-two are projected to earn the full 25 points under the 4-year graduation rate measure in next year's NSPF star ratings.
- Only three SPCSA student groups outperformed their state groups. Excluding alternative schools, all SPCSA student groups outperformed their state groups.
- More than half of SPCSA graduates were awarded a more rigorous Advanced or College and Career Ready (CCR) diploma.

Considerations

- Overall SPCSA and student group 4-year graduation rates are influenced by students attending SPCSA schools approved to be additionally rated on the Nevada Alternative Performance Framework (APF), which is reserved for schools that serve a unique population of at-risk students. Many charts and tables herein also show data excluding APF schools.

Class of 2024-25 4-Year Graduation Rates by Population by School



Entity	Overall	Amer Ind/AK Native	Asian	Bl/Afr Amer	Hispanic /Latino	Pacific Islander	Two or More	White	Eng Lrn (ELL)	Econ Disadv (FRL)	Stud w/Disab (IEP)	CTE Concentrator	CTE Completer	Foster	Homeless	Military Connected
STATE	85.4	75.0	94.0	78.4	85.0	86.4	86.2	87.2	78.8	85.1	75.1	>95.0	>95.0	53.9	68.3	86.2
SPCSA	82.6	94.1	>95.0	71.9	78.3	83.3	83.3	91.7	69.8	79.6	72.5	>95.0	>95.0	10.0	49.0	17.3
SPCSA Excluding APF	95.2	94.1	>95.0	94.6	94.7	94.3	>95.0	>95.0	93.9	94.8	92.2	>95.0	>95.0	*	85.7	*
Alpine Acad	100.0	*	N/A	N/A	>95.0	N/A	*	>95.0	*	>95.0	*	N/A	N/A	*	*	*
Amplus Durango	99.2	N/A	>95.0	96.6	>95.0	*	*	>95.0	>95.0	98.7	*	>95.0	>95.0	N/A	*	N/A
Beacon Acad*	25.9	N/A	*	25.4	20.8	57.1	21.7	53.1	20.1	25.6	32.8	7.6	N/A	0.0	22.2	0
CASLV Sandy Ridge	99.4	N/A	>95.0	*	96.4	*	>95.0	>95.0	*	98.6	>95.0	>95.0	>95.0	N/A	*	N/A
Democracy Prep	85.5	N/A	N/A	86.0	82.3	*	*	N/A	*	85.5	*	N/A	N/A	N/A	*	N/A
Doral Red Rock	98.6	N/A	>95.0	>95.0	98.5	*	>95.0	97.8	>95.0	99.0	94.7	>95.0	>95.0	N/A	*	N/A
Equipo Acad	90.2	*	*	N/A	90.0	N/A	N/A	*	89.1	90.2	*	N/A	N/A	N/A	72.7	N/A
Explore Acad	*	N/A	*	N/A	*	N/A	*	*	*	*	*	N/A	N/A	N/A	N/A	N/A
Founders Acad	100.0	N/A	*	*	>95.0	N/A	*	>95.0	*	>95.0	N/A	*	*	N/A	*	N/A
Leadership Acad	89.2	*	N/A	*	*	N/A	*	93.7	N/A	*	*	*	N/A	N/A	N/A	N/A
Mater East	99.5	*	*	>95.0	99.3	*	*	>95.0	98.2	99.5	96.2	99.4	99.4	N/A	>95.0	N/A
Nevada Connections Acad	82.2	*	*	88.0	83.6	*	88.2	80.8	94.7	80.0	78.4	97.9	99.4	*	63.6	*
Nevada Virtual	88.0	*	>95.0	92.3	83.6	*	*	85.5	73.9	88.0	87.7	>95.0	>95.0	*	77.7	*
NSHS Downtown	100.0	N/A	*	*	>95.0	N/A	N/A	*	*	>95.0	N/A	N/A	N/A	N/A	*	N/A
NSHS Dwtm Henderson	100.0	N/A	*	N/A	>95.0	*	*	>95.0	N/A	>95.0	*	N/A	N/A	N/A	N/A	N/A
NSHS Henderson	98.9	N/A	*	*	96.0	N/A	*	>95.0	*	>95.0	*	N/A	N/A	N/A	*	N/A
NSHS Meadowwood	*	N/A	N/A	N/A	*	N/A	*	*	N/A	*	N/A	N/A	N/A	N/A	N/A	N/A
NSHS North Las Vegas	100.0	N/A	*	*	>95.0	N/A	*	*	*	>95.0	N/A	N/A	N/A	N/A	*	N/A
NSHS Northwest	100.0	*	*	*	>95.0	*	>95.0	>95.0	*	>95.0	*	N/A	N/A	N/A	*	N/A
NSHS Southwest	98.8	N/A	95.2	>95.0	>95.0	N/A	*	>95.0	N/A	98.4	N/A	N/A	N/A	N/A	*	N/A
NSHS Summerlin	94.8	N/A	*	*	>95.0	N/A	91.6	>95.0	*	93.7	*	N/A	N/A	N/A	*	N/A
NSHS Sunrise	100.0	N/A	N/A	*	>95.0	N/A	*	*	*	>95.0	*	N/A	N/A	N/A	*	N/A
Oasis Acad	100.0	N/A	*	N/A	*	N/A	*	>95.0	*	*	*	N/A	N/A	N/A	N/A	N/A

Data retrieved from the [Nevada Accountability Portal](#). To protect student privacy, rates associated with populations >0 and <10 students are displayed with an asterisk (*), and rates >0 and <5, or >95, are shown as <5.0 and >95.0, respectively. N/A indicates the population did not exist. "SPCSA Excluding APF Sch." shows SPCSAs rates excluding schools (noted with * in the school name) rated on the Nevada Alternative Performance Framework (APF), which serve unique populations such as students that are credit deficient.

Class of 2024-25 4-Year Graduation Rates by Population by School



Entity	Overall	Amer Ind/AK Native	Asian	Bl/Afr Amer	Hispanic /Latino	Pacific Islander	Two or More	White	Eng Lrn (ELL)	Econ Disadv (FRL)	Stud w/Disab (IEP)	CTE Concentrator	CTE Completer	Foster	Homeless	Military Connected
STATE	85.4	75.0	94.0	78.4	85.0	86.4	86.2	87.2	78.8	85.1	75.1	>95.0	>95.0	53.9	68.3	86.2
SPCSA	82.6	94.1	>95.0	71.9	78.3	83.3	83.3	91.7	69.8	79.6	72.5	>95.0	>95.0	10.0	49.0	17.3
SPCSA Excluding APF	95.2	94.1	>95.0	94.6	94.7	94.3	>95.0	>95.0	93.9	94.8	92.2	>95.0	>95.0	*	85.7	*
Pinecrest Cadence	99.3	N/A	*	>95.0	>95.0	*	>95.0	98.4	*	99.3	>95.0	>95.0	>95.0	N/A	*	N/A
Pinecrest Sloan	99.3	*	96.4	>95.0	>95.0	*	>95.0	>95.0	*	>95.0	>95.0	>95.0	>95.0	N/A	*	N/A
Pinecrest Virtual	93.3	N/A	N/A	N/A	*	*	*	*	N/A	*	*	*	*	N/A	*	N/A
SLAM	99.2	*	*	>95.0	98.7	*	*	>95.0	>95.0	99.2	*	>95.0	>95.0	N/A	*	N/A
Somerset Losee	98.4	*	>95.0	>95.0	97.8	*	95.2	>95.0	95.2	98.4	88.8	>95.0	*	N/A	91.6	N/A
Somerset Sky Pointe	100.0	N/A	*	>95.0	>95.0	*	>95.0	>95.0	*	>95.0	>95.0	>95.0	>95.0	N/A	*	N/A
Southern NV Trades HS	*	N/A	N/A	*	*	N/A	N/A	*	N/A	*	*	N/A	N/A	N/A	*	N/A
Thrive Point Acad*	34.1	N/A	*	23.0	30.7	*	*	39.1	26.0	31.4	25.0	N/A	N/A	N/A	26.9	N/A

Data retrieved from the [Nevada Accountability Portal](#). To protect student privacy, rates associated with populations >0 and <10 students are displayed with an asterisk (*), and rates >0 and <5, or >95, are shown as <5.0 and >95.0, respectively. N/A indicates the population did not exist. "SPCSA Excluding APF Sch." shows SPCSA rates excluding schools (noted with * in the school name) rated on the Nevada Alternative Performance Framework (APF), which serve unique populations such as students that are credit deficient.