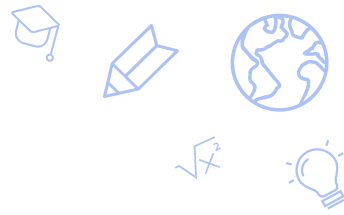


Site Evaluations 2024-2025 School Year

July 25, 2025



Introductions: Site Evaluation Team Members

- Dr. Selcuk Ozdemir Selcuk@spcsa.nv.gov
- Karen Gordon Karengordon@spcsa.nv.gov
- Dr. Denise Shaw Deniseshaw@spcsa.nv.gov
- Gretchen Pfahler Gpfahler@spcsa.nv.gov
- John Pilotin Jpilotin@spcsa.nv.gov
- Deana Wilson Deanawilson@spcsa.nv.gov

OVERVIEW



- Introduction of Site Evaluation Team
- SPCSA Core Value: Excellence Through Improvement
- Review of Site Evaluation Requirements, Purpose, and Focus
- Site Evaluation Overview
- Common Trends from 2024-2025
- Moving Forward
- Questions and Closing Summary

An SPCSA Core Value

Excellence Through Improvement

We establish clear, high expectations, constantly seek growth for ourselves, and foster improvement for our schools.

Reflective practices and a growth mindset



Legal Requirements



Site Evaluation Legal Requirements:

As approved by the Legislature, **NRS-388A.150**, the Authority is to *“provide oversight to the charter schools that it sponsors to ensure that those charter schools maintain high educational and operational standards, preserve autonomy, and safeguard the interests of pupils and the community.”*

Additionally, **NRS 388A.223** outlines the monitoring responsibilities of the SPCSA, including the legal requirement to conduct site evaluations of each campus of a charter school it sponsors during the first, third, and fifth years after entering or renewing a charter contract.

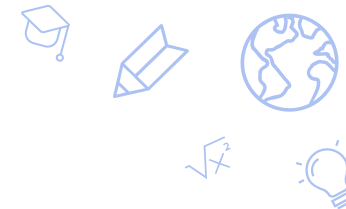
“Such evaluations must include, without limitation, evaluating pupil achievement and school performance at each campus of the charter school and identifying any deficiencies relating to pupil achievement and school performance. The sponsor shall develop a plan with the charter school to correct any such deficiencies” (NRS-388A.223i).



Site Evaluation Purpose



- To exercise oversight, gather formal and anecdotal evidence
- Enhance the SPCSA's monitoring of sponsored schools
- Document strengths of schools, progress toward goals, and opportunities to improve
- Leverage best practices of well-established, highly recognized authorizers
- Inform high-stakes recommendations such as renewals and amendments



Site Evaluation Focus

- Academic performance and delivery of instruction
- Organizational effectiveness of the school and adherence to the approved charter contract with the SPCSA Board and applicable laws and regulations



Site Evaluation Overview



Comprehensive Site Evaluations (Years 1,3,5)

Year 1 - Full Site Evaluation

Year 3 - Full Site Evaluation; Abbreviated for
4-Star and 5-Star Schools

Year 5 - Full Site Evaluation

Targeted Site Evaluations (Years 2,4,6)

Previous Deficiency or Strong
Recommendation

1-or 2-Star Schools

Operating Under an Academic or
Organizational Notice

Site Evaluations



Site evaluations offer an analysis of evidence collected during the school evaluation.



Site evaluation reports are published on the SPCSA website.

[\(2024-2025 SPCSA Site Evaluations\)](#)



Site Evaluation Process



Pre-Site Evaluation Process

- Communicate with the school about upcoming site evaluation
- Conduct pre-site meetings with schools and review the schedule for the day
- Research school data and prepare focus group questions
- Review of the school presentation that has been submitted to Epicenter
- View recent governing board school meetings

School

- Attend virtual pre-site meeting
- Prepare and coordinate focus groups
- Prepare and deliver leadership presentation



Site Evaluation Process



Day of Site Evaluation

- Site evaluations one full day in most cases, with at least two SPCSA site evaluation team members
- During the leadership focus group, reiterate the purpose of a site evaluation
- Facilitate focus groups and record responses
- Observe classrooms
- Conduct routine checks
- Identify strengths, challenges, and recommendations and debrief with the SE team
- Identify and communicate compliance concerns
- Debrief with school leaders on findings
- Discuss previously issued notices

Post -Site Evaluation Process

- Disaggregate information, summarize focus group responses, and classroom observational information
- Write a summary of strengths, challenges and recommendations to produce the site evaluation report
- Email draft and final site evaluation reports
- Place the final report on the SPCSA webpage
- Attend the school's governing board meeting upon request
- Follow through and monitor all needed improvement plans with the school leader if a strong recommendation or deficiency was issued



2024-2025 First Semester Schools

September

Founders Academy
 Leadership Academy of NV
 Mater Academy LV
 Mater Academy East
 Mater Academy Mountain
 Vista

October

Amplus Durango
 Amplus Rainbow
 **Battle Born Academy
 **Legacy North Valley
 **Legacy Cadence
 Legacy Southwest
 Pinecrest Academy Northern NV

November

Somerset North LV
 Somerset Losee
 Somerset Aliante
 Somerset Stephanie
 Somerset Sky Pointe
 Somerset Lone Mountain
 Somerset Skye Canyon

December

NSHS Summerlin
 NSHS North LV
 NSHS Downtown
 NSHS Sunrise
 NSHS SW HS
 NSHS Henderson HS
 NSHS Henderson (DT)
 NSHS Meadowwood
 NHSH NW HS
 Honors Academy of
 Literature

*New Charter School

**Targeted visit



2024-2025 Second Semester Schools

<u>January</u>	<u>February</u>	<u>March</u>	<u>April</u>
<p>**Discovery Sandhill</p> <p>*Vegas Vista</p> <p>**Nevada Rise</p> <p>*Thrive Point Academy of NV</p> <p>**Equipo</p> <p>**Nevada Prep</p> <p>**Quest</p> <p>**Nevada Virtual Charter School</p> <p>Nevada Connections Academy</p>	<p>**PilotED</p> <p>**Sage Collegiate</p> <p>**Sports Leadership & Management Academy (SLAM)</p> <p>Strong Start Academy</p> <p>**Young Women's Leadership Academy</p> <p>Beacon Academy East</p> <p>Beacon Academy West</p> <p>*Explore</p> <p>Futuro</p> <p>**Democracy Prep NV</p>	<p>Pinecrest Sloan Canyon</p> <p>Pinecrest Cadence</p> <p>Pinecrest Virtual</p> <p>Pinecrest St. Rose</p> <p>Pinecrest Horizon</p> <p>Pinecrest Inspirada</p> <p>Pinecrest Springs</p> <p>**Coral Nellis AFB</p>	<p>**Civica</p> <p>**Mater Northern NV</p> <p>**Silver Sands Montessori</p> <p>**Freedom Classical</p> <p>**Learning Bridge</p> <p>**Signature Prep</p> <p>**Imagine Schools at Mountain View</p>
<p>*New Charter School</p> <p>**Targeted visit</p>			



Data Summary

Total Site Evaluations for 24-25 School Year	63 Schools
--	------------

Elementary School	Middle School	High School	Total Classrooms
908	358	211	1477

New Schools	Targeted Site Evaluations
2	7

Schools Receiving Strong Recommendations	Schools Receiving Deficiencies
9	11

Each site, on average, requires 50-55 staff hours	Each site evaluation is conducted by a team of at least two SPCSA staff members
---	---

25-26 School Year: Projected ~55 Schools
The number of Site Evaluations is subject to change depending on NSPF results and relevant data findings

Site Evaluation Experience



The SPCSA aims to provide a high-quality site evaluation experience by:

- Utilizing effective communication
- Providing meaningful feedback
- Building strong relationships with stakeholders

The SPCSA site evaluation team strives to meet each of these expectations by weaving the three key elements through each step of the site evaluation process: the pre-site evaluation, the site evaluation day at the school, and the post-site evaluation.



Sample Schedules



Sample Schedule		
Time	Duration	Action
7:45-8:10	25 min.	SPCSA staff arrive and settle into room 300. Wi-Fi connectivity, a map of the school, and a list of substitutes for the day are provided. Check the health office and applicable permits.
8:10-9:10	60 min.	Leadership Focus Group-overview and presentation
9:15-10:15	60 min.	Morning classroom observations
10:20-11:05	45 min.	Student Focus Group
11:10-11:55	45 min.	Family Focus Group
12:00-12:50	50 min.	SPCSA Evaluators Lunch/Debrief
12:50-2:30	100 min.	Afternoon classroom observations
2:30-3:00	30 min.	Site Evaluation Team Debrief/ Additional Observations
3:00-3:45	45 min.	Faculty Focus Group
3:45-4:15	30 min.	Site Evaluation Team Debrief
4:15-4:45	30 min.	Debrief with the administration
4:45-5:00	15 min.	SPCSA staff depart

Sample Schedule		
Time	Duration	Action
7:30-7:45	15 min.	SPCSA staff arrive and settle into office conference room. Wi-Fi connectivity, a map of the school, and a list of substitutes for the day are provided.
7:45-8:30	45 min.	Faculty Focus Group
8:30-10:30	120 min.	Morning classroom observations
10:35-11:35	60 min.	Leadership Focus Group-overview and presentation.
11:45-12:30	45 min.	Board Focus Group *virtual*
12:30-1:00	30 min.	SPCSA Evaluators Lunch/Debrief
1:00-1:45	45 min.	Afternoon classroom observations, check health office and applicable permits
1:45-2:30	45 min.	Student Focus Group
2:35-3:20	45 min.	Family Focus Group
3:20-4:00	40 min.	Site Evaluation Team Debrief
4:00-4:30	30 min.	Debrief with the administration
4:30-4:45	15 min.	SPCSA to depart

Responses from school leaders

- “Thank you for bringing your team to our campus and for the thorough feedback.” Somerset Skye Canyon
- “I just read the report in its entirety. It looks great. Thank you for your insightful feedback and reflection.” Vegas Vista Academy 
- “Thank you so much for the feedback and providing engaging our team in a positive and productive learning experience during this process.” ThrivePoint Academy of Nevada
- “We thoroughly enjoyed reading through the site evaluation reports, and we appreciate the time taken by the SPCSA team to observe and evaluate our schools.” Beacon Academy of Nevada
- “Thanks for the thorough and well-written report. We find no factual inaccuracies and feel that the report was well-balanced and fair. Your recommendations will serve as fodder for discussion, debate, and professional development for the next several months.” Freedom Classical Academy
- “I just wanted to thank you and your team for your participation in yesterday's Board Meeting and for all of the support, kind words, encouragement, and belief that you all have in us at YWLA. It means so much that we are seen and recognized for all the hard work and effort that we are doing. This job was not easy, but having the support of SPCSA and Academica has made it that less challenging and strenuous.” Young Women’s Leadership Academy



Responses from school leaders

- “Thank you for the thoughtful and thorough review of our school. I feel like you captured the essence of Horizon and gave us great feedback to continue our improvement and refinement efforts. It was a pleasure to have you at our campus and to share our school with you! There is a lot of great information and feedback in here that can guide us in our next steps. I really appreciate the time and care you took for our school.” Pinecrest Academy Horizon
- “We appreciate the opportunity to receive feedback and look forward to working to improve. We constantly strive to provide the best education for our stakeholders and believe that these visits allow us to celebrate our successes while evaluating growth opportunities.” Pinecrest Academy Cadence
- Thanks so much for passing this along and the kind words shared about our school. I don’t need to include feedback or comments as they all seem very right on with what we discussed and what we are noticing as a team here as well.” Mater Academy Northern Nevada
- “We appreciate the feedback and will use this information to make improvements.” Mater Academy Bonanza



Common Trends in Schools 2024-2025

Strengths

- Positive relationships between students and staff
- Intentional focus on data to drive instruction from leaders and teachers
- Strong leadership teams with well-defined goals and vision
- Overall positive middle school performances on NSPF
- Increased graduation rates and participation in College and Career Readiness
- Implementing Tier 1, 2, and 3 instruction consistently; more evidence of small group instruction

Areas for Improvement

- The challenge of recruiting and retaining staff
- Reducing chronic absenteeism rates
- Improving star ratings on NSPF from one or two-star
- Building instructional capacity in staff through targeted observations and professional development
- Refining school-wide systems and structures of tiered support academically and behaviorally
- Increasing challenges of supporting students' social-emotional needs
- Timely submission of compliance-related items and timely responses to site evaluation personnel
- Increasing enrollment diversity to be more representative of the SPCSA (FRL, IEP, ELL)
- Increasing science proficiency on the NSPF

Moving Forward



- SPCSA's core value, 'Excellence through improvement,' serves as a pillar for the site evaluation team, and we are excited to enhance our practice of conducting quality site evaluations this coming school year.
- The site evaluation team reviews feedback from the anecdotal notes, data collected from school leadership teams, and feedback received from leaders annually to ensure a growth mindset.
- Looking forward to the 2025-2026 school year.



Summary

- Review of site evaluation requirements, purpose, and focus
- Site evaluation overview
- Common trends from 2024-2025
- 2024-2025 list of schools
- Feedback from school leaders





Thank you!

charterschools.nv.gov