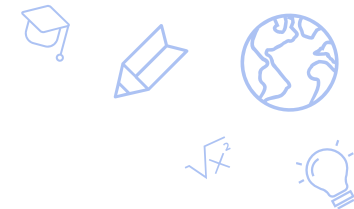




State of the SPCSA

January 24, 2025





Overview

- Overview of the SPCSA
- Final Overview of the 2019-2024 Strategic Plan
- Progress in Meeting our 2019-2024 Strategic Goals

SPCSA Overview





Creation and Purpose

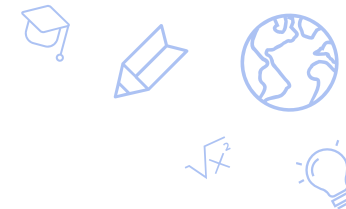
The purpose of the State Public Charter School Authority is to:

“ **Authorize charter schools of high-quality** throughout this State with the goal of expanding the opportunities for pupils in this State, including, without limitation, pupils who are at risk.

Provide oversight to the charter schools that it sponsors to ensure that those charter schools maintain high educational and operational standards, preserve autonomy and safeguard the interests of pupils and the community.

Serve as a model of the best practices in sponsoring charter schools and foster a climate in this State in which all high-quality charter schools, regardless of sponsor, can flourish. ”

NRS 388A.150



About the State Public Charter School Authority

10

Voting member board appointed by the Governor, Senate Majority Leader, Speaker of the Assembly, State Board of Education, and Charter School Association of Nevada. A charter school student is the 10th board member and is nonvoting.

35

Full time employees who conduct oversight of schools and execute Local Education Agency responsibilities (ex. monitoring, technical assistance, managing grants).

3

Offices, one located in Carson City, Reno and Las Vegas.

\$48.7M

Estimated pass-through of annual federal and state grants to schools for FY 2025 (excluding emergency funding)

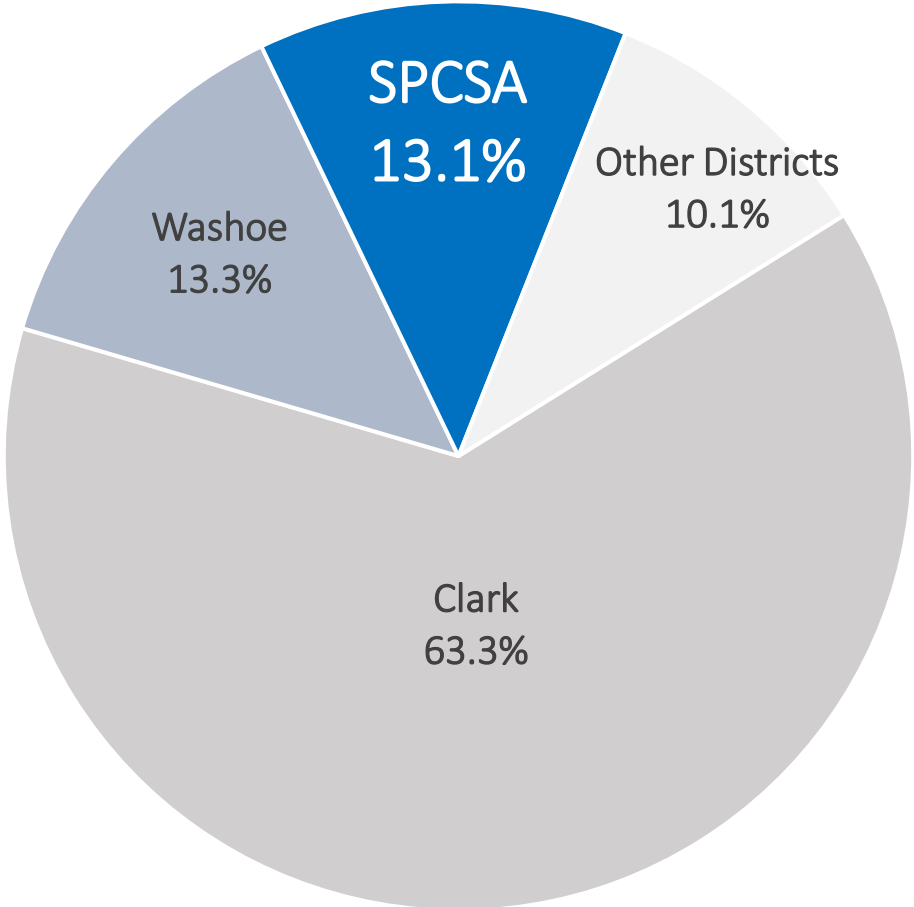
\$15M

Estimated pass-through of available federal emergency funds (does not include prior Covid relief grants that have ended)

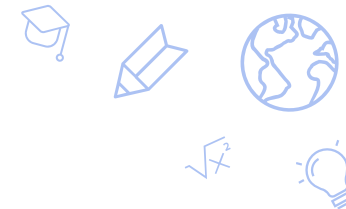
Overview of Schools and Students Served



There are 80 charter school campuses sponsored by the SPCSA located across five counties: Churchill, Clark, Elko, Washoe, and White Pine. Of the school campuses sponsored by the SPCSA, about 85% are located in Clark County.



Entity	# Enrolled	% of State
STATE	482908	-
Clark	306038	63.3%
Washoe	64244	13.3%
SPCSA	63609	13.1%
Elko	9595	1.9%
Lyon	9205	1.9%
Carson City	7459	1.5%
Nye	5787	1.1%
Douglas	4943	1.0%
Churchill	3284	0.6%
Humboldt	3257	0.6%
White Pine	1276	0.2%
Lander	1059	0.2%
Lincoln	958	0.1%
Pershing	666	0.1%
Mineral	542	0.1%
Storey	392	<0.1%
Eureka	310	<0.1%
University	169	<0.1%
Esmeralda	75	<0.1%
Correctional	40	<0.1%



New Charter School Campuses

- The SPCSA has opened 22* New Charter School Campuses in the last five years
 - 7 New Charter School Campuses in the 2020-21 School Year
 - 3 New Charter School Campuses in the 2021-22 School Year*
 - 8 New Charter School Campuses in the 2022-23 School Year
 - 3 New Charter School Campuses in the 2023-24 School Year
 - 2 New Charter School Campuses in the 2024-25 School Year

- 79% of the New Charter School Campuses are currently Title I Schools

SPCSA-Sponsored Schools

By offering a variety of school models, the SPCSA enables Nevada families to choose schools that best align with the needs and interests of their children.

- Arts Integration
- Montessori
- Bi-lingual education
- Career and Technical Education
- Alternative High School Serving Under-Credited Students
- Schools aimed to meet the needs of young women
- Dual Enrollment High Schools
- Online or Blended Learning
- Classical Education
- STEM/STEAM
- Project-based learning



Strategic Plan

2019 through 2024





Vision

Equitable access to diverse, innovative, and high-quality public schools for every Nevada student.

Mission

The SPCSA sponsors, supports, and oversees dynamic and responsive public charter schools that prepare all students for academic, social, and economic success.



STUDENT FOCUSED

We put what is best for students at the center of our work and honor the critical role that families play in student success.



LEADERSHIP

We earn the public's trust by holding our agency to the highest standards and investing in our growth and development.



EXCELLENCE THROUGH IMPROVEMENT

We establish clear, high expectations and constantly seek growth for ourselves and foster improvement for our schools.



EQUITY & DIVERSITY

We are committed to ensuring equitable access for students from all backgrounds and value the voices of all members of our community.



TRANSPARENCY

We promote transparent and open communication and make school performance data accessible to all stakeholders.



ACCOUNTABLE AUTONOMY

We provide our charter schools with the autonomy to innovate in the best interests of students while holding them accountable for academic results, financial performance, and legal compliance, so that students, families, and taxpayers can be confident in the quality of the schools we sponsor.

Five-Year Goals

- ✓ Provide families with access to high quality schools
- ✓ Ensure that every SPCSA student succeeds – including those from historically underserved student groups
- ✓ Increase the diversity of students served by SPCSA schools

Strategies



Proactive Oversight



Strategic Growth



Expanded Support



Recognize Progress



Goal 1

Provide families with access to high quality schools

The SPCSA aims for all sponsored schools to meet academic, organizational and financial performance standards.



Despite the impact of COVID-19, SPCSA-sponsored schools have continued to make academic gains



Nevada School Star Ratings (2023-24 School Year)



73%
of SPCSA schools earning
a 3-Star or better on the
NSPF (down 7%)



52%
of SPCSA are rated as 4- or
5-star schools (down 8%)

Graduation Rates (Class of 2024)



83.3%
4-year graduation rate
(down 0.5% over last year)

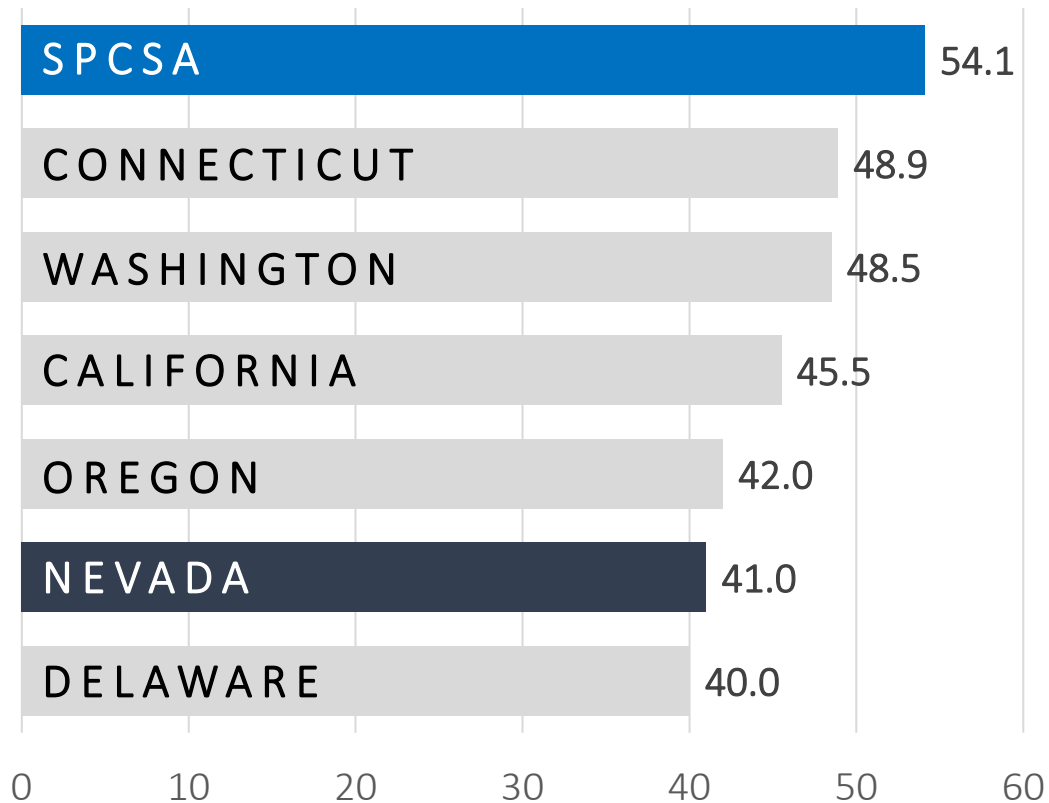
26 of 27 high schools
exceeded the statewide graduation rate



SPCSA-Sponsored Schools Outperform Other States in SBAC Proficiency

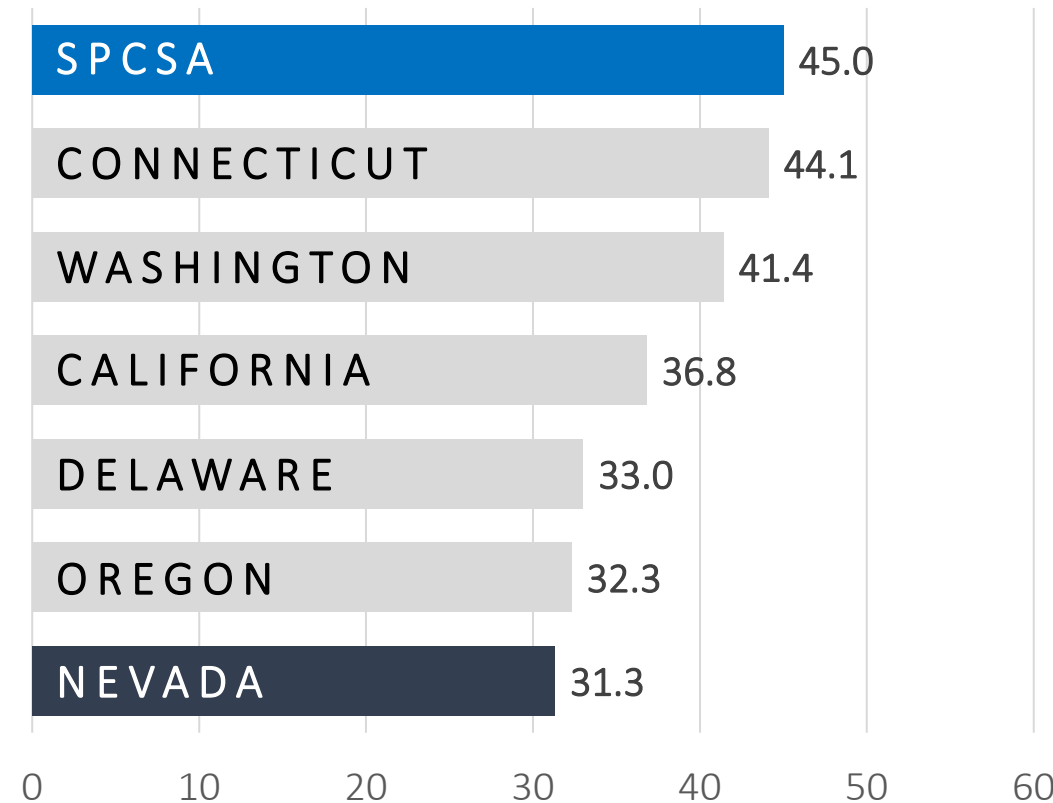


ELA Proficiency



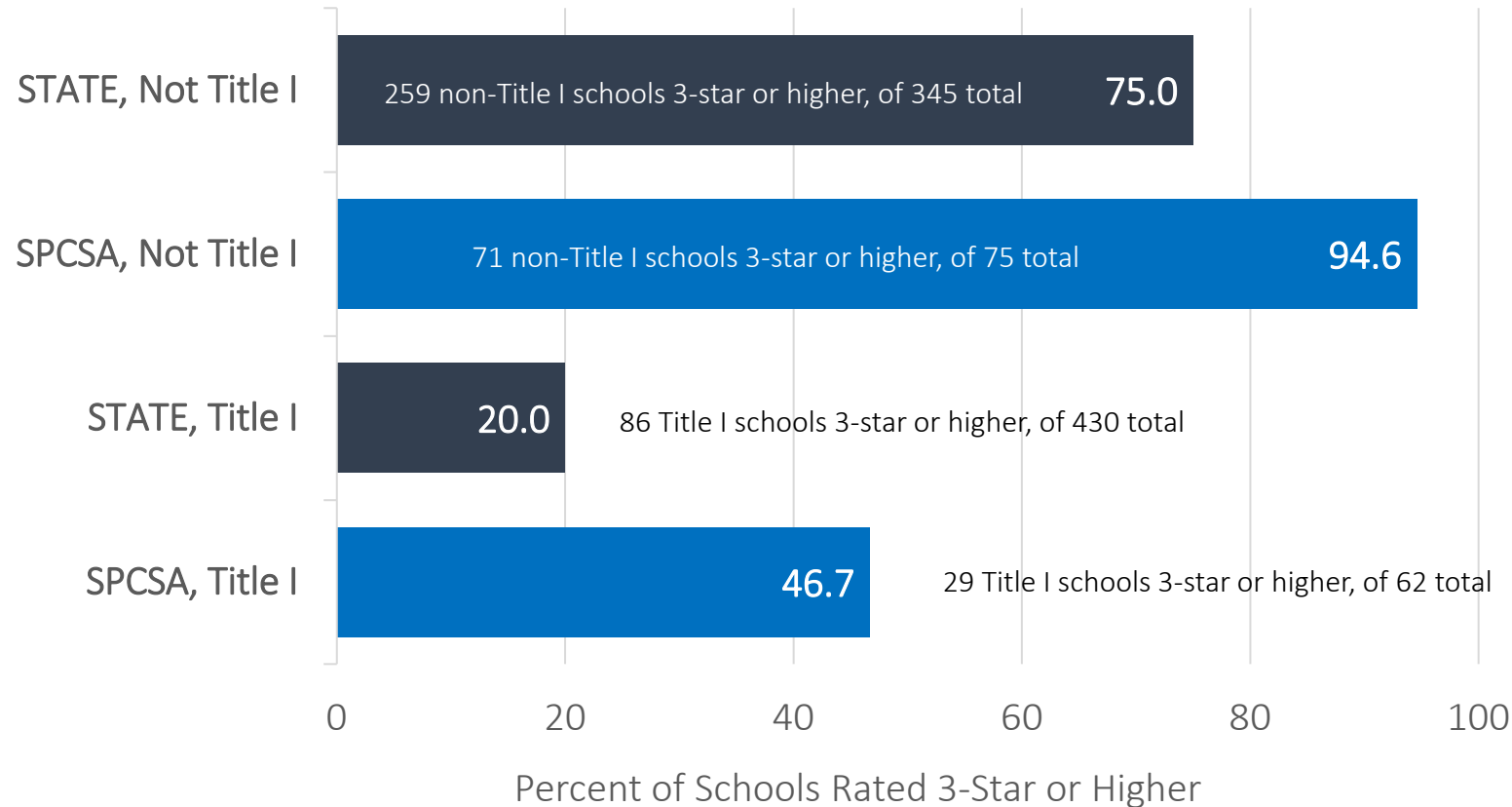
Note SPCSA high of 60.0% in 2018-19.

Math Proficiency



Note SPCSA high of 48.4% in 2018-19.

SPCSA-Sponsored Schools Outperform the State, but Title I schools are Less Likely to Earn 3 Stars or Better

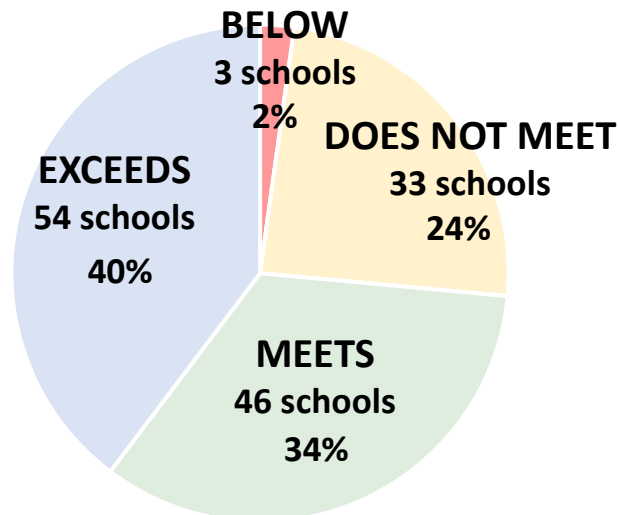




Academic Performance Framework

- The SPCSA adopted an Academic Performance Framework (APF) in 2019 that is based on:
 - School Index Score (NSPF);
 - Performance comparisons (NSPF index score) to the local school district and nearby school; and
 - Enrollment diversity compared to the local school district.

2023-24 SPCSA Academic Performance Framework Ratings



The data shown above exclude schools that did not receive a rating. The requirements to receive an SPCSA Academic Performance Framework score and rating are found [here](#).

Site Evaluations

- The SPCSA conducts site evaluations at each school campus, at minimum, in the first, third and fifth years of the charter contract.
- Each site evaluation involves document submissions, classroom observations, and focus groups.
- For the 2024-25 school year, the SPCSA has 62 site evaluations scheduled, with 29 complete as of January 1, 2025.



Organizational Performance Framework

- The SPCSA approved an Organizational Performance Framework (OPF) in 2019 with five major categories:
 - Education Program
 - Financial Management and Oversight
 - Governance and Reporting
 - Students and Employees
 - School Environment
- The Organizational Framework takes into account over 40 annual compliance requirements and is focused on answering the question: *Is the organization effective and well run?*
- For the 2023-2024 school year, 88% of charter holders met standards on the Organizational Performance Framework.

Financial Performance Framework

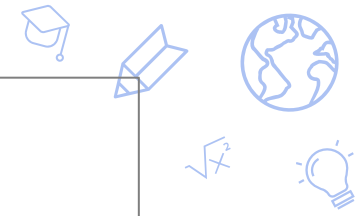
- The SPCSA approved a Financial Performance Framework (FPF) in 2019 with four near-term measures and four sustainability measures.
- The Financial Framework is focused on answering the question: *Is the school financially viable?*
- For the 2022-2023 school year, 68.2% of charter holders met standards on the Financial Performance Framework. Ratings for the 2023-24 school year will be presented at a future board meeting.

Goal 2

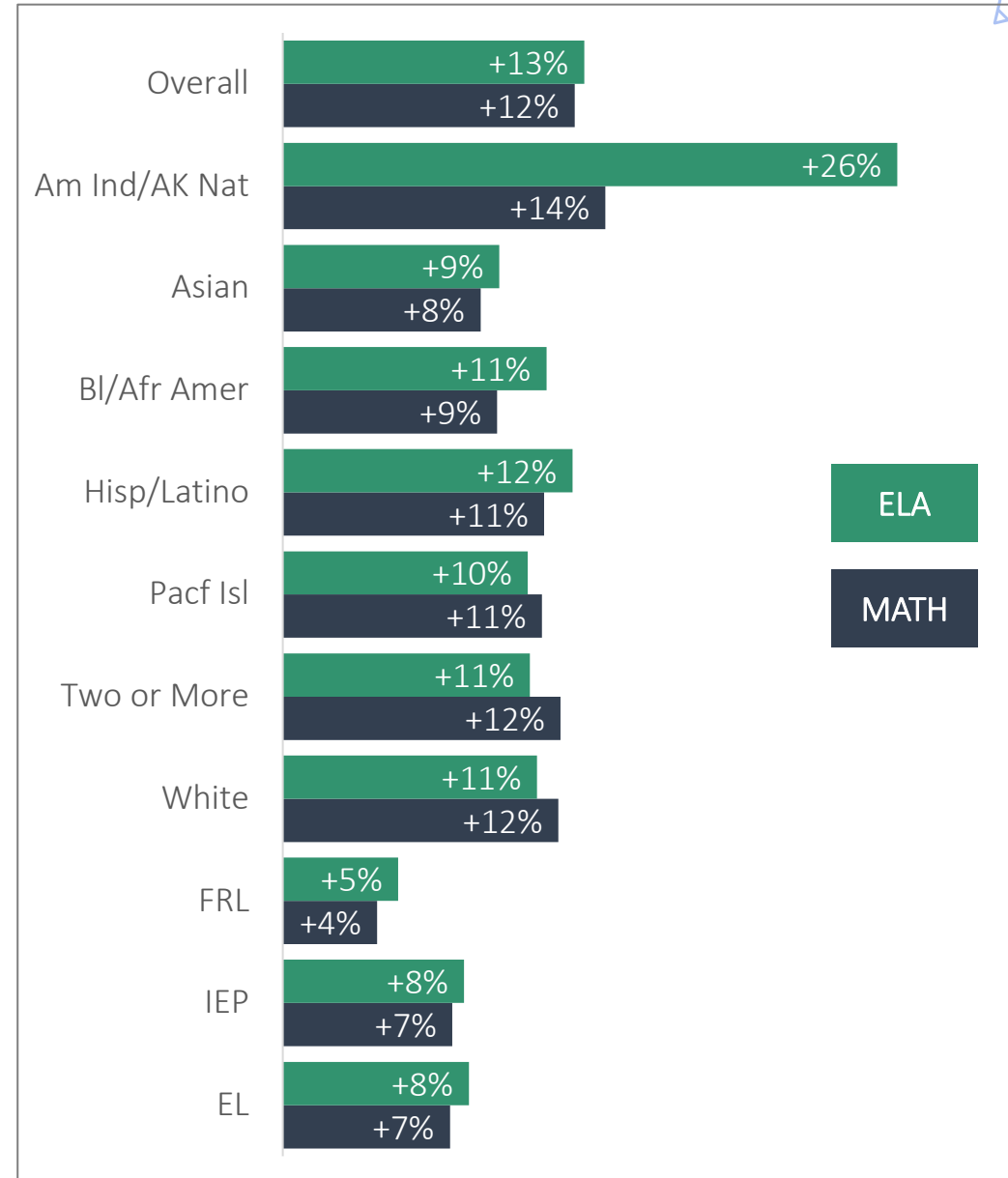
Ensure that every SPCSA student succeeds – including those from historically underserved student groups

The SPCSA aims for all sponsored schools to demonstrate strong academic growth, high levels of proficiency, and on-time graduation across all student groups, including historically underserved student groups.



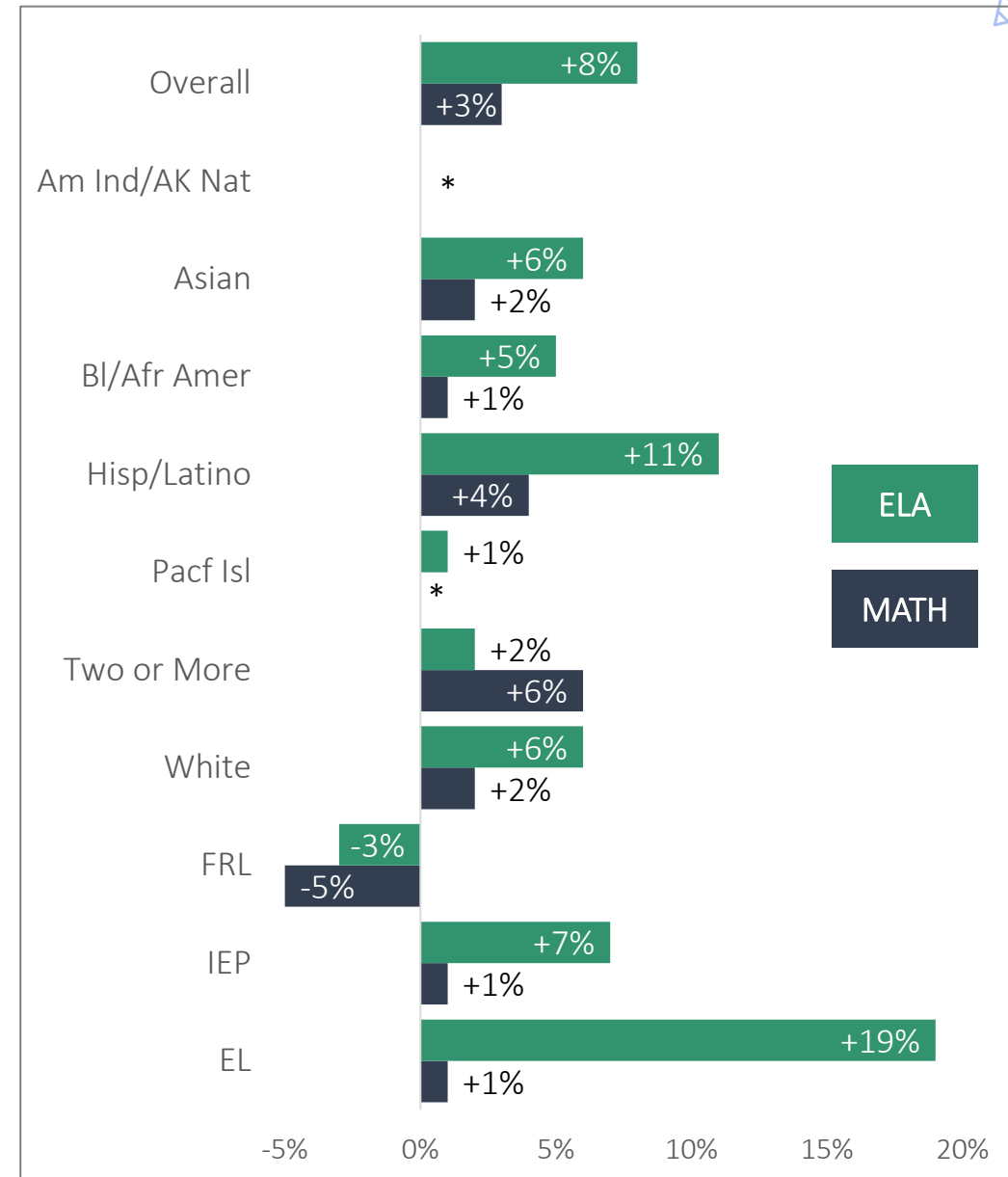


All SPCSA Student Groups Outperformed their State Peers in 3rd-8th Grade Math and ELA

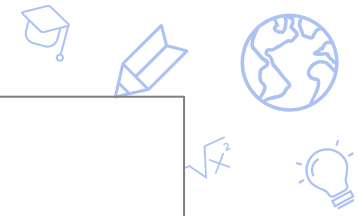


Data retrieved from the [Nevada Accountability Portal](#). Data shown are percentage point differences in proficiency between each SPCSA and corresponding state student group, for the 2023-24 Smarter Balanced assessments.

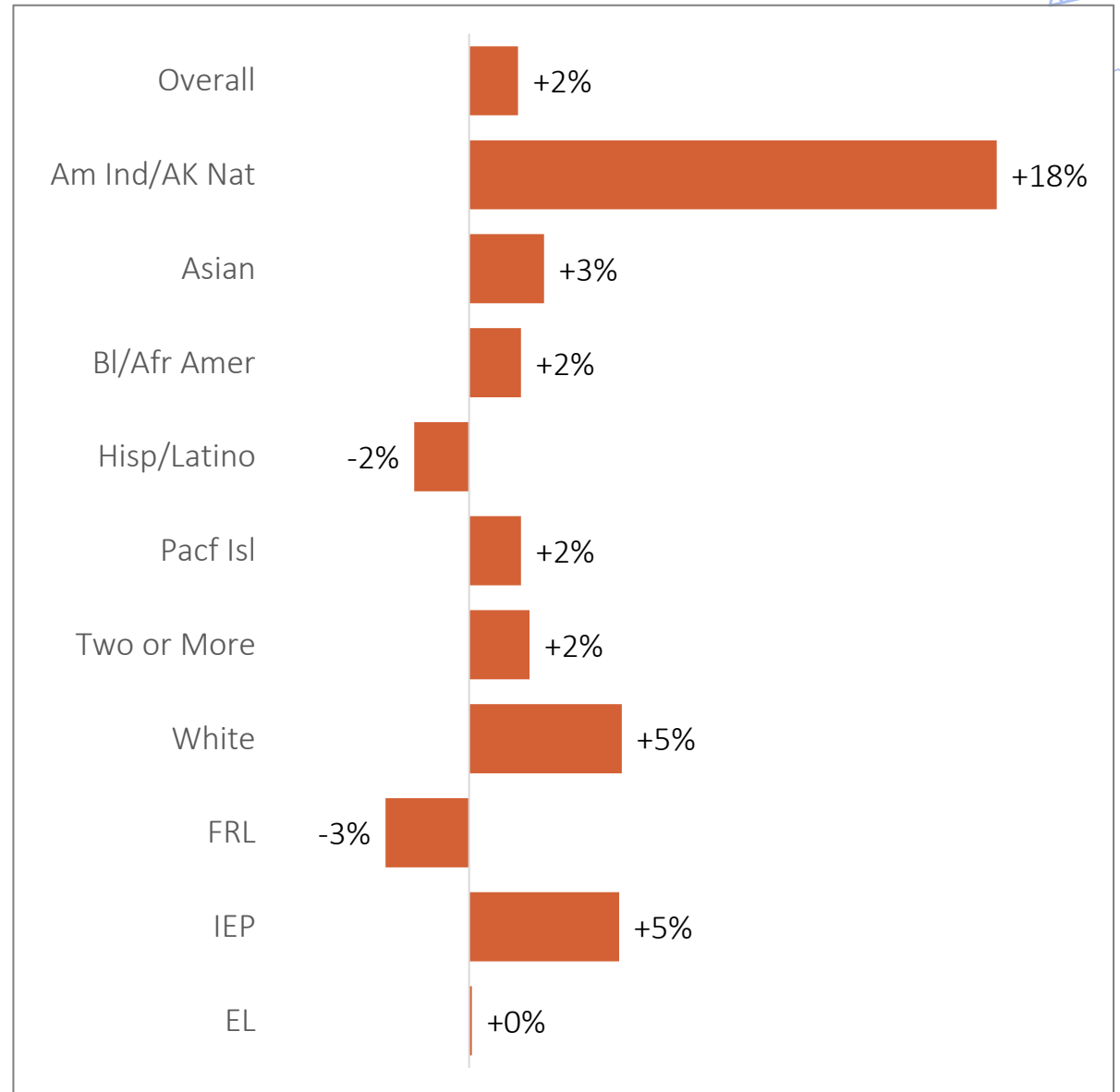
Most SPCSA Student Groups Outperformed their State Peers in 11th Grade Math and ELA



Data retrieved from the [Nevada Accountability Portal](#). Data shown are percentage point differences in proficiency between each SPCSA and corresponding state student group, for the 2023-24 ACT assessment. * Indicates data suppressed for privacy due to small population size.



Most SPCSA student groups had graduation rates that exceeded the respective statewide student group

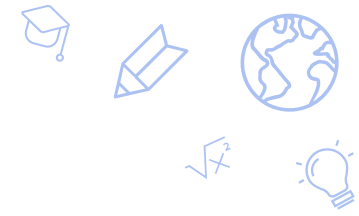


Data retrieved from the [Nevada Accountability Portal](#). Data shown are percentage point differences in 4-year graduation rate between each SPCSA and corresponding state student group, for the class of 2023-24.

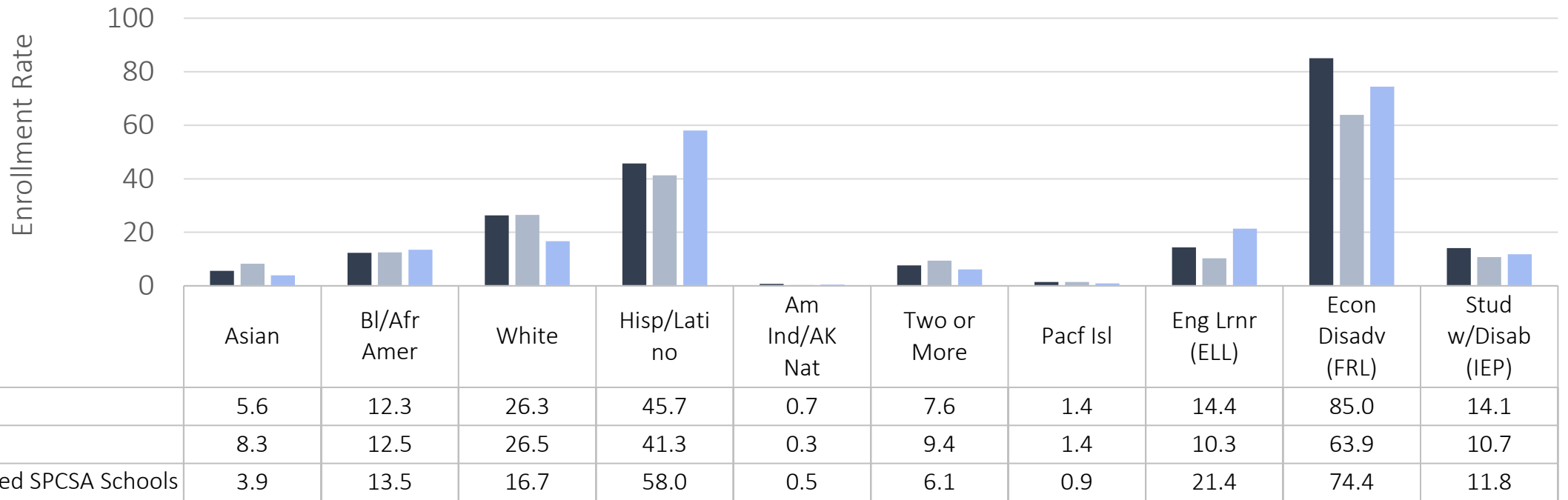
Increase the diversity of students served by SPCSA schools

The SPCSA aims for sponsored schools to serve a population of students that is representative of the State with regard to race/ethnicity and additional student groups.





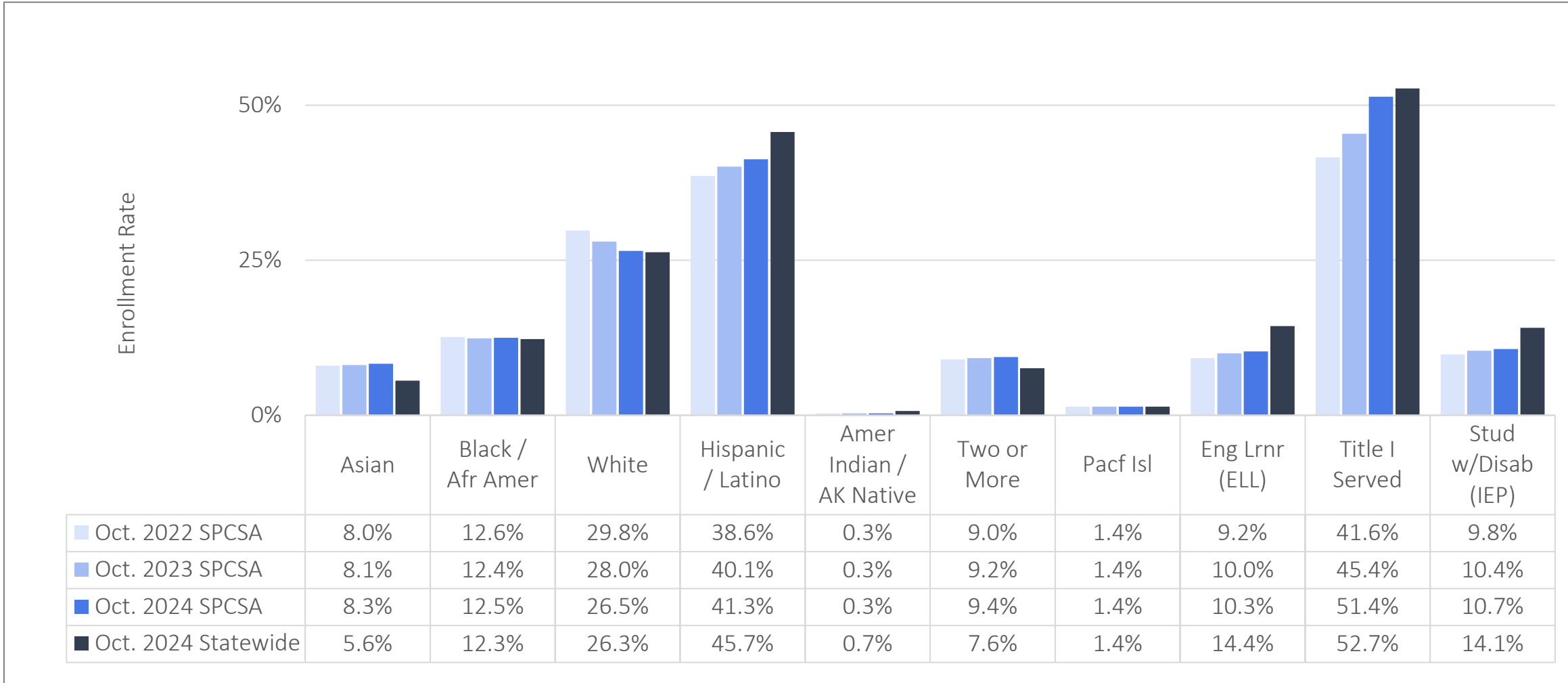
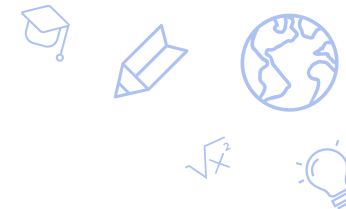
New SPCSA Schools that Opened in Recent Years are More Reflective of State Enrollment Rates



Schools included in “Recently Opened SPCSA Schools” are those approved post implementation of the SPCSA Needs Assessment:

- Opened 2020-21 SY: Explore Academy, Mater Academy East, Nevada State High School Downtown Henderson, and Pinecrest Academy Northern Nevada.
- Opened 2021-22 SY: Beacon Academy (Sahara campus – but note data are included for the entire Beacon charter as data cannot be easily split out) and CIVICA.
- Opened 2022-23 SY: Battle Born Academy, Coral Academy of Science Las Vegas Cadence, Nevada State High School North Las Vegas, pilotED Cactus Park, Pinecrest Academy Virtual, Sage Collegiate, Strong Start Academy, and Young Women’s Leadership Academy.
- Opened 2023-24 SY: Pinecrest Academy Springs and Southern NV Trades HS.
- Opened 2024-25 SY: Thrive Point Academy and Vegas Vista Academy.

The SPCSA's Demographics Show Steady Progress Towards Alignment with the State



Enrollment rates are from the Nevada Department of Education (NDE) October validation day of the respective year.

Appendix



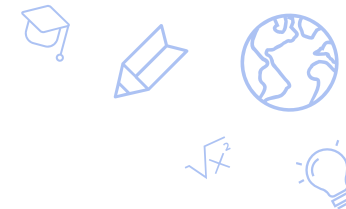
New Charter Schools



New Schools and Campuses Opened Since 2020-2021 School Year

School Name	Opening Year	Location	Full Scale Grade Levels	Full Scale Enrollment	Title I
Amplus Academy – Rainbow	2020-21	Las Vegas	K-5	640	Yes
Explore Academy	2020-21	North Las Vegas	6-12	570	Yes
Girls Empowerment Middle School (GEMS)*	2020-21	Las Vegas	6-8	215	N/A
Mater Academy of Nevada – East	2020-21	Las Vegas	PK-12	2,209	Yes
Nevada State High School – Downtown Henderson	2020-21	Henderson	11-12	190	No
Nevada State High School – Northwest	2020-21	Las Vegas	11-12	166	No
Pinecrest Academy of Northern Nevada	2020-21	Sparks	K-8	988	No
Beacon Academy of Nevada- East	2021-22	Las Vegas	9-12	350	Yes
CIVICA Nevada	2021-22	North Las Vegas	K-12	1650	Yes
TEACH Las Vegas**	2021-22	Las Vegas	K-12	975	Yes

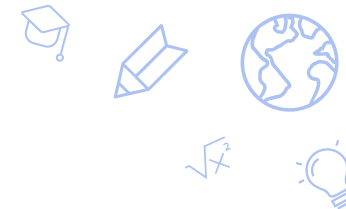
*School closed at the end of the 2022-23 school year.
 **School closed at the end of the 2023-24 school year.



New Schools and Campuses Opened Since 2020-2021 School Year (continued)

School Name	Opening Year	Location	Full Scale Grade Levels	Full Scale Enrollment	Title I
Battle Born Academy	2022-23	Las Vegas	K-8	540	Yes
Coral Academy of Science – Cadence	2022-23	Henderson	K-12	1,850	Yes
Nevada State High School – North Las Vegas	2022-23	North Las Vegas	11-12	170	Yes
Pinecrest Academy – Virtual	2022-23	Henderson (Virtual)	6-12	170	No
PilotED Cactus Park	2022-23	Las Vegas	K-5	486	Yes
Sage Collegiate	2022-23	Las Vegas	K-8	588	Yes
Strong Start Academy	2022-23	Las Vegas	K-5	360	Yes
Young Women’s Leadership Academy	2022-23	Las Vegas	6-12	600	Yes
Eagle Charter School*	2023-24	Las Vegas	K-8	918	Yes
Pinecrest Academy – Springs	2023-24	Las Vegas	K-12	1200	Yes
Southern Nevada Trades High School	2023-24	Las Vegas	9-12	550	Yes
Thrive Point Academy	2024-25	Las Vegas	9-12	450	
Vegas Vista	2024-25	Las Vegas	K-8	600	Yes

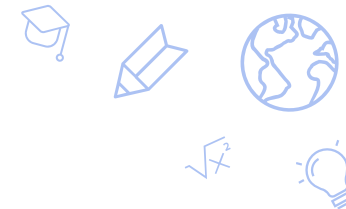
* School closed at the end of the 2023-24 school year.



New Schools and Campuses Scheduled to Open in the 2025-2026 School Year

School Name	Opening Year	Location	Full Scale Grade Levels	Full Scale Enrollment
Do and Be Arts Academy of Excellence*	2025-26	Las Vegas	K-8	630
Pioneer Technical Arts Academy*	2025-26	Las Vegas	K-12	1478
Rooted School Las Vegas*	2025-26	Las Vegas	9-12	360
Nevada Classical Academy Elko	2025-26	Elko	K-8	357
Western Youth Leadership, Engagement & Empowerment School (WYLEES)	2025-26	Las Vegas	6-8	501

*School deferred opening.



Clark County School District Schools that will be in our portfolio in the 2025-2026 School Year

School Name	Opening Year	Location	Full Scale Grade Levels	Full Scale Enrollment
Delta Academy	2025-26	Las Vegas	6-12	1460
Explore Knowledge Academy	2025-26	Las Vegas	K-12	640
Future Edge	2025-26	Las Vegas	K-8	325
Innovations Charter School	2025-26	Las Vegas	K-12	665
Odyssey Charter School	2025-26	Las Vegas	K-12	2380
Rainbow Dreams Early Learning Academy	2025-26	Las Vegas	K	80*

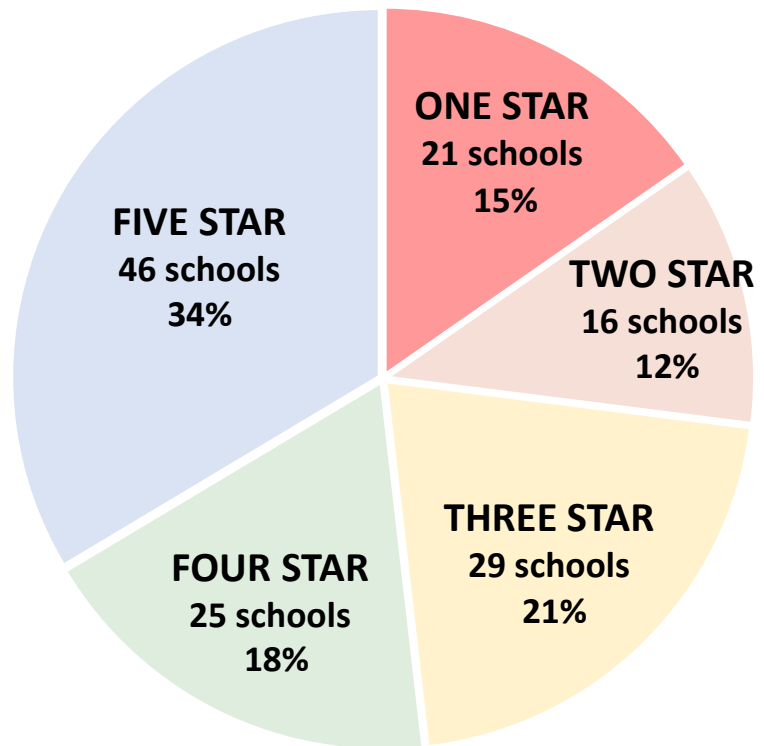
*School also serves 3-year-old and 4-year-old pre-k programs

Star Ratings

SPCSA vs. State: Nevada School Performance Framework (NSPF) Star Rating Overview

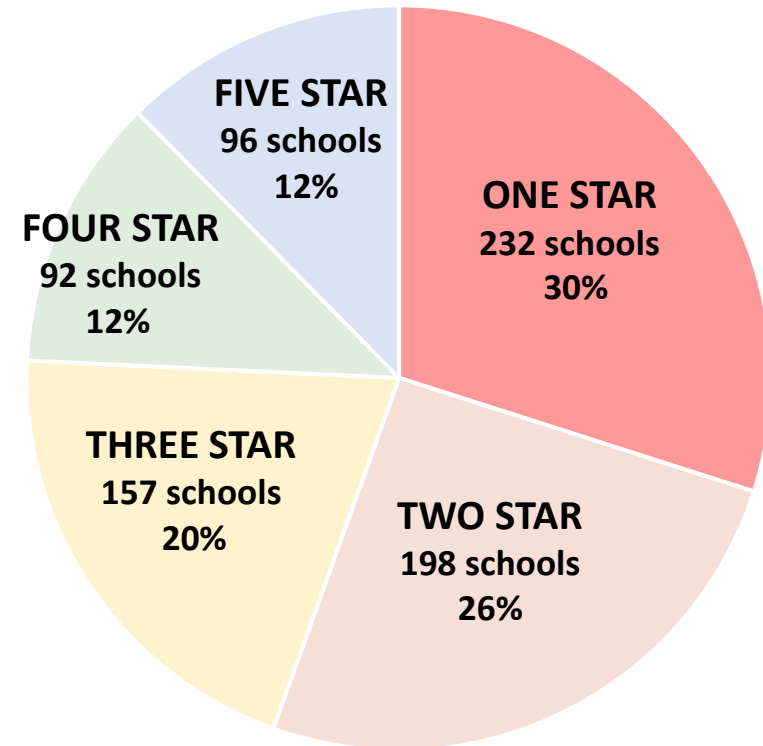


SPCSA



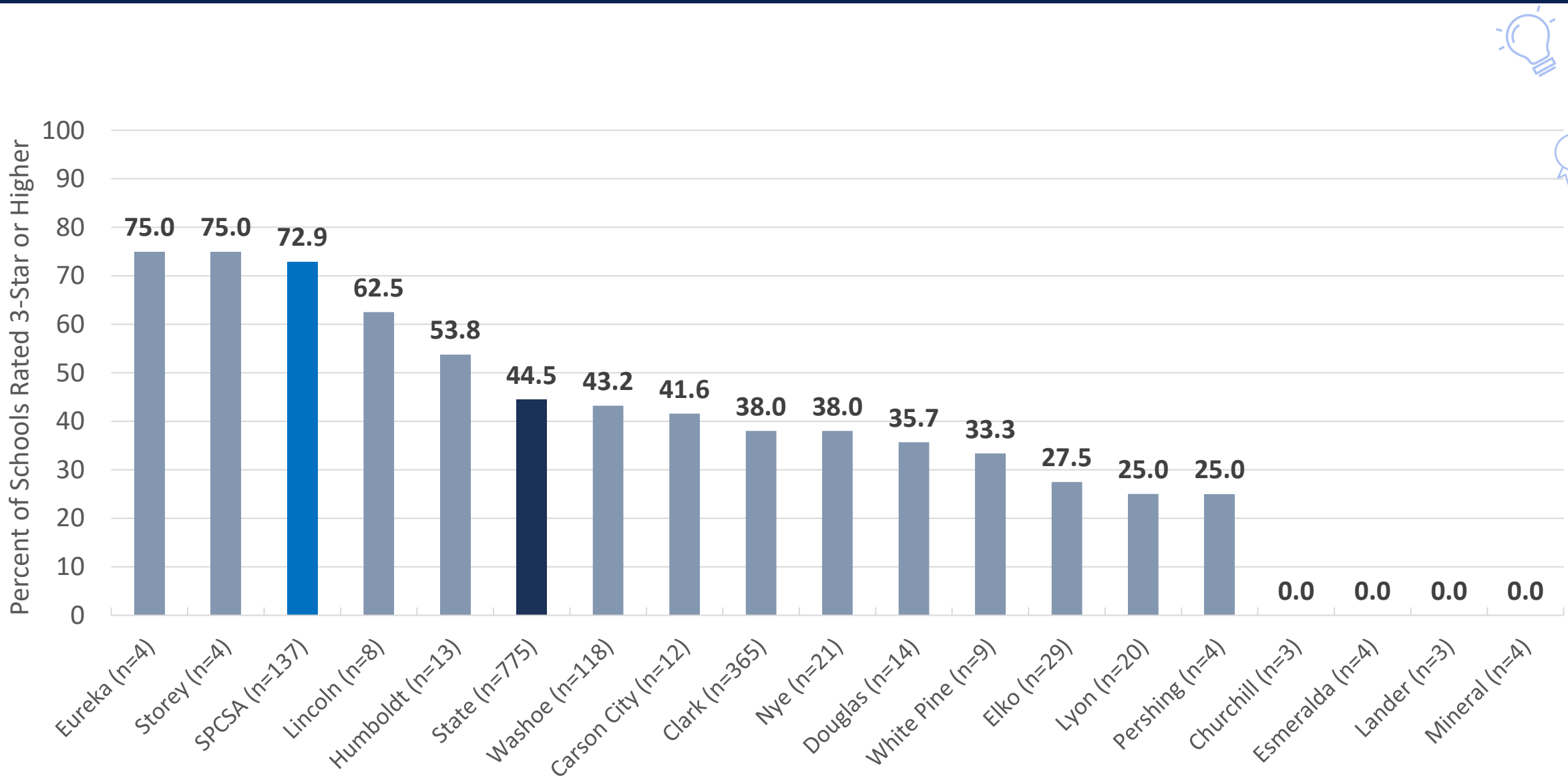
For comparison, in the 2022-23 SY, 12 (8.9%) were 1 star, 24 (17.9%) were 2 star, 35 (26.1%) were 3 star, 20 (14.9%) were 4 star, and 43 (32.0%) were 5 star.

STATE

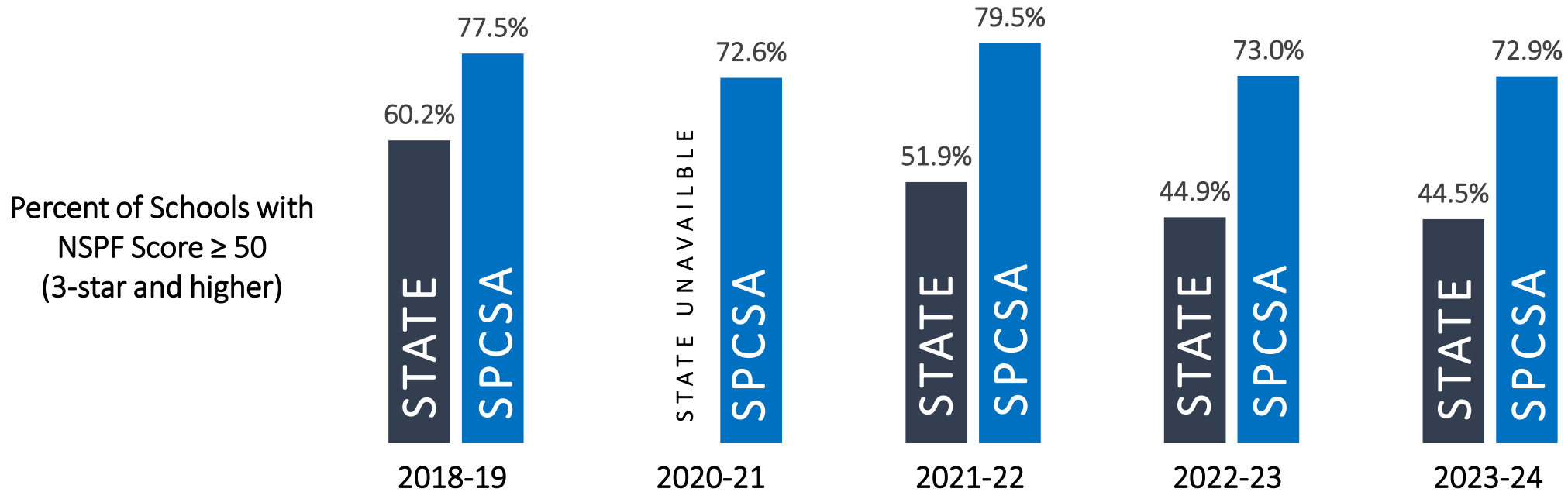


For comparison, in the 2022-23 SY, 223 (29.3%) were 1 star, 195 (25.6%) were 2 star, 179 (23.5%) were 3 star, 79 (10.3%) were 4 star, and 85 (11.1%) were 5 star.

SPCSA vs. Nevada Districts: Percent of Schools with 3-Star or Higher NSPF Rating



SPCSA vs. State: NSPF Score Trends



NSPF Timeline, by School Year

2018-19: Official NDE NSPF index scores / star ratings.

2019-20: US Dept. of Education waiver – NSPF data unavailable due to COVID.

2020-21: US Dept. of Education waiver – NSPF data available but index scores / star ratings not calculated. SPCSA performed unofficial calculations.

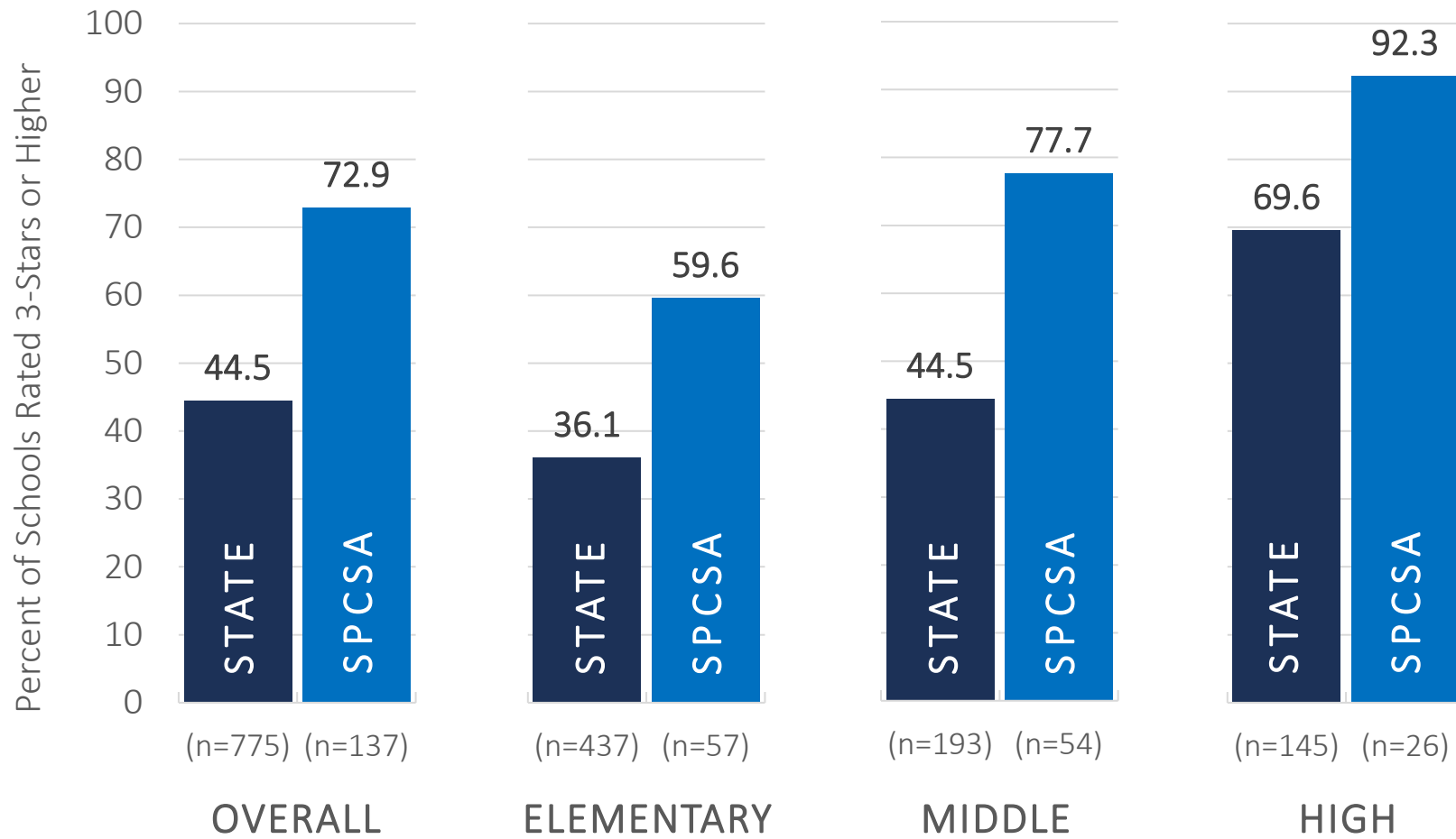
2021-22: NDE calculated NSPF index scores, but not corresponding star ratings.

2022-23: Official NDE NSPF star ratings.

2023-24: Official NDE NSPF star ratings.

Data retrieved from the [Nevada Accountability Portal](#). Only schools that met requirements to receive an NSPF rating (rules found [here](#) on pages 6-7) are included. SPCSA schools are included in the state data.

SPCSA vs. State: Percent of Schools with 3-Star or Higher NSPF Rating



NSPF Star Ratings by School

School	Star Rating
Alpine Acad HS	4
Amplus Durango ES	4
Amplus Durango MS	3
Amplus Durango HS	5
Amplus Rainbow ES	5
Battle Born ES	1
Battle Born MS	1
Beacon Acad HS	1
CASLV Cadence ES	3
CASLV Cadence MS	4
CASLV Cadence HS	NR
CASLV Centennial ES	5
CASLV Centennial MS	5
CASLV Eastgate ES	4
CASLV Nellis Air Force Base ES	2
CASLV Nellis Air Force Base MS	5
CASLV Sandy Ridge MS	3
CASLV Sandy Ridge HS	5
CASLV Tamarus ES	4
CASLV Windmill ES	3
CASLV Windmill MS	5
CIVICA ES	1
CIVICA HS	NR
CIVICA MS	2
Democracy Prep ES	1
Democracy Prep MS	2
Democracy Prep HS	3
Discovery Hillpointe ES	3
Discovery Hillpointe MS	3
Discovery Sandhill ES	3
Doral Cactus ES	4
Doral Cactus MS	5
Doral Fire Mesa ES	3
Doral Fire Mesa MS	5

School	Star Rating
Doral Northern Nevada ES	5
Doral Northern Nevada MS	5
Doral Pebble ES	4
Doral Pebble MS	5
Doral Red Rock ES	5
Doral Red Rock MS	4
Doral Red Rock HS	5
Doral Saddle ES	4
Doral Saddle MS	5
Eagle Nevada ES	1
Elko Inst for Acad Achvmt ES	4
Elko Inst for Acad Achvmt MS	5
Equipo Acad MS	3
Equipo Acad HS	5
Explore Acad MS	1
Explore Acad HS	NR
Founders Classical Acad ES	3
Founders Classical Acad MS	3
Founders Classical Acad HS	3
Freedom Classical Acad ES	1
Freedom Classical Acad MS	4
Futuro Acad ES	3
Honors Acad ES	1
Honors Acad MS	3
Imagine Mountain View ES	1
Imagine Mountain View MS	3
Leadership Acad MS	3
Leadership Acad HS	4
Learning Bridge ES	2
Learning Bridge MS	4
Legacy Cadence ES	2
Legacy Cadence MS	4
Legacy N Valley ES	1
Legacy N Valley MS	2

School	Star Rating
Legacy Southwest ES	5
Legacy Southwest MS	5
Mater Bonanza ES	2
Mater Bonanza MS	3
Mater East Las Vegas ES	4
Mater East Las Vegas MS	3
Mater East Las Vegas HS	NR
Mater Mountain Vista ES	4
Mater Mountain Vista MS	4
Mater Northern Nevada ES	2
Mater Northern Nevada MS	2
Nevada Connections Acad HS	2
Nevada Prep ES	1
Nevada Prep MS	1
Nevada Rise ES	3
Nevada Virtual MS	2
Nevada Virtual HS	3
NSHS Downtown HS	4
NSHS Dtnw Henderson HS	5
NSHS Henderson HS	5
NSHS Meadowood HS	5
NSHS North Las Vegas HS	5
NSHS Northwest HS	5
NSHS Southwest HS	5
NSHS Summerlin HS	5
NSHS Sunrise HS	5
Oasis Acad ES	4
Oasis Acad MS	5
Oasis Acad HS	5
pilotED Cactus Park ES	1
Pinecrest Cadence ES	3
Pinecrest Cadence MS	5
Pinecrest Cadence HS	5
Pinecrest Horizon ES	4

School	Star Rating
Pinecrest Inspirada ES	4
Pinecrest Inspirada MS	5
Pinecrest Northern Nevada ES	3
Pinecrest Northern Nevada MS	5
Pinecrest Sloan Canyon ES	5
Pinecrest Sloan Canyon MS	5
Pinecrest Sloan Canyon HS	5
Pinecrest Springs ES	NR
Pinecrest St Rose ES	5
Pinecrest St Rose MS	5
Pinecrest Virtual MS	3
Pinecrest Virtual HS	NR
Quest Northwest ES	1
Quest Northwest MS	3
Sage Collegiate ES	1
Sage Collegiate MS	1
Signature Prep ES	2
Signature Prep MS	3
Silver Sands ES	1
Silver Sands MS	3
SLAM Acad ES	2
SLAM Acad MS	5
SLAM Acad HS	4
Somerset Aliante ES	3
Somerset Aliante MS	5
Somerset Lone Mountain ES	4
Somerset Lone Mountain MS	5
Somerset Losee ES	2
Somerset Losee MS	2
Somerset Losee HS	3
Somerset North Las Vegas ES	2
Somerset Sky Pointe ES	5
Somerset Sky Pointe MS	5
Somerset Sky Pointe HS	4

School	Star Rating
Somerset Skye Canyon ES	5
Somerset Skye Canyon MS	5
Somerset Stephanie ES	4
Somerset Stephanie MS	5
Southern NV Trades HS	NR
Strong Start Acad ES	NR
TEACH LV ES	1
TEACH LV MS	1
Young Wmn's Ldrship Acad MS	1
Young Wmn's Ldrship Acad HS	NR

NR = Not Rated (school did not meet NSPF rating requirements)

Data displayed are for the 2023-24 school year NSPF.

Proficiency on State Assessments

3rd-8th Grade Smarter Balanced Assessment: SPCSA vs. State Proficiency Trends

State vs SPCSA proficiency trends

By race/ethnicity

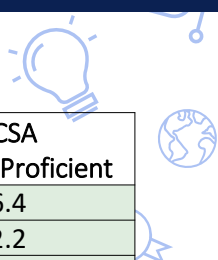
2020-21 to 2023-24

 Indicates SPCSA rate ≥ State rate

 Indicates SPCSA rate < State rate

Year	Group	STATE ELA % Proficient	SPCSA ELA % Proficient	STATE Math % Proficient	SPCSA Math % Proficient
2020-2021	Overall	41.4	53.2	26.3	36.4
2021-2022	Overall	43.7	56.1	29.8	42.2
2022-2023	Overall	41.0	53.3	31.3	44.3
2023-2024	Overall	41.3	54.1	32.6	45.0
2020-2021	Am In/AK Native	25.8	46.1	12.2	25.0
2021-2022	Am In/AK Native	28.1	50.4	15.7	33.6
2022-2023	Am In/AK Native	23.9	44.4	16.3	34.2
2023-2024	Am In/AK Native	24.3	50.4	16.9	30.6
2020-2021	Asian	65.4	73.1	51.4	59.9
2021-2022	Asian	69.1	76.8	56.4	67.3
2022-2023	Asian	66.1	73.8	59.3	68.1
2023-2024	Asian	66.7	75.9	61.5	69.9
2020-2021	Black	25.3	37.2	10.8	18.0
2021-2022	Black	27.1	40.1	13.5	23.3
2022-2023	Black	25.6	36.6	14.8	24.3
2023-2024	Black	26.9	38.1	16.9	26.0
2020-2021	Hispanic	31.3	42.6	16.7	25.6
2021-2022	Hispanic	35.5	46.5	21.1	31.5
2022-2023	Hispanic	32.9	44.7	22.4	34.2
2023-2024	Hispanic	32.9	45.2	23.5	34.6
2020-2021	Pacific Islander	37.8	52.1	22.8	35.3
2021-2022	Pacific Islander	38.6	53.6	24.6	37.1
2022-2023	Pacific Islander	36.4	47.7	28.1	41.9
2023-2024	Pacific Islander	36.6	47.0	28.7	39.7
2020-2021	Two or More Races	49.9	60.3	32.8	43.6
2021-2022	Two or More Races	51.8	62.8	36.8	48.8
2022-2023	Two or More Races	50.1	59.8	39.1	50.7
2023-2024	Two or More Races	50.6	61.1	40.7	52.5
2020-2021	White	53.8	62.7	38.2	46.2
2021-2022	White	56.7	66.1	43.6	53.6
2022-2023	White	53.7	63.8	45.2	57.0
2023-2024	White	54.1	64.9	46.5	58.2

Data retrieved from the [Nevada Accountability Portal](#), which uses slightly different rules from the NSPF. Data displayed include the four most recent available years.



State vs SPCSA proficiency trends

ELL/FRL/IEP student groups

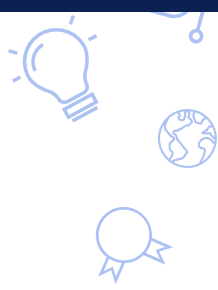
2020-21 to 2023-24

 Indicates SPCSA rate \geq State rate

 Indicates SPCSA rate $<$ State rate

Year	Group	STATE ELA - % Proficient	SPCSA ELA - % Proficient	STATE Math - % Proficient	SPCSA Math - % Proficient
2020-2021	Overall	41.4	53.2	26.3	36.4
2021-2022	Overall	43.7	56.1	29.8	42.2
2022-2023	Overall	41.0	53.3	31.3	44.3
2023-2024	Overall	41.3	54.1	32.6	45.0
2020-2021	ELL	8.3	16.0	6.1	13.4
2021-2022	ELL	12.8	21.1	9.8	17.6
2022-2023	ELL	12.0	18.9	10.9	18.8
2023-2024	ELL	11.4	19.3	11.3	18.4
2020-2021	FRL	32.5	39.8	18.1	23.1
2021-2022	FRL	31.8	44.2	18.8	29.1
2022-2023	FRL	30.1	40.9	20.7	31.1
2023-2024	FRL	38.2	43.1	29.4	33.4
2020-2021	IEP	12.9	20.5	8.5	13.6
2021-2022	IEP	14.0	22.0	10.5	17.8
2022-2023	IEP	13.9	22.5	11.5	20.4
2023-2024	IEP	14.1	21.8	12.0	19.2

5th and 8th Grade Science Assessment: SPCSA vs. State Proficiency Trends



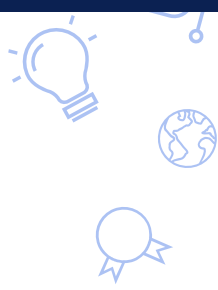
State vs SPCSA proficiency trends

By race/ethnicity

2020-21 to 2023-24

- Indicates SPCSA rate \geq State rate
- Indicates SPCSA rate $<$ State rate

Year	Group	STATE Science % Proficient	SPCSA Science % Proficient
2020-2021	Overall	25.8	36.3
2021-2022	Overall	27.2	37.8
2022-2023	Overall	26.0	36.3
2023-2024	Overall	25.1	35.2
2020-2021	Am In/AK Native	13.3	n<10
2021-2022	Am In/AK Native	16.9	35.1
2022-2023	Am In/AK Native	16.8	32.6
2023-2024	Am In/AK Native	13.2	n<10
2020-2021	Asian	44.0	51.8
2021-2022	Asian	47.9	58.1
2022-2023	Asian	47.8	56.9
2023-2024	Asian	45.4	53.0
2020-2021	Black	11.4	20.4
2021-2022	Black	12.4	23.5
2022-2023	Black	11.6	19.7
2023-2024	Black	12.3	19.7
2020-2021	Hispanic	17.0	27.1
2021-2022	Hispanic	18.7	26.7
2022-2023	Hispanic	18.2	26.9
2023-2024	Hispanic	17.9	26.3
2020-2021	Pacific Islander	20.9	40.4
2021-2022	Pacific Islander	20.8	34.8
2022-2023	Pacific Islander	19.7	25.8
2023-2024	Pacific Islander	18.5	34.1
2020-2021	Two or More Races	32.1	41.4
2021-2022	Two or More Races	34.0	44.0
2022-2023	Two or More Races	31.6	41.5
2023-2024	Two or More Races	32.4	42.3
2020-2021	White	37.4	45.4
2021-2022	White	41.2	49.2
2022-2023	White	39.1	48.5
2023-2024	White	36.8	46.1



State vs SPCSA proficiency trends

ELL/FRL/IEP student groups

2020-21 to 2023-24

 Indicates SPCSA rate \geq State rate

 Indicates SPCSA rate $<$ State rate

Year	Group	STATE Science % Proficient	SPCSA Science % Proficient
2020-2021	Overall	25.8	36.3
2021-2022	Overall	27.2	37.8
2022-2023	Overall	26.0	36.3
2023-2024	Overall	25.1	35.2
2020-2021	ELL	<5.0	6.3
2021-2022	ELL	<5.0	5.1
2022-2023	ELL	<5.0	5.7
2023-2024	ELL	<5.0	6.2
2020-2021	FRL	18.0	24.8
2021-2022	FRL	16.9	26.0
2022-2023	FRL	16.6	23.9
2023-2024	FRL	16.3	24.3
2020-2021	IEP	6.8	12.4
2021-2022	IEP	7.5	11.7
2022-2023	IEP	7.0	12.9
2023-2024	IEP	6.8	12.3

11th Grade ACT Assessment: SPCSA vs. State Proficiency Trends

State vs SPCSA proficiency trends

By race/ethnicity

2020-21 to 2023-24

 Indicates SPCSA rate ≥ State rate

 Indicates SPCSA rate < State rate

Year	Group	STATE ELA % Proficient	SPCSA ELA % Proficient	STATE Math % Proficient	SPCSA Math % Proficient
2020-2021	Overall	46.7	57.5	22.4	27.8
2021-2022	Overall	45.2	53.3	20.5	24.5
2022-2023	Overall	45.9	53.3	19.7	24.8
2023-2024	Overall	45.6	53.4	19.4	22.6
2020-2021	Am In/AK Native	33.8	n<10	15.1	n<10
2021-2022	Am In/AK Native	34.9	n<10	12.0	n<10
2022-2023	Am In/AK Native	31.8	n<10	8.8	n<10
2023-2024	Am In/AK Native	29.0	n<10	6.3	n<10
2020-2021	Asian	69.8	76.1	44.3	52.2
2021-2022	Asian	69.7	79.3	44.0	55.2
2022-2023	Asian	68.7	75.1	41.9	49.6
2023-2024	Asian	71.4	76.9	43.5	45.7
2020-2021	Black	28.8	41.2	8.4	12.1
2021-2022	Black	25.8	37.8	6.8	9.6
2022-2023	Black	27.7	33.5	7.3	10.6
2023-2024	Black	29.9	35.3	7.5	8.6
2020-2021	Hispanic	34.4	43.7	12.6	14.3
2021-2022	Hispanic	33.0	41.3	11.4	13.6
2022-2023	Hispanic	34.8	42.9	11.2	15.2
2023-2024	Hispanic	35.0	46.0	10.7	14.2
2020-2021	Pacific Islander	38.8	58.8	18.3	28.6
2021-2022	Pacific Islander	38.3	35.9	14.6	n<10
2022-2023	Pacific Islander	43.9	55.0	17.7	26.7
2023-2024	Pacific Islander	43.8	44.3	15.6	n<10
2020-2021	Two or More Races	54.7	66.2	26.7	35.8
2021-2022	Two or More Races	56.0	58.4	27.6	30.1
2022-2023	Two or More Races	57.5	64.1	25.0	33.8
2023-2024	Two or More Races	56.5	58.9	26.1	31.7
2020-2021	White	62.1	68.7	34.1	37.4
2021-2022	White	62.0	65.9	31.9	34.0
2022-2023	White	61.4	64.7	31.0	33.2
2023-2024	White	60.1	65.8	31.4	33.5

Data retrieved from the [Nevada Accountability Portal](#), which uses slightly different rules from the NSPF. Data displayed include the four most recent available years.

11th Grade ACT Assessment: SPCSA vs. State Proficiency Trends

State vs SPCSA proficiency trends

ELL/FRL/IEP student groups

2020-21 to 2023-24

 Indicates SPCSA rate ≥ State rate

 Indicates SPCSA rate < State rate

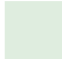

Year	Group	STATE ELA % Proficient	SPCSA ELA % Proficient	STATE Math % Proficient	SPCSA Math % Proficient
2020-2021	Overall	46.7	57.5	22.4	27.8
2021-2022	Overall	45.2	53.3	20.5	24.5
2022-2023	Overall	45.9	53.3	19.7	24.8
2023-2024	Overall	45.6	53.4	19.4	22.6
2020-2021	ELL	<5.0	n<10	<5.0	n<10
2021-2022	ELL	<5.0	9.7	<5.0	n<10
2022-2023	ELL	<5.0	6.3	<5.0	n<10
2023-2024	ELL	7.0	26.0	<5.0	5.6
2020-2021	FRL	37.2	44.7	15.2	16.1
2021-2022	FRL	30.7	41.4	10.3	13.4
2022-2023	FRL	31.8	40.7	10.0	13.5
2023-2024	FRL	42.9	40.3	17.3	12.4
2020-2021	IEP	7.8	13.1	<5.0	5.5
2021-2022	IEP	8.6	17.3	<5.0	5.7
2022-2023	IEP	10.0	19.6	<5.0	<5.0
2023-2024	IEP	10.3	17.2	<5.0	5.9

High School Science Assessment: SPCSA vs. State Proficiency Trends

2020-21 to 2023-24

Year	Group	STATE Science % Proficient	SPCSA Science % Proficient
2020-2021	Overall	29.7	34.2
2021-2022	Overall	20.7	27.3
2022-2023	Overall	20.1	23.3
2023-2024	Overall	20.2	22.8
2020-2021	Am In/AK Native	17.6	n<10
2021-2022	Am In/AK Native	14.0	n<10
2022-2023	Am In/AK Native	10.3	n<10
2023-2024	Am In/AK Native	14.0	n<10
2020-2021	Asian	54.6	56.1
2021-2022	Asian	41.2	47.6
2022-2023	Asian	39.5	44.6
2023-2024	Asian	40.9	44.6
2020-2021	Black	13.7	16.7
2021-2022	Black	8.7	15.7
2022-2023	Black	8.4	10.7
2023-2024	Black	9.0	11.8
2020-2021	Hispanic	19.9	24.9
2021-2022	Hispanic	13.5	17.2
2022-2023	Hispanic	12.7	15.0
2023-2024	Hispanic	13.4	15.6
2020-2021	Pacific Islander	22.3	29.8
2021-2022	Pacific Islander	15.2	24.6
2022-2023	Pacific Islander	13.6	n<10
2023-2024	Pacific Islander	16.2	22.8
2020-2021	Two or More Races	35.6	34.8
2021-2022	Two or More Races	25.8	35.7
2022-2023	Two or More Races	25.4	24.0
2023-2024	Two or More Races	25.5	26.7
2020-2021	White	39.0	44.2
2021-2022	White	31.4	37.9
2022-2023	White	31.7	35.2
2023-2024	White	30.4	31.3

Year	Group	STATE Science % Proficient	SPCSA Science % Proficient
2020-2021	Overall	29.7	34.2
2021-2022	Overall	20.7	27.3
2022-2023	Overall	20.1	23.3
2023-2024	Overall	20.2	22.8
2020-2021	ELL	<5.0	n<10
2021-2022	ELL	<5.0	n<10
2022-2023	ELL	<5.0	n<10
2023-2024	ELL	<5.0	n<10
2020-2021	FRL	22.0	26.2
2021-2022	FRL	12.8	19.7
2022-2023	FRL	12.2	14.4
2023-2024	FRL	12.8	16.4
2020-2021	IEP	7.1	11.4
2021-2022	IEP	5.0	10.7
2022-2023	IEP	<5.0	10.1
2023-2024	IEP	5.0	7.8

-  Indicates SPCSA rate ≥ State rate
-  Indicates SPCSA rate < State rate

Graduation Rates

4-Year Graduation Rates: SPCSA Schools (Class of 2023-24)

Entity	Overall	Amer Ind/AK Native	Asian	Bl/Afr Amer	Hispanic /Latino	Pacific Islander	Two or More	White	Eng Lrnrr (ELL)	Econ Disadv (FRL)	Stud w/Disab (IEP)	CTE	Foster	Homeless	Military Connected
STATE	81.6	74.0	92.8	69.8	80.3	82.4	82.0	86.2	71.5	81.2	68.2	96.9	42.6	62.2	84.3
SPCSA	83.3	92.3	>95.0	71.6	78.4	84.2	84.1	91.5	71.6	78.3	73.4	>95.0	47.0	47.2	47.3
SPCSA Excluding APF Sch.	95.0	>95.0	>95.0	94.5	94.1	>95.0	94.7	>95.0	>95.0	93.9	92.2	>95.0	*	91.6	*
Alpine Acad	97.3	*	*	*	>95.0	N/A	*	>95.0	N/A	>95.0	*	N/A	N/A	*	N/A
Amplus Durango	100.0	N/A	>95.0	>95.0	>95.0	*	>95.0	>95.0	*	>95.0	*	>95.0	N/A	*	N/A
Beacon Acad	19.1	*	10.0	18.1	14.2	27.2	26.3	35.4	19.1	19.2	25.0	*	25.0	12.1	25.0
CASLV Sandy Ridge	99.2	*	>95.0	*	>95.0	*	>95.0	>95.0	*	>95.0	>95.0	*	N/A	*	N/A
Democracy Prep	83.3	N/A	*	88.5	72.2	N/A	N/A	N/A	*	83.0	*	N/A	N/A	*	N/A
Doral Red Rock	99.5	N/A	>95.0	>95.0	>95.0	*	>95.0	>95.0	>95.0	>95.0	>95.0	>95.0	N/A	*	N/A
Equipo Acad	94.4	N/A	N/A	*	>95.0	N/A	N/A	*	91.8	94.4	90.0	N/A	N/A	*	N/A
Explore Acad	*	N/A	N/A	N/A	*	N/A	*	*	*	*	*	N/A	N/A	*	N/A
Founders Acad	100.0	N/A	*	*	>95.0	N/A	*	>95.0	*	>95.0	*	*	N/A	*	N/A
Leadership Acad	90.0	N/A	*	*	*	N/A	*	92.8	*	*	*	N/A	N/A	N/A	N/A
Mater East Las Vegas	98.6	N/A	*	93.3	>95.0	N/A	*	*	>95.0	>95.0	>95.0	>95.0	N/A	94.4	N/A
Nevada Connections Acad	81.9	*	*	86.6	73.1	*	77.7	86.2	*	78.9	78.4	>95.0	*	63.6	*
Nevada Virtual	87.8	*	93.7	88.5	86.0	*	*	88.4	81.8	85.9	76.1	>95.0	N/A	92.3	N/A
NSHS Downtown	100.0	N/A	N/A	*	>95.0	N/A	N/A	*	*	>95.0	*	*	N/A	*	N/A
NSHS Dwtm Henderson	100.0	N/A	*	*	*	N/A	*	>95.0	*	>95.0	N/A	>95.0	N/A	*	N/A
NSHS Henderson	99.2	*	>95.0	*	>95.0	*	>95.0	>95.0	*	>95.0	*	>95.0	*	*	*
NSHS Meadowwood	95.2	N/A	*	N/A	*	N/A	N/A	91.6	N/A	*	N/A	*	N/A	N/A	N/A
NSHS North Las Vegas	95.7	*	*	>95.0	>95.0	N/A	*	*	*	>95.0	N/A	>95.0	N/A	*	N/A
NSHS Northwest	100.0	*	*	*	>95.0	*	>95.0	>95.0	*	>95.0	*	>95.0	N/A	*	N/A
NSHS Southwest	98.7	N/A	>95.0	>95.0	>95.0	*	>95.0	94.7	*	>95.0	*	>95.0	N/A	*	N/A
NSHS Summerlin	96.1	N/A	*	>95.0	85.7	*	>95.0	>95.0	*	>95.0	*	>95.0	N/A	*	N/A
NSHS Sunrise	100.0	N/A	*	*	>95.0	N/A	*	*	*	>95.0	N/A	*	N/A	*	N/A
Oasis Acad	100.0	*	*	N/A	>95.0	N/A	*	>95.0	*	>95.0	*	*	*	*	*

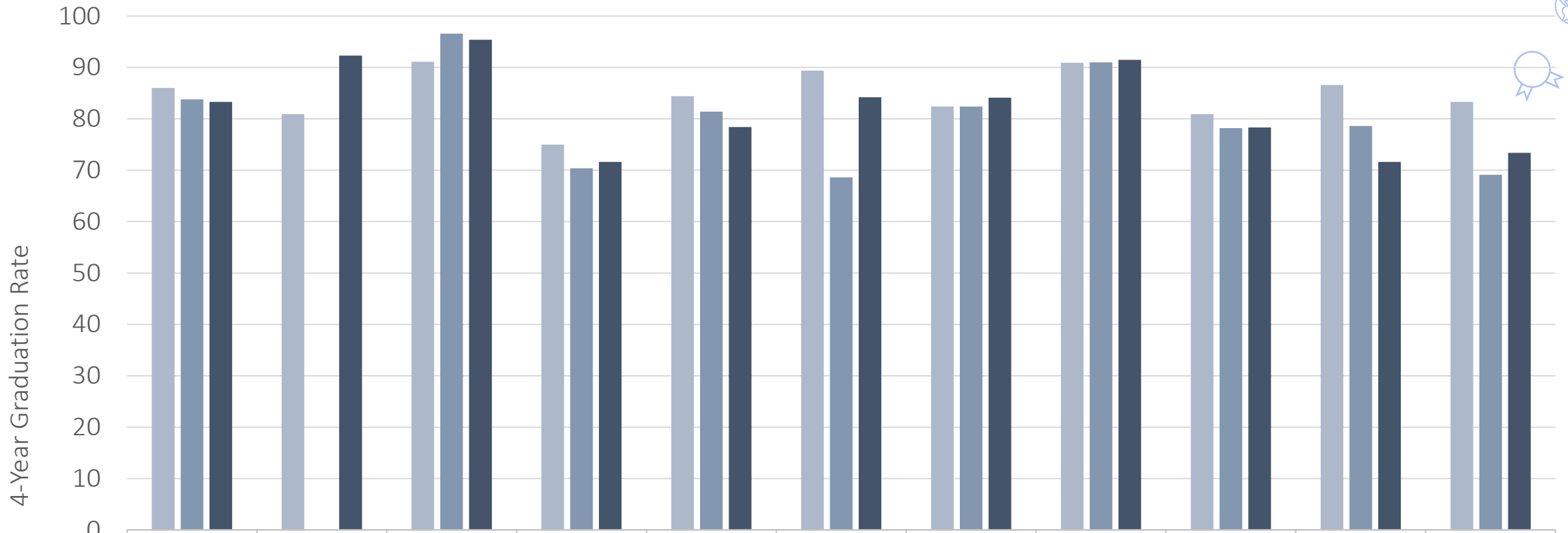
Graduation rates are from the Nevada Department of Education (NDE) class of 2023-24 4-year adjusted cohort graduation rates. To protect student privacy, rates associated with populations >0 and <10 students are displayed with an asterisk (*), and rates >0 and <5, or >95, are shown as <5.0 and >95.0, respectively. N/A indicates the population did not exist. "SPCSA Excluding APF Sch" shows SPCSA rates excluding SPCSA schools rated on the Nevada Alternative Performance Framework (APF), which serve unique student populations such as those that are credit deficient.

4-Year Graduation Rates: SPCSA Schools (Class of 2023-24)

Entity	Overall	Amer Ind/AK Native	Asian	Bl/Afr Amer	Hispanic /Latino	Pacific Islander	Two or More	White	Eng Lnr (ELL)	Econ Disadv (FRL)	Stud w/Disab (IEP)	CTE	Foster	Homeless	Military Connected
STATE	81.6	74.0	92.8	69.8	80.3	82.4	82.0	86.2	71.5	81.2	68.2	96.9	42.6	62.2	84.3
SPCSA	83.3	92.3	>95.0	71.6	78.4	84.2	84.1	91.5	71.6	78.3	73.4	>95.0	47.0	47.2	47.3
SPCSA Excluding APF Sch.	95.0	>95.0	>95.0	94.5	94.1	>95.0	94.7	>95.0	>95.0	93.9	92.2	>95.0	*	91.6	*
Pinecrest Cadence	98.5	*	>95.0	*	>95.0	*	>95.0	>95.0	*	>95.0	94.7	>95.0	N/A	*	N/A
Pinecrest Sloan Canyon	99.1	N/A	>95.0	>95.0	>95.0	*	>95.0	>95.0	*	>95.0	>95.0	>95.0	N/A	*	N/A
SLAM	99.0	N/A	*	>95.0	>95.0	*	*	>95.0	*	>95.0	>95.0	>95.0	N/A	*	N/A
Somerset Losee	98.8	N/A	>95.0	>95.0	>95.0	*	*	94.7	>95.0	>95.0	>95.0	*	*	*	*
Somerset Sky Pointe	99.4	N/A	>95.0	>95.0	>95.0	*	*	>95.0	*	>95.0	>95.0	>95.0	N/A	*	N/A

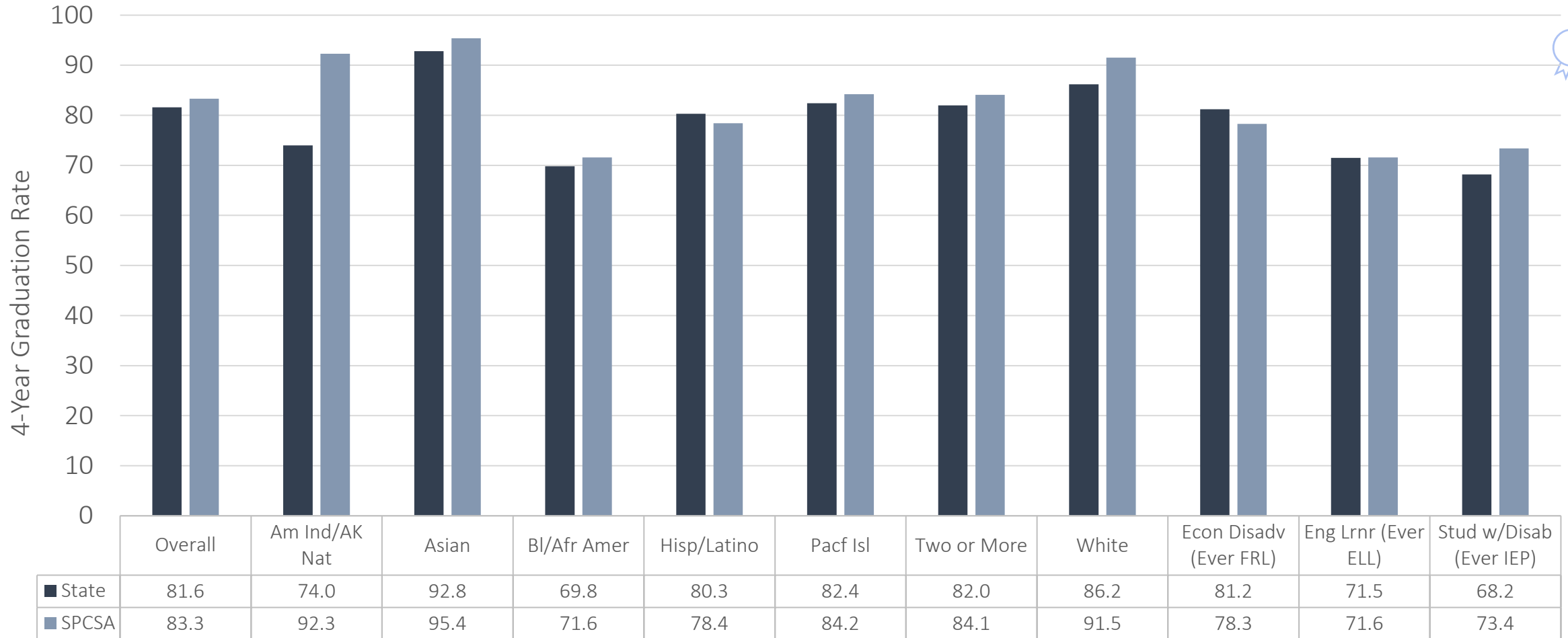
Graduation rates are from the Nevada Department of Education (NDE) class of 2023-24 4-year adjusted cohort graduation rates. To protect student privacy, rates associated with populations >0 and <10 students are displayed with an asterisk (*), and rates >0 and <5, or >95, are shown as <5.0 and >95.0, respectively. N/A indicates the population did not exist. "SPCSA Excluding APF Sch" shows SPCSA rates excluding SPCSA schools rated on the Nevada Alternative Performance Framework (APF), which serve unique student populations such as those that are credit deficient.

4-Year Graduation Rates: SPCSA Student Group Trends

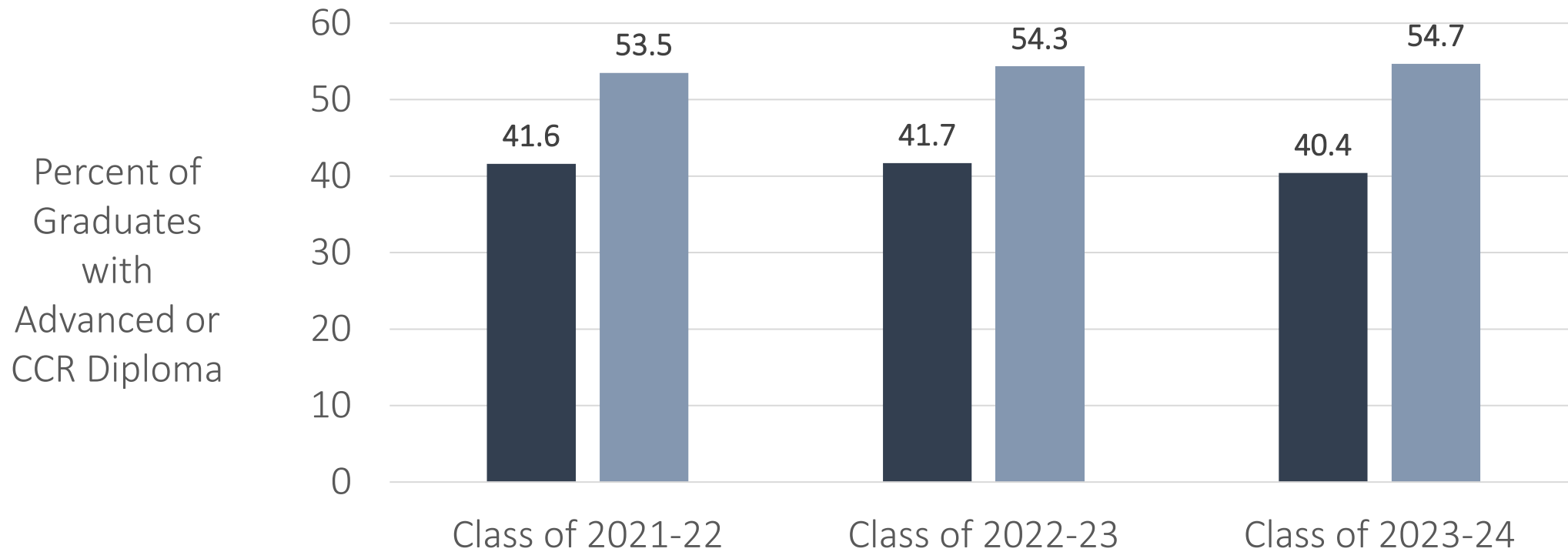


	SPCSA (All Students)	Am Ind/AK Nat	Asian	Bl/Afr Amer	Hisp/Latino	Pacf Isl	Two or More	White	Econ Disadv (Ever FRL)	Eng Lrnr (Ever ELL)	Stud w/Disab (Ever IEP)
■ Class of 21-22	86.0	80.9	91.1	75.0	84.4	89.4	82.4	90.9	80.9	86.6	83.3
■ Class of 22-23	83.8	n<10	96.6	70.4	81.4	68.6	82.4	91.0	78.2	78.6	69.1
■ Class of 23-24	83.3	92.3	95.4	71.6	78.4	84.2	84.1	91.5	78.3	71.6	73.4

4-Year Graduation Rates: SPCSA Comparison to State (Class of 2023-24)

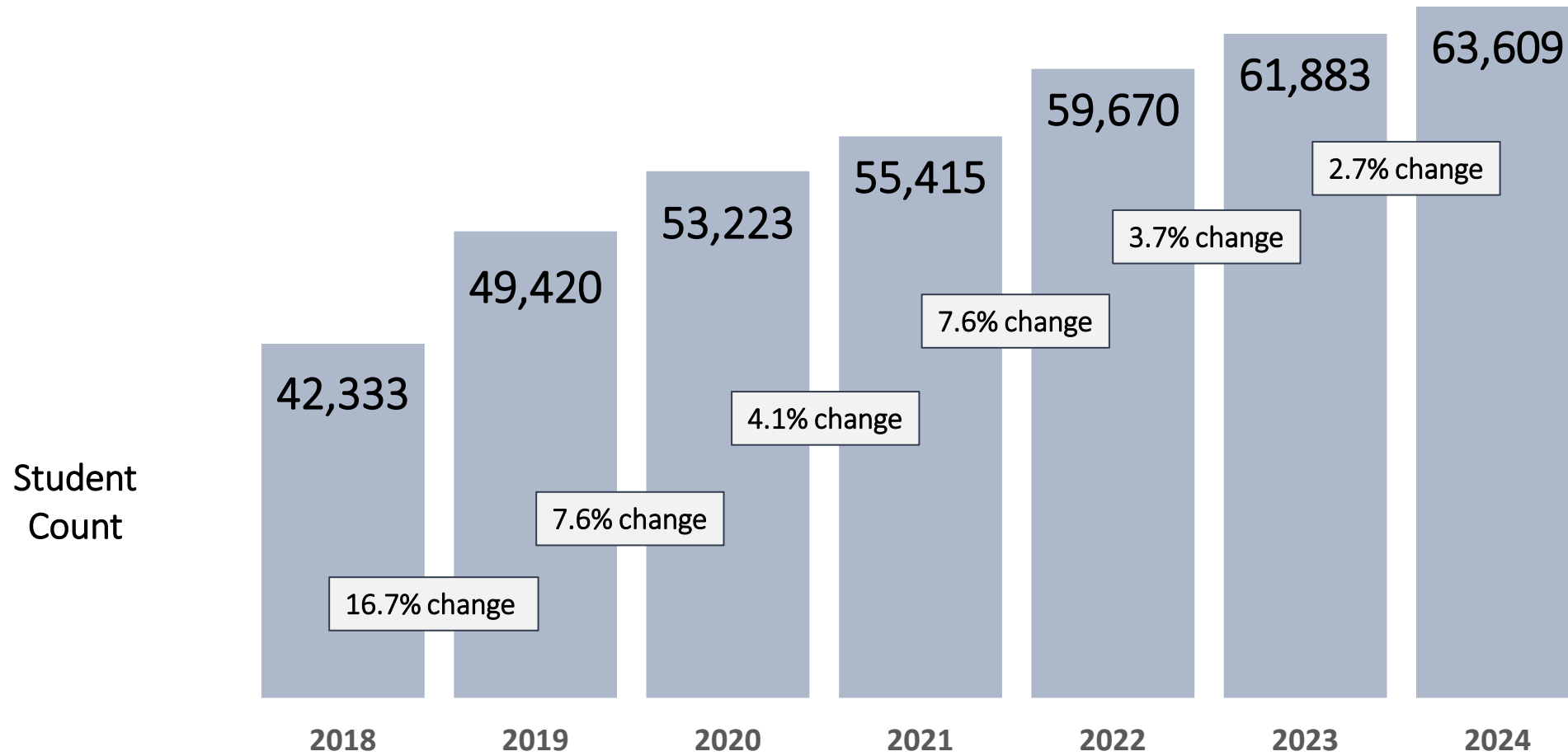


Advanced or CCR Diploma Rates: SPCSA Comparison to State

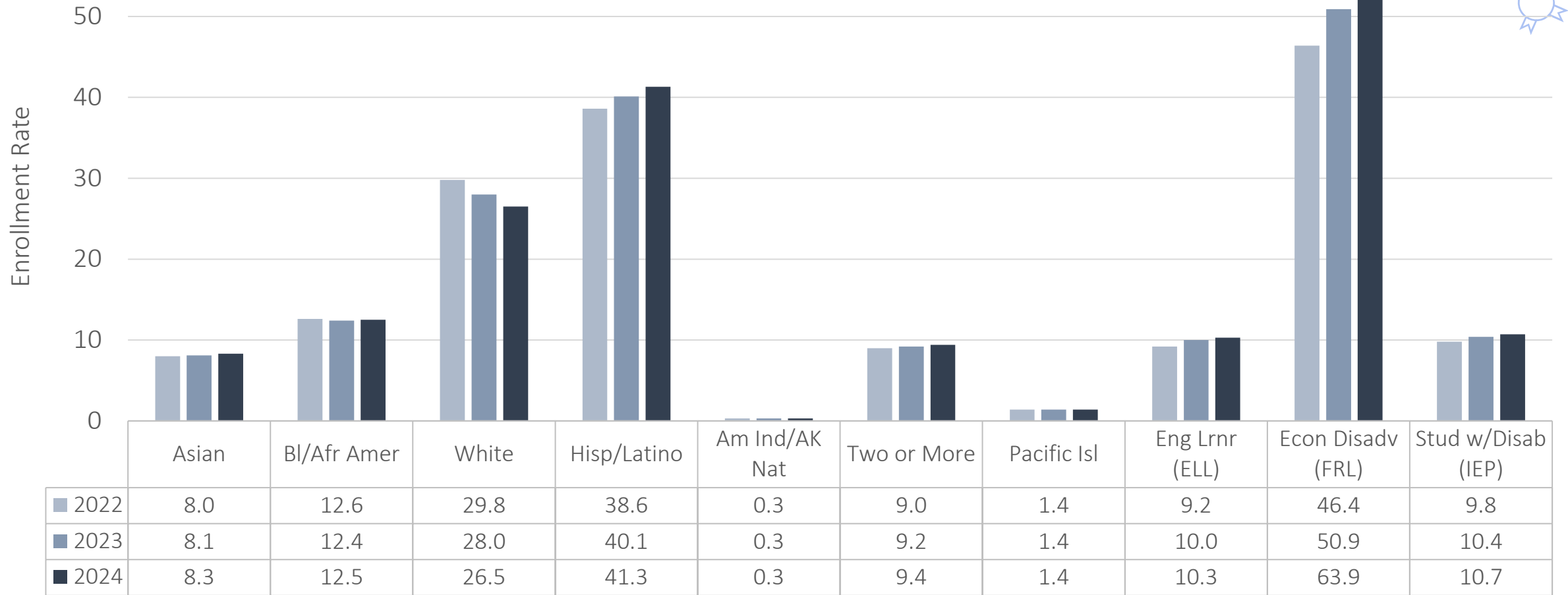


Enrollment and Demographics

Enrollment: SPCSA Trend

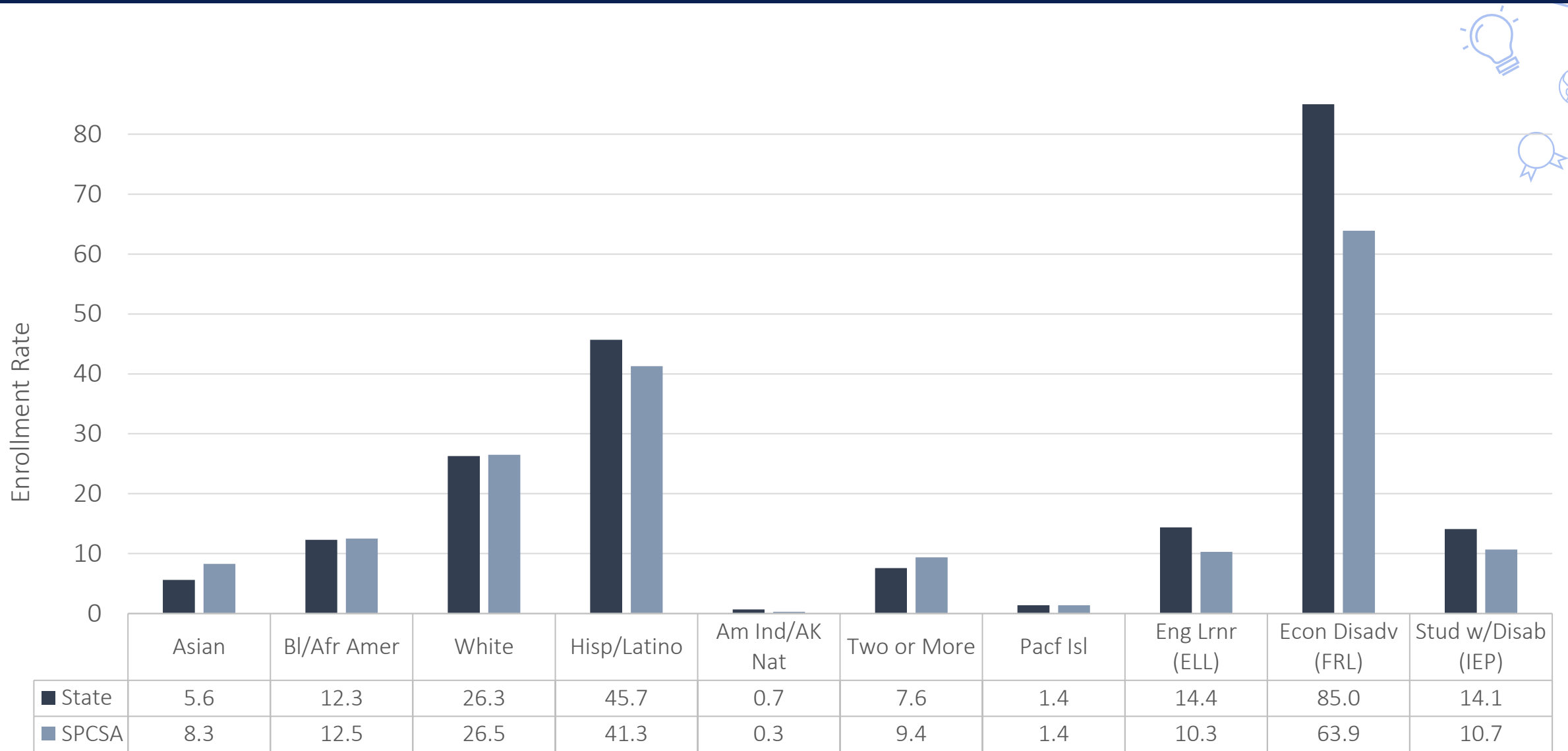


Enrollment: SPCSA Student Group Trends



Enrollment rates are from the Nevada Department of Education October validation day of the respective year.

Enrollment: SPCSA Student Groups Versus State



Enrollment rates are from the Nevada Department of Education (NDE) October 2024 validation day. State data were retrieved from the NDE [website](#).