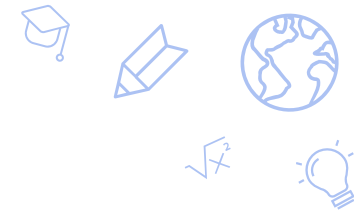




# Learning Bridge Charter School

Milo Jury, Ed. D





# School Information

- LBCS is a K-8 charter school in Ely, Nevada. (student population – 164)
  - Our elementary school (K-5) earned two stars in 2023-2024
- Student population (local district %)
  - Caucasian            65.9% (69.2%)
  - Hispanic             26.2% (19.9%)
- One class per grade level
- Enrollment capped at 22 students per classroom



# Academic Goal(s)

- LBCS will increase Elementary Math proficiency from 26.6% on the 2022-2023 SBAC to 45% on the 2024-2025 SBAC by providing Tier I Instruction and providing Tier II RTI support to Level 1 and level 2 students as identified by 2024-2025 SBAC math assessments.
  - **SBAC Math Proficiency 2023-2024 28.8%; 2022-2023 26.6%**
- LBCS will increase Elementary ELA proficiency from 42% on the 2022-2023 SBAC to 47% on the 2023-2024 SBAC by providing rigorous Tier I instruction and providing Tier II intervention support to students scoring below 40% on NWEA MAP scores during the 2023-2024 school year.
  - **SBAC ELA Proficiency 2023-2024 – 38.9%; 2022-2023 – 41.6%**



# Measurable Action Steps

Currently providing training to staff (long term subs and licensed teachers) on standards, lesson planning, objectives, and Explicit Direct Instruction (EDI).

Measured by

- classroom observations

Currently reviewing math curriculum for rigor, supplementation needs, and student performance.

Measured by

- teacher reports on need for supplementation
- student progress on summative and formative assessments.

# Thank you!

[charterschools.nv.gov](http://charterschools.nv.gov)

