


Silver Sands Montessori Charter School

Administrative Team:

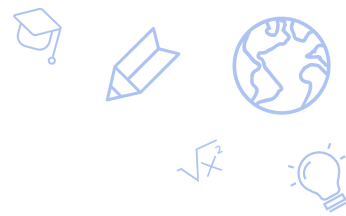
 Marlo Tsuchiyama (Head of School), Sheila Palombo (Principal), Jonathan Valencia (Assistant Principal), and Danette Olmos-Green (Director of Operations)



Our mission is to provide a Montessori education in an environment that encourages a child's love of learning and respect for self, others, community and the world.

Daily Motto: Today I will respect myself, others, the community and the world.

School Information



- **Silver Sands Montessori Charter School Serves grades K through 5**

Elementary (Grades K-5) received 1-star and Below standard rating based on 3-5 grade level SBAC scores

- **Student population metrics:**

- Enrollment for SY2023-2024 (K-5): 169 Total Students.

American Indian/Alaskan Native: 2.4%

Asian: 7.7%

Hispanic/Latino: 54.4%

Black/African American: 7.1%

White: 14.8%

Pacific Islander: 0%

Two or More: 13.6%

- SY2023-2024 Special Populations:

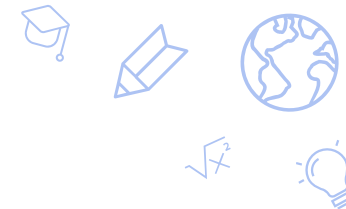
- Special Education: 14.2% of total enrollment (SY2023-24: 21 students) - 12.5% (SY2022-23: 21 students)

- English Language Learners: 12.8% of total enrollment (SY2023-24: 19 Students) - 14.9% (SY2022-23: 25 students)

- At-Risk: 31.5% of total enrollment (SY2023-24: 53 students) - 24.7% (SY2022-23: 43 students)

- **Silver Sands Montessori Charter School**

- Silver Sands Montessori is the only public Montessori school in Southern Nevada. This innovative charter school opened in 2009 with grades K through 5, added a grade level each year, and added 8th grade in 2012. Celebrating our 16th year anniversary, blending the proven principles of Maria Montessori and the state of Nevada's academic performance standards, our students receive a unique combination of learning principles.
- Montessori learning environment teaches to the whole child, in a stimulating and safe multi-age class setting, that allows for movement, hands-on learning, individual responsibility and choices. Our goal is to prepare children for life through community, character building and an environment of mutual respect.



Academic Goal(s)

Silver Sands Montessori Charter School is committed to making academic improvements in Elementary.

- **Academic Performance Data Goals:**

- Measurable goal 1 - To continue to increase the percentage of our K - 5th general education students meeting or exceeding their growth target in Reading from 60% in Fall/Winter 2024 to 70% by Spring 2025, as measured by easyCBM benchmark assessment. To continue to increase the percentage of our K - 5th special education students meeting or exceeding their growth target in Reading from 25% in Fall/Winter 2024 to 30% by Spring 2025, as measured by easyCBM benchmark assessment.
- Measurable goal 2- To continue to increase the percentage of our K - 5th general education students meeting or exceeding their growth target in Mathematics from 45% in Fall/Winter 2024 to 55% by Spring 2025, as measured by easyCBM benchmark assessment. To continue to increase the percentage of our K - 5th special education students meeting or exceeding their growth target in Mathematics from 20% in Fall/Winter 2024 to 25% by Spring 2025, as measured by easyCBM benchmark assessment.

- **Alignment Between the Goal and the NSPF/SPCSA Academic Performance Rating:**

- The goals are aligned with the School Performance Plan- Nevada's STIP 3 goal- All students experience continued academic growth.

- **Alignment Between the Goal and the School Performance Plan:**

- The goals have been aligned with the School Performance Plan.



Measurable Action Steps

- **Measurable steps already taken toward achieving goal:**

- Weekly grade level meetings to discuss progress monitoring data from easyCBM.
- Parent Engagement - Teachers will provide educational resources for parents to utilize at home.
- Homework is sent home weekly to reinforce reading and math content taught.
- Reviewed easyCBM data to organize intervention groups in the areas of reading and math.
- Small group intervention incorporated to their work cycle. 30 minutes daily for reading instruction.
- Small group intervention incorporated to their work cycle. 30 minutes daily for math instruction.
- Targeting students at or near proficient through specialized and focused instruction in reading and math content.
- Teacher experience -Last school year 23/24- 5 out of 6 teachers were licensed. Current school year 24/25- all 7 teachers are licensed.

- **Additional steps towards goals:**

- After school tutoring will be provided weekly in math and reading content areas.
- Implementation of daily classroom intervention reading instruction for 30 minutes a day.
- Assistant Principal to assist weekly in classroom strategies using Montessori curriculum to ensure it is being implemented with integrity.
- Meeting weekly with teachers and Special Programs Facilitator to monitor progress from easyCBM for our IEP, EL, and FRL students.

• **Additional steps towards goals, cont'd:**

- Teacher training- Last school year 23/24- 4 out of 6 teachers were Montessori certified. Current school year 24/25 - 7 teachers out of 7 are Montessori certified or in the process of completing certification.
- Absenteeism - We will be providing monthly incentives rewarding students for perfect attendance. Quarterly reports in Infinite Campus will be reviewed.

• **Measuring progress towards Goals:**

- Reviewing easyCBM data three times a year.
- Progress monitoring will be completed weekly on student interventions and reviewed to evaluate student progress.



Thank you!