



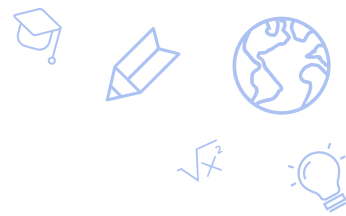
Nevada Prep Charter School



John Haynal
Jeff McAlpine
Fred Rosser
Gena Marino
Cynthia Romero
Patrice Tew



School Information



- Grade level(s)
 - 23-24 3rd-8th 24-25 Kindergarten to 8th
 - Elementary 3-5 (K-2 added 24-25) and Middle 6-8 are at 1 star status
- 406 total students
- 100% FRL 22% EL 22% SPED
- 62% Hispanic/Latino 25.5% African American 7% White
4.5% Two or more races .6% Hawaiian/Pacific Islander .4% Asian
- School is in its 6th year of existence.
- Complete reset of staff and board in 2023-2024 school year as the founding executive director moved on.



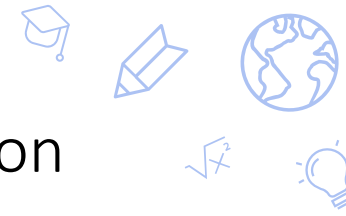
Academic Goal(s)

- Proficiency in Math and ELA for elementary and math for the 24-25 school year will be at 40% on the SBAC for K-5 elementary and 6-8 middle school.
- The percentage of EL students achieving literacy proficiency will increase by 15%.

Reasoning: Nevada Prep's previous 3 star rating was based primarily on growth. We believe our job as a prep school AND as stated in our mission, is having more students on grade-level than our surrounding schools in the East. We also have a large population of Language Learners on campus and want to narrow our focus.

Reasoning: 40% was chosen by studying all 785 schools in Nevada and those on the East side.

Measurable Action Steps



- Studying the instructional practices of our highest performing teachers on campus. Creating a Vision for Instructional Excellence from this data. All teachers are observed and coached regularly and practices are recorded in a master eval database that we use to differentiate support and get a picture of practices on campus.
- Hiring experienced educators that can fulfill this instructional vision.
- Creating a newcomers, language learner role on campus for Tier 3 language supports
- Hiring a behavior administrator to free up an Academic administrator/instructional coach.
- Adding a Tier 3 writing class to the M.S. to ensure reading is the focus of our double blocked ELA classes.
- Continuing to implement and hone our practices within iReady.

MEASURING OUR GOAL: We utilize MAP and iReady data to predict future proficiency on the SBAC. Using this data teachers have created 40% plans for their individual groups of students.

Thank you!

charterschools.nv.gov

