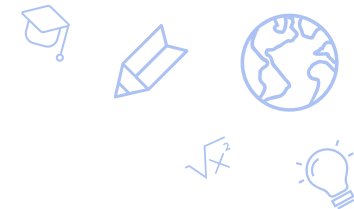


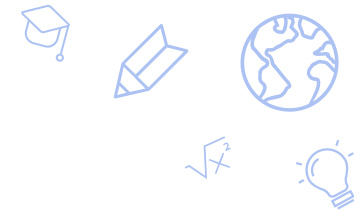
Nevada Connections Academy

Chris McBride, Ph.D.
Superintendent



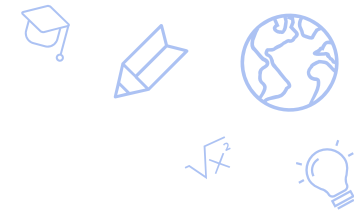
School Information

- Grade level(s)
 - Serve students in grades 9-12
 - 49.5 NSPF score (56 previous year)
- Around 1,200 students and growing
- Title I school enrolling students only in grades 9-10
- Virtual school serving students and families throughout Nevada



Academic Goal(s)

- Raise ACT Math and ELA proficiency rates to earn a minimum of one additional NSPF point in both on the 2024-2025 NSPF rating report.
- Raise English Language Proficiency Indicator to a minimum of three points on the 2024-2025 NSPF rating report.



Measurable Action Steps

- To improve ACT Math/ELA proficiency rates we have newly implemented IXL for all 9-11 students not projected to be proficient.
- We are striving for high usage levels and will be measuring our progress via MAP Benchmarks/IXL diagnostics.
- To improve English Language proficiency rates we are adding additional EL staff as well as adding New Keystone as a resource for our EL students to improve their language proficiency.
- Small group live lessons based upon WIDA Can Do Descriptors.
- Measuring progress for ELs based on MAP/IXL growth

Thank you!

charterschools.nv.gov

