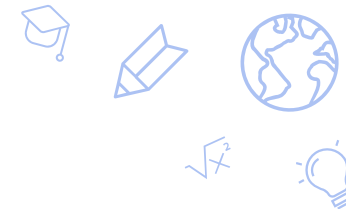




Imagine School Mountainview

Nichole Shaffer- Principal

April Blatzheim – Regional Director



Imagine School Mountain View

- Serve approximately 650 students in grades K-6
- 3-5 – 1 Star rating/ 6th Grade 3 Stars
- Student Demographics:

Ethnicity by Grade Level								
Ethnicity	K	1	2	3	4	5	6	Grand Total
Hispanic	40	40	52	43	29	25	27	256
White	22	27	17	24	20	24	14	148
African American	16	21	26	21	16	16	10	126
Other	12	15	16	17	13	16	8	97
Asian	9	9	7	10	4	8	2	49
Grand Total	99	112	118	115	82	89	61	676

English Proficiency by Grade				Economically Disadvantaged by Grade			Special Ed by Grade				
Grade	Learner	Proficient	Grand Total	Grade	Not Econ Disadv	Econ Disadv	Grand Total	Grade	Not Spec ..	Spec Ed	Grand Total
K	10	89	99	K	51	48	99	K	85	14	99
1	15	97	112	1	56	56	112	1	100	12	112
2	13	105	118	2	57	61	118	2	107	11	118
3	19	96	115	3	61	54	115	3	95	20	115
4	14	68	82	4	48	34	82	4	69	13	82
5	6	83	89	5	47	42	89	5	76	13	89
6	7	54	61	6	31	30	61	6	42	19	61
Grand Total	84	592	676	Grand Total	351	325	676	Grand Total	574	102	676

- 48% Economically Disadvantaged Increase of 15% ESS
- 12.4% English Learner





Academic Goal(s)

- Increase ELA proficiency in grades 3-5 from 44% to 50% on year end SBAC assessment. (state avg. 41.3%)
- Increase Math proficiency in grades 3-5 from 28% to 34% on year end SBAC assessment. (state avg. 32.6%)
 - Increasing proficiency in ELA and Math would result in increased student growth also and align to performance frameworks in both proficiency and growth.
- Reduce chronic absenteeism from 21% to 11% as measured by state attendance. (state avg. 25.9%)
 - Campus reduced chronic absenteeism by 12% last year from 33% to 21%. Further reduction will support the campus to getting closer to goal of 5% or less to get the full points on the performance framework.

Measurable Action Steps (This is an update to our plan from last year)



1. Increase effectiveness of Tier 1 planning & instruction

1. 4 teachers completing ELAD endorsement
2. 24-25 Additional staffing: Special Program Coordinator, Instructional Coach
3. Math lesson observations with feedback/coaching
4. PLC refinement
5. System of walkthroughs and monitoring instruction along with guided feedback

2. Increase Teacher Retention Rate

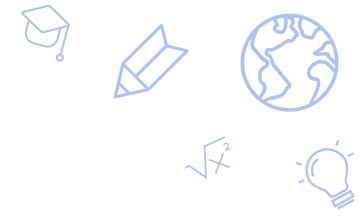
1. 23-24 44% new teachers (7/12 new in testing grades) VS NOW 24-25 14% new teachers (1/12 new in testing grades)
2. Aug 2023 45 behavior referrals VS Aug 2024 14 behavior referrals
3. Sept. – Oct. Behavior referrals decreased by 48%
4. Embedded instructional planning time during the school day
5. Additional instructional coach targeting K-2
6. New Teacher Institute refined
7. Administration check in meetings

3. Using Data to Inform Decision-Making

1. SY 22-23 0% of quartiles met 50+ SGP in math and reading NOW SY 23-24 50% of quartiles met 50+ SGP in math and reading
2. Use of 4DX (4 Disciplines of Execution) model to set and maintain progress toward goals
 - Reading: targeted small group instruction and independent reading fluency practice
 - Math: use of rigorous curriculum and implementation of Zearn trackers

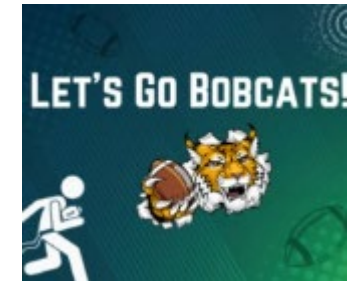
4. Reduce Chronic Student Absenteeism

1. 22-23 Chronic Absenteeism 33% VS 23-24 Chronic Absenteeism 21%
2. Current chronic absenteeism 13% as of 11/7/24



Additional *Level UP* Action Steps

- Academic supports:
 - 4DX- grade level core commitments
 - Quarterly planning sessions
 - CST/Bobcat intervention- Literacy Footprints
 - After school tutoring
 - SBAC prep
- Math
 - Implement Engage curriculum with fidelity
 - Application problem of the week
 - Targeted Math observations and coaching
- Reading
 - Implement CKLA with Fidelity
 - Small group instruction
 - MY ON resource
- Special programs support
 - Implement Lexia (ESS support)
 - Program specialist support ESS and EL



Thank you!

charterschools.nv.gov

