



Battle Born Academy

Kathy Rudd - Co-Founder, Co-Principal
Chantae Readye - Board President





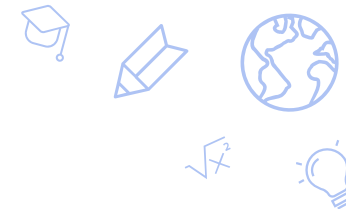
School Information

- Grade Levels Served
 - In 23-24, BBA served students in grades K-7
 - In 24-25, BBA has expanded to serve students in grades K-8
- Student population metrics 23-24
 - 267 Total Enrollment
 - 79.4% Hispanic, 13.9% Black, 3% White, 2% two or more races
 - 16% Students with IEPs
 - 92% FRL
 - 58% English Learners
- Additionally, we want to take a moment to celebrate the tremendous growth our students made:
 - Reduced chronic absenteeism from 38.7% the year prior to 17.6% in our elementary school and 22.6% in middle school
 - Earned 10/10 points for middle school ELA MGP and increased pooled proficiency in both ELA and Math
 - Strong parent involvement - 95+% participation in conferences and more than 600+ attendees at academic events showcasing student work products from project-based learning



Academic Goal(s)

- Goal 1 - Student Growth & Achievement
 - By 2025, BBA students will demonstrate academic proficiency, as measured by the SBAC exam and monitored by the MAP exam
 - Elementary ELA - 28% proficiency
 - Elementary Math - 15% proficiency
 - Middle School ELA - 35% proficiency
 - Middle School Math - 10% proficiency
- Goal 2 - Student Literacy
 - In the 2024-2025 school year, BBA will increase the number of grade-level readers at BBA by 10%.
- Goal 3 - School Culture
 - By 2025, BBA will have an annual chronic absenteeism rate of 20% or lower.



Measurable Action Steps

Working with Raise the Bar (RTB) to identify high-leverage school-wide, teacher-specific, and instructional supports to turn around both growth and achievement.

- Program Changes
 - Robust RTI Services in ELA and Math
 - Additional 45 minutes of math daily (now 1:45) in Elementary
 - Intervention Hour in grades 5+ - students receive an additional hour of intervention-based instruction - 2x/week for all students and 5x/week for high-priority cusp students
 - Tiered attendance intervention system in place for all students
 - Re-aligned and centralized pacing guides K-8 to ensure all students have robust exposure to grade-level content and opportunities for remediation to support rising to grade level
 - Implemented teaching coaching model with support from Opportunity 180
- Staffing
 - Removed ineffective instructors from high-priority grade levels
 - Using RTB models, trained all staff on SBAC alignment and preparation, implemented SBAC school-wide preparation plan.
 - Weekly coaching, targeted internal PDs, and RTB-led PDs have taken place and will continue to do so
- Measuring progress is happening at specified targets for each goal.
 - Achievement - Using MAP and interim assessments to identify gaps. Using RTI process to support individual students
 - Portfolios - Built each trimester, with parent conferences each trimester to accompany accountability
 - Chronic Absenteeism - measured weekly; currently steady at 6% chronic absenteeism

Thank you!

charterschools.nv.gov

