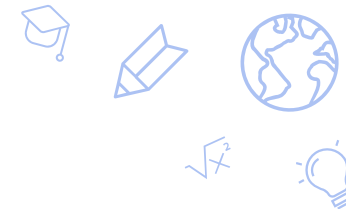


Young Women's Leadership Academy

Selena Torres, Executive Director

Keturah Draper, Principal

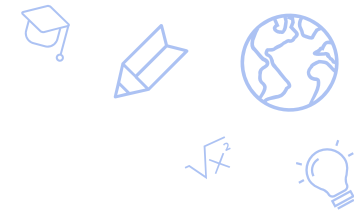


School Information

- Our school currently serves **Grades 6-9**.
 - **Grades 6-8**- Received a 1-star Rating
 - **High School**- Has not yet been rated

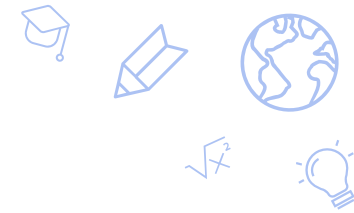
Demographics of YWLA

- 100% Free and Reduced Lunch
- 100% Young Women
- 61% Latino
- 28% Black
- 7% White
- 2% Two or more races



Academic Goal

- YWLA will increase the percentage of all students meeting their AGP (Adequate Growth Percentile) in math from <5% (2023-2024) to 15% (2024-2025) and ELA from 15.8% (2023-2024) to 25.8% (2024-2025) as measured by the 2024-2025 summative SBAC results in Math and ELA.



Measurable Action Steps

- We have provided over 15 hours of Professional Development to staff with an emphasis on Tier I and Tier II strategies, SPED supports, and ELL interventions
- Students are enrolled in a Double Dose and Core Math and ELA classes to receive additional support in filling gaps
- The school has implemented Iready with a winter diagnostic occurring on November 19 and 20th
- The school has purchased new curriculum that aligns to the Nevada State Standards and the Next Generation Science Standards
- The Leadership team is conducting regular formal and informal instructional observations to support

Thank you!

Selena Torres
Executive Director
Storres @ywlalv.org

Keturah Draper
Principal
kdraper@ywlalv.org

