



---

# SPCSA Performance Framework Revisions: SPCSA Board Presentation

Friday, June 21

---

# Logistics

## Purpose

- WestEd has been hired by Opportunity 180 to support SPCSA in their performance framework revisions.
- SCPSA is looking to revise their academic, operational, and financial frameworks to align with national best practices and Nevada's educational landscape.

## Our Goal Today

- Better understand your experience and perspectives as SPCSA board members with the frameworks and solicit feedback on draft recommendations to each framework.

---

## Agenda

- Whole Group Conversation
  - Purpose of SPCSA frameworks
  - Overview of Draft Changes
- SPCA Board Feedback
  - Academic Framework
  - Organizational Framework
  - Financial Framework



---

# Academic Performance Framework

---

---

## Proposed Changes to the SPCSA Academic Performance Framework

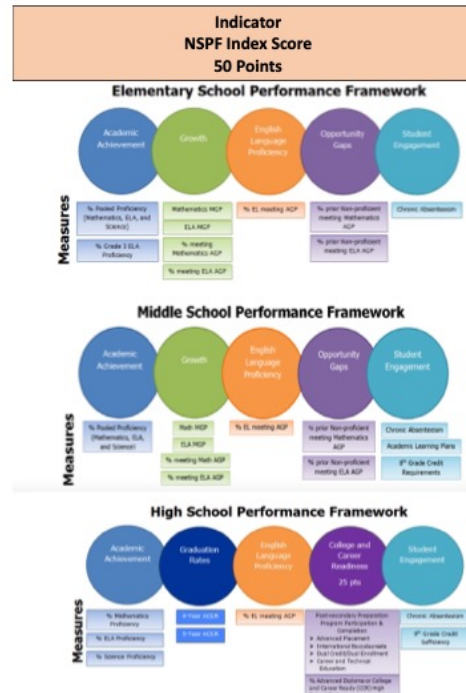
Three version of the Academic Performance Framework have been drafted.

- **Questions that guided the development of these versions:**
  - Is the APF measuring what is required by law?
  - Is the APF measuring outcomes that are charter-specific?
  - \*Is the APF measuring outcomes that are specific to the community that the charter was built to serve?
  - \*Is the APF adding to the school burden?
  - \*Is the APF measuring outcomes that are out of the school's control?
  - \*Is the APF providing clear, concise information for stakeholders, especially families?
  - \*Is the APF aligned to valuing a community-based school?



# Academic Performance Framework: Version 1

## Version 1



**Indicator Geographical Comparison 15 Points**

**Automatic Points**  
5-star schools – 15 points

**Automatic Points**  
4-star schools – 10 points

**Measure Comparison to Zoned District**  
5 points

**Measure Comparison to Zoned School**  
10 points

**Indicator Subgroup Performance 25 Points**

**ES Measure Math and ELA Adequate Growth Percentile**  
Econ. Dis. (FRL) – 8.33 points  
Students w/ Dis. (IEP) – 8.33 points  
English Learners (ELs) – 8.33 points

**MS Measure Math and ELA Adequate Growth Percentile**  
Econ. Dis. (FRL) – 8.33 points  
Students w/ Dis. (IEP) – 8.33 points  
English Learners (ELs) – 8.33 points

**HS Measure College and Career Readiness**  
Econ. Dis. (FRL) – 8.33 points  
Students w/ Dis. (IEP) – 8.33 points  
English Learners (ELs) – 8.33 points

**Indicator Chronic Absenteeism (CA) 10 Points**

**Automatic Points**  
CA <5% - 10 points

**Automatic Points**  
5% ≤ CA < 10% - 5 points

**Measure % decrease in CA**  
>10% improvement – 10 points  
>5% and ≤10% improvement – 5 points  
> 1% and ≤5% improvement – 2.5 points

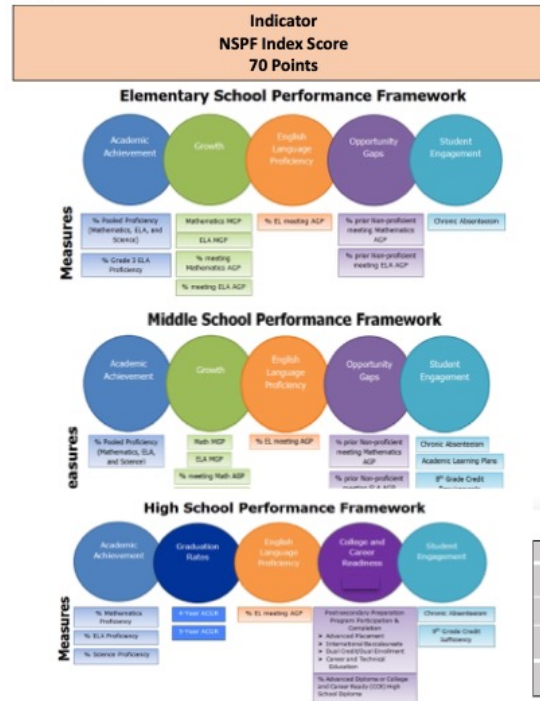
**Indicator Mission-Specific Goals Display Only**

Narrative provided by the schools.

Score Range	Performance Level
≥80	Exceeds Standard
≥50 and <80	Meets Standard
≥20 and <50	Does Not Meet Standard
<20	Below Standard

# Academic Performance Framework: Version 2

## Version 2



**Indicator**  
Chronic Absenteeism (CA)  
10 Points

**Automatic Points**  
CA <5%  
10 points

**Automatic Points**  
5% ≤ CA < 10%  
5 points

**Measure**  
**% decrease in CA**  
>10% improvement – 10 points  
>5% and ≤10% improvement – 5 points  
> 1% and ≤5% improvement – 2.5 points

**Indicator**  
Subgroup Performance  
20 Points

**ES Measure**  
Math and ELA  
Adequate Growth Percentile  
Econ. Dis. (FRL) – 6.67 points  
Students w/ Dis. (IEP) – 6.67 points  
English Learners (ELs) – 6.67 points

**MS Measure**  
Math and ELA  
Adequate Growth Percentile  
Econ. Dis. (FRL) – 6.67 points  
Students w/ Dis. (IEP) – 6.67 points  
English Learners (ELs) – 6.67 points

**HS Measure**  
College and Career Readiness  
Econ. Dis. (FRL) – 6.67 points  
Students w/ Dis. (IEP) – 6.67 points  
English Learners (ELs) – 6.67 points

**Indicator**  
Mission-Specific Goals  
Display Only

**Narrative provided by the school**

**Indicator**  
Geographical Comparison  
Display Only

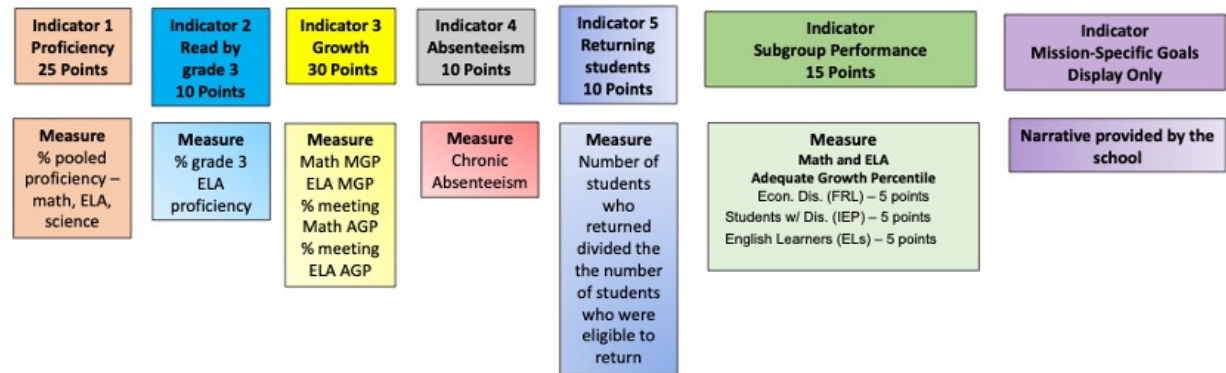
**Comparison to Zoned District**

**Comparison to Zoned School**

Score Range	Performance Level
≥80	Exceeds Standard
≥50 and <80	Meets Standard
≥20 and <50	Does Not Meet Standard
<20	Below Standard

# Academic Performance Framework: Version 3 (Elementary)

## Version 3: Elementary School

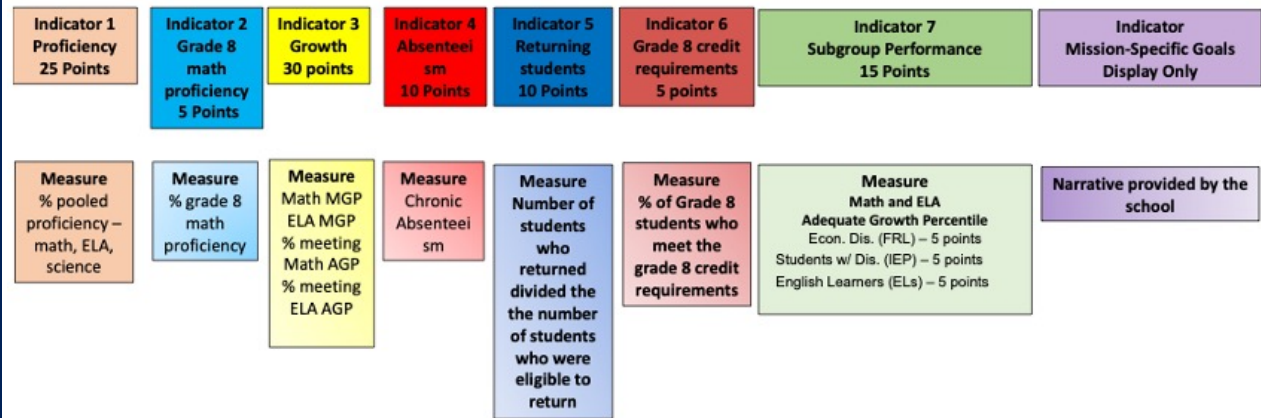


Score Range	Performance Level
≥80	Exceeds Standard
≥50 and <80	Meets Standard
≥20 and <50	Does Not Meet Standard
<20	Below Standard



# Academic Performance Framework: Version 3 (Middle)

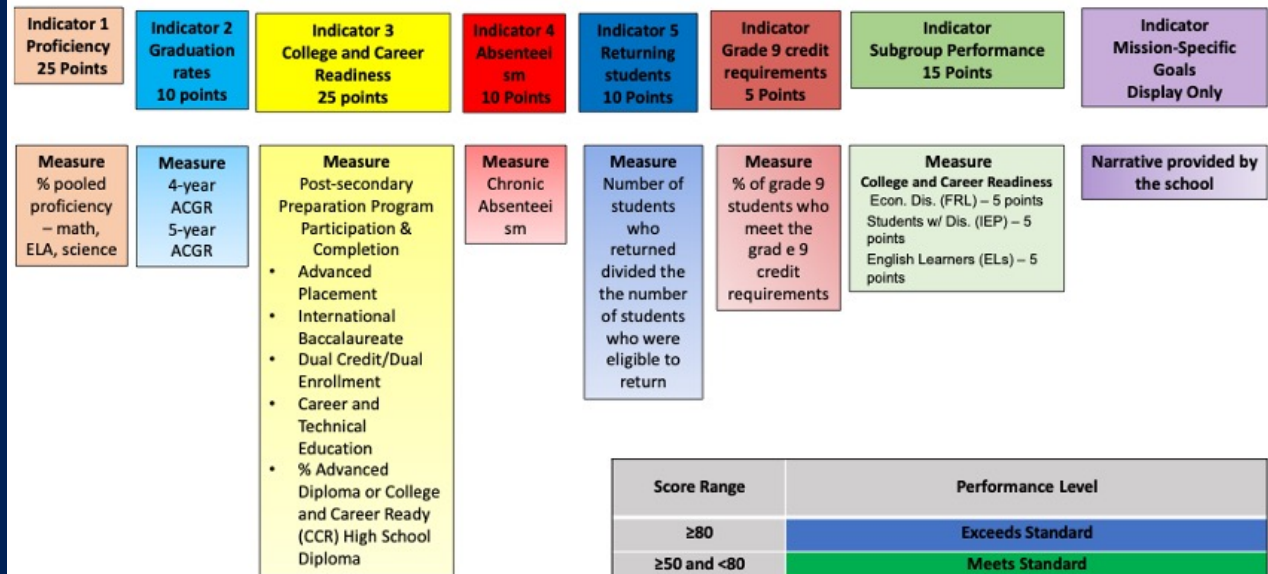
## Version 3: Middle School



Score Range	Performance Level
≥80	Exceeds Standard
≥50 and <80	Meets Standard
≥20 and <50	Does Not Meet Standard
<20	Below Standard

# Academic Performance Framework: Version 3 (High)

## Version 3: High School



Score Range	Performance Level
≥80	Exceeds Standard
≥50 and <80	Meets Standard
≥20 and <50	Does Not Meet Standard
<20	Below Standard



—  
**SPCSA Board  
Feedback**



[Questions & Comments](#)

---

# Organizational Performance Framework

---

---

# Proposed Changes to the SPCSA Organizational Performance Framework

## Process for provided recommended changes:

- Reviewed Nevada statute and code to determine what was required by law to stay intact on the OPF.
- Reviewed and summarized the feedback on the OPF and cross-walked the SPCSA's OPF with NACSA's most recent guidance on performance framework development and use.
- Reviewed other authorizers' frameworks and best practices. And when possible, also discussed these frameworks with the authorizers themselves.

## Feedback themes related to the OPF:

- \*The Organizational Indicators and weight of the measures are not prioritized based on importance.
- The Organizational framework has many measures but does not provide meaningful information to determine the effectiveness of the school's organizational capacity.
- \*Schools found the Organizational framework to be difficult to determine where they were doing well and where there were areas of improvement.



---

# Overview of Changes to the SPCSA Organizational Performance Framework

- 
- Moving financial indicators out of the OPF.
  - Creating a compliance checklist with a separate indicator to provide a school's rating specifically on this checklist.
    - Allows each compliance standard to be assessed individually
    - Supports schools and boards in certifying their compliance
  - Adding quality indicators (SY 2025)
    - Board governance
    - Educational program



—  
**SPCSA Board  
Feedback**



[Questions & Comments](#)

---

# Financial Performance Framework

---

---

## Proposed Changes to the SPCSA Financial Performance Framework

### Questions that guided the development of revisions:

- Does the FPF measuring what is required by law?
- Does the FPF align with the National Association of Charter School Authorizers (NACSA) best practices?
- \*Does the FPF consider the unique context of Nevada charter schools?
- \*Does the FPF provide clear and timely information regarding the financial health of a school?

---

# Overview of Changes to the SPCSA Financial Performance Framework

- 
- Additional context added throughout FPF to better explain metrics included in the framework.
  - Moving annual financial audit metrics from OPF to FPF.
  - Days Cash on Hand
  - Unrestricted Fund Balance





—  
**SPCSA Board  
Feedback**



[Questions & Comments](#)

—  
**Thank you!**

**Additional feedback?**

**Kelly Wynveen**

**[Kelly.Wynveen@wested.org](mailto:Kelly.Wynveen@wested.org)**

**715-417-0707**