

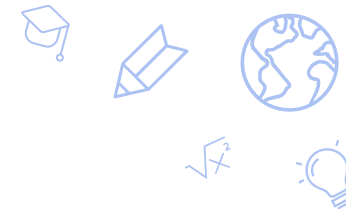


Quest Academy

Janelle Veith, Principal

Jackie Working, Student Support Director





School Information

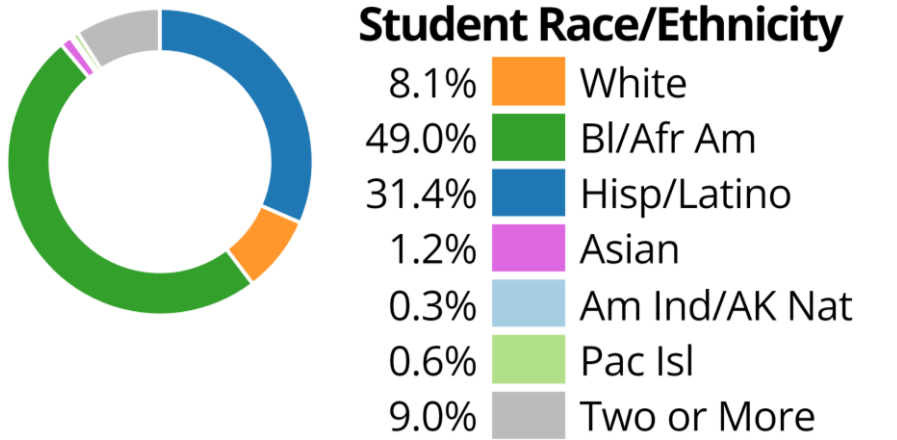
- Grades K-8
 - Quest serves Middle School (6th-8th grade) and Elementary School (Kindergarten-5th grade)
 - The Middle School received a 4-star rating in the 2023 NSPF.
 - The Elementary School received a 1-star rating in the 2023 NSPF.

- Student population metrics

Title I: 100% FRL (free and reduced lunch)
Current ES EL population: 12.7% Elementary school
Current Sped population: 11.1%

- Other relevant characteristics or information

- Leader in Me school
- 16th year of operation with 452 students
- Elementary School scored 57.5 points on the 2022 NSPR





Academic Goal(s)



Elementary Student Success Goal in the School Performance Plan

- Increase the percent of all students proficient in ELA from 29.7% in Spring 2023 to 38.3% by Spring 2024 as measured by the SBAC.
- Increase the percent of all students proficient in Math from 23.5% in Spring 2023 to 27.0% by Spring 2024 as measured by the SBAC.
- The goals align to the NSPF/SPCSA Academic Performance Rating by improving proficiency outcomes. Increasing proficiencies requires high student growth, a main component of the NSPF scoring.

Measurable Action Steps

Steps Already Taken:

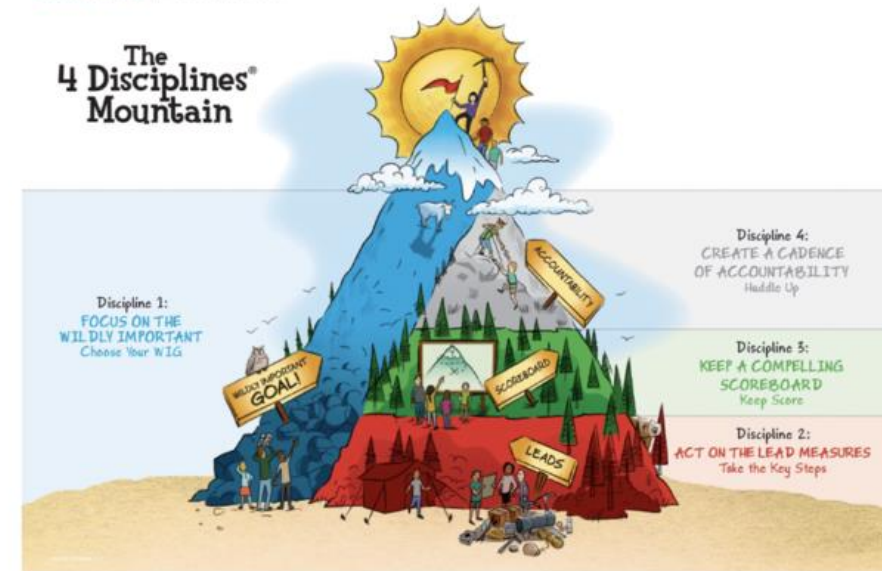
- School Performance Plan updated to reflect root cause analysis based on 2023 SBAC results
- Kagan Training to increase engagement, discourse, and rigor
- High growth instructor moving to EL teacher role to increase positive outcomes for the EL population throughout all grades
- Retain staff that showed high student growth
- Create dedicated K-3 learning strategist role
- Begin year fully staffed
- Analyzed vertical alignment for all core subjects and adjusted as appropriate
- Review NCAS and cross check alignment, revision of curriculum maps,
- MyView pilot in 4th and 5th grade (curriculum currently utilized in MS which received a 4-star rating)

Steps In Progress Throughout the Year:

- Increase instructional support through Principal and Academic Facilitator to include feedback focused on researched based best instructional practices
- Provide scaffolded support to all new staff during pre-service and regularly throughout the school year
- Weekly Student Support Team meetings to review student data, interventions, and action steps
- Focus on growth and zone of proximal development during structured intervention
- Begin transportation services that will remove barrier to attending school

Measuring Progress:

- Progress Monitoring: MAP Growth assessments (Fall, Winter, Spring), monthly Achieve 3000 growth, monthly Dreambox growth, monthly walkthrough data analysis; Data-based decision-making during SST meetings and Professional Development Days



Thank you!

charterschools.nv.gov

