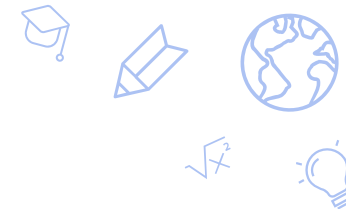




Battle Born Academy

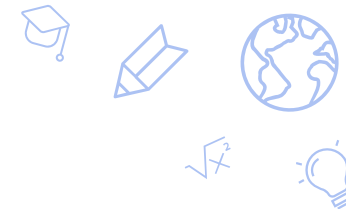
Kathy Rudd - Co-Founder, Co-Principal
Chantae Readye - Board President





School Information

- Grade Levels Served
 - In 22-23, BBA served students in grades K, 1, 5, and 6
 - K-5 students comprised BBA Elementary for star rating purposes (1 star)
 - 6th grade students comprised BBA Middle School for star rating purposes (3 star)
 - In 23-24, BBA has expanded to serve students in grades K-7
- Student population metrics
 - 144 Total Enrollment
 - 66% Hispanic, 18% Black, 15% White, 2% two or more races
 - 15% Students with IEPs
 - 84% FRL
 - 45.8% English Learners
- Battle Born Academy was in its first year of operations. For 80 of the 100 possible points included in the star rating, our N# of students assessed was 21
- Additionally, we want to take a moment to celebrate the tremendous growth our students made:
 - Students made outstanding growth in WIDA - fifth graders made 1.2 average growth points
 - Implemented PBL and had great early results with huge, demonstrable growth in student writing, project skills, social emotional skills (as measured by Panorama)
 - Strong parent involvement for initial year - 94% participation in conferences and hundreds of attendees at academic events showcasing student work products from PBL



Academic Goal(s)

- Goal 1 - Student Growth & Achievement
 - 70% of students meet (or exceed) their individual MAP growth goal in ELA and 70% of students meet (or exceed) their individual MAP growth goal in Math, as measured from their beginning of year projected RIT to their end of year RIT score.
- Goal 2 - Student Leadership
 - 90% of students prepare a portfolio of their work and 80% of students are able to lead a student-led conference by scoring a 2 or 3 on the conference rubric
- Goal 3 - School Culture
 - 28% (or less) of BBA students will be chronically absent.



Measurable Action Steps

- Program
 - Robust RTI Services in ELA and Math
 - Leveled “Walk to Reading” and “Walk to Math” class structure across grade bands to maximize learning and growth for each student
 - Intervention Hour in grades 5+ - students receive an additional hour of intervention-based instruction. Primary focus is literacy with some math
 - Tiered attendance intervention system in place for all students
- Curriculum
 - New math program K-5 - HMH Into Math
 - New ELA intervention model through Accelerated Reader and STAR testing.
- Staffing
 - Literacy Coach
 - Additional Teaching Assistants to support with small-group instruction
 - Additional Office Support to ensure school leaders can focus on academics, data, and teacher coaching
- Measuring progress is happening at specified targets for each goal.
 - Achievement - Using MAP and interim assessments to identify gaps. Using RTI process to support individual students
 - Portfolios - Built each trimester, with parent conferences each trimester to accompany this.
 - Chronic Absenteeism - measured every 6 weeks. Currently steady at 21% chronic absenteeism

Thank you!

charterschools.nv.gov

