



Agenda Item #10: Academic Performance Ratings

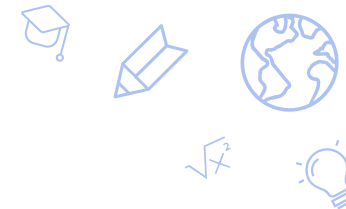
- a. Nevada School Performance Framework (NSPF) Results
- b. SPCSA Academic Performance Framework Results



ATTACHMENT

November 3, 2023





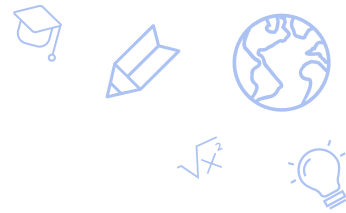
Agenda Item #10: Academic Performance Ratings ATTACHMENT

The following slides contain additional information and school-level results regarding the 2022-23 Nevada School Performance Framework (NSPF), SPCSA Academic Performance Framework, and proficiency.



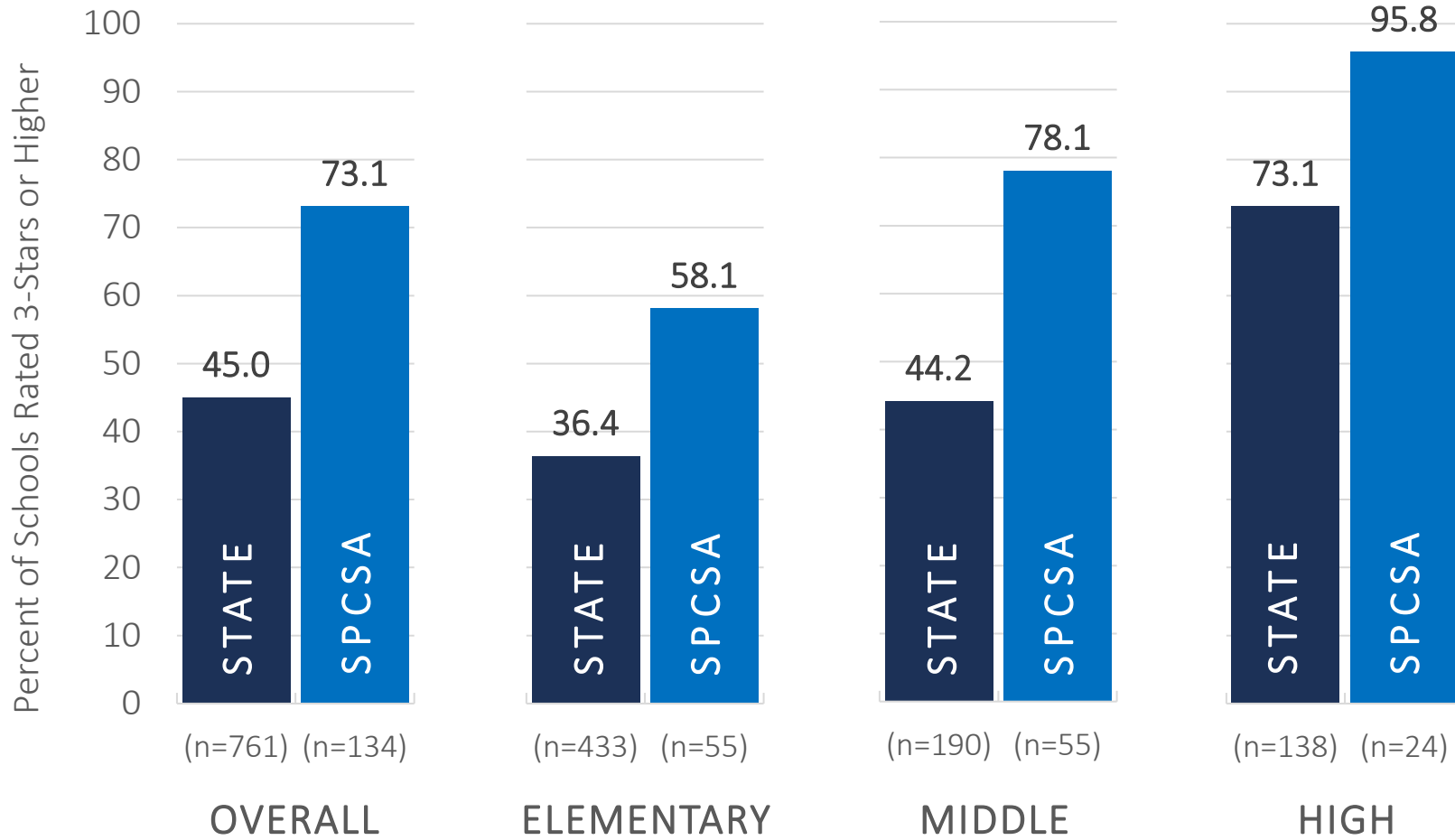
2022-23 Nevada School Performance Framework (NSPF)

Nevada School Performance Framework (NSPF) Rating Levels

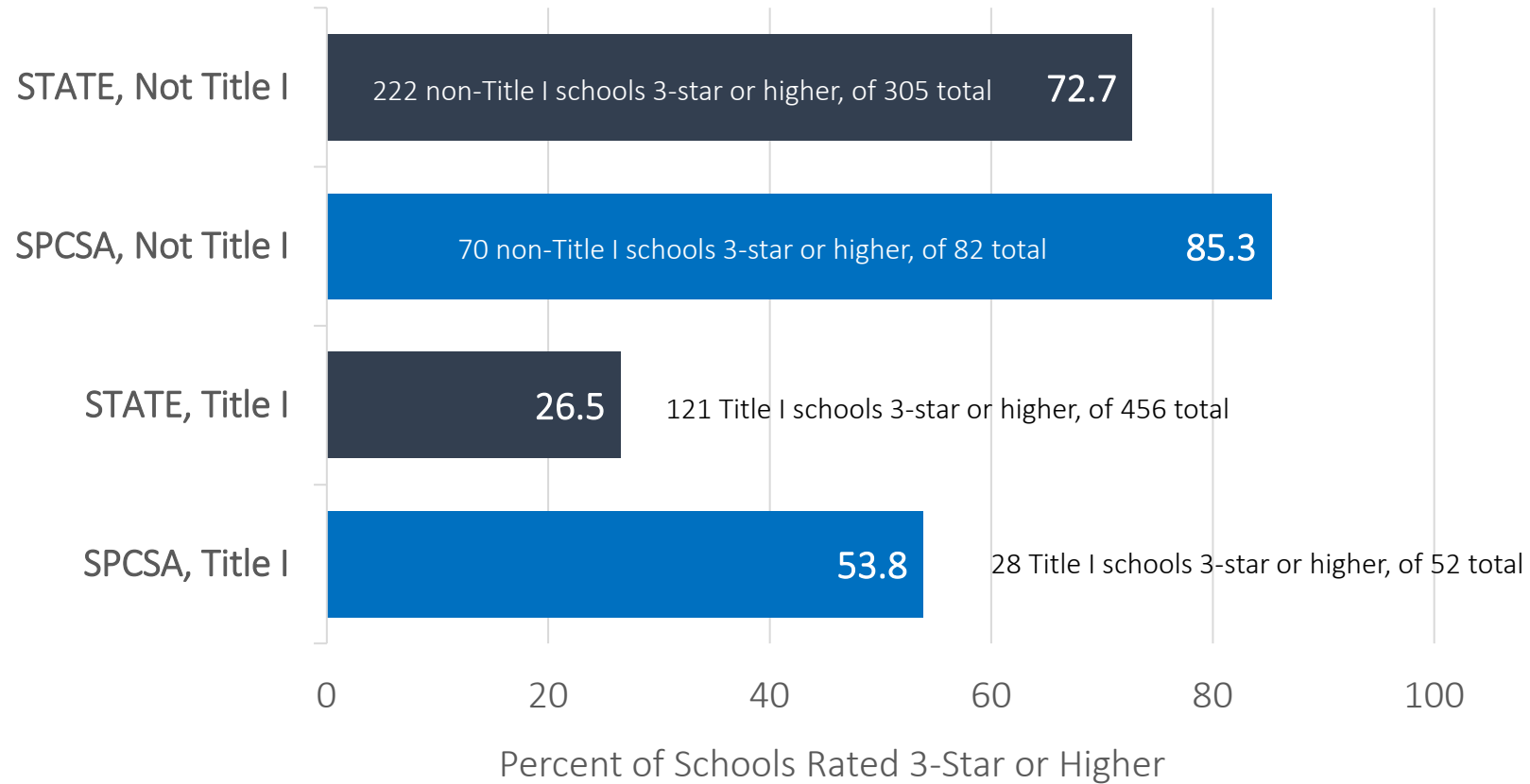
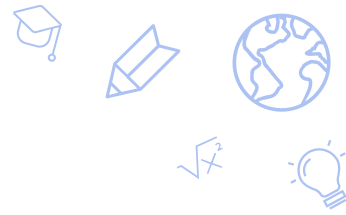


Star Rating	NSPF Score Range	Descriptor
5 Stars	Elem.: ≥84 Middle: ≥80 High: ≥82	Recognizes a superior school that exceeds expectations for all students and subgroups on every Indicator category with little or no exception. A five-star school demonstrates superior academic performance and a superior graduation rate. The school does not fail to meet expectations for any group on any Indicator.
4 Stars	Elem.: ≥67 and <84 Middle: ≥70 and <80 High: ≥70 and <82	Recognizes a commendable school that has performed well for all students and subgroups. A four-star school demonstrates satisfactory to strong academic performance for all students. Further, the school’s graduation rate meets expectations. The school does not fail to meet expectations for any group on any Indicator.
3 Stars	Elem.: ≥50 and <67 Middle: ≥50 and <70 High: ≥50 and <70	Identifies an adequate school that has met the state’s standard for performance. The all-students group has met expectations for academic achievement. Subgroups meet expectations for academic achievement or show progress with little exception; however, no group is far below standard. The school must submit an improvement plan that identifies supports tailored to subgroups and Indicators that are below standard.
2 Stars	Elem.: ≥27 and <50 Middle: ≥29 and <50 High: ≥27 and <50	Identifies a school that has partially met the state’s standard for performance. Students and subgroups often meet expectations for academic performance but may have multiple areas that require improvement. Areas requiring significant improvement are uncommon. The school must submit an improvement plan that identifies supports tailored to subgroups and Indicators that are below standard. A two-star school in consecutive years is subject to state intervention.
1 Star	Elem.: <27 Middle: <29 High: <27	Identifies a school that has not met the state’s standard for performance. Students and subgroups are inconsistent in achieving performance standards. A one-star school has multiple areas that require improvement including an urgent need to address areas that are significantly below standard.

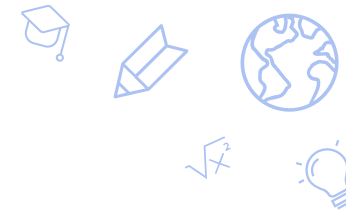
SPCSA vs. State: Percent of Schools with 3-Star or Higher NSPF Rating



Title I School NSPF Ratings



Why Certain SPCSA Schools Did Not Receive an NSPF Rating



To receive an NSPF rating:

- An elementary or middle school must receive points (i.e. have 10 student records) in the Pooled Proficiency, ELA Median Growth Percentile (MGP), Math MGP, ELA Adequate Growth Percentile (AGP), and Math AGP measures.
- A high school must receive points (i.e. have 10 student records) in the ELA Proficiency, Math Proficiency, and 4-Year Graduation Rate measures.

School Name	2022-23 NSPF Star Rating	Reason for Not Rated	Notes
Explore Acad HS	Not Rated	No graduation rate	Will be rated in Sept. 2024
Mater East Las Vegas HS	Not Rated	No graduation rate	Will be rated in Sept. 2025
NSHS North Las Vegas HS	Not Rated	No graduation rate	Will be rated in Sept. 2024
pilotED Cactus Park ES	Not Rated	Insufficient student count to receive growth	Should be rated in Sept. 2024
Pinecrest Sloan Canyon HS	Not Rated	No graduation rate	Will be rated in Sept. 2024
Pinecrest Virtual HS	Not Rated	No graduation rate	Will be rated in Sept. 2026
Strong Start Acad ES	Not Rated	No proficiency or growth	Will be rated in Sept. 2025
Young Women's Leadership Acad HS	Not Rated	No graduation rate	Will be rated in Sept. 2027

2022-23 SPCSA ELEMENTARY SCHOOL NSPF RESULTS



School Name	NSPF Star Rating	NSPF Index Score	Proficiency Pts (25)	Read-By-Gr3 Pts (5)	Math MGP Pts (10)	ELA MGP Pts (10)	Math AGP Pts (7.5)	ELA AGP Pts (7.5)	WIDA Growth Pts (10)	Math Gap Pts (10)	ELA Gap Pts (10)	Chronic Absence Pts (10)
Amplus Durango ES	4	83.5	20	5	9	8	7.5	6	9	6	3	10
Amplus Rainbow ES	5	88	20	4	10	8	7.5	6.5	6	10	6	10
Battle Born ES	1	24.2	1	N/A	4	10	0.5	2.5	1	1	3	0
CASLV Cadence ES	2	44	10	4	1	8	0.5	5.5	7	1	6	1
CASLV Centennial ES	5	97.7	20	5	9	10	7.5	7.5	N/A	10	10	8
CASLV Eastgate ES	4	78.5	20	4	8	9	7.5	7.5	3	7	10	2.5
CASLV Nellis AFB ES	2	39.4	8	4	2	4	3.5	3	N/A	4	5	2
CASLV Tamarus ES	5	87	20	5	5	6	7.5	7.5	7	9	10	9.5
CASLV Windmill ES	4	83.5	20	N/A	8	7	7.5	7.5	N/A	8	5	8
CIVICA ES	2	27.5	1	3	5	6	3	0.5	2	4	3	0
Democracy Prep ES	2	35	3	3	10	6	6.5	1.5	1	7	2	0
Discovery Hillpointe ES	2	42.5	11	4	4	4	6.5	4	1	5	2	0
Discovery Sandhill ES	2	40	1	1	10	4	7.5	0.5	6	8	1	0
Doral Cactus ES	4	81	20	5	8	6	7.5	5.5	3	10	6	9
Doral Fire Mesa ES	2	43	9	4	3	3	4.5	2.5	6	2	3	6
Doral North NV ES	5	87.2	20	5	9	7	7.5	7	N/A	7	6	10
Doral Pebble ES	3	65	19	5	6	6	6.5	5	4	2	4	7.5
Doral Red Rock ES	5	95	20	5	9	10	7.5	7.5	7	10	10	8
Doral Saddle ES	5	85.5	19	5	7	6	7.5	5	10	10	6	9
Elko Inst for Acad Achvmt ES	5	86.1	16	3	8	10	7	7.5	N/A	6	10	10
Founders Acad ES	3	61	7	2	8	7	7	3	6	8	4	8
Freedom Classical Acad ES	2	34	5	2	3	3	4	0.5	5	3	1	6.5
Futuro Acad ES	3	57.5	2	2	10	10	6.5	6	1	10	9	0
Honors Acad ES	1	23.3	3	4	1	2	0.5	0.5	N/A	1	1	7
Imagine Mtn View ES	1	26.5	5	3	4	3	4	1.5	1	3	1	0
Learning Bridge ES	2	38.8	3	2	5	8	3.5	2.5	N/A	4	6	1
Legacy Cadence ES	2	41	5	2	7	5	6	3	1	8	3	0
Legacy N Valley ES	2	34	3	2	5	6	3	3	3	3	5	0
Legacy Southwest ES	3	59.5	16	4	4	5	5.5	5	6	3	5	5
Mater Bonanza ES	3	54	5	3	7	7	5.5	2.5	8	4	2	10
Mater East Las Vegas ES	2	41	3	2	6	3	4.5	0.5	7	4	1	9

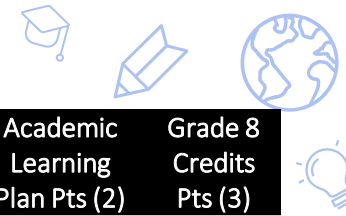
2022-23 SPCSA ELEMENTARY SCHOOL NSPF RESULTS



School Name	NSPF Star Rating	NSPF Index Score	Proficiency Pts (25)	Read-By-Gr3 Pts (5)	Math MGP Pts (10)	ELA MGP Pts (10)	Math AGP Pts (7.5)	ELA AGP Pts (7.5)	WIDA Growth Pts (10)	Math Gap Pts (10)	ELA Gap Pts (10)	Chronic Absence Pts (10)
Mater Mtn Vista ES	3	64.5	7	3	9	7	7.5	3	8	6	4	10
Mater North NV ES	3	65	5	2	10	9	7.5	4.5	5	10	7	5
NV Prep ES	3	50.5	1	1	8	10	4.5	5.5	1	7	9	3.5
NV Rise ES	1	15	1	2	2	5	0.5	0.5	1	1	1	0
Oasis Acad ES	4	73	18	5	7	5	7.5	4	6	8	7	5.5
pilotED Cactus Park ES	Not Rated	5.7	1	1	N/A	N/A	N/A	N/A	N/A	N/A	N/A	0
Pinecrest Cadence ES	5	88.5	20	5	8	10	7.5	7.5	10	10	10	0.5
Pinecrest Horizon ES	5	92	20	4	10	10	7.5	7.5	10	10	10	2
Pinecrest Inspirada ES	4	80.5	20	5	3	7	7.5	7.5	10	5	8	7.5
Pinecrest North NV ES	4	82	18	3	10	9	7.5	6.5	1	10	8	8
Pinecrest Sloan Canyon ES	5	85.5	20	5	9	8	7.5	7.5	4	9	9	6.5
Pinecrest St Rose ES	5	91	20	5	9	8	7.5	7	6	10	9	8.5
Quest Northwest ES	1	18.5	1	1	1	3	0.5	1.5	1	1	1	6.5
Sage Collegiate ES	2	49.4	2	1	10	5	7.5	4	N/A	8	7	0
Signature Prep ES	2	43.5	9	4	4	5	3	2.5	7	4	4	0
Silver Sands ES	1	8.8	1	2	1	1	0.5	0.5	N/A	1	1	0
SLAM Acad ES	1	20	2	2	5	2	2.5	0.5	1	3	1	0
Somerset Aliante ES	3	56	13	4	5	3	6	2	9	5	1	7
Somerset Lone Mtn ES	5	85.5	14	4	9	10	7.5	7	10	8	8	8
Somerset Losee ES	3	53	4	2	9	7	6.5	3.5	1	8	5	6
Somerset North Las Vegas ES	1	24.5	3	2	3	3	3	0.5	1	3	1	4
Somerset Sky Pointe ES	5	90	20	4	10	10	7.5	7.5	1	10	10	10
Somerset Skye Canyon ES	5	91	20	4	10	10	7.5	7.5	4	10	8	9
Somerset Stephanie ES	3	65.5	14	4	8	9	7.5	6	1	5	4	6
Strong Start ES	Not Rated	95	N/A	N/A	N/A	N/A	N/A	N/A	N/A	N/A	N/A	9.5
TEACH LV ES	1	11	1	1	2	3	0.5	0.5	1	1	1	0

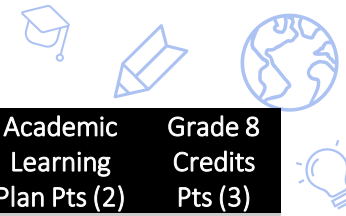
Point totals for each measure are displayed. Numbers within parentheses in column headers display possible points for each measure. Refer to the NSPF [manual](#) for details.

2022-23 SPCSA MIDDLE SCHOOL NSPF RESULTS



School Name	NSPF Star Rating	NSPF Index Score	Proficiency Pts (25)	Math MGP Pts (10)	ELA MGP Pts (10)	Math AGP Pts (5)	ELA AGP Pts (5)	WIDA Growth Pts (10)	Math Gap Pts (10)	ELA Gap Pts (10)	Chronic Absence Pts (10)	Academic Learning Plan Pts (2)	Grade 8 Credits Pts (3)
Amplus Durango MS	3	64.5	21	3	7	4	4.5	4	3	4	10	2	2
Battle Born MS	3	51.1	1	8	7	3	0.5	N/A	10	3	10	2	N/A
CASLV Cadence MS	4	75.5	21	7	9	4.5	4	10	8	5	2	2	3
CASLV Centennial MS	5	80	25	9	3	5	3.5	N/A	10	2	9.5	2	3
CASLV Eastgate MS	5	88.5	25	10	8	5	5	N/A	10	10	2	2	N/A
CASLV Nellis AFB MS	3	66.1	14	8	8	4.5	2.5	N/A	9	6	2.5	2	3
CASLV Sandy Ridge MS	3	65	25	3	7	5	5	N/A	1	1	6.5	2	3
CASLV Windmill MS	5	93.1	25	8	9	5	5	N/A	10	10	7	2	N/A
CIVICA MS	2	35	1	5	9	0.5	1.5	10	1	3	0	2	2
Democracy Prep MS	3	57	8	9	10	3	2	3	9	8	0	2	3
Discovery Hillpointe MS	2	47.5	14	6	5	3.5	3	3	5	3	0	2	3
Doral Cactus MS	5	94.4	25	10	8	5	5	N/A	10	10	7	2	3
Doral Fire Mesa MS	4	70	19	9	7	4.5	3	8	8	3	3.5	2	3
Doral North NV MS	5	87.7	25	7	8	5	5	N/A	10	4	10	2	3
Doral Pebble MS	5	87.5	25	7	6	5	4.5	9	10	6	9	2	3
Doral Red Rock MS	5	80	25	7	7	5	5	10	7	8	1	2	3
Doral Saddle MS	4	78.8	21	8	8	5	4	N/A	9	6	5	2	3
Elko Inst for Acad Achvmt MS	5	94.4	25	10	10	5	5	N/A	10	6	10	2	2
Equipo Acad MS	2	34	1	6	5	0.5	0.5	4	1	1	10	2	3
Explore Acad MS	1	11.1	1	1	1	0.5	0.5	N/A	1	1	0	2	3
Founders Acad MS	5	90	22	9	10	5	4	N/A	10	7	9.5	2	2
Freedom Classical Acad MS	4	74.5	16	9	9	4	2.5	10	8	5	6	2	3
GEMS MS	2	33	1	4	6	0.5	0.5	5	1	3	10	2	0
Honors Acad MS	3	60.5	12	5	5	4.5	2	N/A	9	2	9	2	3
Imagine Mtn View MS	3	59.7	11	3	10	3	4	N/A	9	9	0	2	N/A
Leadership Acad MS	3	65	20	6	7	5	4.5	N/A	2	7	10	2	1
Learning Bridge MS	5	81.1	22	10	10	5	3.5	N/A	9	3	4.5	2	3
Legacy Cadence MS	2	46.5	13	7	5	3	3.5	1	6	4	0	2	1
Legacy N Valley MS	3	54	10	5	8	2.5	2.5	10	6	5	0	2	2
Legacy Southwest MS	4	72.5	23	9	6	5	5	1	10	4	4.5	2	2

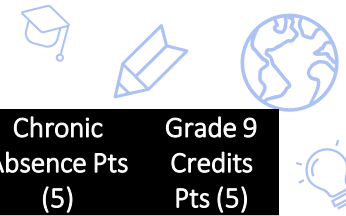
2022-23 SPCSA MIDDLE SCHOOL NSPF RESULTS



School Name	NSPF Star Rating	NSPF Index Score	Proficiency Pts (25)	Math MGP Pts (10)	ELA MGP Pts (10)	Math AGP Pts (5)	ELA AGP Pts (5)	WIDA Growth Pts (10)	Math Gap Pts (10)	ELA Gap Pts (10)	Chronic Absence Pts (10)	Academic Learning Plan Pts (2)	Grade 8 Credits Pts (3)
Mater Bonanza MS	3	52.5	6	5	9	2	1.5	9	4	1	10	2	3
Mater East Las Vegas MS	3	50.5	5	6	7	1.5	1	9	5	4	7	2	3
Mater Mtn Vista MS	3	64.5	17	7	7	4	3.5	2	5	4	10	2	3
Mater North NV MS	3	57	8	8	10	3	1	10	4	3	5	2	3
Nevada Virtual MS	2	33	4	5	5	0.5	0.5	1	1	1	10	2	3
NV Prep MS	3	56	10	10	7	4	1.5	6	10	2	5.5	2	3
Oasis Acad MS	5	86.6	25	6	5	5	5	N/A	10	9	7	2	3
Pinecrest Cadence MS	3	66	21	8	5	5	3.5	5	10	2	2.5	2	2
Pinecrest Inspirada MS	5	95	25	9	8	5	5	N/A	10	10	9.5	2	2
Pinecrest North NV MS	5	85.5	23	8	8	5	3.5	N/A	10	8	5.5	2	3
Pinecrest Sloan Canyon MS	4	74.4	25	6	3	5	4	N/A	7	3	8	2	3
Pinecrest St Rose MS	5	96.1	25	9	10	5	5	N/A	9	10	7.5	2	3
Pinecrest Virtual MS	2	32.7	12	1	2	1.5	2.5	N/A	1	6	1.5	2	0
Quest Northwest MS	4	70	10	8	10	2	2.5	N/A	6	10	8.5	2	3
Signature Prep MS	2	41	8	4	8	1.5	2	5	2	4	0.5	2	3
Silver Sands MS	3	58.3	11	7	9	3	3	N/A	7	5	2.5	2	3
SLAM Acad MS	3	52.5	9	6	8	3	2.5	7	7	6	0	2	2
Somerset Aliante MS	4	76	18	9	10	4	4.5	1	9	7	7.5	2	3
Somerset Lone Mtn MS	3	69.5	20	8	6	5	3.5	6	5	3	7	2	3
Somerset Losee MS	2	44.5	8	4	6	2	1.5	10	2	1	4	2	3
Somerset Sky Pointe MS	5	97.7	25	10	8	5	5	N/A	10	10	10	2	3
Somerset Skye Canyon MS	5	94.4	25	9	7	5	5	N/A	10	10	8	2	3
Somerset Stephanie MS	5	85.5	20	10	10	5	4.5	9	10	9	3	2	2
TEACH LV MS	1	11	1	1	1	0.5	0.5	1	1	1	0	2	2
Young Women's Leadership Acad MS	2	34.4	1	1	10	0.5	3.5	N/A	2	10	0	2	N/A

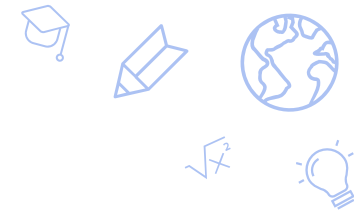
Point totals for each measure are displayed. Numbers within parentheses in column headers display possible points for each measure. Refer to the NSPF [manual](#) for details.

2022-23 SPCSA HIGH SCHOOL NSPF RESULTS



School Name	NSPF Star Rating	NSPF Index Score	Math Pts (10)	ELA Pts (10)	Science Pts (5)	4Yr Grad Rate Pts (25)	5Yr Grad Rate Pts (5)	WIDA Growth Pts (10)	CCR Participation Pts (10)	CCR Completion Pts (10)	Adv+CCR Diploma Pts (5)	Chronic Absence Pts (5)	Grade 9 Credits Pts (5)
Alpine Acad HS	3	65	3	5.5	2.5	25	5	N/A	1	3.5	3	5	5
Amplus Durango HS	5	93	10	10	3.5	25	5	10	10	6	5	4	4
Beacon Acad HS	1	4.4	0.5	0.5	N/A	0	0	1	0.5	0.5	1	0	N/A
CASLV Sandy Ridge HS	5	91.5	10	10	4.5	25	5	7	10	8.5	5	2.5	4
Democracy Prep HS	3	57	4	4.5	0.5	20	5	5	7.5	4	2	0	4
Doral Red Rock HS	4	78.5	4.5	10	2.5	25	5	6	10	6.5	5	0	4
Equipo Acad HS	4	77	2.5	3	0.5	25	5	7	10	10	5	5	4
Explore Acad HS	Not Rated	20	N/A	N/A	2	N/A	N/A	N/A	N/A	N/A	N/A	0	1
Founders Acad HS	4	72.2	6.5	10	2	25	5	N/A	3.5	1	4	5	3
Leadership Acad HS	4	73.3	6	10	2	25	5	N/A	0.5	5.5	5	5	2
Mater East Las Vegas HS	Not Rated	40	1	3	0.5	N/A	N/A	6	N/A	N/A	N/A	3.5	4
Nevada Virtual HS	3	61	2	3.5	2.5	20	4	7	10	2	3	5	2
NSHS Downtown HS	5	85	3.5	4.5	N/A	25	5	N/A	10	10	5	5	N/A
NSHS Dtnw Henderson HS	5	100	10	10	N/A	25	5	N/A	10	10	5	5	N/A
NSHS Henderson HS	5	100	10	10	N/A	25	5	N/A	10	10	5	5	N/A
NSHS Meadowood HS	5	100	10	10	N/A	25	5	N/A	10	10	5	5	N/A
NSHS North Las Vegas HS	Not Rated	71.1	2.5	4.5	N/A	N/A	N/A	N/A	10	10	N/A	5	N/A
NSHS Northwest HS	5	100	10	10	N/A	25	5	N/A	10	10	5	5	N/A
NSHS Southwest HS	5	96.2	7	10	N/A	25	5	N/A	10	10	5	5	N/A
NSHS Summerlin HS	5	100	10	10	N/A	25	5	N/A	10	10	5	5	N/A
NSHS Sunrise HS	5	91.2	3	10	N/A	25	5	N/A	10	10	5	5	N/A
NV Connections Acad HS	3	56	1.5	4.5	2	13	4	6	10	10	2	2	1
Oasis Acad HS	5	92.7	7	10	3	25	5	N/A	10	10	5	3.5	5
Pinecrest Cadence HS	5	89.4	10	10	3	25	5	N/A	8	10	5	0.5	4
Pinecrest Sloan Canyon HS	Not Rated	89.2	10	10	2.5	N/A	N/A	10	10	10	N/A	1.5	4
Pinecrest Virtual HS	Not Rated	15	N/A	N/A	N/A	N/A	N/A	N/A	N/A	N/A	N/A	0.5	1
SLAM Acad HS	4	72.5	1.5	4.5	0.5	25	5	10	10	10	3	0	3
Somerset Losee HS	3	57	2.5	4.5	0.5	25	5	8	1	3	4	0.5	3
Somerset Sky Pointe HS	3	67.5	4	10	2	25	5	1	4	5.5	2	4.5	4
Young Women's Leadership Acad HS	Not Rated	55	N/A	N/A	N/A	N/A	N/A	N/A	N/A	N/A	N/A	4.5	1

Point totals for each measure are displayed. Numbers within parentheses in column headers display possible points for each measure. Refer to the NSPF [manual](#) for details.



2022-23 SPCSA Academic Performance Framework

2022-23 SPCSA ACADEMIC PERFORMANCE FRAMEWORK RESULTS



School Name	Framework Rating	Framework Total Pts	NSPF Pts (60)	Comparison Total Pts (25)	Comparison District Pts (10)	Comparison School Pts (15)	Enrollment Total Pts (15)	FRL Pts (5)	IEP Pts (5)	EL Pts (5)	Enrollment Bonus Pts
Alpine Acad HS	Meets Standard	61	39	11	3	8	11	3	5	2	1
Amplus Durango ES	Exceeds Standard	82.1	50.1	25	10	15	7	1	2	3	1
Amplus Durango MS	Meets Standard	70.7	38.7	24	9	15	8	2	2	3	1
Amplus Durango HS	Exceeds Standard	89.8	55.8	25	10	15	9	2	3	3	1
Amplus Rainbow ES	Exceeds Standard	85.8	52.8	25	10	15	8	3	1	4	0
Battle Born ES	Does Not Meet Standard	33.5	14.5	4	0	4	15	5	5	5	0
Battle Born MS	Meets Standard	65.6	30.6	20	5	15	15	5	5	5	0
Beacon Acad HS	Below Standard	17.6	2.6	0	0	0	15	5	5	5	0
CASLV Cadence ES	Meets Standard	50.4	26.4	18	4	14	6	2	2	2	0
CASLV Cadence MS	Meets Standard	78.3	45.3	25	10	15	8	3	2	3	0
CASLV Centennial ES	Exceeds Standard	89.6	58.6	25	10	15	6	2	2	1	1
CASLV Centennial MS	Meets Standard	79	48	25	10	14	6	2	2	2	0
CASLV Eastgate ES	Meets Standard	78.1	47.1	25	10	15	6	2	1	2	1
CASLV Eastgate MS	Exceeds Standard	89.1	53.1	25	10	15	11	2	4	4	1
CASLV Nellis AFB ES	Does Not Meet Standard	48.6	23.6	17	2	15	8	2	3	1	2
CASLV Nellis AFB MS	Meets Standard	71.6	39.6	25	10	15	7	1	4	2	0
CASLV Sandy Ridge MS	Meets Standard	57	39	10	9	1	8	2	2	2	2
CASLV Sandy Ridge HS	Exceeds Standard	84.9	54.9	25	10	9	5	1	2	2	0
CASLV Tamarus ES	Exceeds Standard	83.2	52.2	25	10	15	6	2	1	3	0
CASLV Windmill ES	Meets Standard	79.1	50.1	25	10	15	4	1	1	2	0
CASLV Windmill MS	Exceeds Standard	84.8	55.8	25	10	15	4	1	1	2	0
CIVICA ES	Does Not Meet Standard	32.5	16.5	3	0	3	13	5	2	5	1
CIVICA MS	Does Not Meet Standard	43	21	7	0	7	15	5	5	5	1
Democracy Prep ES	Does Not Meet Standard	44	21	10	1	9	13	5	3	3	2
Democracy Prep MS	Meets Standard	69.2	34.2	22	7	15	13	5	4	4	0
Democracy Prep HS	Meets Standard	53.2	34.2	6	1	5	13	5	4	4	0
Discovery Hillpointe ES	Does Not Meet Standard	36.5	25.5	3	3	0	8	1	5	1	1
Discovery Hillpointe MS	Does Not Meet Standard	41.5	28.5	5	4	1	8	1	2	4	1
Discovery Sandhill ES	Does Not Meet Standard	47	24	12	2	10	11	3	3	3	2
Doral Cactus ES	Meets Standard	76.6	48.6	22	10	12	6	1	3	2	0
Doral Cactus MS	Exceeds Standard	86.6	56.6	25	10	12	5	1	2	2	0

2022-23 SPCSA ACADEMIC PERFORMANCE FRAMEWORK RESULTS



School Name	Framework Rating	Framework Total Pts	NSPF Pts (60)	Comparison Total Pts (25)	Comparison District Pts (10)	Comparison School Pts (15)	Enrollment Total Pts (15)	FRL Pts (5)	IEP Pts (5)	EL Pts (5)	Enrollment Bonus Pts
Doral Fire Mesa ES	Does Not Meet Standard	42.8	25.8	8	3	5	9	2	4	2	1
Doral Fire Mesa MS	Meets Standard	73	42	22	10	12	9	2	4	3	0
Doral North NV ES	Exceeds Standard	81.3	52.3	25	10	10	4	0	3	1	0
Doral North NV MS	Exceeds Standard	84.6	52.6	25	10	14	7	1	4	2	0
Doral Pebble ES	Meets Standard	70	39	25	10	15	6	1	3	2	0
Doral Pebble MS	Exceeds Standard	84.5	52.5	25	10	14	7	1	2	3	1
Doral Red Rock ES	Exceeds Standard	88	57	25	10	1	6	1	3	2	0
Doral Red Rock MS	Exceeds Standard	80	48	25	10	1	7	1	3	2	1
Doral Red Rock HS	Meets Standard	71.1	47.1	15	8	0	9	1	5	3	0
Doral Saddle ES	Exceeds Standard	82.3	51.3	25	10	15	6	1	2	2	1
Doral Saddle MS	Meets Standard	74.2	47.2	20	10	10	7	2	3	2	0
Elko Inst for Acad Achvmt ES	Exceeds Standard	88.6	51.6	25	10	15	12	4	5	2	1
Elko Inst for Acad Achvmt MS	Exceeds Standard	95.6	56.6	25	10	15	14	5	5	4	0
Equipo Acad MS	Does Not Meet Standard	41.4	20.4	10	0	10	11	5	2	4	0
Equipo Acad HS	Exceeds Standard	81.2	46.2	22	7	15	13	5	3	5	0
Explore Acad MS	Below Standard	18.6	6.6	0	0	0	12	4	5	3	0
Explore Acad HS	Could Not Be Rated	N/A	N/A	N/A	N/A	N/A	12	3	5	3	1
Founders Acad ES	Meets Standard	69.6	36.6	24	9	15	9	2	3	2	2
Founders Acad MS	Exceeds Standard	85	54	25	10	15	6	1	2	2	1
Founders Acad HS	Meets Standard	69.3	43.3	21	6	15	5	1	1	3	0
Freedom Classical Acad ES	Does Not Meet Standard	39.4	20.4	9	1	8	10	3	3	3	1
Freedom Classical Acad MS	Exceeds Standard	81.7	44.7	25	10	15	12	3	4	4	1
Futuro Acad ES	Meets Standard	69.5	34.5	23	8	15	12	5	2	5	0
GEMS MS	Does Not Meet Standard	39.8	19.8	5	0	5	15	5	5	5	0
Honors Acad ES	Below Standard	19.9	13.9	0	0	0	6	0	5	1	0
Honors Acad MS	Meets Standard	65.3	36.3	20	8	12	9	1	5	3	0
Imagine Mtn View ES	Does Not Meet Standard	25.9	15.9	0	0	0	10	3	3	3	1
Imagine Mtn View MS	Meets Standard	71.8	35.8	23	8	15	13	3	5	3	2
Leadership Acad MS	Meets Standard	63	39	18	7	11	6	1	3	2	0
Leadership Acad HS	Meets Standard	67.9	43.9	15	6	9	9	1	5	2	1
Learning Bridge ES	Does Not Meet Standard	44.2	23.2	14	1	13	7	0	2	5	0

2022-23 SPCSA ACADEMIC PERFORMANCE FRAMEWORK RESULTS



School Name	Framework Rating	Framework Total Pts	NSPF Pts (60)	Comparison Total Pts (25)	Comparison District Pts (10)	Comparison School Pts (15)	Enrollment Total Pts (15)	FRL Pts (5)	IEP Pts (5)	EL Pts (5)	Enrollment Bonus Pts
Learning Bridge MS	Exceeds Standard	80.6	48.6	25	10	15	7	0	2	5	0
Legacy Cadence ES	Does Not Meet Standard	47.6	24.6	16	3	13	7	3	2	2	0
Legacy Cadence MS	Does Not Meet Standard	49.9	27.9	13	4	9	9	3	3	3	0
Legacy N. Valley ES	Does Not Meet Standard	39.4	20.4	12	1	11	7	3	1	3	0
Legacy N. Valley MS	Meets Standard	62.4	32.4	21	6	15	9	3	2	3	1
Legacy Southwest ES	Does Not Meet Standard	49.7	35.7	8	8	0	6	2	1	2	1
Legacy Southwest MS	Meets Standard	65.5	43.5	17	10	7	5	2	1	2	0
Mater Bonanza Acad ES	Meets Standard	66.4	32.4	22	7	15	12	5	2	5	0
Mater Bonanza Acad MS	Meets Standard	66.5	31.5	21	6	15	14	5	4	5	0
Mater ELV ES	Meets Standard	52.6	24.6	15	3	12	13	5	3	5	0
Mater ELV MS	Meets Standard	63.3	30.3	20	5	15	13	5	3	5	0
Mater ELV HS	Not Rated	N/A	N/A	N/A	N/A	N/A	15	5	5	5	0
Mater Mtn Vista Acad ES	Meets Standard	77.7	38.7	25	10	15	14	5	4	5	0
Mater Mtn Vista Acad MS	Meets Standard	74.7	38.7	24	9	15	12	5	2	5	0
Mater North NV ES	Meets Standard	78	39	24	9	15	15	5	5	5	0
Mater North NV MS	Meets Standard	71.2	34.2	22	7	15	15	5	5	5	0
Nevada Virtual MS	Does Not Meet Standard	30.8	19.8	0	0	0	11	4	4	3	0
Nevada Virtual HS	Meets Standard	54.6	36.6	5	2	3	13	4	5	3	1
NSHS Downtown HS	Exceeds Standard	89	51	25	10	14	13	5	2	5	1
NSHS Dtown Henderson HS	Exceeds Standard	90	60	25	10	15	5	1	1	2	1
NSHS Henderson HS	Exceeds Standard	89	60	25	10	15	4	1	1	2	0
NSHS Meadowwood HS	Exceeds Standard	89	60	25	10	15	4	2	0	2	0
NSHS North Las Vegas HS	Not Rated	N/A	N/A	N/A	N/A	N/A	6	3	1	2	0
NSHS Northwest HS	Exceeds Standard	90	60	25	10	15	5	2	1	2	0
NSHS Southwest HS	Exceeds Standard	89.7	57.7	25	10	15	7	2	1	3	1
NSHS Summerlin HS	Exceeds Standard	92	60	25	10	15	7	2	1	3	1
NSHS Sunrise HS	Exceeds Standard	88.7	54.7	25	10	15	9	4	1	4	0
NV Connections Acad HS	Does Not Meet Standard	45.6	33.6	0	0	0	12	3	5	3	1
NV Prep ES	Meets Standard	65.3	30.3	21	6	15	14	5	3	5	1
NV Prep MS	Meets Standard	70.6	33.6	22	7	15	15	5	5	5	0
NV Rise ES	Does Not Meet Standard	20	9	0	0	0	11	5	1	4	1

2022-23 SPCSA ACADEMIC PERFORMANCE FRAMEWORK RESULTS

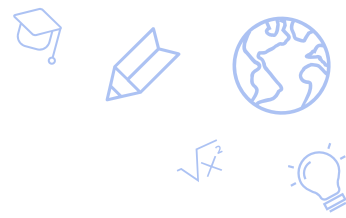


School Name	Framework Rating	Framework Total Pts	NSPF Pts (60)	Comparison Total Pts (25)	Comparison District Pts (10)	Comparison School Pts (15)	Enrollment Total Pts (15)	FRL Pts (5)	IEP Pts (5)	EL Pts (5)	Enrollment Bonus Pts
Oasis Acad ES	Meets Standard	75.8	43.8	25	10	15	7	2	1	4	0
Oasis Acad MS	Exceeds Standard	85.9	51.9	25	10	15	9	1	3	4	1
Oasis Acad HS	Exceeds Standard	89.6	55.6	25	10	15	9	2	2	4	1
pilotED Cactus Park ES	Not Rated	N/A	N/A	N/A	N/A	N/A	13	5	3	5	0
Pinecrest Cadence ES	Exceeds Standard	88.1	53.1	25	10	15	10	2	5	2	1
Pinecrest Cadence MS	Meets Standard	74.6	39.6	25	10	15	10	2	5	2	1
Pinecrest Cadence HS	Exceeds Standard	86.6	53.6	25	10	15	8	1	5	2	0
Pinecrest Horizon ES	Exceeds Standard	89.2	55.2	25	10	11	9	2	4	2	1
Pinecrest Inspirada ES	Meets Standard	68.3	48.3	15	10	2	5	0	3	1	1
Pinecrest Inspirada MS	Exceeds Standard	89	57	25	10	15	7	0	4	2	1
Pinecrest North NV ES	Exceeds Standard	80.2	49.2	25	10	15	6	1	4	1	0
Pinecrest North NV MS	Exceeds Standard	85.3	51.3	25	10	15	9	1	3	3	2
Pinecrest Sloan Canyon ES	Exceeds Standard	83.3	51.3	25	10	5	7	1	4	1	1
Pinecrest Sloan Canyon MS	Meets Standard	66.6	44.6	15	10	5	7	1	3	2	1
Pinecrest Sloan Canyon HS	Not Rated	N/A	N/A	N/A	N/A	N/A	7	1	4	2	0
Pinecrest St Rose ES	Exceeds Standard	84.6	54.6	25	10	15	5	2	2	1	0
Pinecrest St Rose MS	Exceeds Standard	90.6	57.6	25	10	15	8	2	3	2	1
Pinecrest Virtual MS	Does Not Meet Standard	29.6	19.6	2	0	2	8	2	4	2	0
Pinecrest Virtual HS	Not Rated	N/A	N/A	N/A	N/A	N/A	8	1	5	2	0
Quest Northwest ES	Does Not Meet Standard	21.1	11.1	0	0	0	10	5	2	3	0
Quest Northwest MS	Meets Standard	71	42	19	10	9	10	5	2	3	0
Sage Collegiate ES	Meets Standard	60.6	29.6	20	5	15	11	5	3	3	0
Signature Prep ES	Meets Standard	54.1	26.1	18	3	15	10	4	3	3	0
Signature Prep MS	Does Not Meet Standard	46.6	24.6	8	2	6	14	4	5	4	1
Silver Sands ES	Below Standard	13.2	5.2	0	0	0	8	2	4	2	0
Silver Sands MS	Meets Standard	65.9	34.9	22	7	15	9	2	3	3	1
SLAM Acad ES	Does Not Meet Standard	26	12	0	0	0	14	5	3	4	2
SLAM Acad MS	Meets Standard	67.5	31.5	21	6	15	15	5	4	4	2
SLAM Acad HS	Meets Standard	74.5	43.5	16	6	10	15	5	5	4	1
Somerset Aliante ES	Meets Standard	57.6	33.6	17	7	10	7	1	5	1	0
Somerset Aliante MS	Meets Standard	78.6	45.6	25	10	15	8	1	5	2	0

2022-23 SPCSA ACADEMIC PERFORMANCE FRAMEWORK RESULTS



School Name	Framework Rating	Framework Total Pts	NSPF Pts (60)	Comparison Total Pts (25)	Comparison District Pts (10)	Comparison School Pts (15)	Enrollment Total Pts (15)	FRL Pts (5)	IEP Pts (5)	EL Pts (5)	Enrollment Bonus Pts
Somerset Lone Mtn ES	Exceeds Standard	86.3	51.3	25	10	15	10	2	5	2	1
Somerset Lone Mtn MS	Meets Standard	67.7	41.7	18	10	8	8	1	5	2	0
Somerset Losee ES	Meets Standard	61.8	31.8	21	6	15	9	3	3	3	0
Somerset Losee MS	Meets Standard	54.7	26.7	18	3	15	10	3	4	3	0
Somerset Losee HS	Meets Standard	58.2	34.2	13	1	12	11	3	5	3	0
Somerset North Las Vegas ES	Does Not Meet Standard	30.7	14.7	7	0	7	9	3	4	2	0
Somerset Sky Pointe ES	Exceeds Standard	85	54	25	10	15	6	1	3	1	1
Somerset Sky Pointe MS	Exceeds Standard	91.6	58.6	25	10	15	8	1	4	2	1
Somerset Sky Pointe HS	Meets Standard	55.5	40.5	7	4	3	8	1	5	2	0
Somerset Skye Canyon ES	Exceeds Standard	85.6	54.6	25	10	15	6	1	4	1	0
Somerset Skye Canyon MS	Exceeds Standard	88.6	56.6	25	10	15	7	1	4	2	0
Somerset Stephanie ES	Meets Standard	65.3	39.3	17	10	7	9	2	4	2	1
Somerset Stephanie MS	Exceeds Standard	86.3	51.3	25	10	15	10	2	5	3	0
Strong Start ES	Not Rated	N/A	N/A	N/A	N/A	N/A	13	5	3	5	0
TEACH LV ES	Below Standard	19.6	6.6	0	0	0	13	5	3	4	1
TEACH LV MS	Does Not Meet Standard	20.6	6.6	0	0	0	14	3	5	5	1
Young Women's Leadership Acad MS	Does Not Meet Standard	38.6	20.6	5	0	5	13	5	3	5	0
Young Women's Leadership Acad HS	Not Rated	N/A	N/A	N/A	N/A	N/A	12	5	5	2	0



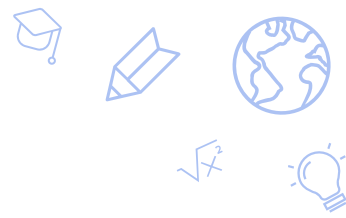
2022-23 Nevada School Performance Framework (NSPF) Versus 2022-23 SPCSA Academic Performance Framework

2022-23 NSPF vs. SPCSA Academic Performance Framework Ratings



NSPF Star Rating	Academic Framework Rating	School Count
1	BELOW STANDARD	5
	DOES NOT MEET STANDARD	7
2	DOES NOT MEET STANDARD	19
	MEETS STANDARD	5
3	DOES NOT MEET STANDARD	2
	MEETS STANDARD	33
4	MEETS STANDARD	16
	EXCEEDS STANDARD	4
5	MEETS STANDARD	1
	EXCEEDS STANDARD	42
NOT RATED	NOT RATED	8

Data exclude schools that did not receive a rating. One “school” may contain multiple levels (elementary, middle, high).



Historical SPCSA School Performance on Nevada School Performance Framework (NSPF) and SPCSA Academic Performance Framework

SPCSA SCHOOLS – HISTORICAL ACADEMIC PERFORMANCE



School Name	2018-19 NSPF Index Score	2018-19 NSPF Star Rating	2021-22 NSPF Index Score	2021-22 SPCSA Academic Framework Score	2021-22 SPCSA Academic Framework Rating	2022-23 NSPF Index Score	2022-23 NSPF Star Rating	2022-23 SPCSA Academic Framework Score	2022-23 SPCSA Academic Framework Rating
Alpine Acad HS	66.1	3	63.8	51.2	Meets Standard	65.0	3	61.0	Meets Standard
Amplus Durango ES	46.0	2	76.5	77.9	Meets Standard	83.5	4	82.1	Exceeds Standard
Amplus Durango MS	83.8	5	87.0	86.2	Exceeds Standard	64.5	3	70.7	Meets Standard
Amplus Durango HS	45.0	2	80.5	79.3	Meets Standard	93.0	5	89.8	Exceeds Standard
Amplus Rainbow ES	Not Open	Not Open	82.0	84.2	Exceeds Standard	88.0	5	85.8	Exceeds Standard
Battle Born ES	Not Open	Not Open	Not Open	Not Open	Not Open	24.2	1	33.5	Does Not Meet Standard
Battle Born MS	Not Open	Not Open	Not Open	Not Open	Not Open	51.1	3	65.6	Meets Standard
Beacon Acad HS	10.5	1	3.7	17.2	Below Standard	4.4	1	17.6	Below Standard
CASLV Cadence ES	Not Open	Not Open	Not Open	Not Open	Not Open	44.0	2	50.4	Meets Standard
CASLV Cadence MS	Not Open	Not Open	Not Open	Not Open	Not Open	75.5	4	78.3	Meets Standard
CASLV Centennial ES	67.5	4	95.5	87.3	Exceeds Standard	97.7	5	89.6	Exceeds Standard
CASLV Centennial MS	87.3	5	94.4	88.6	Exceeds Standard	80.0	5	79.0	Meets Standard
CASLV Eastgate ES	73.0	4	87.0	84.2	Exceeds Standard	78.5	4	78.1	Meets Standard
CASLV Eastgate MS	95.4	5	92.5	92.5	Exceeds Standard	88.5	5	89.1	Exceeds Standard
CASLV Nellis AFB ES	48.3	2	43.8	37.2	Does Not Meet Standard	39.4	2	48.6	Does Not Meet Standard
CASLV Nellis AFB MS	97.7	5	68.3	73.9	Meets Standard	66.1	3	71.6	Meets Standard
CASLV Sandy Ridge MS	83.3	5	67.7	55.6	Meets Standard	65.0	3	57.0	Meets Standard
CASLV Sandy Ridge HS	97.7	5	95.0	88.0	Exceeds Standard	91.5	5	84.9	Exceeds Standard
CASLV Tamarus ES	100.0	Not Rated	99.0	91.4	Exceeds Standard	87.0	5	83.2	Exceeds Standard
CASLV Windmill ES	78.2	4	92.3	89.3	Exceeds Standard	83.5	4	79.1	Meets Standard
CASLV Windmill MS	96.5	5	89.6	87.7	Exceeds Standard	93.1	5	84.8	Exceeds Standard
CIVICA ES	Not Open	Not Open	26.5	27.9	Does Not Meet Standard	27.5	2	32.5	Does Not Meet Standard
CIVICA MS	Not Open	Not Open	54.6	66.7	Meets Standard	35.0	2	43.0	Does Not Meet Standard
Democracy Prep ES	41.0	2	46.5	53.9	Meets Standard	35.0	2	44.0	Does Not Meet Standard
Democracy Prep MS	82.5	5	57.5	69.5	Meets Standard	57.0	3	69.2	Meets Standard
Democracy Prep HS	26.1	Not Rated	45.2	39.1	Does Not Meet Standard	57.0	3	53.2	Meets Standard
Discovery Hillpointe ES	76.6	4	76.6	69.9	Meets Standard	42.5	2	36.5	Does Not Meet Standard
Discovery Hillpointe MS	70.5	4	73.8	75.2	Meets Standard	47.5	2	41.5	Does Not Meet Standard
Discovery Sandhill ES	27.7	2	37.0	33.2	Does Not Meet Standard	40.0	2	47.0	Does Not Meet Standard
Doral Cactus ES	98.0	5	89.5	85.7	Exceeds Standard	81.0	4	76.6	Meets Standard

SPCSA SCHOOLS – HISTORICAL ACADEMIC PERFORMANCE



School Name	2018-19 NSPF Index Score	2018-19 NSPF Star Rating	2021-22 NSPF Index Score	2021-22 SPCSA Academic Framework Score	2021-22 SPCSA Academic Framework Rating	2022-23 NSPF Index Score	2022-23 NSPF Star Rating	2022-23 SPCSA Academic Framework Score	2022-23 SPCSA Academic Framework Rating
Doral Cactus MS	96.6	5	96.1	87.6	Exceeds Standard	94.4	5	86.6	Exceeds Standard
Doral Fire Mesa ES	84.0	5	61.0	64.6	Meets Standard	43.0	2	42.8	Does Not Meet Standard
Doral Fire Mesa MS	81.1	5	82.2	84.3	Exceeds Standard	70.0	4	73.0	Meets Standard
Doral North NV ES	97.7	5	86.1	82.6	Exceeds Standard	87.2	5	81.3	Exceeds Standard
Doral North NV MS	82.1	5	93.3	88.9	Exceeds Standard	87.7	5	84.6	Exceeds Standard
Doral Pebble ES	87.5	5	87.5	83.5	Exceeds Standard	65.0	3	70.0	Meets Standard
Doral Pebble MS	92.7	5	89.4	83.6	Exceeds Standard	87.5	5	84.5	Exceeds Standard
Doral Red Rock ES	95.0	5	89.0	86.4	Exceeds Standard	95.0	5	88.0	Exceeds Standard
Doral Red Rock MS	70.5	4	90.0	86.0	Exceeds Standard	80.0	5	80.0	Exceeds Standard
Doral Red Rock HS	71.4	Not Rated	76.0	70.6	Meets Standard	78.5	4	71.1	Meets Standard
Doral Saddle ES	78.0	4	84.5	82.7	Exceeds Standard	85.5	5	82.3	Exceeds Standard
Doral Saddle MS	81.6	5	85.5	83.3	Exceeds Standard	78.8	4	74.2	Meets Standard
Elko Inst for Acad Achvmt ES	31.1	2	78.3	84.9	Exceeds Standard	86.1	5	88.6	Exceeds Standard
Elko Inst for Acad Achvmt MS	84.4	5	93.8	96.2	Exceeds Standard	94.4	5	95.6	Exceeds Standard
Equipo Acad MS	83.0	5	68.5	79.1	Meets Standard	34.0	2	41.4	Does Not Meet Standard
Equipo Acad HS	77.8	4	69.5	75.7	Meets Standard	77.0	4	81.2	Exceeds Standard
Explore Acad MS	Not Open	Not Open	18.8	31.2	Does Not Meet Standard	11.1	1	18.6	Below Standard
Explore Acad HS	Not Open	Not Open	N/A	N/A	Not Rated	20.0	Not Rated	N/A	Not Rated
Founders Acad ES	68.5	4	55.0	56.0	Meets Standard	61.0	3	69.6	Meets Standard
Founders Acad MS	81.6	5	63.8	66.2	Meets Standard	90.0	5	85.0	Exceeds Standard
Founders Acad HS	53.1	3	68.8	64.2	Meets Standard	72.2	4	69.3	Meets Standard
Freedom Classical Acad ES	41.0	2	35.0	35.0	Does Not Meet Standard	34.0	2	39.4	Does Not Meet Standard
Freedom Classical Acad MS	72.0	4	70.0	80.0	Exceeds Standard	74.5	4	81.7	Exceeds Standard
Futuro Acad ES	22.5	Not Rated	20.0	25.0	Does Not Meet Standard	57.5	3	69.5	Meets Standard
GEMS MS	Not Open	Not Open	47.5	58.5	Meets Standard	33.0	2	39.8	Does Not Meet Standard
Honors Acad ES	50.0	3	38.8	30.2	Does Not Meet Standard	23.3	1	19.9	Below Standard
Honors Acad MS	81.1	5	45.0	39.0	Does Not Meet Standard	60.5	3	65.3	Meets Standard
Imagine Mtn View ES	56.5	3	67.7	73.6	Meets Standard	26.5	1	25.9	Does Not Meet Standard
Imagine Mtn View MS	76.4	4	81.6	83.9	Exceeds Standard	59.7	3	71.8	Meets Standard
Leadership Acad MS	69.4	3	75.5	79.3	Meets Standard	65.0	3	63.0	Meets Standard

SPCSA SCHOOLS – HISTORICAL ACADEMIC PERFORMANCE



School Name	2018-19 NSPF Index Score	2018-19 NSPF Star Rating	2021-22 NSPF Index Score	2021-22 SPCSA Academic Framework Score	2021-22 SPCSA Academic Framework Rating	2022-23 NSPF Index Score	2022-23 NSPF Star Rating	2022-23 SPCSA Academic Framework Score	2022-23 SPCSA Academic Framework Rating
Leadership Acad HS	62.2	3	81.6	74.9	Meets Standard	73.3	4	67.9	Meets Standard
Learning Bridge ES	74.4	4	16.1	19.6	Below Standard	38.8	2	44.2	Does Not Meet Standard
Learning Bridge MS	93.3	5	63.3	50.9	Meets Standard	81.1	5	80.6	Exceeds Standard
Legacy Cadence ES	48.0	2	23.5	22.1	Does Not Meet Standard	41.0	2	47.6	Does Not Meet Standard
Legacy Cadence MS	82.0	5	59.5	60.7	Meets Standard	46.5	2	49.9	Does Not Meet Standard
Legacy N Valley ES	46.5	2	34.5	29.7	Does Not Meet Standard	34.0	2	39.4	Does Not Meet Standard
Legacy N Valley MS	60.0	3	51.5	59.9	Meets Standard	54.0	3	62.4	Meets Standard
Legacy Southwest ES	Not Open	Not Open	69.5	62.7	Meets Standard	59.5	3	49.7	Does Not Meet Standard
Legacy Southwest MS	Not Open	Not Open	73.0	65.8	Meets Standard	72.5	4	65.5	Meets Standard
Mater Bonanza ES	52.0	3	48.5	59.1	Meets Standard	54.0	3	66.4	Meets Standard
Mater Bonanza MS	78.3	4	47.0	60.2	Meets Standard	52.5	3	66.5	Meets Standard
Mater East Las Vegas ES	Not Open	Not Open	26.5	30.9	Does Not Meet Standard	41.0	2	52.6	Meets Standard
Mater East Las Vegas MS	Not Open	Not Open	46.0	58.6	Meets Standard	50.5	3	63.3	Meets Standard
Mater East Las Vegas HS	Not Open	Not Open	N/A	N/A	Not Rated	40.0	Not Rated	N/A	Not Rated
Mater Mtn Vista ES	80.5	4	61.0	72.6	Meets Standard	64.5	3	77.7	Meets Standard
Mater Mtn Vista MS	91.5	5	85.5	89.3	Exceeds Standard	64.5	3	74.7	Meets Standard
Mater North NV ES	63.0	3	64.0	74.4	Meets Standard	65.0	3	78.0	Meets Standard
Mater North NV MS	85.6	5	55.5	66.3	Meets Standard	57.0	3	71.2	Meets Standard
Nevada Virtual MS	61.5	3	42.0	37.2	Does Not Meet Standard	33.0	2	30.8	Does Not Meet Standard
Nevada Virtual HS	53.0	3	53.5	44.1	Does Not Meet Standard	61.0	3	54.6	Meets Standard
NSHS Downtown HS	88.0	5	80.6	75.3	Meets Standard	85.0	5	89.0	Exceeds Standard
NSHS Dtnw Henderson HS	Not Open	Not Open	100.0	89.0	Exceeds Standard	100.0	5	90.0	Exceeds Standard
NSHS Henderson HS	98.7	5	96.8	90.0	Exceeds Standard	100.0	5	89.0	Exceeds Standard
NSHS Meadowood HS	88.0	Not Rated	94.3	86.5	Exceeds Standard	100.0	5	89.0	Exceeds Standard
NSHS North Las Vegas HS	Not Open	Not Open	Not Open	Not Open	Not Open	71.1	Not Rated	N/A	Not Rated
NSHS Northwest HS	Not Open	Not Open	99.3	89.5	Exceeds Standard	100.0	5	90.0	Exceeds Standard
NSHS Southwest HS	Not Open	Not Open	100.0	93.0	Exceeds Standard	96.2	5	89.7	Exceeds Standard
NSHS Summerlin HS	93.1	5	90.6	86.3	Exceeds Standard	100.0	5	92.0	Exceeds Standard
NSHS Sunrise HS	Not Open	Not Open	93.1	89.8	Exceeds Standard	91.2	5	88.7	Exceeds Standard
NV Connections Acad HS	13.8	1	70.0	68.0	Meets Standard	56.0	3	45.6	Does Not Meet Standard

SPCSA SCHOOLS – HISTORICAL ACADEMIC PERFORMANCE

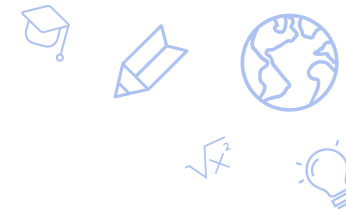


School Name	2018-19 NSPF Index Score	2018-19 NSPF Star Rating	2021-22 NSPF Index Score	2021-22 SPCSA Academic Framework Score	2021-22 SPCSA Academic Framework Rating	2022-23 NSPF Index Score	2022-23 NSPF Star Rating	2022-23 SPCSA Academic Framework Score	2022-23 SPCSA Academic Framework Rating
NV Prep ES	40.0	2	12.2	19.3	Below Standard	50.5	3	65.3	Meets Standard
NV Prep MS	89.6	5	74.4	84.6	Exceeds Standard	56.0	3	70.6	Meets Standard
NV Rise ES	0	Not Rated	20.0	22.0	Does Not Meet Standard	15.0	1	20.0	Does Not Meet Standard
Oasis Acad ES	86.6	5	75.0	79.0	Meets Standard	73.0	4	75.8	Meets Standard
Oasis Acad MS	97.7	5	81.6	82.9	Exceeds Standard	86.6	5	85.9	Exceeds Standard
Oasis Acad HS	96.6	5	95.0	92.0	Exceeds Standard	92.7	5	89.6	Exceeds Standard
pilotED Cactus Park ES	Not Open	Not Open	Not Open	Not Open	Not Open	5.7	Not Rated	N/A	Not Rated
Pinecrest Cadence ES	68.5	4	83.0	82.8	Exceeds Standard	88.5	5	88.1	Exceeds Standard
Pinecrest Cadence MS	92.2	5	71.0	77.6	Meets Standard	66.0	3	74.6	Meets Standard
Pinecrest Cadence HS	78.5	Not Rated	87.2	85.3	Exceeds Standard	89.4	5	86.6	Exceeds Standard
Pinecrest Horizon ES	83.3	4	80.5	71.3	Meets Standard	92.0	5	89.2	Exceeds Standard
Pinecrest Inspirada ES	94.4	5	92.7	85.6	Exceeds Standard	80.5	4	68.3	Meets Standard
Pinecrest Inspirada MS	100.0	5	97.2	90.3	Exceeds Standard	95.0	5	89.0	Exceeds Standard
Pinecrest North NV ES	Not Open	Not Open	79.0	77.4	Meets Standard	82.0	4	80.2	Exceeds Standard
Pinecrest North NV MS	Not Open	Not Open	71.6	66.9	Meets Standard	85.5	5	85.3	Exceeds Standard
Pinecrest Sloan Canyon ES	Not Open	Not Open	92.5	86.5	Exceeds Standard	85.5	5	83.3	Exceeds Standard
Pinecrest Sloan Canyon MS	Not Open	Not Open	84.4	81.6	Exceeds Standard	74.4	4	66.6	Meets Standard
Pinecrest Sloan Canyon HS	Not Open	Not Open	N/A	N/A	Not Rated	89.2	Not Rated	N/A	Not Rated
Pinecrest St Rose ES	80.0	4	83.5	81.1	Exceeds Standard	91.0	5	84.6	Exceeds Standard
Pinecrest St Rose MS	96.6	5	94.4	88.6	Exceeds Standard	96.1	5	90.6	Exceeds Standard
Pinecrest Virtual MS	Not Open	Not Open	Not Open	Not Open	Not Open	32.7	2	29.6	Does Not Meet Standard
Pinecrest Virtual HS	Not Open	Not Open	Not Open	Not Open	Not Open	15.0	Not Rated	N/A	Not Rated
Quest Northwest ES	42.0	2	57.5	52.5	Meets Standard	18.5	1	21.1	Does Not Meet Standard
Quest Northwest MS	52.7	3	52.2	53.3	Meets Standard	70.0	4	71.0	Meets Standard
Sage Collegiate ES	Not Open	Not Open	Not Open	Not Open	Not Open	49.4	2	60.6	Meets Standard
Signature Prep ES	Not Open	Not Open	37.5	38.5	Does Not Meet Standard	43.5	2	54.1	Meets Standard
Signature Prep MS	Not Open	Not Open	57.2	63.3	Meets Standard	41.0	2	46.6	Does Not Meet Standard
Silver Sands ES	59.4	3	53.0	49.8	Does Not Meet Standard	8.8	1	13.2	Below Standard
Silver Sands MS	96.1	5	56.1	61.6	Meets Standard	58.3	3	65.9	Meets Standard
SLAM Acad ES	Not Open	Not Open	60.0	60.0	Meets Standard	20.0	1	26.0	Does Not Meet Standard

SPCSA SCHOOLS – HISTORICAL ACADEMIC PERFORMANCE



School Name	2018-19 NSPF Index Score	2018-19 NSPF Star Rating	2021-22 NSPF Index Score	2021-22 SPCSA Academic Framework Score	2021-22 SPCSA Academic Framework Rating	2022-23 NSPF Index Score	2022-23 NSPF Star Rating	2022-23 SPCSA Academic Framework Score	2022-23 SPCSA Academic Framework Rating
SLAM Acad MS	68.0	3	57.5	66.5	Meets Standard	52.5	3	67.5	Meets Standard
SLAM Acad HS	70.0	Not Rated	73.5	73.1	Meets Standard	72.5	4	74.5	Meets Standard
Somerset Aliante ES	49.0	2	63.0	57.8	Meets Standard	56.0	3	57.6	Meets Standard
Somerset Aliante MS	82.7	5	80.0	81.0	Exceeds Standard	76.0	4	78.6	Meets Standard
Somerset Lone Mtn ES	90.5	5	79.0	80.4	Exceeds Standard	85.5	5	86.3	Exceeds Standard
Somerset Lone Mtn MS	96.6	5	73.5	78.1	Meets Standard	69.5	3	67.7	Meets Standard
Somerset Losee ES	35.5	2	51.0	58.6	Meets Standard	53.0	3	61.8	Meets Standard
Somerset Losee MS	35.5	2	52.0	60.2	Meets Standard	44.5	2	54.7	Meets Standard
Somerset Losee HS	29.4	2	49.0	47.4	Does Not Meet Standard	57.0	3	58.2	Meets Standard
Somerset North Las Vegas ES	43.5	2	50.5	58.3	Meets Standard	24.5	1	30.7	Does Not Meet Standard
Somerset Sky Pointe ES	98.8	5	85.5	83.3	Exceeds Standard	90.0	5	85.0	Exceeds Standard
Somerset Sky Pointe MS	88.8	5	92.2	88.3	Exceeds Standard	97.7	5	91.6	Exceeds Standard
Somerset Sky Pointe HS	48.8	2	66.5	53.9	Meets Standard	67.5	3	55.5	Meets Standard
Somerset Skye Canyon ES	92.2	5	93.0	86.8	Exceeds Standard	91.0	5	85.6	Exceeds Standard
Somerset Skye Canyon MS	91.1	5	92.2	88.3	Exceeds Standard	94.4	5	88.6	Exceeds Standard
Somerset Stephanie ES	89.0	5	48.0	39.8	Does Not Meet Standard	65.5	3	65.3	Meets Standard
Somerset Stephanie MS	86.1	5	72.5	78.5	Meets Standard	85.5	5	86.3	Exceeds Standard
Strong Start Acad ES	Not Open	Not Open	Not Open	Not Open	Not Open	95.0	Not Rated	N/A	Not Rated
TEACH LV ES	Not Open	Not Open	N/A	N/A	Not Rated	11.0	1	19.6	Below Standard
TEACH LV MS	Not Open	Not Open	62.6	69.5	Meets Standard	11.0	1	20.6	Does Not Meet Standard
Young Women's Leadership Acad MS	Not Open	Not Open	Not Open	Not Open	Not Open	34.4	2	38.6	Does Not Meet Standard
Young Women's Leadership Acad HS	Not Open	Not Open	Not Open	Not Open	Not Open	55.0	Not Rated	N/A	Not Rated



2022-23 ELA, Math, and Science Proficiency



Proficiency Findings

- Smarter Balanced ELA, Math, and Science
 - All SPCSA student groups (7 race/ethnicity, EL, IEP, FRL) outperformed the state in 2022-23.
 - From 2021-22 to 2022-23:
 - ELA proficiency decreased for most SPCSA student groups.
 - Math proficiency increased for all SPCSA student groups.
 - Science proficiency increased for some SPCSA student groups and decreased for others.
- ACT Math/ELA and HS Science
 - Most SPCSA student groups outperformed the state in 2022-23.
 - From 2021-22 to 2022-23:
 - ELA and Math proficiency increased for some SPCSA student groups and decreased for others.
 - HS Science proficiency mostly decreased for SPCSA student groups.

SBAC Proficiency

State vs SPCSA proficiency trends

By race/ethnicity

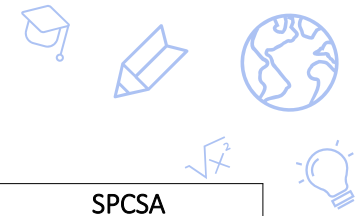
2018-19 to 2022-23

- Indicates SPCSA rate \geq State rate
- Indicates SPCSA rate $<$ State rate

Year	Group	STATE ELA % Proficient	SPCSA ELA % Proficient	STATE Math % Proficient	SPCSA Math % Proficient
2018-2019	Overall	48.5	60.0	37.5	48.4
2020-2021	Overall	41.4	53.2	26.3	36.4
2021-2022	Overall	43.7	56.1	29.8	42.2
2022-2023	Overall	41.0	53.3	31.3	44.3
2018-2019	Am In/AK Native	32.5	63.3	21.3	35.6
2020-2021	Am In/AK Native	25.8	46.1	12.2	25.0
2021-2022	Am In/AK Native	28.1	50.4	15.7	33.6
2022-2023	Am In/AK Native	23.9	44.4	16.3	34.2
2018-2019	Asian	70.8	78.2	64.4	70.9
2020-2021	Asian	65.4	73.1	51.4	59.9
2021-2022	Asian	69.1	76.8	56.4	67.3
2022-2023	Asian	66.1	73.8	59.3	68.1
2018-2019	Black	30.2	40.6	18.8	27.5
2020-2021	Black	25.3	37.2	10.8	18.0
2021-2022	Black	27.1	40.1	13.5	23.3
2022-2023	Black	25.6	36.6	14.8	24.3
2018-2019	Hispanic	40.6	50.8	29.0	37.8
2020-2021	Hispanic	31.3	42.6	16.7	25.6
2021-2022	Hispanic	35.5	46.5	21.1	31.5
2022-2023	Hispanic	32.9	44.7	22.4	34.2
2018-2019	Pacific Islander	47.9	57.2	37.6	46.7
2020-2021	Pacific Islander	37.8	52.1	22.8	35.3
2021-2022	Pacific Islander	38.6	53.6	24.6	37.1
2022-2023	Pacific Islander	36.4	47.7	28.1	41.9
2018-2019	Two or More Races	56.6	65.2	44.1	53.2
2020-2021	Two or More Races	49.9	60.3	32.8	43.6
2021-2022	Two or More Races	51.8	62.8	36.8	48.8
2022-2023	Two or More Races	50.1	59.8	39.1	50.7
2018-2019	White	61.0	67.4	50.8	56.9
2020-2021	White	53.8	62.7	38.2	46.2
2021-2022	White	56.7	66.1	43.6	53.6
2022-2023	White	53.7	63.8	45.2	57.0

Data retrieved from the [Nevada Accountability Portal](#), which uses slightly different rules from the NSPF. Data displayed include the four most recent available years.

SBAC Proficiency



State vs SPCSA proficiency trends

ELL/FRL/IEP student groups

2019-20 to 2022-23

 Indicates SPCSA rate \geq State rate

 Indicates SPCSA rate $<$ State rate

Year	Group	STATE ELA - % Proficient	SPCSA ELA - % Proficient	STATE Math - % Proficient	SPCSA Math - % Proficient
2018-2019	Overall	48.5	60.0	37.5	48.4
2020-2021	Overall	41.4	53.2	26.3	36.4
2021-2022	Overall	43.7	56.1	29.8	42.2
2022-2023	Overall	41.0	53.3	31.3	44.3
2018-2019	EL	15.8	26.1	14.6	23.6
2020-2021	EL	8.3	16.0	6.1	13.4
2021-2022	EL	12.8	21.1	9.8	17.6
2022-2023	EL	12.0	18.9	10.9	18.8
2018-2019	FRL	39.3	46.1	28.4	34.0
2020-2021	FRL	32.5	39.8	18.1	23.1
2021-2022	FRL	31.8	44.2	18.8	29.1
2022-2023	FRL	30.1	40.9	20.7	31.1
2018-2019	IEP	13.4	23.6	10.8	19.8
2020-2021	IEP	12.9	20.5	8.5	13.6
2021-2022	IEP	14.0	22.0	10.5	17.8
2022-2023	IEP	13.9	22.5	11.5	20.4

Science 5/8 Proficiency



State vs SPCSA proficiency trends

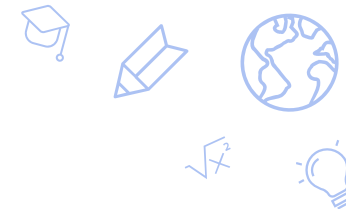
By race/ethnicity

2018-19 to 2022-23

Year	Group	STATE Science % Proficient	SPCSA Science % Proficient
2018-2019	Overall	30.5	39.6
2020-2021	Overall	25.8	36.3
2021-2022	Overall	27.2	37.8
2022-2023	Overall	26.0	36.3
2018-2019	Am In/AK Native	19.2	29.0
2020-2021	Am In/AK Native	13.3	30.0
2021-2022	Am In/AK Native	16.9	35.1
2022-2023	Am In/AK Native	16.8	32.6
2018-2019	Asian	52.0	55.0
2020-2021	Asian	44.0	51.8
2021-2022	Asian	47.9	58.1
2022-2023	Asian	47.8	56.9
2018-2019	Black	13.4	19.9
2020-2021	Black	11.4	20.4
2021-2022	Black	12.4	23.5
2022-2023	Black	11.6	19.7
2018-2019	Hispanic	21.5	30.4
2020-2021	Hispanic	17.0	27.1
2021-2022	Hispanic	18.7	26.7
2022-2023	Hispanic	18.2	26.9
2018-2019	Pacific Islander	24.5	31.1
2020-2021	Pacific Islander	20.9	40.4
2021-2022	Pacific Islander	20.8	34.8
2022-2023	Pacific Islander	19.7	25.8
2018-2019	Two or More Races	36.9	44.0
2020-2021	Two or More Races	32.1	41.4
2021-2022	Two or More Races	34.0	44.0
2022-2023	Two or More Races	31.6	41.5
2018-2019	White	44.8	48.5
2020-2021	White	37.4	45.4
2021-2022	White	41.2	49.2
2022-2023	White	39.1	48.5

 Indicates SPCSA rate ≥ State rate

 Indicates SPCSA rate < State rate



Science 5/8 Proficiency

State vs SPCSA proficiency trends

ELL/FRL/IEP student groups

2019-20 to 2022-23

 Indicates SPCSA rate \geq State rate

 Indicates SPCSA rate $<$ State rate

Year	Group	STATE Science % Proficient	SPCSA Science % Proficient
2018-2019	Overall	30.5	39.6
2020-2021	Overall	25.8	36.3
2021-2022	Overall	27.2	37.8
2022-2023	Overall	26.0	36.3
2018-2019	EL	<5.0	10.0
2020-2021	EL	<5.0	6.3
2021-2022	EL	<5.0	5.1
2022-2023	EL	<5.0	5.7
2018-2019	FRL	21.1	28.8
2020-2021	FRL	18.0	24.8
2021-2022	FRL	16.9	26.0
2022-2023	FRL	16.6	23.9
2018-2019	IEP	7.1	12.6
2020-2021	IEP	6.8	12.4
2021-2022	IEP	7.5	11.7
2022-2023	IEP	7.0	12.9

ACT Proficiency

State vs SPCSA proficiency trends

By race/ethnicity

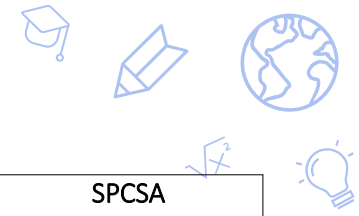
2018-19 to 2022-23

- Indicates SPCSA rate \geq State rate
- Indicates SPCSA rate $<$ State rate

Year	Group	STATE ELA % Proficient	SPCSA ELA % Proficient	STATE Math % Proficient	SPCSA Math % Proficient
2019-2020	Overall	48.8	57.8	25.8	27.1
2020-2021	Overall	46.7	57.5	22.4	27.8
2021-2022	Overall	45.2	53.3	20.5	24.5
2022-2023	Overall	45.9	53.3	19.7	24.8
2019-2020	Am In/AK Native	36.7	<5.0	17.0	<5.0
2020-2021	Am In/AK Native	33.8	<5.0	15.1	<5.0
2021-2022	Am In/AK Native	34.9	<5.0	12.0	<5.0
2022-2023	Am In/AK Native	31.8	63.6	8.8	18.1
2019-2020	Asian	69.7	84.2	49.5	54.2
2020-2021	Asian	69.8	76.1	44.3	52.2
2021-2022	Asian	69.7	79.3	44.0	55.2
2022-2023	Asian	68.7	75.1	41.9	49.6
2019-2020	Black	30.3	38.8	10.0	14.2
2020-2021	Black	28.8	41.2	8.4	12.1
2021-2022	Black	25.8	37.8	6.8	9.6
2022-2023	Black	27.7	33.5	7.3	10.6
2019-2020	Hispanic	37.4	46.3	15.3	16.2
2020-2021	Hispanic	34.4	43.7	12.6	14.3
2021-2022	Hispanic	33.0	41.3	11.4	13.6
2022-2023	Hispanic	34.8	42.9	11.2	15.2
2019-2020	Pacific Islander	45.2	51.4	19.8	<5.0
2020-2021	Pacific Islander	38.8	58.8	18.3	28.6
2021-2022	Pacific Islander	38.3	35.9	14.6	<5.0
2022-2023	Pacific Islander	43.9	55.0	17.7	26.7
2019-2020	Two or More Races	58.0	72.1	31.8	32.4
2020-2021	Two or More Races	54.7	66.2	26.7	35.8
2021-2022	Two or More Races	56.0	58.4	27.6	30.1
2022-2023	Two or More Races	57.5	64.1	25.0	33.8
2019-2020	White	63.9	67.2	38.8	35.0
2020-2021	White	62.1	68.7	34.1	37.4
2021-2022	White	62.0	65.9	31.9	34.0
2022-2023	White	61.4	64.7	31.0	33.2

Data retrieved from the [Nevada Accountability Portal](#), which uses slightly different rules from the NSPF. Data displayed include the four most recent available years.

ACT Proficiency



State vs SPCSA proficiency trends

ELL/FRL/IEP student groups

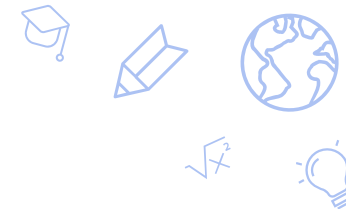
2019-20 to 2022-23

Year	Group	STATE ELA % Proficient	SPCSA ELA % Proficient	STATE Math % Proficient	SPCSA Math % Proficient
2019-2020	Overall	48.8	57.8	25.8	27.1
2020-2021	Overall	46.7	57.5	22.4	27.8
2021-2022	Overall	45.2	53.3	20.5	24.5
2022-2023	Overall	45.9	53.3	19.7	24.8
2019-2020	EL	<5.0	<5.0	<5.0	<5.0
2020-2021	EL	<5.0	<5.0	<5.0	<5.0
2021-2022	EL	<5.0	9.7	<5.0	<5.0
2022-2023	EL	<5.0	6.3	<5.0	<5.0
2019-2020	FRL	37.1	44.2	16.4	15.4
2020-2021	FRL	37.2	44.7	15.2	16.1
2021-2022	FRL	30.7	41.4	10.3	13.4
2022-2023	FRL	31.8	40.7	10.0	13.5
2019-2020	IEP	8.8	19.2	<5.0	<5.0
2020-2021	IEP	7.8	13.1	<5.0	5.5
2021-2022	IEP	8.6	17.3	<5.0	5.7
2022-2023	IEP	10.0	19.6	<5.0	<5.0

 Indicates SPCSA rate ≥ State rate

 Indicates SPCSA rate < State rate

HS Science Proficiency



State vs SPCSA proficiency trends

By race/ethnicity

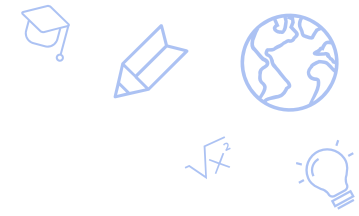
2018-19 to 2022-23

Year	Group	STATE Science % Proficient	SPCSA Science % Proficient
2018-2019	Overall	26.9	30.5
2020-2021	Overall	29.7	34.2
2021-2022	Overall	20.7	27.3
2022-2023	Overall	20.1	23.3
2018-2019	Am In/AK Native	16.4	18.7
2020-2021	Am In/AK Native	17.6	n<10
2021-2022	Am In/AK Native	14.0	10.0
2022-2023	Am In/AK Native	10.3	15.3
2018-2019	Asian	48.9	50.0
2020-2021	Asian	54.6	56.1
2021-2022	Asian	41.2	47.6
2022-2023	Asian	39.5	44.6
2018-2019	Black	11.5	14.9
2020-2021	Black	13.7	16.7
2021-2022	Black	8.7	15.7
2022-2023	Black	8.4	10.7
2018-2019	Hispanic	18.6	22.7
2020-2021	Hispanic	19.9	24.9
2021-2022	Hispanic	13.5	17.2
2022-2023	Hispanic	12.7	15.0
2018-2019	Pacific Islander	20.7	20.0
2020-2021	Pacific Islander	22.3	29.8
2021-2022	Pacific Islander	15.2	24.6
2022-2023	Pacific Islander	13.6	14.5
2018-2019	Two or More Races	31.1	32.7
2020-2021	Two or More Races	35.6	34.8
2021-2022	Two or More Races	25.8	35.7
2022-2023	Two or More Races	25.4	24.0
2018-2019	White	38.7	38.1
2020-2021	White	39.0	44.2
2021-2022	White	31.4	37.9
2022-2023	White	31.7	35.2

Indicates SPCSA rate ≥ State rate

Indicates SPCSA rate < State rate

HS Science Proficiency



State vs SPCSA proficiency trends

ELL/FRL/IEP student groups

2019-20 to 2022-23

Year	Group	STATE Science % Proficient	SPCSA Science % Proficient
2018-2019	Overall	26.9	30.5
2020-2021	Overall	29.7	34.2
2021-2022	Overall	20.7	27.3
2022-2023	Overall	20.1	23.3
2018-2019	EL	<5.0	<5.0
2020-2021	EL	<5.0	6.0
2021-2022	EL	<5.0	<5.0
2022-2023	EL	<5.0	<5.0
2018-2019	FRL	18.4	20.6
2020-2021	FRL	22.0	26.2
2021-2022	FRL	12.8	19.7
2022-2023	FRL	12.2	14.4
2018-2019	IEP	<5.0	12.6
2020-2021	IEP	7.1	11.4
2021-2022	IEP	5.0	10.7
2022-2023	IEP	<5.0	10.1

 Indicates SPCSA rate ≥ State rate

 Indicates SPCSA rate < State rate