



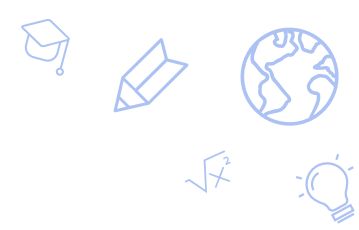
SPCSA

Academic Performance Framework Overview



October 7, 2022

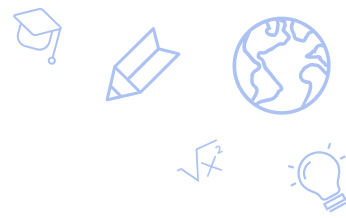




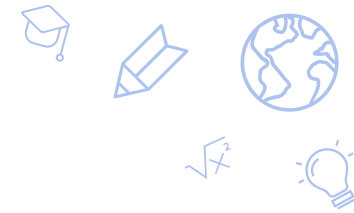
OUTLINE

- Purpose of SPCSA Academic Performance Framework
- History of SPCSA Academic Performance Framework
- Ratings in the SPCSA Academic Performance Framework
- Resources
- Next Steps

Purpose of SPCSA Academic Framework



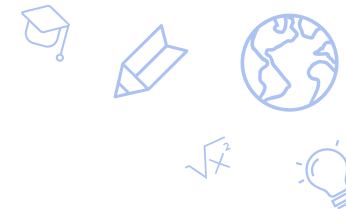
- Nevada Revised Statute ([NRS 388A.273](#)) requires charter school sponsors like the SPCSA to include academic, financial, and organizational performance frameworks in charter contracts.
- Performance frameworks are used by charter school authorizers across the nation to provide charter school boards/leaders and the public with clear expectations, fact-based oversight, information, and timely feedback—all while ensuring charter autonomy.
- The SPCSA Academic Framework:
 - Helps the SPCSA meet the following goals in the 2019-24 SPCSA Strategic Plan:
 - Provide families with access to high-quality schools.
 - Ensure that every SPCSA student succeeds – including those from historically underserved student groups.
 - Increase the diversity of students served by SPCSA schools.
 - Provides additional information (beyond NSPF star ratings, financial data, etc.) that helps inform authorizing decisions.



History of SPCSA Academic Framework

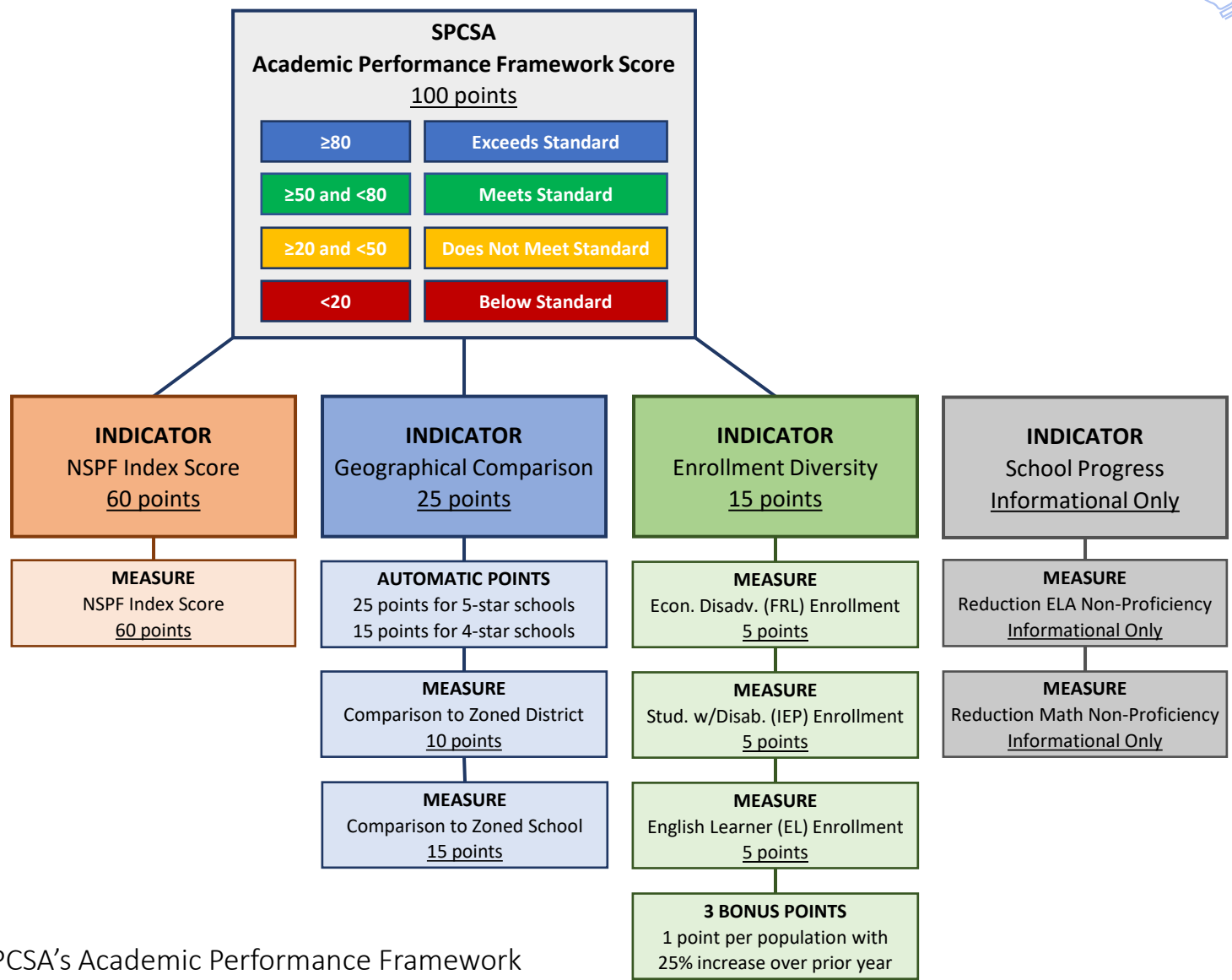
- Designed with significant stakeholder input, including SPCSA charter school leaders, members of the NDE Accountability team, and the SPCSA Authority (Board), including multiple:
 - Listening sessions;
 - Academic Framework Working Group meetings; and
 - Updates to the SPCSA Board on progress.
- History
 - Approved by the SPCSA Board on June 28, 2019.
 - 2018-19 SY: Informational only and released to school leaders in March 2020.
 - 2019-20 SY: Due to COVID-19 and the lack of NSPF star ratings, schools did not receive an overall Framework rating, but data were provided where available.
 - 2020-21 SY: Due to COVID-19 and the lack of NSPF star ratings, schools did not receive an overall Framework rating, but data were provided where available.
 - SPCSA Board revised requirements to receive a Framework rating on June 27, 2022¹.
 - 2021-22 SY: SPCSA will calculate Framework ratings (released in late Oct / early Nov).

¹For more information, see the SPCSA [presentation](#).



Framework Overview

- Schools earn points based on their performance in the measures.
- Points for measures are totaled under indicators, and indicator points are summed to a score from 1 to 100.
- The point total is then tied to one of four performance levels (ratings):
 - Exceeds Standard
 - Meets Standard
 - Does Not Meet Standard
 - Below Standard
- To receive an overall rating, an NSPF star rating is required. In years where NSPF scores are released without star ratings, an NSPF index score that meets NSPF requirements to receive a star rating is required.



The Meadows Charter ES

Address: 10 The Meadows Dr, Las Vegas, NV, 89015

Website: <http://www.themeadowsharterschool.net/>

Oct. 1 2020 Enrollment: 503

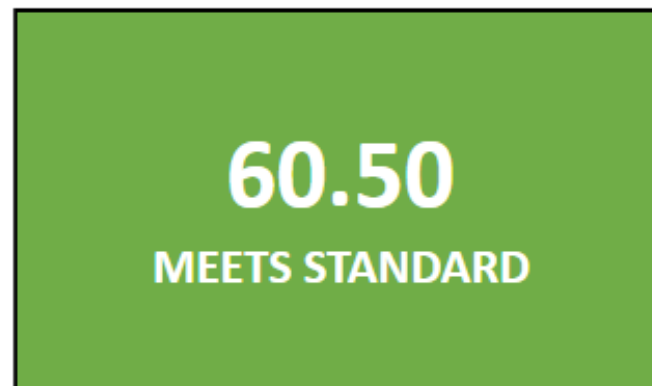
2020-21 Grades Served: K-5

2020-21 NSPF Rating: 4 stars

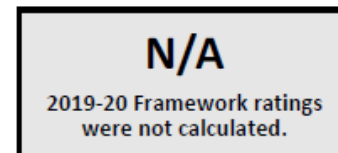
Comparison District: Clark

2019-20 Comparison School: The Springs ES

2020-21



2019-20

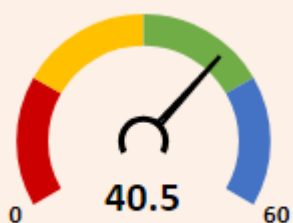


SCORING TABLE

<20 BELOW STANDARD	≥20 and <50 DOES NOT MEET STANDARD	≥50 and <80 MEETS STANDARD	≥80 EXCEEDS STANDARD
--------------------------	--	----------------------------------	----------------------------

NEVADA SCHOOL RATINGS INDICATOR (60 POINTS)

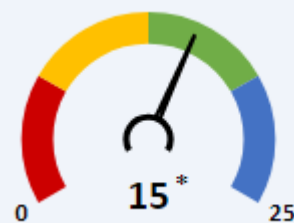
60% of charter school score in Nevada school ratings (NSPF).



NSPF Score: 67.5

GEOGRAPHICAL COMPARISONS INDICATOR (25 POINTS)

Charter school NSPF performance vs. comparison district/school(s).



*Automatic Indicator Points: 15
The charter school's 4-star NSPF rating earned 15 automatic points in this indicator. If comparisons below total >15 points, those are earned instead.

NSPF SCORE VS. COMPARISON DISTRICT (10 POINTS)



CHARTER	DISTRICT	DIFFERENCE
67.5	50.9	▲ 16.6

Comparison district is Clark. District score is average NSPF score for rated Clark ES.

NSPF SCORE VS. COMPARISON SCHOOL (15 POINTS)



CHARTER	COMP. SCHOOL	DIFFERENCE
67.5	63	▲ 4.5

Comparison school is Rhodes ES, the Clark school zoned for charter school address.

ENROLLMENT DIVERSITY INDICATOR (15 POINTS)

Charter school FRL, IEP, and EL enrollment rates vs. comparison district.



^Bonus Indicator Points: 1
One point per group with at least 25% increase over prior year rate.

10/1/20 CHARTER VS DISTRICT K-5 ENROLLMENT RATES (5 POINTS EACH)



GRP.	CHARTER	DISTRICT	DIFF.	BONUS
FRL	≥10 and <20	77.9	▼	✓



IEP	≥15 and <20	13.4	▲	✗
-----	-------------	------	---	---



EL	<5	21.6	▼	✗
----	----	------	---	---

SCHOOL PROGRESS INDICATOR (NO POINTS)

Charter school changes in Math/ELA non-proficiency.

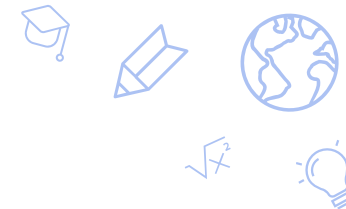
Non-Proficiency Rates (%)

2019-20	2020-21	Change
36.1	41.9	✗ Math Non-Proficiency Increased
30.7	31.1	✗ ELA Non-Proficiency Increased



Where to Find More Information

- The most recent SPCSA Academic Performance Framework [Technical Guide](#) outlines the Framework in detail, including the business rules for all calculations performed.
- The [Performance Framework Reports](#) section of the SPCSA website contains Academic Framework reports for SPCSA schools for the 2019-20 and 2020-21 school years.
- The SPCSA website also provides a [general overview of its Performance Frameworks](#).



Next Steps

- At the next SPCSA board meeting, on November 18, 2022, SPCSA staff will share school-level results for both the 2021-22 school year SPCSA Academic Performance Framework and the Nevada School Performance Framework (NSPF).
- With the results of the SPCSA Academic Performance Framework and the NSPF, staff may recommend board action on November 18, 2022 to:
 - Lift notices due to prior academic performance concerns at schools.
 - Require certain schools to develop remediation plans due to academic performance concerns.

Thank you!

charterschools.nv.gov

