



# **Nevada State Public Charter School Authority**

## **2022 Academic and Demographic Needs Assessment**

*January 28, 2022*

*(Version 1.3)*

*Substantive changes are highlighted in yellow.*

## Contents of the Academic and Demographic Needs Assessment

I. Executive Summary .....	3
II. Introduction to the Academic and Demographic Needs Assessment .....	5
III. Definitions of Academic and Demographic Need .....	6
1. Demographics .....	6
2a. Academic Need: Geographies with 1- and 2-Star Schools (see Appendix B for definitions of Star Ratings) .....	6
2b. Academic Need: Students at Risk of Dropping out of School .....	7
IV. Findings of the Academic and Demographic Needs Assessment .....	8
1. Demographics .....	8
2a. Academic Need: Geographies with 1- and 2-Star Schools .....	10
2b. Academic Need: Students at Risk of Dropping out of School .....	13
V. Implications for SPCSA Authorizing Practices .....	14
VI. Implementation of the Academic and Demographic Needs Assessment .....	16
VII. Conclusion .....	19
VIII. Glossary of Terms .....	20
IX. Appendices .....	21
Appendix A: District Summaries .....	22
Appendix B: Location of Current SPCSA-Sponsored Charter Schools .....	65
Appendix C: Definitions of Star Ratings .....	71
Appendix D: Stakeholder Engagement .....	74

## I. Executive Summary

In 2019, the Nevada State Legislature voted to pass Assembly Bill (AB) 462. In part, this legislation directed the Nevada State Public Charter School Authority (SPCSA) to annually conduct and incorporate the findings of “an evaluation of demographic information of pupils, the academic needs of pupils and the needs of any pupils who are at risk of dropping out of school in this State” into its charter school authorizing decisions—requirements codified in Nevada Revised Statute (NRS) [388A.220](#) and [388A.249](#).

The deadline for the first evaluation was established as July 30, 2019, with a requirement that the evaluation be updated annually by January 31. To this end, the SPCSA conducted an Academic and Demographic Needs Assessment in collaboration with the Nevada Department of Education (NDE) as well as local school districts, and the Authority board approved the first Academic and Demographic Needs Assessment on July 26, 2019. During the fall of 2019, the NDE released updated Nevada School Performance Framework (NSPF) ratings and demographic data, and this information was incorporated into the December 2019 version of the Needs Assessment. Due to the COVID-19 pandemic, the NDE was granted 2019-20 and 2020-21 school year waivers from the U.S. Department of Education for certain school accountability requirements established under the federal Every Student Succeeds Act (ESSA). Accordingly, the NDE did not calculate the annual NSPF school star ratings for either the 2019-20 or 2020-21 school years. Therefore, this January 2022 iteration of the Needs Assessment incorporates the most recent school performance and enrollment data available from the NDE, including the 2018-19 NSPF school year star ratings and the 2021-22 school year enrollment rates.

This document details how the SPCSA has defined academic and demographic need, the findings of the Needs Assessment, the implications of those findings, and examines its implementation.

The SPCSA worked in conjunction with local school districts and the NDE to establish definitions for demographic and academic needs that are transparent, grounded in student and school performance, and aligned to the Department’s school accountability system. While the identified needs remain largely the same, this iteration of the Academic and Demographic Needs Assessment incorporates feedback from the SPCSA’s Community Working Group, representatives of school districts and the Department of Education, and Authority members regarding the definitions of need. Additional feedback may be incorporated in future iterations.

The SPCSA has defined demographic and academic needs as follows, with additional details provided in Section III:

### 1. Demographic Needs

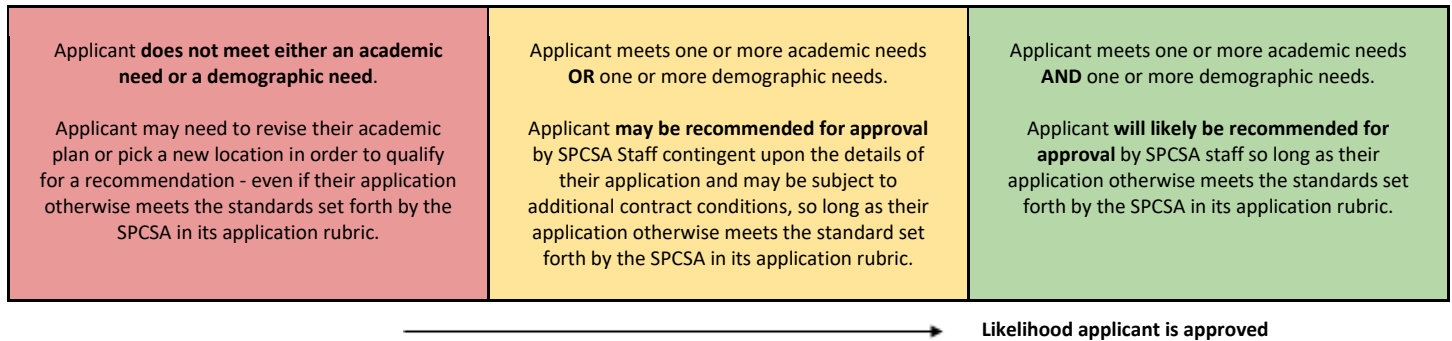
- A. Student groups that consistently underperform on the 3<sup>rd</sup>-8<sup>th</sup> grade Smarter Balanced Assessment (Math and ELA) and the 11<sup>th</sup> grade ACT Assessment (Math and ELA) present a demographic need; these student groups may benefit from the creation of high-quality school options focused on meeting their needs. High-quality school options to serve student groups that have historically underperformed can be most impactful when the school works to alleviate barriers to access.

### 2. Academic Needs

- A. Geographies with a significant percentage of students enrolled in 1- and 2-star schools: In zip codes with one or more schools rated 1- or 2-stars on the Nevada School Performance Framework (NSPF), students are enrolling in schools that are not meeting or are partially meeting state performance standards, and the addition of a 3-, 4- or 5-star school would provide an alternative option for these students. Alternative 3-, 4- or 5-star options can be most impactful in communities that currently have limited or no public charter school options available.
- B. Students at risk of dropping out: Despite a rapidly improving graduation rate, nearly one in five students does not graduate from high school in four years, with certain student groups persistently graduating at lower rates than their peers. Additional data show various student populations have historically had higher dropout rates than their peers. Public charter schools aimed at enrolling and preventing at-risk

students from dropping out of school can be most impactful when they offer a unique academic experience for students and/or are closely aligned to Nevada’s priorities for workforce and economic development.

[NRS 388A.249](#) requires that approval of any charter application must include a determination that the proposed school meets one or more of the needs defined in the Academic and Demographic Needs Assessment. Therefore, the SPCSA must evaluate charter applications based upon both the public charter school application rubric and the proposed school’s plans to meet statewide academic and demographic needs identified in the SPCSA’s Needs Assessment. SPCSA staff will make recommendations based on the approach outlined in the visual below. Ultimately, the Authority Board will vote to approve or deny an application.



The Needs Assessment is updated annually, in collaboration with the NDE and local school districts, to ensure that each charter application process is reflective of the state’s current academic and demographic needs. The SPCSA is most likely to approve high quality applications that address the needs identified in the Needs Assessment. In reviewing and approving charter applications, the SPCSA will solicit input and feedback from local school districts, municipalities, other key stakeholders, and the public at large.

The SPCSA would like to thank all members of the SPCSA’s Community Working Group, including the NDE, local school districts, local municipalities, and community organizations, as well as members of the Nevada Association of School Superintendents for their input and feedback on the Academic and Demographic Needs Assessment. The SPCSA looks forward to continued engagement with school districts, their boards of trustees, municipalities, and community leaders. Further information on engagement with stakeholders can be found in Appendix D.



## II. Introduction to the Academic and Demographic Needs Assessment

### *Legislative context and purpose*

In May of 2019, the Nevada State Legislature passed Assembly Bill (AB) 462, which was signed into law with an effective date of June 3, 2019. The legislation required public charter school sponsors to make several changes to their authorizing and accountability practices. These changes included the requirements—now found in [NRS 388A.220](#) and [388A.249](#)—that the SPCSA conduct an annual assessment of statewide academic and demographic needs which must inform SPCSA’s charter authorization planning and decisions.

AB 462 added language to [NRS 388A.220](#), which states that “On or before January 31 of each year, the State Public Charter School Authority shall prepare, in collaboration with the Nevada Department of Education and, to the extent practicable, the board of trustees of each school district in this State and any other sponsor of a public charter school in this State, an evaluation of demographic information of pupils, the academic needs of pupils, and the needs of any pupils who are at risk of dropping out of school in this state.”

For each charter application, SPCSA staff conducts an application review process and makes recommendations to the SPCSA board. Subsequently, the SPCSA board reviews each application, its accompanying staff recommendation, and votes to approve or deny the proposal. Prior to the passage of AB 462, this review process required that an application complied with applicable laws and regulations and that the applicant “demonstrated competence in accordance with the criteria for approval prescribed by the sponsor.” AB 462 amended [NRS 388A.249](#), stating that staff shall additionally “consider the degree to which the proposed public charter school will address the needs identified” and “solicit input from the board of trustees of the school district in which the proposed public charter school will be located” in determining their application recommendations to the board. Similarly, [NRS 388A.249](#) states the SPCSA board may approve applications that, in addition to previous requirements noted, meet at least one need identified in the Academic and Demographic Needs Assessment and have received sufficient public input.

This document will address the following questions:

1. What are the standards and measures according to which the SPCSA assesses which specific demographics (student groups) may benefit from a public charter school option?
2. What are the standards and measures according to which the SPCSA assesses whether a geography has an academic need for a public charter school option?
3. What are the standards and measures according to which the SPCSA assesses the needs of students who are at risk of dropping out of school?
4. Based on the foregoing, which communities seem most likely to benefit from the strategic placement of a public charter school?
5. What are the implications of the foregoing for the SPCSA’s authorizing practices?

The objective of this document is to assess statewide academic and demographic needs as outlined in [NRS 388A.220](#). The specific measures outlined in this document are not, however, the only factors that the SPCSA will consider in authorizing new schools. [NRS 388A.220](#) also calls for public input in both this Needs Assessment and in the charter school authorizing process. In both processes, the SPCSA will consider many factors raised by the community, including evidence of demand for new schools, whether due to the need for additional facility capacity, students on public charter school waiting lists, or families desiring different educational options.

Furthermore, as the SPCSA develops new versions of the Academic and Demographic Needs Assessment in future years, the SPCSA will consider changes in Nevada’s educational landscape and may propose revisions in the way that academic and demographic needs are defined and measured, as appropriate. Additionally, the SPCSA will continue the practice of providing local school districts, municipalities, and other members of the public with the opportunity to provide input into and feedback on the definitions of academic and demographic needs, as well as the methodology of the Needs Assessment.

### III. Definitions of Academic and Demographic Need

[NRS 388A.220](#) requires that the Academic and Demographic Needs Assessment evaluate the “demographic information of pupils, the academic needs of pupils, and the needs of any pupils who are at risk of dropping out of school in this state.”

Accordingly, the SPCSA has defined a set of needs that are:

- Supported by rationale (data);
- Accompanied by information (maps and/or data) that are useful for applicants seeking to open public charter schools, as well as SPCSA staff and Authority Board Members reviewing applications for alignment to need;
- Reflective of the current context of the SPCSA (demographic makeup, locations, density, and performance of schools); and
- Responsive to the statewide, district, and localized educational context.

While the definitions of needs are specific, charter applicants have the flexibility to determine how they would address one or more of the needs, if approved. This iteration of the Academic and Demographic Needs Assessment incorporates feedback from the SPCSA’s Community Working Group, representatives of school districts and the Department of Education, and Authority members. Additional feedback, particularly as it relates to how overcrowding of existing district schools should factor into the definitions of need, may be incorporated in future iterations. SPCSA staff continue to gather information regarding overcrowding in school districts in order to inform future revisions. In the meantime, the SPCSA will continue to include a request for information regarding capacity and overcrowding when soliciting input from local school districts.

#### 1. Demographics

Applicants meeting this need will propose a school model that includes demonstrated capacity, credible plans, and thorough research and analysis in order to intentionally enroll and serve the following student groups, each of which has been identified as historically underperforming based on data provided by the NDE: Students qualifying for free or reduced-price lunch (FRL)<sup>1</sup>, English Language Learners (ELLs), Students with Disabilities (those with an Individual Education Program, or IEP), Students in Foster Care, and Students Experiencing Homelessness. Successful applicants will demonstrate the capacity to support these student groups in achieving academic performance at or above the state average. Applicants intending to enroll and serve student groups that have historically underperformed can be most impactful when they alleviate barriers to access, such as student transportation needs.

*Rationale: These student groups have consistently performed below the state average across various academic measures, including the 3<sup>rd</sup>-8<sup>th</sup> grade Smarter Balanced Assessment (in both Math and ELA) and the 11<sup>th</sup> grade ACT Assessment (in both Math and ELA).*

#### 2a. Academic Need: Geographies with 1- and 2-Star Schools (see Appendix B for definitions of Star Ratings)

Applicants meeting this need will propose a school model that includes demonstrated capacity, credible plans, and thorough research and analysis to intentionally provide access to 3-, 4- and 5-star schools in zip codes where a significant percentage of students are attending a 1- or 2-star school. Additionally, applicants meeting this need will provide intentional plans for partnering with the community and building on identified community assets to meet the needs of students within the community. Simply adding a school option in a community with 1- or 2-star schools will not inherently lead to effectively meeting the community needs. Rather, schools must establish trust with the community by working in partnership to intentionally meet the needs of the students and community. Alternative 3-, 4- or 5-star school options in communities where a significant percentage of students are attending a 1- or 2-star school can be most impactful when there are limited or no public charter school options available in the community. A map and list of zip codes with existing 1- and/or 2-star schools is provided in Appendix A; SPCSA charter schools are removed from the data

---

<sup>1</sup> Enrollment rates of students qualifying for free and reduced-price lunch is often used as a proxy measure for students in poverty.

set used to identify zip codes. Additionally, a map and list of existing SPCSA-sponsored charter schools, by zip code is provided in Appendix B.

*Rationale: The Nevada School Performance Framework (NSPF) school star ratings were developed by the NDE with input from local school districts and other stakeholders across the state. The NSPF identifies 3-star performance as adequate, while 2-star schools are defined as partially meeting standards, and 1-star schools are defined as not meeting standards. In zip codes where a significant percentage of students are enrolled in 1- or 2-star schools, students are attending schools that are, by definition, inadequate, and the addition of a 3-, 4- or 5-star school would provide an alternative option for these students.*

## **2b. Academic Need: Students at Risk of Dropping out of School**

Applicants meeting this need will propose a public charter school model that includes demonstrated capacity, credible plans, and thorough research and analysis to enroll and prevent at-risk students from dropping out of school. Models may include but are not limited to programs designed for student groups that are most at-risk of dropping out or programs aimed at enabling credit-deficient students to get back on track to graduate. Applicants should demonstrate a strong understanding of grade-level appropriate indicators for successful high school completion, such as early literacy, attendance, and credit sufficiency and plans to enable students to successfully meet these milestones. Public charter schools aimed at enrolling and preventing at-risk students from dropping out of school can be most impactful when they offer a unique academic experience for students and/or are closely aligned to Nevada's priorities for workforce and economic development.

*Rationale: Despite a rapidly improving graduation rate, nearly one in five Nevada students do not graduate from high school within four years, with certain student groups persistently graduating at lower rates than their peers. Additionally, various populations have historically had higher dropout rates than their peers. Furthermore, research has shown that there are early indicators for students at risk of dropping out of school that can be proactively addressed. According to [Attendance Works](#), chronic absenteeism is a critical factor in student academic success and in certain circumstances is associated with increased risk of dropping out of school. Other research by the [Annie E. Casey Foundation](#) found that students "who do not read proficiently by third grade are four times more likely to leave school without a diploma than proficient readers."*

[NRS 388A.249](#) requires that approval of any charter application must include a determination that the proposed school meets one or more of the needs identified in the Academic and Demographic Needs Assessment. The SPCSA has adjusted the charter application process such that both the SPCSA staff review of charter applications and Authority Board decisions on charter applications are both reflective of district input as well as the findings of the Needs Assessment. The SPCSA updates the Academic and Demographic Needs Assessment on an annual basis in order to ensure that each charter application process is reflective of the state's current academic and demographic needs.

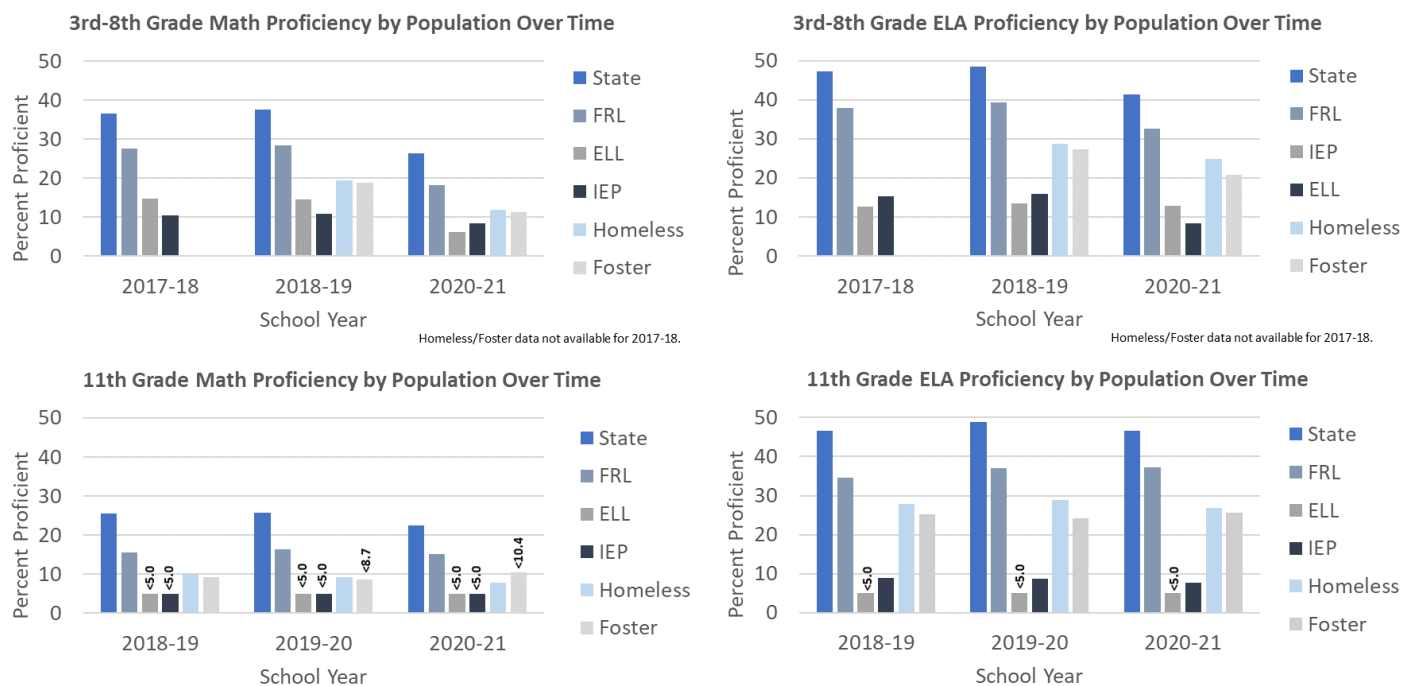
## IV. Findings of the Academic and Demographic Needs Assessment

The SPCSA has collaborated with the NDE and local Nevada school districts to conduct the Academic and Demographic Needs Assessment. The SPCSA will review charter applications in consideration of the Needs Assessment findings and is most likely to approve high quality applications that address the needs identified in the Needs Assessment. In reviewing and approving charter applications, the SPCSA solicits input and feedback from local school districts, municipalities, other key stakeholders, and the public at large.

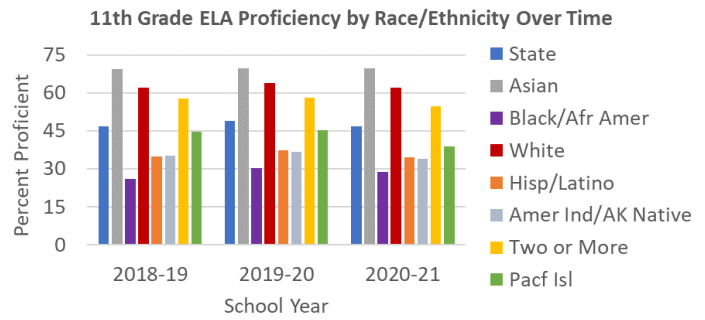
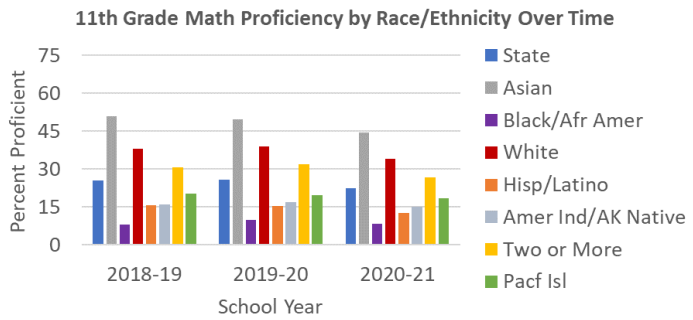
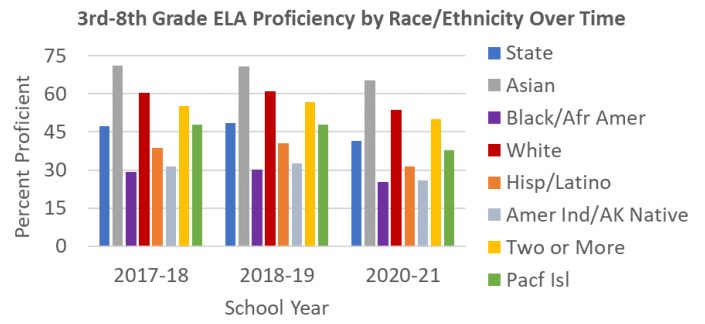
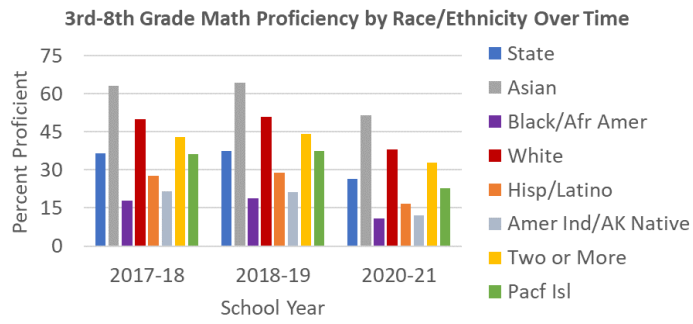
The information below provides a summary of current trends identified through this Needs Assessment. The SPCSA updates the Needs Assessment annually. As the educational landscape evolves, so too do the content and findings within the Needs Assessment.

### 1. Demographics

The analysis found that Economically Disadvantaged Students (those qualifying for free or reduced-price lunch or FRL), English Language Learners (ELLs), Students with Disabilities (those with Individualized Education Programs or IEPs), **students that are homeless, and students in foster care** have historically underperformed relative to the average Nevada student across multiple academic measures, including the 3<sup>rd</sup>-8<sup>th</sup> grade Smarter Balanced Assessment in Math/ELA and the 11<sup>th</sup> grade ACT Assessment in Math/ELA. The charts below show the academic performance of the FRL, ELL, IEP, **Homeless, and Foster populations** compared to the state for the three most recent available years of assessment data.



In addition, while the focus of this analysis was on the five aforementioned student groups (FRL, ELL, IEP, **Homeless, and Foster populations**), data from the Nevada Department of Education also showed that Black/African American, Hispanic/Latino, and American Indian/Alaskan Native students underperformed relative to the average Nevada student in the three most recent years of available data for the 3<sup>rd</sup>-8<sup>th</sup> grade Smarter Balanced Assessment in Math/ELA and the 11<sup>th</sup> grade ACT Assessment in Math/ELA.



## **2a. Academic Need: Geographies with 1- and 2-Star Schools**

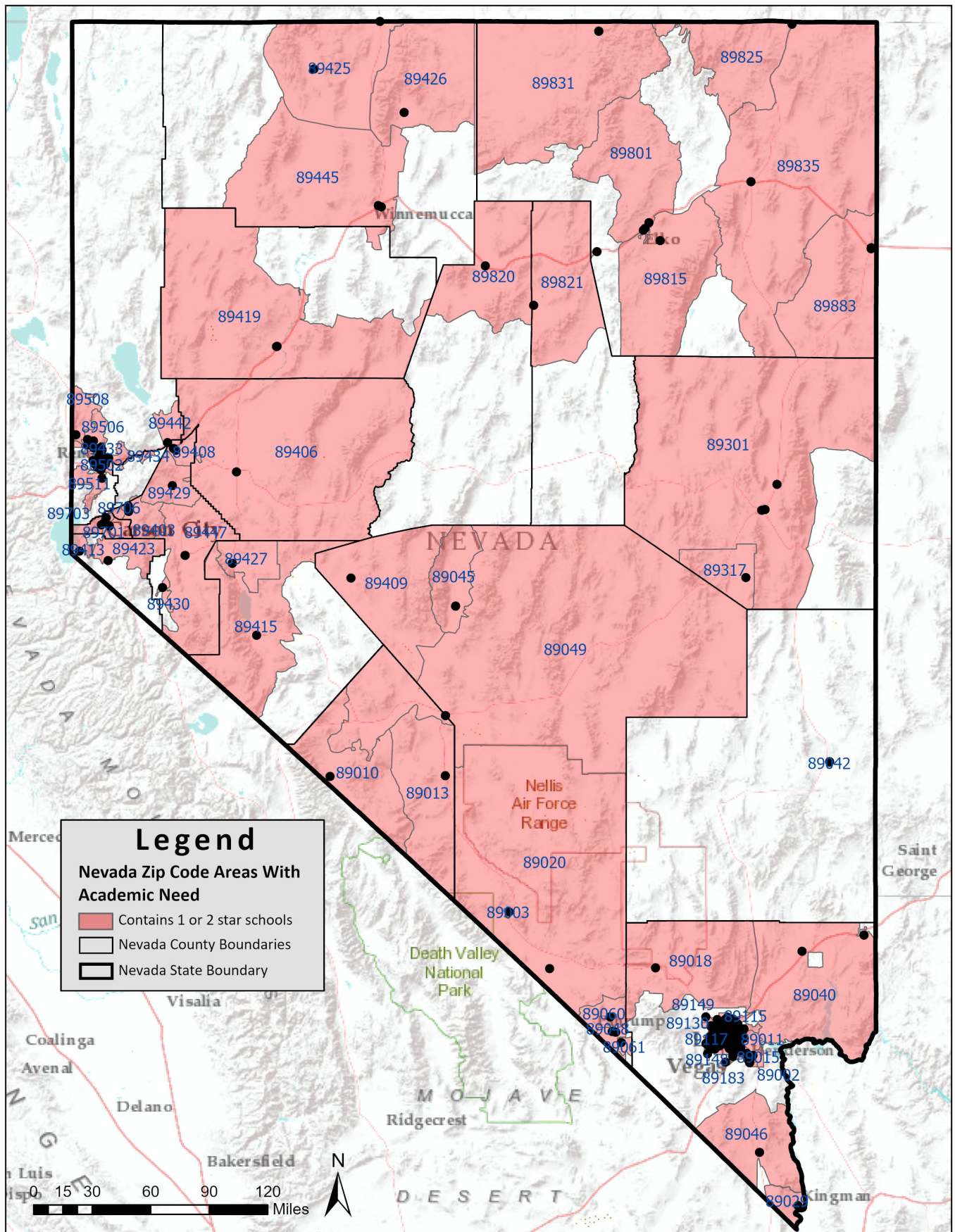
The following analysis provides an overview of academic need, as measured by the existence of 1- and 2-star schools, in Nevada as a whole and in each local school district. These data do not include public charter schools authorized by the SPCSA. Please note that a detailed summary of each local school district can be found in Appendix A. These analyses reflect the most recent data available: the 2018-19 school year Nevada School Performance Framework (NSPF) school star ratings and the 2021-22 school year enrollment data, both from the Nevada Department of Education.

- **Statewide (does not include SPCSA-sponsored charter schools)**
  - In the state of Nevada, 17 local school districts serve approximately 419,256 students in grades K-12 across 140 zip codes;
  - In the state of Nevada, there are 260 local district schools rated 1 or 2 stars across 93 zip codes that serve approximately 134,187 students, or 32.0% of students enrolled in local district schools.
- **Carson City School District**
  - The Carson City School District serves about 7,564 students in 13 schools across 3 zip codes; and
  - In the district, there are 4 schools rated 1 or 2 stars across 3 zip codes that serve about 2,201 students, or 29.0% of students in the district.
- **Churchill County School District**
  - The Churchill County School District serves about 3,238 students in 5 schools across 1 zip code; and
  - In the district, there is 1 school rated 1 or 2 stars in 1 zip code that serves 801 students, or 24.7% of students in the district.
- **Clark County School District**
  - The Clark County School District serves about 306,374 students in 389 schools across 64 zip codes; and
  - In the district, there are 160 schools rated 1 or 2 stars across 41 zip codes that serve about 102,235 students, or 33.3% of students in the district.
- **Douglas County School District**
  - The Douglas County School District serves about 5,256 students in 19 schools across 6 zip codes; and
  - In the district, there are 2 schools rated 1 or 2 stars across 2 zip codes that serve about 139 students, or 2.6% of students in the district.
- **Elko County School District**
  - The Elko County School District serves about 9,705 students in 38 schools across 8 zip codes; and
  - In the district, there are 11 schools rated 1 or 2 stars across 7 zip codes that serve about 2,474 students, or 25.4% of students in the district.
- **Esmeralda County School District**
  - The Esmeralda County School District serves about 76 students in 7 schools across 3 zip codes; and
  - In the district, there are 2 schools rated 1 or 2 stars across 2 zip codes that serve about 33 students, or 43.4% of students in the district.
- **Eureka County School District**
  - The Eureka County School District serves about 336 students in 4 schools across 2 zip codes; and
  - In the district, there is 1 school rated 1 or 2 stars in 1 zip code that serves 38 students, or 11.3% of students in the district.
- **Humboldt County School District**
  - The Humboldt County School District serves about 3,244 students in 17 schools across 5 zip codes; and
  - In the district, there are 6 schools rated 1 or 2 stars across 4 zip codes that serve about 1,148 students, or 35.3% of students in the district.
- **Lander County School District**
  - The Lander County School District serves about 974 students in 5 schools across 2 zip codes; and
  - In the district, there is 1 school rated 1 or 2 stars in 1 zip code that serves 367 students, or 37.6% of students in the district.

- Lincoln County School District
  - The Lincoln County School District serves about 844 students in 10 schools across 4 zip codes; and
  - In the district, there is 1 school rated 1 or 2 stars in 1 zip code that serves 69 students, or 8.1% of students in the district.
- Lyon County School District
  - The Lyon County School District serves about 8,818 students in 21 schools across 5 zip codes; and
  - In the district, there are 9 schools rated 1 or 2 stars across 5 zip codes that serve about 3,087 students, or 35.0% of students in the district.
- Mineral County School District
  - The Mineral County School District serves about 564 students in 4 schools across 2 zip codes; and
  - In the district, there are 2 schools rated 1 or 2 stars across 2 zip codes that serve about 151 students, or 26.7% of students in the district.
- Nye County School District
  - The Nye County School District serves about 5,353 students in 24 schools across 9 zip codes; and
  - In the district, there are 12 schools rated 1 or 2 stars across 8 zip codes that serve about 2,654 students, or 49.5% of students in the district.
- Pershing County School District
  - The Pershing County School District serves about 661 students in 4 schools across 2 zip codes; and
  - In the district, there are 2 schools rated 1 or 2 stars in 1 zip code that serve about 479 students, or 72.4% of students in the district.
- Storey County School District
  - The Storey County School District serves about 433 students in 4 schools across 2 zip codes; and
  - In the district, there are 0 schools rated 1 or 2 stars.
- Washoe County School District
  - The Washoe County School District serves about 64,610 students in 125 schools across 19 zip codes; and
  - In the district, there are 39 schools rated 1 or 2 stars across 11 zip codes that serve about 17,481 students, or 27.0% of students in the district.
- White Pine County School District
  - The White Pine County School District serves about 1,206 students in 9 schools across 4 zip codes; and
  - In the district, there are 7 schools rated 1 or 2 stars across 3 zip codes that serve about 830 students, or 68.8% of students in the district.

The subsequent page contains a statewide map indicating the zip codes that contain 1- and 2-star schools. See Appendix A for a map of each local school district.

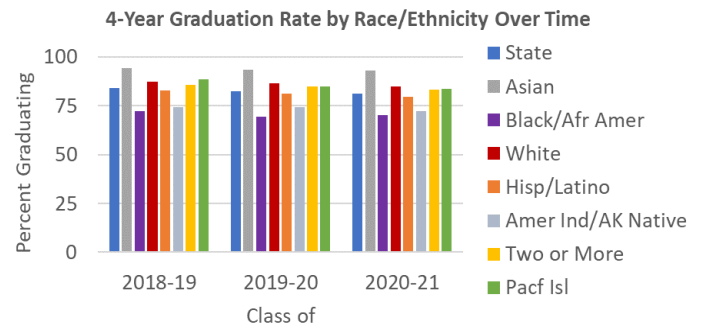
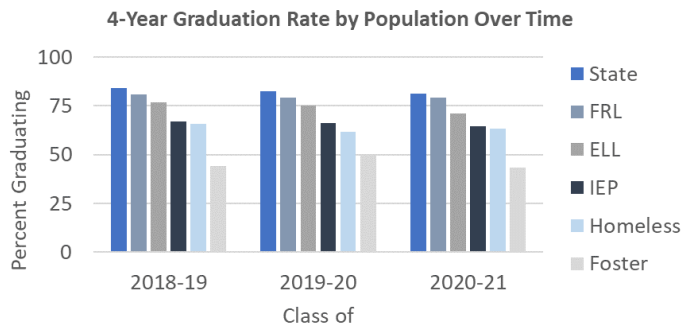






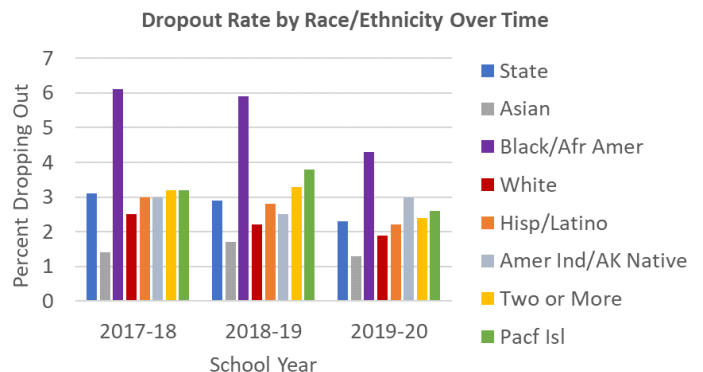
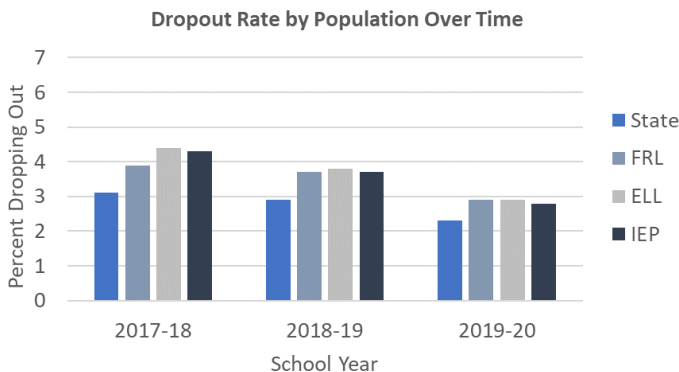
## 2b. Academic Need: Students at Risk of Dropping out of School

As seen in the charts below, certain Nevada student groups graduate from high school at lower rates than their peers, including Economically Disadvantaged Students (those qualifying for free or reduced-price lunch or FRL), English Language Learners (ELLs), Students with Disabilities (those with Individualized Education Programs or IEPs), students that are homeless, students in foster care, and students identifying as Black/African American, Hispanic/Latino, and American Indian/Alaskan Native.



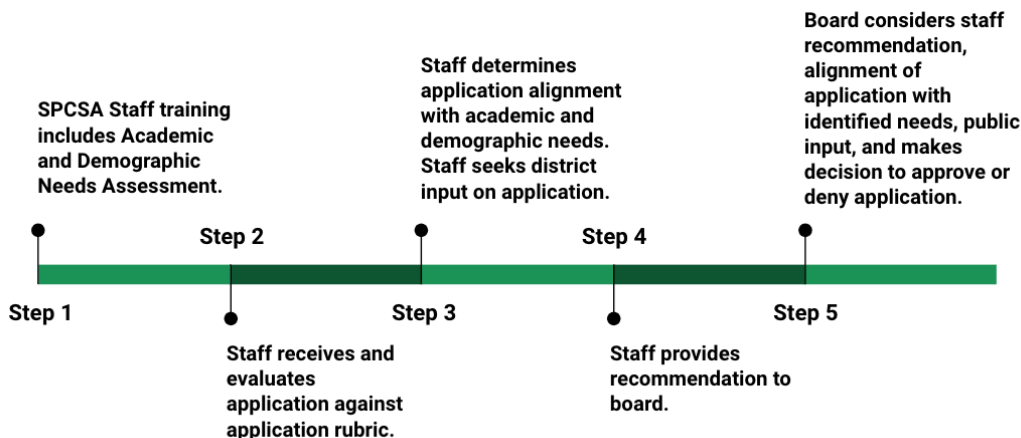
These graduation rate trends generally align with historical Nevada student dropout data for grades six to twelve. Although the Nevada Department of Education no longer presents dropout data in a format that allows comparison of dropout rates between student groups, historically, FRL, IEP, ELL, and various race/ethnicity populations have demonstrated higher dropout rates than their peers. As seen in the charts below, from 2017-18 to 2019-20:

- Students belonging to the FRL, ELL, and IEP populations dropped out of school at higher rates than the average Nevada student.
- Students identifying as Black/African American, Two or More Races, or Pacific Islander dropped out of school at higher rates than the average Nevada student.
- Students identifying as Black/African American had the highest dropout rates of any population.



## V. Implications for SPCSA Authorizing Practices

The SPCSA’s charter application process has always required that the charter applicant define the academic need the proposed school would serve as well as the school’s academic, operational, and financial plans. Based on the information provided, the SPCSA review team then evaluated applicants and recommended approval of those that addressed each section with “specific and accurate information that shows thorough preparation, presents a clear, realistic picture of how the school expects to operate, and inspires confidence in the applicant’s capacity to carry out the plan effectively in a way which will result in a 4- or 5-star school.”<sup>2</sup> The revisions to [NRS 388A.220](#) set forth in AB 462 did not contradict these historical practices, which are aligned to national best practices. However, [NRS 388A.220](#) requires that the SPCSA incorporate an additional component to the authorizing process as shown below.

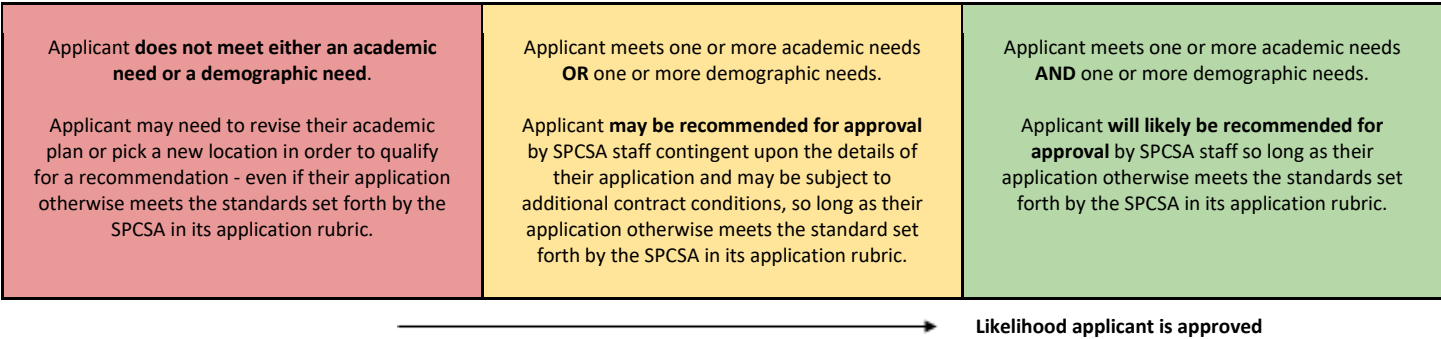


The SPCSA staff review of charter applications and Authority Board approval of charter applications still consider the quality of applications. Both stages now additionally consider (1) an application’s alignment with the findings of the Academic and Demographic Needs Assessment, (2) district input on an application’s alignment with the Needs Assessment, and (3) public input on demand for new schools.

Phase	Details	Who Leads?	Who can provide input?
Review of Charter Applications	Charter application review assesses both the quality of the application as well as the application’s responsiveness to the findings of the Needs Assessment.	SPCSA staff	Local school district where the proposed school would be located
Approval of Charter Applications	<p>The SPCSA board may only approve schools that (1) meet the standards for quality set by the SPCSA and (2) align to one or more needs identified in the Academic and Demographic Needs Assessment.</p> <p>In considering applications for approval, the SPCSA solicits public input. This involves targeted outreach to key stakeholders, including but not limited to local school districts and municipalities. The public input process explicitly addresses questions of demand for new schools and district facility capacity.</p>	SPCSA board	SPCSA staff, members of the public

<sup>2</sup> Per SPCSA Application Rubric

In determining whether to approve a charter application, the SPCSA considers the findings of the Academic and Demographic Needs Assessment. SPCSA staff make recommendations based on the approach outlined in the visual below. Ultimately, the Authority Board will vote to approve or deny an application.

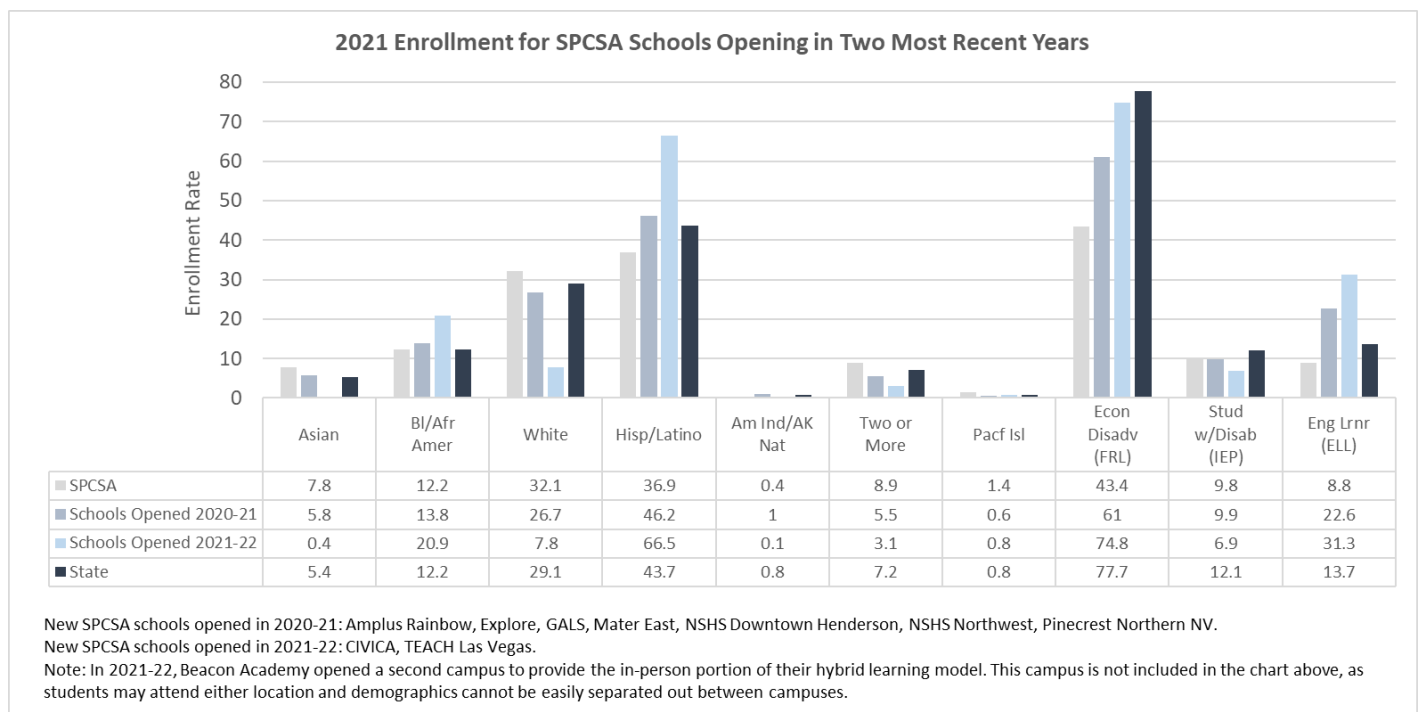


## VI. Implementation of the Academic and Demographic Needs Assessment

When AB 462 was signed into law in June of 2019, the SPCSA had two school campuses, expansions of existing charter holders, already approved to open in the fall of 2020: Amplus Academy's Rainbow Campus and Nevada State High School's Northwest Campus. In addition, the SPCSA was in receipt of several amendment applications from existing charter holders and was anticipating the receipt of several new charter applications in July of 2019. Even prior to the passage and approval of AB 462, SPCSA staff began meeting with potential applicants for new schools and expansions to discuss the pending legislation. The summer and fall of 2019 marked a transition for staff and the Authority to these new Authorizing requirements and the schools that opened in the fall of 2020 and 2021 reflect this transition. The seven new campuses that opened in the fall of 2020 represent a combination of actions taken by the Authority prior to the passage of AB 462 and during its initial implementation. **The new campuses that opened in the fall of 2021 were all approved in alignment with the SPCSA's Academic and Demographic Needs Assessment.**

In addition, during the fall of 2019, the Authority developed a new five-year strategic plan centered around the vision of *Equitable access to diverse, innovative, and high-quality public schools for every Nevada student*. This strategic plan helped to cement the Authority's focus on increasing enrollment diversity in order to serve a population that is representative of the state. While we understand that shifting the overall demographics of students will take time, the SPCSA is closely monitoring the demographics of our new school campuses to understand the impacts of the Authority's actions. With this context in mind, we see noticeable progress toward our aim to serve a population that is representative of the state.

The graph below shows that in just two years, and even when including school campuses that were approved prior to the passage of AB 462, the 2021 demographics of our schools that opened in either 2020-21 or 2021-22 are significantly more representative of the state's overall student population.



The table below provides 2021 demographics for each of the SPCSA school campuses that have opened since the fall of 2020. In addition, the statewide and local school district demographics are provided for reference.

Entity	Year Opened	2021 Enrollment	% Asian	% BI/Afr Amer	% White	% Hisp/Latino	% Amer Ind/AK Native	% Two or More	% Pacf Isl	% Econ Disadv (FRL)	% Stud w/Disab (IEP)	% Eng Lrn (ELL)
<b>STATE</b>	-	<b>492338</b>	<b>5.4</b>	<b>12.2</b>	<b>29.1</b>	<b>43.7</b>	<b>0.8</b>	<b>7.2</b>	<b>0.8</b>	<b>77.7</b>	<b>12.1</b>	<b>13.7</b>
<b>SPCSA</b>	-	<b>55415</b>	<b>7.8</b>	<b>12.2</b>	<b>32.1</b>	<b>36.9</b>	<b>0.4</b>	<b>8.9</b>	<b>1.4</b>	<b>43.4</b>	<b>9.8</b>	<b>8.8</b>
<b>CLARK COUNTY</b>	-	<b>320245</b>	<b>5.8</b>	<b>15.9</b>	<b>21.4</b>	<b>47.1</b>	<b>0.3</b>	<b>7.5</b>	<b>1.6</b>	<b>94.8</b>	<b>12.0</b>	<b>15.5</b>
Amplus Rainbow*	2020-21	673	24.6	32.0	20.2	13.8	0.4	7.7	1.0	41.6	<5.0	17.9
Explore Academy**	2020-21	192	4.1	19.2	39.0	29.6	1.0	6.7	0.0	46.3	14.5	5.2
GALS	2020-21	103	2.9	26.2	6.7	52.4	0.0	9.7	1.9	>95.0	17.4	21.3
Mater Academy East	2020-21	1573	0.8	11.7	4.5	79.3	0.1	2.7	0.6	>95.0	10.9	40.7
NSHS Dwn Henderson	2020-21	106	4.7	1.8	66.9	19.8	0.0	5.6	0.9	13.2	^	0.0
NSHS Northwest*	2020-21	118	5.0	15.2	37.2	29.6	0.8	10.1	1.6	26.2	^	^
Beacon Academy***	2021-22	355	3.0	25.9	19.1	43.9	0.2	6.7	0.8	67.0	24.7	14.6
CIVICA Academy	2021-22	576	0.5	20.3	6.4	69.2	0.1	3.2	0.0	71.1	7.2	32.1
TEACH Las Vegas	2021-22	112	0.0	24.1	15.1	52.6	0.0	2.6	5.3	93.7	^	27.6
<b>WASHOE COUNTY</b>	-	<b>66541</b>	<b>4.3</b>	<b>2.6</b>	<b>41.9</b>	<b>42.1</b>	<b>1.2</b>	<b>6.2</b>	<b>1.4</b>	<b>45.4</b>	<b>13.6</b>	<b>14.1</b>
Pinecrest Northern NV	2020-21	868	1.4	1.9	65.5	19.8	3.3	7.4	0.3	14.6	12.9	<5.0

^Rate is suppressed to protect student privacy, as the student group contains less than 10 students.

\*Approved prior to passage of AB 462

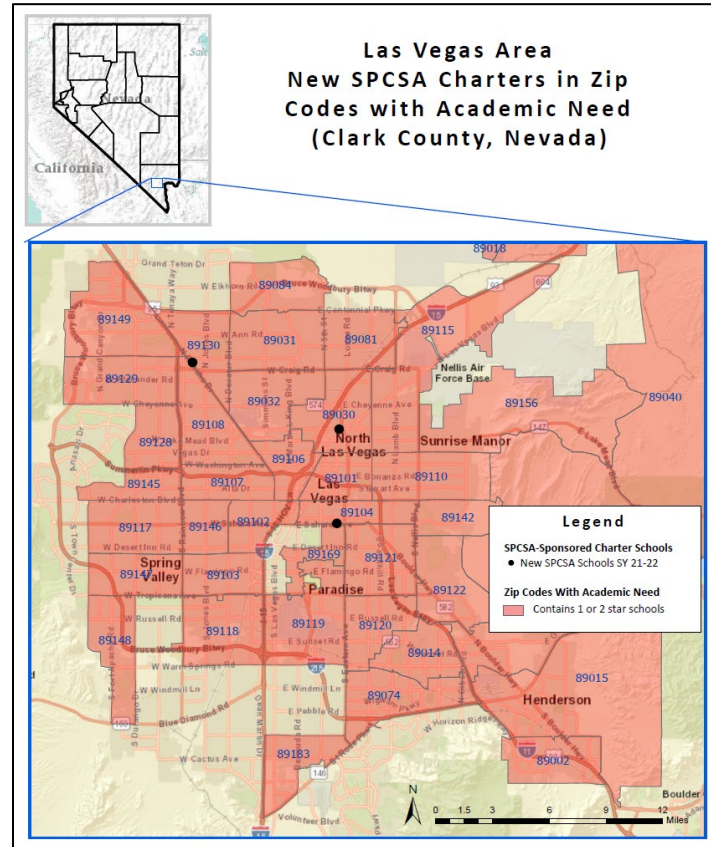
\*\*Approved by Achievement School District and transferred to SPCSA prior to opening per Section 80.75 of Assembly Bill 78 (2019)

\*\*\*In addition to the original Flamingo location, Beacon Academy opened a second campus (Sahara) in Las Vegas to provide the in-person portion of their hybrid learning model. As students may attend either location, demographics displayed are across both Beacon campuses.

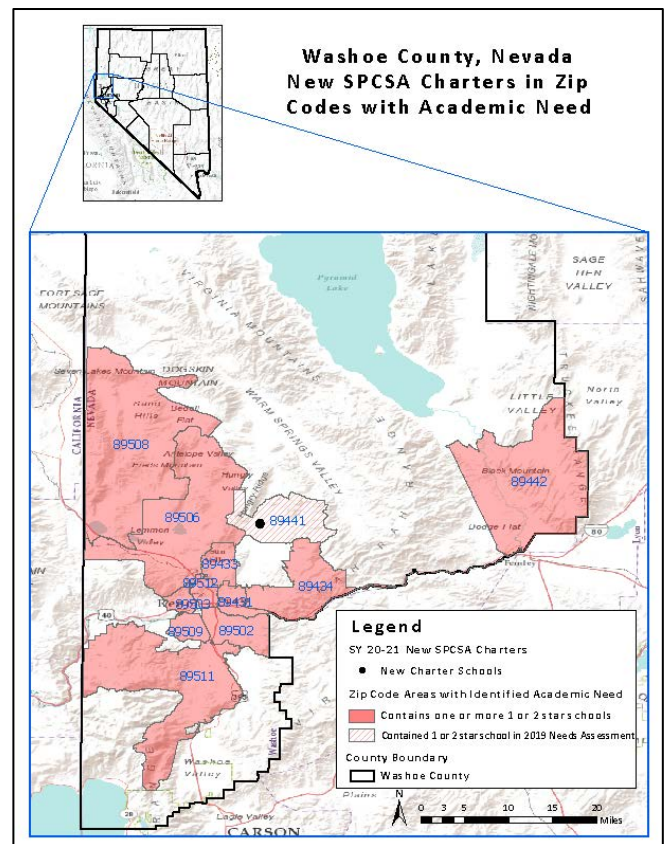
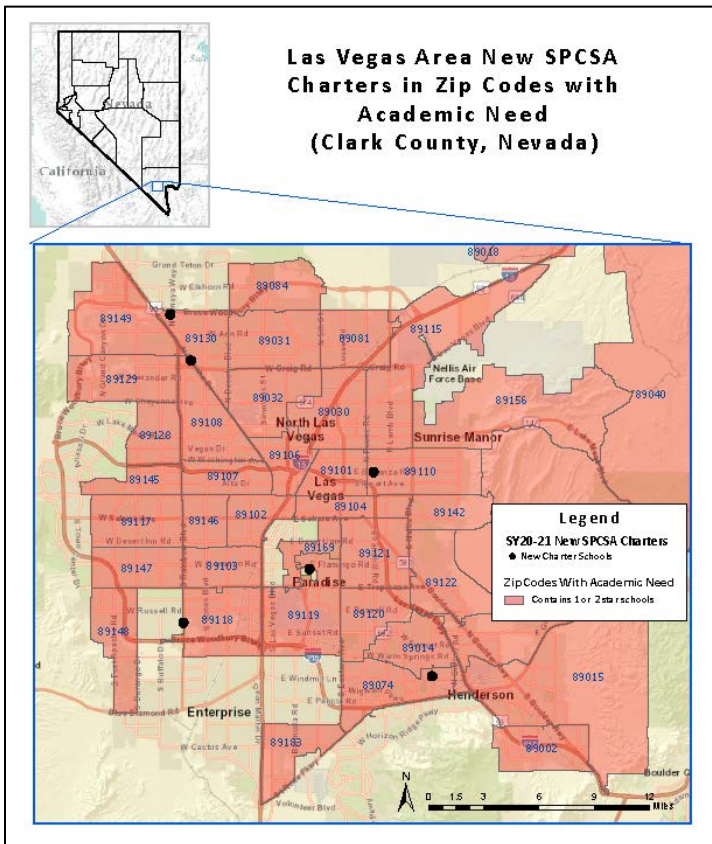
Finally, the maps on the following page show the location of each school campus that opened in the 2020-21 and 2021-22 school years. The shaded areas indicate zip codes that were identified under the *Academic Need: Geographies with 1- and 2-Star Schools*.



## Schools that opened in the 2021-22 school year



## Schools that opened in the 2020-21 school year



## VII. Conclusion

The SPCSA approved the first iteration of the Academic and Demographic Needs Assessment on July 26, 2019. This fourth iteration of the Needs Assessment incorporates the most recent school performance and enrollment data available from the NDE, including the 2018-19 NSPF school star ratings and the 2021-22 school year enrollment rates. Additionally, this iteration of the Academic and Demographic Needs Assessment incorporates feedback from the SPCSA's Community Working Group, representatives of school districts and the Department of Education, and Authority members regarding the definitions of need. Going forward, the SPCSA will continue to update the Needs Assessment annually.

The Needs Assessment provides up-to-date information about the demographics and academic needs of students across the state of Nevada. In addition, the Needs Assessment serves as a key driver in the development of the Growth Management Plan which is required under [NRS 388A.167](#) as amended by AB 462. While the Needs Assessment provides a snapshot in time of the needs of students in Nevada, the Growth Management Plan provides a preview of how new public charter schools will address the identified needs of students in Nevada.

Ultimately, AB 462 created a platform for the strategic and informed growth of public charter schools. Taken together, the Needs Assessment and the Growth Management Plan have and will continue to help the SPCSA to fulfill its responsibilities as an authorizer of public charter schools that are responsive to the needs of students and families throughout Nevada.

## VIII. Glossary of Terms

Unless otherwise noted, all definitions are from the [Nevada Report Card Website](#).

**American College Test (ACT) Assessment:** A standardized assessment for high school students used as Nevada's college and career readiness assessment required by NRS 390.600.

**Chronic Absenteeism:** Chronic absenteeism is a school quality measure that captures the rate of students who are absent for 10% or more of their enrolled days.

**Credit Deficiency:** Not having enough credits to progress to the next grade or graduate.

**Dropout:** Any pupil who withdrew during the previous school year for any reason specified in subsection 3 of NAC 387.215.

**English Language Learners:** English Language Learners (ELLs) are students who are unable to communicate fluently or learn effectively in English, who typically require specialized or modified instruction in both the English language and in their academic courses. Previously referred to as LEP.

**Free or Reduced-Price Lunch:** Students who are from households that qualify by income to receive free or reduced-price lunch at their school.

**Graduation Rate:** The rate at which 9th graders graduate by the end of the 12th grade (the number of students who graduate in four years with a regular high school diploma divided by the number of students who form the adjusted cohort for the graduating class.)

**Individualized Education Program (IEP):** A written statement for each child with a disability that is receiving special education services that is developed and reviewed by the IEP Team.

**Nevada Department of Education:** The State of Nevada's educational agency.

**Nevada Revised Statute:** Codified laws of the State of Nevada.

**Nevada School Performance Framework (NSPF):** The Nevada school rating system, where each public school in the state is issued an annual index score and star rating from 1-5 based on that school's performance on specific Measures.

**Nevada State Public Charter School Authority (SPCSA):** A governmental agency of the state of Nevada and a statewide charter school sponsor.<sup>3</sup>

**Proficiency:** Students demonstrating the successful acquisition of knowledge and skills they are expected to learn, as determined by established levels or cut-scores of proficiency on State-approved tests, as they progress through their education.

**Smarter Balanced Assessment:** The Smarter Balanced assessments are a key part of measuring Nevada student progress in grades 3-8 towards success in college and career. The computer-adaptive format and online administration of the assessments provide meaningful feedback that teachers and parents can use to help students succeed. The assessments are aligned with the Nevada Academic Content Standards in ELA and mathematics. Results from SBAC are included on the Nevada Report Card.<sup>4</sup>

---

<sup>3</sup> [https://charterschools.nv.gov/uploadedFiles/CharterSchoolsnvgov/content/Families/Strategic%20Plan%202019\\_FINAL\\_ADA\(1\).pdf](https://charterschools.nv.gov/uploadedFiles/CharterSchoolsnvgov/content/Families/Strategic%20Plan%202019_FINAL_ADA(1).pdf)

<sup>4</sup> [http://www.doe.nv.gov/Assessments/Smarter\\_Balanced\\_Assessment\\_Consortium\\_\(SBAC\)/](http://www.doe.nv.gov/Assessments/Smarter_Balanced_Assessment_Consortium_(SBAC)/)



## **IX. Appendices**

[Appendix A - District Summaries](#)

[Appendix B – Location of Current SPCSA-Sponsored Charter Schools](#)

[Appendix C - Definitions of Star Ratings](#)

[Appendix D - Stakeholder Input](#)

# *Appendix A:*

## *District Summaries*

*District Summaries will be provided in a separate attachment due to the size of the document. The analyses reflected in this appendix reflect the most recent data available: the 2018-19 Nevada School Performance Framework school star ratings data and 2020-21 enrollment data, both from the Nevada Department of Education.*

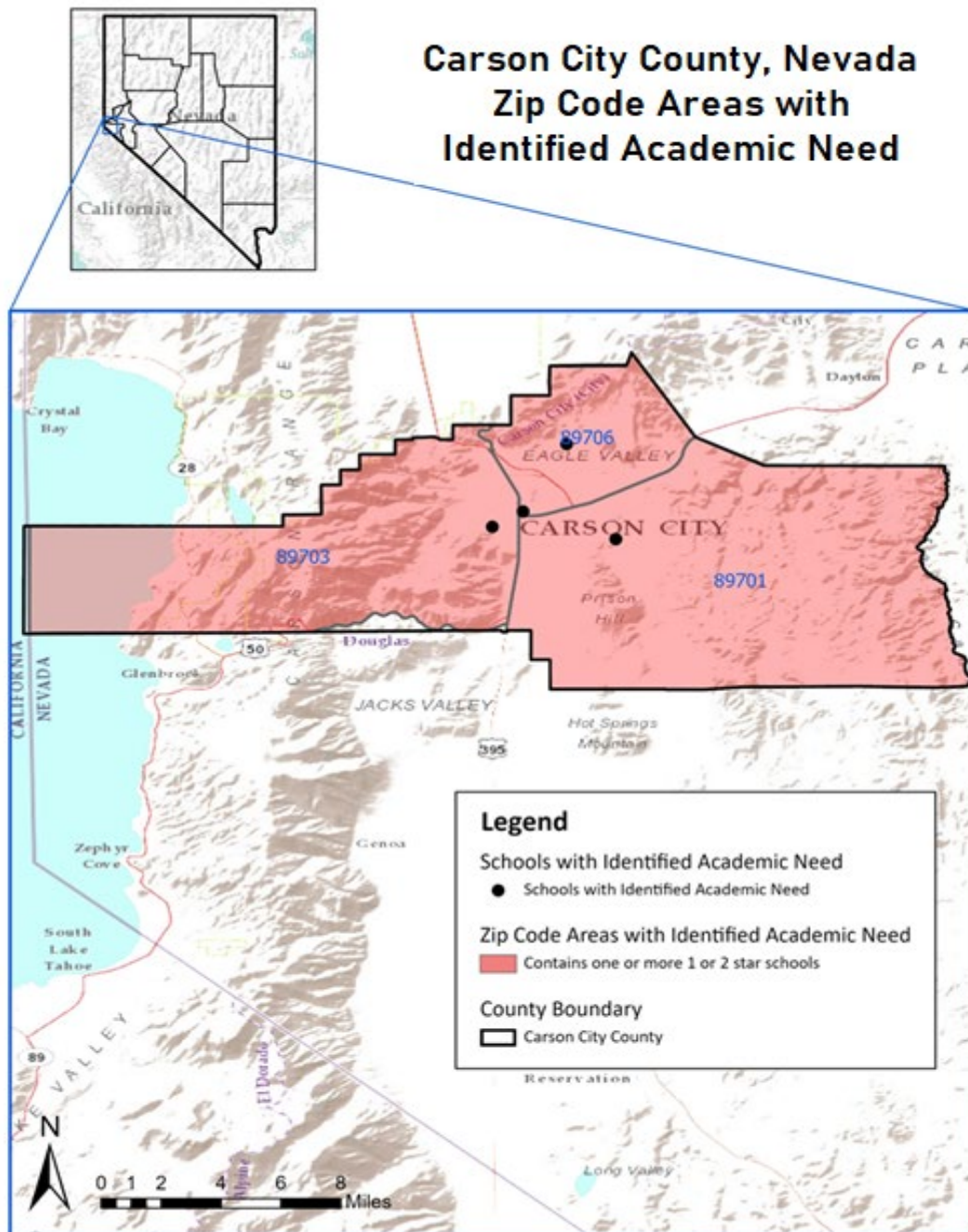
# District Snapshot

## Carson City School District

### Analysis of Zip Codes with 1- and 2-Star Schools

#### Summary

- The Carson City School District serves about 7,564 students in 13 schools across 3 zip codes; and
- In the district, there are 4 schools rated 1 or 2 stars across 3 zip codes that serve about 2,201 students, or 29% of students in the district.



# District Snapshot

## Carson City School District

### Analysis of Zip Codes with 1- and 2-Star Schools

#### Summary

- The Carson City School District serves about 7,564 students in 13 schools across 3 zip codes; and
- In the district, there are 4 schools rated 1 or 2 stars across 3 zip codes that serve about 2,201 students, or 29% of students in the district.

Zip Codes with 1- and 2-Star Schools								
Zip Code	October 1 2021 Enrollment	Total # Schools	# 1- or 2-Star Schools	1- or 2-Star School Enrollment	% Enrolled in 1- or 2-Star Schools	# 1- or 2-Star Elem. Schools	# 1- or 2-Star Middle Schools	# 1- or 2-Star High Schools
89701	4087	4	1	783	19.1	0	1	0
89703	2004	3	1	974	48.6	0	1	0
89706	1473	6	2	444	30.1	1	0	1

1- and 2-Star Schools								
School Name	Zip Code	Grades Served^	2018-19 NSPF Star Rating	2017-18 NSPF Star Rating	October 1 2021 Enrollment	% EL	% FRL	% IEP
Carson Montessori ES	89706	ES	2	2	283	<5.0	20.1	6
Carson MS	89703	MS	2	3	974	7.2	45.6	12.3
Eagle Valley MS	89701	MS	2	3	783	11.7	42.7	12.2
Pioneer Academy	89706	HS	2	1	161	n<10	>95.0	16.1

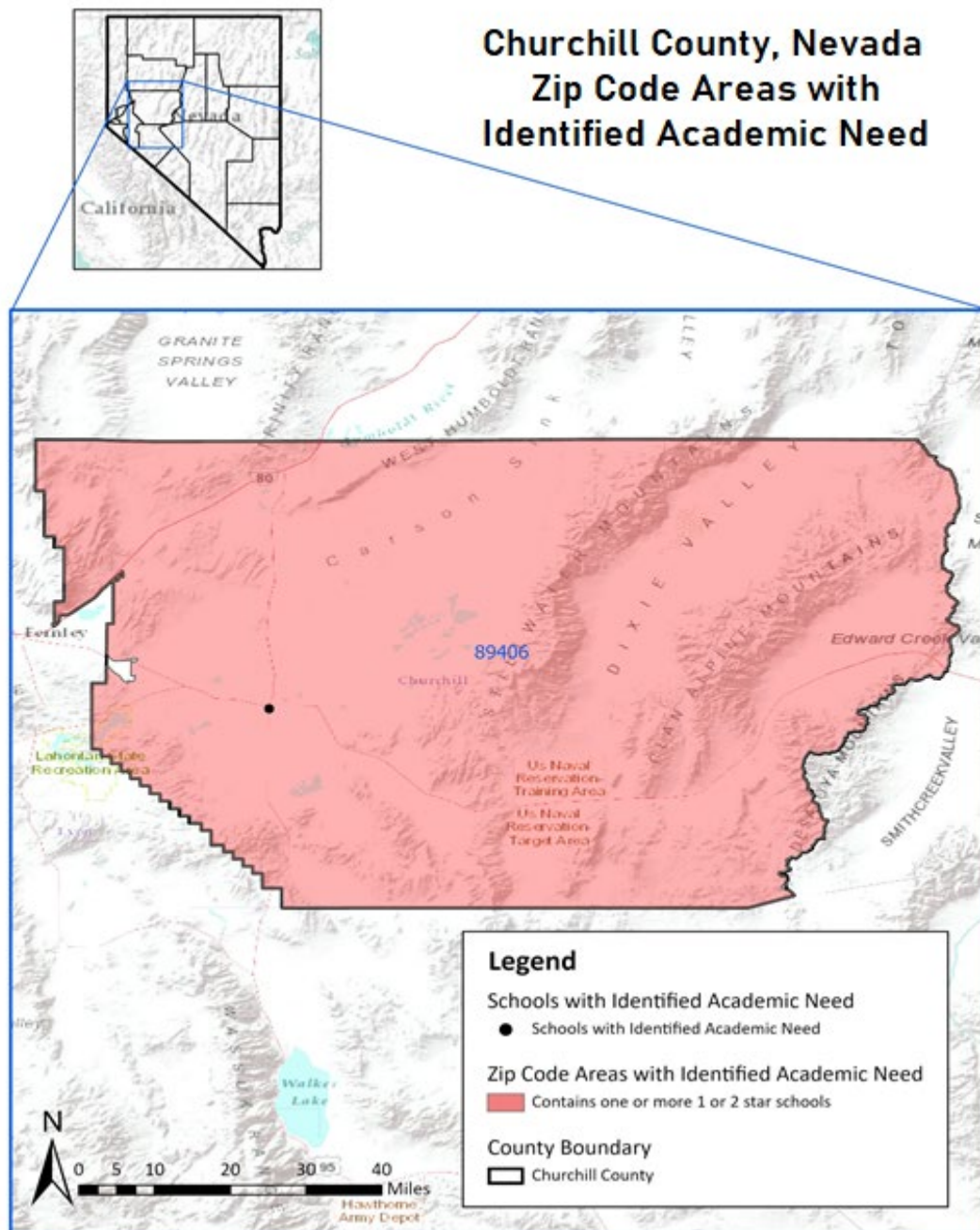
# District Snapshot

## Churchill County School District

### Analysis of Zip Codes with 1- and 2-Star Schools

#### Summary

- The Churchill County School District serves about 3,238 students in 5 schools across 1 zip code; and
- In the district, there is 1 school rated 1 or 2 stars in 1 zip code that serves 801 students, or 24.7% of students in the district.



# District Snapshot

## Churchill County School District

### Analysis of Zip Codes with 1- and 2-Star Schools

#### Summary

- The Churchill County School District serves about 3,238 students in 5 schools across 1 zip code; and
- In the district, there is 1 school rated 1 or 2 stars in 1 zip code that serves 801 students, or 24.7% of students in the district.

**Zip Codes with 1- and 2-Star Schools**

Zip Code	October 1 2021 Enrollment	Total # Schools	# 1- or 2-Star Schools	1- or 2-Star School Enrollment	% Enrolled in 1- or 2-Star Schools	# 1- or 2-Star Elem. Schools	# 1- or 2-Star Middle Schools	# 1- or 2-Star High Schools
89406	3238	5	1	801	24.7	0	1	0

**1- and 2-Star Schools**

School Name	Zip Code	Grades Served^	2018-19 NSPF Star Rating	2017-18 NSPF Star Rating	October 1 2021 Enrollment	% EL	% FRL	% IEP
Churchill MS	89406	MS	2	2	801	<5.0	33.8	13.3



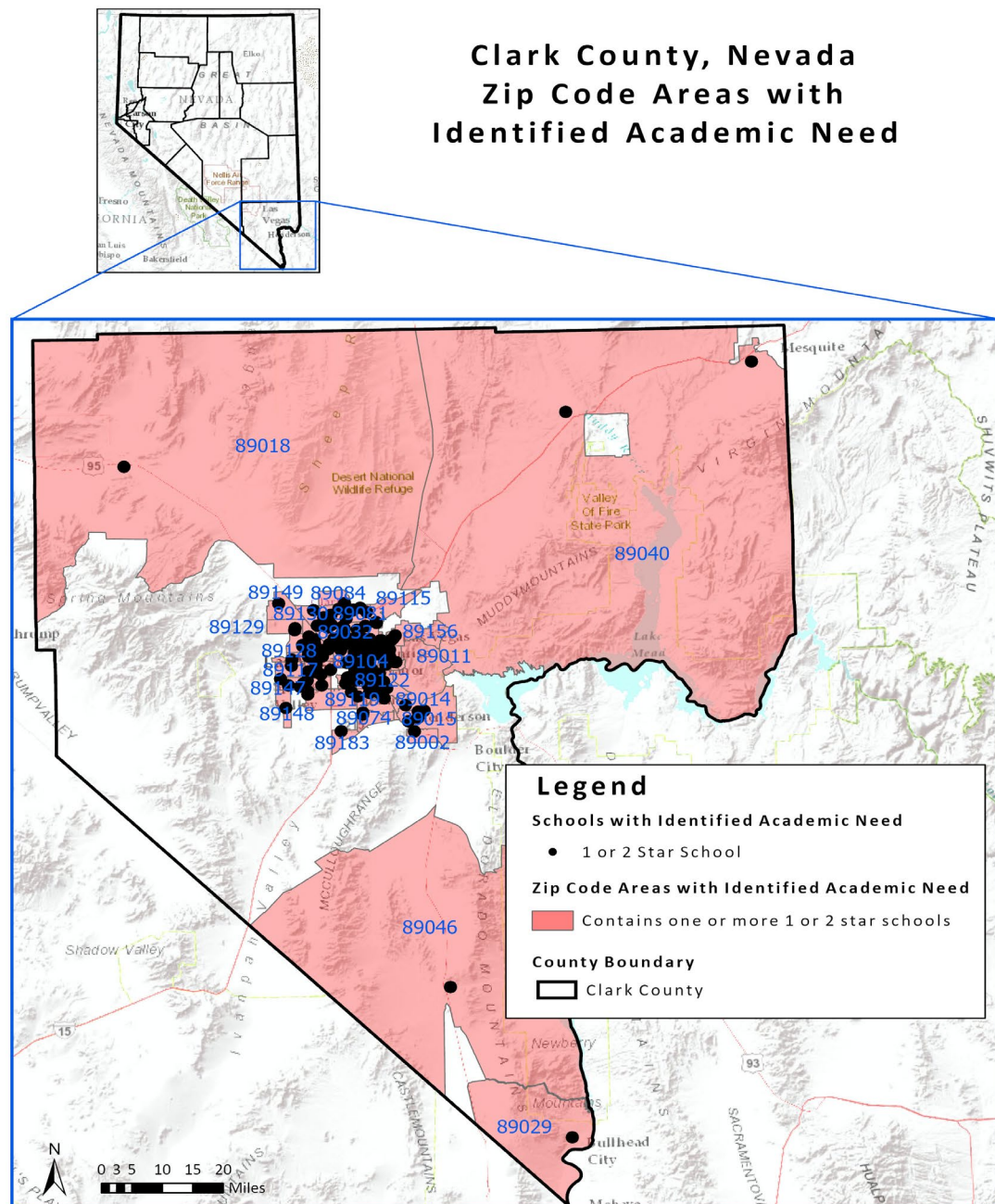
# District Snapshot

## Clark County School District

### Analysis of Zip Codes with 1- and 2-Star Schools

#### Summary

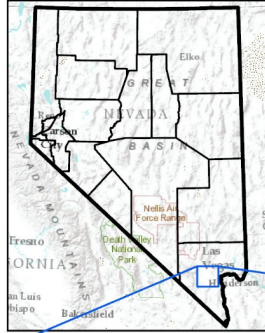
- The Clark County School District serves about 306,374 students in 389 schools across 64 zip codes; and
- In the district, there are 160 schools rated 1 or 2 stars across 41 zip codes that serve about 102,235 students, or 33.3% of students in the district.



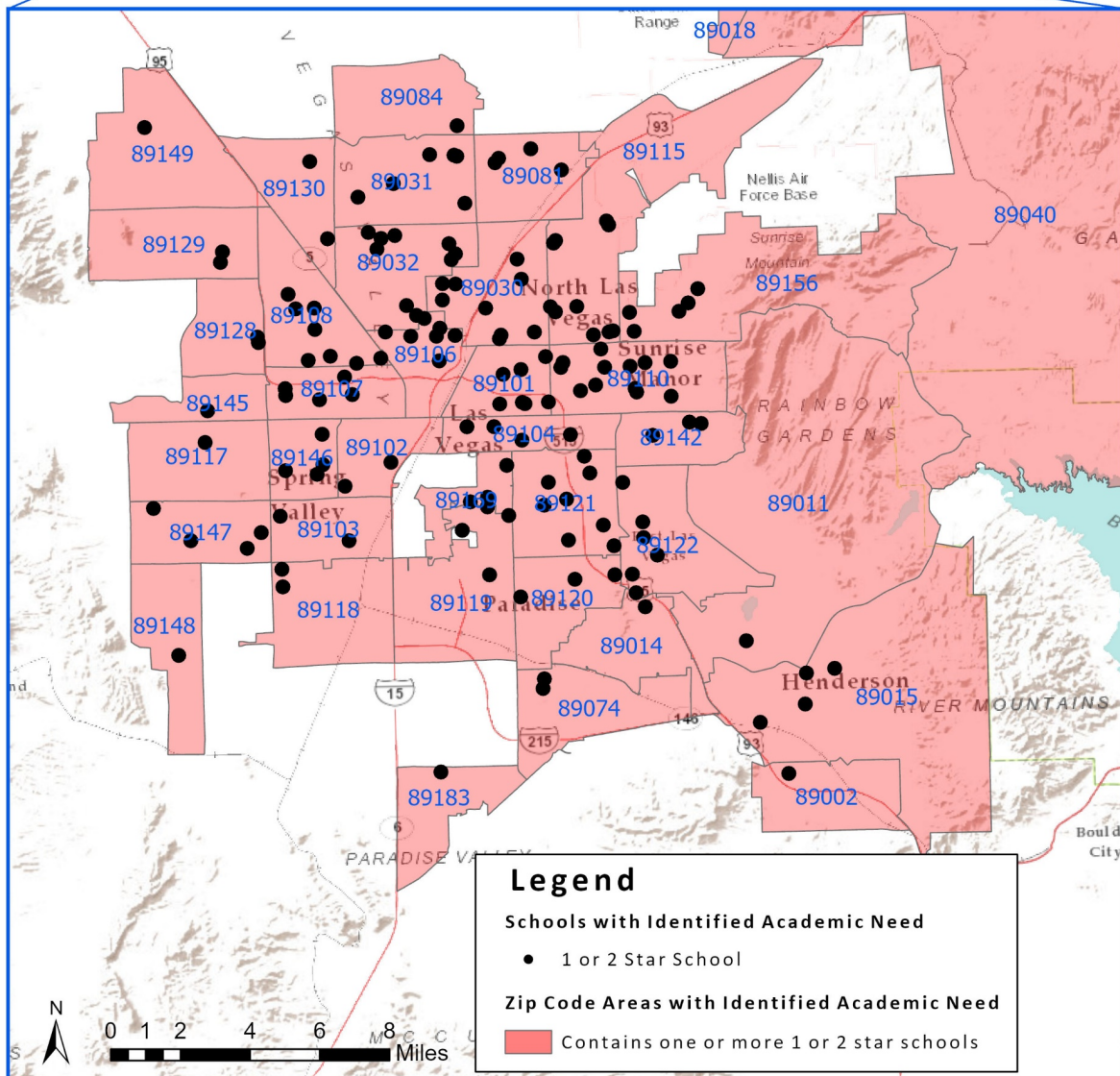
# District Snapshot

## Clark County School District

### Analysis of Zip Codes with 1- and 2-Star Schools



#### Las Vegas, Clark County, Nevada Zip Code Areas with Identified Academic Need





# District Snapshot

## Clark County School District

### Analysis of Zip Codes with 1- and 2-Star Schools

#### Summary

- The Clark County School District serves about 306,374 students in 389 schools across 64 zip codes; and
- In the district, there are 160 schools rated 1 or 2 stars across 41 zip codes that serve about 102,235 students, or 33.3% of students in the district.

Zip Codes with 1- and 2-Star Schools								
Zip Code	October 1 2021 Enrollment	Total # Schools	# 1- or 2-Star Schools	1- or 2-Star School Enrollment	% Enrolled in 1- or 2-Star Schools	# 1- or 2-Star Elem. Schools	# 1- or 2-Star Middle Schools	# 1- or 2-Star High Schools
89002	5976	7	1	507	8.4	1	0	0
89007	420	1	1	420	100.0	1	0	0
89014	6149	6	1	447	7.2	1	0	0
89015	7066	9	5	2826	39.9	3	2	0
89018	282	3	1	109	38.6	1	0	0
89025	134	1	1	134	100.0	1	0	0
89029	678	3	1	316	46.6	1	0	0
89030	8623	17	10	4892	56.7	6	2	2
89031	7330	9	6	3838	52.3	5	1	0
89032	10889	12	10	7262	66.6	6	3	1
89046	18	1	1	18	100.0	1	0	0
89074	4013	6	2	975	24.2	2	0	0
89081	2961	4	4	2961	100.0	3	1	0
89084	6818	6	1	543	7.9	1	0	0
89101	10353	22	8	4178	40.3	6	2	0
89102	5856	4	2	1953	33.3	1	1	0
89103	3062	7	2	636	20.7	1	0	1
89104	5188	9	3	1833	35.3	3	0	0
89106	6095	12	8	3288	53.9	7	1	0
89107	9762	10	6	6772	69.3	3	2	1
89108	5797	9	7	4665	80.4	6	1	0
89110	14356	17	13	11340	78.9	7	2	4
89115	8417	15	10	7038	83.6	8	2	0
89117	1742	3	1	560	32.1	1	0	0
89118	2244	3	2	1654	73.7	1	1	0
89119	2892	5	3	1839	63.5	2	1	0
89120	7364	9	3	1781	24.1	2	1	0
89121	15526	14	9	5131	33.0	6	3	0
89122	3361	8	6	3341	99.4	4	1	1
89128	3965	4	2	992	25.0	2	0	0
89129	5466	8	2	1275	23.3	1	1	0
89130	3617	5	2	957	26.4	2	0	0

Tables display zip codes and schools based on 2018-19 Nevada School Performance Framework (NSPF) star ratings, while enrollment is as of October 1, 2021. In general, elementary schools (ES) serve grades K-5, middle schools (MS) serve grades 6-8, and high schools (HS) serve grades 9-12. To protect student privacy, rates for population sizes less than 10 are displayed as "n<10", and enrollment rates less than 5% or greater than 95% are shown as <5.0 and >95.0, respectively.

January 28, 2022 Academic and Demographic Needs Assessment 29

# District Snapshot

## Clark County School District

### Analysis of Zip Codes with 1- and 2-Star Schools

#### Summary

- The Clark County School District serves about 306,374 students in 389 schools across 64 zip codes; and
- In the district, there are 160 schools rated 1 or 2 stars across 41 zip codes that serve about 102,235 students, or 33.3% of students in the district.

**Zip Codes with 1- and 2-Star Schools (continued)**

Zip Code	October 1 2021 Enrollment	Total # Schools	# 1- or 2-Star Schools	1- or 2-Star School Enrollment	% Enrolled in 1- or 2-Star Schools	# 1- or 2-Star Elem. Schools	# 1- or 2-Star Middle Schools	# 1- or 2-Star High Schools
89142	9071	8	3	2586	28.5	2	1	0
89145	2458	3	1	485	19.7	1	0	0
89146	6851	9	4	2192	31.9	4	0	0
89147	7111	8	4	2693	37.8	3	1	0
89148	5834	7	1	678	11.6	1	0	0
89149	8708	10	1	914	10.4	0	1	0
89156	5897	6	5	3336	56.5	4	1	0
89169	4866	7	6	4230	86.9	3	1	2
89183	3292	5	1	640	19.4	1	0	0

**1- and 2-Star Schools**

School Name	Zip Code	Grades Served^	2018-19 NSPF Star Rating	2017-18 NSPF Star Rating	October 1 2021 Enrollment	% EL	% FRL	% IEP
Adcock ES	89107	ES	2	2	422	32.9	>95.0	13.5
Antonello ES	89031	ES	1	3	490	16.1	>95.0	18.5
Bailey ES	89122	ES	2	1	524	18.1	>95.0	16.2
Bailey MS	89156	MS	1	1	1295	26.4	>95.0	11.3
Beckley ES	89121	ES	2	2	691	36.1	>95.0	10.1
Bell ES	89102	ES	2	1	659	27.3	>95.0	11.5
Bennett William ES	89029	ES	2	2	316	<5.0	>95.0	14.2
Booker ES	89106	ES	2	2	354	29.0	>95.0	16.1
Bowler Joseph ES	89007	ES	2	1	420	23.0	>95.0	17.3
Brinley MS	89108	MS	1	1	954	27.8	>95.0	14.3
Brookman ES	89110	ES	2	4	563	29.1	>95.0	12.9
Brown JHS	89015	MS	2	2	938	<5.0	>95.0	14.4
Bruner ES	89032	ES	2	1	539	20.0	>95.0	12.6
Bunker ES	89108	ES	2	2	665	26.3	>95.0	13.9
Burk Horizon SW HS	89103	HS	1	1	45	n<10	0.0	0
Burkholder MS	89015	MS	2	3	571	6.8	>95.0	17.8
Cannon JHS	89120	MS	2	2	839	21.8	>95.0	16.2
Carl ES	89130	ES	2	2	685	8.1	>95.0	12.5
Cashman MS	89102	MS	2	2	1294	27.5	>95.0	11.2

Tables display zip codes and schools based on 2018-19 Nevada School Performance Framework (NSPF) star ratings, while enrollment is as of October 1, 2021. In general, elementary schools (ES) serve grades K-5, middle schools (MS) serve grades 6-8, and high schools (HS) serve grades 9-12. To protect student privacy, rates for population sizes less than 10 are displayed as "n<10", and enrollment rates less than 5% or greater than 95% are shown as <5.0 and >95.0, respectively.

January 28, 2022 Academic and Demographic Needs Assessment 30

# District Snapshot

## Clark County School District

### Analysis of Zip Codes with 1- and 2-Star Schools

#### Summary

- The Clark County School District serves about 306,374 students in 389 schools across 64 zip codes; and
- In the district, there are 160 schools rated 1 or 2 stars across 41 zip codes that serve about 102,235 students, or 33.3% of students in the district.

1- and 2-Star Schools (continued)								
School Name	Zip Code	Grades Served^	2018-19 NSPF Star Rating	2017-18 NSPF Star Rating	October 1 2021 Enrollment	% EL	% FRL	% IEP
Cheyenne HS	89032	HS	2	2	1987	16.8	>95.0	14.2
Cortney JHS	89122	MS	2	2	1118	18.0	>95.0	15.2
Cowan Sunset SE	89122	HS	1	Not Rated	12	n<10	0.0	0
Cox C ES	89115	ES	2	2	638	36.8	>95.0	10.9
Cox D ES	89074	ES	2	3	492	8.5	>95.0	9.7
Cozine ES	89031	ES	2	3	680	17.2	>95.0	20.1
Craig ES	89030	ES	1	2	485	37.9	>95.0	12.7
Crestwood ES	89104	ES	2	4	577	46.7	>95.0	8.6
Culley ES	89108	ES	2	1	610	44.4	>95.0	11.4
Cunningham ES	89122	ES	2	1	648	15.7	>95.0	9.2
Dearing ES	89121	ES	2	3	739	27.8	>95.0	14.6
Decker ES	89103	ES	2	2	591	36.3	>95.0	10.4
Delta Charter HS	89030	HS	1	1	511	10.7	>95.0	15.6
Delta Charter MS	89030	MS	2	2	260	6.9	>95.0	11.9
Derfelt ES	89117	ES	2	3	560	16.4	>95.0	10.3
Desert Pines HS	89110	HS	2	2	3186	28.5	>95.0	12.3
Desert Rose HS	89030	HS	1	1	111	25.2	>95.0	15.3
Detwiler ES	89106	ES	2	2	522	28.5	>95.0	14.5
Dickens ES	89081	ES	2	3	718	11.2	>95.0	11
Diskin ES	89147	ES	2	4	542	29.8	>95.0	11.8
Duncan ES	89084	ES	1	1	543	6.0	>95.0	10.3
Earl I ES	89115	ES	2	2	560	44.6	>95.0	12.1
Earl M ES	89118	ES	2	3	467	17.7	>95.0	12.8
Edwards ES	89110	ES	2	3	545	39.8	>95.0	10.4
Eldorado HS	89110	HS	2	2	2020	24.8	>95.0	13
Elizondo ES	89031	ES	1	3	594	15.9	>95.0	11.6
Escobedo MS	89149	MS	2	2	914	<5.0	>95.0	12.5
Ferron ES	89121	ES	2	3	490	26.1	>95.0	12.8
Findlay MS	89031	MS	1	2	1085	12.5	>95.0	14.1
Fitzgerald ES	89030	ES	2	2	312	19.8	>95.0	15.7
Galloway ES	89002	ES	2	2	507	<5.0	>95.0	18.1
Garside MS	89107	MS	2	2	1140	24.9	>95.0	13.3

Tables display zip codes and schools based on 2018-19 Nevada School Performance Framework (NSPF) star ratings, while enrollment is as of October 1, 2021. In general, elementary schools (ES) serve grades K-5, middle schools (MS) serve grades 6-8, and high schools (HS) serve grades 9-12. To protect student privacy, rates for population sizes less than 10 are displayed as "n<10", and enrollment rates less than 5% or greater than 95% are shown as <5.0 and >95.0, respectively.

January 28, 2022

# District Snapshot

## Clark County School District

### Analysis of Zip Codes with 1- and 2-Star Schools

#### Summary

- The Clark County School District serves about 306,374 students in 389 schools across 64 zip codes; and
- In the district, there are 160 schools rated 1 or 2 stars across 41 zip codes that serve about 102,235 students, or 33.3% of students in the district.

1- and 2-Star Schools (continued)								
School Name	Zip Code	Grades Served^	2018-19 NSPF Star Rating	2017-18 NSPF Star Rating	October 1 2021 Enrollment	% EL	% FRL	% IEP
Gene Ward ES	89119	ES	1	2	541	39.0	>95.0	15.3
Gibson MS	89107	MS	2	3	1240	27.4	>95.0	10.5
Gilbert ES	89032	ES	2	4	471	11.6	>95.0	7.8
Global Community HS	89110	HS	2	1	129	89.9	>95.0	0
Gray ES	89146	ES	2	2	382	29.8	>95.0	13.8
Griffith ES	89107	ES	2	1	546	38.0	>95.0	12
Hancock ES	89146	ES	1	1	497	19.1	>95.0	12.4
Harmon ES	89120	ES	1	2	531	32.7	>95.0	14.6
Harney MS	89142	MS	2	2	1451	16.0	>95.0	11.3
Harris ES	89121	ES	2	1	615	28.4	>95.0	16.2
Hayes ES	89147	ES	2	3	476	14.4	>95.0	16.1
Heard ES	89110	ES	2	2	717	34.8	>95.0	7.5
Herr ES	89156	ES	1	1	598	30.2	>95.0	6.8
Hewetson ES	89101	ES	2	2	673	46.2	>95.0	9.6
Hickey ES	89156	ES	2	2	621	30.1	>95.0	10.1
Hinman ES	89015	ES	2	2	344	7.2	>95.0	25.5
Hollingsworth ES	89101	ES	1	1	486	40.9	>95.0	8.8
Hummel ES	89183	ES	2	2	640	7.0	>95.0	14.3
Indian Springs ES	89018	ES	1	2	109	n<10	>95.0	16.5
Iverson ES	89142	ES	2	3	529	24.9	>95.0	11.7
Jacobson ES	89145	ES	2	2	485	12.7	>95.0	8.4
Jeffers ES	89115	ES	2	2	551	46.2	>95.0	13.6
Johnston MS	89081	MS	2	1	1236	10.5	>95.0	16
Kahre ES	89129	ES	2	2	343	5.5	>95.0	16.3
Katz ES	89128	ES	1	2	551	18.5	>95.0	10.8
Keller ES	89110	ES	2	1	466	41.4	>95.0	14.3
Keller MS	89110	MS	1	2	1189	28.4	>95.0	13.3
Kelly ES	89106	ES	1	2	331	7.5	>95.0	13.5
Kim ES	89147	ES	2	2	373	22.7	>95.0	18.2
King Martin ES	89156	ES	2	1	358	27.3	>95.0	14.2
Lawrence JHS	89147	MS	2	3	1302	11.2	>95.0	11.5
Lincoln ES	89030	ES	2	2	645	46.6	>95.0	11.9

Tables display zip codes and schools based on 2018-19 Nevada School Performance Framework (NSPF) star ratings, while enrollment is as of October 1, 2021. In general, elementary schools (ES) serve grades K-5, middle schools (MS) serve grades 6-8, and high schools (HS) serve grades 9-12. To protect student privacy, rates for population sizes less than 10 are displayed as "n<10", and enrollment rates less than 5% or greater than 95% are shown as <5.0 and >95.0, respectively.

January 28, 2022 Academic and Demographic Needs Assessment 32

# District Snapshot

## Clark County School District

### Analysis of Zip Codes with 1- and 2-Star Schools

#### Summary

- The Clark County School District serves about 306,374 students in 389 schools across 64 zip codes; and
- In the district, there are 160 schools rated 1 or 2 stars across 41 zip codes that serve about 102,235 students, or 33.3% of students in the district.

1- and 2-Star Schools (continued)								
School Name	Zip Code	Grades Served^	2018-19 NSPF Star Rating	2017-18 NSPF Star Rating	October 1 2021 Enrollment	% EL	% FRL	% IEP
Long ES	89104	ES	1	1	709	32.2	>95.0	7.3
Lowman ES	89115	ES	1	1	670	17.7	>95.0	11
Lunt ES	89101	ES	2	2	459	38.5	>95.0	12.4
Lynch ES	89115	ES	1	1	497	30.9	>95.0	8.4
Mack MS	89121	MS	2	1	1114	28.0	>95.0	12.6
Manch ES	89115	ES	1	1	667	12.1	>95.0	10.9
Martin MS	89101	MS	2	2	1391	25.1	>95.0	10.6
McCall ES	89030	ES	1	1	256	43.3	>95.0	16.4
McMillan ES	89128	ES	2	3	441	13.6	>95.0	14.9
McWilliams ES	89108	ES	2	2	621	45.7	>95.0	14.3
Mendoza ES	89142	ES	2	2	606	33.3	>95.0	12.2
Miley Achvmt ES	89101	ES	1	Not Rated	5	n<10	n<10	n<10
Miley Achvmt MS	89101	MS	1	Not Rated	43	n<10	>95.0	90.6
Miller John ES	89121	ES	1	Not Rated	35	n<10	>95.0	>95.0
Miller John MS	89121	MS	1	Not Rated	31	n<10	>95.0	>95.0
Molasky JHS	89129	MS	1	2	932	11.2	>95.0	14.6
Monaco MS	89115	MS	1	1	1131	29.8	>95.0	14.7
Moore ES	89110	ES	1	1	541	38.0	>95.0	9.7
Morris Sunset HS	89110	HS	1	1	51	29.4	0.0	0
Mountain View ES	89156	ES	2	1	464	26.5	>95.0	11.2
One Hundred Academy ES	89032	ES	2	1	300	7.3	>95.0	5.6
One Hundred Academy MS	89032	MS	2	2	147	10.2	>95.0	8.8
Orr MS	89119	MS	2	1	851	24.6	>95.0	13.3
Paradise ES	89119	ES	2	2	447	26.1	>95.0	9.1
Park ES	89104	ES	2	2	547	36.0	>95.0	12.2
Parson ES	89130	ES	2	1	272	22.0	>95.0	12.1
Perkins C ES	89032	ES	1	2	544	17.6	>95.0	17.8
Perkins U ES	89025	ES	2	2	134	n<10	>95.0	17.1
Petersen ES	89169	ES	1	1	752	28.1	>95.0	11.7
Priest ES	89032	ES	2	2	594	21.5	>95.0	11.7
Rainbow Dreams ES	89106	ES	1	1	59	0.0	>95.0	0
Red Rock ES	89107	ES	1	1	610	30.0	>95.0	11.3

Tables display zip codes and schools based on 2018-19 Nevada School Performance Framework (NSPF) star ratings, while enrollment is as of October 1, 2021. In general, elementary schools (ES) serve grades K-5, middle schools (MS) serve grades 6-8, and high schools (HS) serve grades 9-12. To protect student privacy, rates for population sizes less than 10 are displayed as "n<10", and enrollment rates less than 5% or greater than 95% are shown as <5.0 and >95.0, respectively.

January 28, 2022

# District Snapshot

## Clark County School District

### Analysis of Zip Codes with 1- and 2-Star Schools

#### Summary

- The Clark County School District serves about 306,374 students in 389 schools across 64 zip codes; and
- In the district, there are 160 schools rated 1 or 2 stars across 41 zip codes that serve about 102,235 students, or 33.3% of students in the district.

1- and 2-Star Schools (continued)								
School Name	Zip Code	Grades Served^	2018-19 NSPF Star Rating	2017-18 NSPF Star Rating	October 1 2021 Enrollment	% EL	% FRL	% IEP
Reed ES	89108	ES	2	1	603	27.3	>95.0	14.4
Reid ES	89046	ES	1	Not Rated	18	n<10	>95.0	n<10
Roberts ES	89074	ES	2	1	483	10.9	>95.0	10.7
Robison MS	89110	MS	2	2	883	29.2	>95.0	13.2
Ronnow ES	89101	ES	2	2	529	48.9	>95.0	10.2
Ronzone ES	89108	ES	2	2	721	34.1	>95.0	9.4
Roundy ES	89146	ES	2	3	557	44.5	>95.0	11.6
Rundle ES	89110	ES	2	1	600	32.3	>95.0	9.5
Sawyer MS	89118	MS	2	3	1187	17.6	>95.0	13.3
Scott ES	89081	ES	1	1	572	12.2	>95.0	13.6
Sedway MS	89032	MS	1	1	1074	22.8	>95.0	13.7
Sewell ES	89015	ES	2	3	450	8.2	>95.0	21.7
Smith Hal ES	89122	ES	1	1	681	15.2	>95.0	12.3
Smith MS	89030	MS	1	2	1122	32.9	>95.0	11.5
Squires ES	89030	ES	2	3	584	46.4	>95.0	11.9
Stanford ES	89110	ES	2	2	450	31.3	>95.0	11.1
Stewart ES	89169	ES	1	Not Rated	14	n<10	>95.0	>95.0
Stewart HS	89169	HS	1	Not Rated	48	45.8	>95.0	>95.0
Stewart MS	89169	MS	1	Not Rated	21	n<10	>95.0	>95.0
Sunrise Acres ES	89101	ES	2	3	592	38.5	>95.0	12.3
Swainston MS	89032	MS	2	3	1135	15.9	>95.0	15.4
Tanaka ES	89148	ES	2	2	678	11.3	>95.0	13.7
Tartan ES	89081	ES	1	1	435	10.3	>95.0	16.7
Tate ES	89115	ES	2	3	690	31.4	>95.0	8.6
Taylor R ES	89015	ES	1	1	523	8.2	>95.0	18.5
Thomas ES	89169	ES	1	2	626	30.6	>95.0	9.2
Thorpe ES	89014	ES	2	2	447	6.9	>95.0	8.2
Toland ES	89106	ES	2	2	277	27.4	>95.0	10.4
Tomiyasu ES	89120	ES	2	2	411	22.1	>95.0	13.8
Twin Lakes ES	89108	ES	2	2	491	42.1	>95.0	11.4
Ullom ES	89121	ES	2	2	580	33.7	>95.0	10.6
Valley HS	89169	HS	2	2	2769	27.0	>95.0	9.2

Tables display zip codes and schools based on 2018-19 Nevada School Performance Framework (NSPF) star ratings, while enrollment is as of October 1, 2021. In general, elementary schools (ES) serve grades K-5, middle schools (MS) serve grades 6-8, and high schools (HS) serve grades 9-12. To protect student privacy, rates for population sizes less than 10 are displayed as "n<10", and enrollment rates less than 5% or greater than 95% are shown as <5.0 and >95.0, respectively.

January 28, 2022 Academic and Demographic Needs Assessment 34

# District Snapshot

## Clark County School District

### Analysis of Zip Codes with 1- and 2-Star Schools

#### Summary

- The Clark County School District serves about 306,374 students in 389 schools across 64 zip codes; and
- In the district, there are 160 schools rated 1 or 2 stars across 41 zip codes that serve about 102,235 students, or 33.3% of students in the district.

1- and 2-Star Schools (continued)								
School Name	Zip Code	Grades Served^	2018-19 NSPF Star Rating	2017-18 NSPF Star Rating	October 1 2021 Enrollment	% EL	% FRL	% IEP
Von Tobel MS	89115	MS	2	1	1051	28.9	>95.0	13.6
Watson ES	89031	ES	2	1	590	16.6	>95.0	15.5
West Prep ES	89106	ES	2	3	403	35.4	>95.0	<5.0
West Prep JSHS	89106	MS	1	1	1073	22.8	>95.0	16.4
Western HS	89107	HS	2	2	2814	30.4	>95.0	13.5
Whitney ES	89122	ES	1	1	358	24.5	>95.0	13.9
Wilhelm ES	89032	ES	1	2	471	16.3	>95.0	12.7
Williams T ES	89030	ES	2	3	606	51.3	>95.0	11.3
Williams W ES	89106	ES	1	1	269	12.6	>95.0	11.1
Wolfe ES	89031	ES	2	1	399	18.5	>95.0	19
Woodbury MS	89121	MS	1	2	836	23.5	>95.0	15.5
Woolley ES	89115	ES	2	2	583	35.3	>95.0	8
Wynn ES	89146	ES	2	1	756	44.4	>95.0	11.2



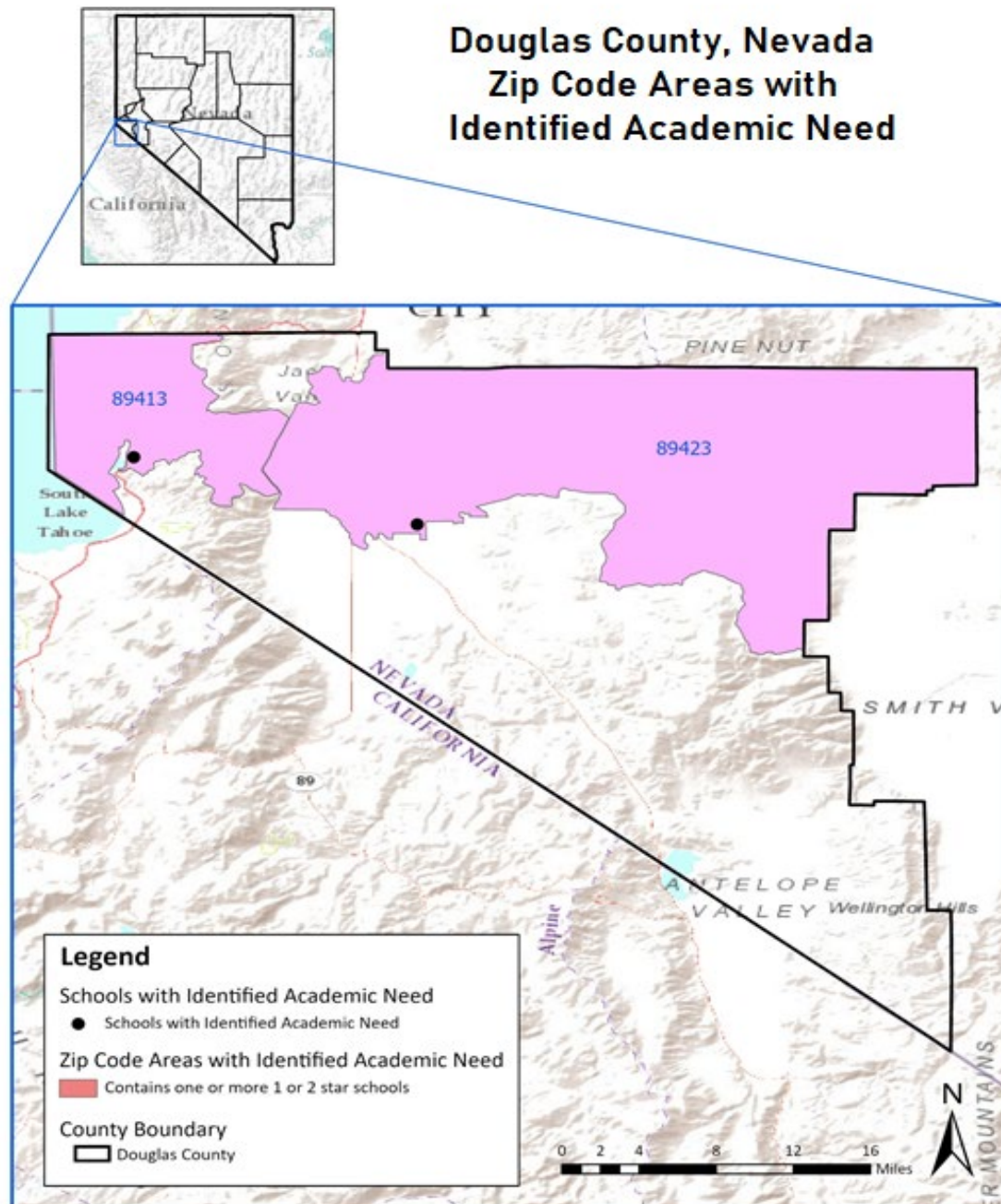
## District Snapshot

# Douglas County School District

## Analysis of Zip Codes with 1- and 2-Star Schools

### Summary

- The Douglas County School District serves about 5,256 students in 19 schools across 6 zip codes; and
- In the district, there are 2 schools rated 1 or 2 stars across 2 zip codes that serve about 139 students, or 2.6% of students in the district.





# District Snapshot

## Douglas County School District

### Analysis of Zip Codes with 1- and 2-Star Schools

#### Summary

- The Douglas County School District serves about 5,256 students in 19 schools across 6 zip codes; and
- In the district, there are 2 schools rated 1 or 2 stars across 2 zip codes that serve about 139 students, or 2.6% of students in the district.

Zip Codes with 1- and 2-Star Schools								
Zip Code	October 1 2021 Enrollment	Total # Schools	# 1- or 2-Star Schools	1- or 2-Star School Enrollment	% Enrolled in 1- or 2-Star Schools	# 1- or 2-Star Elem. Schools	# 1- or 2-Star Middle Schools	# 1- or 2-Star High Schools
89413	160	2	1	72	45.0	0	1	0
89423	2367	8	1	67	2.8	0	0	1

1- and 2-Star Schools								
School Name	Zip Code	Grades Served^	2018-19 NSPF Star Rating	2017-18 NSPF Star Rating	October 1 2021 Enrollment	% EL	% FRL	% IEP
ASPIRE HS	89423	HS	1	2	67	n<10	41.7	16.4
Whittell MS	89413	MS	2	3	72	n<10	23.6	n<10

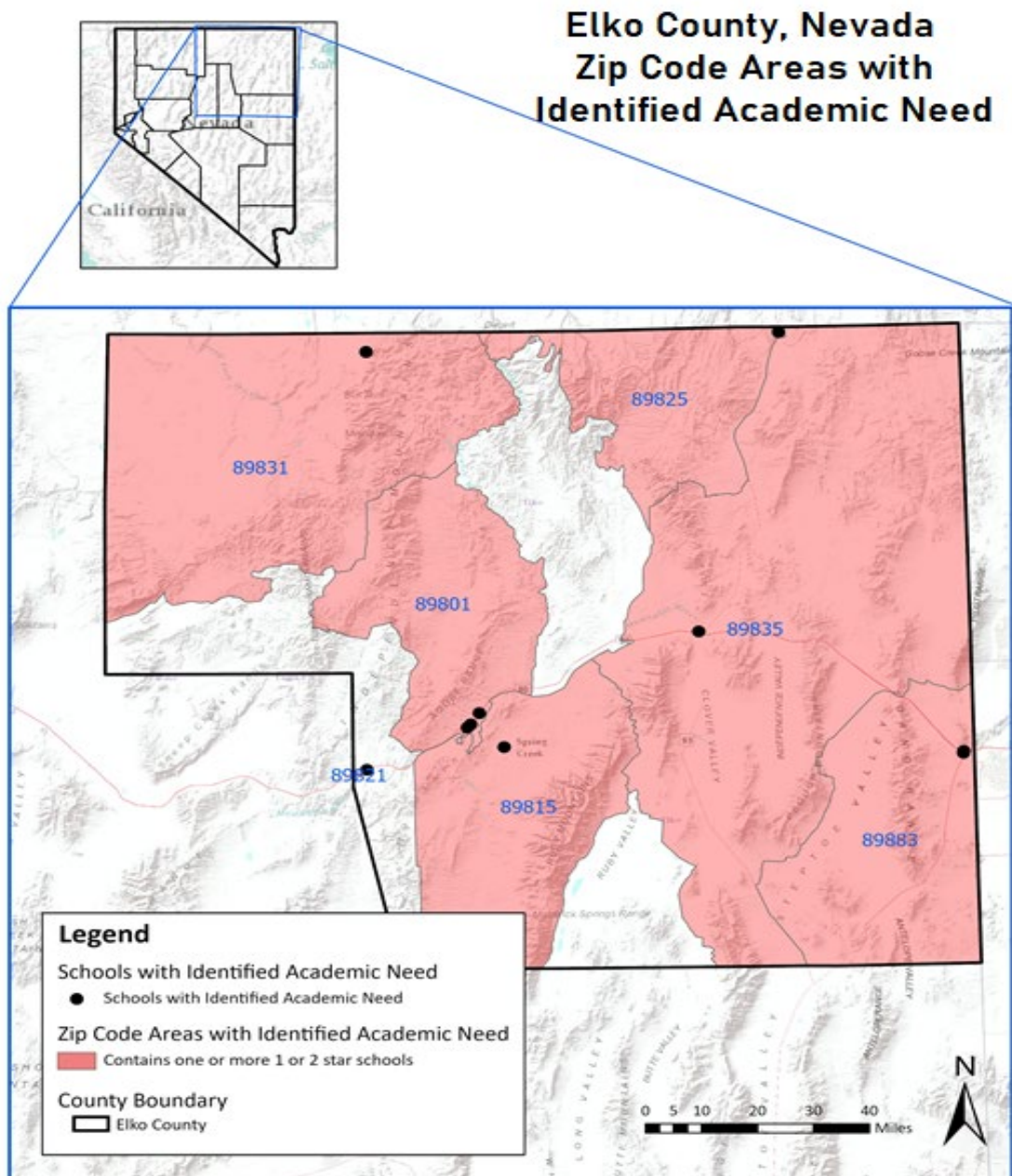
# District Snapshot

## Elko County School District

### Analysis of Zip Codes with 1- and 2-Star Schools

#### Summary

- The Elko County School District serves about 9,705 students in 38 schools across 8 zip codes; and
- In the district, there are 11 schools rated 1 or 2 stars across 7 zip codes that serve about 2,474 students, or 25.4% of students in the district.



Due to discrepancies in postal locations versus geographical zip codes in rural zip boundaries, 89821 on this map is 89822 in the following tables, while 89831 on this map is 89832 in the following tables.

# District Snapshot

## Elko County School District

### Analysis of Zip Codes with 1- and 2-Star Schools

#### Summary

- The Elko County School District serves about 9,705 students in 38 schools across 8 zip codes; and
- In the district, there are 11 schools rated 1 or 2 stars across 7 zip codes that serve about 2,474 students, or 25.4% of students in the district.

Zip Codes with 1- and 2-Star Schools								
Zip Code	October 1 2021 Enrollment	Total # Schools	# 1- or 2-Star Schools	1- or 2-Star School Enrollment	% Enrolled in 1- or 2-Star Schools	# 1- or 2-Star Elem. Schools	# 1- or 2-Star Middle Schools	# 1- or 2-Star High Schools
89801	4790	16	2	937	19.5	2	0	0
89815	2893	5	1	381	13.1	1	0	0
89822	330	4	2	223	67.5	1	1	0
89825	123	3	1	60	48.7	1	0	0
89832	293	3	2	199	67.9	1	1	0
89835	319	3	1	45	14.1	0	1	0
89883	942	3	2	629	66.7	1	1	0

1- and 2-Star Schools								
School Name	Zip Code	Grades Served^	2018-19 NSPF Star Rating	2017-18 NSPF Star Rating	October 1 2021 Enrollment	% EL	% FRL	% IEP
Carlin ES	89822	ES	2	2	171	0.0	41.5	20.4
Carlin JHS	89822	MS	1	2	52	0.0	46.1	n<10
Elko Grammar ES	89801	ES	2	3	275	9.0	38.9	18.1
Flagview Intermediate ES	89801	ES	2	2	662	9.8	32.4	12.6
Jackpot ES	89825	ES	2	2	60	23.3	28.3	n<10
Owyhee ES	89832	ES	1	1	159	n<10	>95.0	11.9
Owyhee JHS	89832	MS	1	1	40	n<10	>95.0	n<10
Sage ES	89815	ES	1	2	381	5.5	33.3	11.8
W Wendover ES	89883	ES	2	2	403	27.7	65.2	8.4
W Wendover MS	89883	MS	2	2	226	17.2	55.3	10.1
Wells JHS	89835	MS	2	3	45	n<10	24.4	24.4

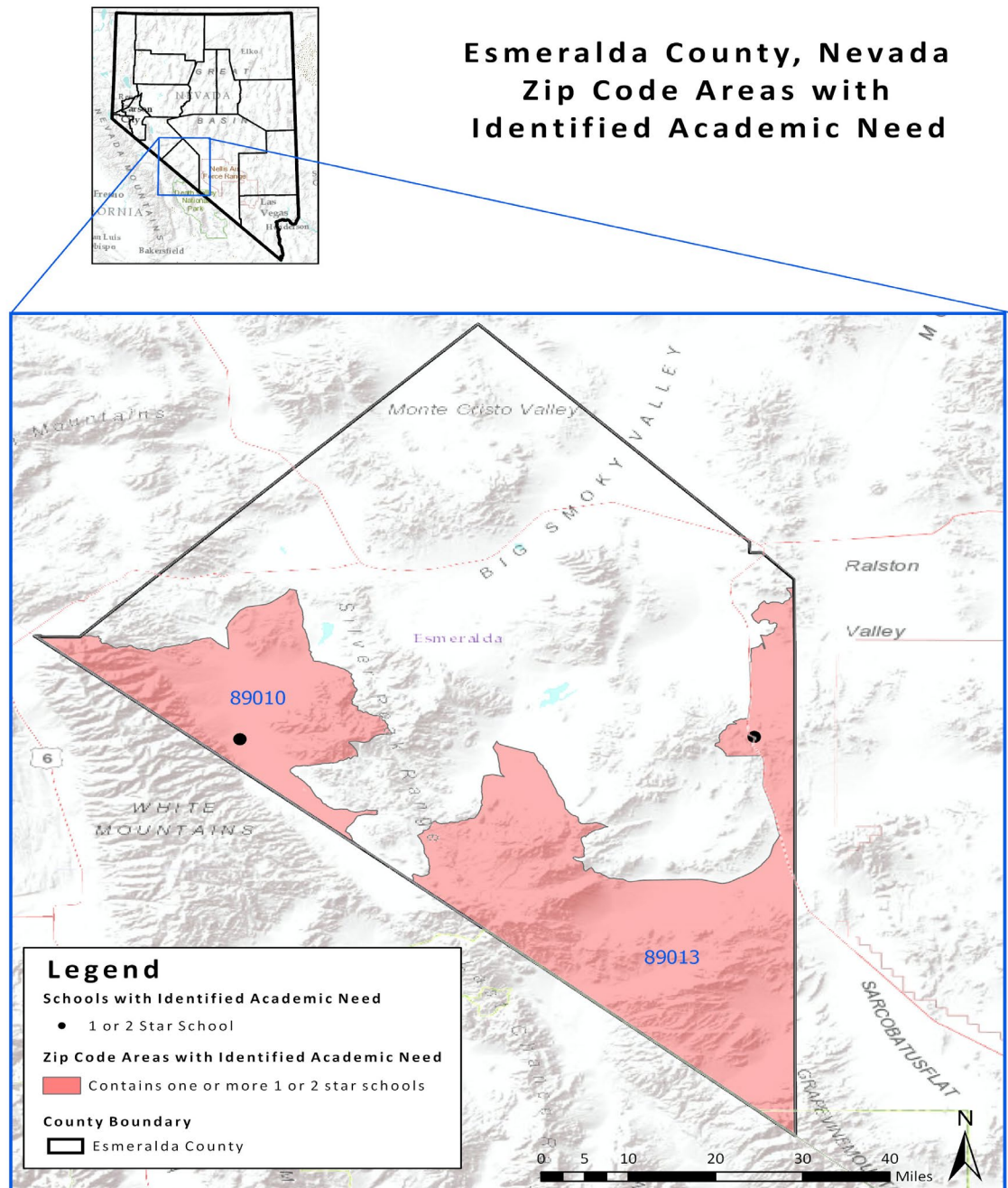
# District Snapshot

## Esmeralda County School District

### Analysis of Zip Codes with 1- and 2-Star Schools

#### Summary

- The Esmeralda County School District serves about 76 students in 7 schools across 3 zip codes; and
- In the district, there are 2 schools rated 1 or 2 stars across 2 zip codes that serve about 33 students, or 43.4% of students in the district.



# District Snapshot

## Esmeralda County School District

### Analysis of Zip Codes with 1- and 2-Star Schools

#### Summary

- The Esmeralda County School District serves about 76 students in 7 schools across 3 zip codes; and
- In the district, there are 2 schools rated 1 or 2 stars across 2 zip codes that serve about 33 students, or 43.4% of students in the district.

Zip Codes with 1- and 2-Star Schools								
Zip Code	October 1 2021 Enrollment	Total # Schools	# 1- or 2-Star Schools	1- or 2-Star School Enrollment	% Enrolled in 1- or 2-Star Schools	# 1- or 2-Star Elem. Schools	# 1- or 2-Star Middle Schools	# 1- or 2-Star High Schools
89010	42	3	1	22	52.3	1	0	0
89013	29	2	1	11	37.9	0	1	0

1- and 2-Star Schools								
School Name	Zip Code	Grades Served <sup>A</sup>	2018-19 NSPF Star Rating	2017-18 NSPF Star Rating	October 1 2021 Enrollment	% EL	% FRL	% IEP
Dyer ES	89010	ES	1	1	22	n<10	>95.0	n<10
Goldfield ES	89013	MS	1	Not Rated	11	0.0	>95.0	n<10



# District Snapshot

## Eureka County School District

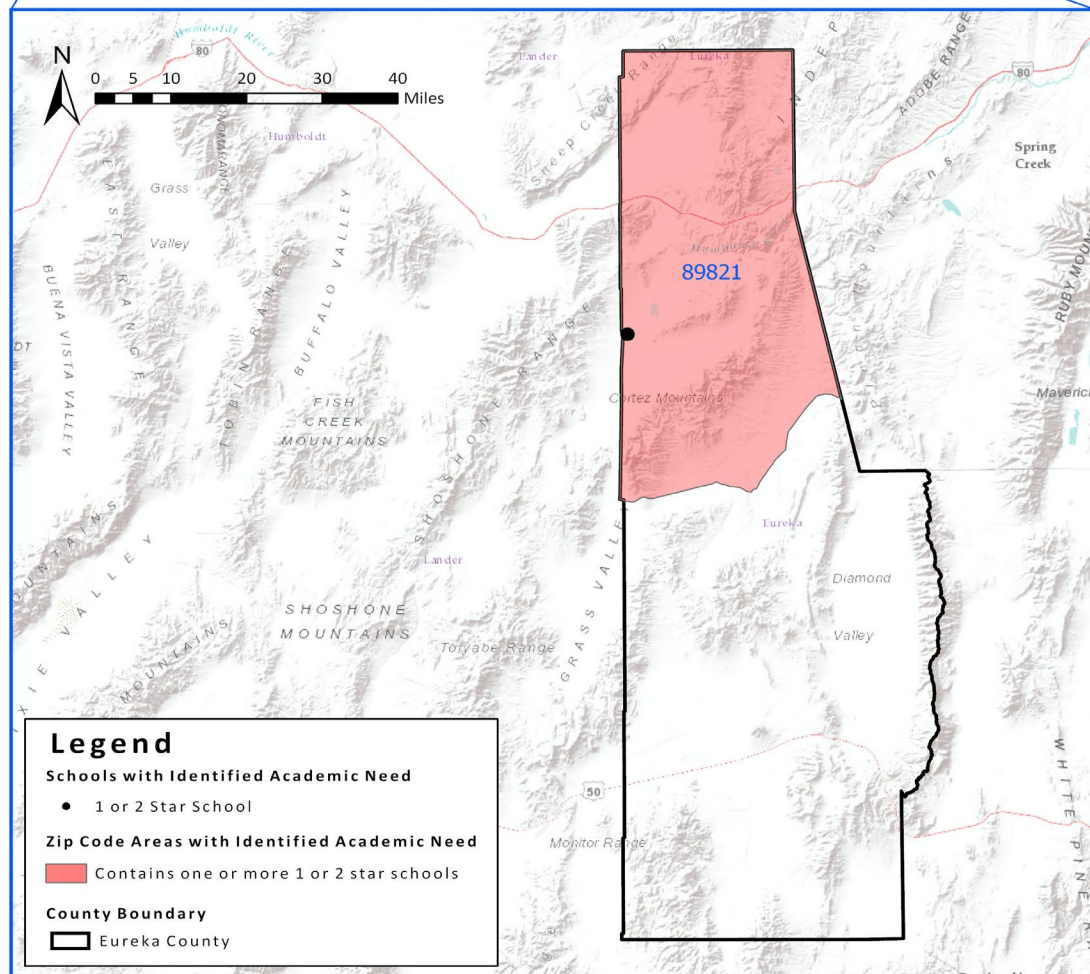
### Analysis of Zip Codes with 1- and 2-Star Schools

#### Summary

- The Eureka County School District serves about 336 students in 4 schools across 2 zip codes; and
- In the district, there is 1 school rated 1 or 2 stars in 1 zip code that serves 38 students, or 11.3% of students in the district.



#### Eureka County, Nevada Zip Code Areas with Identified Academic Need





# District Snapshot

## Eureka County School District

### Analysis of Zip Codes with 1- and 2-Star Schools

#### Summary

- The Eureka County School District serves about 336 students in 4 schools across 2 zip codes; and
- In the district, there is 1 school rated 1 or 2 stars in 1 zip code that serves 38 students, or 11.3% of students in the district.

**Zip Codes with 1- and 2-Star Schools**

Zip Code	October 1 2021 Enrollment	Total # Schools	# 1- or 2-Star Schools	1- or 2-Star School Enrollment	% Enrolled in 1- or 2-Star Schools	# 1- or 2-Star Elem. Schools	# 1- or 2-Star Middle Schools	# 1- or 2-Star High Schools
89821	38	1	1	38	100.0	1	0	0

**1- and 2-Star Schools**

School Name	Zip Code	Grades Served^	2018-19 NSPF Star Rating	2017-18 NSPF Star Rating	October 1 2021 Enrollment	% EL	% FRL	% IEP
Crescent Valley ES	89821	ES	2	3	38	0.0	39.4	n<10

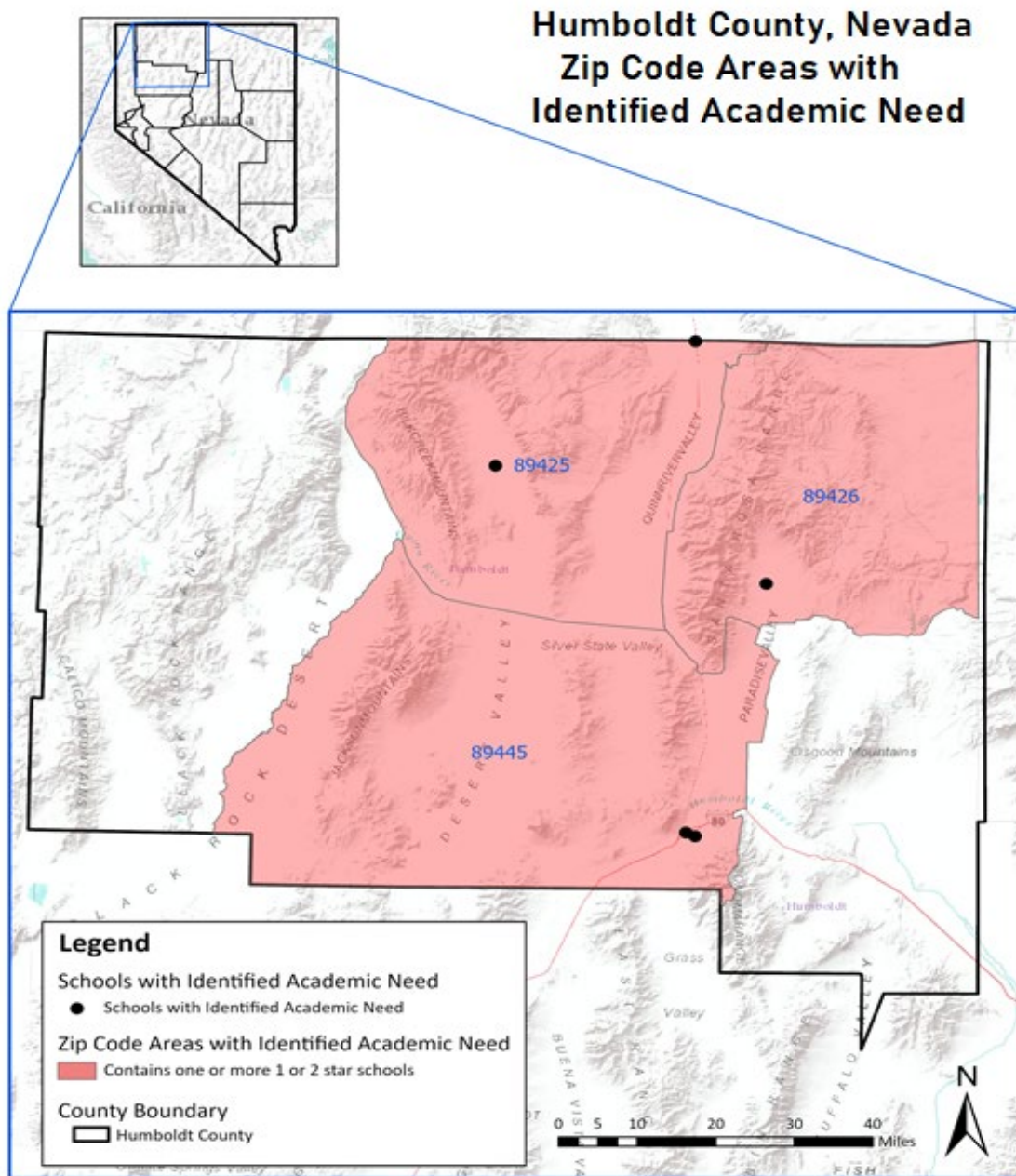
## District Snapshot

# Humboldt County School District

## Analysis of Zip Codes with 1- and 2-Star Schools

### Summary

- The Humboldt County School District serves about 3,244 students in 17 schools across 5 zip codes; and
- In the district, there are 6 schools rated 1 or 2 stars across 4 zip codes that serve about 1,148 students, or 35.3% of students in the district.



Due to discrepancies in postal locations versus geographical zip codes in rural zip boundaries, the dot at the top right in this map is in 89421 in the following tables.

# District Snapshot

## Humboldt County School District

### Analysis of Zip Codes with 1- and 2-Star Schools

#### Summary

- The Humboldt County School District serves about 3,244 students in 17 schools across 5 zip codes; and
- In the district, there are 6 schools rated 1 or 2 stars across 4 zip codes that serve about 1,148 students, or 35.3% of students in the district.

Zip Codes with 1- and 2-Star Schools								
Zip Code	October 1 2021 Enrollment	Total # Schools	# 1- or 2-Star Schools	1- or 2-Star School Enrollment	% Enrolled in 1- or 2-Star Schools	# 1- or 2-Star Elem. Schools	# 1- or 2-Star Middle Schools	# 1- or 2-Star High Schools
89421	103	3	2	75	72.8	1	1	0
89425	42	4	1	25	59.5	1	0	0
89426	32	2	1	25	78.1	1	0	0
89445	3060	6	2	1023	33.4	1	1	0

1- and 2-Star Schools								
School Name	Zip Code	Grades Served^	2018-19 NSPF Star Rating	2017-18 NSPF Star Rating	October 1 2021 Enrollment	% EL	% FRL	% IEP
French Ford MS	89445	ES	2	1	504	10.5	48.6	15
McDermitt ES	89421	ES	1	1	55	0.0	>95.0	18.1
McDermitt JHS	89421	MS	1	1	20	0.0	>95.0	n<10
Orovada ES	89425	ES	2	Not Rated	25	n<10	64.0	n<10
Paradise Valley ES	89426	ES	2	Not Rated	25	n<10	56.0	n<10
Winnemucca JHS	89445	MS	2	2	519	8.2	42.7	14.4

# District Snapshot

## Lander County School District

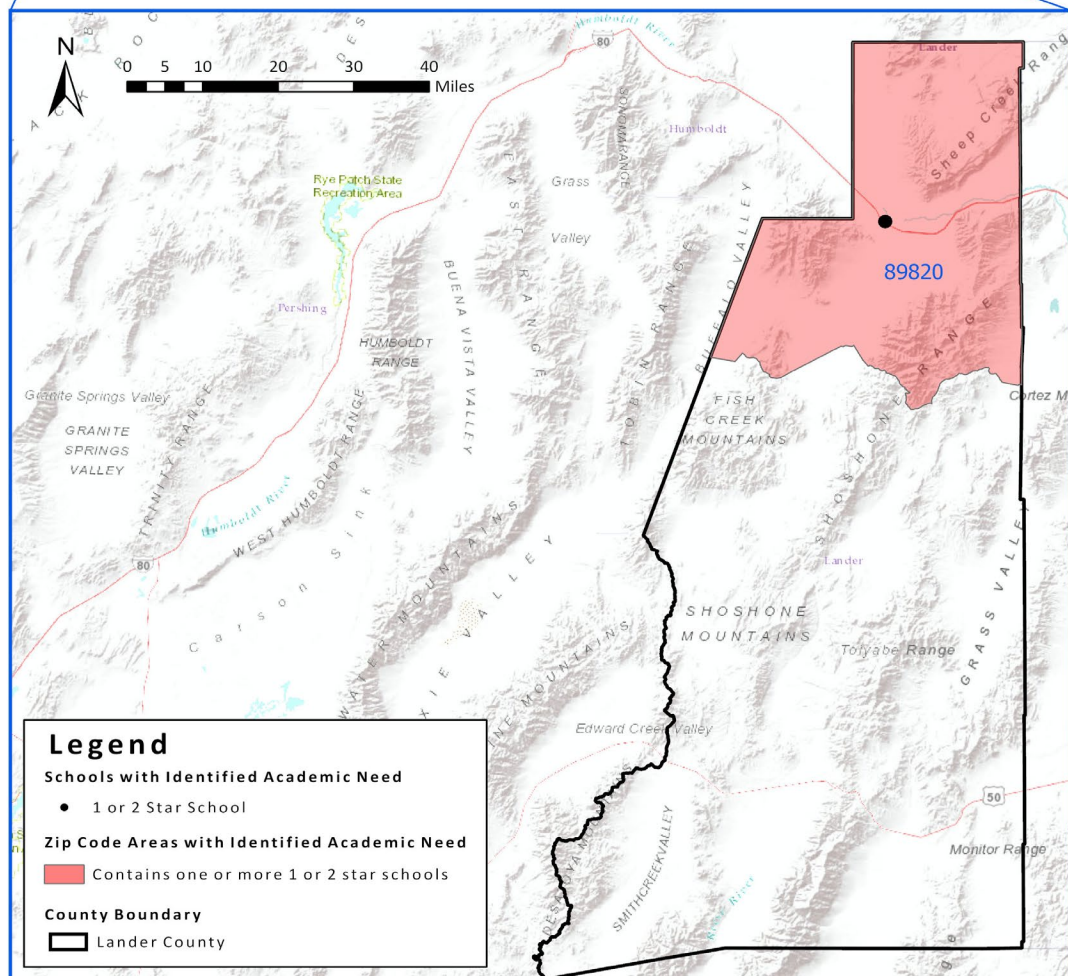
### Analysis of Zip Codes with 1- and 2-Star Schools

#### Summary

- The Lander County School District serves about 974 students in 5 schools across 2 zip codes; and
- In the district, there is 1 school rated 1 or 2 stars in 1 zip code that serves 367 students, or 37.6% of students in the district.



#### Lander County, Nevada Zip Code Areas with Identified Academic Need



# District Snapshot

## Lander County School District

### Analysis of Zip Codes with 1- and 2-Star Schools

#### Summary

- The Lander County School District serves about 974 students in 5 schools across 2 zip codes; and
- In the district, there is 1 school rated 1 or 2 stars in 1 zip code that serves 367 students, or 37.6% of students in the district.

Zip Codes with 1- and 2-Star Schools								
Zip Code	October 1 2021 Enrollment	Total # Schools	# 1- or 2-Star Schools	1- or 2-Star School Enrollment	% Enrolled in 1- or 2-Star Schools	# 1- or 2-Star Elem. Schools	# 1- or 2-Star Middle Schools	# 1- or 2-Star High Schools
89820	961	3	1	367	38.1	1	0	0

1- and 2-Star Schools								
School Name	Zip Code	Grades Served^	2018-19 NSPF Star Rating	2017-18 NSPF Star Rating	October 1 2021 Enrollment	% EL	% FRL	% IEP
Battle Mtn ES	89820	ES	2	4	367	5.4	41.1	9.8



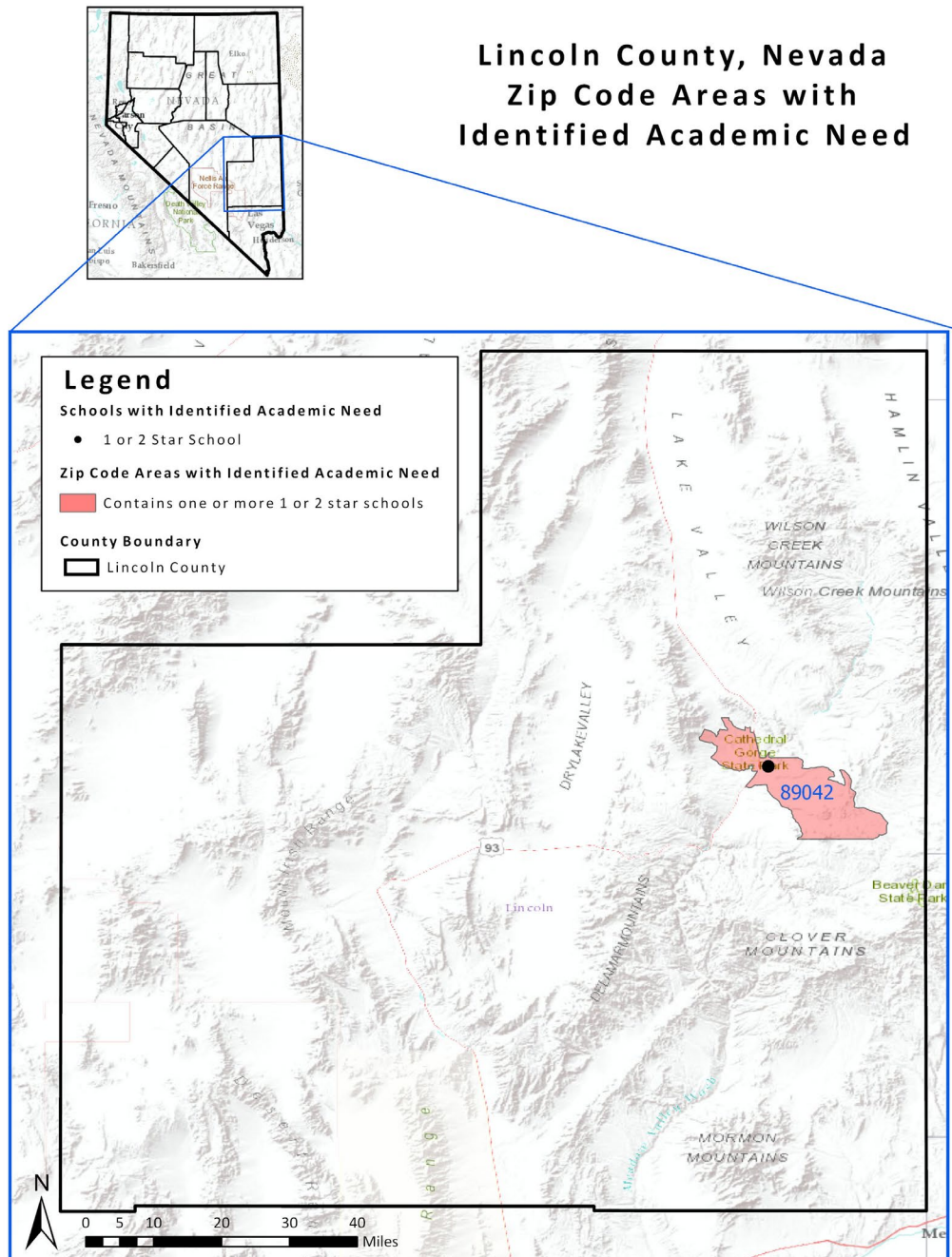
# District Snapshot

## Lincoln County School District

### Analysis of Zip Codes with 1- and 2-Star Schools

#### Summary

- The Lincoln County School District serves about 844 students in 10 schools across 4 zip codes; and
- In the district, there is 1 school rated 1 or 2 stars in 1 zip code that serves 69 students, or 8.1% of students in the district.





# District Snapshot

## Lincoln County School District

### Analysis of Zip Codes with 1- and 2-Star Schools

#### Summary

- The Lincoln County School District serves about 844 students in 10 schools across 4 zip codes; and
- In the district, there is 1 school rated 1 or 2 stars in 1 zip code that serves 69 students, or 8.1% of students in the district.

**Zip Codes with 1- and 2-Star Schools**

Zip Code	October 1 2021 Enrollment	Total # Schools	# 1- or 2-Star Schools	1- or 2-Star School Enrollment	% Enrolled in 1- or 2-Star Schools	# 1- or 2-Star Elem. Schools	# 1- or 2-Star Middle Schools	# 1- or 2-Star High Schools
89042	364	3	1	69	18.9	0	1	0

**1- and 2-Star Schools**

School Name	Zip Code	Grades Served^	2018-19 NSPF Star Rating	2017-18 NSPF Star Rating	October 1 2021 Enrollment	% EL	% FRL	% IEP
Meadow Valley MS	89042	MS	2	2	69	n<10	34.7	n<10

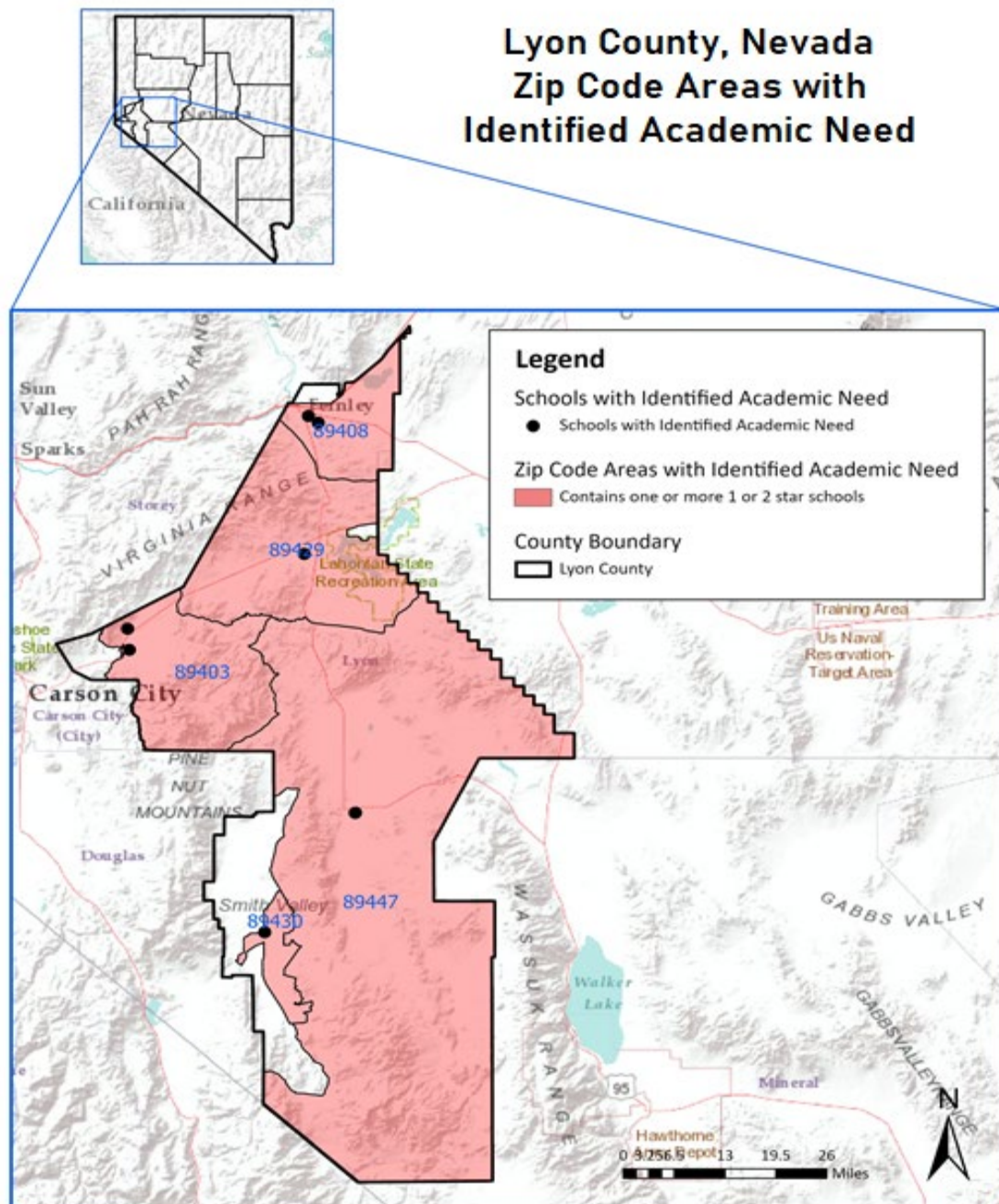
# District Snapshot

## Lyon County School District

### Analysis of Zip Codes with 1- and 2-Star Schools

#### Summary

- The Lyon County School District serves about 8,818 students in 21 schools across 5 zip codes; and
- In the district, there are 9 schools rated 1 or 2 stars across 5 zip codes that serve about 3,087 students, or 35.0% of students in the district.



# District Snapshot

## Lyon County School District

### Analysis of Zip Codes with 1- and 2-Star Schools

#### Summary

- The Lyon County School District serves about 8,818 students in 21 schools across 5 zip codes; and
- In the district, there are 9 schools rated 1 or 2 stars across 5 zip codes that serve about 3,087 students, or 35.0% of students in the district.

Zip Codes with 1- and 2-Star Schools								
Zip Code	October 1 2021 Enrollment	Total # Schools	# 1- or 2-Star Schools	1- or 2-Star School Enrollment	% Enrolled in 1- or 2-Star Schools	# 1- or 2-Star Elem. Schools	# 1- or 2-Star Middle Schools	# 1- or 2-Star High Schools
89403	2344	5	2	770	32.8	1	1	0
89408	4013	6	2	1001	24.9	2	0	0
89429	1011	4	1	338	33.4	1	0	0
89430	203	3	2	129	63.5	1	1	0
89447	1247	3	2	849	68.0	1	1	0

1- and 2-Star Schools								
School Name	Zip Code	Grades Served^	2018-19 NSPF Star Rating	2017-18 NSPF Star Rating	October 1 2021 Enrollment	% EL	% FRL	% IEP
Cottonwood ES	89408	ES	2	2	563	<5.0	37.1	14.3
Dayton Intermediate MS	89403	MS	2	2	379	5.8	25.5	11
Fernley ES	89408	ES	2	3	438	6.1	36.7	13.6
Silver Stage ES	89429	ES	2	1	338	n<10	>95.0	16.8
Smith Valley ES	89430	ES	2	3	98	n<10	21.4	n<10
Smith Valley MS	89430	MS	1	3	31	n<10	n<10	n<10
Sutro ES	89403	ES	2	2	391	11.2	31.4	10.9
Yerington ES	89447	ES	1	2	439	21.1	>95.0	10.7
Yerington Intermediate MS	89447	MS	2	2	410	12.9	>95.0	12.6

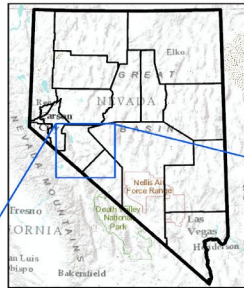
# District Snapshot

## Mineral County School District

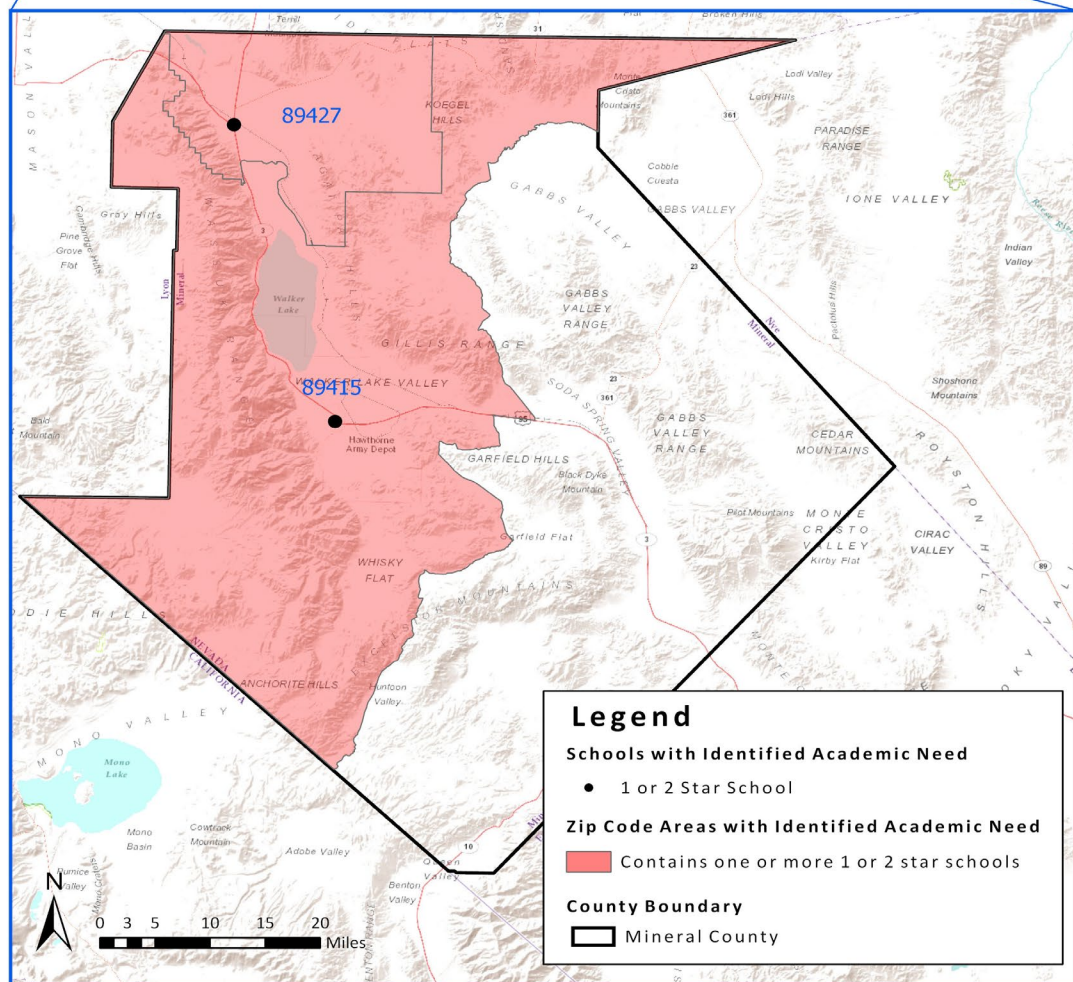
### Analysis of Zip Codes with 1- and 2-Star Schools

#### Summary

- The Mineral County School District serves about 564 students in 4 schools across 2 zip codes; and
- In the district, there are 2 schools rated 1 or 2 stars across 2 zip codes that serve about 151 students, or 26.7% of students in the district.



#### Mineral County, Nevada Zip Code Areas with Identified Academic Need



# District Snapshot

## Mineral County School District

### Analysis of Zip Codes with 1- and 2-Star Schools

#### Summary

- The Mineral County School District serves about 564 students in 4 schools across 2 zip codes; and
- In the district, there are 2 schools rated 1 or 2 stars across 2 zip codes that serve about 151 students, or 26.7% of students in the district.

Zip Codes with 1- and 2-Star Schools								
Zip Code	October 1 2021 Enrollment	Total # Schools	# 1- or 2-Star Schools	1- or 2-Star School Enrollment	% Enrolled in 1- or 2-Star Schools	# 1- or 2-Star Elem. Schools	# 1- or 2-Star Middle Schools	# 1- or 2-Star High Schools
89415	480	3	1	67	13.9	0	1	0
89427	84	1	1	84	100.0	1	0	0

1- and 2-Star Schools								
School Name	Zip Code	Grades Served^	2018-19 NSPF Star Rating	2017-18 NSPF Star Rating	October 1 2021 Enrollment	% EL	% FRL	% IEP
Hawthorne JHS	89415	MS	1	2	67	n<10	>95.0	16.4
Schurz ES	89427	ES	1	1	84	46.4	>95.0	n<10



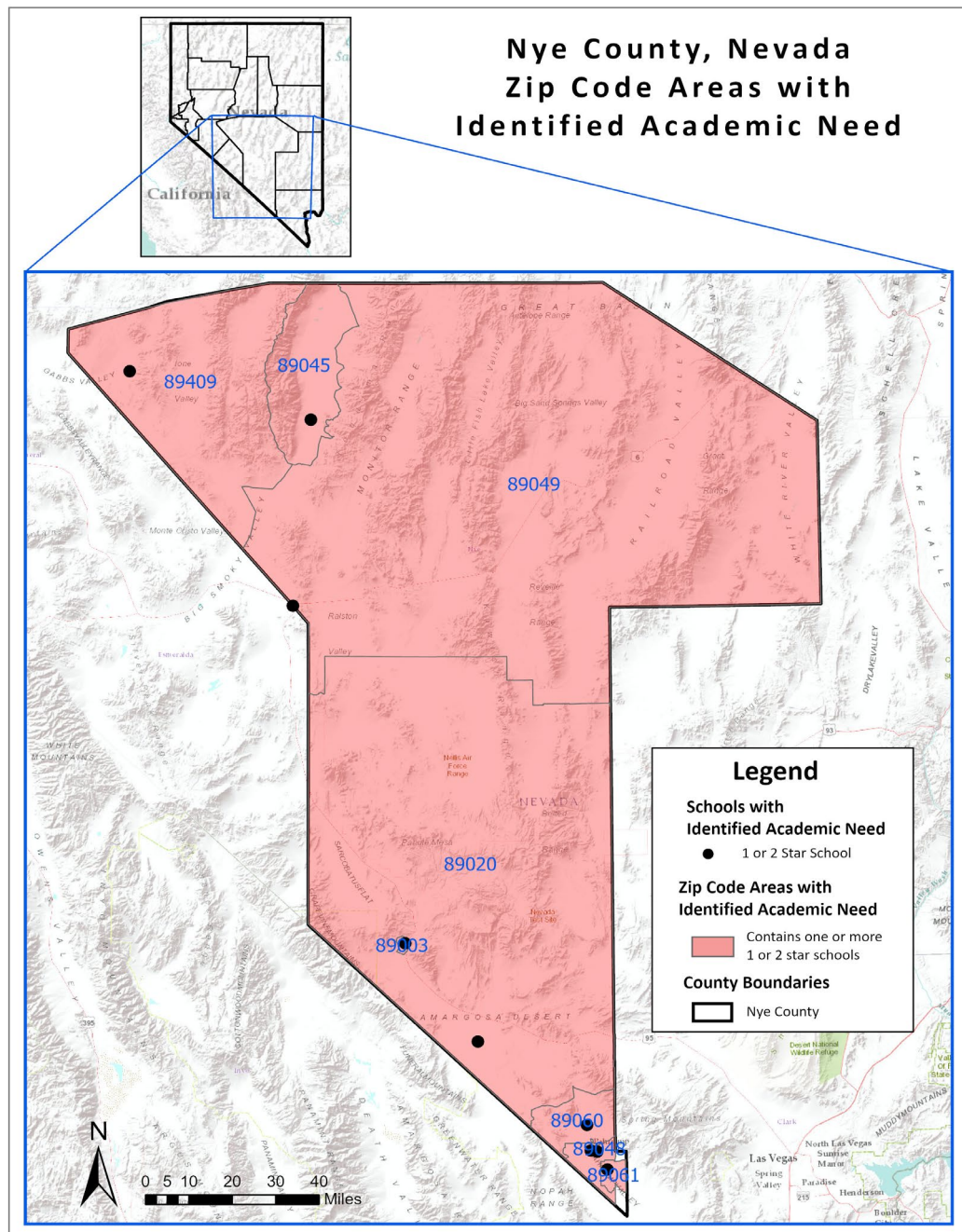
# District Snapshot

## Nye County School District

### Analysis of Zip Codes with 1- and 2-Star Schools

#### Summary

- The Nye County School District serves about 5,353 students in 24 schools across 9 zip codes; and
- In the district, there are 12 schools rated 1 or 2 stars across 8 zip codes that serve about 2,654 students, or 49.5% of students in the district.





# District Snapshot

## Nye County School District

### Analysis of Zip Codes with 1- and 2-Star Schools

#### Summary

- The Nye County School District serves about 5,353 students in 24 schools across 9 zip codes; and
- In the district, there are 12 schools rated 1 or 2 stars across 8 zip codes that serve about 2,654 students, or 49.5% of students in the district.

Zip Codes with 1- and 2-Star Schools								
Zip Code	October 1 2021 Enrollment	Total # Schools	# 1- or 2-Star Schools	1- or 2-Star School Enrollment	% Enrolled in 1- or 2-Star Schools	# 1- or 2-Star Elem. Schools	# 1- or 2-Star Middle Schools	# 1- or 2-Star High Schools
89003	195	3	1	24	12.3	0	1	0
89020	132	2	1	88	66.6	1	0	0
89045	263	3	2	177	67.3	1	1	0
89048	2016	5	3	647	32.0	1	1	1
89049	330	3	2	212	64.2	1	1	0
89060	1440	2	1	976	67.7	0	1	0
89061	939	2	1	514	54.7	1	0	0
89409	31	3	1	16	51.6	1	0	0

1- and 2-Star Schools								
School Name	Zip Code	Grades Served^	2018-19 NSPF Star Rating	2017-18 NSPF Star Rating	October 1 2021 Enrollment	% EL	% FRL	% IEP
Amargosa Valley ES	89020	ES	1	2	88	37.5	>95.0	n<10
Beatty MS	89003	MS	1	2	24	n<10	>95.0	n<10
Floyd ES	89061	ES	2	3	514	6.0	>95.0	12.8
Gabbs ES	89409	ES	1	Not Rated	16	0.0	>95.0	0
JG Johnson ES	89048	ES	2	1	439	7.5	>95.0	10.9
Pathways HS	89048	HS	1	1	138	n<10	>95.0	7.2
Pathways MS	89048	MS	1	1	70	n<10	>95.0	n<10
Rosemary Clarke MS	89060	MS	2	2	976	6.5	>95.0	14.8
Round Mtn ES	89045	ES	1	1	120	n<10	>95.0	n<10
Round Mtn MS	89045	MS	2	1	57	n<10	>95.0	n<10
Tonopah ES	89049	ES	2	1	146	n<10	>95.0	n<10
Tonopah MS	89049	MS	1	2	66	n<10	>95.0	n<10

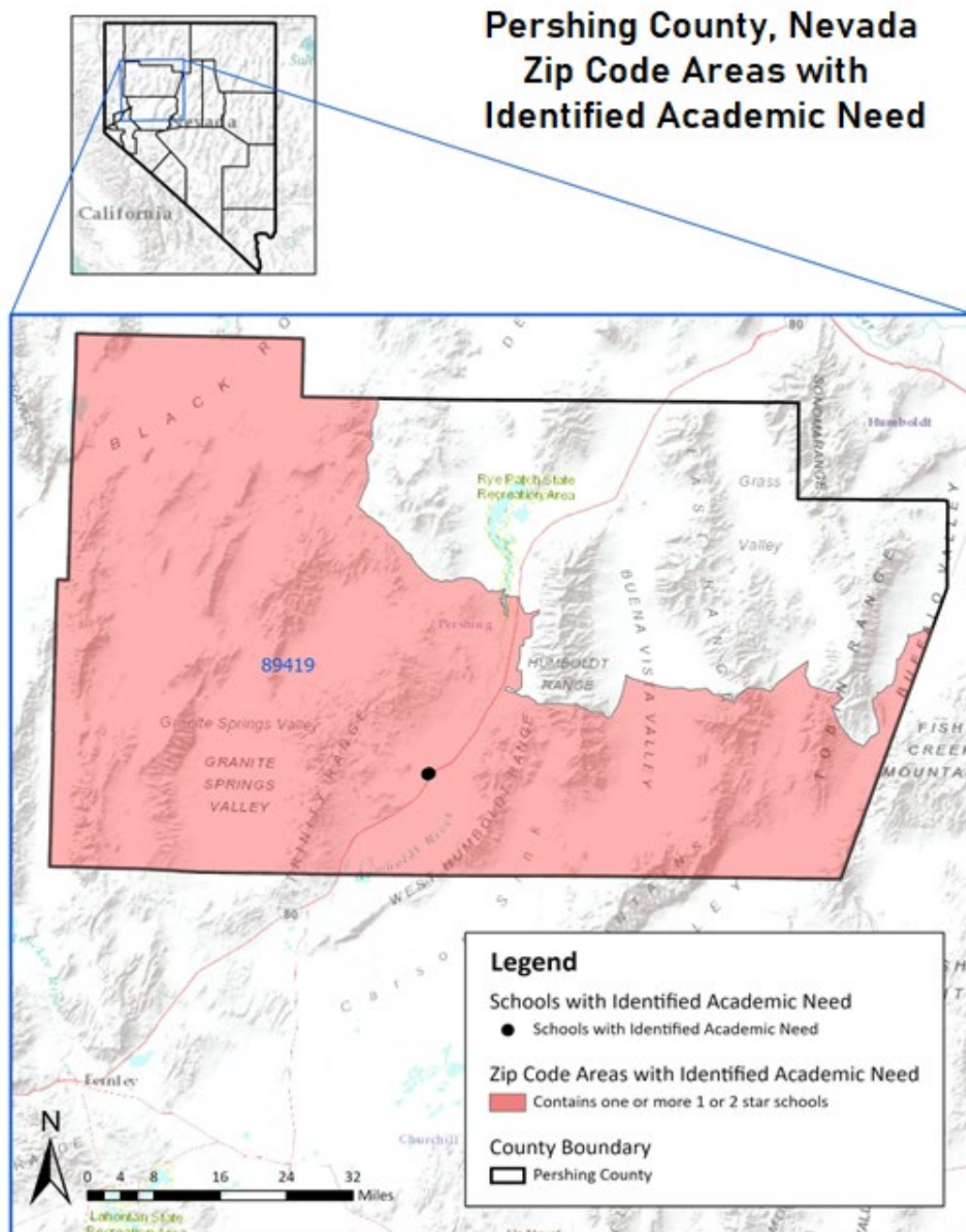
## District Snapshot

# Pershing County School District

## Analysis of Zip Codes with 1- and 2-Star Schools

### Summary

- The Pershing County School District serves about 661 students in 4 schools across 2 zip codes; and
- In the district, there are 2 schools rated 1 or 2 stars in 1 zip code that serve about 479 students, or 72.4% of students in the district.



# District Snapshot

## Pershing County School District

### Analysis of Zip Codes with 1- and 2-Star Schools

#### Summary

- The Pershing County School District serves about 661 students in 4 schools across 2 zip codes; and
- In the district, there are 2 schools rated 1 or 2 stars in 1 zip code that serve about 479 students, or 72.4% of students in the district.

**Zip Codes with 1- and 2-Star Schools**

Zip Code	October 1 2021 Enrollment	Total # Schools	# 1- or 2-Star Schools	1- or 2-Star School Enrollment	% Enrolled in 1- or 2-Star Schools	# 1- or 2-Star Elem. Schools	# 1- or 2-Star Middle Schools	# 1- or 2-Star High Schools
89419	645	3	2	479	74.2	1	1	0

**1- and 2-Star Schools**

School Name	Zip Code	Grades Served <sup>A</sup>	2018-19 NSPF Star Rating	2017-18 NSPF Star Rating	October 1 2021 Enrollment	% EL	% FRL	% IEP
Lovelock ES	89419	ES	2	2	329	9.1	>95.0	17.6
Pershing MS	89419	MS	1	1	150	n<10	58.0	14.6

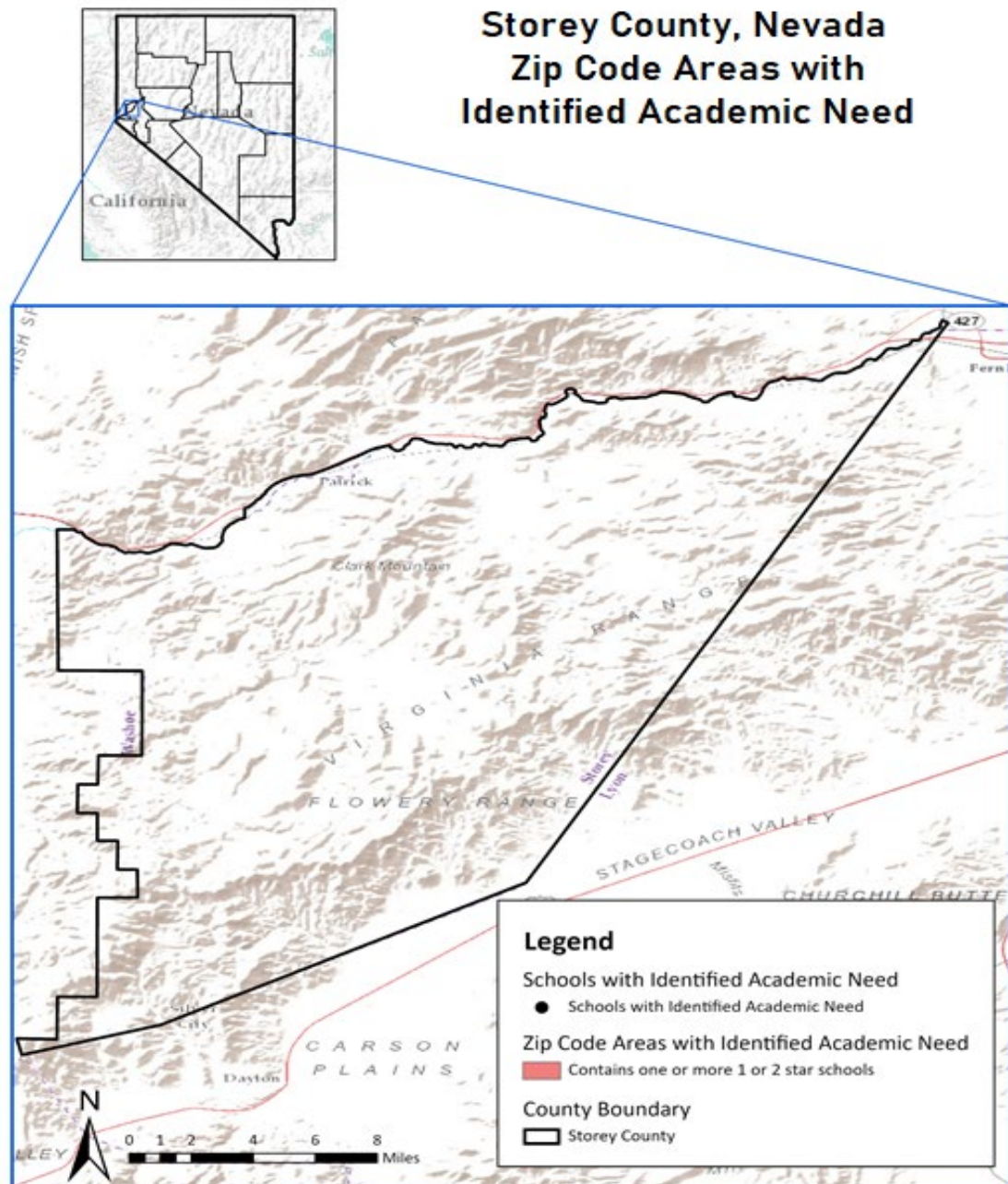
# District Snapshot

## Storey County School District

### Analysis of Zip Codes with 1- and 2-Star Schools

#### Summary

- The Storey County School District serves about 433 students in 4 schools across 2 zip codes; and
- In the district, there are 0 schools rated 1 or 2 stars.





# District Snapshot

## Washoe County School District

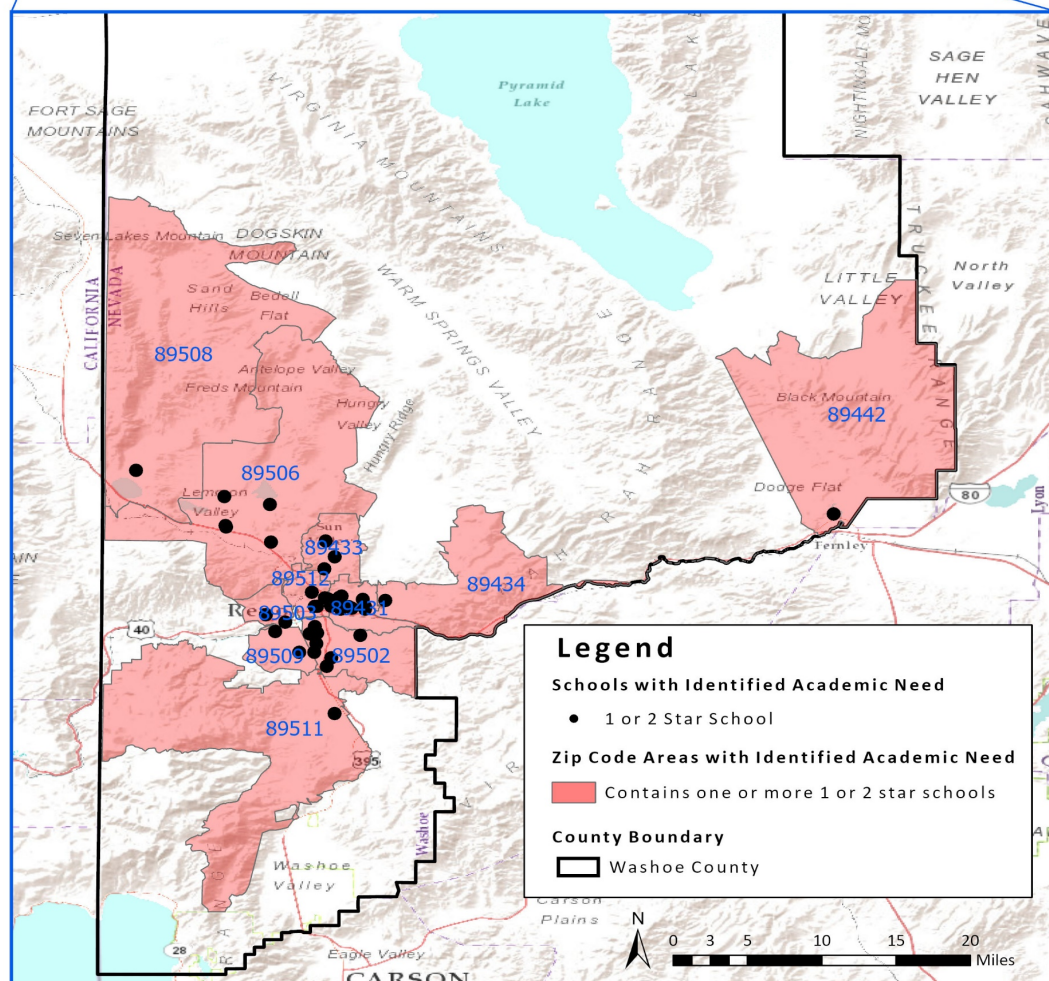
### Analysis of Zip Codes with 1- and 2-Star Schools

#### Summary

- The Washoe County School District serves about 64,610 students in 125 schools across 19 zip codes; and
- In the district, there are 39 schools rated 1 or 2 stars across 11 zip codes that serve about 17,481 students, or 27.0% of students in the district.



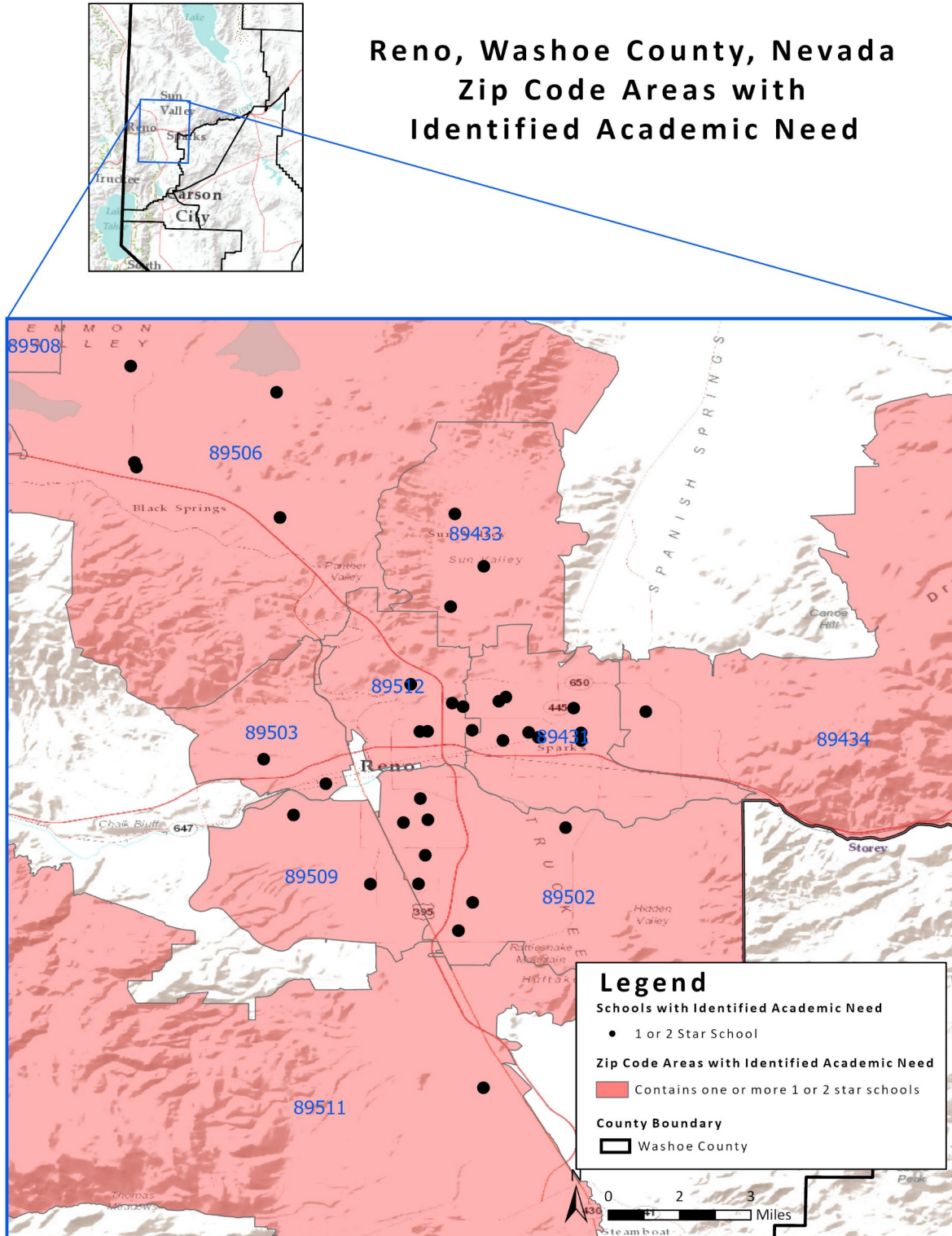
#### Washoe County, Nevada Zip Code Areas with Identified Academic Need



# District Snapshot

## Washoe County School District

### Analysis of Zip Codes with 1- and 2-Star Schools





# District Snapshot

## Washoe County School District

### Analysis of Zip Codes with 1- and 2-Star Schools

#### Summary

- The Washoe County School District serves about 64,610 students in 125 schools across 19 zip codes; and
- In the district, there are 39 schools rated 1 or 2 stars across 11 zip codes that serve about 17,481 students, or 27.0% of students in the district.

Zip Codes with 1- and 2-Star Schools								
Zip Code	October 1 2021 Enrollment	Total # Schools	# 1- or 2-Star Schools	1- or 2-Star School Enrollment	% Enrolled in 1- or 2-Star Schools	# 1- or 2-Star Elem. Schools	# 1- or 2-Star Middle Schools	# 1- or 2-Star High Schools
89431	5271	11	8	4262	80.8	5	2	1
89433	2780	5	3	1329	47.8	3	0	0
89434	4498	6	1	464	10.3	1	0	0
89442	103	1	1	103	100.0	1	0	0
89502	8412	21	8	2853	33.9	6	1	1
89503	2125	6	2	406	19.1	1	0	1
89506	6771	10	5	3539	52.2	4	1	0
89508	1385	3	1	282	20.3	1	0	0
89509	4431	11	2	485	10.9	1	0	1
89511	4369	11	2	35	0.8	1	1	0
89512	5265	11	6	3723	70.7	4	1	1

1- and 2-Star Schools								
School Name	Zip Code	Grades Served^	2018-19 NSPF Star Rating	2017-18 NSPF Star Rating	October 1 2021 Enrollment	% EL	% FRL	% IEP
Allen ES	89433	ES	2	2	420	42.6	>95.0	14
Anderson ES	89509	ES	1	1	387	25.0	>95.0	14.7
Bailey CH ES	89502	ES	2	2	185	38.3	>95.0	8.1
Bennett ES	89433	ES	2	2	397	37.7	>95.0	19.3
Booth ES	89502	ES	1	1	331	23.5	>95.0	20.2
Cannan ES	89512	ES	2	1	377	29.9	>95.0	9
Desert Heights ES	89506	ES	2	1	465	20.2	>95.0	23.4
Dilworth MS	89431	MS	2	2	629	15.8	>95.0	22.5
Duncan ES	89512	ES	2	1	328	46.9	>95.0	20.7
Dunn ES	89434	ES	2	3	464	15.0	45.6	11.8
Elmcrest ES	89503	ES	2	2	314	16.5	>95.0	18.7
enCompass CS HS	89509	HS	1	1	98	n<10	51.0	29.5
Gomes ES	89508	ES	2	2	282	8.1	42.5	12.4
Greenbrae ES	89431	ES	2	2	332	36.4	>95.0	11.7
High Desert CS ES	89512	ES	2	2	302	5.9	26.8	11.9
Hug HS	89512	HS	2	2	1663	28.8	>95.0	16.5

Tables display zip codes and schools based on 2018-19 Nevada School Performance Framework (NSPF) star ratings, while enrollment is as of October 1, 2021. In general, elementary schools (ES) serve grades K-5, middle schools (MS) serve grades 6-8, and high schools (HS) serve grades 9-12. To protect student privacy, rates for population sizes less than 10 are displayed as "n<10", and enrollment rates less than 5% or greater than 95% are shown as <5.0 and >95.0, respectively.

January 28, 2022

# District Snapshot

## Washoe County School District

### Analysis of Zip Codes with 1- and 2-Star Schools

#### Summary

- The Washoe County School District serves about 64,610 students in 125 schools across 19 zip codes; and
- In the district, there are 39 schools rated 1 or 2 stars across 11 zip codes that serve about 17,481 students, or 27.0% of students in the district.

1- and 2-Star Schools (continued)								
School Name	Zip Code	Grades Served^	2018-19 NSPF Star Rating	2017-18 NSPF Star Rating	October 1 2021 Enrollment	% EL	% FRL	% IEP
Innovations HS	89503	HS	1	1	92	n<10	36.9	11.9
Inspire Academy HS	89502	HS	1	Not Rated	87	n<10	>95.0	17.2
Lemmon Valley ES	89506	ES	2	3	653	24.0	>95.0	15.3
Lincoln Park ES	89431	ES	2	2	401	31.1	>95.0	14.4
Loder ES	89502	ES	2	1	484	47.3	>95.0	11.3
Mariposa CS	89502	ES	2	2	154	37.0	>95.0	7.1
Mathews ES	89512	ES	2	1	471	40.9	>95.0	15.9
Mitchell ES	89431	ES	2	2	320	33.1	>95.0	15.6
Natchez ES	89442	ES	1	1	103	n<10	>95.0	14.5
O'Brien MS	89506	MS	1	2	1021	17.1	37.8	16
Picollo ES	89511	ES	1	Not Rated	21	n<10	>95.0	>95.0
Picollo MS	89511	MS	1	Not Rated	14	n<10	>95.0	92.8
Risley ES	89431	ES	2	3	396	36.6	>95.0	10.8
Smith Alice ES	89506	ES	2	2	723	23.5	>95.0	16.4
Smith Kate ES	89431	ES	2	2	219	50.2	>95.0	9.1
Smithridge ES	89502	ES	2	2	549	44.9	>95.0	12.5
Sparks HS	89431	HS	2	3	1292	25.7	47.8	13.7
Sparks MS	89431	MS	2	2	673	30.1	>95.0	15.8
Stead ES	89506	ES	2	1	677	26.7	>95.0	12.4
Sun Valley ES	89433	ES	2	2	512	43.7	>95.0	9.9
Traner MS	89512	MS	2	1	582	25.6	>95.0	17.1
Vaughn MS	89502	MS	2	1	770	25.3	>95.0	15.8
Veterans Memorial ES	89502	ES	1	2	293	40.2	>95.0	17

## District Snapshot

# White Pine County School District

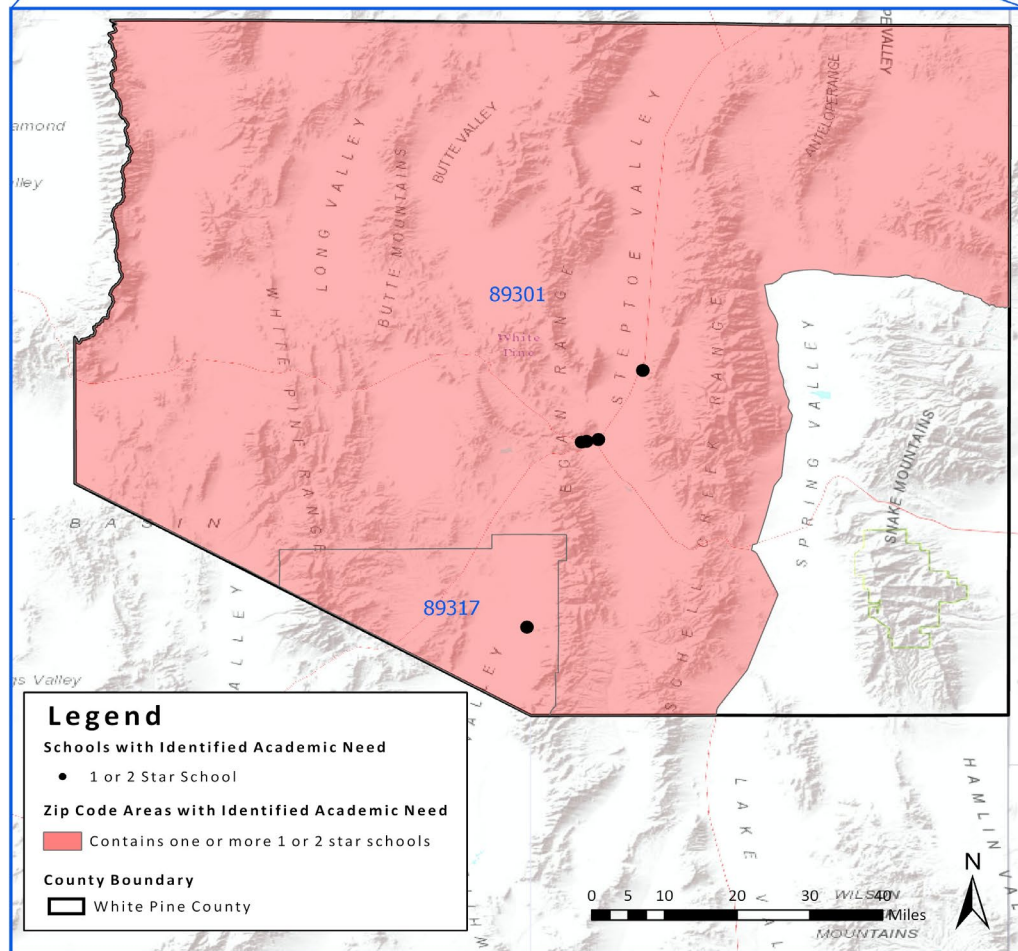
### Analysis of Zip Codes with 1- and 2-Star Schools

## Summary

- The White Pine County School District serves about 1,206 students in 9 schools across 4 zip codes; and
- In the district, there are 7 schools rated 1 or 2 stars across 3 zip codes that serve about 830 students, or 68.8% of students in the district.



### White Pine County, Nevada Zip Code Areas with Identified Academic Need



The 89318 zip code shown in the following table is not displayed on this map as it is located within the 89301 zip code boundary.

# District Snapshot

## White Pine County School District

### Analysis of Zip Codes with 1- and 2-Star Schools

#### Summary

- The White Pine County School District serves about 1,206 students in 9 schools across 4 zip codes; and
- In the district, there are 7 schools rated 1 or 2 stars across 3 zip codes that serve about 830 students, or 68.8% of students in the district.

Zip Codes with 1- and 2-Star Schools								
Zip Code	October 1 2021 Enrollment	Total # Schools	# 1- or 2-Star Schools	1- or 2-Star School Enrollment	% Enrolled in 1- or 2-Star Schools	# 1- or 2-Star Elem. Schools	# 1- or 2-Star Middle Schools	# 1- or 2-Star High Schools
89301	989	4	3	630	63.7	1	1	1
89317	107	3	3	107	100.0	1	1	1
89318	93	1	1	93	100.0	1	0	0

1- and 2-Star Schools								
School Name	Zip Code	Grades Served^	2018-19 NSPF Star Rating	2017-18 NSPF Star Rating	October 1 2021 Enrollment	% EL	% FRL	% IEP
Lund ES	89317	ES	1	2	52	n<10	38.4	n<10
Lund JSHS	89317	MS	1	5	26	0.0	50.0	n<10
Lund JSHS	89317	HS	1	1	29	0.0	34.4	n<10
McGill ES	89318	ES	2	2	93	n<10	>95.0	16.1
Norman ES	89301	ES	1	1	370	n<10	>95.0	16.7
Steptoe Valley HS	89301	HS	1	1	34	0.0	>95.0	n<10
White Pine MS	89301	MS	2	3	226	n<10	>95.0	19.9

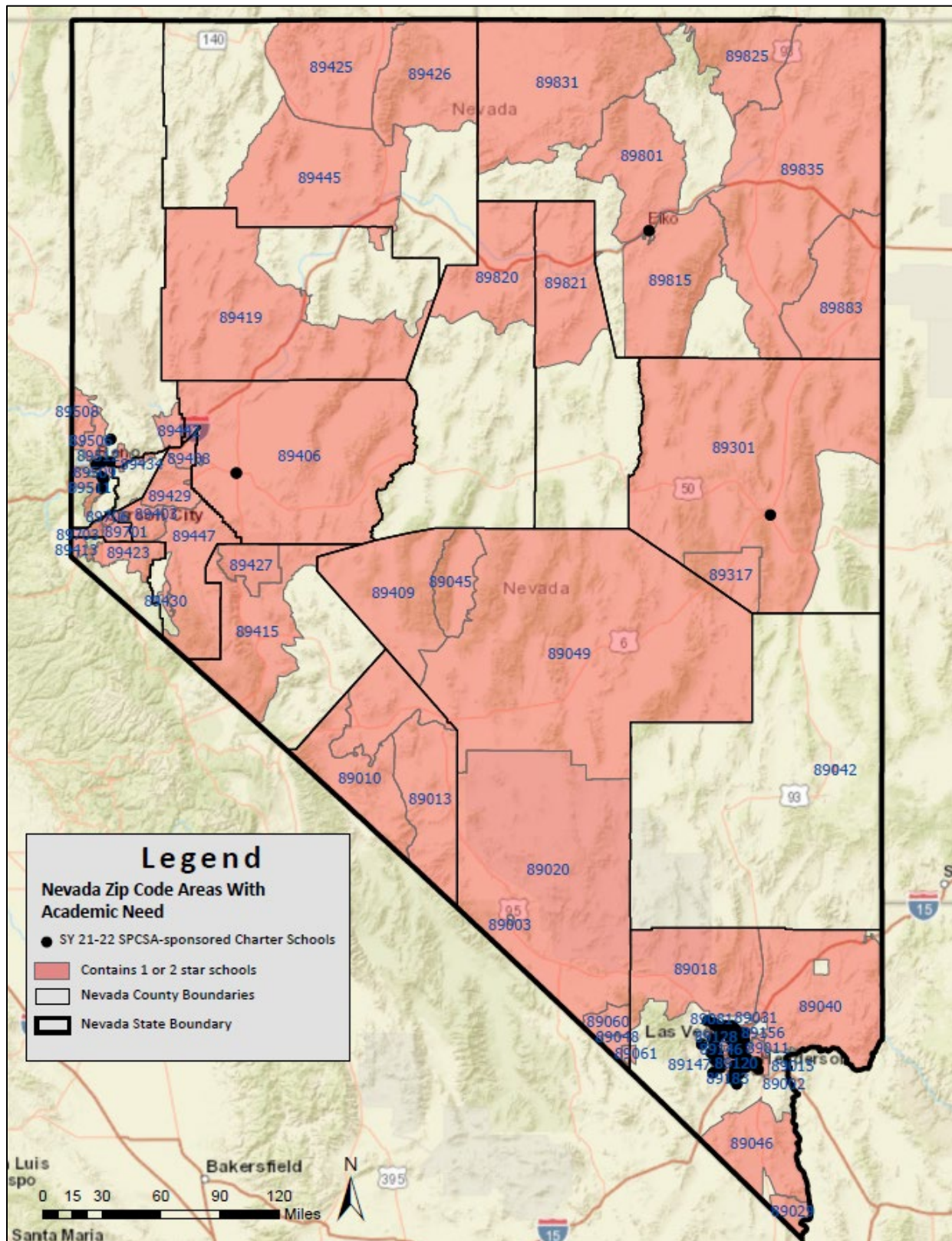
*Appendix B:*

*Location of Current SPCSA-  
Sponsored Charter Schools*



An interactive map of SPCSA-sponsored charter schools can be found on the [SPSCA's website](#). Additionally, the maps and table below show the location of all current SPCSA-sponsored schools.

### SPCSA-Sponsored Schools: Statewide

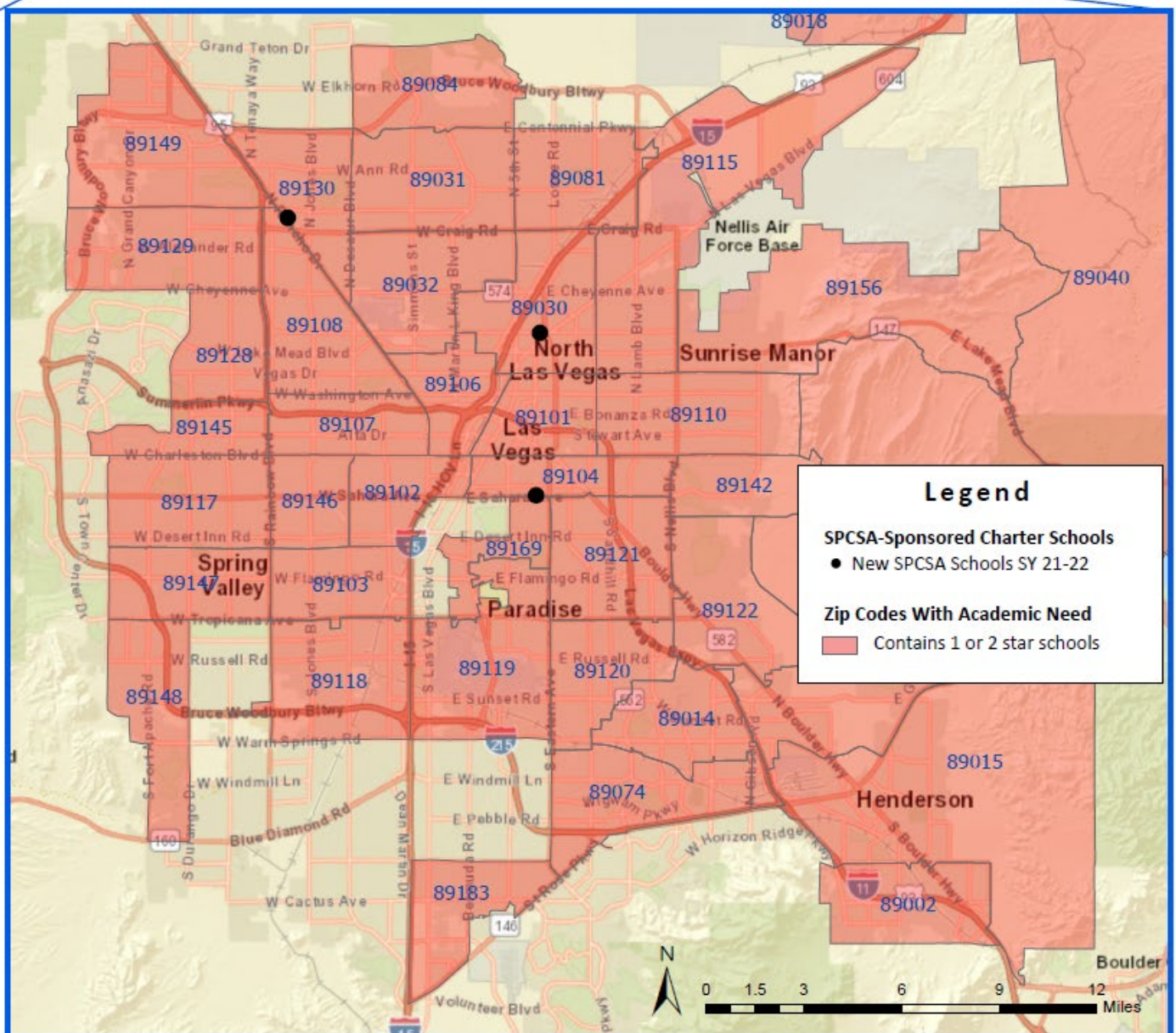




## SPCSA-Sponsored Schools: Las Vegas Area

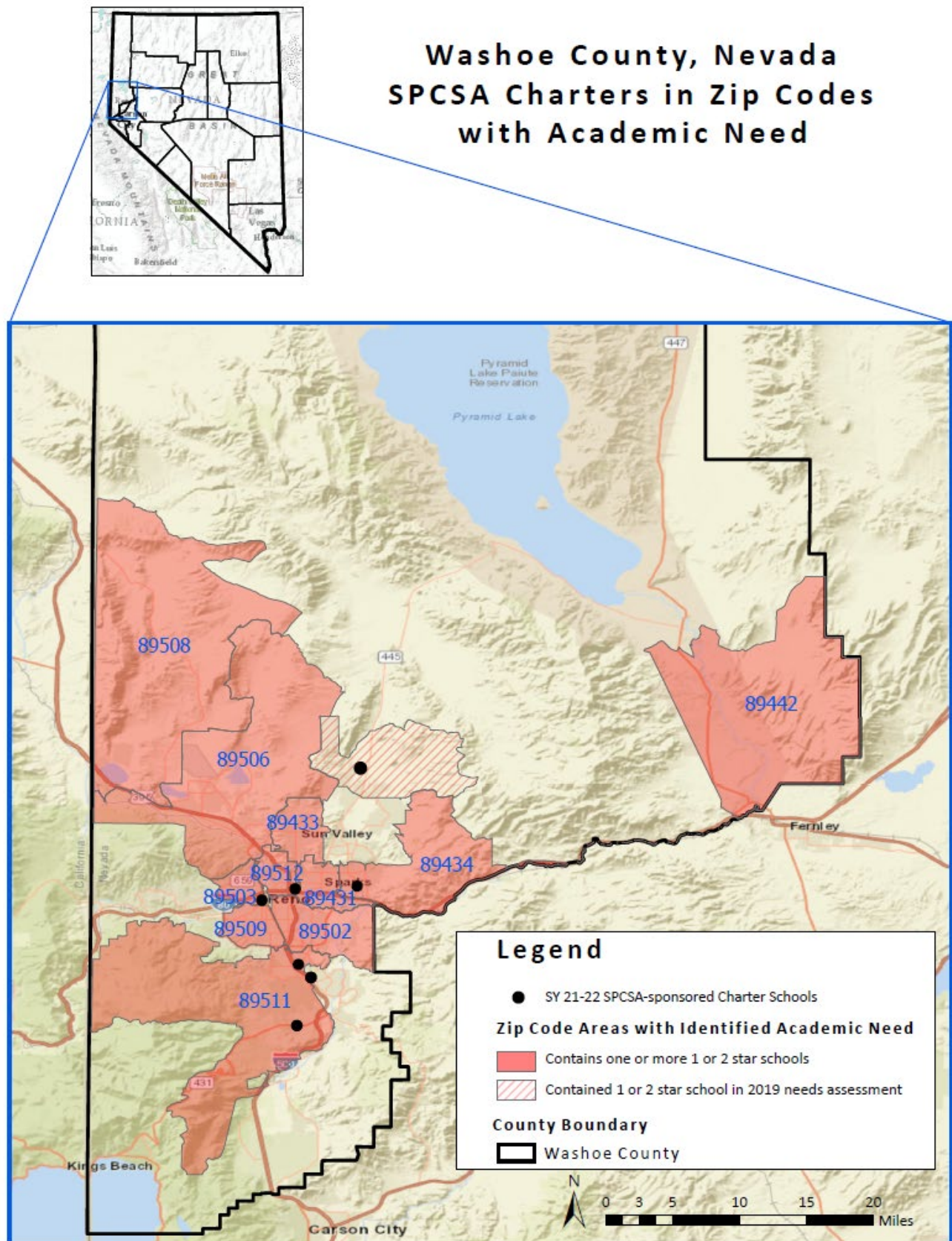


**Las Vegas Area  
New SPCSA Charters in Zip  
Codes with Academic Need  
(Clark County, Nevada)**





## SPCSA-Sponsored Schools: Washoe County



## SPCSA-Sponsored Schools as of the 2021-22 School Year, Sorted by Zip Code

Zip Code	School Name	Address	2021 Enrollment
89011	Legacy Traditional School Cadence	325 Inflection St, Henderson, NV, 89011	1393
89011	Sports Leadership and Management Academy	1095 Fielders St, Henderson, NV, 89011	1626
89011	Coral Academy of Science Las Vegas Eastgate	7777 Eastgate Rd, Henderson, NV, 89011	637
89014	Silver Sands Montessori Charter School	1841 Whitney Mesa Dr, Henderson, NV, 89014	259
89015	Pinecrest Academy of Nevada Horizon	1360 S Boulder Hwy, Henderson, NV, 89015	871
89015	Pinecrest Academy of Nevada Cadence	225 Grand Cadence Dr, Henderson, NV, 89015	2078
89015	Nevada State High School Downtown Henderson	303 S Water St Ste 120, Henderson, NV 89015	106
89015	Signature Preparatory	498 S Boulder Hwy, Henderson, NV, 89015	971
89030	CIVICA Academy	1501 E Carey Ave, N Las Vegas, NV, 89030	576
89031	Legacy Traditional School North Valley	5024 Valley Dr, N Las Vegas, NV, 89031	1346
89044	Pinecrest Academy of Nevada Inspirada	2840 Via Contessa, Henderson, NV, 89044	1186
89044	Pinecrest Academy of Nevada Sloan Canyon	675 E Dale Ave, Henderson, NV, 89044	1706
89048	Somerset Academy of Las Vegas Aliante	6475 Valley Dr, N Las Vegas, NV, 89048	1120
89052	Coral Academy of Science Las Vegas Sandy Ridge	1051 Sandy Ridge Ave, Henderson, NV, 89052	842
89074	Somerset Academy of Las Vegas Stephanie	50 N Stephanie St, Henderson, NV, 89074	957
89074	Nevada State High School Henderson	233 N Stephanie St, Henderson, NV, 89074	258
89074	Coral Academy of Science Las Vegas Windmill	2150 Windmill Pkwy, Henderson, NV, 89074	396
89081	Freedom Classical Academy	777 E Ann Rd, N Las Vegas, NV, 89081	1013
89081	Somerset Academy of Las Vegas Losee	4650 Losee Rd, N Las Vegas, NV, 89081	2195
89084	Somerset Academy of Las Vegas North Las Vegas	385 W Centennial Pkwy, N Las Vegas, NV, 89084	1205
89101	Nevada State High School Downtown	300 N 13th St, Las Vegas, NV, 89101	54
89106	Democracy Prep at the Agassi Campus	1201 W Lake Mead Blvd, Las Vegas, NV, 89106	1147
89108	Somerset Academy of Las Vegas Lone Mountain	4491 N Rainbow Blvd, Las Vegas, NV, 89108	986
89110	Futuro Academy	920 N Lamb Blvd, Las Vegas, NV, 89110	476
89110	Equipo Academy	4131 E Bonanza Rd, Las Vegas, NV, 89110	832
89110	Mater Academy of Nevada Bonanza	4760 E Bonanza Rd, Las Vegas, NV, 89110	1074
89110	Mater Academy of Nevada East Las Vegas	3900 E Bonanza Rd, Las Vegas, NV 89110	1573
89113	Legacy Traditional School Southwest	7077 W Wigwam Ave, Las Vegas, NV, 89113	1531
89113	Amplus Academy Durango	8377 W Patrick Ln, Las Vegas, NV, 89113	1570
89113	Nevada State High School Southwest	7885 W Sunset Rd Suite 170, Las Vegas, NV, 89113	121
89115	Nevada State High School Sunrise	2425 N Lamb Blvd Ste 130, Las Vegas, NV, 89115	80
89118	Amplus Academy Rainbow	7077 W Patrick Ln, Las Vegas, NV 89118	673
89119	Girls Athletic Leadership School	4220 S Maryland Pkwy, Las Vegas, NV 89119	103
89121	Mater Academy of Nevada Mountain Vista	3445 Mountain Vista St, Las Vegas, NV, 89121	1057
89121	Discovery Charter School Sandhill	3975 S Sandhill Rd, Las Vegas, NV, 89121	101
89121	Nevada Virtual Academy	4801 S Sandhill Rd, Las Vegas, NV, 89121	2027
89121	Nevada Rise Academy	2525 Emerson Ave, Las Vegas, NV, 89121	369
89123	Coral Academy of Science Las Vegas Tamarus	8185 Tamarus St, Las Vegas, NV, 89123	395
89128	Doral Academy of Nevada Fire Mesa	2568 Fire Mesa St, Las Vegas, NV, 89128	980
89130	Founders Academy of Las Vegas	5730 W Alexander Rd, Las Vegas, NV, 89130	900
89130	Leadership Academy of Nevada	7495 W Azure Dr #209, Las Vegas, NV, 89130	287
89130	Quest Preparatory Academy Northwest	4025 N Rancho Dr, Las Vegas, NV, 89130	475
89130	Nevada State High School Northwest	7240 W Azure Dr Ste 110, Las Vegas, NV 89130	118
89130	Explore Academy	4660 N Rancho Dr, Las Vegas, NV 89130	192
89130	TEACH Las Vegas	4660 N Rancho Blvd, Las Vegas, NV 89130	112
89131	Somerset Academy of Las Vegas Sky Pointe	7038 Sky Pointe Dr, Las Vegas, NV, 89131	2138
89131	Coral Academy of Science Las Vegas Centennial Hills	7951 Deer Springs Way, Las Vegas, NV, 89131	651
89134	Discovery Charter School Hillpointe	8941 Hillpointe Rd, Las Vegas, NV, 89134	359
89138	Doral Academy of Nevada Red Rock	626 Crossbridge Dr, Las Vegas, NV, 89138	2189
89139	Doral Academy of Nevada West Pebble	6435 W Pebble Rd, Las Vegas, NV, 89139	976
89145	Nevada State High School Summerlin	850 S Durango Dr Ste 100, Las Vegas, NV, 89145	176
89147	Doral Academy of Nevada Saddle	9625 W Saddle Ave, Las Vegas, NV, 89147	983
89147	Beacon Academy of Nevada	7360 W Flamingo Rd, Las Vegas, NV, 89147	355
89149	Imagine School at Mountain View	6610 Grand Montecito Pkwy, Las Vegas, NV, 89149	654
89156	Nevada Prep Charter School	1780 Betty Lane, Las Vegas, NV, 89156	215
89166	Somerset Academy of Las Vegas Skye Canyon	8151 N Shaumber Rd, Las Vegas, NV, 89166	995

<b>Zip Code</b>	<b>School Name</b>	<b>Address</b>	<b>2021 Enrollment</b>
89178	Doral Academy of Nevada Cactus	9025 W Cactus Ave, Las Vegas, NV, 89178	982
89183	Pinecrest Academy of Nevada St Rose	1385 E Cactus Ave, Las Vegas, NV, 89183	1008
89191	Coral Academy of Science Las Vegas Nellis AFB	107 Stafford Dr, Las Vegas, NV, 89191	860
89301	Learning Bridge Charter School	400 E 13th St, Ely, NV 89301	195
89406	Oasis Academy	920 W Williams Ave Ste 100, Fallon, NV, 89406	714
89434	Alpine Academy Charter School	605 Boxington Way Ste 112, Sparks, NV, 89434	135
89441	Pinecrest Academy of Northern Nevada	1150 Silent Sparrow Dr, Sparks, NV, 89441	868
89501	Honors Academy of Literature	195 N Arlington Ave, Reno, NV, 89501	220
89511	Doral Academy of Northern Nevada	3725 Butch Cassidy Dr, Reno, NV, 89511	925
89511	Nevada State High School Meadowwood	7530 Longley Ln Ste 103, Reno, NV, 89511	50
89512	Mater Academy of Northern Nevada	2680 E 9th St, Reno, NV, 89512	483
89521	Nevada Connections Academy	555 Double Eagle Ct Ste 2000, Reno, NV, 89521	1114
89801	Elko Institute for Academic Achievement	1031 Railroad St Ste 107, Elko, NV, 89801	196



# *Appendix C:*

## *Definitions of Star Ratings*

*The following pages include definitions of each star rating level from the Nevada School Performance Framework.*

*Source: [2019 Nevada School Performance Framework Procedures Manual](#)*

## Elementary and Middle School NSPF Star Rating Descriptions

Category	Policy Descriptors
★ ★ ★ ★ ★	Recognizes a <b>superior</b> school that exceeds expectations for all students and subgroups on every indicator category with little or no exception. A five-star school demonstrates superior academic performance and growth with no opportunity gaps. The school does not fail to meet expectations for any group on any indicator. These schools are recognized for distinguished performance.
★ ★ ★ ★	Recognizes a <b>commendable</b> school that has performed well for all students and subgroups. A four-star school demonstrates satisfactory to strong academic performance for all students. Further, the school is successfully promoting academic progress for all student groups as reflected in closing opportunity gaps. The school does not fail to meet expectations for any group on any indicator. A school identified for targeted support and improvement is not eligible to be classified as a four-star school or higher.
★ ★ ★	Identifies an <b>adequate</b> school that has met the state’s standard for performance. The all-students group has met expectations for academic achievement or growth. Subgroups meet expectations for academic achievement or growth with little exception; however, no group is far below standard. The school must submit an improvement plan that identifies supports tailored to subgroups and indicators that are below standard. A school identified for comprehensive support and improvement is not eligible to be classified as a three-star school or higher. Schools identified for targeted support and improvement are eligible to be classified as three-star schools.
★ ★	Identifies a school that has <b>partially met</b> the state’s standard for performance. Students and subgroups often meet expectations for academic performance or growth but may have multiple areas that require improvement. Areas requiring significant improvement are uncommon. The school must submit an improvement plan that identifies supports tailored to subgroups and indicators that are below standard. A two-star school in consecutive years is subject to state intervention. A school identified for targeted support and improvement or comprehensive support and improvement is eligible to be classified as a two-star school.
★	Identifies a school that has <b>not met</b> the state’s standard for performance. Students and subgroups are inconsistent in achieving performance standards. A one-star school has multiple areas that require improvement including an urgent need to address areas that are significantly below standard. The school must submit an improvement plan that identifies supports tailored to subgroups and indicators that are below standard. The school is subject to state interventions.

## High School NSPF Star Rating Descriptions

Category	Policy Descriptors
★ ★ ★ ★ ★	Recognizes a <b>superior</b> school that exceeds expectations for all students and subgroups on every indicator category with little or no exception. A five-star school demonstrates superior academic performance and a superior graduation rate. The school does not fail to meet expectations for any group on any indicator. These schools are recognized for distinguished performance.
★ ★ ★ ★	Recognizes a <b>commendable</b> school that has performed well for all students and subgroups. A four-star school demonstrates satisfactory to strong academic performance for all students. Further, the school's graduation rate meets expectations. The school does not fail to meet expectations for any group on any indicator. A school identified for targeted support and improvement is not eligible to be classified as a four-star school or higher.
★ ★ ★	Identifies an <b>adequate</b> school that has met the state's standard for performance. The all-students group has met expectations for academic achievement. Subgroups meet expectations for academic achievement or show progress with little exception; however, no group is far below standard. The school must submit an improvement plan that identifies supports tailored to subgroups and indicators that are below standard. A school identified for comprehensive support and improvement is not eligible to be classified as a three-star school or higher. A school identified for targeted support and improvement is eligible to be classified as a three-star school.
★ ★	Identifies a school that has <b>partially met</b> the state's standard for performance. Students and subgroups often meet expectations for academic performance but may have multiple areas that require improvement. Areas requiring significant improvement are uncommon. The school must submit an improvement plan that identifies supports tailored to subgroups and indicators that are below standard. A two-star school in consecutive years is subject to state intervention. A school identified for targeted support and improvement or comprehensive support and improvement is eligible to be classified as a two-star school.
★	Identifies a school that has <b>not met</b> the state's standard for performance. Students and subgroups are inconsistent in achieving performance standards. A one-star school has multiple areas that require improvement including an urgent need to address areas that are significantly below standard. The school must submit an improvement plan that identifies supports tailored to subgroups and indicators that are below standard. The school is subject to state interventions.

# *Appendix D:*

## *Stakeholder Engagement*

Pursuant to NRS 388A.220, the State Public Charter School Authority conducted the first iteration of the Academic and Demographic Needs Assessment in the spring and early summer of 2019 in collaboration with school districts and the Nevada Department of Education. This included several meetings, email communication, and presentations to school district boards of trustees and the State Board of Education between May of 2019 and October of 2019. In late 2019, the SPCSA convened a working group to support in the development of the Growth Management Plan. Where applicable, feedback from those meetings was incorporated into the December 2019 version of the Needs Assessment.

In the fall of 2020, the SPCSA reconvened the working group, now referred to as the Community Working Group. This Community Working Group meets at least quarterly to provide input on how charter schools and the SPCSA can partner with communities and stakeholders to meet educational needs. This includes an explicit focus on equitable access and creating school environments that support the needs of diverse learners. The Community Working Group includes a broad set of stakeholders including representatives of the NDE, local school districts, local municipalities, community organizations, and charter schools. Updates and revisions to the Academic and Demographic Needs Assessment were discussed during the October 7, 2021 meeting of the Community Working Group. In addition, the SPCSA has been proactive in communicating with and seeking feedback from local school district leaders, both through meetings of the Nevada Association of School Superintendents and additional meetings with specific school district staff.