

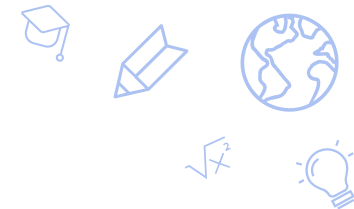


Academic and Demographic Needs Assessment



December 3, 2021





Overview

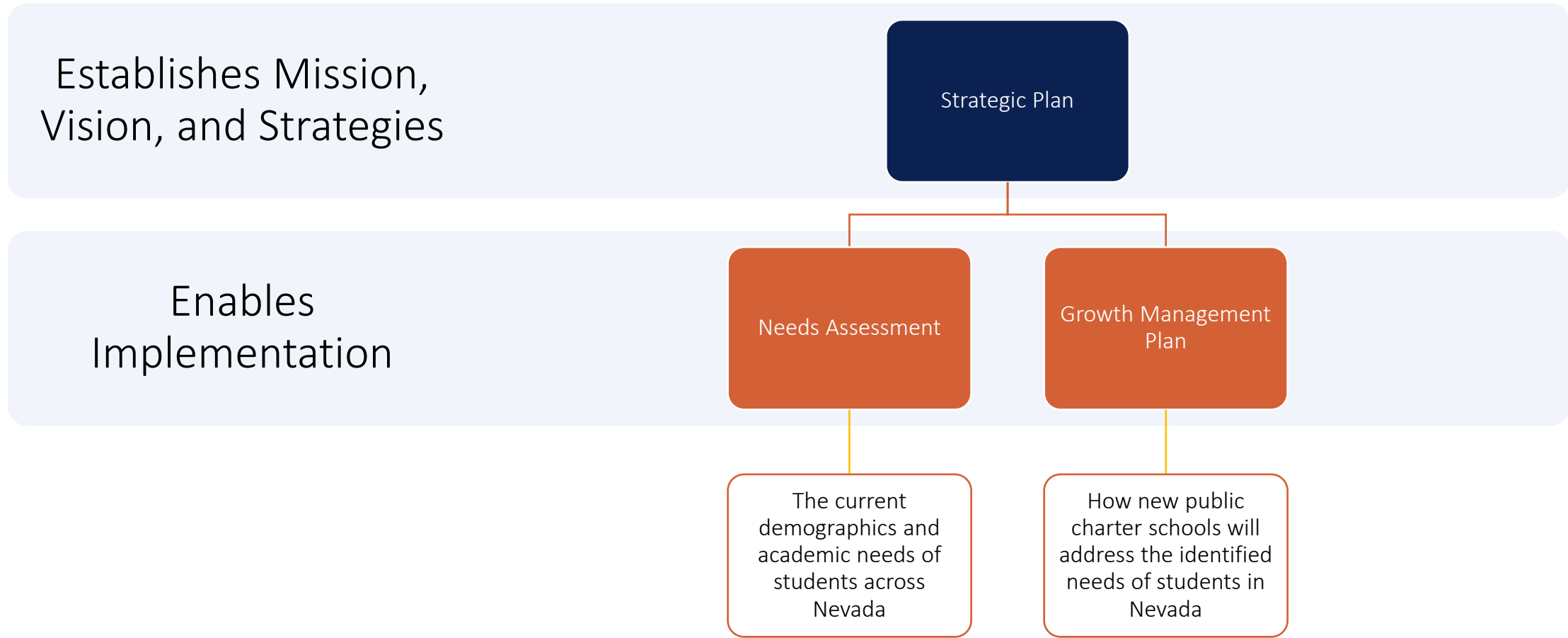
- Background and context
- The current Academic and Demographic Needs Assessment
- Input for the 2022 Needs Assessment

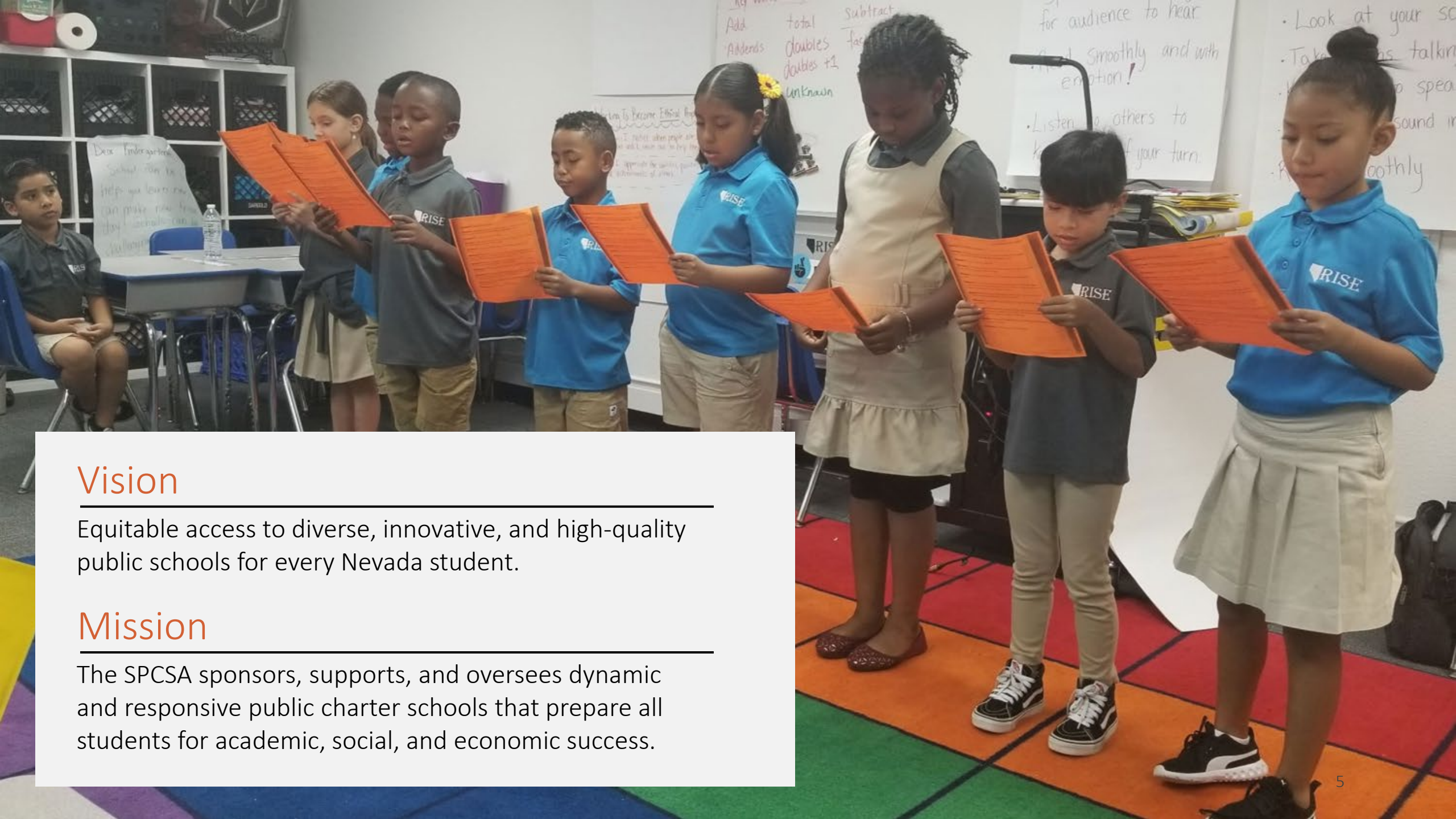
Background and Context





Needs Assessment in Context





Vision

Equitable access to diverse, innovative, and high-quality public schools for every Nevada student.

Mission

The SPCSA sponsors, supports, and oversees dynamic and responsive public charter schools that prepare all students for academic, social, and economic success.



Assembly Bill 462 (2019)

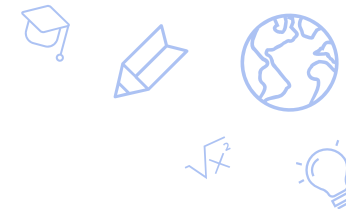
Conduct Annual Needs Assessment (NRS 388A.220)

On or before January 31 of each year, the State Public Charter School Authority shall prepare, in collaboration with the Department and, to the extent practicable, the board of trustees of each school district in this State and any other sponsor of a charter school in this State, an evaluation of demographic information of pupils, the academic needs of pupils and the needs of any pupils who are at risk of dropping out of school in this State.

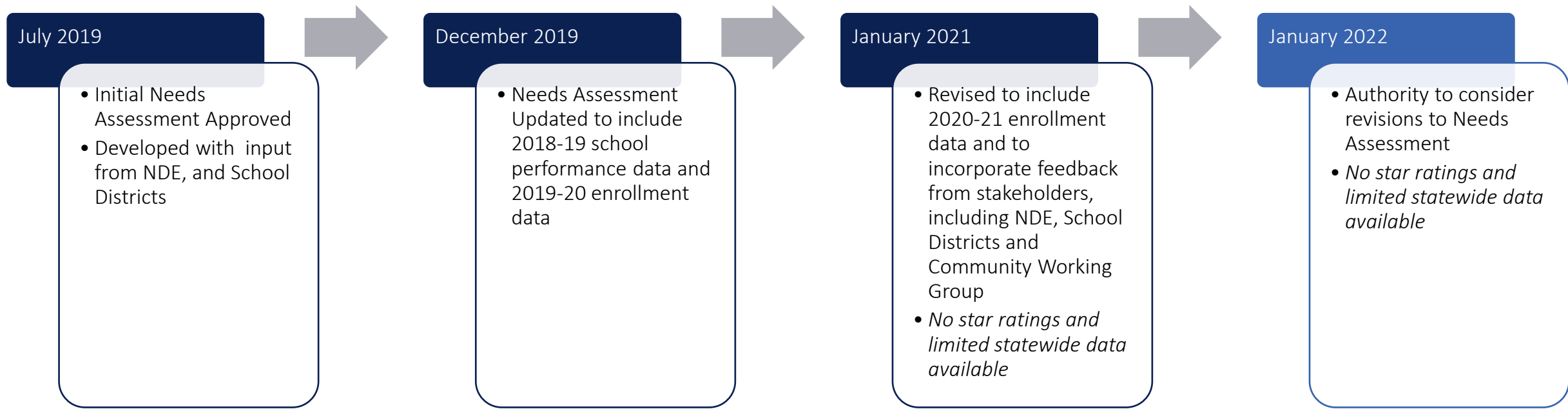
Consider Alignment to Needs Assessment (NRS 388A.249)

The proposed sponsor of a charter school shall, in reviewing an application to form a charter school...

(c) Consider the degree to which the proposed charter school will address the needs identified in the evaluation prepared by the proposed sponsor pursuant to subsection 5 or 6 of NRS 388A.220, as applicable;

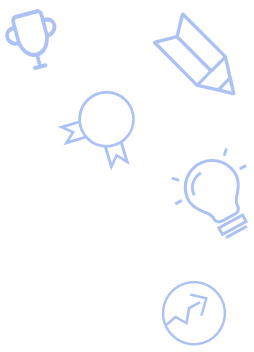


Development of Needs Assessment



Academic and Demographic Needs Assessment





Identified Needs

Demographic Need

Applicants meeting this need will propose a school model that includes demonstrated capacity, credible plans, and thorough research and analysis in order to intentionally serve the following student groups, each of which has been identified as persistently underperforming based on data provided by the NDE: Students qualifying for free or reduced-price lunch (FRL), English Language Learners (ELLs), and Students with Disabilities (those with an Individual Education Program, or IEP). Successful applicants will demonstrate the capacity to support these student groups in achieving academic performance at or above the state average.

Academic Need

Geographies with 1- and 2-Star Schools

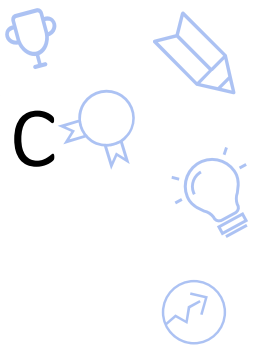
Applicants meeting this need will propose a school model that includes demonstrated capacity, credible plans, and thorough research and analysis to intentionally provide access to 3-, 4- and 5-star schools in zip codes where a significant percentage of students are attending a 1- or 2-star school. A map and list of zip codes is provided within this document; SPCSA charter schools are removed from the data set used to identify zip codes.

Academic Need

Students at Risk of Dropping out of School

Applicants meeting this need will propose a public charter school model that includes demonstrated capacity, credible plans, and thorough research and analysis to prevent at-risk students from dropping out of school. Models may include but are not limited to programs designed for student groups that are most at-risk of dropping out or programs aimed at enabling credit-deficient students to get back on track to graduate. Applicants should demonstrate a strong understanding of grade-level appropriate indicators for successful high school completion, such as early literacy, attendance, and credit sufficiency and plans to enable students to successfully meet these milestones.

Alignment to the Academic and Demographic Needs Assessment



Applicant **does not meet either an academic need or a demographic need.**

Applicant may need to revise their academic plan or pick a new location in order to qualify for a recommendation - even if their application otherwise meets the standards set forth by the SPCSA in its application rubric.

Applicant meets one or more academic needs **OR** one or more demographic needs.

In that instance, an applicant **may be recommended for approval** contingent upon the details of their application and may be subject to additional contract conditions, so long as their application otherwise meets the standard set forth by the SPCSA in its application rubric.

Applicant meets one or more academic needs **AND** one or more demographic needs.

Applicant **will be recommended for approval** so long as their application otherwise meets the standards set forth by the SPCSA in its application rubric.

—————→ **Likelihood applicant is approved**

2022 Needs Assessment





Gathering Input

Community Working Group

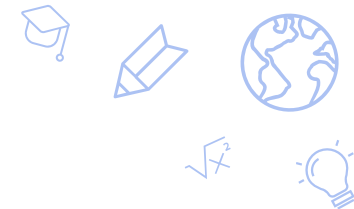
- Gathering initial input on October 7, 2021

School Districts and NDE

- In addition to participation in the CWG:
 - Meeting with School District and NDE Staff
 - Nevada Association of School Superintendents (December 2, 2021)

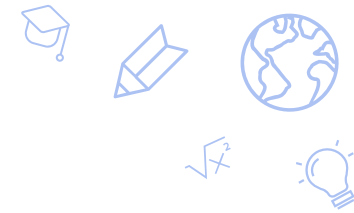
Authority

- December Board Meeting
- Consider approval at January Board Meeting



Community Working Group Input

- Consider incorporating specific information regarding needs of homeless students and students in foster care
- Increase emphasis on proposed schools conducting outreach and recruitment efforts to enroll and serve identified student populations



Discussion

- What questions and thoughts do you have about the Needs Assessment and development process?
- What additional input should staff consider when revising the Needs Assessment?

Thank you!

charterschools.nv.gov

