

# STATE PUBLIC CHARTER SCHOOL AUTHORITY



## 2020 CHARTER SCHOOL REQUEST FOR AMENDMENT TO CHARTER CONTRACT APPLICATION

For Additional Instructions, please see the [Amendment Application Guidance Document](#)

For the: **Las Vegas Collegiate Charter School**

Date Submitted: January 8, 2021

Current Charter Contract Start Date: July 1, 2021

Charter Contract Expiration Date: June 30, 2027

Key Contact: Biante' Gainous

Key Contact title: Executive Director

Key Contact email and phone: 702-762-2254 bgainous@lvccs.org

Date of School Board approval of this application: Tuesday December 15, 2020

### Deadlines

	Spring Cycle	Fall Cycle
Notice <sup>1</sup> of Intent to submit Request for Charter Amendment (RFA)	No Later Than: March 1	No Later Than: September 1
Request For Amendment (RFA)	Due between April 1 – 15	Due between October 1 – 15
Board Meeting for Possible Action (tentative and subject to change)	June board meeting	December board meeting

---

<sup>1</sup> Notice or Letter of Intent

This Request For Amendment (RFA) is submitted to request a contract amendment regarding (place an “X” to the right of the specific RFA type(s) you are applying for):

1. [Add Distance Education](#) \_\_\_\_
2. [Add Dual-Credit Program](#) \_\_\_\_
3. [Change Mission and/or Vision](#) \_\_\_\_
4. [Eliminate a Grade Level or Other Educational Services](#) \_\_\_\_
5. [EMOs: Entering, Amending, Renewing, Terminating Charter Contract with an EMO](#) \_\_\_\_
6. [Enrollment: Expand Enrollment in \*\*Existing\*\* Grade Level\(s\) and Facilities](#) \_\_\_\_
7. [Enrollment: Expand Enrollment in \*\*New\*\* Grade Levels](#) \_\_\_\_
8. [Facilities: Acquire or Construct a New or Additional Facility that will not affect approved enrollment](#) \_\_\_\_
9. [Facilities: Occupy New or Additional Facility](#) \_\_\_\_
10. [Facilities: Occupy a Temporary Facility](#) \_\_\_\_
11. [Facilities: Relocate or Consolidate Campuses](#) \_\_\_\_
12. [RFA: Transportation](#) \_\_\_\_
13. [Other changes](#) \_\_\_\_

## Contents

Section I: Standard RFA Requirements .....	4
A) EXECUTIVE SUMMARY .....	4
B) MEETING THE NEED .....	9
TARGETED PLAN .....	9
GROWTH RATE AND RATIONALE .....	9
PARENT AND COMMUNITY INVOLVEMENT .....	10
C) ACADEMIC PLAN .....	10
MISSION & VISION .....	11
CURRICULUM & INSTRUCTIONAL DESIGN .....	11
SCHOOL STRUCTURE: CALENDAR AND SCHEDULE .....	13
DISTANCE EDUCATION .....	13
PRE-KINDERGARTEN PROGRAMS .....	14
(All Operators Currently Operating or Proposing to Operate Pre-K) .....	14
HIGH SCHOOL GRADUATION REQUIREMENTS AND POSTSECONDARY READINESS .....	14
SPECIAL POPULATIONS .....	15
Special Education .....	15

**Staffing.....16**

**D) FINANCIAL PLAN.....16**

**E) OPERATIONS PLAN .....19**

**LEADERSHIP FOR EXPANSION .....20**

**STAFFING .....21**

**HUMAN CAPITAL STRATEGY .....21**

**SCALE STRATEGY .....22**

**STUDENT RECRUITMENT AND ENROLLMENT .....23**

**BOARD GOVERNANCE .....26**

**INCUBATION YEAR DEVELOPMENT .....27**

**SCHOOL MANAGEMENT CONTRACTS .....28**

**SERVICES .....29**

**ONGOING OPERATIONS .....30**

**Section II: SPECIFIC RFA SECTIONS .....30**

**RFA: Academic Amendments .....30**

**1. RFA: Add Distance Education .....30**

**2. RFA: Add Dual-Credit Program .....32**

**3. RFA: Change Mission and/or Vision .....32**

**4. RFA: Eliminate a grade level or other educational services .....33**

**5. RFA: EMOs/CMOs: Entering, amending, renewing, terminating charter contract with EMO/CMO .....33**

**a) School Management Contracts .....33**

**6. RFA: Enrollment: Expand Enrollment In Existing Grade Level(s) And Facilities .....36**

**7. RFA: Enrollment: Expand Enrollment in New Grade Level(s) .....36**

**Facility RFAs.....37**

**1. RFA: Acquire or construct a facility that will not affect approved enrollment (NAC 388A.320) .....37**

**2. RFA: Occupy New or Additional Sites (NAC 388A.315) .....37**

**3. RFA: Occupy a Temporary Facility .....38**

**4. RFA: Relocate or Consolidate Campuses .....38**

**General Facility RFA requirements.....38**

**Facility RFA Attachments required.....40**

**5. RFA: Transportation .....41**

**6. RFA: Other Changes.....42**

**Section I: Standard RFA Requirements**

**A) EXECUTIVE SUMMARY**

*4 Pages or less per RFA*

**Provide a brief overview of your school, including:**

**1. Identification of the school, its location(s), enrollment(s)(most recent ADE quarter), brief history, brief description of its board members and key leadership team members**

Las Vegas Collegiate Charter School (“Las Vegas Collegiate”) is a kindergarten through fifth grade charter school that will educate 486 scholars at full capacity in the 2024-25 school year. Opening in August of 2020, Las Vegas Collegiate will serve the Historic West Side community (89106), beginning with kindergarten and first grade, growing one grade level until full enrollment.

Las Vegas Collegiate is governed by a Board of Directors (“Board”) that maintains active and effective governance of the school as the school is preparing to open. The Board is a group of high-capacity professionals with diverse backgrounds and skillsets committed to the mission of providing an excellent education for scholars of the Historic Westside. The Las Vegas Collegiate Board fully understands their responsibility for accountability through its oversight of the academic, financial, and organizational health of Las Vegas Collegiate. The current Board consists of the same individuals identified in the original charter application:

<b>Board Members</b>		
<b>Member Name and Position</b>	<b>Experience</b>	<b>Qualifications</b>
David Blodgett Board Member	Founder and Executive Director Nevada Prep Charter School	Mr. Blodgett brings direct experience founding and leading the work of launching a new charter school.
Leland Brandon <b>Board Vice Chair</b>	Vice President American Heart Association - Southern Nevada.	Mr. Brandon brings a wealth of knowledge in community outreach and development. His experience as a successful entrepreneur provides insight into best strategic planning practices; he has lived in Las Vegas for 50+ years.
Brent Erwin <b>Board Treasurer</b>	Senior Vice President of Finance Capriotti’s Sandwich Shop	Mr. Erwin has 10 years of financial experience. Mr. Erwin brings to the table expertise in financial strategy and management. Mr. Erwin has demonstrated a commitment to the success of our communities through various philanthropic ventures.
Maliq Kendricks Board Member	Law Clerk Eighth Judicial District Court	Mr. Kendricks holds a Master’s in Education and a Juris Doctorate and brings a unique perspective to the team as an educator and he brings an understanding of compliance.
Dwight Sanders Board Member	Leadership Coach TNTP	Mr. Sanders has over 10 years of school leadership experience. He brings to the team extensive experience in education with strength in coaching and development.
Jill Schreidl <b>Board Chair</b>	Education Specialist Pearson	Ms. Schreidl holds two educational degrees, Ms. Schreidl brings to the team experience as a classroom educator and extensive experience as a development coach supporting

		growth and development of educators, increasing student academic scores.
Kathleen Simon Board Member	Vice President of Finance Influential Network, Inc.	Ms. Simon brings a wealth of knowledge in the field of finance. She holds a Bachelor's of Science in Accounting with 8 years of experience managing large Fortune 500 accounts.
Lauren Torre <b>Board Secretary</b>	Public Defender District of Nevada US District Court	Ms. Lauren Torre holds a Juris Doctorate and brings to the team a background in legal expertise and demonstrated commitment to community outreach through former work and volunteer experiences.

Bianté Gainous, Lead Founder and Executive Director, is a former Fellow with Building Excellent Schools (“BES”). Early in her professional career, Ms. Gainous served as Executive Administrator to the Chair of the Baltimore City Delegation before joining Teach for America and becoming a certified elementary educator. Her highly effective track record afforded her additional roles and responsibilities such as coaching new teachers and completing a principal residency that allowed her, along with course work, to acquire her Administrator endorsement. In the BES Fellowship Ms. Gainous participated in a rigorous, comprehensive training program focused on urban charter school development and leadership. Ms. Gainous holds a B.A. in Psychology from Hampton University, an M. ED from Johns Hopkins University, and is currently working to complete her doctoral dissertation in Educational Leadership.

## 2. Statement and overview of the mission and vision

**Mission.** Within an academically ambitious, individually supportive, values-based community, Las Vegas Collegiate Charter School prepares kindergarten through fifth grade scholars to thrive in middle and high school, excel in the career of their choice, and lead within our communities.

**Vision.** Regardless of demographics, we believe that all children can achieve at high levels when classroom instruction is strong, school culture is achievement-oriented, supports are targeted through the use of data, and joy and values are infused throughout the school community. We will provide an academically ambitious, college preparatory K-5 charter school that prepares kindergarten through fifth grade scholars to thrive in middle school, high school, college, and life. To deliver on this mission, we offer an extended school day and year, a prioritized focus on literacy and mathematics mastery, an extensive professional development program and assessment system with data-driven action planning, and a values-rich school culture and enrichment program that ensure scholars grow into young leaders with the moral compass to build school and life success.

Las Vegas Collegiate will give families in Las Vegas’ Historic Westside the ability to choose a high-quality, elementary, public school designed to prepare their children for entrance to middle school, the high school of their choice, and access to participation in honors and advanced placement college preparatory high school coursework. Scholars will have a clear picture of what college looks like and will be able to articulate why and how their acceptance and graduation is critical to their life trajectory. They will have the foundational content knowledge, skills, and test scores that position them to build a strong transcript when they reach high school, that will open college doors, along with the character values for lifelong success and positive leadership in the many communities in which they will live, work, and contribute.

Las Vegas Collegiate will open in August with 81 scholars in Kindergarten and 81 scholars in first grade; six years later we will be fully enrolled in all grades K-5, meaning that in 2025, there will be 486 Las Vegas Collegiate scholars receiving a public education that ensures that they are (1) reading on or above grade level by grade three as measured by state and national assessments, (2) responding to rigorous grade level text as measured by those same assessments, and (3) have the literacy foundations of fluency, comprehension, and expression and the numeracy foundations of conceptual understanding and accuracy of application to understand, analyze, and compute, putting them on the path to college.

At the center of our vision are four guiding beliefs: (1) High-quality curriculum, paired with high-quality teaching, drives academic achievement. (2) Data consistently informs classroom instruction and individualized supports. (3) A warm, demanding, valued-based culture of excellence promotes school and life success. (4) Schoolwide leadership development promotes student growth and community enrichment.

## 3. Specific statement of the request

(Example:) “The Board of the above-named charter school, operating under a current contract with a start date of July 1, 2021 and a six-year expiration date of June 30, 2027 requests that the SPCSA approve this request to amend its charter school contract with the SPCSA regarding the following (check all that apply):

- 1. Dual-Credit Programs
- 2. EMOs: Amend charter contract with an EMO
- 3. Enrollment: Expand enrollment in existing grades and facilities
- 4. Enrollment: Expand enrollment in new grade levels
- 5. Enrollment: Eliminate a grade level or other educational services
- 6. Facilities: Acquire or construct a new or additional facility that will not affect approved enrollment
- 7. Facilities: Occupy additional sites
- 8. Facilities: Relocate or consolidate campuses
- 9. Facilities: Occupy a temporary facility
- 10. Other (specify): \_\_\_\_\_

(See full list above of RFA amendment types)

Attach a copy of the document(s), including minutes, confirming approval of the RFA.

**4. A summary explanation of the reasons that the charter school is seeking to the charter school is seeking to make this specific requested change.**

The impact of COVID-19 resulted in Las Vegas Collegiate making the tough decision to delay opening by one year. The extended timeline allowed us additional time to locate a facility to support year 1 operations. To ensure effectiveness, Las Vegas Collegiate has partnered with an experienced facility developer to support our efforts. To date, the facility developer has done extensive work in the community to find a facility that can support housing a school. At present, Las Vegas Collegiate has exhausted all possible facility options within the 89106 zip code and are seeking approval to expand our facility search to with 1 mile of 89106.

Las Vegas Collegiate remains committed to our identified community. Given our commitment, we have secured funding through the Charter School Start-Up Grant to pay for a bus that will support transportation. The bus can, and is expected to, transport 70% of Las Vegas Collegiate scholars. Additionally, we remain a close partner of the Agassi Boys and Girls Club and are developing a plan that includes transportation, ensuring we get students to and from school safely and on time each and every day.

Additionally, we are requesting an amendment to our enrollment numbers. On April 10, 2020, Las Vegas Collegiate requested and was approved an amendment to decrease our enrollment. We are seeking approval to increase our enrollment back to the original 162 scholars. We intend to have 3 kindergarten classrooms and 3 first grade classrooms. The Las Vegas Collegiate team originally requested the decrease in enrollment in order to occupy a facility that did not offer 6 classrooms without construction. As we have more time and are seeking a different facility, we intend to choose a facility option that can support the originally requested and approved enrollment count. Because we are requesting the amendment to enrollment, we are subsequently requesting an amendment to the number of staff we will hire. We are seeking to increase the number of educators by one, to support the additional classroom. This increase does not impact the model of the school as it was written originally. Scholars and families will receive all components of the originally proposed program.

**5. Description of proposed target model and target communities**

Las Vegas Collegiate is not proposing a new target model or community. The educational model and intended community remain the same as described in the original application.

**6. Statement of outcomes you expect to achieve across the network of campuses**

Las Vegas Collegiate is not seeking a network of campuses. The school will still serve the same population, relocating within 1 mile of the originally proposed zip code, with free bus access for families.

**7. Key components of your educational model for the expanded school**

The educational model of Las Vegas Collegiate remains the same as described in the original charter application and is not seeking expansion at this time.

**Model.** To provide an excellent K-5 educational option to families and scholars residing in 89106 who do not currently have access to one, we will strategically target economically disadvantaged, majority African American and Hispanic scholars residing in the Historic Westside community. The goal of Las Vegas Collegiate is not to simply outperform neighboring schools and those with similar demographics. Rather, it is to prepare scholars from 89106 to be able to demonstrate some of the strongest academic outcomes in our state and to position our scholars

to ultimately compete with peers here in Nevada and from across the country. By closing the achievement gap in our community and across all subgroups, we will simultaneously close the economic and opportunity gap faced by so many of our families. Driven by our ambitious mission and priorities aligned to the State of Nevada’s and Clark County’s academic priorities, specifically Nevada’s Read by Grade 3 priority, we know that mission success requires a strong academic foundation that prioritizes literacy. The proposed school model is directly informed by several high performing schools across the country.

Core Components of the Las Vegas Collegiate Charter School Model	
Prioritized Focus on Literacy	With 180 daily minutes of literacy instruction, we engage scholars across multiple modalities.: Guided Reading, Phonics, Writing, Read Aloud, Daily Intervention, and Blended Learning.
Daily Small Group Learning	With 9:1 scholar to teacher ratio in Guided Reading, Phonics, and Math, teachers target scholars on the same instructional level and provide immediate feedback for remediation/ acceleration.
Daily Individualized Interventions	With 45 minutes of individualized learning and Blended Learning in classroom-based computer stations, we focus on skill-based needs to close gaps and accelerate learning.
Expanded Focus on Mathematics	With 105 minutes of daily Math instruction, we develop critical thinking/conceptual understanding and accuracy of application. Taught in small groups, lessons include Math Stories, Automaticity (timed math drills), Independent Practice, Intervention, and Blended Learning.
Science Instruction	With 45 minutes of daily Science instruction, curriculum is aligned to the Nevada Academic Content Standards for Science and provides hands-on exploration in complex science topics.
Social Studies Instruction	With 45 minutes of daily Social Studies instruction in grades 3-5 and taught in a Blended Model in K-2 as part of our literacy program focused on non-fiction reading, our Social Studies curriculum is modeled after the high-achieving, Achievement First network of charter schools.
Schoolwide Focus on Immediate Action Planning Assessments Data	With 30 days of professional development including 5 days of data analysis and action planning and 3 weekly hours of teacher training including analysis of scholar work, we focus on where students are throughout the year and what we need to do to reach our goals.
Frequent, Systematic, and Mission-Focused Family Communication	With 23 annual family events aligned to our mission and academic goals, and ongoing, systematic touch points between school and home on academics and behavior, we work proactively with families to ensure reading readiness by grade three and a measurable foundation for college readiness before leaving elementary school.

**8. Describe the charter school’s plan to ensure that proper restorative justice principles are practiced.**

**Describe plans, including record keeping, to monitor for potential disproportionate discipline practices.**

We believe that to support a safe, structured, and joyful school culture, it is vital to incorporate key restorative practices to best support our scholars. Restorative practices focus on making positive connections between staff and scholars, which create a more positive learning environment and allows for more productive outcomes when teachers address scholar misbehaviors. While it is natural for scholars not to want to be addressed for behavior, if a consequence is given, restorative practices allow for the relationship between the teacher and scholar to be quickly repaired. When implemented effectively, restorative practices create a positive school culture where scholars feel supported.

Las Vegas Collegiate establish practices such as these to ensure effective principles live in the fabric of our school:

- Teacher interventions when addressing scholar behavior
- An in-class reflection space for restorative conversations between teachers and scholars to be used after scholars have completed their in-class reflection
- Restorative conversations between the School Leadership (Dean of School Culture beginning in year 3) and a scholar to be used if a scholar has been removed from class

All staff will be trained on these approaches in summer professional development. Throughout the school year, staff will be observed for how effectively they are implementing these strategies and we will use weekly professional development as needed to address ways to be more effective. While staff will be trained in the summer on these practices, we will also spend time in our hiring process to identify if a candidate is aligned to restorative practices and will have candidates practice role play scenarios related to addressing scholar management situations to see if they are receptive to and capable of implementing these practices.

We will implement a system that supports every scholar and maintains a safe, orderly learning environment. It will include restorative practices and common-sense consequences that allow scholars to reflect on their behaviors and make productive choices to get back to learning. Our teachers will be trained to identify off-task behaviors immediately and implement least invasive forms of intervention to quickly get scholars back on track without a consequence. If a scholar is continuing to struggle in class, they will be asked to sit at a reflection desk in the classroom where they will have a

few minutes to calm down and reflect. The teacher will have a restorative conversation with the scholar to ensure that they are ready to rejoin the class and be productive. These strategies allow for most of our student management to occur within the classroom and will not unnecessarily lead to missed instructional time. If a scholar has to be removed from class, they will reflect on their behavior with a member of leadership before having a restorative conversation. The member of the leadership team will escort the scholar back to class, oversee a quick restorative conversation with the teacher who is excited to welcome the scholar back, and then the scholar will rejoin. The combination of calm, positive teacher tone and logical consequence system ensures that behaviors are addressed, scholars are able to get back to learning quickly, and minor issues aren't escalated into major consequences.

Las Vegas Collegiate takes equality, in every sense, very seriously. Each scholar will be addressed as an individual, subject to consequences be they positive or negative, equally. As a culturally responsive campus, all staff will participate in equity and inclusion training and ongoing professional development as needed throughout the year to mitigate implicit bias and raise conscious awareness of biases we may have. We will disaggregate data based upon racial, ethnic, gender, and other subgroups (special education, ELL status) to ensure we are tracking the trends and impact of our discipline practices. As we become aware of trends or implicit bias, we will address the issue directly, ensuring students are treated equally and fairly.

**9. Describe the charter school's plan to ensure enrollment diversity and equity, commensurate with the neighborhood and zip codes it serves. Include plans to close any proficiency gaps among diverse student groups (ex. race/ethnicity, FRL, EL, IEP) as well as family and community engagement strategies.**

Las Vegas Collegiate currently engages in comprehensive recruitment efforts. Our goal is to ensure that our scholar demographics match that of the community we serve. As such, we anticipate a 12% special education population, 26% ELL scholars, and 94% economically disadvantaged families. Schools all across the state of Nevada typically have a higher population of white children. Las Vegas Collegiate will diversify our population serving at minimum 50 percent children of color. To achieve this, we engage many diverse families. Each year, we will share publicly the opportunity for families to enroll. We currently, and will continue to, publicize our school through social media accounts, radio stations, and printed materials. We set-up tables at local organizations and events. We will leverage our partnership with local community organizations such as the Boys and Girls Club to share information with families and host enrollment events. We connect with local head starts to increase parent awareness and share with them the opportunity to enroll their child. Similarly, we leverage social media to engage with parent groups such as those that advocate for students with disabilities or English Language Learners. We are committed to supporting the needs of all scholars and recognize that the work begins with ensuring that parents know that Las Vegas Collegiate is an option for their child.

**10. The values, approach, and leadership accomplishments of your school or network leader and leadership team**

Las Vegas Collegiate's values, approach, and leadership remains the same as described in the original application. We are driven by our **PRIDE** values - **Partnership, Resourcefulness, Integrity, Determination, and Enthusiasm**. We offer an extended day, literacy-prioritized, data-driven school that will establish the foundation of reading and college readiness for scholars in grades K-5. The Founding Board and Executive Director bring a broad set of professional skills and expertise, including charter school start-up in Nevada and respected instructional leadership in urban education, as well as the national support of BES and the local support of multiple organizations, including the financial commitment of Opportunity 180.

**11. Key supporters, partners, or resources that will contribute to your expanded school's success.**

Supporters, partners, and resources that will contribute to Las Vegas Collegiate's success remain the same as described in the original application. The Founding Team is grateful for the strong support of local families, business owners, non-profits, and other educational organizations here in Las Vegas. We bring the local partnership of the Boys and Girls Club of Southern Nevada which has fully supported our community outreach over the last year through hosting multiple events for us and will continue to support enrollment through additional events. We bring the support of Teach For America, Democracy Prep Charter School, the Achievement Network, Opportunity 180, and several well-respected school leaders. We bring the partnership of EdTEC which has worked closely with us in the development of our fiscal plans and which we are utilizing as the school's back-office provider. We are supported by the national non-profit BES which has trained Ms. Gainous and will support the success of the Founding Team, Founding, Leader, and school throughout the first three years of start-up. Finally, the community itself remains and will continue to be a significant partner.



## *NOTE*

1. **For all remaining General Requirements Sections:** Complete and submit all RFAs by answering remaining General Requirements Section questions.
2. **Indicate “No change” for any below requested response that has not changed from your charter school contract.**
3. **Indicate “N/A” for any below requested response in this General Requirements Section that is not applicable to your request. Applicants do not need to respond “N/A” to any Specific Requirements RFA section for which they are not applying.**
4. *If your school is seeking an amendment outside of the Fall or Spring Amendment Cycle, please include at the front of the application:*
  - a. *Letter from the Board chair requesting Good Cause Exemption;*
  - b. *Agenda for the Board Meeting where Board voted to request the Good Cause Exemption; and*
  - c. *The draft or approved minutes for the Board Meeting where the Board voted to request the Good Cause Exemption.*
5. **To expand a section and complete, please click the triangle next to the header.**

## **B) MEETING THE NEED**

### **TARGETED PLAN**

- (1) Identify the community you wish to serve as a result of the expansion or RFA and describe your interest in serving this specific community.

**NO CHANGE:** Las Vegas Collegiate is dedicated to serving the 89106-community due to its lack of access to a high-quality elementary school and the community’s desire for such a school and will continue to do so given the location adjustment. We are working diligently to secure busing to ensure transportation is not a barrier for the parent and families who have expressed interest in Las Vegas Collegiate to date.

- (2) Explain how your expansion model or RFA, and the commitment to serve this population, including the grade levels you have chosen, would meet the district and community needs and align with the mission of the SPCSA.

**NO CHANGE** from original application

### **GROWTH RATE AND RATIONALE**

- (1) Describe the school’s six-year growth plan for developing new schools in Nevada and other states. Please describe the proposed scope of growth over the next 6 years, including both the schools that the campuses the school has already been approved to open, those it is currently applying to open and any additional campuses that it anticipates applying to open in the next six years (number of campuses, locations, proposed six-year enrollment projections, and grade configuration/type of schools).
  - a. Provide a rationale for the proposed six-year growth plan; for example, how the school determined the appropriate pace and scope of the proposed growth and why the school is well-positioned to implement the growth plan. If locating in a new community within your present county of location or a new county within Nevada, please explain the rationale for the geographic expansion. If planning to operate new campuses in other states, please explain the rationale for that expansion.

**NO CHANGE** from original application

- (2) Specifically identify the key risks associated with this growth plan and describe the steps the school is taking to mitigate these risks. Respondents should demonstrate a sophisticated and nuanced understanding of the challenges of replication in general and as they relate specifically to their school growth plans based on current and historic experience of charter school management organizations and similar types of multi-site social enterprises and non-profit and for-profit organizations. The response should detail specific risks and explain how the school will minimize the impact of each of these risks, and ideally provide contingency plans for them.

Examples may include:

- a. Inability to secure facilities/facilities financing;
- b. Difficulty raising philanthropic funding;
- c. Insufficient talent pipeline/difficulty recruiting faculty;
- d. Insufficient leadership pipeline/difficulty recruiting school leaders;
- e. Misalignment between the founding school and leader and new campuses and leaders, and;
- f. Ambiguous student performance outcomes and the need to curtail expansion if performance drops.

**NO CHANGE** from original application

- (3) Discuss lessons learned during the school’s past replication efforts and those of any replicated school or organization from another jurisdiction. For example: specifically identify each challenge encountered and how the school addressed them, as well as how the school would minimize such challenges for the proposed campuses.

**NO CHANGE** from original application

## **PARENT AND COMMUNITY INVOLVEMENT**

- (1) Describe the role to date of any parents, neighborhood, and/or community members involved in the proposed expansion of the school.

**NOT APPLICABLE (N/A)**

- (2) Describe how you will engage parents, neighborhood, and community members from the time that the application is approved through the opening of the new campus(es) or grade levels. What specific strategies will be implemented to establish buy-in and to learn parent priorities and concerns during the transition process and post opening?

**NO CHANGE** from original application

- (3) Describe how you will engage parents in the life of the expanded school (in addition to any proposed governance roles). Explain the plan for building family-school partnerships that strengthen support for learning and encourage parental involvement. Describe any commitments or volunteer activities the school will seek from, offer to, or require of parents.

**NO CHANGE** from original application

- (4) Discuss the community resources that will be available to students and parents at the expanded school. Describe any new strategic partnerships the expanded school will have with community organizations, businesses, or other educational institutions that are part of the school’s core mission, vision, and program other than dual-credit partners discussed in subsequent sections. Specify the nature, purposes, terms, and scope of services of any such partnerships, including any fee-based or in-kind commitments from community organizations or individuals that will enrich student-learning opportunities. Include, as an **Attachment** \_\_,

existing evidence of support from new community partners such as letters of intent/commitment, memoranda of understanding, and/or contracts.

**NOT APPLICABLE (N/A)**

- (5) Describe the school’s ties to and/or knowledge of the target community. How has the school learned from and engaged with this community to date? What initiatives and/or strategies will you implement to learn from and engage the neighborhood, community, and broader city/county?

**NO CHANGE** from original application

- (6) Identify any organizations, agencies, or consultants that are partners in planning and expanding the school, along with a brief description of their current and planned role and any resources they have contributed or plan to contribute to the school’s development. If the school is new to this county, describe how your previous work has prepared you to establish relationships and supports in this new community.

**NOT APPLICABLE (N/A)**

## **C) ACADEMIC PLAN**

### **MISSION & VISION**

The mission of your school should describe the purpose of your school, including the students and community to be served and the values to which you will adhere while achieving that purpose. The vision of your school should describe what success looks like for students, for the school as a whole, and for any other entities that are critical to your mission. The mission and vision statement should align with the purposes of the Nevada charter school law and the mission of the State Public Charter School Authority and serves as the foundation for the entire proposal.

Explain whether the proposed mission and vision for the school/network is different from the existing school’s mission and vision and how they differ. Describe the reasoning behind any modifications.

Explain whether the mission and vision outlined will replace the current mission and vision of the charter holder, or if the school proposes to complement a broader organizational mission and vision with campus or grade-level specific variants. How will the entity as a whole ensure consistency and coherence of its mission and vision?

**NO CHANGE** from original application

### **CURRICULUM & INSTRUCTIONAL DESIGN**

The framework proposed for instructional design must both reflect the needs of the anticipated population and ensure all students will meet or exceed the expectations of the Nevada Academic Content Standards.

- (1) Historical Performance

- (a) **Performance Data:** schools are only eligible to complete the amendment request and business plan if the existing schools meet the Authority’s eligibility criteria; these criteria reflect a proven academic track record of success with Nevada students and our operating expectations or similar performance in another state.
  - (i) A school is welcome to provide any additional historical academic performance metrics that fall outside of the operator’s contractual performance plan (e.g. average student growth on an adaptive test such as ACT Aspire, NWEA MAP, SCANTRON, Renaissance Learning’s STAR, etc.). If provided, describe student performance on these metrics.
  - (ii) *Please only provide data in vendor-produced score reports and note that the Authority may require additional time and resources to review and vet such data.*
- (b) **Interventions:** Please explain any past performance that has not met the organization’s expectations. How was the underperformance diagnosed, how were appropriate intervention(s) determined, and how are they being implemented? What are the key areas in which existing schools/campuses need to improve, and what are the priorities to drive further success?

**NOT APPLICABLE (N/A)**

(2) Academic Vision and Theory of Change

- (a) **Model Non-Negotiables:** What are the key non-negotiables (i.e. the key school design components, policies, practices, etc. that underlie school culture and academic outcomes) of your school model? Please include details about the critical elements that are constant across the organization's schools and those that may vary. Discuss any campus-level autonomies in implementing the educational plan.

**NO CHANGE** from original application

(3) Performance Management

- a) **Measuring Progress:** Describe the school’s approach to performance management across the network and with individual campuses, including the systems used to measure and evaluate both academic and non-academic performance of each site and of the network as a whole.
  - a. What performance management systems, processes, and benchmarks will the school use to formally assess this progress?
  - b. Explain how the school addresses underperformance and describe the corrective action plan procedures.
- b) **Closure:** Describe the conditions that would cause the school to petition the Authority close a consistently low performing campus. Be specific about threshold metrics the school would use to inform its decision.
- c) **College Readiness (HS Only):** Describe the mechanisms that the school employs to accurately, reliably, and consistently track college acceptance, enrollment, and persistence rates. If historical data is available on college acceptance, enrollment, and/or persistence rates, please include it. Cite the percent of total alumni for which the school has data on each metric. If data is not available, please include plans to create mechanisms to accurately, reliably, and consistently track student acceptance, enrollment, and persistence rates.
- d) **Readiness to Replicate:** What academic, financial, and operational metrics does the school and its Board use to determine readiness for replication?
- e) **Compliance:** Describe the proposed academic program and how it complies with the requirements of NRS 388A.366(1)(f) and NRS 389.018. Please complete the scope and sequence/standards alignment template (Excel document at [http://CharterSchools.nv.gov/uploadedFiles/CharterSchoolsnv.gov/content/Grocers/Alignment\\_Template.xlsx](http://CharterSchools.nv.gov/uploadedFiles/CharterSchoolsnv.gov/content/Grocers/Alignment_Template.xlsx)) for each class scheduled to be provided by the school for each grade level to be served following this proposed expansion. For example, a school that currently serves students in K, 1, and 2 which seeks to add grades 3 and 4 would provide the scope and sequence/standards alignment for each class/subject area in the grades currently served along with the scope and sequence/alignment for each of the proposed new grades.
- f) **Instructional Strategies:** Describe the instructional strategies that you will implement to support the education plan and why they are well suited for the anticipated student population—including a detailed

discussion of these strategies for both the expanded grades and for all existing grades. For each grade level to be served by the charter school following the expansion, identify and describe in detail the data, methods, and systems teachers will use to provide differentiated instruction to students. Please note that SPCSA schools typically start with students performing across a broad spectrum from years below grade level to advanced learners. Include the professional development teachers will receive to ensure high levels of implementation.

- g) **Remediating Academic Underperformance:** Describe the school's approach to help remediate students' academic underperformance both for both the expanded grades and for all existing grades. Detail the identification strategy, interventions, and remediation to be implemented. Cite the research/rationale for the chosen methods. How will you measure the success of your academic remediation efforts (in year 1 of the expansion, year 3, year 5, and beyond)? How will you communicate the need for remediation to parents? How will staffing be structured to ensure that gifted students are adequately supported?
- h) **Identifying Needs:** Describe how you will identify the needs of all students in both the expanded grades and for all existing grades. Identify the research-based programs, strategies and supports you will utilize to provide a broad continuum of services, ensure students' access to the general education curriculum in the least restrictive environment, and fulfill NV's required Response to Intervention model.
- i) **Intellectually Gifted Students:** Explain how the school will identify and differentiate to meet the needs of intellectually gifted students in both the expanded grades and for all existing grades in a way that extends their learning and offers them unique, tailored opportunities. Please note that Nevada law classifies intellectually gifted students as eligible for specific support services. How will staffing be structured to ensure that gifted students are adequately supported?
- j) **Enrichment Opportunities:** Describe the enrichment opportunities that will be available to students performing at or above grade level in both the expanded grades and for all existing grades as part of the school's comprehensive strategy to ensure that all pupils are making accelerated academic progress.
- k) **Matriculation:** Explain how students will matriculate through the school (i.e., promotion/retention policies) and how stakeholders will be informed of these standards.

**NO CHANGE** from original application

## **SCHOOL STRUCTURE: CALENDAR AND SCHEDULE**

- a) Discuss the annual academic schedule for the school, including the calendar for the proposed new grades. Explain how the calendar reflects the needs of the student population and the educational model.
- b) Describe the structure of the school day and week for both the proposed new grades and for existing grades. Include the number of instructional minutes/hours in a day for core subjects such as language arts, mathematics, science, and social studies. Note the length of the school day, including start and dismissal times. Explain why the school's daily and weekly schedule will be optimal for the school model and for student learning. Provide the minimum number of hours/minutes per day and week that the school will devote to academic instruction in each grade.
- c) Describe your goal for student attendance and explain how you will ensure high rates of student attendance. Who will be responsible for collecting and monitoring attendance data? What supports will be in place to reduce truancy and chronic absenteeism?

**NO CHANGE** from original application

## **DISTANCE EDUCATION**

(Distance Education Expansion Amendments)

A charter school that wishes to provide distance education (online, virtual, cyber, etc.) courses and/or programs (NRS 388.820-388.874 and NAC 388.800-388.860) must submit a distance education application to the Nevada Department of Education prior to or in conjunction with its amendment request to the SPCSA.

For applicants who do not propose to offer a program of distance education or who already have approval to operate such a program, please provide a brief statement explaining that the questions in this section are not applicable.

- (1) Describe the system of course credits that the school will use.
- (2) Describe how the school will monitor and verify the participation in and completion of courses by pupils.
- (3) Describe how the school will ensure students participate in assessments and submit coursework.
- (4) Describe how the school will conduct parent-teacher conferences.
- (5) Describe how the school will administer all tests, examinations or assessments required by state or federal law or integral to the performance goals of the charter school in a proctored setting.

**NOT APPLICABLE (N/A)**

## **PRE-KINDERGARTEN PROGRAMS**

(All Operators Currently Operating or Proposing to Operate Pre-K)

A charter school that wishes to provide pre-kindergarten services to students who will later enroll in its K-12 programs must apply separately to the Nevada Department of Education to offer education below the kindergarten level following charter approval. Approval to offer pre-kindergarten cannot be guaranteed. Consequently, revenues and expenditures related to pre-kindergarten should not be included in the initial charter application budget. Please note that state-funded pre-kindergarten programs are not directed through the state Distributive Schools Account for K-12 education. In addition to a limited amount of state pre-kindergarten funding available through the Department of Education, the SPCSA is also a sub-recipient of a federal grant to expand early childhood services in certain high-need communities through programs approved by NDE. Applicants are encouraged to review resources available at [http://www.doe.nv.gov/Early\\_Learning\\_Development/](http://www.doe.nv.gov/Early_Learning_Development/). For applicants who do not propose to offer pre-kindergarten, please provide a brief statement explaining that the questions in this section are not applicable.

- (1) Identify whether the school plans to offer pre-kindergarten in the first year of operation at the new campus or in any subsequent year of the charter term.
- (2) Identify whether the school will offer fee-based pre-kindergarten services. If the school does plan to offer fee-based pre-kindergarten, explain how the school will ensure that parents will be informed both initially and on an ongoing basis that both state and federal law preclude a K-12 charter school from giving admissions preference to students to whom it has previously charged tuition.
- (3) Describe the school's plans for ensuring that the pre-kindergarten program aligns with the mission, vision, and program of the school's other grades and meets all other state requirements.
- (4) Explain how the school's proposed pre-kindergarten program may meet the federal pre-kindergarten expansion grant criteria.

**NOT APPLICABLE (N/A)**

## **HIGH SCHOOL GRADUATION REQUIREMENTS AND POSTSECONDARY READINESS**

*(New High School Amendments Only)*

High schools approved by the SPCSA will be expected to meet or exceed Nevada graduation requirements. For operators who do not propose to operate a high school program during the initial charter term or who already have approval to operate a high school, please provide a brief statement explaining that the questions in this section are not applicable.

- (1) Explain how the school will meet state requirements. Describe how students will earn credit hours, how grade-point averages will be calculated, what information will be on transcripts, and what elective courses will be offered. If graduation requirements for the school will exceed those required by the State of Nevada, explain the additional requirements.
- (2) Explain how the graduation requirements will ensure student readiness for college or other postsecondary opportunities (e.g., trade school, military service, or entering the workforce).

- (3) Explain what systems and structures the school will implement for students at risk for dropping out and/or not meeting the proposed graduation requirements, including plans to address students who are overage for grade, those needing to access credit recovery options, and those performing significantly below grade level.

**NOT APPLICABLE (N/A)**

## **SPECIAL POPULATIONS**

Pursuant to State and federal law, SPCSA schools are required to serve the needs of all students in special populations. Beginning in the 2017-18 school year, the State of Nevada will switch to a weighted formula for special education. For the first time, this will provide for equitable special education funding across all Nevada public schools. Over time, this will necessitate current SPCSA-sponsored charter schools moving from a defined continuum of service to a broader continuum of services. All operators submitting amendment requests to the SPCSA after the conclusion of the 2015 Legislative Session should plan on offering students a broad continuum of services.

The SPCSA operates under the following principles with regards to special populations of students:

SPCSA schools serve all eligible students. SPCSA schools do not deny the enrollment of any student based on needs or disability.

1. SPCSA schools are to ensure streamlined access for all students requiring special programs.
2. SPCSA schools develop programs to support the needs of their students.
3. SPCSA schools do not counsel or kick any students out.
4. SPCSA schools utilize best practices to expose students to the most inclusive environments appropriate.
5. If needed, an SPCSA school is responsible for developing more restrictive placements to meet the needs of the highest needs students, including but not limited to clustered placements in consortium with other charter schools.
6. SPCSA schools are responsible for providing high functioning, trained special education teams, which focus on student advocacy and high expectations. IEP teams (including school's leadership) make placement decisions at IEP meetings. Decisions are made based on evidence/data to support what is best for the student.

**NO CHANGE** from original application

## **Special Education**

- (1) Track Record: Please explain the extent to which the board and leadership team (instructional leader, etc.) has experience working to achieve high academic outcomes of students with disabilities, including students with mild, moderate, and severe disabilities.
- (2) Identification: Describe in detail the school's Child Find process. How will the school identify students in need of additional supports or services?
  - a) (*Elementary Schools Only*) How will the school accurately identify students prior to and following enrollment (e.g., those who require pre-school special education and related services) and in the early grades (PreK, K, 1, or 2) for appropriate services?
  - b) (*Middle and High Schools*) How will the school identify and serve students who require special education services and develop transition plans?
- (3) (*All Schools*) How will the school handle over-identification of students as having a disability that qualifies them for special education services? What will be the process to transition a student out of special education who has been incorrectly identified as having a disability in the past?
  - a) Continuum of Services: How will the school provide a broad continuum of instructional options and behavioral supports and interventions for students with a range of disabilities? Specifically describe how students with severe intellectual, learning, and/or emotional disabilities will be served. Provide a chart which graphically illustrates the continuum of services which identifies, by disability and level of severity, the means by which students with disabilities will be able to receive an appropriate public education in the least

restrictive environment (note—this graphic may be created using a commercial program like Microsoft Visio or a free or low-cost internet-based solution such as Lucidchart). Identify the resources, personnel (including administrative responsibilities), and direct and related services the school is likely to provide both within general education classrooms and in other settings (e.g., collaborative team teaching (CTT), Special Education Teacher Support Services (SETSS), speech therapy, physical therapy, occupational therapy, counseling, etc.) as well as the services or settings that will be provided through a consortium or other collaborative initiative with other charter schools or through a third party contract.

- (4) Enrollment: Describe the school’s strategy and plan to recruit, enroll, and retain students with disabilities. How will the school proactively address parent and community perceptions around the availability and appropriateness of the charter school to the needs of students with disabilities?
- (5) General Education Collaboration/Access: How will special education and related service personnel collaborate with general education teachers (e.g., team teaching, team planning, etc.) to ensure that all students are able to access a rigorous general academic curriculum?

**NO CHANGE** from original application

## **Staffing**

How will you ensure qualified staffing to meet the needs of students with disabilities across a broad continuum? Note: Federal and Nevada law requires licensure for the special education teachers, related service personnel, and psychologists at all charter schools, including those which are permitted to waive other licensure requirements due to their academic track record.

- (1) Staff Development: How does the school plan to train general education teachers to modify the curriculum and instruction to address the unique needs of students with disabilities across a broad continuum?
- (2) Discipline: Explain how the school will protect the rights of students with disabilities in disciplinary actions and proceedings and exhaust all options in order to promote the continuation of educational services in the home school.
- (3) Monitoring: What are your plans for monitoring and evaluating both the progress and success of students who qualify for special education and related services across a broad continuum, and the extent to which your special education program complies with relevant federal and state laws? How will curriculum and instructional decisions be tracked and monitored by IEP teams and school personnel?
- (4) Parental Involvement: What appropriate programs, activities, and procedures will be implemented for the participation of parents of students with a broad range of disabilities?
- (5) For Distance Education Schools: Describe how the school will provide appropriate services in the distance education learning environment to students with disabilities across a broad continuum. *If you are not proposing to operate a distance education or virtual school, please explain that this is not applicable.*

**NO CHANGE** from original application

## **D) FINANCIAL PLAN**

**This section must be completed for all applications.**

- (1) Describe the systems and processes by which the school will manage accounting, purchasing, payroll, and audits. Specify any administrative services expected to be contracted for the school and describe the criteria and procedures for the selection of contractors and the mechanism by which the board will monitor and hold the contractor responsible for providing such services.

Our proposed amendment has required us to update the budget to ensure all aligned costs for the facility as well as the cost of bus transportation for our families in the target zip code, ensuring full access to the community identified within the application and from which all current applications for enrollment in our inaugural year.

Las Vegas Collegiate has developed and maintains financial policies and procedures that ensure sound internal controls, fiscal responsibility, and accountability in accordance with Generally Accepted Accounting Principles (GAAP). We



follow all relevant laws and regulations that govern Charter Schools in Nevada. **Accounting.** Las Vegas Collegiate has established an accounting system comprised of the methods and records used to identify, assemble, classify, record, and report accounting transactions. The methods are set up to: (1) identify and record all of the organization’s transactions, (2) verify that recorded transactions actually took place, (3) describe the transactions in enough detail to allow classification for financial reporting, (4) ensure transactions are recorded at the appropriate amounts, (5) indicate the time period in which transactions occurred in order to record them in the proper accounting period, and (6) ensure that transactions were properly authorized. **Purchasing.** Las Vegas Collegiate records expense on an accrual basis of accounting, consistent with GAAP. By the adoption of the operating budget by the Board of Directors, the Executive Director becomes responsible for, and generally authorized to, expend the amounts budgeted. While a capital budget may be approved, the Executive Director’s expenditure authority, in accordance with our proposed Financial Policies, limits purchasing in excess of \$10,000 per transaction. Commitments for expenditures exceeding this amount must have the co-signature of either the Board Treasurer or the Chairperson of the Board. Any purchase of over \$75,000 will require Las Vegas Collegiate to submit an RFP and identify the best value contractor, taking into account quality, performance, and price. **Payroll.** Las Vegas Collegiate’s payroll process will be performed by a third-party service provider, to be determined during our planning year. **Required Annual Audit.** Financial statements will be audited annually by an independent audit firm selected by the Board on the recommendation of the Finance Committee. The audit will include, but is not limited to, auditing the accuracy of the school’s financial statements, the attendance accounting and revenue accuracy practices, and the school’s internal controls. For more details on the annual audit, please see question 4 of this section. The internal financial controls are detailed below. **Segregation of Duties.** A hierarchical structure of authority and responsibility has been developed. Tasks are divided and allocated to guard against one individual having the ability to make an accounting error (either knowingly or unknowingly). This protects the school from any potential fraud or misappropriation of funds. **Document Control.** In order to ensure that all documents are captured by the accounting system, all documents must be initialed and dated when recorded and then filed appropriately. **Records Retention.** To provide an accurate and auditable record of all financial transactions, the school’s books, records, and accounts are maintained in conformity with GAAP. Records will be maintained for the periods sufficient to satisfy IRS regulations, federal grant requirements, if applicable, and other legal needs as may be determined. Record retention requirements are reviewed annually with legal counsel and independent auditors to determine any necessary changes. **Processing Controls.** These are designed to identify any errors *before* they are posted to the general ledger. Common processing controls are the following: (1) Source document matching; (2) Clerical accuracy of documents; and (3) General ledger account code checking. **Reconciliation Controls.** Designed to identify any errors *after* transactions have been posted and general ledger has been run, the process involves reconciling selected general ledger control accounts to subsidiary ledgers. **Security of Financial Data.** Accounting software is accessible only to the Executive Director, Dean of Operations, and third-party service provider. Individual ID codes and passwords are in place for every user and limit their access and functionality depending on their role within the school. All other hard copies of financial data, when not in use, will be secured in a locked closet or cabinet at the school. **Risk Assessment.** Our risk assessment process is designed to identify, analyze, and manage risk relevant to preparation of accurate financial statements. This includes mitigating risks involving internal and/or external factors that might adversely affect the ability to properly record, process, summarize, and report financial data.

- (2) **Attachment 3.** Present a budget narrative including a detailed description of assumptions and revenue estimates, including but not limited to the basis for revenue projections, staffing levels, and costs. The narrative should specifically address the degree to which the school budget will rely on variable income (e.g., grants, donations, fundraising, etc.). There is no page limit for the budget narrative. Include the following: A detailed discussion of Per-Pupil Revenue: Use the figures provided in developing your budget assumptions.
  - (a) Anticipated Funding Sources: Indicate the amount and sources of funds, property or other resources expected to be available through banks, lending institutions, corporations, foundations, grants, etc. Note which are secured and which are anticipated and include evidence of commitment for any funds on which the school’s core operation depends in a clearly identified component of **Attachment 3**. Please ensure that your narrative specifically references what page this evidence can be found on in the attachment.
  - (b) Anticipated Expenditures: Detail the personnel and operating costs assumptions that support the financial plan, including references to quotes received and the source of any data provided by existing charter school operators in Nevada or other states.

- (c) Discuss in detail the school's contingency plan to meet financial needs if anticipated revenues are not received or are lower than estimated, including both the scenarios identified in subsections e and f.
  - (d) Year 1 cash flow contingency in the event that state and local revenue projections are not met in advance of opening.
  - (e) Year 1 cash flow contingency in the event that outside philanthropic revenue projections are not met in advance of opening.
- (3) Submit a completed financial plan for the proposed school as an **Attachment 2** (the format of this is left to the applicant's discretion but must be clear and sufficiently detailed to permit Authority staff, external reviewers, and the general public to review of all elements of the school's business plan and gauge alignment and consistency with the academic program, operating plan, and budget narrative).
  - (4) Submit, as an **Attachment N/A**, a detailed budget for the operator at the network level (the format of this is left to the applicant's discretion but must be clear and sufficiently detailed to permit Authority staff, external reviewers, and the general public to review of all elements of the school's business plan and gauge alignment and consistency with the academic program, operating plan, and budget narrative).

**NOT APPLICABLE (N/A)**

- (5) Provide, as an **Attachment N/A**, historical financial documents for any affiliated CMO from another state or any EMO providing services to the school, including audited financials for each school operated by the affiliate as well as any other campus by campus financial evaluations conducted by charter school authorizers. At least three years of school financial audits are required for any school operating for three years or longer. Such financials must be provided as converted PDF documents to ensure accessibility.

**NOT APPLICABLE (N/A)**

- (6) Complete the audit data worksheet in **Attachment N/A**. In the info tab, please identify any schools or campuses listed under the student achievement tab for which, pursuant that relevant state's charter law, financial data is consolidated for reporting and auditing purposes in the independent audits provided in **Attachment N/A**.

**NOT APPLICABLE (N/A)**

- (7) Provide a six-year development plan that addresses the annual and cumulative fundraising need at the network and school levels including a description of the staff devoted to development. The plan should include a history of the school's fundraising outcomes and identify funds that have already been committed toward fundraising goals. The plan should also identify the role of the members of the board, particularly as relates to give/get requirements, and should demonstrate alignment with the expectations for board members discussed elsewhere in the amendment request. If funds are raised at a partner organization level, describe the methodology to be used in allocating funds to the school and the proposed campuses. If the school has not raised any funds to support its programming to date and the budget does not include any fundraising activity, please explain that this question is not applicable to your school.

**NOT APPLICABLE (N/A)** The included budget for Las Vegas Collegiate is not inclusive of any revenue raised through fund development therefore making this question non-applicable.

- (8) Describe the campus, school, and any management organization distinct responsibilities in the financial management and oversight of the proposed campuses, including, but not limited to, their respective roles in overseeing or implementing internal controls and in making financial management decisions including budget development. Detail the process and frequency by which key financial information is communicated to and reviewed by the various organizations and different levels of leadership and governance.

The Board will create a minimum of four standing committees: Governance, Finance, Academic, and Development. The Finance Committee is convened by and reports to Board. It has responsibility for: working with Executive Director to create upcoming fiscal year budget; presenting budget recommendations to Board; monitoring implementation of approved budget on regular basis (monthly) and recommending proposed budget revisions; recommending to the Board appropriate policies for management of organization's assets. The Finance Committee is assisted by Executive Director and back-office provider as needed. Responsibilities include (1) Reviewing and recommending to the Board approval of

annual budget for charter school in collaboration with Executive Director and Dean of Operations. (2) In collaboration with Executive Director, review, and recommend to Board for approval and annually revise, three-year financial forecast and long-range financial plans based on forecast. (3) Review grant proposals when required by funders, and when necessary, recommend action by Board. (4) Review all non-budgeted expenditures over set dollar amount to be determined by Board and recommend action to Board. (5) Annually submit objectives as part of planning and budgeting process. (6) Annually evaluate work as committee and objectives it has committed itself to and report on same to the Board. (7) Arrange annual audit with submission of same to Board. (8) Report to Board at regular Board meetings in manner determined by Board.

## **E) OPERATIONS PLAN**

◆ **Indicate “No Change” to the sections or subsections below, where applicable. Otherwise, all applications require completion of this section.**

### 1. Historical performance

- (a) Performance Data: schools are only eligible to complete the amendment request and business plan if the existing schools meet the Authority’s eligibility criteria; these criteria reflect a proven academic track record of success with Nevada students and our operating expectations or similar performance in another state. Please provide a narrative demonstrating that the school meets the organizational criteria for approval.
- (b) Interventions: Please explain any past organizational/compliance performance that has not met expectations. How did the governing body diagnose the under-performance, how were appropriate intervention(s) determined by the governing body, how are they being implemented by staff, and how is the governing body monitoring implementation of the interventions on a monthly basis?
- (c) What are the key areas in which the existing school or schools/campuses need to improve, as determined by the governing body, and what are the priorities to drive further success?

**NOT APPLICABLE (N/A)**

### 2. Organization governance structure & board development:

- (a) Describe how the organization’s governance structure will adapt to oversee and support the 6-year growth plan and addition of new school(s). Include any impact on: (1) the composition of the Board, the Board’s roles and responsibilities, and the Board’s development priorities and (2) the Board’s relationship to individual campuses
- (b) Describe the diverse skillsets that currently exist on the Board and note any additional type of expertise that the Board may seek to help support the growth plan.
- (c) Identify any Board development requirements relative to the organization’s governance needs at each stage of growth.
- (d) Describe how the Board identifies and addresses conflicts of interest. Attach a code of ethics that includes a formal conflict of interest policy and specifies the procedures for implementing the policy.

**NO CHANGE** from original application

### 3. Organization charts and decision-making authority:

- (a) Provide the following organizational charts:
  - (i) Current
  - (ii) Vision for school in three years (clearly identify both campuses requested in this amendment request as well as any additional campuses that the operator anticipates applying to open within three years)
  - (iii) Vision for school in six years (clearly identify both campuses requested in this amendment request as well as any additional campuses that the operator anticipates applying to open within six years)

The organization charts should represent all national and state operations and clearly delineate the roles and responsibilities of – and lines of authority and reporting among – the governing board, staff, any related bodies (e.g., advisory bodies or parent/teacher councils), and any external organizations that will play a role in managing the schools. If the school intends to contract with an education management organization or other management provider,

clearly show the provider's role in the organizational structure of the school, explaining how the relationship between the governing board and school administration will be managed. Please *include* all shared/central office positions and positions provided by *the Management Organization (CMO or EMO) in the organizational chart, if applicable*.

**NO CHANGE** from original application

4. Describe the proposed organizational model; include the following information:

- a) Job descriptions for each leadership or shared/central office role identified in the organizational chart (provide as an **Attachment N/A**).
- b) Resumes of all current leadership (provide as an **Attachment N/A**).
- c) Previous student achievement data for the proposed instructional leaders at each proposed campus (if available) (provide as part of **Attachment N/A**).

**NO CHANGE** from original application

5. Describe the leadership team's individual and collective qualifications for implementing the multi-site school design and business and operating plan successfully, including capacity in areas such as:

- (a) School leadership;
- (b) School business operations and finance;
- (c) Governance management and support to the Board;
- (d) Curriculum, instruction, and assessment;
- (e) At-risk students and students with special needs;
- (f) Performance management; and
- (g) Parent and community engagement.

**NOT APPLICABLE (N/A)**

6. Explain who is responsible for school leader coaching and training and what those processes will look like in action. Please include any existing competencies used for school leader selection and evaluation, if available (provide as an **Attachment N/A**).

**NO CHANGE** from original application

7. Explain your school leader's role in the successful recruitment, hiring, development and retention of a highly effective staff.

**NO CHANGE** from original application

8. Explain your campus instructional leader's role in providing instructional guidance and school culture guidance. How will the leadership team work in support of the campus instructional leader's guidance?

**NO CHANGE** from original application

9. What systems are in place in your leadership team structure to ensure redundancies in knowledge and skill?

**NO CHANGE** from original application

## **LEADERSHIP FOR EXPANSION**

- a) Describe the operator's current or planned process for recruiting and training potential network leaders. Explain how you have developed or plan to establish a pipeline of potential leaders for the network as a whole. If known, identify candidates already in the pipeline for future positions.
- b) Identify the proposed regional director candidate, if applicable, and explain why this individual is qualified to lead the expansion of the organization (provide a resume as an **Attachment N/A**). Summarize the proposed leader's academic and organizational leadership record. Provide specific evidence that demonstrates capacity to design, launch, and manage a high-performing charter school network.
- c) If a regional director candidate has not yet been identified, provide the job description (as an **Attachment**

N/A) or qualifications and discuss the timeline, criteria, and recruiting and selection process for hiring the regional director. Note: It is strongly encouraged that schools proposing to open new campuses in the 2021-22 school year, identify the regional leader (*Regional Director, Executive Director, etc.*) in the proposal. The SPCSA reserves the right to require schools which do not have network leadership and support position candidates identified to defer opening new campuses until the 2022-2023 school year and to add additional criteria to the pre-opening requirements for such campuses.

**NOT APPLICABLE (N/A)**

## STAFFING

- a) **Complete and submit a working copy of the RFA Staffing & Enrollment Worksheets Excel file.** indicating projected staffing needs for the proposed campuses over the next six years. Schools should also complete the second table outlining projected staffing needs for the entire network over the next six years. Include full-time staff and contract support that serve the network 50% or more. Change or add functions and titles and add or delete rows as needed to reflect organizational plans.

**Sample Excerpt—Complete using Excel file**

Year	2020-21	2021-22	2022-23	2023-24	2024-25	2025-26
<b>Management Organization Positions</b>						
Leadership	2	2	3	5	5	5
Classroom Educators		7	10	14	17	21
Support Staff			1	2	3	4
Special Education Staff		1	2	2	3	3
Bus Driver		1	2	2	3	3
Office Staff			1	1	2	2
[Specify]						
[Specify]						

**NO CHANGE** from original application

## HUMAN CAPITAL STRATEGY

Describe your strategy, plans, and timeline for recruiting and hiring teachers for a multi-site charter school. Explain key selection criteria and any special considerations relevant to your school design. *Note: schools with strong track records of academic success, as determined by the Department of Education, are eligible to waive teacher licensure requirements for all teachers except for special education and ELL professionals as long as they meet all other federal and state requirements. Maintaining such a waiver is contingent on the school continuing to achieve at the 3 Star level or higher (or equivalent) on the statewide system of accountability. Please refer to Section 46 of SB509 (2015 session) for additional information.*

- a) **Recruitment:** Identify whether recruitment will be managed at the campus or network level. Identify key partnerships and/or sources the operator will rely upon of teachers and leaders. Identify the process the operator will rely upon to identify and develop high-quality leaders and high-quality teachers.
- b) **Leadership Pipeline: Discuss the specific measures and timelines the organization will employ to identify and develop organizational and school leaders. For example, explain:**
- 1) How the school plans to identify leadership internally and externally;
  - 2) Who will be responsible for hiring leaders;
  - 3) Formal and informal systems that will prepare leaders for their responsibilities;
  - 4) The school’s philosophy regarding internal promotions;
  - 5) The timing for identifying leaders in relation to the launch of a new campus; and,

- 6) Internal or external leadership training programs.
- c) **Professional Development:** Identify the school’s plan to meet professional development needs. Include whether professional development will be managed at the school or network level and how new campuses will be added to existing professional development. Also identify the method the school will use to determine the effectiveness of professional development.
- d) **Performance Evaluations and Retention:** Identify the school’s approach to staff performance evaluations. Identify how frequently the organization plans to: evaluate teachers, campus administrators, and network leaders and staff, who will evaluate whom, and how the organization plans to retain high-performing teachers and administrators?
- e) **Compensation:** Explain the board’s compensation strategy and salary ranges for network and school level staff. Discuss how the compensation structure enables the organization to attract and retain high quality staff and describe any incentive structures such as bonuses or merit pay. Compare the proposed salary ranges to those in other organizations, charter schools and local districts, as applicable.

**NO CHANGE** from original application

**SCALE STRATEGY**

- a) Describe the steps that you will take to scale your model to new sites, including the people involved and the resources contributed both by the founding campus and the new campuses.
- b) If the school is affiliated with a CMO or EMO that operates schools in other states, compare your efforts to scale operations to Nevada to past scale efforts in other states.
- c) Describe your plan for embedding the fundamental features of the model that you described in the transformational change section in each new campus that you plan to open.
- d) Explain any shared or centralized support services the management organization will provide to campuses in Nevada.
- e) Describe the structure, specific services to be provided, the cost of those services, how costs will be allocated among campuses, and specific service goals of the network. Please also include how the school will measure successful delivery of these services. In the case of a charter management organization proposing to contract with an education management organization, service goals should be outlined in the term sheet and draft contract provided later in **Attachment N/A**. Note that Nevada law allows charter schools to contract for the management or operation of the school with either a for-profit or non-profit education management organization.
- f) Using the table below, summarize the division school- and organization-level decision-making responsibilities as they relate to key functions, including curriculum, professional development, culture, staffing, etc. This division of responsibilities will be evaluated both in the context of Nevada law and regulation and best organizational and authorizing practices nationally.

**NOT APPLICABLE N/A**

Function	Mgmt Org Decision-Making	Network Leader Decision-Making	Board Decision-Making	Campus Leader Decision-Making
Performance Goals				
Curriculum				
Professional Development				
Data Mgmt & Interim Assessments				

Promotion Criteria				
Culture				
Budgeting, Finance, and Accounting				
Student Recruitment				
School Staff Recruitment & Hiring				
HR Services (payroll, benefits, etc.)				
Development/ Fundraising				
Community Relations				
IT				
Facilities Mgmt				
Vendor Management / Procurement				
Student Support Services				
Other operational services, if applicable				

## STUDENT RECRUITMENT AND ENROLLMENT

Like all public schools, public charter schools must be open to any such child, regardless of that child’s race, gender, citizenship, or need for accommodations or special education services. Thus, recruitment and enrollment practices should demonstrate a commitment to providing all students equal opportunity to attend the school, and help schools avoid even the appearance of creating barriers to entry for eligible students.

- g. Explain the plan for student recruitment and marketing for the new campuses that will provide equal access to interested students and families, including how the school will comply with the requirements of SB208 (2015 session). Specifically, describe the plan for outreach to: families in poverty; academically low-achieving students; students with disabilities; and other youth at risk of academic failure. For schools which are giving one or more statutorily permissible admissions preferences pursuant to NRS 386.580 or SB390 (2015 session), please indicate if you plan to focus your student recruitment efforts in specific communities or selected attendance areas.

**NO CHANGE** from original application

- h. Provide a detailed discussion of the school’s track record in recruiting and retaining students that reflect the ethnic, socio-economic, linguistic, and special needs diversity of the current charter school and each campus to at least the level reflected by the attendance zones where the charter school will operate facilities before

approving the proposal. Please provide the school's past enrollment and retention performance for all years since the inception of the school broken out by race, ethnicity, language other than English, disability and 504 status, and eligibility for free and reduced priced lunch both as a school and in comparison, to the school's current zoned schools.

**NOT APPLICABLE (N/A)**

- i. Detail how the school's programmatic, recruitment, and enrollment strategies are designed to recruit, enroll, and retain a student population that is representative of the zoned schools which prospective students would otherwise attend in the community. Schools which do not currently represent their communities based on the data identified above and are not serving an at-risk population are expected to add several of the following programmatic, recruitment, and enrollment strategies to merit approval: (1) participation in state-funded pre-K programs (including federal pre-K) for low-income students; (2) substituting online and social media marketing which advantages affluent and well-connected populations with a community-based, grassroots campaign which targets high need populations in the community, including aggressive door-to-door outreach and publishing marketing materials in each language which is spoken by more than 5 percent of families within each attendance zone; (3) an explicit commitment to serving a broad continuum of students with disabilities and the expansion of programs, including cluster programs or consortia, to meet the needs of a broad spectrum of student needs; (4) a weighted lottery<sup>2</sup> which provides additional opportunities for specific target populations to be admitted to the school in a manner consistent with state and federal law; and (5) other enrollment policies and strategies which have had a demonstrated track record of success in dramatically increasing the diversity of student populations in a high achieving charter school to at least the poverty, disability, and ELL profile of the zoned school.

**NO CHANGE** from original application

- j. What is the enrollment calendar for both the first year of operation and subsequent years of operation? Please specify the dates on which the school will begin accepting applications and how long the enrollment window will last prior to conducting a lottery.

**NO CHANGE** from original application

- k. What enrollment targets will you set and who will be responsible for monitoring progress towards these targets? What is your target re-enrollment rate for each year? How did you come to this determination? What are the minimum, planned, and maximum projected enrollment at each grade level? Outline specific targets in the table below.

**NO CHANGE** from original application

- l. What systems will you put in place to ensure that staff members are knowledgeable about all legal enrollment requirements pertaining to special populations and the servicing of particular populations of students and can answer parent inquiries in a manner consistent with the letter and spirit of state and federal law?

**NO CHANGE** from original application

- m. Describe the student recruitment plan once your school has opened. In what ways will it be different than your pre-opening year, in terms of the strategies, activities, events, persons responsible and milestones? How will the school backfill vacancies in existing grades?

**NO CHANGE** from original application

- n. Complete the following tables for the proposed school to open in 2019-20. Schools applying for multiple campuses must complete enrollment summary tables for each school campus opening in fall 2019 and fall 2020.

Las Vegas Collegiate is requesting an amendment to enrollment to return to the original requested enrollment amount in our charter application. We will begin with 6 classrooms, 3 kindergarten and 3 first grade, 27 scholars each for a total of 162 scholars. We will grow by three classrooms (81 scholars) each year until we reach full

---

<sup>2</sup> See <http://www.publiccharters.org/wp-content/uploads/2015/09/CCSP-Weighted-Lottery-Policy-factsheet-updated-GS-8-27-2015-2.pdf> for one possible approach in this evolving area of charter school policy.



enrollment.

1) **Minimum Enrollment** (Must Correspond to Break Even Budget Scenario Assumptions discussed in budget narrative) *Complete using Excel file “RFA Staffing and Enrollment Worksheets.”*

**Sample Excerpt**

Grade Level	Number of Students					
	2020-21	2021-22	2022-23	2023-24	2024-25	2025-26
Pre-K						
K						
1						
2...						
10						
11						
12						
Total						

2) **Planned Enrollment** (Must Correspond to Budget Worksheet Assumptions) *Complete using Excel file “RFA Staffing and Enrollment Worksheets.”*

**Sample Excerpt**

Grade Level	Number of Students					
	2020-21	2021-22	2022-23	2023-24	2024-25	2025-26
Pre-K						
K...						
12						
Total						

3) **Maximum Enrollment** (Note: Enrolling more than 10 percent of the planned enrollment described in subsection b will necessitate a charter amendment) *Complete using Excel file “RFA Staffing and Enrollment Worksheets.”*

**Sample Excerpt**

Grade Level	Number of Students					
	2020-21	2021-22	2022-23	2023-24	2024-25	2025-26
Pre-K						
K						
12						
Total						

a. Describe the rationale for the number of students and grade levels served in year one and the basis for the growth plan illustrated above. Note: particular weight will be given to rationales which prioritize academic achievement over financial returns.

**NO CHANGE** from original application

b. Schools proposing to open new elementary facilities with more than 400 students or more than 3 grade levels should identify and discuss the specific elements of the school model and organizational track record detailed throughout the request that demonstrate that the proposed expansion model is designed to compensate for the known organizational and academic challenges which accompany serving larger

student bodies and multiple grade levels in a start-up environment.

**NOT APPLICABLE (N/A)**

- c. Schools proposing to add a new middle or high school facility with more than 200 newly enrolled students in sixth grade or above or more than 2 grades above fifth grade should identify and discuss the specific elements of the school model and organizational track record detailed throughout the request that demonstrate that the proposed expansion model is designed to compensate for the known organizational and academic challenges which accompany serving larger student bodies and multiple grade levels in a start-up environment.

**NOT APPLICABLE (N/A)**

**BOARD GOVERNANCE**

**Complete this section only to the extent it is different from what is shown in the application for the school. Otherwise, indicate “No change from original application or most recent amendment. See attached.”**

- o. Explain the governance philosophy that will guide the board, including the nature and extent of involvement of key stakeholder groups.
- p. Describe the governance structure of the expanded school when the board is fully composed, including the primary roles of the governing board and how it will interact with the principal/head of school and any advisory bodies. Explain how this governance structure and composition will help ensure that a) the school will be an educational and operational success; b) the board will evaluate the success of the school and school leader; and c) there will be active and effective representation of key stakeholders, including parents.
- q. Please submit board member information for current and proposed new board members in the provided Board Member Template (provide as part of **Attachment N/A**). Please note that at least 75% of new board members for SY 2020-2021 must be identified at the time of the submission of the expansion request.
- r. Provide, as part of **Attachment N/A**, a completed and signed Board Member Information Sheet for each proposed new Board member as well as the board member’s resume and a thoughtful biographical summary outlining the particular qualifications of each board member as relates to both service on a public charter school board and to the specific needs of this particular charter school.
- s. Describe the board’s ethical standards and procedures for identifying and addressing conflicts of interest. Will the board be making any changes to its Bylaws, Code of Ethics, and Conflict of Interest policy in light of the expansion or new statutory or regulatory requirements, including SB509?
- t. Identify any existing, proposed, or contemplated relationships that could pose actual or perceived conflicts if the expansion request is approved, including but not limited to any connections with landlords, developers, vendors, or others which will receive compensation or other consideration directly or indirectly from the school; discuss specific steps that the board will take to avoid any actual conflicts and to mitigate perceived conflicts, including the new requirements of a Code of Ethics in SB509 and the nepotism regulations applicable to charter schools.
- u. Describe the board’s history since inception, including a discussion of turnover. How does the board proactively manage governance and succession? How does the board propose to significantly exceed the statutory minimum criteria for board qualifications in light of the complexity and risk associated with governing a large, multi-site charter school network? What elements, characteristics, and behaviors of specific, analogous high performing multi-site charter school networks, non-profit social enterprises, and for-profit organizations with similar levels of revenues or complexity has the governing body elected to emulate in its governance and in the operation of the school? Describe concrete and specific plans for increasing the capacity of the governing board. How will the board continue expand and develop over time?

- v. Describe the kinds of orientation or training new board members will receive and what kinds of ongoing development existing board members will receive. The plan for training and development should include a timetable, specific topics to be addressed, and requirements for participation.
- w. Describe the working relationship between the board and staff (academic, operations, and financial) and the working relationship between the board, staff, and any education management organization. Outline the regular reports that will be provided to the board, their frequency, and who will provide them. This may include financial, operational, and/or academic reports.
- x. Describe any advisory bodies or councils to be formed, including the roles and duties of those bodies. Describe the planned composition; the strategy for achieving that composition; the role of parents, students, and teachers (if applicable); and the reporting structure as it relates to the school's governing body and leadership.
- y. Explain the process that the school will follow should a parent or student have an objection to a governing board policy or decision, administrative procedure, or practice at the school.
- z. What goals will be established for the board and how will board members be held accountable? Outline the key expectations for board members in the table below. What actions would trigger removal from the board and under what process?

**NO CHANGE** from original application

Goal	Purpose	Outcome Measure

**INCUBATION YEAR DEVELOPMENT**

- aa. Provide a detailed start-up plan as well as specific organizational goals for the planning year (SY 2020-2021) to ensure that the school is ready for a successful launch in fall 2021. Using the template provided, outline key activities, responsible parties, and milestones and submit as an **Attachment N/A**.
- bb. Please describe the plans for leadership training and development of the selected school leader during the incubation year prior to school opening and how these plans support your year 0 goals. If partnering with an organization, please briefly describe the main components of the training program.
- cc. Explain who will work on a full-time or nearly full-time basis immediately following assignment of a location to lead development of the school(s) and the plan to compensate these individuals.

**NO CHANGE** from original application

## SCHOOL MANAGEMENT CONTRACTS

Indicate “Not Applicable” if the school does not intend to amend an existing management contract or enter into a new management contract with a for-profit or non-profit education management organization (EMO).

- dd. How and why was the EMO selected?
- ee. Explain whether the management organization will provide services to the charter school as a whole or will it be assigned to provide specific services at an individual campus or campuses or a particular program (e.g. a portfolio management governance model).
- ff. Describe the relationship between the school governing board and the service provider, specifying how the governing board will monitor and evaluate the performance of the service provider, the internal controls that will guide the relationship, and how the governing board will ensure fulfillment of performance expectations.
- gg. Disclose fully and provide an explanation of any existing or potential conflicts of interest between the school governing board and proposed service provider or any affiliated business entities, including, without limitation, any past or current employment, business or familial relationship between any officer, employee, or agent of the proposed service provider and any prospective employee of the charter school, a member of the committee to form a charter school or the board of directors of the charter management organization, as applicable.
- hh. Please provide the following in **Attachment N/A**:
  1. A term sheet setting forth the proposed duration of the contract; roles and responsibilities of the governing board, the school staff, and the service provider; scope of services and resources to be provided by the EMO; performance evaluation measures and mechanisms; detailed explanation of all fees and compensation to be paid to the provider; financial controls and oversight; methods of contract oversight and enforcement by the governing board and/or school staff; investment disclosure; and conditions for renewal and termination of the contract;
  2. A draft of the proposed management contract which complies with NRS 386.562 and SB509 (2015 session) and all other applicable laws and regulations;
  3. As an exhibit to the proposed management contract, a crosswalk of the academic, financial, and organizational goals of the charter school set forth in the SPCSA Charter School Performance Framework, including the school’s mission-specific goals, and a clear identification of each of the performance goals and expectations for the education management organization related to each charter school goal. This will serve as the board’s primary evaluative tool for the education management organization.
  4. Documentation of the service provider’s for-profit or non-profit status and evidence that it is authorized to do business in Nevada.
  5. Provide a brief overview of the EMO/CMO's history.
  6. List any and all charter revocations or surrenders, bankruptcies, school closures, non-renewals, or shortened or conditional renewals for any of the schools managed by the organization and provide explanations. For all such schools, please provide contact information, including name, business mailing address, business telephone number—including extension or direct line, and business email address, for the current leader of the school’s authorizing office and a summary of the correspondence or discussions between members of the governing body and this individual and other knowledgeable authorizer personnel contacted. Include a summary of all performance issues related to each revocation, surrender, bankruptcy, closure, non-renewal, or shorted or conditional renewal. Discuss the lessons learned by the governing body based on this ongoing due diligence and how this research has informed provisions that the governing body has required in the proposed management agreement.
  7. Explain any performance deficits or compliance violations that have led to formal authorizer intervention with any school managed by the organization. Provide details as to how such deficiencies were resolved. For all such schools, please provide contact information, including name, business mailing address, business telephone number—including extension or direct line, and business email address, for the current leader of the school’s authorizing office and all other authorizer personnel contacted. Include a summary of the correspondence or discussions between members of the governing body and this individual and

other knowledgeable authorizer staff regarding all performance issues related to each non-renewal, shortened or conditional renewal, or renegotiation or reduction in services. Discuss the lessons learned by the governing body based on this ongoing due diligence and how this research has informed provisions that the governing body has required in the proposed management agreement.

8. List any and all management contract non-renewals, shortened or conditional renewals, or renegotiations or reductions in services provided for any of the schools managed by the organization and provide explanations. For all such schools which are still in operation, please provide contact information, including name, legal home or business mailing address, home or business telephone number, and personal or business email address, for the current board chair office and all other board members and school personnel contacted. Include a summary of the correspondence or discussions between members of the governing body and this individual and other knowledgeable staff or board members regarding all performance issues related to each non-renewal, shortened or conditional renewal, or renegotiation or reduction in services. Discuss the lessons learned by the governing body based on this ongoing due diligence and how this research has informed provisions that the governing body has required in the proposed management agreement.

**NOT APPLICABLE (N/A)**

## **SERVICES**

9. Provide **Attachment** N/A describing how the school leadership team will support operational execution.

**NO CHANGE** from previous amendment

10. Provide narrative or evidence illustrating the staffing model, performance metrics, and the school's plan for supporting all operational needs of the school, including but not limited to those listed below.

**NOT APPLICABLE (N/A)**

11. In this space and in the finances section, demonstrate how you will fund the provision of the services below which you are requesting approval to implement.

- i. Transportation: Describe your plans for providing student transportation. If the school will not provide transportation, please identify how the school will ensure that this does serve as a barrier to enrollment or ongoing attendance.

**NO CHANGE** from previous amendment

- ii. Food Service: Outline your plans for providing food service at the school, including whether and how you will be your own school food authority or will contract with another provider. If the school will not provide food service, please identify how the school will ensure that this does serve as a barrier to enrollment or ongoing attendance.

**NO CHANGE** from original application

- iii. Facilities maintenance (including janitorial and landscape maintenance)

**NO CHANGE** from original application

- iv. Safety and security (include any plans for onsite security personnel)

**NO CHANGE** from original application

- v. Other services

**NO CHANGE** from original application

12. Technology: Outline the technology infrastructure and support mechanisms across your school, staff, and teachers. Your outline should include but not be limited to reliable and secure wide area networking, local area networking (e.g., wireless and cables), hardware (e.g., personal computing devices, servers, telephony,

storage, routers, switches), technology policies and procedures, device management, and end user support, including the management of user rights and privileges.

**NO CHANGE** from original application

13. Student Information Management: Timely communication of accurate student information is critical for payments to schools, compliance, and performance monitoring. Please describe how you will manage student information using the statewide Infinite Campus system, and how you will build capacity around the use of the software in order to independently maintain the system. Detail the staff members who will enter data along with the project manager who will commit to trainings and regularly monitor student information for accuracy.

**NO CHANGE** from original application

14. Data Security: SPCSA charter schools record, generate and consume data that falls under strict requirements for security, privacy, and retention (including FERPA and recent legislation related to the protection of personally identifiable information (PII)). Describe the systems and procedures you will implement in order to ensure you are compliant with these obligations.

**NO CHANGE** from original application

15. Provide, as an Attachment\_\_\_, a detailed operational execution plan which discusses the planning and provision of these and other essential operational services in greater detail.

**NO CHANGE** from original application

## **ONGOING OPERATIONS**

16. SPCSA schools coordinate emergency management with local authorities. Explain your process to create and maintain the school's Emergency Management Plan required by the State of Nevada. Include the types of security personnel, technology, equipment, and policies that the school will employ. Who will be primarily responsible for this plan? Does the school anticipate contracting with the local school district for school police services? How will the school communicate with and coordinate with lead law enforcement agencies and other public safety agencies?

**NO CHANGE** from original application

17. Discuss the types of insurance coverage the school will secure as a result of the expanded scope of operation and the attendant risks, including a description of the levels of coverage. Types of insurance should include workers' compensation, liability insurance for staff and students, indemnity, directors and officers, automobile, and any others required by Nevada law or regulation. As the minimum coverage required by Nevada law and regulation is intended as a baseline requirement for schools which operate at a significantly smaller scale, schools requesting an amendment are expected to research the levels of and types of insurance coverage typically required of and obtained by multi-site charter school networks in other states, including but not limited to Arizona, California, Colorado, the District of Columbia, Massachusetts, and New York, and crosswalk those levels of coverage with those the school intends to obtain to ensure that the governing body and network leadership is fully cognizant of the complexity of risk management in a multi-site context.

**NO CHANGE** from original application

## **Section II: SPECIFIC RFA SECTIONS**

### **RFA: Academic Amendments**

#### **1. RFA: Add Distance Education**

- a. Executive Summary

- i. An overview of the mission and vision for the expanded school or network, noting any revisions to the approved mission and vision for the school relating to the addition of a distance education program.
  - ii. A list of the current school campuses
  - iii. Proposed model and target communities by zip code
  - iv. The outcomes you expect to achieve across the network of campuses with the addition of the distance education program.
  - v. The key components of your educational model and how the distance education program aligns with the educational model.
  - vi. Key supporters, partners, or resources that will contribute to the distance education program
- b. Targeted Plan
- i. Identify the community you wish to serve as a result of the distance education program and describe your interest in serving this specific community.
  - ii. Explain how your distance education model, and the commitment to serve the population, including the grade levels you have chosen, would meet the district and community needs and align with the mission of the SPCSA.
- c. Distance Education Requirements
- i. Describe the system of course credits that the school will use.
  - ii. Describe how the school will monitor and verify the participation in and completion of courses by pupils.
  - iii. Describe how the school will ensure students participate in assessments and submit coursework.
  - iv. Describe how the school will conduct parent-teacher conferences.
  - v. Describe how the school will administer all tests, examinations or assessments required by state or federal law or integral to the performance goals of the charter school in a proctored setting.
- d. Special Education
- i. For Distance Education Schools: Describe how the school will provide appropriate services in the distance education learning environment to students with disabilities across a broad continuum.
  - ii. What systems will you put in place to ensure that staff members are knowledgeable about all legal distance education requirements pertaining to special populations and the servicing of particular populations of students and can answer parent inquiries in a manner consistent with the letter and spirit of state and federal law?
- e. Scale Strategy
- i. Describe the steps that you will take to scale your model to new sections, including the people involved and the resources contributed both by the founding campus and the new distance education program.
  - ii. If the school is affiliated with a CMO or EMO that operates distance education in other states, compare your efforts to scale distance education operations to Nevada to past scale distance education efforts in other states.
- f. Student Recruitment and Enrollment
- i. Explain the plan for student recruitment and marketing for the new distance education program that will provide equal access to interested students and families, including how the school will comply with the requirements of SB208 (2015 session). Specifically, describe the plan for outreach to: families in poverty; academically low-achieving students; students with disabilities; and other youth at risk of academic failure.
  - ii. What is the enrollment calendar for both the first year of operation and subsequent years of operation? Please specify the dates on which the school will begin accepting distance education applications and how long the window will last prior to conducting a lottery.
  - iii. What distance education enrollment targets will you set and who will be responsible for monitoring progress towards these targets? What is your target re-enrollment rate for each year? How did you come to this determination?
- g. Services
- i. Provide a description of how the school leadership team will support the distance education operational execution. Please provide narrative or evidence that illustrates the staffing model,

performance metrics, and the school’s plan for supporting all operational needs of the school, including but not limited to those listed below. In this space and in the finances section, demonstrate how you will fund the provision of these services.

- ii. **Technology:** Outline the technology infrastructure and support mechanisms across your school, staff, and teachers—including new investments necessary to support this distance education expansion. Your outline should include but not be limited to reliable and secure wide area networking, local area networking (e.g., wireless and cables), hardware (e.g., personal computing devices, servers, telephony, storage, routers, switches), technology policies and procedures, device management, and end user support, including the management of user rights and privileges.

h. **Financial**

Describe the costs associated with the inclusion of the Distance Education program including technology infrastructure and support mechanisms across your school, staff, and teachers—including new investments necessary to support this distance education expansion. Your outline should include but not be limited to reliable and secure wide area networking, local area networking (e.g., wireless and cables), hardware (e.g., personal computing devices, servers, telephony, storage, routers, switches), technology policies and procedures, device management, and end user support, including the management of user rights and privileges.

**NOT APPLICABLE (N/A)** Las Vegas Collegiate is not making a request to add distance education.

## **2. RFA: Add Dual-Credit Program**

Charter schools which would like to provide a program where a student may earn college credit for courses taken in high school must request this amendment by responding to the general sections of this RFA and the following specific program questions.

- a. Describe the proposed duration of the relationship between the charter school and the college or university and the conditions for renewal and termination of the relationship.
- b. Identify roles and responsibilities of the governing body of the charter school, the employees of the charter school and the college or university.
- c. Discuss the scope of the services and resources that will be provided by the college or university.
- d. Explain the manner and amount that the college or university will be compensated for providing such services and resources, including, without limitation, any tuition and fees that pupils at the charter school will pay to the college or university.
- e. Describe the manner in which the college or university will ensure that the charter school can effectively monitors pupil enrollment and attendance and the acquisition of college credits.
- f. Identify any employees of the college or university who will serve on the governing body of the charter school.

Provide as an **Attachment**\_\_\_\_, a draft memorandum of understanding between the charter school and the college or university through which the credits will be earned and a term sheet confirming the commitment of both entities to the specific terms outlined in this charter application. If the school is not planning to provide a dual-credit program, please upload an attestation explaining that this request is inapplicable.

**NOT APPLICABLE (N/A)** Las Vegas Collegiate is not making a request to add a dual-credit program.

## **3. RFA: Change Mission and/or Vision**

For an RFA to accomplish this objective:

- a. Complete and submit your RFA with the General application sections above completed.
- b. The notice of intent and the RFA must include an explanation of the reasons that the charter school is seeking to make this specific requested change.
- c. Indicate “N/A” for any below requested response that is not applicable to your request.

**NOT APPLICABLE (N/A)** Las Vegas Collegiate is not making a request to change the mission or vision.



#### **4. RFA: Eliminate a grade level or other educational services**

For an RFA to accomplish this objective, pursuant to NAC 388A.325:

- a) Complete and submit your RFA with the General Requirements sections above completed.
- b) The notice of intent and the RFA must include an explanation of the reasons that the charter school is seeking to make this specific requested change.

**NOT APPLICABLE (N/A)** Las Vegas Collegiate is not making a request to eliminate a grade level or other education services.

#### **5. RFA: EMOs/CMOs: Entering, amending, renewing, terminating charter contract with EMO/CMO**

##### **a) School Management Contracts**

1. RFAs for “entering into, amending, renewing or terminating a contract with an educational management organization” are processed pursuant to NAC 388A.575
2. Contracts with EMOs are regulated in part pursuant to NAC 388A.580.
3. Limitations on the provision of teachers and other personnel by EMOs is regulated pursuant to NAC 388A.585.
4. Please provide the EMO’s Tax Identification Number (EIN), Organizational Location Address, and Organizational Mailing Address.
5. How and why was the EMO selected?
6. If this amendment would result in the approval of an EMO other than that approved in the initial charter application, please explain in detail the rationale for the change.
7. Explain whether the management organization will provide services to the charter school as a whole or will it be assigned to provide specific services at an individual campus or campuses or a particular program (e.g. a portfolio management governance model).
8. Describe the relationship between the school governing board and the service provider, specifying how the governing board will monitor and evaluate the performance of the service provider, the internal controls (including any compensatory controls) that will guide the relationship, and how the governing board will ensure fulfillment of performance expectations.
9. Disclose fully and provide an explanation of any existing or potential conflicts of interest between the school governing board and proposed service provider or any affiliated business entities, including, without limitation, any past or current employment, business or familial relationship between any officer, employee, or agent of the proposed service provider and any other current or prospective vendor or contractor (including the landlord), prospective employee of the charter school, a member of the committee to form a charter school or the board of directors of the charter management organization, as applicable.
10. Provide a brief overview of the organization's history.
11. List any and all charter revocations or surrenders, bankruptcies, school closures, non-renewals, or shortened or conditional renewals for any of the schools managed by the organization and provide explanations. For all such schools, please provide contact information, including name, business mailing address, business telephone number—including extension or direct line, and business email address, for the current leader of the school’s authorizing office and a summary of the correspondence or discussions between members of the governing body and this individual and other knowledgeable authorizer personnel contacted. Include a summary of all performance issues related to each revocation, surrender, bankruptcy, closure, non-renewal, or shorted or conditional renewal. Discuss the lessons learned by the governing body based on this ongoing due diligence and how this research has informed provisions that the governing body has required in the proposed management agreement.
12. Explain any performance deficits or compliance violations that have led to formal authorizer intervention with any school managed by the organization. Provide details as to how such deficiencies were resolved. For all such schools, please provide contact information, including name, business mailing address, business telephone number—including extension or direct line, and business email address, for the current leader of the school’s authorizing office and all other authorizer personnel contacted. Include a summary

of the correspondence or discussions between members of the governing body and this individual and other knowledgeable authorizer staff regarding all performance issues related to each non-renewal, shortened or conditional renewal, or renegotiation or reduction in services. Discuss the lessons learned by the governing body based on this ongoing due diligence and how this research has informed provisions that the governing body has required in the proposed management agreement.

13. List any and all management contract non-renewals, shortened or conditional renewals, or renegotiations or reductions in services provided for any of the schools managed by the organization and provide explanations. For all such schools which are still in operation, please provide contact information, including name, legal home or business mailing address, home or business telephone number, and personal or business email address, for the current board chair office and all other board members and school personnel contacted. Include a summary of the correspondence or discussions between members of the governing body and this individual and other knowledgeable staff or board members regarding all performance issues related to each non-renewal, shortened or conditional renewal, or renegotiation or reduction in services. Discuss the lessons learned by the governing body based on this ongoing due diligence and how this research has informed provisions that the governing body has required in the proposed management agreement.

**NOT APPLICABLE (N/A)** Las Vegas Collegiate does not have a CMO/EMO.

#### **b) Financial Plan**

1. Describe the systems and processes by which the school will manage accounting, purchasing, payroll, and audits. Specify any administrative services expected to be contracted for the school and describe the criteria and procedures for the selection of contractors and the mechanism by which the board will monitor and hold the contractor responsible for providing such services.

Refer to Section D: Financial Plan beginning on page 16.

2. Present a budget narrative including a detailed description of assumptions and revenue estimates, including but not limited to the basis for revenue projections, staffing levels, and costs. The narrative should specifically address the degree to which the school budget will rely on variable income (e.g., grants, donations, fundraising, etc.).

Refer to Section D: Financial Plan beginning on page 16.

3. Provide a six-year development plan that addresses the annual and cumulative fundraising need at the network and school levels including a description of the staff devoted to development. The plan should include a history of the school's fundraising outcomes and identify funds that have already been committed toward fundraising goals. The plan should also identify the role of the members of the board, particularly as relates to give/get requirements, and should demonstrate alignment with the expectations for board members discussed elsewhere in the amendment request. If funds are raised at a partner organization level, describe the methodology to be used in allocating funds to the school and the proposed campuses. If the school has not raised any funds to support its programming to date and the budget does not include any fundraising activity, please explain that this question is not applicable to your school.

Refer to Section D: Financial Plan beginning on page 16.

4. Describe the campus', school's, and any management organization's distinct responsibilities in the financial management and oversight of the proposed campuses, including, but not limited to, their respective roles in overseeing or implementing internal controls and in making financial management decisions including budget development. Detail the process and frequency by which key financial information is communicated to and reviewed by the various organizations and different levels of leadership and governance.

Refer to Section D: Financial Plan beginning on page 16.

5. Submit a completed financial plan for the proposed school as an **Attachment 2** (the format of this is left to the applicant's discretion but must be clear and sufficiently detailed to permit Authority staff, external reviewers, and the general public to review of all elements of the school's business plan and gauge alignment and consistency with the academic program, operating plan, and budget narrative).

Refer to Section D: Financial Plan beginning on page 16

6. Submit, as an **Attachment N/A**, a detailed budget for the operator at the network level (the format of this is left to the applicant's discretion but must be clear and sufficiently detailed to permit Authority staff, external reviewers, and the general public to review of all elements of the school's business plan and gauge alignment and consistency with the academic program, operating plan, and budget narrative).

**NOT APPLICABLE (N/A)**

7. Provide, as an **Attachment N/A**, historical financial documents for any affiliated CMO from another state or any EMO providing services to the school, including audited financials for each school operated by the affiliate as well as any other campus by campus financial evaluations conducted by charter school authorizers. At least three years of school financial audits are required for any school operating for three years or longer. Such financials must be provided as converted PDF documents to ensure accessibility.

**NOT APPLICABLE (N/A)**

8. Complete the audit data worksheet in **Attachment N/A**. In the info tab, please identify any schools or campuses listed under the student achievement tab for which, pursuant that relevant state's charter law, financial data is consolidated for reporting and auditing purposes in the independent audits provided in **Attachment N/A**.

**NOT APPLICABLE (N/A)**

**Attachments Necessary for EMO Amendment**

- 1) A letter of transmittal signed by the Board chair formally requesting the amendment and identifying each of the elements to be submitted in support of the request.
- 2) Agenda for Board Meeting Where Board Voted to Request an Amendment to Contract with an Educational Management Organization, Renew a Contract with an Educational Management Organization, Terminate a Contract or Discontinue Negotiations with an Educational Management Organization, and/or Amend a Contract with an Educational Management Organization.
- 3) Draft or Approved Minutes for Board Meeting Where Board Voted to Request an Amendment to Contract Educational Management Organization, Renew a Contract with an Educational Management Organization, Terminate a Contract or Discontinue Negotiations with an Educational Management Organization, and/or Amend a Contract with an Educational Management Organization.
- 4) Final Term Sheet
- 5) Final, negotiated and executed contract between charter school and educational management organization which complies with NRS 388A, NAC 388A and all other applicable laws and regulations.
- 6) A term sheet signed by the Chief Executive Officer of the Service Provider setting forth the proposed duration of the contract; roles and responsibilities of the governing board, the school staff, and the service provider; scope of services and resources to be provided by the EMO; performance evaluation measures and mechanisms; detailed explanation of all fees and compensation to be paid to the provider; financial controls and oversight; methods of contract oversight and enforcement by the governing board and/or school staff; investment disclosure; and conditions for renewal and termination of the contract;
- 7) Crosswalk of academic, organizational, and financial framework deliverables under the charter contract which will be delegated to or supported in whole or in part by the Educational Management Organization.
- 8) Documentation of Service Provider's non-profit or for-profit status

- 9) Documentation of Service Provider’s authorization to do business in Nevada (e.g. current business license)
- 10) Budget Narrative
- 11) School Budget
- 12) Network Budget
- 13) Historical Audits
- 14) Audit Data Worksheet
  - (a) Academic Performance Worksheet
  - (b) Good Cause Exemption Letter
  - (c) A final crosswalk of the academic, financial, and organizational goals of the charter school set forth in the SPCSA Charter School Performance Framework, including the school’s mission-specific goals, and a clear identification of each of the performance goals and expectations for the education management organization related to each charter school goal. This will serve as the board’s primary evaluative tool for the education management organization.

**NOT APPLICABLE (N/A)** Las Vegas Collegiate is not managed by a CMO/EMO

## 6. RFA: Enrollment: Expand Enrollment In Existing Grade Level(s) And Facilities

The purpose of this Expansion Amendment Request is to assess the potential of existing charter school boards to produce high-quality student outcomes and function as highly effective, accountable, and transparent providers of public education as they add new students and demonstrate the capability and maturity to achieve at consistently high levels in all domains while continuing to scale their impact in their communities and in other communities across the state.

- a. Please detail how this proposed expansion aligns to the current [SPCSA Academic and Demographic Needs Assessment](#).

Las Vegas Collegiate is seeking to increase our enrollment numbers back to the originally approved number of 162. This will allow us to serve more children in need of high-quality education.

- b. Please provide academic performance data broken down by subgroups. What is the school’s assessment of its current work in preventing performance gaps? If gaps exist, how is the school working to ensure that these gaps are reduced? How will the school work to prevent gaps with expanded enrollment?
- c. Please provide an overview of discipline data, broken down by subgroup. What is the school’s assessment of its current work in preventing disproportionate discipline practices? How will the school work to prevent disproportionate discipline practices with expanded enrollment? Please be sure to speak to the restorative justice practices implemented at the school.

**NOT APPLICABLE (N/A)** Las Vegas Collegiate does not have enrolled scholars at this time.

What is your current enrollment for the prior years in your current contract?

Year	2021-22	2022-23	2023-24	2024-25	2025-26	2026-27
Enrollment	135	216	297	378	459	486

What is your projected enrollment for the years for which you are requesting an expansion?

Year	2021-22	2022-23	2023-24	2024-25	2025-26	2026-27
Enrollment	162	243	342	405	486	486

## 7. RFA: Enrollment: Expand Enrollment in New Grade Level(s)

For an RFA to accomplish this objective:

- a) Complete and submit your RFA with the General application sections above completed.
- b) The notice of intent and the RFA must include an explanation of the reasons that the charter school is seeking to make this specific requested change.

The purpose of this Expansion Amendment Request is to assess the potential of existing charter school boards to produce high-quality student outcomes and function as highly effective, accountable, and transparent providers of public education as they add new students and demonstrate the capability and maturity to achieve at consistently high levels in all domains while continuing to scale their impact in their communities and in other communities across the state.

The expansion request is evaluated based on the strength of the plan in each of those domains, while applicants are evaluated based on their capacity to execute the program they've proposed both based on the coherence, thoroughness, and thoughtfulness of each element of the application and on the data gathered during both the (discretionary) capacity interview process and background research and due diligence on both proposed members of the expanded governing board and proposed staff members. Successful requests will share many of the same characteristics.

This amendment request form pre-supposes that the school plans to utilize the existing facility.

If the current facility requires no construction or renovation to accommodate the addition of these new grades, then provide a brief narrative at each attachment attesting to that fact. Each attestation must be signed by the chair of the governing body and the school leader, must be notarized, and must be remediated to be accessible pursuant to Section 508 of the Rehabilitation Act.

If the existing campus or campus(es) requires any construction or renovation after the date of submission of this request and prior to the commencement of instruction, then answer the applicable specific facility related section questions.

- a. Please detail how this proposed expansion aligns to the current [SPCSA Academic and Demographic Needs Assessment](#).
- b. Please provide academic performance data broken down by subgroups. What is the school's assessment of its current work in preventing performance gaps? If gaps exist, how is the school working to ensure that these gaps are reduced? How will the school work to prevent gaps with expanded enrollment?
- c. Please provide an overview of discipline data, broken down by subgroup. What is the school's assessment of its current work in preventing disproportionate discipline practices? How will the school work to prevent disproportionate discipline practices with expanded enrollment? Please be sure to speak to the restorative justice practices implemented at the school.

**NOT APPLICABLE (N/A)** Las Vegas Collegiate is not requesting to expand enrollment in new grade levels.

### **Facility RFAs**

**1. RFA: Acquire or construct a facility that will not affect approved enrollment (NAC 388A.320)**

- a. Complete the general sections above and the general and specific facility sections below
- b. If there is no change to any part of the below specific section or specific sub-sections from your current contract...state "No change to section" in a row inserted below the heading of the applicable section.
- c. The notice of intent and the RFA must include an explanation of the reasons that the charter school is seeking to make this specific requested change.
- d. Provide a narrative explaining the proposed use of any savings generated through lower facilities occupancy costs.

**NOT APPLICABLE (N/A)**

**2. RFA: Occupy New or Additional Sites (NAC 388A.315)**

- a. Complete the general sections above and the general and specific facility sections below
- b. If there is no change to any part of the below specific section or specific sub-sections from your current contract...state "No change to section" in a row inserted below the heading of the applicable section.
- c. The notice of intent and the RFA must include an explanation of the reasons that the charter school is seeking to make this specific requested change.

**NOT APPLICABLE (N/A)**

**3. RFA: Occupy a Temporary Facility**

- a. Complete the general sections above and the general and specific facility sections below
- b. If there is no change to any part of the below specific section or specific sub-sections from your current contract...state "No change to section" in a row inserted below the heading of the applicable section.
- c. The notice of intent and the RFA must include an explanation of the reasons that the charter school is seeking to make this specific requested change.

**4. RFA: Relocate or Consolidate Campuses**

- a. Complete the general sections above and the general and specific facility sections below
- b. If there is no change to any part of the below specific section or specific sub-sections from your current contract...state "No change to section" in a row inserted below the heading of the applicable section.
- c. The notice of intent and the RFA must include an explanation of the reasons that the charter school is seeking to make this specific requested change.

**General Facility RFA requirements**

1. Describe the school's capacity and experience in facilities acquisition and development, including managing build-out and/or renovations, as applicable. Provide a description and analysis of any construction or development delays which have impacted a school or campus calendar and schedule in the past and a discussion of any organizational or operational adjustments that have been made to prevent recurrence in the future.

**NOT APPLICABLE (N/A).** We do not anticipate and are not requesting any construction prior to the start of the school year in year 1.

2. Identify the entity responsible for acquiring and maintaining school facilities and describe that entity's relationship to both the school and any management organization. If costs related to the facility will be borne by the proposed school's education management organization or a related party such as a foundation, it should identify the level of capital support the organization (or related party) is willing to provide to the school.

**NOT APPLICABLE (N/A).**

3. If a proposed facility **has been** identified and **requires no construction or renovation** prior to the commencement of instruction, please provide:
  - a) The physical address of the facility and supporting documentation verifying the location, including the Assessor's Parcel Number and a copy of the Assessor's Parcel Map for the proposed facility.
  - b) A copy of the current deed on the property (if the school owns the facility) or a copy of the proposed lease or rental agreement noting any additional square footage to be leased.
  - c) A copy of the proposed purchase and sale agreement or a copy of the proposed lease or rental agreement.
  - d) A copy of the floor plan of the facility, including a notation of the size of the facility which is set forth in square feet AND an assurance the school will submit final documentation in compliance with NAC 386.3265.
  - e) The name, address, and full contact information of the current owner of the facility and any proposed landlord and a disclosure of any relationship between the current owner or landlord and the school, including but not limited to any relative of a board member or employee within the third degree of consanguinity or affinity and any connection with an educational management organization, foundation, or other entity which does business with or is otherwise affiliated with the school as an **Attachment** \_\_\_\_.

- f) A copy of the Certificate of Occupancy at **Attachment**\_\_\_\_\_.
- g) Documentation demonstrating that the proposed facility meets all applicable building codes, codes for the prevention of fire, and codes pertaining to safety, health and sanitation as an **Attachment**\_\_\_\_\_.
- h) Documentation demonstrating the governing Body has communicated with the Division of Industrial Relations of the Department of Business and Industry regarding compliance with the federal Occupational Safety and Health Act (OSHA) in compliance with NAC 386.3265 as an **Attachment**\_\_\_\_\_.

**NOT APPLICABLE (N/A).** The proposed location has not yet been identified.

4. If a proposed facility has **not** been identified or the proposed facility **requires any construction or renovation** prior to the commencement of instruction, please provide:
  - a) Either a discussion of the desired community of location and the rationale for selecting that community AND an assurance that the school will submit the documentation required in 1(a) for review and approval prior to acquisition of any facility in compliance with NAC 386.3265 as an **Attachment 5** OR the physical address of the proposed facility which requires construction or renovation and supporting documentation verifying the location, including the Assessor's Parcel Number and a copy of the Assessor's Parcel Map for the proposed facility as an **Attachment N/A**.
  - b) Either a narrative explaining the rationale for the budgeted cost of acquisition of an owned or leased facility AND an assurance that the school will submit such documentation for review and approval prior to acquisition of any facility in compliance with NAC 386.3265 as an **Attachment 2** OR, if a facility has been identified which requires construction or renovation, a copy of the proposed purchase and sale agreement or a copy of the proposed lease or rental agreement as an **Attachment N/A**.
  - c) Either a discussion of the general specifications to be utilized during the facility search, including approximate square footage AND an assurance that the school will submit such documentation for review and approval prior to acquisition of any facility in compliance with NAC 386.3265 as an **Attachment 5** OR, if a facility location has been identified but requires construction or renovation, a copy of the proposed floor plan of the facility, including a notation of the size of the facility which is set forth in square feet AND an assurance that the school will submit final documentation in compliance with NAC 386.3265 as an **Attachment N/A**.
  - d) Either a description of the process and resources the school will use to identify a facility AND an assurance that the school will submit such information for review and approval prior to acquisition of any facility in compliance with NAC 386.3265 as an **Attachment**\_\_\_\_\_ OR, If a facility has been identified but requires construction or renovation, the name, address, and full contact information of the current owner of the facility and any proposed landlord and a disclosure of any relationship between the current owner or landlord and the school, including but not limited to any relative of a board member or employee within the third degree of consanguinity or affinity and any connection with an educational management organization, foundation, or other entity which does business with or is otherwise affiliated with the school as an **Attachment**\_\_\_\_\_.
  - e) A detailed construction project plan and timeline, including a Gantt chart, identifying all facility development activities necessary to obtain a full certificate of occupancy prior to the first day of school AND documentation of the inspection and approval processes and timelines for the state, municipal, or county agencies which will issue the Certificate of Occupancy, including a discussion of whether such agencies issue temporary or conditional approvals and a copy of the standard form documentation that the sponsor can consult in such circumstances to confirm compliance with NAC 386.3265 as an **Attachment**\_\_\_\_\_.
  - f) A detailed construction project plan and timeline, including a Gantt chart, identifying all facility development activities necessary to obtain all such code approvals prior to the first day of school AND documentation of the inspection and approval processes and timelines for the state, municipal, or county agencies which will conduct all code inspections, including a discussion of whether such agencies issue temporary or conditional approvals and a copy of the standard form documentation that the sponsor can consult in such circumstances to confirm compliance with NAC 386.3265 as an **Attachment**\_\_\_\_\_.
  - g) Documentation demonstrating the governing Body has communicated with the Division of Industrial Relations of the Department of Business and Industry regarding compliance with the federal Occupational Safety and Health Act (OSHA) in compliance with NAC 386.3265 as an **Attachment**\_\_\_\_\_.
5. For schools which are seeking to occupy multiple facilities over several years, please list the number of facilities

you project operating in each of the next six years and identify all potential target jurisdictions at the county and municipal levels, including any unincorporated areas.

- a) Describe the strategy and process for identifying and securing multiple facilities, including any brokers or consultants you are employing to navigate the real estate market, plans for renovations, timelines, bond or third-party financing, etc.
- b) Charter school facilities must comply with health and safety requirements and all other mandates prescribed in statute and regulation. In addition, charter schools must be prepared to follow applicable county and municipal review procedures which vary significantly between jurisdictions. Schools are expected demonstrate that they have thoroughly researched the different local requirements and adjust their permitting, construction, and inspection timelines accordingly. Discuss the research and planning that has occurred to date for each of the targeted jurisdictions, including both municipalities and unincorporated areas. Provide documentation of the current inspection and approval processes and timelines for the state, municipal, or county agencies within your proposed jurisdictions which will issue each Certificate of Occupancy, including a discussion of whether such agencies issue temporary or conditional approvals and a copy of the standard form documentation that the sponsor can consult in such circumstances to confirm compliance with NAC 386.3265 as part of an **Attachment** \_\_\_\_. Provide documentation of building, fire, safety, health and sanitation code compliance inspection and approval processes and timelines for the state, municipal, or county agencies which will conduct all such code inspections within your proposed jurisdictions, including a discussion of whether such agencies issue temporary or conditional approvals and a copy of the standard form documentation that the sponsor can consult in such circumstances to confirm compliance with NAC 386.3265 as part of **Attachment** \_\_\_\_.

**NOT APPLICABLE (N/A).**

6. Please include the organization's plans to finance these facilities, including:
  - a) Indicate whether the school intends to finance these facilities through the Department of Business and Industry (B&I) or another bond conduit. If the school is not using the B&I conduit, please identify the proposed issuer of the bonds. Please provide a rationale for the selection of this issuer, and a comparative analysis with any other issuers considered by the school.
  - b) Total project cost for each facility
  - c) Financing and financing assumptions
  - d) Total facility costs that the financial model can handle – debt service + lease + maintenance + utilities + etc. for each facility and for the network as a whole.

**NOT APPLICABLE (N/A)**

### **Facility RFA Attachments required**

1. A letter of transmittal signed by the Board chair formally requesting the amendment and identifying each of the elements to be submitted in support of the request.
2. Agenda for Board Meeting Where Board Voted to Request an Amendment to Add Additional Grades, Expand Enrollment, or Occupy a New or Additional Facility
3. Draft or Approved Minutes for Board Meeting Where Board Voted to Request an Amendment to Add Additional Grades, Expand Enrollment, or Occupy a New or Additional Facility
4. If a facility has been identified, the physical address of the facility and supporting documentation verifying the location, including the Assessor's Parcel Number and a copy of the Assessor's Parcel Map for the proposed facility OR, if a facility has not been identified, a discussion of the desired community of location and the rationale for selecting that community **AND** an assurance that the school will submit such documentation for review and approval prior to acquisition of any facility in compliance with NAC 386.3265
5. If a facility has been identified, a copy of the proposed purchase and sale agreement or a copy of the proposed lease or rental agreement OR a narrative explaining the rationale for the budgeted cost of acquisition of an owned or leased facility **AND** an assurance that the school will submit such documentation for review and approval prior to acquisition of any facility in compliance with NAC 386.3265



6. If a facility has been identified, a copy of the floor plan of the facility, including a notation of the size of the facility which is set forth in square feet OR, if a facility has not been identified, a discussion of the general specifications to be utilized during the facility search, including approximate square footage AND an assurance that the school will submit such documentation for review and approval prior to acquisition of any facility in compliance with NAC 386.3265
7. If a facility has been identified, the name, address, and full contact information of the current owner of the facility and any proposed landlord and a disclosure of any relationship between the current owner or landlord and the school, including but not limited to any relative of a board member or employee within the third degree of consanguinity or affinity and any connection with an educational management organization, foundation, or other entity which does business with or is otherwise affiliated with the school OR a description of the process and resources the school will use to identify a facility AND an assurance that the school will submit such information for review and approval prior to acquisition of any facility in compliance with NAC 386.3265
8. Full Certificate of Occupancy OR a detailed construction project plan and timeline, including a Gantt chart, identifying all facility development activities necessary to obtain a full certificate of occupancy prior to the first day of school AND documentation of the inspection and approval processes and timelines for the state, municipal, or county agencies which will issue the Certificate of Occupancy, including a discussion of whether such agencies issue temporary or conditional approvals and a copy of the standard form documentation that the sponsor can consult in such circumstances to confirm compliance with NAC 386.3265
9. Documentation demonstrating that the proposed facility meets all applicable building codes, codes for the prevention of fire, and codes pertaining to safety, health and sanitation OR a detailed construction project plan and timeline, including a Gantt chart, identifying all facility development activities necessary to obtain all such code approvals prior to the first day of school AND documentation of the inspection and approval processes and timelines for the state, municipal, or county agencies which will conduct all code inspections, including a discussion of whether such agencies issue temporary or conditional approvals and a copy of the standard form documentation that the sponsor can consult in such circumstances to confirm compliance with NAC 386.3265.
10. Documentation demonstrating the governing Body has communicated with the Division of Industrial Relations of the Department of Business and Industry regarding compliance with the federal Occupational Safety and Health Act (OSHA) in compliance with NAC 386.3265

---

## 5. RFA: Transportation

1. See (NAC 388A.330(4))
2. Describe the school's plan for transportation. Be sure to include:
  - o The number of students to receive transportation, including their grades
  - o The hours transportation is to be provided
  - o The physical location(s) proposed as pick-up and drop-off locations
  - o The entity/vendor providing transportation
3. Provide a statement of assurance confirming that Somerset has met all vehicle regulations for the state.
4. Describe how the school and/or transportation vendor will comply with NRS 386.815 regarding operating a school bus for extended periods of time (as necessary).
5. Describe how the school and/or transportation vendor will comply with NRS 386.820, specifically:
  - o The proposed schedule for practicing student evacuation
  - o A description of the bus safety program
6. Confirm that the driver(s) of the school bus will meet the minimum qualifications as described in NRS 386.825. Furthermore, please describe how the school will maintain all required employer documentation per NDE regulatory guidance for school bus operations.
7. Confirm that the school meets the safety standards and requirements as outlined in NRS 386.830 – NRS 386.840 as well as any additional local and federal requirements.

**NO CHANGES from previous amendment.**

## **6.RFA: Other Changes**

### **1. For certain other RFA requests**

- a. See NAC 388A.330
- b. The governing body must submit a written request to the sponsor of the charter school for a determination of whether a proposed amendment is material or nonmaterial if the charter school wishes to amend its written charter or charter contract in a way that is not described in NAC 388A.310 to 388A.335, inclusive.

### **2. For all other RFA requests not otherwise described**

- a. See NAC 388A.335
- b. Complete all applicable sections above, general and specific
- c. **For material amendments** to the written charter or charter contract, as applicable. If the sponsor determines that the proposed amendment is material, the governing body must obtain approval from the sponsor before the amendment becomes effective.
- d. The notice of intent and the RFA must include an explanation of the reasons along with any requested supporting documentation that the charter school is seeking to make this specific requested change.

### **3. Nonmaterial amendments**

- a. NAC 388A.335(2)
- b. For all other RFA requests not otherwise described in NAC 388A.335
- c. If the sponsor determines that the proposed amendment is not material, the governing body is not required to obtain approval from the sponsor before the amendment becomes effective.

**NOT APPLICABLE (N/A).**



**Las Vegas Collegiate Charter School  
Request for Amendment  
Attachments  
January 8, 2021**



## Table of Contents

Attachment	Page #
Attachment 1: Board Request for Amendment	1
Attachment 2: Las Vegas Collegiate Current Budget	6
Attachment 4: Commitment of Funds	10
Attachment 5: Facility Options	16



**Attachment 1**  
**Board Request for Amendment**

# Las Vegas Collegiate Charter School



January 8, 2021

State Charter Governing Board  
State Public Charter School Authority  
2080 E. Flamingo Road Suite 230  
Las Vegas, NV 89119

State Public Charter School Authority,

Re: Request for Amendment to Charter Application

It was with great honor that the founding team for Las Vegas Collegiate submitted our charter application in the summer of 2019. As time has passed, a number of changes have developed. To address said changes, the Las Vegas Collegiate Charter School board met on December 15, 2020 to discuss and vote on necessary changes to meet the needs of parents and families Las Vegas Collegiate will serve. At this time, we are submitting this letter in request of amendments to our original application. We are seeking an amendment to expand the territory in which the facility can sit and the number of scholars we intend to enroll over the next six years. We believe that the requested amendments will allow us to better serve the scholars and families of 89106 without changing the core components on which the charter rests and was approved. The included application addresses each amendment request, detailing any and all changes and updates. Supporting attachments can also be found enclosed.

Thank you for your consideration of the attached request for amendment. We look forward to continuing to serve the scholars and families of The Historic Westside.

Sincerely,

*Jill Schreidl*

Jill Schreidl  
Board Chair  
Las Vegas Collegiate Charter School  
[board@lvccs.org](mailto:board@lvccs.org)  
702.205.3849  
[www.lasvegascollegiate.org](http://www.lasvegascollegiate.org)

**Jill Schreidl**  
*Board Chair*



**Biante' Gainous**  
*Executive Director*

## Las Vegas Collegiate Charter School

**Physical:**

Address for physical location will be made available when State directives, in response to COVID-19, permit.

**Virtual:**

Zoom:

<https://us02web.zoom.us/j/5999302140>

Meeting ID: 599-930-2140

**Contact Info:**

[LVCBoard@lvccs.org](mailto:LVCBoard@lvccs.org)

(702) 762 - 2254

### NOTICE OF PUBLIC MEETING

The Las Vegas Collegiate Charter School Board will conduct a public meeting on December 15, 2020, from 6:30pm – 8:30pm.

This public meeting will be conducted in accordance with Nevada's Open Meeting Law, NRS 241.020, and pursuant to Governor Sisolak's Emergency Directives related to COVID-19. As such the Las Vegas Collegiate Charter School Board meeting will be held virtually, and as a result there will be no physical location.

Members of the public may view the meeting online via the link above.

**Public Comment:** Time for public comment will be provided at the end of the meeting post all agenda items on which action may be taken are heard by the public body and again before the adjournment of the meeting. *See* NRS 241.020(2)(d)(3)(I). A time limit of three (3) minutes, subject to the discretion of the Board Chair, will be imposed on public comments in order to afford all members of the public who wish to comment an opportunity to do so within the timeframe available to the Board. Public comment cannot be restricted based on viewpoint.

The Las Vegas Collegiate Charter School Board reserves the right to take agenda items out of order, items may be removed or delayed from the agenda at any time, and two or more items may be combined for consideration.

The Las Vegas Collegiate Charter School Board is pleased to make reasonable accommodations for any member of the public who has a disability and wishes to attend the meeting. If special arrangements for the meeting are necessary, please notify the Board, in writing, via email at [lvcbboard@lvccs.org](mailto:lvcbboard@lvccs.org)

## AGENDA

- 1) Call to Order and Roll Call.
- 2) Public Comment #1.  
*Public Comment will be taken during this agenda item regarding any item appearing on the agenda. No action may be taken on a matter discussed under this item until the matter is included on an agenda as an item on which action may be taken. See NRS 241.020. A time limit of three (3) minutes, subject to the discretion of the Chair, will be imposed on public comments. The Board Chair may allow additional public comment at her discretion. Public Comment #2 will provide an opportunity for public comment on any matter not on the agenda.*
- 3) Approval of Minutes.
  - a. Approval of November 17, 2020 Board Meeting Action Minutes. The Board will review and possibly approve the board meeting action minutes from the November 17, 2020 School Board meeting.  
Jill Schreidl, *Chair. For Possible Action.*
- 4) Board Giving update. Executive Director Gainous will provide the Board with information and updates regarding the following:
  - a. The number of Board members still needing to give to have a 100% giving Board.
  - b. Update on facility procurement for year one operations.  
Biante Gainous, *Executive Director. Information/Discussion.*
- 5) Charter Amendment
  - a. Approval of a charter amendment stating that the school may lease a temporary facility for year one that will be located within 1 mile of 89106.  
Jill Schreidl, *Chair. For Possible Action*
- 6) Committee Updates
  - a. Each committee will report the work they have completed since the last meeting and their priorities for the next month.  
Jill Schreidl, *Chair. Information/Discussion.*
- 7) Public Comment #2.  
*Public comment will be taken during this agenda item on any matter not on the agenda. See NRS 241.020(d)(3). No action may be taken on a matter raised under this item until the matter is included on an agenda as an item on which action may be taken. A time limit of three (3) minutes, subject to the discretion of the Chair, will be imposed on public comments. The Authority Chair may allow additional public comment at her discretion.*
- 8) Adjournment.

Supporting materials for items listed on the above-referenced agenda are available, at no charge, on the Las Vegas Collegiate Charter School website, <https://www.lasvegascollegiate.org>, under “Our School” – “Meeting Agendas.”

In accordance with Governor Sisolak’s Emergency Directives regarding COVID-19 and Nevada’s Open Meeting Law, this public notice and agenda has been posted on or before December 9, 2020 as follows:

- On the Las Vegas Collegiate Charter School website, <https://www.lasvegascollegiate.org>, and
- On the State of Nevada’s official website, <https://notice.nv.gov/>.





**Attachment 2  
Current Budget**

Las Vegas Collegiate  
Multi-year Projection  
As of Dec FY2021

	Budget					Assumptions
	Year 0 2020-21	Year 1 2021-22	Year 2 2022-23	Year 3 2023-24	Year 4 2024-25	
<b>SUMMARY</b>						
<b>Revenue</b>						
Revenue from Local Sources	1,000	1,000	1,000	1,000	1,000	1,000
State Revenue	-	1,085,643	1,712,634	2,336,406	2,983,433	3,657,630
Federal Revenue	516,892	347,120	256,753	339,004	421,255	503,506
<b>Total Revenue</b>	<b>517,892</b>	<b>1,433,763</b>	<b>1,970,387</b>	<b>2,676,410</b>	<b>3,405,688</b>	<b>4,162,136</b>
<b>Expenses</b>						
Personnel Services-Salaries	161,000	622,300	903,376	1,347,635	1,739,517	2,075,908
Personnel Services-Employee Benefits	14,048	173,235	264,998	401,281	525,349	638,310
Professional and Tech Services	61,789	142,852	184,614	222,481	255,482	284,773
Property Services	14,000	212,400	251,220	297,471	352,600	418,338
Other Services	68,301	57,831	75,571	83,530	97,202	111,472
Supplies	223,800	168,160	211,694	282,055	345,495	408,435
Depreciation Expense	-	4,167	8,333	8,333	8,333	8,333
Debt Service and Miscellaneous	250	25,250	20,250	15,250	15,250	15,250
<b>Total Expenses</b>	<b>543,189</b>	<b>1,406,194</b>	<b>1,920,056</b>	<b>2,658,036</b>	<b>3,339,228</b>	<b>3,960,820</b>
<b>Operating Income</b>	<b>(25,297)</b>	<b>27,569</b>	<b>50,331</b>	<b>18,374</b>	<b>66,460</b>	<b>201,316</b>
<b>Fund Balance</b>						
Beginning Balance (Unaudited)	97,061	71,765	99,334	149,664	168,039	234,498
Audit Adjustment	-	-	-	-	-	-
Beginning Balance (Audited)	97,061	71,765	99,334	149,664	168,039	234,498
Operating Income	(25,297)	27,569	50,331	18,374	66,460	201,316
<b>Ending Fund Balance</b>	<b>71,765</b>	<b>99,334</b>	<b>149,664</b>	<b>168,039</b>	<b>234,498</b>	<b>435,814</b>
<b>Total Revenue Per ADE</b>		8,850	8,109	8,261	8,409	8,564
<b>Total Expenses Per ADE</b>		8,680	7,901	8,204	8,245	8,150
<b>Operating Income Per ADE</b>		170	207	57	164	414
<b>Fund Balance as a % of Expenses</b>	13%	7%	8%	6%	7%	11%

Las Vegas Collegiate  
 Multi-year Projection  
 As of Dec FY2021

	Budget					Assumptions
	Year 0 2020-21	Year 1 2021-22	Year 2 2022-23	Year 3 2023-24	Year 4 2024-25	
<b>Key Assumptions</b>						
<b>Enrollment Breakdown</b>						
K	-	81	81	81	81	81
1	-	81	81	81	81	81
2	-	-	81	81	81	81
3	-	-	-	81	81	81
4	-	-	-	-	81	81
5	-	-	-	-	-	81
<b>Enrollment Summary</b>						
K-3	-	162	243	324	324	324
4-6	-	-	-	-	81	162
<b>Total ADE</b>	-	<b>162</b>	<b>243</b>	<b>324</b>	<b>405</b>	<b>486</b>

**Las Vegas Collegiate**  
**Multi-year Projection**  
**As of Dec FY2021**

		Budget					Assumptions
Year 0	Year 1	Year 2	Year 3	Year 4	Year 5		
2020-21	2021-22	2022-23	2023-24	2024-25	2025-26		
<b>REVENUE</b>							
<b>Revenue from Local Sources</b>							
1900	Other Local Revenue	1,000	1,000	1,000	1,000	1,000	
	Board/other donations - STRIPE, etc (estimated)	1,000	1,000	1,000	1,000	1,000	
	<b>SUBTOTAL - Revenue from Local Sources</b>	<b>1,000</b>	<b>1,000</b>	<b>1,000</b>	<b>1,000</b>	<b>1,000</b>	
<b>State Revenue</b>							
3110	Basic Support - DSA	-	1,085,643	1,661,034	2,259,006	2,880,233	3,525,405
3115	Basic Support - DSA - Sp Ed	-	-	51,600	77,400	103,200	132,225
	<b>SUBTOTAL - State Revenue</b>	<b>-</b>	<b>1,085,643</b>	<b>1,712,634</b>	<b>2,336,406</b>	<b>2,983,433</b>	<b>3,657,630</b>
<b>Federal Revenue</b>							
4500.633	Title I	-	48,600	72,900	97,200	121,500	145,800
4500.639	IDEA	-	22,680	34,020	45,360	56,700	68,040
4500.661	CSP	516,892	172,618	-	-	-	-
	CSP (Total FY20 is \$78,623.34)	405,424	20,100	-	-	-	-
	CSP Round 2 (1/1/21-9/30/21)	111,468	152,518	-	-	-	-
4500.709	Title II	-	7,290	-	-	-	-
4500.715	Title IV - Well-Rounded Education	-	10,000	10,935	14,580	18,225	21,870
4500.802	NSLP	-	85,932	128,898	171,864	214,830	257,796
	<b>SUBTOTAL - Federal Revenue</b>	<b>516,892</b>	<b>347,120</b>	<b>256,753</b>	<b>339,004</b>	<b>421,255</b>	<b>503,506</b>
<b>TOTAL REVENUE</b>		<b>517,892</b>	<b>1,433,763</b>	<b>1,970,387</b>	<b>2,676,410</b>	<b>3,405,688</b>	<b>4,162,136</b>

**Las Vegas Collegiate**  
**Multi-year Projection**  
**As of Dec FY2021**

		Budget					Assumptions	
		Year 0 2020-21	Year 1 2021-22	Year 2 2022-23	Year 3 2023-24	Year 4 2024-25		Year 5 2025-26
<b>EXPENSES</b>								
<b>Personnel Services-Salaries</b>								
101	Salaries-Teachers	-	384,000	538,680	855,454	1,027,063	1,307,604	Y1-6 Teachers \$48k avg, 1 SpEd teacher - see Payroll table
102	Salaries-Instructional Aides	-	13,500	64,520	119,410	175,149	220,252	Y1-enrichment stipends, IA in Y2
104	Salaries-Licensed Administration	98,708	103,000	105,060	172,161	307,604	313,757	Y0 -Ed funded by CSP through March 2021
107	Salaries-Other Classified/Support Staff	62,292	101,000	173,900	178,969	207,629	211,781	Y0 DOO funded by CSP through March 2021, Y1-1 Dir of Ops, 1 FT Bus
161	Salaries-Extra Duties-Teachers	-	20,800	21,216	21,640	22,073	22,515	
	<b>SUBTOTAL - Personnel Services-Salaries</b>	<b>161,000</b>	<b>622,300</b>	<b>903,376</b>	<b>1,347,635</b>	<b>1,738,517</b>	<b>2,075,906</b>	
<b>Personnel Services-Employee Benefits</b>								
210	Employee Benefits - Group Insurance	-	57,330	93,999	145,861	196,037	244,433	Est \$4900/yr avg per EE
220	Employee Benefits - Social Security Contributions	9,982	2,995	2,865	3,667	4,469	4,558	6.2% of Non-PERS salaries
230	Professional Educational Services	-	87,535	130,717	196,495	254,285	305,365	NV PERS est EE ER plan (15.25% ER exp)
240	Employee Benefits - Medicare Payments	2,334	9,023	13,099	19,541	25,223	30,101	1.45% of eligible salaries
260	Employee Benefits - Unemployment Compensation	1,059	13,730	20,441	30,060	38,177	45,410	2.95% of eligible salaries to annual cap (\$32,500/Y1)
270	Employee Benefits - Workers Compensation	673	2,621	3,877	5,657	7,158	8,443	-.59% up to annual cap (\$36,000)
	<b>SUBTOTAL - Personnel Services-Employee Benefits</b>	<b>14,448</b>	<b>173,235</b>	<b>264,998</b>	<b>401,281</b>	<b>525,349</b>	<b>638,310</b>	
<b>Professional and Tech Services</b>								
310	Office/Administrative Services	1,803	1,925	2,968	4,375	5,600	6,650	Banking/payroll, est 175/FTE
	CSP - Banking/payroll fees (est \$175/FTE)	-	720	2,968	4,375	5,600	6,650	
	Bianite Gáncus - add'l March 2020 consulting covered by CSP (paid 8/28/20)	1,083	-	-	-	-	-	
320	Professional Educational Services	-	39,852	59,778	79,704	99,630	119,556	SpEd \$247/student
	CSP-Consultants - curriculum development, planning, etc (661)	18,000	-	-	-	-	-	
	Contracted SpEd services	-	39,852	59,778	79,704	99,630	119,556	
330	Training & Development Services	-	7,290	9,720	13,365	17,010	17,010	Title II funded - total match revenue
	Consultant - culturally responsive teaching (match Title II-709)	-	7,290	9,720	13,365	17,010	17,010	
340	Other Professional Services	17,566	19,000	19,500	20,475	21,499	22,574	
	CSP-2 Legal (661-2)	5,000	5,000	5,000	5,250	5,513	5,788	
	CSP - CPA, zoning, permitting (661)	10,000	-	-	-	-	-	
	CSP - shift to 522 to cover liab insurance (661)	(3,434)	-	-	-	-	-	
	CSP-SFS Food set up (paid \$7500 in FY19-20, budget is \$13,500) (661)	6,000	-	-	-	-	-	
	CSP-2 Audit fee (\$7,500 covered by CSP) (661-2)	-	7,500	-	-	-	-	
	Audit fee (000)	-	6,500	14,500	15,225	15,986	16,786	
340.1	Business Service Fees	24,000	55,000	70,000	75,318	76,684	78,100	\$45,000 covered by CSP, \$20,000 covered by CSP-2(661)
345	Marketing Services	-	8,751	6,350	7,680	8,230	8,790	Recruitment Y2+
	Staff recruitment - see 540, included in CSP	-	2,271	1,490	2,010	1,750	1,500	\$250/FTE in Y2
	Student recruitment - see 540, included in CSP	-	4,860	2,430	2,430	2,430	2,430	\$30/change ADE Y2
	Community engagement	-	1,620	2,430	3,240	4,050	4,860	\$10 ADE Y2
350	Technical Services	-	5,670	8,505	11,340	14,175	17,010	Hosting fees, Tech support - \$35/student
351	Data Processing & Coding Services	-	4,860	7,290	9,720	12,150	14,580	SIS, student data collection, startup and then \$30/student est
	Misc. SIS/Data after CSP	-	4,860	7,290	9,720	12,150	14,580	Y1 included in CSP grant
352	Other Technical Services	420	504	504	504	504	504	
	Zoom monthly fees (2580) (\$14.99/mo)	150	180	180	180	180	180	
	Adobe monthly fees (2580) (\$14.99/mo)	150	180	180	180	180	180	
	Google G-Suite (2580) (\$12/mo)	120	144	144	144	144	144	
	DonationBox - donation platform for website (2580)	-	-	-	-	-	-	
	<b>SUBTOTAL - Professional and Tech Services</b>	<b>61,789</b>	<b>142,852</b>	<b>184,614</b>	<b>222,481</b>	<b>255,482</b>	<b>284,773</b>	
<b>Property Services</b>								
410	Utility Services	-	30,000	34,500	39,675	45,626	52,470	Y1=\$2500/mo, increase 15%/year
422	Janitorial and Custodial Services	-	14,400	15,120	15,876	16,670	17,503	Est \$1,200/mo service, increase 10%/year
441	Rent - Land and Building	14,000	168,000	201,600	241,920	290,304	348,365	
	Rent - estimate start Jun20 (000)	14,000	-	-	-	-	-	
	Ongoing monthly rent (Est \$15k/mo, 20% increase for space/year)	-	168,000	201,600	241,920	290,304	348,365	Est \$14k/mo Y1, 20% increase/year for growth
	<b>SUBTOTAL - Property Services</b>	<b>14,000</b>	<b>212,400</b>	<b>251,220</b>	<b>297,471</b>	<b>352,600</b>	<b>418,338</b>	
<b>Other Services</b>								
522	Liability Insurance	3,434	15,000	16,500	18,150	19,965	21,962	10% increase/year
530	Communications	50,000	8,000	13,221	8,152	8,231	8,311	IT setup Y0/Y1 (CSP), phone \$500/mo
	CSP-Telecommunications - set up of IT infrastructure, phone systems, internet, SIS	25,000	5,000	5,000	5,000	5,000	5,000	IT set up - CSP funded Y0
	CSP-2-Telecommunications - set up of IT infrastructure, phone systems, internet, SI	25,000	-	5,146	-	-	-	
	Phone service - est \$250/mo	-	3,000	3,075	3,152	3,231	3,311	phone service \$500/mo, +2.5%/year
531	Postage	1,000	2,400	3,645	4,860	6,075	7,290	\$15/student
	CSP-2 funded (deliver marketing materials, etc (661-2)	1,000	1,500	-	-	-	-	
	Postage - general (000)	-	900	3,645	4,860	6,075	7,290	
535	Internet services	-	12,000	12,000	12,000	12,000	12,000	\$1000/mo
540	Advertising	8,722	1,000	2,000	2,000	2,000	2,000	CSP funded Y0-1
	CSP- Marketing materials - flyers, posters, clothing, etc. (661)	1,022	-	-	-	-	-	
	Website updates after Y1	200	-	1,000	1,000	1,000	1,000	
	Misc advertising - Indeed, etc (2572)	200	1,000	1,000	1,000	1,000	1,000	
	CSP-2 - other advertising/marketing materials (661-2)	7,500	-	-	-	-	-	
550	Printing and Binding	5,145	1,810	1,215	1,620	2,025	2,430	
	CNYK - marketing materials printing (661)	1,145	810	1,215	1,620	2,025	2,430	
	CSP-2 Printing - support with delivering info to parents (661-2)	4,000	1,000	-	-	-	-	
570	Food Service Management	-	4,050	6,227	8,510	10,904	13,411	\$25/ADE estimated
	School Nutrition Management (est 25/ADE)	-	4,050	6,227	8,510	10,904	13,411	\$25/ADE estimated
591	Intereducational, Intercurrency Purchased Services	-	13,571	20,763	28,238	36,003	44,068	1.25% of DSA
	<b>SUBTOTAL - Other Services</b>	<b>68,301</b>	<b>57,631</b>	<b>75,571</b>	<b>83,530</b>	<b>97,202</b>	<b>111,472</b>	
<b>Supplies</b>								
610	General Supplies	37,200	6,480	9,720	12,960	16,200	19,440	CSP funded Y1, \$25/student after, office supplies, \$15/student, seating for
	CSP-General classroom supplies \$25/student after Y1(661)	18,000	4,050	6,075	8,100	10,125	12,150	CSP funded Y1, \$25/student after
	CSP-Seating for family events, recruitment - 16 mobile stools \$2500 ea (661)	19,200	-	-	-	-	-	16@\$2,500 ea - CSP funded
	General office supplies (000)	-	2,430	3,645	4,860	6,075	7,290	\$15 per student
612	Non-Cap Supplies/Equipment - Non-IT	5,000	5,000	17,390	19,400	21,150	22,650	CSP funded, then faculty furniture \$250/FTE, student furniture \$150/new
	CSP-Foss science kits (661)	39,300	-	-	-	-	-	CSP funded Y0/1
	CSP-Student furniture (661)	-	-	-	-	-	-	
	Faculty furniture after Y1 (\$250/new FTE)	-	-	4,240	6,250	8,000	9,500	
	Student furniture after Y1 (\$150/new student)	-	-	12,150	12,150	12,150	12,150	
	CSP-2 Office furniture for ED/DO (661-2)	5,000	4,000	-	-	-	-	CSP Funded Y0/1
	Toner/ink for printers (000)	-	1,000	1,000	1,000	1,000	1,000	CSP Funded Y0/1
630	Food	-	89,100	133,650	178,200	222,750	267,300	\$3.05/FRL per day (match revenue + small loss) waste
640	Books and supplies	7,000	13,330	15,175	20,425	25,415	30,155	supplies \$200/FTE, Library books \$15/new student, uniforms \$20/student, CSP funded Y0/1
	CSP-Library set up (661)	7,000	-	-	-	-	-	
	CSP-2 Health supplies, PPE (\$25/student funded) (661-2)	-	4,100	-	-	-	-	
	Faculty supplies (\$200/instr, FTE) (000)	-	2,200	3,392	5,000	6,400	7,600	
	Library books after Y1 (2220) \$15/ new student (000)	-	-	1,215	1,215	1,215	1,215	
	Student uniforms (\$20/student) (000)	-	3,240	4,860	6,480	8,100	9,720	
	Gifts and awards - students (\$15/student) (000)	-	2,430	3,645	4,860	6,075	7,290	
	Gifts and awards - teachers and staff (\$50/FTE) (000)	-	550	848	1,250	1,600	1,900	
	Health supplies - Other (\$5/student) (000)	-	810	1,215	1,620	2,025	2,430	
641	Textbooks	-	23,720	14,580	19,440	24,300	29,160	\$150/student
	Handwriting books - 2 per student (000)	-	1,620	2,430	3,240	4,050	4,860	2 per student, \$5 ea ,CSP funded Y1
	Other Textbooks \$50/student	-	8,100	12,150	16,200	20,250	24,300	
	CSP-2 Amplify Science Curriculum (661-2)	-	7,000	-	-	-	-	
	CSP-2 Reading Mastery phonics curriculum (661-2)	-	7,000	-	-	-	-	
651	Supplies - Technology - Software	24,900	9,040	7,860	9,480	11,100	12,720	CSP funded Y0 & Y1, \$20/ADE thereafter
	Chromebook enrollment and config for students (000) - start Y1	-	3,000	3,000	3,000	3,000	3,000	CSP funded Y0 & Y1
	CSP-2 Software and security for staff computers (14*200) (661-2)	-	2,800	-	-	-	-	
	Misc software (000)	-	3,240	4,860	6,480	8,100	9,720	\$20/ADE out years
	CSP-Rediker Software - Student data collection systems to support data driven instr	5,400	-	-	-	-	-	
	CSP-SIS System (Infinite Campus) - set up and install (661)	19,500	-	-	-	-	-	
652	Supplies/Equipment - Information Technology Related	69,400	19,060	3,600	10,000	10,000	10,000	
	CSP-Student chromebooks - 144@\$300 ea (661)	43,200	-	-	-	-	-	
	CSP-Copy Machines-2 (661)	15,000	-	-	-	-	-	
	CSP-2 28 chromebooks for distance learning 1:1 (661-2)	-	8,400	-	-	-	-	
	CSP-2 9-doc cameras @\$200 ea (661-2)	-	1,800	-	-	-	-	
	CSP-2 1 chromebook charging cart (661-2)	-	400	-	-	-	-	
	CSP-2 81 mobile hotspots at \$30 ea for 2 months (661-2)	-	4,860	-	-	-	-	
	CSP-2 14 Macs - Staff computers - 14@\$800, partial fund (661-2)	11,200	-	-	-	-	-	
	Student chromebooks - Y2 (add'l 12) - 2:1 est Y2	-	-	3,600	-	-	-	
	6 projectors @ \$300 ea (000)	-	1,800	-	-	-	-	
	6 white boards @ \$300/ea (000)	-	1,800	-	-	-	-	
	Misc - Y3+ (000)	-	-	-	10,000	10,000	10,000	Est \$10000/year
653	Web-based and similar programs	36,000	2,430	9,720	12,150	14,580	17,010	CSP funded Y0 & Y1, thereafter iReady \$30/new student, NWEA \$10/ADE,
	CSP-iReady/Lexia at \$8,000 ea (661)	16,000	-	-	-	-	-	CSP funded Y0 & Y1
	CSP-STEP literacy assessment (661)	20,000	-	-	-	-	-	CSP funded Y0 & Y1
	iReady per new student \$30/student after Y1	-	-	2,430	2,430	2,430	2,430	
	CSP-2 NWEA Map (web-based assessment/testing) 162 @\$15/student (661-2)	-	2,430	2,430	3,240	4,050	4,860	

**Las Vegas Collegiate**  
**Multi-year Projection**  
**As of Dec FY2021**

		Budget					Assumptions
Year 0	Year 1	Year 2	Year 3	Year 4	Year 5		
2020-21	2021-22	2022-23	2023-24	2024-25	2025-26		
	STEP Literacy est \$20/student after Y1	-	4,860	6,480	8,100	9,720	
	<b>SUBTOTAL - Supplies</b>	<b>223,800</b>	<b>168,160</b>	<b>211,694</b>	<b>282,055</b>	<b>345,495</b>	<b>408,435</b>
<b>Depreciation Expense</b>							
790	Depreciation	-	4,167	8,333	8,333	8,333	8,333 Buses (1 Y1, 2 Y2)
	<b>SUBTOTAL - Depreciation Expense</b>	<b>-</b>	<b>4,167</b>	<b>8,333</b>	<b>8,333</b>	<b>8,333</b>	<b>8,333</b>
<b>Debt Service and Miscellaneous</b>							
810	Dues and Fees	250	250	250	250	250	SOS filing fees
	SOS Annual filing	250	250	250	250	250	
832	Interest	-	25,000	20,000	15,000	15,000	Assumes cash flow loans needed
	<b>SUBTOTAL - Debt Service and Miscellaneous</b>	<b>250</b>	<b>25,250</b>	<b>20,250</b>	<b>15,250</b>	<b>15,250</b>	<b>15,250</b>
<b>Other Items - Expense</b>							
	<b>SUBTOTAL - Other Items - Expense</b>	<b>-</b>	<b>-</b>	<b>-</b>	<b>-</b>	<b>-</b>	<b>-</b>
<b>TOTAL EXPENSES</b>		<b>543,188</b>	<b>1,406,194</b>	<b>1,920,056</b>	<b>2,658,036</b>	<b>3,339,228</b>	<b>3,960,820</b>

**Las Vegas Collegiate**  
**Payroll Report**  
**As of Dec FY2021**

<b>Payroll</b>			
<b>Head Count</b>	<b>Last Name</b>	<b>First Name</b>	<b>Position Name</b>
1	GAINOUS, BIANTE	000-General (661-CSF	EXECUTIVE DIRECTOR
6	TBD FY21-22	000-General	TEACHER
1	TBD FY21-22	000-General	SCIENCE TEACHER
1	TBD FY21-22	639-SpEd IDEA	SPED TEACHER (IDEA 639)
1	TBD FY21-22	802-NSLP (50%)	BUS DRIVERS/SUPPORT NSLP (802)
1	BELLAMY, MARIAH	000-General (661-CSF	DEAN OF OPERATIONS
1	TBD FY22-23	000-General	OFFICE ADMINISTRATOR
3	TBD FY22-23	000-General	TEACHER
1	TBD FY22-23	633-Title I	INSTRUCTIONAL AIDES/STUDENT SUPPORT
1	TBD FY22-23	802-NSLP (50%)	BUS DRIVERS/SUPPORT NSLP (802)
4	TBD FY23-24	000-General	TEACHER
1	TBD FY23-24	633-Title I	INSTRUCTIONAL AIDES/STUDENT SUPPORT
1	TBD FY23-24	205-SpEd State	SPED TEACHER (SpEd 205)
1	TBD FY23-24	000-General	SCIENCE TEACHER
1	TBD FY23-24	205-SpEd State	DEAN OF SCHOLAR SUPPORTS (SpEd 205)
3	TBD FY24-25	000-General	TEACHER
1	TBD FY24-25	633-Title I	INSTRUCTIONAL AIDES/STUDENT SUPPORT
1	TBD FY24-25	000-General	DEAN OF CURRICULUM AND INSTR
1	TBD FY24-25	000-General	DEAN OF SCHOOL CULTURE
1	TBD FY24-25	000-General	BUS DRIVERS/SUPPORT
1	GAINOUS, BIANTE	661-CSP	ED CSP FUNDED (4/1/20-3/31/21) (661)
1	BELLAMY, MARIAH	661-CSP	OPS - CSP FUNDED 4/1/20-3/31/21 (661)
1	GAINOUS, BIANTE	661-CSP	CSP-2 funded (4/1/21-7/31/21)
1	BELLAMY, MARIAH	661-CSP	CSP-2 funded (4/1/21-7/31/21)
3	TBD FY25-26	000-General	TEACHERS
1	TBD FY25-26	205-SpEd State	SPED TEACHER (SpEd 205)
1	TBD FY25-26	000-General	SCIENCE TEACHER
1	TBD FY25-26	633-Title I	INSTRUCTIONAL AIDES/STUDENT SUPPORT

**Payroll Total**

**Extra Pay**

**Description**

Enrichment - Financial Literacy & Entrepreneurship (2 days/wk, 5 hrs, day, 36 wks est \$15/hr)  
 Enrichment - PE (1day/wk, 5 hrs, day, 36 wks est \$15/hr)  
 Enrichment - Art (1day/wk, 5 hrs, day, 36 wks est \$15/hr)  
 Enrichment - Music (1day/wk, 5 hrs, day, 36 wks est \$15/hr)  
 CSP-2 Stipend Jul21 (8 Teachers)  
 CSP-2 Stipend Jul21 (4 support)

**Extra Pay Total**

**Personnel Summary**

101 Salaries-Teachers  
 102 Salaries-Instructional Aides  
 104 Salaries-Licensed Administration  
 107 Salaries-Other Classified/Support Staff  
 161 Salaries-Extra Duties-Teachers

**Total**

**Total FTE Count**

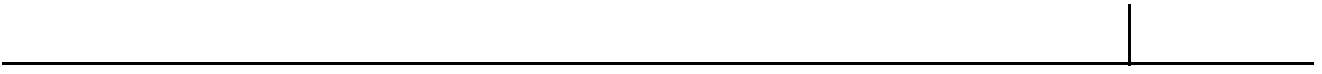
**Teacher FTE Count**

Total Headcount  
Teacher Headcount

---







Year 1 2021	Year 2 2021-22		Year 3 2022-23		Year 4 2023-24	
	Total Paid	FTE Count	Total Paid	FTE Count	Total Paid	FTE Count
-	94,417	0.92	105,060	1.00	107,161	1.00
-	288,000	6.00	293,760	6.00	299,635	6.00
-	48,000	1.00	48,960	1.00	49,939	1.00
-	48,000	1.00	48,960	1.00	49,939	1.00
-	36,000	1.00	36,720	1.00	37,454	1.00
-	59,583	0.92	66,300	1.00	67,626	1.00
-	-	-	35,000	1.00	35,700	1.00
-	-	-	147,000	3.00	149,940	3.00
-	-	-	39,520	1.00	40,310	1.00
-	-	-	35,880	0.96	38,189	1.00
-	-	-	-	-	204,000	4.00
-	-	-	-	-	41,600	1.00
-	-	-	-	-	51,000	1.00
-	-	-	-	-	51,000	1.00
-	-	-	-	-	65,000	1.00
-	-	-	-	-	-	-
-	-	-	-	-	-	-
-	-	-	-	-	-	-
-	-	-	-	-	-	-
-	-	-	-	-	-	-
0.71	-	-	-	-	-	-
0.71	-	-	-	-	-	-
0.25	8,583	0.08	-	-	-	-
0.25	5,417	0.08	-	-	-	-
-	-	-	-	-	-	-
-	-	-	-	-	-	-
-	-	-	-	-	-	-
-	-	-	-	-	-	-
-	-	-	-	-	-	-
<b>1.92</b>	<b>588,000</b>	<b>11.00</b>	<b>857,160</b>	<b>16.96</b>	<b>1,288,494</b>	<b>25.00</b>

	5,400		10,000		15,000	
	2,700		5,000		7,500	
	2,700		5,000		7,500	
	2,700		5,000		7,500	
	16,000		16,320		16,646	
	4,800		4,896		4,994	
	<b>34,300</b>		<b>46,216</b>		<b>59,140</b>	

-	384,000	8.00	538,680	11.00	855,454	17.00
-	13,500	-	64,520	1.00	119,410	2.00
0.96	103,000	1.00	105,060	1.00	172,161	2.00
0.96	101,000	2.00	173,900	3.96	178,969	4.00
-	20,800	-	21,216	-	21,640	-
<b>1.92</b>	<b>622,300</b>	<b>11.00</b>	<b>903,376</b>	<b>16.96</b>	<b>1,347,635</b>	<b>25.00</b>

1.92		11.00		16.96		25.00
-		8.00		11.00		17.00

4.00  
-

13.00  
8.00

17.00  
11.00

25.00  
17.00

---

Year 5 2024-25		Year 6 2025-26	
Total Paid	FTE Count	Total Paid	FTE Count
109,304	1.00	111,491	1.00
305,628	6.00	311,740	6.00
50,938	1.00	51,957	1.00
50,938	1.00	51,957	1.00
38,203	1.00	38,968	1.00
68,979	1.00	70,358	1.00
36,414	1.00	37,142	1.00
152,939	3.00	155,998	3.00
41,117	1.00	41,939	1.00
38,953	1.00	39,732	1.00
208,080	4.00	212,242	4.00
42,432	1.00	43,281	1.00
52,020	1.00	53,060	1.00
52,020	1.00	53,060	1.00
66,300	1.00	67,626	1.00
154,500	3.00	157,590	3.00
41,600	1.00	42,432	1.00
66,000	1.00	67,320	1.00
66,000	1.00	67,320	1.00
25,080	1.00	25,582	1.00
-	-	-	-
-	-	-	-
-	-	-	-
-	-	-	-
-	-	156,000	3.00
-	-	52,000	1.00
-	-	52,000	1.00
-	-	41,600	1.00
<b>1,667,444</b>	<b>32.00</b>	<b>2,002,393</b>	<b>38.00</b>

20,000	20,400
10,000	10,200
10,000	10,200
10,000	10,200
16,979	17,319
5,094	5,196
<b>72,073</b>	<b>73,515</b>

1,027,063	20.00	1,307,604	25.00
175,149	3.00	220,252	4.00
307,604	4.00	313,757	4.00
207,629	5.00	211,781	5.00
22,073	-	22,515	-
<b>1,739,517</b>	<b>32.00</b>	<b>2,075,908</b>	<b>38.00</b>

32.00	38.00
20.00	25.00

32.00  
20.00

38.00  
25.00

---

**Las Vegas Collegiate**  
**2020-21**  
**As of Dec FY2021**

<b>Project</b>	<b>Projected Completion Date</b>	<b>Useful Life (months)</b>	<b>Year 1 2020-21</b>
Bus #1 (CSP-2 funded) (661-2)	7/1/21	72	25,000
Bus #2 - Y2	7/1/22	72	-
<b>Total</b>			25,000

Prior Year Fixed Assets Depreciation
<b>Total Depreciation Expense</b>

Capital Outlay					Depreciated		
Year 2 2021-22	Year 3 2022-23	Year 4 2023-24	Year 5 2024-25	Year 6 2025-26	Year 1 2020-21	Year 2 2021-22	Year 3 2022-23
25,000					-	4,167	4,167
					-	-	4,167
					-	-	-
25,000	-	-	-	-	-	4,167	8,333
					-	4,167	8,333



<b>on Impact</b>		
<b>Year 4</b>	<b>Year 5</b>	<b>Year 6</b>
<b>2023-24</b>	<b>2024-25</b>	<b>2025-26</b>
4,167	4,167	4,167
4,167	4,167	4,167
-	-	-
<b>8,333</b>	<b>8,333</b>	<b>8,333</b>
<b>8,333</b>	<b>8,333</b>	<b>8,333</b>

**Las Vegas Collegiate**  
**Monthly Cash Forecast**  
**As of Dec FY2021**

							Year 2021
	Jul Forecast	Aug Forecast	Sep Forecast	Oct Forecast	Nov Forecast	Dec Forecast	Jan Forecast
<b>Beginning Cash</b>	<b>42,537</b>	<b>63,021</b>	<b>162,286</b>	<b>65,431</b>	<b>34,972</b>	<b>256,990</b>	<b>159,249</b>
<b>REVENUE</b>							
Revenue from Local Sources	-	-	250	-	-	250	-
State Revenue	-	251,819	-	-	340,696	-	-
Federal Revenue	(9,643)	-	11,403	-	71,643	13,936	14,938
Other Financing Sources	-	-	-	-	-	-	-
Other Items	-	-	-	-	-	-	-
<b>TOTAL REVENUE</b>	<b>(9,643)</b>	<b>251,819</b>	<b>11,653</b>	<b>-</b>	<b>412,339</b>	<b>14,186</b>	<b>14,938</b>
<b>EXPENSES</b>							
Personnel Services-Salaries	52,300	50,227	50,227	50,227	50,227	50,227	50,227
Personnel Services-Employee Benefits	19,284	14,175	14,175	14,175	14,175	14,175	14,175
Professional and Tech Services	6,041	6,674	7,600	9,500	12,209	12,209	13,019
Property Services	28,000	17,700	17,700	17,700	17,700	17,700	17,700
Other Services	1,974	7,233	3,153	4,558	6,951	3,558	3,558
Supplies	14,713	16,983	13,548	7,195	11,954	11,954	11,954
Depreciation Expense	347	347	347	347	347	347	347
Debt Service and Miscellaneous	2,104	2,104	2,104	2,104	2,104	2,104	2,104
Other Items - Expense	-	-	-	-	-	-	-
<b>TOTAL EXPENSES</b>	<b>124,764</b>	<b>115,445</b>	<b>108,855</b>	<b>105,806</b>	<b>115,667</b>	<b>112,275</b>	<b>113,085</b>
<b>Operating Cash Inflow (Outflow)</b>	<b>(134,407)</b>	<b>136,374</b>	<b>(97,202)</b>	<b>(105,806)</b>	<b>296,671</b>	<b>(98,089)</b>	<b>(98,146)</b>
Accounts Receivable - Current Year	-	-	-	-	-	-	-
Revenues - Prior Year Accruals	55,734	55,734	-	-	-	-	-
Other Current Assets	17,000	-	-	-	-	-	-
Fixed Assets	347	(24,653)	347	347	347	347	347
Accounts Payable - Current Year	-	-	-	-	-	-	-
Expenses - Prior Year Accruals	6,810	6,810	-	-	-	-	-
Loans Payable (Current)	75,000	(75,000)	-	75,000	(75,000)	-	-
Other Current Liabilities	-	-	-	-	-	-	-
<b>Ending Cash</b>	<b>63,021</b>	<b>162,286</b>	<b>65,431</b>	<b>34,972</b>	<b>256,990</b>	<b>159,249</b>	<b>61,450</b>

**Las Vegas Collegiate**  
**Monthly Cash Forecast**  
**As of Dec FY2021**

	Year 1						Forecast	Remaining Balance
	1-22	Feb Forecast	Mar Forecast	Apr Forecast	May Forecast	Jun Forecast		
<b>Beginning Cash</b>		<b>61,450</b>	<b>230,968</b>	<b>135,423</b>	<b>48,395</b>	<b>228,106</b>		
<b>REVENUE</b>								
Revenue from Local Sources		-	250	-	-	250	1,000	-
State Revenue		246,564	-	-	246,564	-	1,085,643	-
Federal Revenue		39,085	16,942	25,710	49,278	37,274	347,120	76,554
Other Financing Sources		-	-	-	-	-	-	-
Other Items		-	-	-	-	-	-	-
<b>TOTAL REVENUE</b>		<b>285,649</b>	<b>17,192</b>	<b>25,710</b>	<b>295,842</b>	<b>37,524</b>	<b>1,433,763</b>	<b>76,554</b>
<b>EXPENSES</b>								
Personnel Services-Salaries		50,227	50,227	50,227	50,227	50,227	622,300	17,500
Personnel Services-Employee Benefits		14,175	14,175	14,175	14,175	9,398	173,235	2,800
Professional and Tech Services		13,019	13,019	13,019	13,019	13,019	142,852	10,503
Property Services		17,700	17,700	17,700	17,700	3,700	212,400	3,700
Other Services		6,951	3,558	3,558	6,951	3,558	57,831	2,272
Supplies		11,954	11,954	11,954	11,954	11,954	168,160	20,090
Depreciation Expense		347	347	347	347	347	4,167	-
Debt Service and Miscellaneous		2,104	2,104	2,104	2,104	2,104	25,250	0
Other Items - Expense		-	-	-	-	-	-	-
<b>TOTAL EXPENSES</b>		<b>116,477</b>	<b>113,085</b>	<b>113,085</b>	<b>116,477</b>	<b>94,307</b>	<b>1,406,194</b>	<b>56,865</b>
<b>Operating Cash Inflow (Outflow)</b>		<b>169,171</b>	<b>(95,893)</b>	<b>(87,375)</b>	<b>179,364</b>	<b>(56,783)</b>	<b>27,569</b>	<b>19,689</b>
Accounts Receivable - Current Year		-	-	-	-	-	-	-
Revenues - Prior Year Accruals		-	-	-	-	-	-	-
Other Current Assets		-	-	-	-	-	-	-
Fixed Assets		347	347	347	347	347	-	-
Accounts Payable - Current Year		-	-	-	-	-	-	-
Expenses - Prior Year Accruals		-	-	-	-	-	-	-
Loans Payable (Current)		-	-	-	-	-	-	-
Other Current Liabilities		-	-	-	-	-	-	-
<b>Ending Cash</b>		<b>230,968</b>	<b>135,423</b>	<b>48,395</b>	<b>228,106</b>	<b>171,671</b>		



## **Attachment 3 Commitment of Funds**

\*\*Please note the third funding source listed is an additional CSP award that LVC was recently awarded. Per the email from the grants manager, LVC has been awarded but does not expect to receive the final assurances letter until the week of January 17, 2021.

Las Vegas Collegiate was awarded \$263,985.83.



**YEAR 0 GRANT  
TERMS & CONDITIONS**

**Grant Amount:** \$100,000  
**Grant Recipient:** Las Vegas Collegiate Charter School ("Grantee")  
**Grant Term:** February 1, 2020 - June 30, 2021

**Your Tax-Exempt Status:**

Our research informs us that the IRS has classified the Grantee as a public charity under Internal Revenue Code Section 509(a)(1), (2) or (3) (an "Exempt Public Charity").

**Grant Purpose and Expenditure of Funds:**

The Grantee is to apply the grant proceeds exclusively toward the expenses as outlined in the proposal submitted and received February 1, 2020 including the submitted amendments. All application materials shall be included as appendices to this Grant Terms & Conditions.

**Disbursement**

The Grantee has been awarded the full \$100,000.00 grant related to the Year 0 Grant proposal. The full amount will be released immediately upon signature of the Grant Terms & Conditions, and the most recent version of the FY20 and FY21 budgets.

**Reporting**

The Grantee is expected to submit reports to Opportunity 180 following the schedule outlined below:

Reporting Deadlines

- May 15, 2020: Interim Expenditure Report
  - Complete an interim expenditure report that describes all expenses to date related to the grant including dates, descriptions and quantities of expenses and attach any supporting materials.
- September 30, 2020: Interim Expenditure Report
  - Complete an interim expenditure report that describes all expenses to date related to the grant including dates, descriptions and quantities of expenses and attach any supporting materials.
- June 30, 2021: Final Expenditure Report



- Complete a final expenditure report that describes all expenses related to the grant. Final expenditure report needs to include dates, description, quantity, amount and attach any supporting materials.

#### Ongoing School Data Requirement

All grants issued by Opportunity 180 ask for an ongoing commitment from recipients to provide academic quality data on an ongoing basis over three years. Below are the dates related to this reporting requirement.

- January 15, 2021: Interim School Quality Report
  - Grantee agrees to provide Opportunity 180 with student-level and school-level disaggregated data related to the quality of mid-year academic outcomes
- June 30, 2021: School Quality Report
  - Grantee agrees to provide Opportunity 180 with student-level and school-level disaggregated data related to the quality of academic outcomes
- June 30, 2022: School Quality Report
  - Grantee agrees to provide Opportunity 180 with student-level and school-level disaggregated data related to the quality of academic outcomes
- June 30, 2023: School Quality Report
  - Grantee agrees to provide Opportunity 180 with student-level and school-level disaggregated data related to the quality of academic outcomes

The above reports shall be submitted in accordance with their scheduled date. All items must be submitted by end of the grant term. Opportunity 180 reserves the right to request additional reports to be produced by the Grantee within a reasonable timeline, as set by Opportunity 180.

In addition to the reporting requirements, the Grantee is expected to keep regular communications with Opportunity 180 to ensure adequate progress and accountability throughout the duration of the fellowship.

#### **Return of Grant Funds:**

The Grantee agrees to return any funds not expended for the purposes described above to Opportunity 180 at 11035 Lavender Hill Dr, #160-180 Las Vegas, NV 89135. The rules governing 501(c)(3) organization also require you to return the enclosed grant if your organization is no longer recognized by the Internal Revenue Service as an Exempt Public Charity or would lose its status as a public charity as a result of this grant.

The term “you” and the like means the recipient of the Grant.



Grantee:

Accepted By: 

Print Name: Biante' Gainous

Title: Executive Director

Date: Feb 11, 2020



**NOTIFICATION OF STATE GRANT OR FEDERAL SUBGRANT AWARD**

<p><b>1. Name and Address of Recipient/Subrecipient:</b> Las Vegas Collegiate Academy 2657 Windmill Pkwy, STE 210 Henderson, NV 89074</p>	<p><b>2. Project Number: 20-661-109000</b></p> <p><b>3. Amount of Subgrant Award: \$ 504,147.00</b></p> <p><b>4. Subgrant Award Period of Performance:</b> 02/01/2020 – 09/30/2020</p>
<p><b>5. Unique Entity Identifier (DUNS): 117325864</b></p>	<p><b>6. Program:</b> State _____ Federal <u> X </u></p>
<p><b>7. Vendor Number: In Progress GL: 8780</b></p>	<p><b>8. Grant:</b> (X) New -OR- ( ) Revised</p>
<p><b>9. Nevada Department of Education</b> Office of Student and School Support</p> <p>Education Program Professional: Maria Sauter Phone: (775)687-9248, Email: <a href="mailto:msauter@doe.nv.gov">msauter@doe.nv.gov</a></p> <p>Grants and Project Analyst: Tom Fletcher Phone: (775)687-9195, Email: <a href="mailto:tfletcher@doe.nv.gov">tfletcher@doe.nv.gov</a></p>	<p><b>10. Federal Awarding Agency:</b> U.S. Department of Education</p> <p><b>11. Federal Grant Award Date to NDE by Federal Agency:</b> 11/07/2016</p> <p><b>12. Federal Award (GAN) Project Title:</b> Nevada Charter School Program Grant</p> <p><b>13. Federal Award Identification Number (FAIN):</b> U282A150016-16</p> <p><b>14. CFDA Number: 84.282A</b></p> <p><b>15. Is this Sub award granted for research and development? ( ) Yes -OR- ( X ) No</b></p>
<p><b>16. Project Title: Charter School Program</b></p>	
<p><b>17. Terms and Conditions:</b></p> <p>a. The purpose of this program is to assist in opening and preparing for the operation of a new charter school or expand or replicate a high-quality charter school.</p> <p>b. Assistance in the amount cited on line 3 (above) is granted in support of the <i>Charter Schools Program</i> competitive application/or formula/or entitlement grant award. The funds awarded under the grant must be expended by <i>September 30, 2020</i>.</p> <p>c. The recipient/subrecipient agrees to comply with all requirements incorporated into this sub award; Attachment A – Budget and Narrative Attachment B – General Federal Assurances</p> <p>d. The recipient/subrecipient agrees to submit all information and reports as NDE may deem necessary for effective administration of <i>Charter Schools Program</i> under the grant authority cited herein.</p> <p>e. The recipient/subrecipient agrees to submit all requests for budget amendments in writing for approval prior to the expenditure of funds.</p> <p>f. The recipient/subrecipient agrees to submit the Final Financial Report (FFR) to the NDE by <i>for federal grant November 15, 2020 - 45 days from ending date</i>.</p> <p>g. The recipient/subrecipient agrees Request For Funds (RFF) will be submitted monthly by the 15<sup>th</sup> of the month. Funds not committed for expenditure by <i>September 30, 2020</i>, will revert to back to NDE after all payments of funds committed have been made.</p> <p>h. The recipient/subrecipient agrees to fully cooperate with NDE sponsored projects including, but not limited to, utilization management reviews, program compliance monitoring, reporting requirements, and evaluation studies as required.</p> <p>i. For federal and state funded subgrant awards, as applicable; the recipient/subrecipient agrees that a Federal awarding agency, the Inspectors General, the Comptroller General of the United States, the State or any of their authorized representatives, must have the right of access to any documents, papers, or other records which are pertinent to the Subgrant award, in order to make audits, examinations, excerpts, and transcripts. The right also</p>	



includes timely and reasonable access to the recipient/subrecipient's personnel for the purpose of interview and discussion related to such documents.

**18. Signatures**

Program Representative

Name

*Maria Sauter*

Date

*3/13/20*

Maria Sauter, Education Program Supervisor

Fiscal Agent

Name

*Heidi Haartz*

Date

*3/22/20*

Heidi Haartz, Deputy Superintendent – Business Support Services

**19. Accounting Data**

State Legislative Bill or

NDE Federal Common Accounting

Number (CAN)/ Budget and Category

Amount of  
This Award Action

Amount  
Previously  
Awarded

Total  
Awarded  
to Date

CAN:

Budget: 2672

Category: 10

**\$504,147.00**

\$

**\$504,147.00**

CAN:

Budget:

Category:

\$

\$

\$

**From:** Maria Sauter msauter@doe.nv.gov   
**Subject:** Charter Schools program award  
**Date:** December 28, 2020 at 7:14 PM  
**To:** bgainous@lvccs.org

---

Good morning-

Congratulations on being awarded a grant through the Charter School Program for 2020-21 school year. Attached are the review notes, final score and approved budget. There may be slight adjustments in object codes, Instruction vs Support Services that need to be finalized by our grant unit, but I wanted to get the award amounts to you as soon as I could.

The next steps will be to amend the budget using the approved amounts and narrative. These will be due by January 13, 2021. Please let me know if you have any questions.

Happy New Year!

**Maria Sauter**  
*Education Program Supervisor*  
*Title IVA Director*

**To help mitigate the spread of COVID-19, I am currently telecommuting between the hours of 7:30 am – 4:00 pm (PST) Monday – Friday. Please note that I have full access to email and voice mail and will respond to you as soon as possible. For the latest updates on COVID-19 in Nevada please visit [nvhealthresponse.nv.gov](https://nvhealthresponse.nv.gov).**

*Office of Student and School Supports*  
*Nevada Department of Education*  
700 E Fifth Street \* Carson City, NV 89701 \* Phone : 775-687-9248 \* Fax: 775-687-9250



CONFIDENTIALITY - This message and accompanying documents are covered by the electronic Communications Privacy Act, 18 U.S.C. §§ 2510-2521, may be covered by the Family Educational Rights and Privacy Act (FERPA) 20 U.S.C. § 122g; 34 CFR Part 99 and may contain confidential information or Protected Information intended for the specified individual(s) only. If you are not the intended recipient or an agent responsible for delivering it to the intended recipient, you are hereby notified that you have received this document in error and that any review, dissemination, copying, or the taking of any action based on the contents of this information is strictly prohibited. Violations may result in administrative, civil, or criminal penalties. If you have received this communication in error, please notify sender immediately by e-mail, and delete the message. The Nevada Department of Education will not accept any liability in respect of such communication that violates our e-mail policy.



**Attachment 4  
Facility Options**

# Las Vegas Collegiate Charter School – Facility Search



Las Vegas Collegiate is currently requesting to expand our territory for facility locations by roughly 1 mile. Through partnership with a facility developer and broker, Las Vegas Collegiate has expended all current options within our boundary, resulting in no viable options. Please see the attached lists and status of those options below.

In order to meet the needs of scholars and give our community a high-quality school on a viable campus, we are seeking to expand our territory by 1 mile in any direction of the 89106 borders. Las Vegas Collegiate is still committed to serving the 89106 community and will provide transportation to ensure we enroll children from our targeting community. Our budget is inclusive of required, accompanying expenses.

The Las Vegas Collegiate team understands that acquisition of any facility requires the approval of SPCSA staff and Board and will operate in accordance to NRS 386.3265.

## FACILITY OPTION 1

**ADDRESS: 2705 W Lake Mead BLVD, N Las Vegas 89032.**

This location is a former dollar store. It is a stand-alone building situated within a shopping center. Please see additional pages below for details. As we recognize this option can only support Las Vegas Collegiate for a maximum of two years, our facility developer is working diligently to find permanent options.

**SQFT:** 9,900

**COSTS:** \$12.00/SF/YR – (Currently in negotiations).

**DISTANCE FROM 89106:** Less than 250 feet.

**CURRENT STATUS:** In partnership with a facility developer, Las Vegas Collegiate is currently discussing monthly costs for the location with the owner. To ensure effective due diligence, our team is looking into permitting and zoning requirements in an effort to complete a list of requirements to get the space to code to accept scholars should this be a viable option. Conversations are still preliminary as we await the status of our request.

## FACILITY OPTION 2

**ADDRESS: 310 S. 9<sup>th</sup> St, Las Vegas, NV 89101**

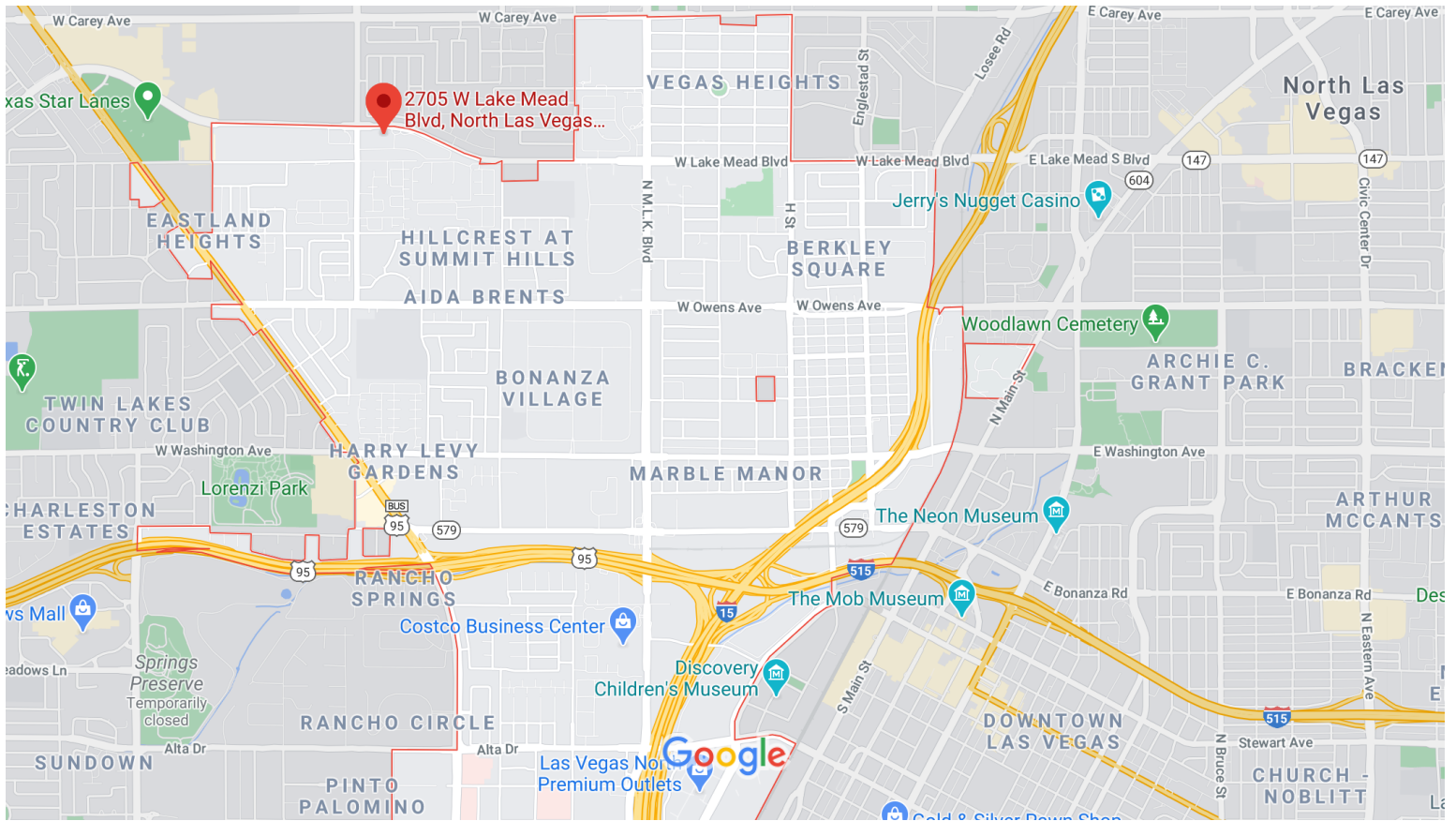
This location is currently operating as a school that will be closing this coming summer.

**SQFT:** 22,000

**COSTS:** Currently in negotiations

**DISTANCE FROM 89106:** 1.4 miles

**CURRENT STATUS:** Las Vegas Collegiate is currently in discussions with the current owner of this facility to determine cost and logistics feasibility. Conversations are preliminary as we await the status of our request.



Map data ©2021 2000 ft

Please note that 89106 and 89032 are joined at W. Lake Mead BLVD with one side of the street being 89106 and other side being 89032. The distance is less than 250 feet from the 89106 boarder to 2705 W. Lake Mead Ave.

**2705 W LAKE MEAD BLVD , NORTH LAS VEGAS, NV 89032**

**PROPERTY FACTS:**

Rental Rate \$12.00 /SF/YR Gross Leasable Area 9,900 SF  
Min. Divisible 5,000 SF Year Built 2009  
Property Type Retail

**ABOUT THE PROPERTY**

Former DOLLAR TREE with total build out street retail and great exposer car count per day 25k  
Bus Line

First Floor: 5,000-9,900 SF

Ceiling: 12' - 16'

Term: 5-10 Yrs

Rate: \$12.00 /SF/YR- Lease rate does not include utilities, property expenses or building services

Type: Triple Net (NNN)

Space Use: Retail

Condition: Fully Built Out as Standard Retail Space

Availability: Now

Space is in Excellent Condition

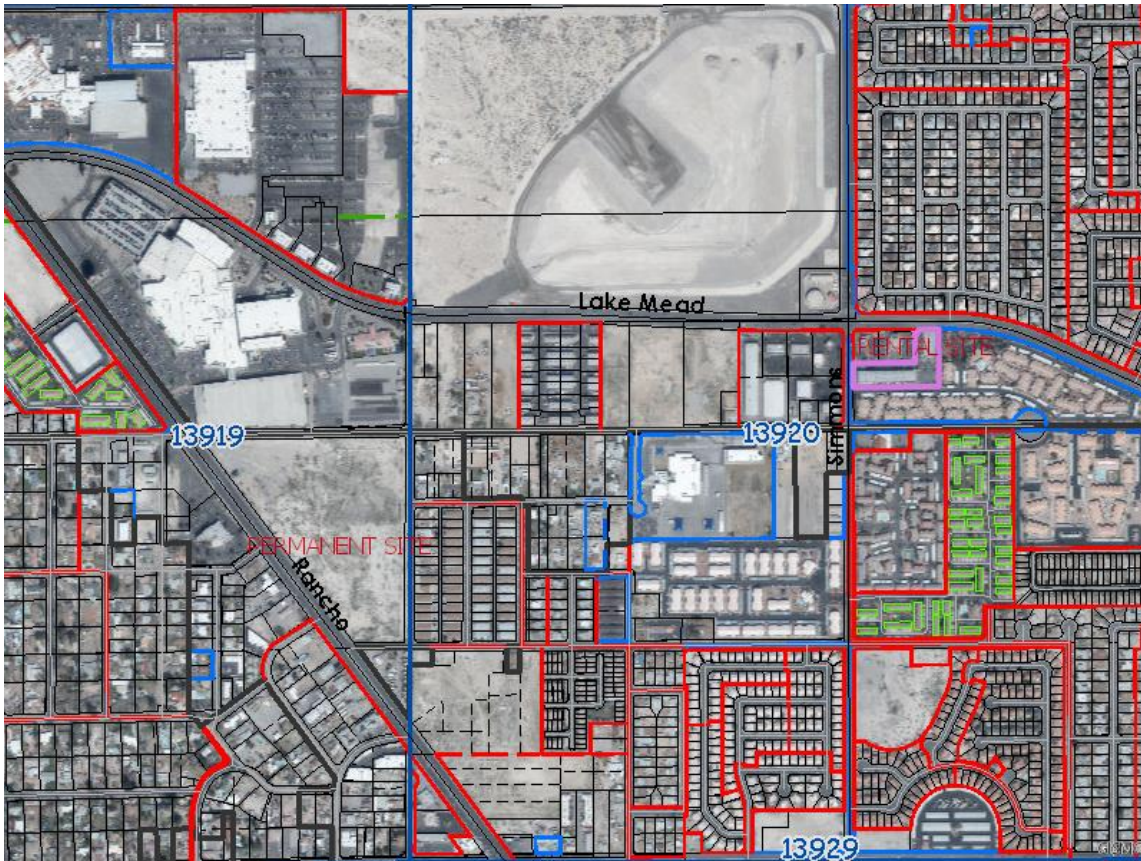
1 Loading Dock

Anchor Space

Central Air and Heating

High Ceilings

Drop Ceilings





Eastern, in-line building  
approximately 9,900 sf





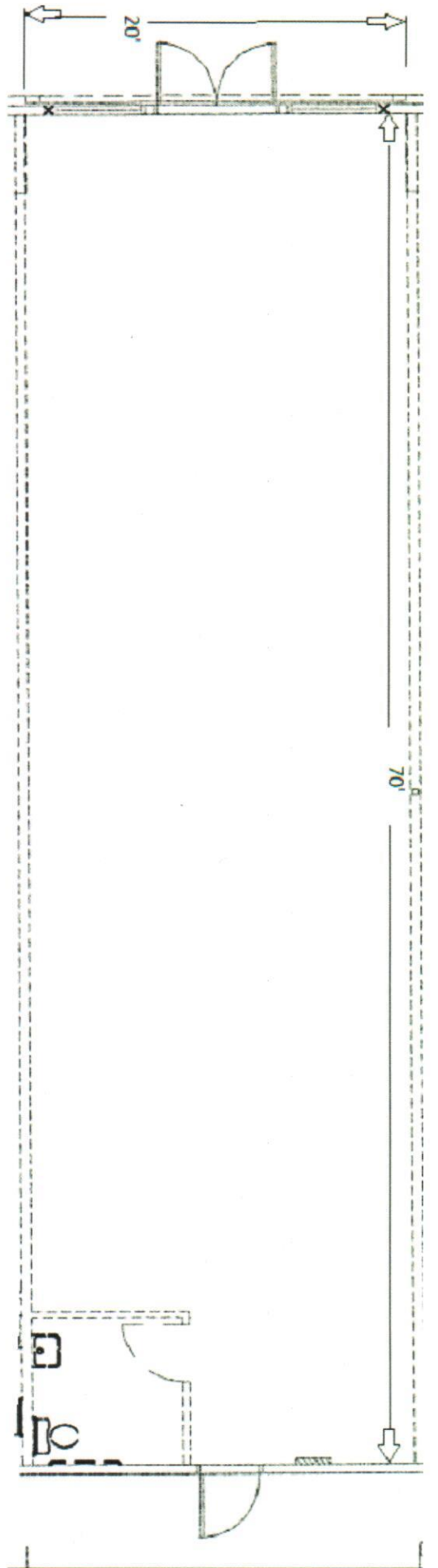


**PAD LIST**

- TOM'S BURGERS (CORNER)
- DOTTY'S (MIDDLE)
- DOLLAR TREE (**SITE** (SHOWN IN RED) SUBJECT)

**IN-LINE TENANT LIST**

- Suite 101 Go Auto Insurance
- Suite 102,103,104 Marianna discounts
- Suite 105 Cricket wireless
- Suite 106,107 Zaman Mini Mart and Liquor
- Suite 108 All State
- Suite 109 Atlantic Pharmacy
- Suite 11,112,113,114 Genesis Church



**Floor Plan**

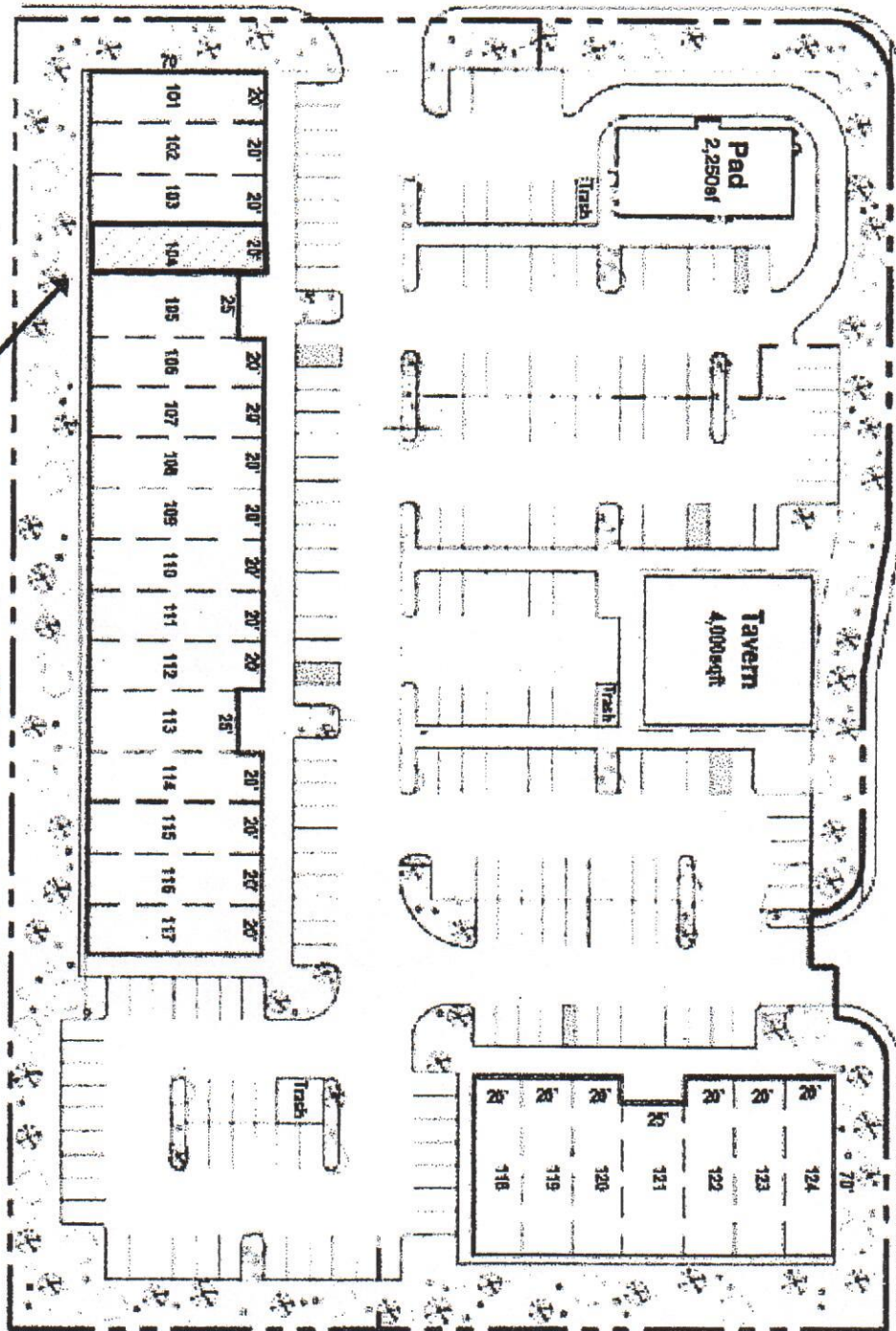
**Simmons Plaza  
2815 W Lake Mead Blvd  
Suite 104**



Lake Mead Boulevard

Ver 3.8 (07/13)

Simmons Street



All sizes are estimates only and do no reflect exact measurements.



Exhibit "A"  
Premises-Site Plan

**NOTES**

This map is for assessment use only and does NOT represent a survey. No liability is assumed for the accuracy of the data displayed herein. Information on roads and other non-assessed parcels may be obtained from the Road Document listing in the Assessor's Office. This map is compiled from official records, including surveys and deeds, but only contains the information required for assessment. See the recorded documents for more detailed legal information.

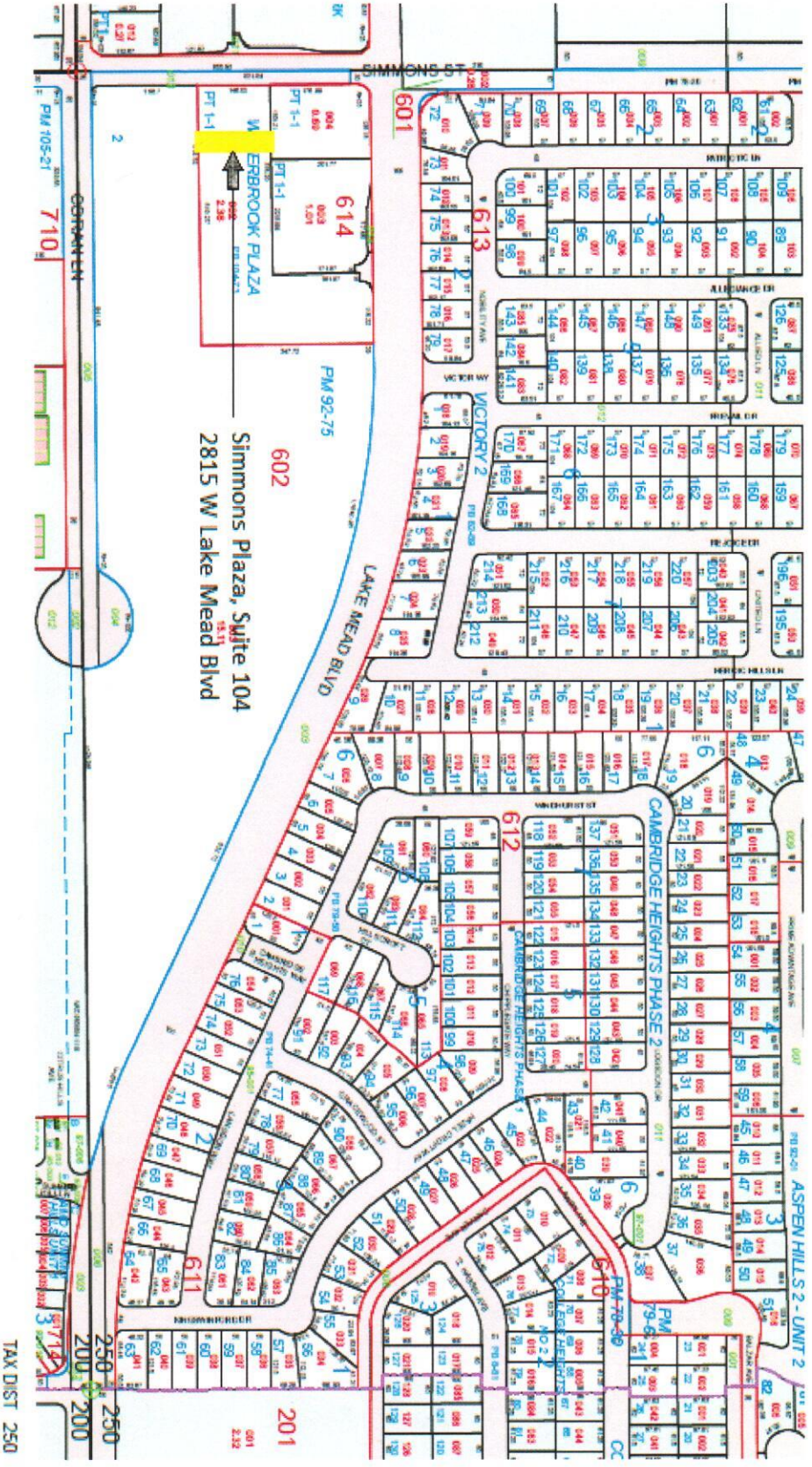
**MAP LEGEND**

- Parcel Boundary
- Sub-Boundary
- Field Boundary
- Historical (Labeled) Line
- Historical (Unlabeled) Line
- Historical FLD Boundary
- Section Line
- Condominium Unit
- As-Spice PCL
- Right of Way PCL
- Subdivided PCL
- 007 Road Parcel Number
- 001 Parcel Number
- 1.00 Acreage
- 202 Parcel, Survey Number
- 70 24-48 Plat Recording Number
- 5 Block Number
- 2 Lot Number
- 0.5 Acre Lot Number

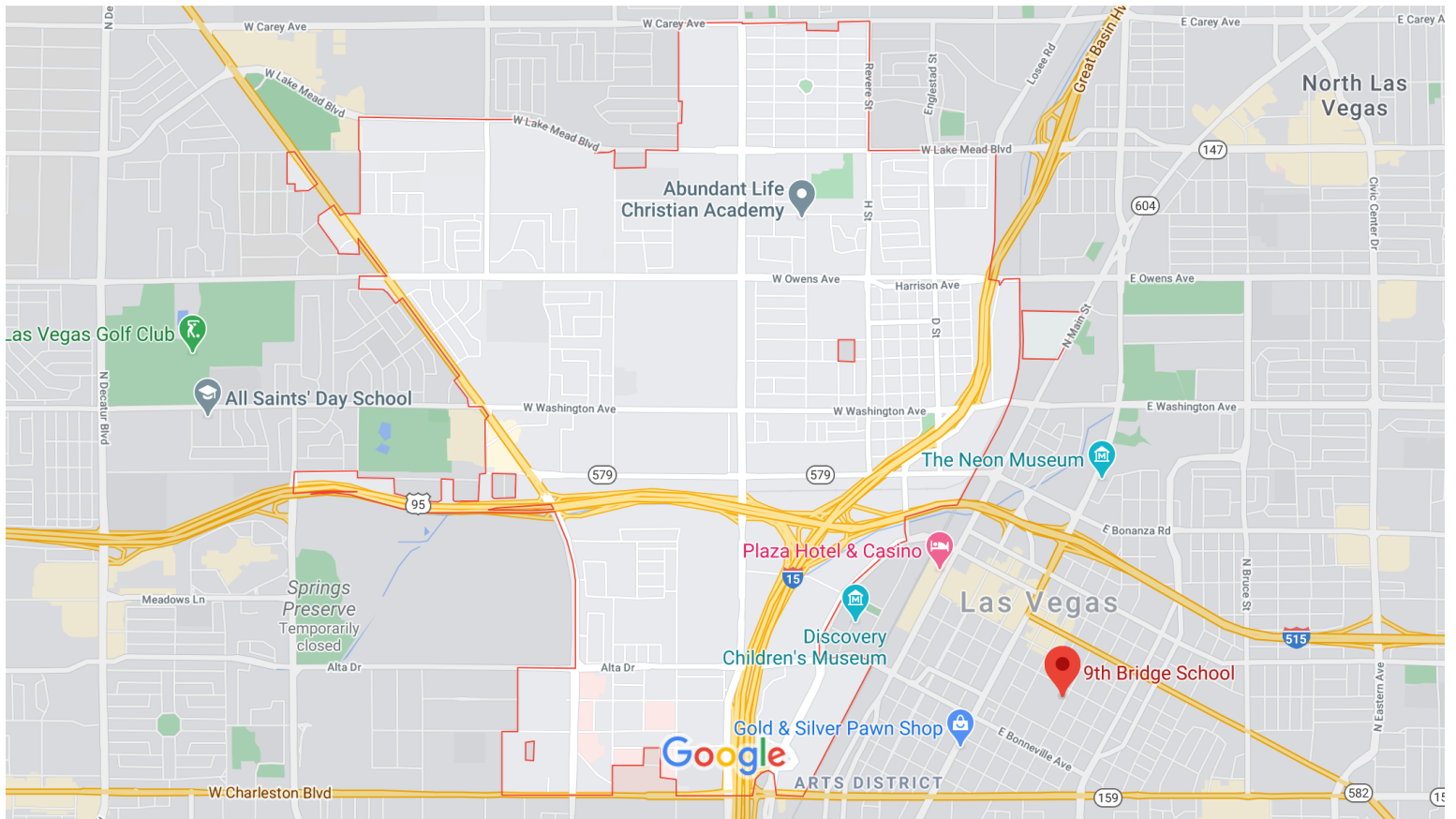
**Scale: 1" = 200'**

T20S R61E	20	S 2 NE 4	139-20-6
-----------	----	----------	----------

1	2	3	4	5	6	7	8	9	10
11	12	13	14	15	16	17	18	19	20
21	22	23	24	25	26	27	28	29	30
31	32	33	34	35	36	37	38	39	40
41	42	43	44	45	46	47	48	49	50



TAX DIST 250





## SITE\_CONTEXT

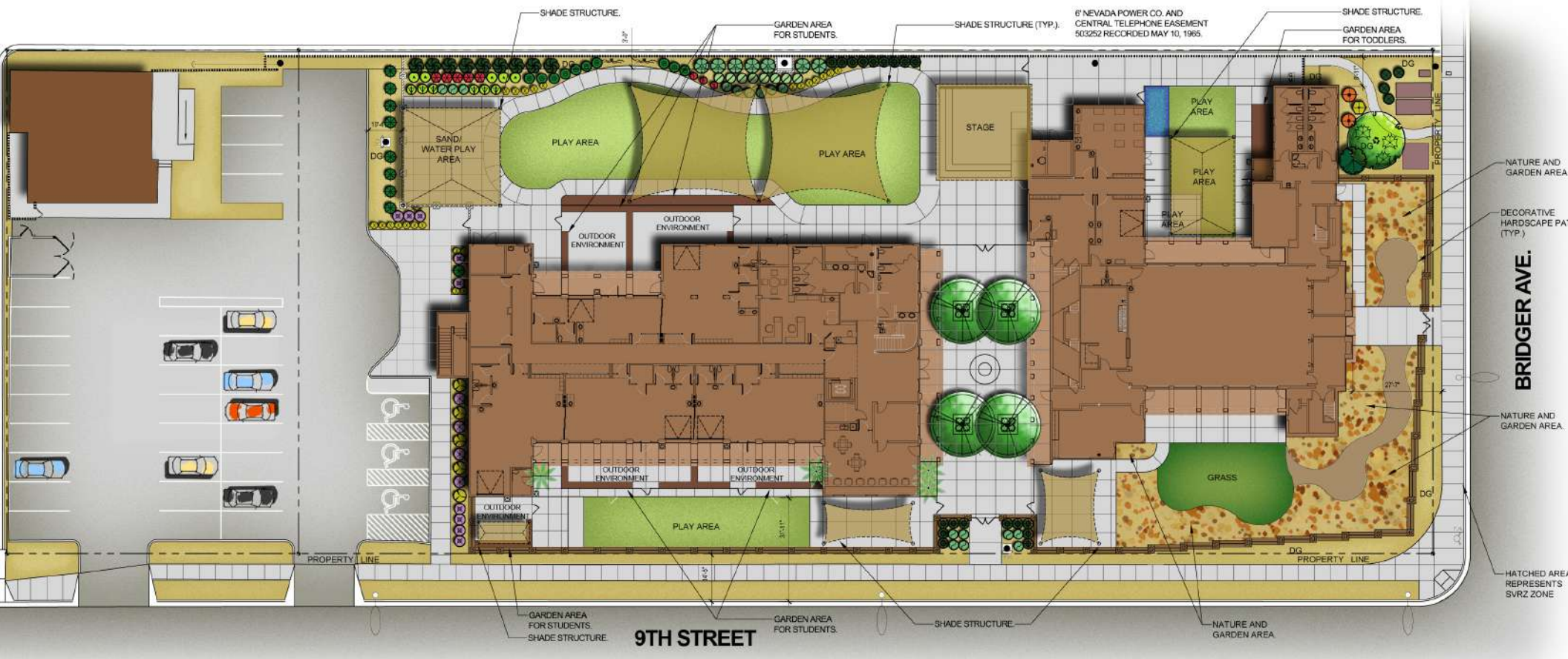




310 S. 9TH STREET  
LAS VEGAS, NEVADA 89101







# SITE PLAN





CLASSROOM SPACE  
 ANCILARY SPACE  
 ADMINISTRATIVE SPACE  
 EXISTING SPACE



## Las Vegas 89106 or near Property search

Zoning note: A minimum of a Special Use Permit will be required for a private/Charter school.

### LEASE AND FOR SALE PROPERTIES.

#### 1. 273 S Martin Luther King 89106

15,411sf to 30,833 sf- 20' clear height

1.5 ac to 2.59 ac

8-1 parking ratio.

Vacant; Previous warehouse location for Zappos shoes and prior tenant was Walker Furniture

Lease Rate: \$1.05/ sf/mo. NNN plus \$0.14 CAM

Comments: The owner may consider a short-term lease for ½ of the building, however, the owner would not provide any Tenant Improvement dollars. Excellent traffic ingress and egress. Excellent parking. Warehouse with little if any existing Tenant improvements.

Zoning: T5 Maker Zone (T5-M) Multiple uses allowed

*Update: Owner was only willing to lease the entire space for \$0.80/sf/mo + \$0.14 CAM = approx. \$28,983/month.*

#### 2. 260 S Martin Luther King 89106 Across from #1 273 MLK

7,520 sf

.6 ac

\$1.60 /sf modified gross

Comments: Little parking and poor traffic ingress and egress

Zoning: T4 Corridor Zone (T4-C)

*Update: Too small, poor traffic ingress and egress.*

#### 3. Edmond Town Center 89106

921-1061 W Owens

2,400 SF TO 18,267 SF

\$1.00 TO \$1.50/sf/mo. plus \$0.25 Cam

Zoning: C-1

*Update: Cost prohibitive. T.I. work too expensive and poor traffic ingress/egress.*

#### 4. 600 W Owens Ave 89106

8,650 sf

1.26 net acres

Current Use: Elks Lodge w/ Bar & restaurant

Zoning: C-1

Sale Price: lease rate negotiable or will sell, asking price: \$865,000.00

*Update: Too small for permanent site and too much work/expense to make temporary work.*

#### 5. Molasky Corporate Center

100 North City Parkway

Las Vegas, NV 89106 ● Office For Lease

Suite 160 08/24/2020

Space SF15,420

Rate/SF/Month\$1.50

Rate/SF/Year\$18.00

Lease Type Modified Gross Lease

Min Divis. 9,000 SF

Max Contig 15,420 SF

*Update: Zoning concerns. Ingress/Egress. Wouldn't rent to school.*

## **SALE PROPERTIES**

### **1. SEC Rancho Rd & Coran 89106**

22 ac

Will divide

Asking Price: \$10.00/sq. ft. -May sell for less depending on which part of the land.

Zoning: C-2

*Update: Considering for permanent site. LOI sent to seller.*

### **2. Bartlett Church**

1072 West Bartlett Avenue, Las Vegas, NV 89106

Price \$3,200,000

Land SF 52,708

Acres 1.21

Property Use Church

Zoning R-2

Parcel Number 139-21-501-003 & 139-21-510-244

Land Size 1.21 acres

Bld SF 21,000

*Update: Too small for permanent site. Church leased to somebody else for temp site.*

### **3. CVS**

1425 West Lake Mead Boulevard, Las Vegas, NV 89106

Price \$1,500,000

Land SF/\$ Per 43,560/\$34.44

Acres/\$ Per 1/\$1,500,000.00

Property Use Investment

Zoning GC

Parcel Number 139-21-701-010

Land Size 1 acres

Bld SF 11,604

*Update: Too small for permanent site*