



# **Nevada State Public Charter School Authority**

## **2021 Academic and Demographic Needs Assessment**

*January 22, 2021*

Contents of the Academic and Demographic Needs Assessment

I. Executive Summary ..... 3

II. Introduction to the Academic and Demographic Needs Assessment ..... 5

III. Definitions of Academic and Demographic Need ..... 6

    1. Demographics ..... 6

    2a. Academic Need: Geographies with 1- and 2-Star Schools (see Appendix B for definitions of Star Ratings) ..... 6

    2b. Academic Need: Students at Risk of Dropping out of School ..... 6

IV. Findings of the Academic and Demographic Needs Assessment ..... 8

    1. Demographics ..... 8

    2a. Academic Need: Geographies with 1- and 2-Star Schools ..... 9

    2b. Academic Need: Students at Risk of Dropping out of School ..... 13

V. Implications for SPCSA Authorizing Practices ..... 14

VI. Implementation of the Academic and Demographic Needs Assessment ..... 16

VII. Conclusion..... 18

VIII. Glossary of Terms ..... 19

IX. Appendices..... 20

    Appendix A: District Summaries ..... 21

    Appendix B: Definitions of Star Ratings ..... 22

    Appendix C: Stakeholder Engagement..... 25

## I. Executive Summary

In 2019, the Nevada State Legislature voted to pass Assembly Bill (AB) 462. In part, this legislation directed the Nevada State Public Charter School Authority (SPCSA) to annually conduct and incorporate the findings of “an evaluation of demographic information of pupils, the academic needs of pupils and the needs of any pupils who are at risk of dropping out of school in this State” into its charter school authorizing decisions—requirements codified in Nevada Revised Statute (NRS) [388A.220](#) and [388A.249](#).

The deadline for the first evaluation was established as July 30, 2019, with a requirement that the evaluation be updated annually by January 31. To this end, the SPCSA conducted an Academic and Demographic Needs Assessment in collaboration with the Nevada Department of Education (NDE) as well as local school districts, and the Authority board approved the first Academic and Demographic Needs Assessment on July 26, 2019. During the fall of 2019, the NDE released updated Nevada School Performance Framework (NSPF) school performance ratings and demographic data, and this information was incorporated into the December 2019 version of the Needs Assessment. Due to the COVID-19 pandemic, the NDE applied for and was granted a 2019-20 school year waiver from the U.S. Department of Education for certain school accountability requirements; accordingly, the NDE did not calculate the annual NSPF school star ratings. Therefore, this January 2021 iteration of the Needs Assessment incorporates the most recent school performance and enrollment data available from the NDE, including the 2018-19 NSPF school star ratings and the 2020-21 school year enrollment rates.

This document details how the SPCSA has defined academic and demographic need, the findings of the Needs Assessment, the implications of those findings, and examines its implementation.

The SPCSA worked in conjunction with local school districts and the NDE to establish definitions for demographic and academic needs that are transparent, grounded in student and school performance, and aligned to the Department’s school accountability system. These needs reflect the current state of education in Nevada and will evolve over time in response to changes in our state’s educational context.

The SPCSA has defined demographic and academic needs as follows, with additional details provided in Section III:

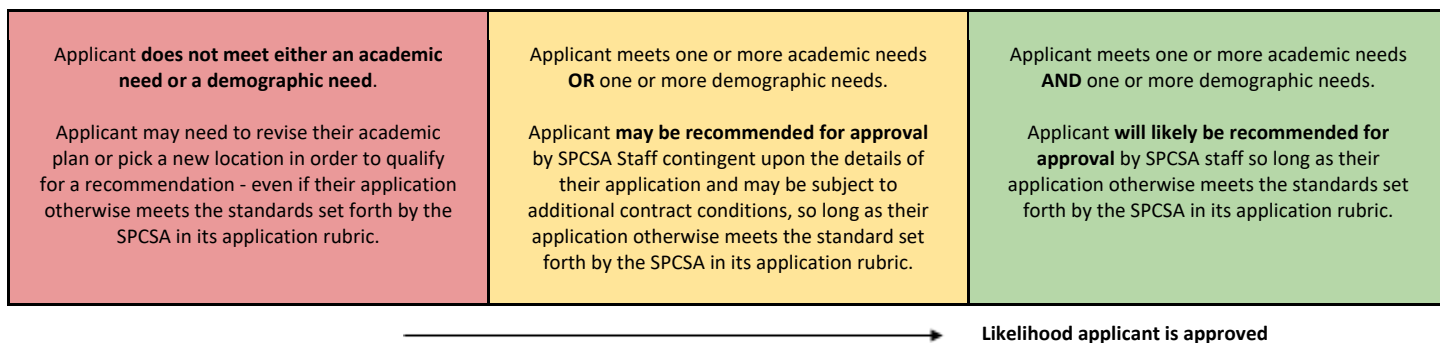
### 1. Demographic Needs

- A. Student groups that consistently underperform on the 3<sup>rd</sup>-8<sup>th</sup> grade Smarter Balanced Assessment (Math and ELA), the 11<sup>th</sup> grade ACT Assessment (Math and ELA), and in 4-year graduation rates present a demographic need; these student groups may benefit from the creation of high-quality school options focused on meeting their needs.

### 2. Academic Needs

- A. Geographies with a significant percentage of students enrolled in 1- and 2-star schools: In zip codes with one or more schools rated 1 or 2 stars in the Nevada School Performance Framework (NSPF), students are enrolling in schools that are not meeting or partially meeting state performance standards, and the addition of a 3-, 4- or 5-star school would provide an alternative option for these students; and
- B. Students at risk of dropping out: Despite a rapidly improving graduation rate, nearly one in five students does not graduate from high school in four years, with certain student groups persistently graduating at lower rates than their peers. Additional data show various student populations also have higher dropout rates than their peers.

[NRS 388A.249](#) requires that approval of any charter application must include a determination that the proposed school meets one or more of the needs defined in the Academic and Demographic Needs Assessment. Therefore, the SPCSA must evaluate charter applications based upon both the public charter school application rubric and the proposed school’s plans to meet statewide academic and demographic needs identified in the SPCSA’s Needs Assessment. SPCSA staff will make recommendations based on the approach outlined in the visual below. Ultimately, the Authority Board will vote to approve or deny an application.



The Needs Assessment is updated annually, in collaboration with the NDE and local school districts, to ensure that each charter application process is reflective of the state’s current academic and demographic needs. The SPCSA is most likely to approve high quality applications that address the needs identified in the Needs Assessment. In reviewing and approving charter applications, the SPCSA will solicit input and feedback from local school districts, municipalities, other key stakeholders, and the public at large.

The SPCSA would like to thank all members of the SPCSA’s Community Working Group, including the NDE, local school districts, local municipalities, and community organizations, as well as members of the Nevada Association of School Superintendents for their input and feedback on the Academic and Demographic Needs Assessment. The SPCSA looks forward to continued engagement with school districts, their boards of trustees, municipalities, and community leaders. Further information on engagement with stakeholders can be found in Appendix C.

## II. Introduction to the Academic and Demographic Needs Assessment

### *Legislative context and purpose*

In May of 2019, the Nevada State Legislature passed Assembly Bill (AB) 462, which was signed into law with an effective date of June 3, 2019. The legislation requires that public charter school sponsors make several changes to their authorizing and accountability practices. These changes included the requirements—now found in [NRS 388A.220](#) and [388A.249](#)—that the SPCSA conduct an annual assessment of statewide academic and demographic needs which must inform SPCSA’s charter authorization planning and decisions.

AB 462 added language to [NRS 388A.220](#), which states that “On or before January 31 of each year, the State Public Charter School Authority shall prepare, in collaboration with the Nevada Department of Education and, to the extent practicable, the board of trustees of each school district in this State and any other sponsor of a public charter school in this State, an evaluation of demographic information of pupils, the academic needs of pupils, and the needs of any pupils who are at risk of dropping out of school in this state.”

For each charter application, SPCSA staff conducts an application review process and makes recommendations to the SPCSA board. Subsequently, the SPCSA board reviews each application, its accompanying staff recommendation, and votes to approve or deny the proposal. In the past, this review process, outlined in [NRS 388A.249](#), has required that an application both complied with applicable laws and regulations and that the applicant “demonstrated competence in accordance with the criteria for approval prescribed by the sponsor.” AB 462 amended [NRS 388A.249](#), stating that staff shall additionally “consider the degree to which the proposed public charter school will address the needs identified” and “solicit input from the board of trustees of the school district in which the proposed public charter school will be located” in determining their application recommendations to the board. Similarly, [NRS 388A.249](#) states the SPCSA board may approve applications that, in addition to previous requirements noted, meet at least one need identified in the Academic and Demographic Needs Assessment and have received sufficient public input.

This document will address the following questions:

1. What are the standards and measures according to which the SPCSA will assess which specific student groups may benefit from a public charter school option?
2. What are the standards and measures according to which the SPCSA will assess whether a geography has a need for a public charter school option?
3. What are the standards and measures according to which the SPCSA will assess the needs of students who are at risk of dropping out of school?
4. Based on the foregoing, which communities seem most likely to benefit from the strategic placement of a public charter school?
5. What are the implications of the foregoing for the SPCSA’s authorizing practices?

The objective of this document is to assess statewide academic and demographic needs as outlined in [NRS 388A.220](#). The specific measures outlined in this document are not, however, the only factors that the SPCSA will consider in authorizing new schools. [NRS 388A.220](#) also calls for public input in both this Needs Assessment and in the charter school authorizing process. In both processes moving forward, the SPCSA will consider many factors raised by the community, including evidence of demand for new schools, whether due to the need for additional facility capacity, students on public charter school waiting lists, or families desiring different educational options.

Furthermore, as the SPCSA develops new versions of the Academic and Demographic Needs Assessment in future years, the SPCSA will consider changes in Nevada’s educational landscape and may propose revisions in the way that academic and demographic needs are defined and measured, as appropriate. Additionally, the SPCSA will continue the practice of providing local school districts, municipalities, and other members of the public with the opportunity to provide input into and feedback on the definitions of academic and demographic needs, as well as the methodology of the Needs Assessment.

### III. Definitions of Academic and Demographic Need

[NRS 388A.220](#) requires that the Academic and Demographic Needs Assessment evaluate the “demographic information of pupils, the academic needs of pupils, and the needs of any pupils who are at risk of dropping out of school in this state.”

Accordingly, the SPCSA has defined a set of needs that are:

- Supported by rationale (data);
- Accompanied by information (maps and/or data) that are useful for applicants seeking to open public charter schools, as well as SPCSA staff and Authority Board Members reviewing applications for alignment to need;
- Reflective of the current context of the SPCSA (demographic makeup, locations, density, and performance of schools); and
- Responsive to the statewide, district, and localized educational context.

While the definitions of needs are specific, charter applicants have the flexibility to determine how they would address one or more of the needs, if approved. These definitions will evolve over time to correspond to changes in Nevada’s academic and demographic needs.

#### 1. Demographics

Applicants meeting this need will propose a school model that includes demonstrated capacity, credible plans, and thorough research and analysis in order to intentionally serve the following student groups, each of which has been identified as persistently underperforming based on data provided by the NDE: Students qualifying for free or reduced-price lunch (FRL), English Language Learners (ELLs), and Students with Disabilities (those with an Individual Education Program, or IEP). Successful applicants will demonstrate the capacity to support these student groups in achieving academic performance at or above the state average.

*Rationale: These student groups have consistently performed below the state average across various academic measures, including the 3<sup>rd</sup>-8<sup>th</sup> grade Smarter Balanced Assessment (in both Math and ELA), the 11<sup>th</sup> grade ACT Assessment (in both Math and ELA), and in 4-year graduation rates. Historically, most school districts have used enrollment rates of students qualifying for free and reduced-price lunch as a proxy measure for students in poverty.*

#### 2a. Academic Need: Geographies with 1- and 2-Star Schools (see Appendix B for definitions of Star Ratings)

Applicants meeting this need will propose a school model that includes demonstrated capacity, credible plans, and thorough research and analysis to intentionally provide access to 3-, 4- and 5-star schools in zip codes where a significant percentage of students are attending a 1- or 2-star school. A map and list of zip codes is provided within this document; SPCSA charter schools are removed from the data set used to identify zip codes.

*Rationale: The Nevada School Performance Framework (NSPF) school star ratings were developed by the NDE with input from local school districts and other stakeholders across the state. The NSPF identifies 3-star performance as adequate, while 2-star schools are defined as partially meeting standards and 1-star schools are defined as not meeting standards. In zip codes with a 1- or 2-star school, students are enrolling in schools that are, by definition, inadequate, and the addition of a 3-, 4- or 5-star school would provide an alternative option for these students. The use of the star rating as a measure of school and student success has been reaffirmed by the state’s largest school district, which has recently established a 5-year goal of achieving a rating of 3-stars or better for all schools in the district.*

#### 2b. Academic Need: Students at Risk of Dropping out of School

Applicants meeting this need will propose a public charter school model that includes demonstrated capacity, credible plans, and thorough research and analysis to prevent at-risk students from dropping out of school. Models may include but are not limited to programs designed for student groups that are most at-risk of dropping out or programs aimed at enabling credit-deficient students to get back on track to graduate. Applicants should demonstrate a strong

understanding of grade-level appropriate indicators for successful high school completion, such as early literacy, attendance, and credit sufficiency and plans to enable students to successfully meet these milestones.

*Rationale: Despite a rapidly improving graduation rate, nearly one in five Nevada students do not graduate from high school within four years, with certain student groups persistently graduating at lower rates than their peers. Additionally, various populations have higher dropout rates than their peers. Furthermore, research has shown that there are early indicators for students at risk of dropping out of school that can be proactively addressed; per [Attendance Works](#), chronic absenteeism is a critical factor in student academic success and in certain circumstances is associated with increased risk of dropping out of school. Other research by the [Annie E. Casey Foundation](#) found that students “who do not read proficiently by third grade are four times more likely to leave school without a diploma than proficient readers.”*

[NRS 388A.249](#) requires that approval of any charter application must include a determination that the proposed school meets one or more of the needs identified in the Academic and Demographic Needs Assessment. The SPCSA has adjusted the charter application process such that both the SPCSA staff review of charter applications and Authority Board decisions on charter applications are both reflective of district input as well as the findings of the Needs Assessment. The SPCSA updates the Academic and Demographic Needs Assessment on an annual basis in order to ensure that each charter application process is reflective of the state’s current academic and demographic needs.

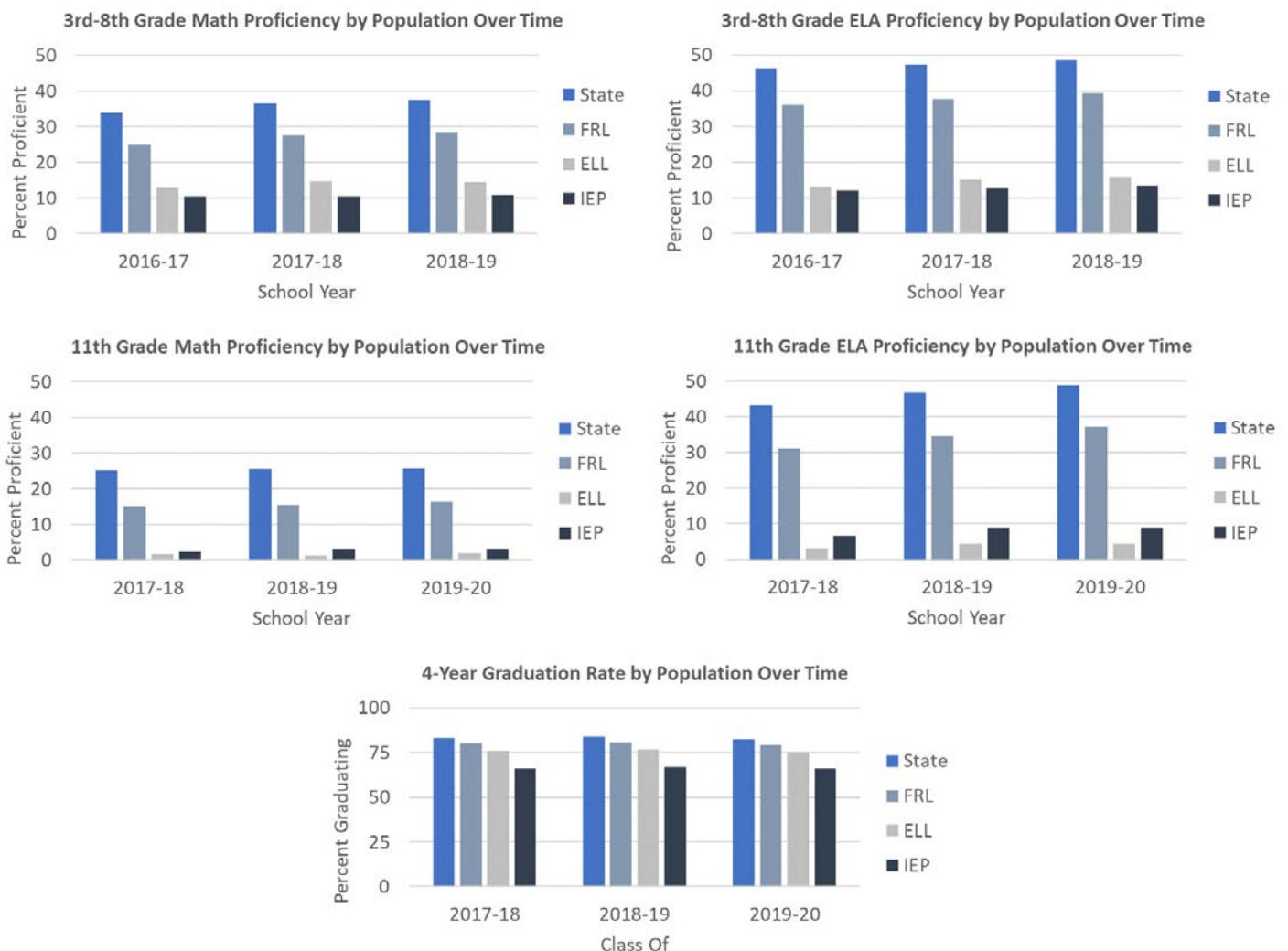
## IV. Findings of the Academic and Demographic Needs Assessment

The SPCSA has collaborated with the NDE and local Nevada school districts to conduct the Academic and Demographic Needs Assessment. The SPCSA will review charter applications in consideration of the Needs Assessment findings and is most likely to approve high quality applications that address the needs identified in the Needs Assessment. In reviewing and approving charter applications, the SPCSA solicits input and feedback from local school districts, municipalities, other key stakeholders, and the public at large.

The information below provides a summary of current trends identified through this Needs Assessment. The SPCSA updates the Needs Assessment annually. As the educational landscape evolves, so too do the content and findings within the Needs Assessment.

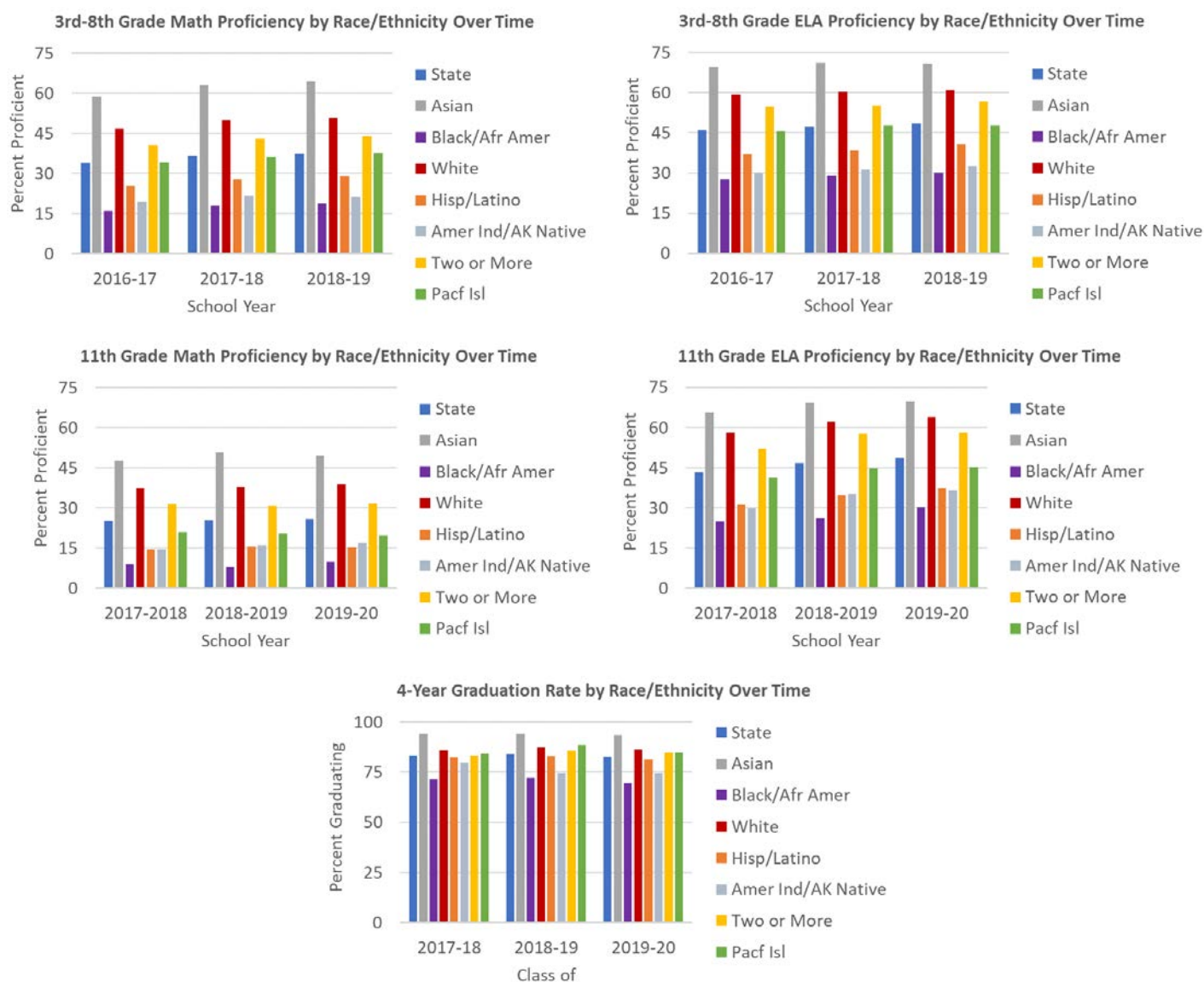
### 1. Demographics

The analysis found that Economically Disadvantaged Students (those qualifying for free or reduced-price lunch or FRL), English Language Learners (ELLs), and Students with Disabilities (those with Individualized Education Programs or IEPs) have historically underperformed relative to the average Nevada student across multiple academic measures, including the 3<sup>rd</sup>-8<sup>th</sup> grade Smarter Balanced Assessment in Math/ELA, the 11<sup>th</sup> grade ACT Assessment in Math/ELA, and 4-year graduation rates. The charts below show the academic performance of the FRL, ELL, and IEP populations compared to the state for the three most recent available years of assessment and graduation rate data.





In addition, while the focus of this analysis was on the three aforementioned student groups (FRL, ELL, and IEP populations), data from the Nevada Department of Education also showed that Black/African American, Hispanic/Latino, and American Indian/Alaskan Native students underperformed relative to the average Nevada student in the three most recent years of available data for the 3<sup>rd</sup>-8<sup>th</sup> grade Smarter Balanced Assessment in Math/ELA, the 11<sup>th</sup> grade ACT Assessment in Math/ELA, and 4-year graduation rates.



## 2a. Academic Need: Geographies with 1- and 2-Star Schools

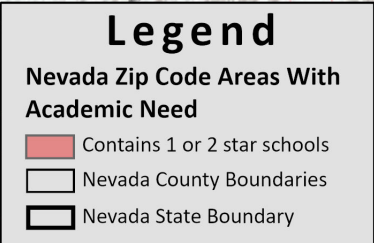
The following analysis provides an overview of academic need, as measured by the existence of 1- and 2-star schools, in Nevada as a whole and in each local school district. These data do not include public charter schools authorized by the SPCSA. Please note that a detailed summary of each local school district can be found in [Appendix A](#). These analyses reflect the most recent data available: the 2018-19 school year Nevada School Performance Framework (NSPF) school star ratings and the 2020-21 school year enrollment data, both from the Nevada Department of Education.

- Statewide (does not include SPCSA-sponsored charter schools)
  - In the state of Nevada, 17 local school districts serve approximately 418,602 students in grades K-12 across 141 zip codes;

- In the state of Nevada, there are 260 local district schools rated 1 or 2 stars across 94 zip codes that serve approximately 139,884 students, or 33.4% of students enrolled in local district schools.
- Carson City School District
  - The Carson City School District serves about 7,668 students in 11 schools across 3 zip codes; and
  - In the district, there are 4 schools rated 1 or 2 stars across 3 zip codes that serve about 2,332 students, or 30.4% of students in the district.
- Churchill County School District
  - The Churchill County School District serves about 3,086 students in 5 schools across 1 zip code; and
  - In the district, there is 1 school rated 1 or 2 stars in 1 zip code that serves about 757 students, or 24.5% of students in the district.
- Clark County School District
  - The Clark County School District serves about 307,228 students in 388 schools across 65 zip codes; and
  - In the district, there are 160 schools rated 1 or 2 stars across 42 zip codes that serve about 107,970 students, or 35.1% of students in the district.
- Douglas County School District
  - The Douglas County School District serves about 5,281 students in 20 schools across 6 zip codes; and
  - In the district, there are 2 schools rated 1 or 2 stars across 2 zip codes that serve about 87 students, or 1.6% of students in the district.
- Elko County School District
  - The Elko County School District serves about 9,391 students in 36 schools across 9 zip codes; and
  - In the district, there are 11 schools rated 1 or 2 stars across 7 zip codes that serve about 2,423 students, or 25.8% of students in the district.
- Esmeralda County School District
  - The Esmeralda County School District serves about 92 students in 7 schools across 3 zip codes; and
  - In the district, there are 2 schools rated 1 or 2 stars across 2 zip codes that serve about 39 students, or 42.3% of students in the district.
- Eureka County School District
  - The Eureka County School District serves about 312 students in 4 schools across 2 zip codes; and
  - In the district, there is 1 school rated 1 or 2 stars in 1 zip code that serves about 34 students, or 10.8% of students in the district.
- Humboldt County School District
  - The Humboldt County School District serves about 3,195 students in 17 schools across 5 zip codes; and
  - In the district, there are 6 schools rated 1 or 2 stars across 4 zip codes that serve about 1,084 students, or 33.9% of students in the district.
- Lander County School District
  - The Lander County School District serves about 984 students in 5 schools across 2 zip codes; and
  - In the district, there is 1 school rated 1 or 2 stars in 1 zip code that serves about 384 students, or 39% of students in the district.
- Lincoln County School District
  - The Lincoln County School District serves about 789 students in 10 schools across 4 zip codes; and
  - In the district, there is 1 school rated 1 or 2 stars in 1 zip code that serves 69 students, or 8.7% of students in the district.
- Lyon County School District
  - The Lyon County School District serves about 8,736 students in 22 schools across 5 zip codes; and
  - In the district, there are 9 schools rated 1 or 2 stars across 5 zip codes that serve about 3,112 students, or 35.6% of students in the district.
- Mineral County School District
  - The Mineral County School District serves about 540 students in 4 schools across 2 zip codes; and

- In the district, there are 2 schools rated 1 or 2 stars across 2 zip codes that serve about 136 students, or 25.1% of students in the district.
- Nye County School District
  - The Nye County School District serves about 5,169 students in 27 schools across 9 zip codes; and
  - In the district, there are 12 schools rated 1 or 2 stars across 8 zip codes that serve about 2,583 students, or 49.9% of students in the district.
- Pershing County School District
  - The Pershing County School District serves about 627 students in 4 schools across 1 zip code; and
  - In the district, there are 2 schools rated 1 or 2 stars in 1 zip code that serve about 449 students, or 71.6% of students in the district.
- Storey County School District
  - The Storey County School District serves about 446 students in 4 schools across 2 zip codes; and
  - In the district, there are 0 schools rated 1 or 2 stars.
- Washoe County School District
  - The Washoe County School District serves about 63,891 students in 123 schools across 19 zip codes; and
  - In the district, there are 39 schools rated 1 or 2 stars across 11 zip codes that serve about 17,639 students, or 27.6% of students in the district.
- White Pine County School District
  - The White Pine County School District serves about 1,167 students in 9 schools across 4 zip codes; and
  - In the district, there are 7 schools rated 1 or 2 stars across 3 zip codes that serve about 786 students, or 67.3% of students in the district.

The subsequent page contains a statewide map indicating the zip codes that contain 1- and 2-star schools. See Appendix A for a map of each local school district.

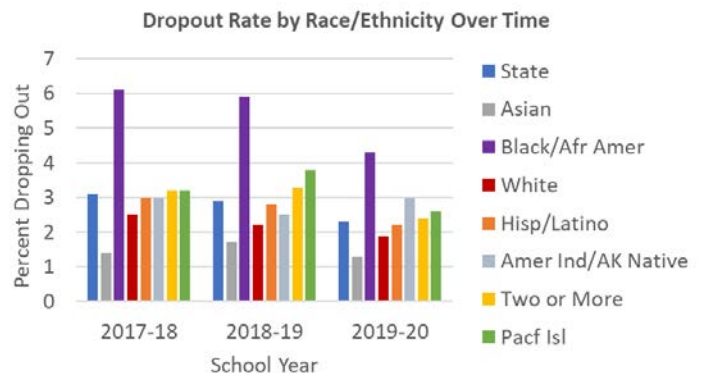
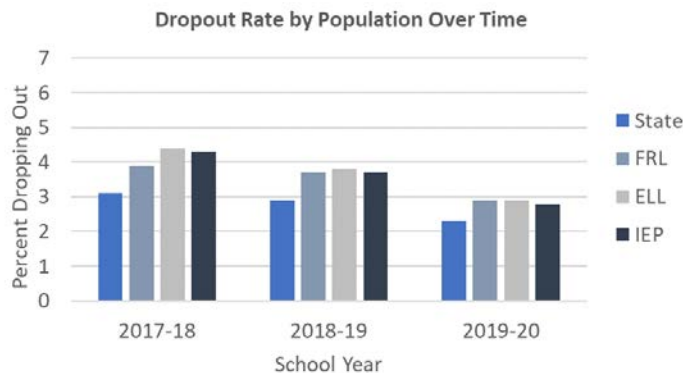


## 2b. Academic Need: Students at Risk of Dropping out of School

As shown previously, certain Nevada student groups graduate from high school at lower rates than their peers, including Economically Disadvantaged Students (those qualifying for free or reduced-price lunch or FRL), English Language Learners (ELLs), Students with Disabilities (those with Individualized Education Programs or IEPs), and students identifying as Black/African American, Hispanic/Latino, and American Indian/Alaskan Native.

These graduation rate trends generally align with Nevada Department of Education dropout data for grades six to twelve, which demonstrate that FRL, IEP, ELL, and various race/ethnicity populations have higher dropout rates than their peers.

- As seen in the charts below:
  - Over the past three years, the students belonging to the FRL, ELL, and IEP populations dropped out of school at a higher rate than the average of Nevada student.
  - Over the past three years, students identifying as Black/African American, Two or More Races, or Pacific Islander dropped out of school at a higher rate than the average of Nevada student.
  - In each of the past three years, students identifying as Black/African American have had the highest dropout rates of any population.
  - Although students identifying as American Indian/Alaskan Native were below the state dropout rate in 2017-18 and 2018-19, their dropout rate in 2019-20 was above the state average.





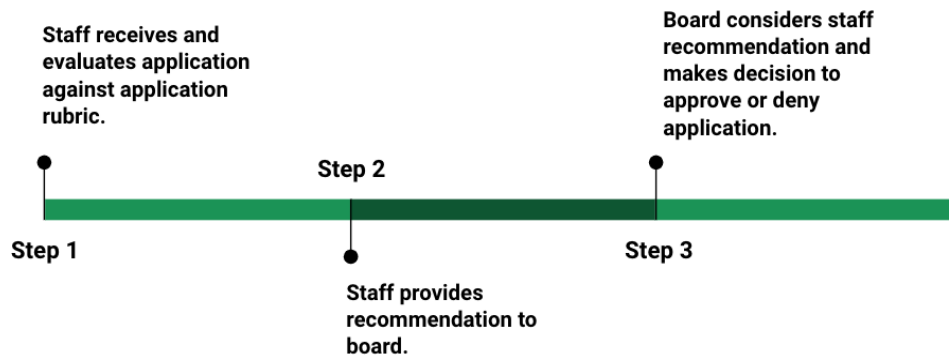
## V. Implications for SPCSA Authorizing Practices

The SPCSA’s charter application process has always required that the charter applicant define the academic need the proposed school would serve as well as the school’s academic, operational, and financial plans. Based on the information provided, the SPCSA review team then evaluated applicants and recommended approval of those that addressed each section with “specific and accurate information that shows thorough preparation, presents a clear, realistic picture of how the school expects to operate, and inspires confidence in the applicant’s capacity to carry out the plan effectively in a way which will result in a 4- or 5-star school.”<sup>1</sup> The revisions to [NRS 388A.220](#) set forth in AB 462 did not contradict these historical practices, which are aligned to national best practices. However, [NRS 388A.220](#) now requires that the SPCSA augment its authorizing process in important ways as described below.

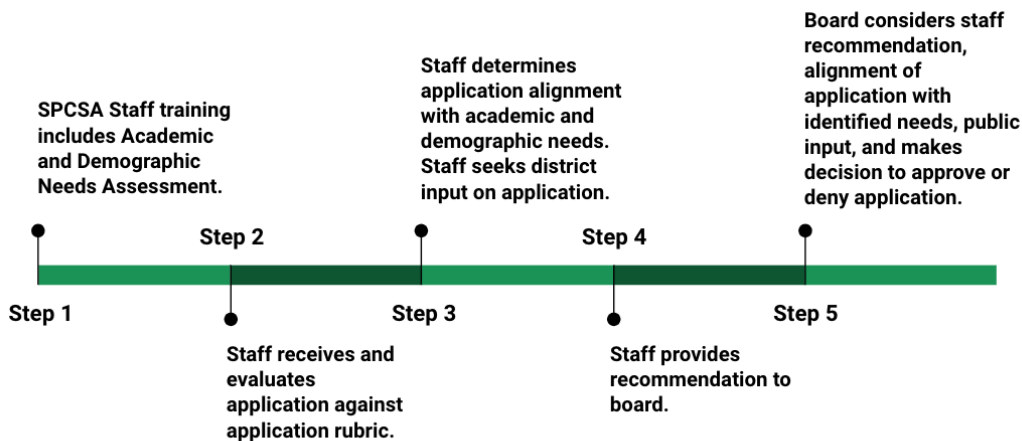
The SPCSA will continue to evaluate whether public charter school applications comply with all applicable laws and regulations as well as evaluate whether the proposal demonstrates competence that will “likely result in a successful opening and operation of the charter school.”<sup>2</sup> However, charter school sponsors may now approve only those public charter school applications that are found to address one or more of the needs identified in the sponsor’s most recent Needs Assessment.

In response to the requirements outlined by AB 462, the SPCSA has adjusted the charter application process as shown below:

### Former Process



### Updated Process



<sup>1</sup> Per SPCSA Application Rubric


<sup>2</sup> [NRS 388A.249](#)

The SPCSA staff review of charter applications and Authority Board approval of charter applications will still consider the quality of applications. Both stages now additionally consider (1) an application’s alignment with the findings of the Academic and Demographic Needs Assessment, (2) district input on an application’s alignment with the Needs Assessment, and (3) public input on demand for new schools.

Phase	Details	Who Leads?	Who can provide input?
Review of Charter Applications	Charter application review assesses both the quality of the application as well as the application’s responsiveness to the findings of the Needs Assessment.	SPCSA staff	Local school district where the proposed school would be located
Approval of Charter Applications	<p>The SPCSA board may only approve schools that (1) meet the standards for quality set by the SPCSA and (2) align to one or more needs identified in the Academic and Demographic Needs Assessment.</p> <p>In considering applications for approval, the SPCSA solicits public input. This involves targeted outreach to key stakeholders, including but not limited to local school districts and municipalities. The public input process explicitly addresses questions of demand for new schools including district facility capacity and public charter school waiting lists.</p>	SPCSA board	SPCSA staff, members of the public

In determining whether to approve a charter application, the SPCSA will consider the findings of the Academic and Demographic Needs Assessment. SPCSA staff will make recommendations based on the approach outlined in the visual below. Ultimately, the Authority Board will vote to approve or deny an application.

<p>Applicant <b>does not meet either an academic need or a demographic need.</b></p> <p>Applicant may need to revise their academic plan or pick a new location in order to qualify for a recommendation - even if their application otherwise meets the standards set forth by the SPCSA in its application rubric.</p>	<p>Applicant meets one or more academic needs <b>OR</b> one or more demographic needs.</p> <p>Applicant <b>may be recommended for approval</b> by SPCSA staff contingent upon the details of their application and may be subject to additional contract conditions, so long as their application otherwise meets the standard set forth by the SPCSA in its application rubric.</p>	<p>Applicant meets one or more academic needs <b>AND</b> one or more demographic needs.</p> <p>Applicant <b>will likely be recommended for approval</b> by SPCSA staff so long as their application otherwise meets the standards set forth by the SPCSA in its application rubric.</p>
--	--	---

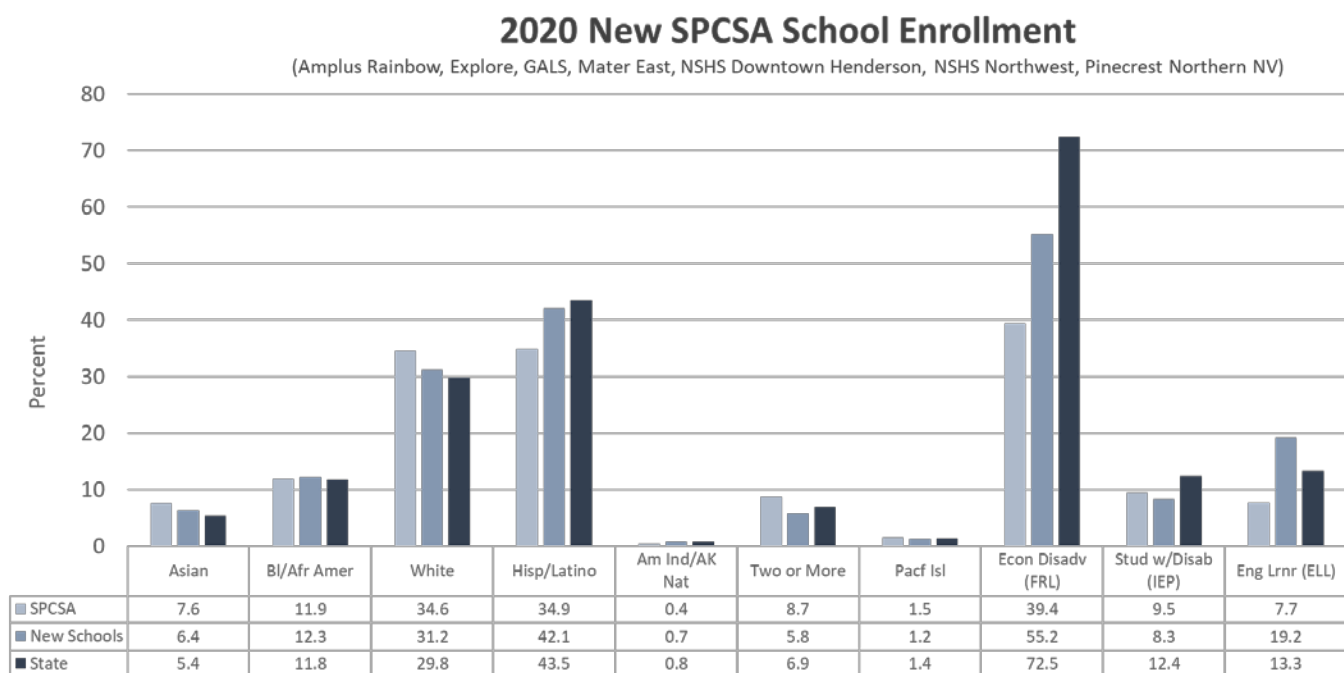

 Likelihood applicant is approved

## VI. Implementation of the Academic and Demographic Needs Assessment

When AB 462 was signed into law in June of 2019, the SPCSA had two school campuses, expansions of existing charter holders, already approved to open in the fall of 2020: Amplus Academy's Rainbow Campus and Nevada State High School's Northwest Campus. In addition, the SPCSA was in receipt of several amendment applications from existing charter holders and was anticipating the receipt of several new charter applications in July of 2019. Even prior to the passage and approval of AB 462, SPCSA staff began meeting with potential applicants for new schools and expansions to discuss the pending legislation. The summer and fall of 2019 marked a transition for staff and the Authority to these new Authorizing requirements and the schools that opened in the fall of 2020 reflect this transition. The seven new campuses that opened in 2019 represent a combination of actions taken by the Authority prior to the passage of AB 462 and during its initial implementation.

In addition, during the fall of 2019, the Authority developed a new five-year strategic plan centered around the vision of *Equitable access to diverse, innovative, and high-quality public schools for every Nevada student*. This strategic plan helped to cement the Authority's focus on increasing enrollment diversity in order to serve a population that is representative of the state. While we understand that shifting the overall demographics of students will take time, the SPCSA is closely watching the demographics of our new school campuses to understand the impacts of the Authority's actions. With this context in mind, we see noticeable progress toward our aim to serve a population that is representative of the state.

The graph below shows that in just one year, and even when including school campuses that were approved prior to the passage of AB 462, the demographics of our new schools are significantly more representative of the state's overall student population.



Enrollment rates are from the Nevada Department of Education (NDE) October 1 2020 validation day.



The table below provides demographics for each of the school campuses that opened in the fall of 2020. In addition, the statewide and local school district demographics are provided for reference.

Entity	2020 Enrollment	% Asian	% BI/Afr Amer	% White	% Hisp/Latino	% Amer Ind/AK Native	% Two or More	% Pacf Isl	% Econ Disadv (FRL)	% Stud w/Disab (IEP)	% Eng Lrn (ELL)
<b>STATE</b>	<b>486633</b>	<b>5.4</b>	<b>11.8</b>	<b>29.8</b>	<b>43.5</b>	<b>0.8</b>	<b>6.9</b>	<b>1.4</b>	<b>72.5</b>	<b>12.4</b>	<b>13.3</b>
<b>SPCSA</b>	<b>53223</b>	<b>7.6</b>	<b>11.9</b>	<b>34.6</b>	<b>34.9</b>	<b>0.4</b>	<b>8.7</b>	<b>1.5</b>	<b>39.4</b>	<b>9.5</b>	<b>7.7</b>
<b>CLARK COUNTY</b>	<b>319293</b>	<b>5.9</b>	<b>15.3</b>	<b>22.2</b>	<b>47.2</b>	<b>0.3</b>	<b>7.1</b>	<b>1.6</b>	<b>85.6</b>	<b>12.4</b>	<b>15.1</b>
Amplus Rainbow*	773	20.5	19.9	32.6	16.0	0.2	8.6	1.9	27.1	<5.0	7.2
Explore Academy**	136	2.2	19.8	50.0	24.2	0.0	0.7	2.9	41.1	13.9	0.0
GALS	96	4.1	18.7	6.2	65.6	0.0	3.1	2.0	>95.0	11.4	17.7
Mater East	1143	0.6	12.7	5.2	76.9	0.0	3.4	0.7	>95.0	9.0	42.6
NSHS Dwtm Henderson	100	3.0	2.0	73.0	13.0	0.0	8.0	1.0	14.0	n<10	0.0
NSHS NW*	99	7.0	17.1	39.3	22.2	0.0	11.1	3.0	37.3	n<10	0.0
<b>WASHOE COUNTY</b>	<b>64988</b>	<b>4.4</b>	<b>2.5</b>	<b>42.3</b>	<b>41.7</b>	<b>1.2</b>	<b>6.1</b>	<b>1.3</b>	<b>46.8</b>	<b>13.9</b>	<b>14.1</b>
Pinecrest Northern NV	685	1.6	1.6	65.6	20.7	2.9	7.0	0.4	17.2	12.4	<5.0

\*Approved prior to passage of AB 462

\*\*Approved by Achievement School District and transferred to SPCSA prior to opening per Section 80.75 of Assembly Bill 78 (2019)

Finally, the maps below show the location of each school campus that opened in the fall of 2020. The shaded areas indicate zip code that were identified under the *Academic Need: Geographies with 1- and 2-Star Schools*.

[MAP OF NEW SCHOOLS WILL BE INSERTED HERE]

## VII. Conclusion

The SPCSA approved the first iteration of the Academic and Demographic Needs Assessment on July 26, 2019, and the second was approved in January 2020. This third iteration of the Needs Assessment incorporates the most recent school performance and enrollment data available from the NDE, including the 2018-19 NSPF school star ratings and the 2020-21 school year enrollment rates. Going forward, the SPCSA will update the Needs Assessment annually.

The Needs Assessment provides up-to-date information about the demographics and academic needs of students across the state of Nevada. In addition, the Needs Assessment serves as a key driver in the development of the Growth Management Plan which is required under [NRS 388A.167](#) as amended by AB 462. While the Needs Assessment provides a snapshot in time of the needs of students in Nevada, the Growth Management Plan provides a preview of how new public charter schools will address the identified needs of students in Nevada.

Ultimately, AB 462 created a platform for the strategic and informed growth of public charter schools. Taken together, the Needs Assessment and the Growth Management Plan will help the SPCSA to fulfill its responsibilities as an authorizer of public charter schools that are responsive to the needs of students and families throughout Nevada.

## VIII. Glossary of Terms

Unless otherwise noted, all definitions are from the [Nevada Report Card Website](#).

**American College Test (ACT) Assessment:** A standardized assessment for high school students used as Nevada's college and career readiness assessment required by NRS 390.600.

**Chronic Absenteeism:** Chronic absenteeism is a school quality measure that captures the rate of students who are absent for 10% or more of their enrolled days.

**Credit Deficiency:** Not having enough credits to progress to the next grade or graduate.

**Dropout:** Any pupil who withdrew during the previous school year for any reason specified in subsection 3 of NAC 387.215.

**English Language Learners:** English Language Learners (ELLs) are students who are unable to communicate fluently or learn effectively in English, who typically require specialized or modified instruction in both the English language and in their academic courses. Previously referred to as LEP.

**Free or Reduced-Price Lunch:** Students who are from households that qualify by income to receive free or reduced-price lunch at their school.

**Graduation Rate:** The rate at which 9th graders graduate by the end of the 12th grade (the number of students who graduate in four years with a regular high school diploma divided by the number of students who form the adjusted cohort for the graduating class.)

**Individualized Education Program (IEP):** A written statement for each child with a disability that is receiving special education services that is developed and reviewed by the IEP Team.

**Nevada Department of Education:** The State of Nevada's educational agency.

**Nevada Revised Statute:** Codified laws of the State of Nevada.

**Nevada School Performance Framework (NSPF):** The Nevada school rating system, where each public school in the state is issued an annual index score and star rating from 1-5 based on that school's performance on specific Measures.

**Nevada State Public Charter School Authority (SPCSA):** A governmental agency of the state of Nevada and a statewide charter school sponsor.<sup>3</sup>

**Proficiency:** Students demonstrating the successful acquisition of knowledge and skills they are expected to learn, as determined by established levels or cut-scores of proficiency on State-approved tests, as they progress through their education.

**Smarter Balanced Assessment:** The Smarter Balanced assessments are a key part of measuring Nevada student progress in grades 3-8 towards success in college and career. The computer-adaptive format and online administration of the assessments provide meaningful feedback that teachers and parents can use to help students succeed. The assessments are aligned with the Nevada Academic Content Standards in ELA and mathematics. Results from SBAC are included on the Nevada Report Card.<sup>4</sup>

<sup>3</sup> [https://charterschools.nv.gov/uploadedFiles/CharterSchoolsnvgov/content/Families/Strategic%20Plan%202019\\_FINAL\\_ADA\(1\).pdf](https://charterschools.nv.gov/uploadedFiles/CharterSchoolsnvgov/content/Families/Strategic%20Plan%202019_FINAL_ADA(1).pdf)

<sup>4</sup> [http://www.doe.nv.gov/Assessments/Smarter\\_Balanced\\_Assessment\\_Consortium\\_\(SBAC\)/](http://www.doe.nv.gov/Assessments/Smarter_Balanced_Assessment_Consortium_(SBAC)/)

## **IX. Appendices**

[Appendix A - District Summaries](#)

[Appendix B - Definitions of Star Ratings](#)

[Appendix C - Stakeholder Input](#)

# *Appendix A:*

## *District Summaries*

*The analyses reflected in this appendix reflect the most recent data available: the 2018-19 Nevada School Performance Framework school star ratings data and 2020-21 enrollment data, both from the Nevada Department of Education.*

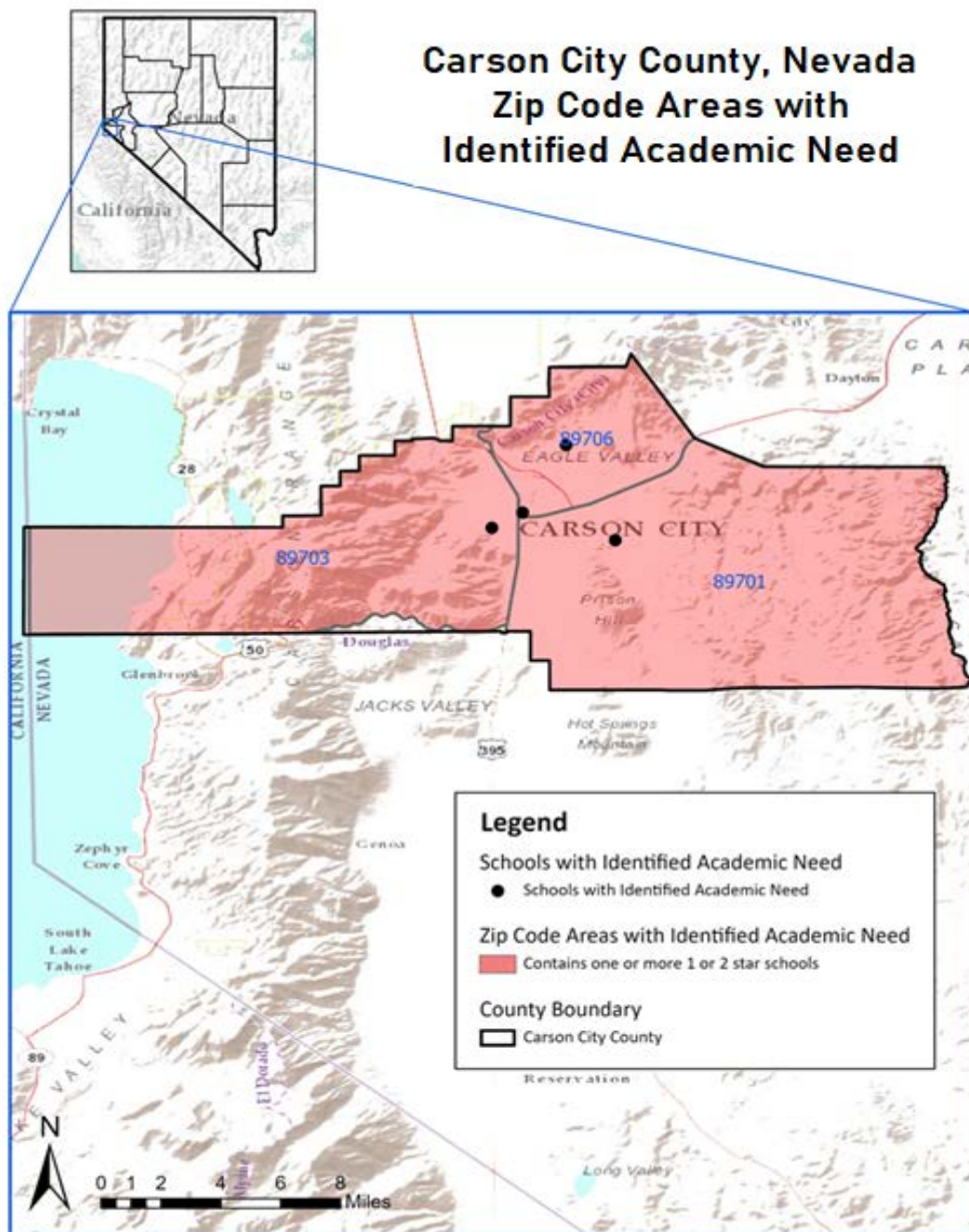
# District Snapshot

## Carson City School District

### Analysis of Zip Codes with 1- and 2-Star Schools

#### Summary

- The Carson City School District serves about 7,668 students in 11 schools across 3 zip codes; and
- In the district, there are 4 schools rated 1 or 2 stars across 3 zip codes that serve about 2,332 students, or 30.4% of students in the district.



# District Snapshot

## Carson City School District

### Analysis of Zip Codes with 1- and 2-Star Schools

#### Summary

- The Carson City School District serves about 7,668 students in 11 schools across 3 zip codes; and
- In the district, there are 4 schools rated 1 or 2 stars across 3 zip codes that serve about 2,332 students, or 30.4% of students in the district.

Zip Codes with 1- and 2-Star Schools								
Zip Code	October 1 2020 Enrollment	Total # Schools	# 1- or 2-Star Schools	1- or 2-Star School Enrollment	% Enrolled in 1- or 2-Star Schools	# 1- or 2-Star Elem. Schools	# 1- or 2-Star Middle Schools	# 1- or 2-Star High Schools
89701	4535	5	1	775	17.0	0	1	0
89703	2138	3	1	1102	51.5	0	1	0
89706	995	3	2	455	45.7	1	0	1

1- and 2-Star Schools								
School Name	Zip Code	Grades Served^	2018-19 NSPF Star Rating	2017-18 NSPF Star Rating	October 1 2020 Enrollment	% EL	% FRL	% IEP
Carson Montessori ES	89706	ES	2	2	287	n<10	17.8	7.3
Carson MS	89703	MS	2	3	1102	6.8	53.3	13.5
Eagle Valley MS	89701	MS	2	3	775	10.3	54.8	12.5
Pioneer HS	89706	HS	2	1	168	10.7	>95.0	14.9

Tables display zip codes and schools based on 2018-19 Nevada School Performance Framework (NSPF) star ratings. Enrollment is as of October 1, 2020.

^In general, elementary schools (ES) serve grades K-5, middle schools (MS) serve grades 6-8, and high schools (HS) serve grades 9-12.

To protect student privacy, rates for population sizes less than 10 are displayed as “n<10”, and enrollment rates less than 5% or greater than 95% are shown as <5.0 and >95.0, respectively.

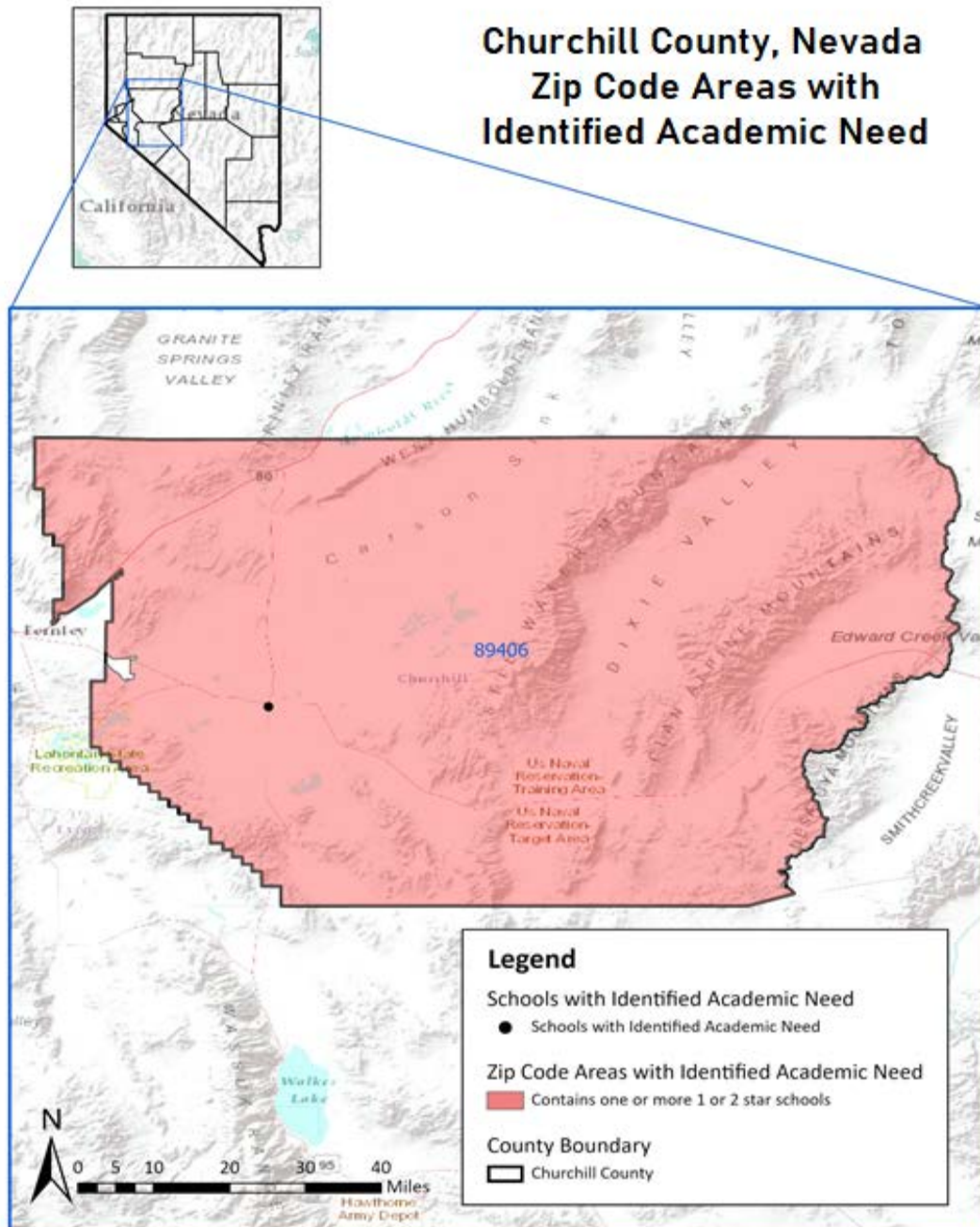
# District Snapshot

## Churchill County School District

### Analysis of Zip Codes with 1- and 2-Star Schools

#### Summary

- The Churchill County School District serves about 3,086 students in 5 schools across 1 zip code; and
- In the district, there is 1 school rated 1 or 2 stars in 1 zip code that serves about 757 students, or 24.5% of students in the district.





## District Snapshot

# Churchill County School District

## Analysis of Zip Codes with 1- and 2-Star Schools

### Summary

- The Churchill County School District serves about 3,086 students in 5 schools across 1 zip code; and
- In the district, there is 1 school rated 1 or 2 stars in 1 zip code that serves about 757 students, or 24.5% of students in the district.

Zip Codes with 1- and 2-Star Schools

Zip Code	Total Enrollment	Total # Schools	# 1- or 2-Star Schools	1- or 2-Star School Enrollment	% Enrolled in 1- or 2-Star Schools	# 1- or 2-Star Elem. Schools	# 1- or 2-Star Middle Schools	# 1- or 2-Star High Schools
89406	3086	5	1	757	24.5	0	1	0

1- and 2-Star Schools

School Name	Zip Code	Grades Served <sup>^</sup>	2018-19 NSPF Star Rating	2017-18 NSPF Star Rating	October 1 2020 Enrollment	% EL	% FRL	% IEP
Churchill MS	89406	MS	2	2	757	<5.0	>95.0	16.4

Tables display zip codes and schools based on 2018-19 Nevada School Performance Framework (NSPF) star ratings. Enrollment is as of October 1, 2020.

<sup>^</sup>In general, elementary schools (ES) serve grades K-5, middle schools (MS) serve grades 6-8, and high schools (HS) serve grades 9-12.

To protect student privacy, rates for population sizes less than 10 are displayed as “n<10”, and enrollment rates less than 5% or greater than 95% are shown as <5.0 and >95.0, respectively.

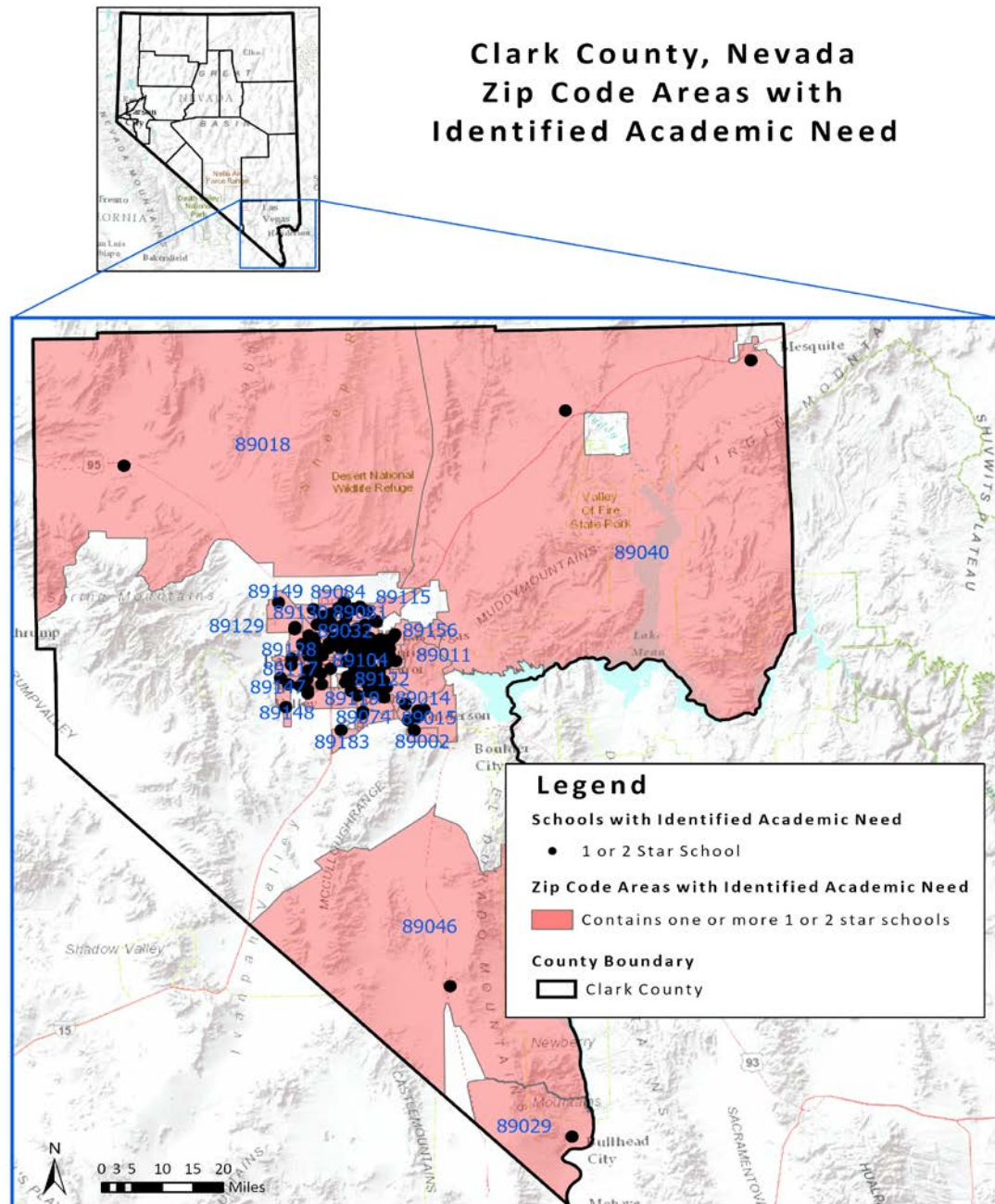
# District Snapshot

## Clark County School District

### Analysis of Zip Codes with 1- and 2-Star Schools

#### Summary

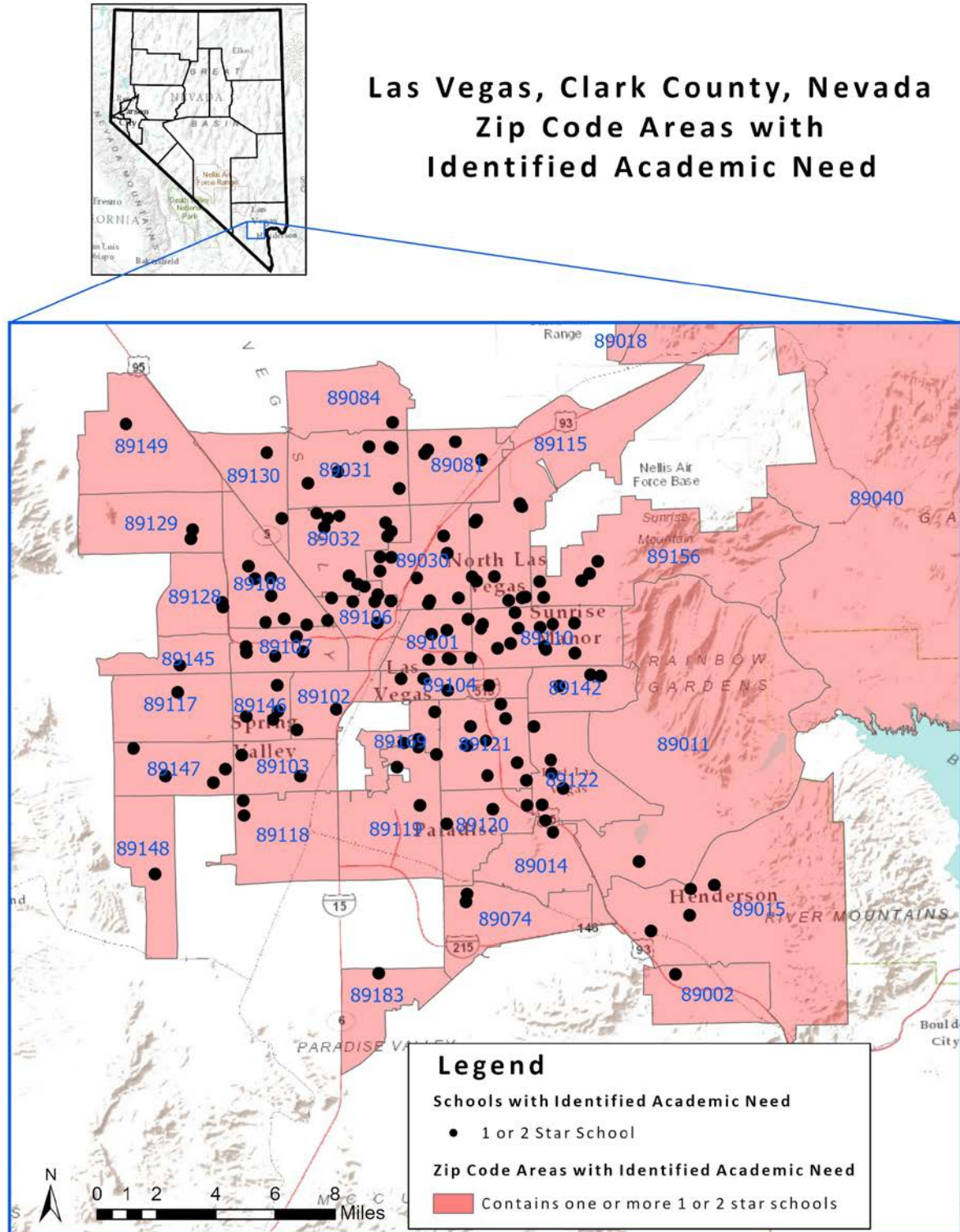
- The Clark County School District serves about 307,228 students in 388 schools across 65 zip codes; and
- In the district, there are 160 schools rated 1 or 2 stars across 42 zip codes that serve about 107,970 students, or 35.1% of students in the district.



# District Snapshot

## Clark County School District

### Analysis of Zip Codes with 1- and 2-Star Schools



# District Snapshot

## Clark County School District

### Analysis of Zip Codes with 1- and 2-Star Schools

#### Summary

- The Clark County School District serves about 307,228 students in 388 schools across 65 zip codes; and
- In the district, there are 160 schools rated 1 or 2 stars across 42 zip codes that serve about 107,970 students, or 35.1% of students in the district.

Zip Codes with 1- and 2-Star Schools								
Zip Code	Total Enrollment	Total # Schools	# 1- or 2-Star Schools	1- or 2-Star School Enrollment	% Enrolled in 1- or 2-Star Schools	# 1- or 2-Star Elem. Schools	# 1- or 2-Star Middle Schools	# 1- or 2-Star High Schools
89002	6120	7	1	533	8.7	1	0	0
89007	393	1	1	393	100.0	1	0	0
89011	1208	2	1	362	29.9	1	0	0
89014	6406	6	1	458	7.1	1	0	0
89015	6940	8	4	2642	38.0	2	2	0
89018	238	3	1	84	35.2	1	0	0
89025	120	1	1	120	100.0	1	0	0
89029	727	3	1	348	47.8	1	0	0
89030	9210	17	10	5182	56.2	6	2	2
89031	7587	9	6	3960	52.1	5	1	0
89032	10862	12	10	7470	68.7	6	3	1
89046	21	1	1	21	100.0	1	0	0
89074	4315	6	2	1010	23.4	2	0	0
89081	2980	4	4	2980	100.0	3	1	0
89084	6776	6	1	579	8.5	1	0	0
89101	10922	22	8	4531	41.4	6	2	0
89102	6246	4	2	2175	34.8	1	1	0
89103	3258	7	2	630	19.3	1	0	1
89104	5512	9	3	1919	34.8	3	0	0
89106	6483	12	8	3619	55.8	7	1	0
89107	10120	10	6	6931	68.4	3	2	1
89108	6163	9	7	4984	80.8	6	1	0
89110	14968	17	13	11823	78.9	7	2	4
89115	9218	13	10	7780	84.4	8	2	0
89117	1721	3	1	563	32.7	1	0	0
89118	2281	3	2	1736	76.1	1	1	0
89119	3127	5	3	1955	62.5	2	1	0
89120	7660	9	3	1954	25.5	2	1	0
89121	8189	14	9	5440	66.4	6	3	0
89122	3664	8	6	3638	99.2	4	1	1
89128	4056	4	2	1057	26.0	2	0	0
89129	5795	8	2	1447	24.9	1	1	0

Tables display zip codes and schools based on 2018-19 Nevada School Performance Framework (NSPF) star ratings. Enrollment is as of October 1, 2020.

^In general, elementary schools (ES) serve grades K-5, middle schools (MS) serve grades 6-8, and high schools (HS) serve grades 9-12.

To protect student privacy, rates for population sizes less than 10 are displayed as “n<10”, and enrollment rates less than 5% or greater than 95% are shown as <5.0 and >95.0, respectively.



# District Snapshot

## Clark County School District

### Analysis of Zip Codes with 1- and 2-Star Schools

#### Summary

- The Clark County School District serves about 307,228 students in 388 schools across 65 zip codes; and
- In the district, there are 160 schools rated 1 or 2 stars across 42 zip codes that serve about 107,970 students, or 35.1% of students in the district.

**Zip Codes with 1- and 2-Star Schools (continued)**

Zip Code	Total Enrollment	Total # Schools	# 1- or 2-Star Schools	1- or 2-Star School Enrollment	% Enrolled in 1- or 2-Star Schools	# 1- or 2-Star Elem. Schools	# 1- or 2-Star Middle Schools	# 1- or 2-Star High Schools
89130	3726	5	2	978	26.2	2	0	0
89142	9360	8	3	2857	30.5	2	1	0
89145	2568	3	1	470	18.3	1	0	0
89146	7121	9	4	2309	32.4	4	0	0
89147	7314	8	4	2868	39.2	3	1	0
89148	6472	7	1	666	10.2	1	0	0
89149	7950	10	1	974	12.2	0	1	0
89156	6308	6	5	3587	56.8	4	1	0
89169	4989	7	6	4318	86.5	3	1	2
89183	3907	5	1	619	15.8	1	0	0

**1- and 2-Star Schools**

School Name	Zip Code	Grades Served <sup>^</sup>	2018-19 NSPF Star Rating	2017-18 NSPF Star Rating	October 1 2020 Enrollment	% EL	% FRL	% IEP
100 Academy MS	89032	MS	2	2	163	9.8	>95.0	10.4
Adcock ES	89107	ES	2	2	495	33.9	>95.0	13.7
Antonello ES	89031	ES	1	3	493	14.2	>95.0	16.8
Bailey ES	89122	ES	2	1	587	16.2	>95.0	15.5
Bailey MS	89156	MS	1	1	1395	24.3	>95.0	11.7
Beckley ES	89121	ES	2	2	748	29.5	>95.0	12.0
Bell ES	89102	ES	2	1	731	30.1	>95.0	11.6
Bennett William ES	89029	ES	2	2	348	<5.0	>95.0	14.1
Booker ES	89106	ES	2	2	384	28.9	>95.0	15.6
Bowler Joseph ES	89007	ES	2	1	393	24.4	>95.0	15.8
Brinley MS	89108	MS	1	1	1033	23.6	>95.0	13.2
Brookman ES	89110	ES	2	4	592	25.7	>95.0	10.8
Brown JHS	89015	MS	2	2	1018	5.2	>95.0	13.0
Bruner ES	89032	ES	2	1	537	17.5	>95.0	14.7
Bunker ES	89108	ES	2	2	677	22.5	>95.0	15.5
Burk Horizon SW HS	89103	HS	1	1	29	n<10	0.0	0.0
Burkholder MS	89015	MS	2	3	605	5.3	>95.0	16.5
Cannon JHS	89120	MS	2	2	940	20.9	>95.0	15.3

Tables display zip codes and schools based on 2018-19 Nevada School Performance Framework (NSPF) star ratings. Enrollment is as of October 1, 2020.

<sup>^</sup>In general, elementary schools (ES) serve grades K-5, middle schools (MS) serve grades 6-8, and high schools (HS) serve grades 9-12.

To protect student privacy, rates for population sizes less than 10 are displayed as "n<10", and enrollment rates less than 5% or greater than 95% are shown as <5.0 and >95.0, respectively.

# District Snapshot

## Clark County School District

### Analysis of Zip Codes with 1- and 2-Star Schools

#### Summary

- The Clark County School District serves about 307,228 students in 388 schools across 65 zip codes; and
- In the district, there are 160 schools rated 1 or 2 stars across 42 zip codes that serve about 107,970 students, or 35.1% of students in the district.

1- and 2-Star Schools (continued)								
School Name	Zip Code	Grades Served <sup>^</sup>	2018-19 NSPF Star Rating	2017-18 NSPF Star Rating	October 1 2020 Enrollment	% EL	% FRL	% IEP
Carl ES	89130	ES	2	2	692	6.8	>95.0	12.3
Carson ES	89106	ES	2	2	333	22.8	>95.0	11.4
Cashman MS	89102	MS	2	2	1444	24.2	>95.0	12.0
Cheyenne HS	89032	HS	2	2	1953	17.5	>95.0	17.5
Cortney JHS	89122	MS	2	2	1193	19.8	>95.0	17.1
Cowan Sunset SE HS	89122	HS	1	Not Rated	17	n<10	0.0	n<10
Cox C ES	89115	ES	2	2	705	32.2	>95.0	11.9
Cox D ES	89074	ES	2	3	506	8.1	>95.0	11.1
Cozine ES	89031	ES	2	3	642	17.4	>95.0	17.8
Craig ES	89030	ES	1	2	605	31.4	>95.0	12.1
Crestwood ES	89104	ES	2	4	625	44.2	>95.0	9.4
Culley ES	89108	ES	2	1	717	43.0	>95.0	14.9
Cunningham ES	89122	ES	2	1	737	16.7	>95.0	9.6
Dearing ES	89121	ES	2	3	810	26.8	>95.0	14.4
Decker ES	89103	ES	2	2	601	30.6	>95.0	11.5
Delta Charter MS	89030	MS	2	2	228	8.3	>95.0	11.8
Delta Charter HS	89030	HS	1	1	506	12.8	>95.0	15.6
Derfelt ES	89117	ES	2	3	563	13.9	>95.0	13.5
Desert Pines HS	89110	HS	2	2	3102	29.6	>95.0	13.2
Desert Rose ALT HS	89030	HS	1	1	150	17.3	>95.0	22.7
Detwiler ES	89106	ES	2	2	603	23.4	>95.0	10.3
Dickens ES	89081	ES	2	3	767	8.6	>95.0	12.1
Diskin ES	89147	ES	2	4	562	30.4	>95.0	13.3
Duncan ES	89084	ES	1	1	579	5.7	>95.0	14.5
Earl I ES	89110	ES	2	2	664	39.5	>95.0	12.7
Earl M ES	89118	ES	2	3	505	20.8	>95.0	14.3
Edwards ES	89110	ES	2	3	530	41.1	>95.0	10.8
Eldorado HS	89110	HS	2	2	2004	24.8	>95.0	11.6
Elizondo ES	89031	ES	1	3	620	16.9	>95.0	14.7
Escobedo MS	89149	MS	2	2	974	<5.0	>95.0	12.1
Ferron ES	89121	ES	2	3	539	20.4	>95.0	12.1
Findlay MS	89031	MS	1	2	1180	12.1	>95.0	14.1

Tables display zip codes and schools based on 2018-19 Nevada School Performance Framework (NSPF) star ratings. Enrollment is as of October 1, 2020.

<sup>^</sup>In general, elementary schools (ES) serve grades K-5, middle schools (MS) serve grades 6-8, and high schools (HS) serve grades 9-12.

To protect student privacy, rates for population sizes less than 10 are displayed as "n<10", and enrollment rates less than 5% or greater than 95% are shown as <5.0 and >95.0, respectively.

# District Snapshot

## Clark County School District

### Analysis of Zip Codes with 1- and 2-Star Schools

#### Summary

- The Clark County School District serves about 307,228 students in 388 schools across 65 zip codes; and
- In the district, there are 160 schools rated 1 or 2 stars across 42 zip codes that serve about 107,970 students, or 35.1% of students in the district.

1- and 2-Star Schools (continued)								
School Name	Zip Code	Grades Served <sup>^</sup>	2018-19 NSPF Star Rating	2017-18 NSPF Star Rating	October 1 2020 Enrollment	% EL	% FRL	% IEP
Fitzgerald ES	89030	ES	2	2	349	21.5	>95.0	15.2
Galloway ES	89002	ES	2	2	533	<5.0	>95.0	14.4
Garside MS	89107	MS	2	2	1240	22.7	>95.0	12.6
Gene Ward ES	89119	ES	1	2	594	34.7	>95.0	14.8
Gibson MS	89107	MS	2	3	1264	24.4	>95.0	11.3
Gilbert ES	89032	ES	2	4	508	10.8	>95.0	8.5
Global Community HS	89110	HS	2	1	148	>95.0	>95.0	0.0
Gray ES	89146	ES	2	2	435	24.4	>95.0	14.3
Griffith ES	89107	ES	2	1	577	34.1	>95.0	11.1
Hancock ES	89146	ES	1	1	522	20.9	>95.0	13.2
Harmon ES	89120	ES	1	2	579	28.5	>95.0	13.5
Harney MS	89142	MS	2	2	1609	14.5	>95.0	11.3
Harris ES	89121	ES	2	1	621	25.9	>95.0	16.7
Hayes ES	89147	ES	2	3	498	12.2	>95.0	17.7
Heard ES	89115	ES	2	2	724	32.5	>95.0	7.6
Herr ES	89156	ES	1	1	637	24.6	>95.0	8.5
Hewetson ES	89101	ES	2	2	748	43.3	>95.0	10.6
Hickey ES	89156	ES	2	2	667	31.2	>95.0	9.3
Hinman ES	89011	ES	2	2	362	9.1	>95.0	27.6
Hollingsworth ES	89101	ES	1	1	502	42.4	>95.0	11.2
Hummel ES	89183	ES	2	2	619	8.6	>95.0	12.9
Indian Springs ES	89018	ES	1	2	84	n<10	>95.0	n<10
Iverson ES	89142	ES	2	3	555	19.3	>95.0	10.5
Jacobson ES	89145	ES	2	2	470	11.9	>95.0	7.2
Jeffers ES	89115	ES	2	2	637	42.4	>95.0	13.3
Johnston MS	89081	MS	2	1	1279	9.6	>95.0	16.7
Kahre ES	89129	ES	2	2	398	5.8	>95.0	13.3
Katz ES	89128	ES	1	2	584	16.6	>95.0	11.8
Keller ES	89110	ES	2	1	524	37.8	>95.0	12.6
Keller MS	89110	MS	1	2	1376	26.1	>95.0	12.4
Kelly ES	89106	ES	1	2	328	7.3	>95.0	17.7
Kim ES	89147	ES	2	2	423	18.0	>95.0	18.9

Tables display zip codes and schools based on 2018-19 Nevada School Performance Framework (NSPF) star ratings. Enrollment is as of October 1, 2020.

<sup>^</sup>In general, elementary schools (ES) serve grades K-5, middle schools (MS) serve grades 6-8, and high schools (HS) serve grades 9-12.

To protect student privacy, rates for population sizes less than 10 are displayed as "n<10", and enrollment rates less than 5% or greater than 95% are shown as <5.0 and >95.0, respectively.

# District Snapshot

## Clark County School District

### Analysis of Zip Codes with 1- and 2-Star Schools

#### Summary

- The Clark County School District serves about 307,228 students in 388 schools across 65 zip codes; and
- In the district, there are 160 schools rated 1 or 2 stars across 42 zip codes that serve about 107,970 students, or 35.1% of students in the district.

1- and 2-Star Schools (continued)								
School Name	Zip Code	Grades Served <sup>^</sup>	2018-19 NSPF Star Rating	2017-18 NSPF Star Rating	October 1 2020 Enrollment	% EL	% FRL	% IEP
King Martin ES	89156	ES	2	1	383	27.2	>95.0	14.1
Lawrence JHS	89147	MS	2	3	1385	11.4	>95.0	11.2
Lincoln ES	89030	ES	2	2	656	43.1	>95.0	9.8
Long ES	89104	ES	1	1	691	30.2	>95.0	8.0
Lowman ES	89115	ES	1	1	697	17.1	>95.0	13.9
Lunt ES	89101	ES	2	2	517	47.4	>95.0	11.6
Lynch ES	89115	ES	1	1	523	35.2	>95.0	7.1
Mack MS	89121	MS	2	1	1220	28.4	>95.0	13.4
Manch ES	89115	ES	1	1	777	10.9	>95.0	10.6
Martin MS	89101	MS	2	2	1498	25.1	>95.0	10.5
McCall ES	89030	ES	1	1	304	35.9	>95.0	10.5
McMillan ES	89128	ES	2	3	473	14.4	>95.0	16.1
McWilliams ES	89108	ES	2	2	681	41.3	>95.0	14.1
Mendoza ES	89142	ES	2	2	693	32.6	>95.0	12.4
Miley Achvmt ES	89101	ES	1	Not Rated	31	n<10	>95.0	90.3
Miley Achvmt MS	89101	MS	1	Not Rated	45	n<10	>95.0	91.1
Miller John ES	89121	ES	1	Not Rated	39	n<10	>95.0	>95.0
Miller John MS	89121	MS	1	Not Rated	38	n<10	>95.0	>95.0
Molasky JHS	89129	MS	1	2	1049	12.2	>95.0	13.8
Monaco MS	89115	MS	1	1	1253	28.6	>95.0	13.6
Moore ES	89110	ES	1	1	592	35.5	>95.0	12.5
Morris Sunset HS	89110	HS	1	1	64	42.2	0.0	0.0
Mountain View ES	89156	ES	2	1	505	21.8	>95.0	11.3
One Hundred Acad ES	89032	ES	2	1	352	9.4	>95.0	5.4
Orr MS	89119	MS	2	1	931	24.7	>95.0	14.3
Paradise ES	89119	ES	2	2	430	28.1	>95.0	12.8
Park ES	89104	ES	2	2	603	30.8	>95.0	13.8
Parson ES	89130	ES	2	1	286	18.9	>95.0	15.4
Perkins C ES	89032	ES	1	2	523	16.6	>95.0	18.9
Perkins U ES	89025	ES	2	2	120	n<10	>95.0	17.5
Petersen ES	89169	ES	1	1	793	28.8	>95.0	12.6
Priest ES	89032	ES	2	2	657	19.2	>95.0	14.3

Tables display zip codes and schools based on 2018-19 Nevada School Performance Framework (NSPF) star ratings. Enrollment is as of October 1, 2020.

<sup>^</sup>In general, elementary schools (ES) serve grades K-5, middle schools (MS) serve grades 6-8, and high schools (HS) serve grades 9-12.

To protect student privacy, rates for population sizes less than 10 are displayed as "n<10", and enrollment rates less than 5% or greater than 95% are shown as <5.0 and >95.0, respectively.



# District Snapshot

## Clark County School District

### Analysis of Zip Codes with 1- and 2-Star Schools

#### Summary

- The Clark County School District serves about 307,228 students in 388 schools across 65 zip codes; and
- In the district, there are 160 schools rated 1 or 2 stars across 42 zip codes that serve about 107,970 students, or 35.1% of students in the district.

1- and 2-Star Schools (continued)								
School Name	Zip Code	Grades Served <sup>^</sup>	2018-19 NSPF Star Rating	2017-18 NSPF Star Rating	October 1 2020 Enrollment	% EL	% FRL	% IEP
Red Rock ES	89107	ES	1	1	640	29.7	>95.0	16.9
Reed ES	89108	ES	2	1	670	25.7	>95.0	12.8
Reid ES	89046	ES	1	Not Rated	21	n<10	>95.0	n<10
Roberts ES	89074	ES	2	1	504	8.3	>95.0	12.1
Robison MS	89110	MS	2	2	1129	28.2	>95.0	12.8
Ronnow ES	89101	ES	2	2	592	41.9	>95.0	10.0
Ronzone ES	89108	ES	2	2	718	35.5	>95.0	10.9
Roundy ES	89146	ES	2	3	572	42.8	>95.0	8.7
Rundle ES	89110	ES	2	1	630	31.3	>95.0	11.4
Sawyer MS	89118	MS	2	3	1231	16.5	>95.0	12.0
Scott ES	89081	ES	1	1	535	13.6	>95.0	14.8
Sedway MS	89032	MS	1	1	1216	21.5	>95.0	13.6
Sewell ES	89015	ES	2	3	529	6.6	>95.0	19.8
Smith Hal ES	89122	ES	1	1	707	15.3	>95.0	13.3
Smith MS	89030	MS	1	2	1083	29.7	>95.0	12.1
Squires ES	89030	ES	2	3	672	45.1	>95.0	12.1
Stanford ES	89110	ES	2	2	468	31.2	>95.0	10.3
Stewart ES	89169	ES	1	Not Rated	16	n<10	>95.0	>95.0
Stewart ES	89169	MS	1	Not Rated	25	n<10	>95.0	>95.0
Stewart ES	89169	HS	1	Not Rated	55	34.5	>95.0	>95.0
Sunrise Acres ES	89101	ES	2	3	598	44.6	>95.0	13.5
Swainston MS	89032	MS	2	3	1098	16.0	>95.0	16.8
Tanaka ES	89148	ES	2	2	666	9.6	>95.0	14.6
Tartan ES	89081	ES	1	1	399	10.0	>95.0	18.8
Tate ES	89115	ES	2	3	703	30.3	>95.0	8.0
Taylor R ES	89015	ES	1	1	490	5.9	>95.0	20.2
Thomas ES	89169	ES	1	2	700	31.0	>95.0	10.9
Thorpe ES	89014	ES	2	2	458	10.7	>95.0	10.5
Tomiyasu ES	89120	ES	2	2	435	19.3	>95.0	12.9
Twin Lakes ES	89108	ES	2	2	488	41.0	>95.0	10.5
Ullom ES	89121	ES	2	2	568	32.4	>95.0	12.1
Valley HS	89169	HS	2	2	2729	26.6	>95.0	11.1

Tables display zip codes and schools based on 2018-19 Nevada School Performance Framework (NSPF) star ratings. Enrollment is as of October 1, 2020.

<sup>^</sup>In general, elementary schools (ES) serve grades K-5, middle schools (MS) serve grades 6-8, and high schools (HS) serve grades 9-12.

To protect student privacy, rates for population sizes less than 10 are displayed as "n<10", and enrollment rates less than 5% or greater than 95% are shown as <5.0 and >95.0, respectively.

# District Snapshot

## Clark County School District

### Analysis of Zip Codes with 1- and 2-Star Schools

#### Summary

- The Clark County School District serves about 307,228 students in 388 schools across 65 zip codes; and
- In the district, there are 160 schools rated 1 or 2 stars across 42 zip codes that serve about 107,970 students, or 35.1% of students in the district.

1- and 2-Star Schools (continued)								
School Name	Zip Code	Grades Served^	2018-19 NSPF Star Rating	2017-18 NSPF Star Rating	October 1 2020 Enrollment	% EL	% FRL	% IEP
Von Tobel MS	89115	MS	2	1	1149	25.1	>95.0	13.9
Watson ES	89031	ES	2	1	599	13.0	>95.0	14.4
West Prep ES	89106	ES	2	3	401	36.7	>95.0	<5.0
West Prep JSHS	89106	MS	1	1	1261	21.7	>95.0	17.6
Western HS	89107	HS	2	2	2715	30.3	>95.0	14.3
Whitney ES	89122	ES	1	1	397	17.6	>95.0	15.4
Wilhelm ES	89032	ES	1	2	463	16.2	>95.0	13.0
Williams T ES	89030	ES	2	3	629	44.5	>95.0	11.1
Williams W ES	89106	ES	1	1	275	7.6	>95.0	14.9
Wolfe ES	89031	ES	2	1	426	17.1	>95.0	17.4
Woodbury MS	89121	MS	1	2	857	24.5	>95.0	16.5
Woolley ES	89115	ES	2	2	612	34.8	>95.0	8.8
Wynn ES	89146	ES	2	1	780	43.8	>95.0	11.4

Tables display zip codes and schools based on 2018-19 Nevada School Performance Framework (NSPF) star ratings. Enrollment is as of October 1, 2020.

^In general, elementary schools (ES) serve grades K-5, middle schools (MS) serve grades 6-8, and high schools (HS) serve grades 9-12.

To protect student privacy, rates for population sizes less than 10 are displayed as “n<10”, and enrollment rates less than 5% or greater than 95% are shown as <5.0 and >95.0, respectively.

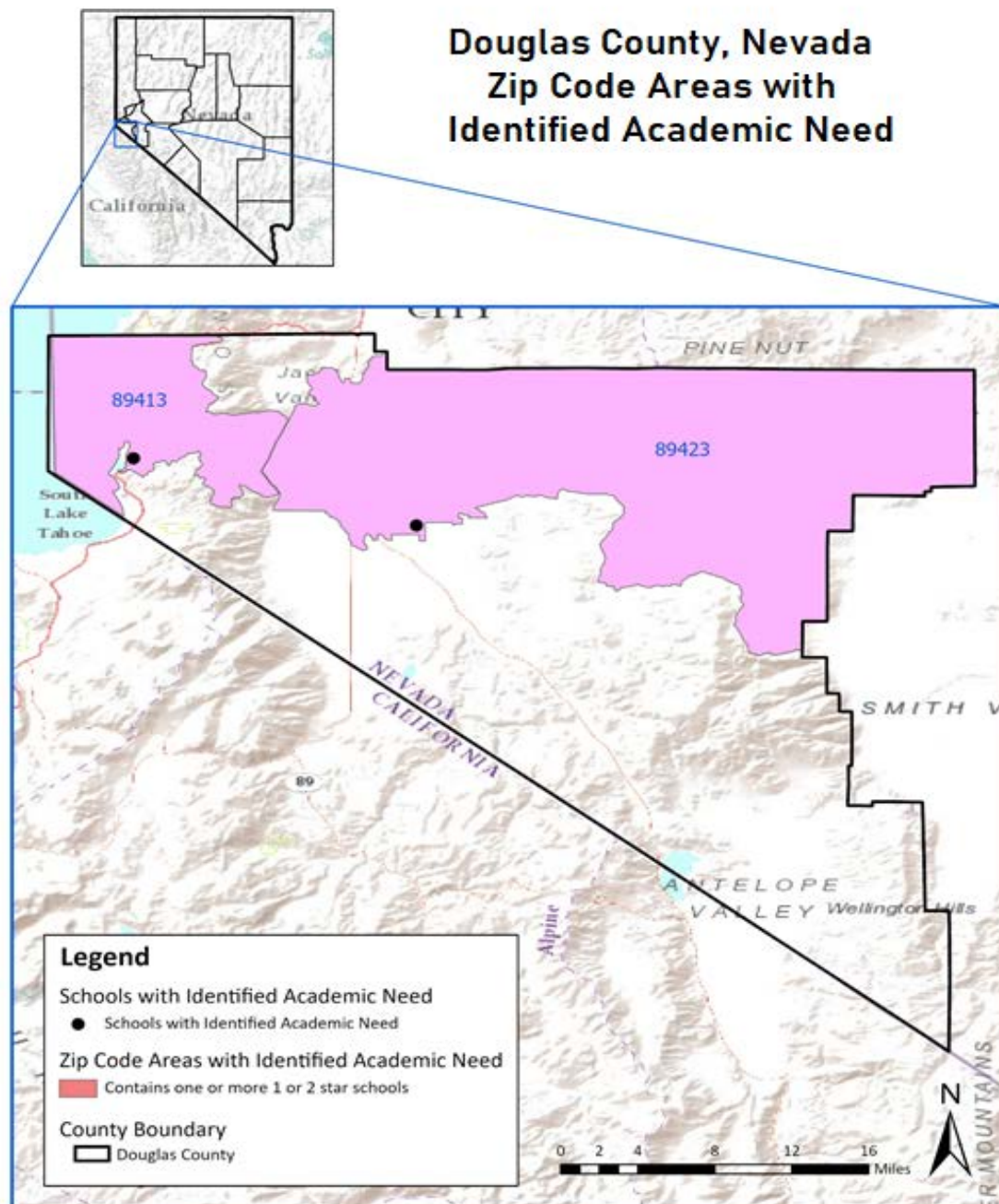
## District Snapshot

# Douglas County School District

## Analysis of Zip Codes with 1- and 2-Star Schools

### Summary

- The Douglas County School District serves about 5,281 students in 20 schools across 6 zip codes; and
- In the district, there are 2 schools rated 1 or 2 stars across 2 zip codes that serve about 87 students, or 1.6% of students in the district.



# District Snapshot

## Douglas County School District

### Analysis of Zip Codes with 1- and 2-Star Schools

#### Summary

- The Douglas County School District serves about 5,281 students in 20 schools across 6 zip codes; and
- In the district, there are 2 schools rated 1 or 2 stars across 2 zip codes that serve about 87 students, or 1.6% of students in the district.

Zip Codes with 1- and 2-Star Schools								
Zip Code	Total Enrollment	Total # Schools	# 1- or 2-Star Schools	1- or 2-Star School Enrollment	% Enrolled in 1- or 2-Star Schools	# 1- or 2-Star Elem. Schools	# 1- or 2-Star Middle Schools	# 1- or 2-Star High Schools
89413	107	2	1	34	31.7	0	1	0
89423	2841	9	1	53	1.8	0	0	1

1- and 2-Star Schools								
School Name	Zip Code	Grades Served^	2018-19 NSPF Star Rating	2017-18 NSPF Star Rating	October 1 2020 Enrollment	% EL	% FRL	% IEP
Aspire HS	89423	HS	1	2	53	0.0	45.3	n<10
Whittell MS	89413	MS	2	3	34	n<10	41.2	n<10

Tables display zip codes and schools based on 2018-19 Nevada School Performance Framework (NSPF) star ratings. Enrollment is as of October 1, 2020.

^In general, elementary schools (ES) serve grades K-5, middle schools (MS) serve grades 6-8, and high schools (HS) serve grades 9-12.

To protect student privacy, rates for population sizes less than 10 are displayed as “n<10”, and enrollment rates less than 5% or greater than 95% are shown as <5.0 and >95.0, respectively.

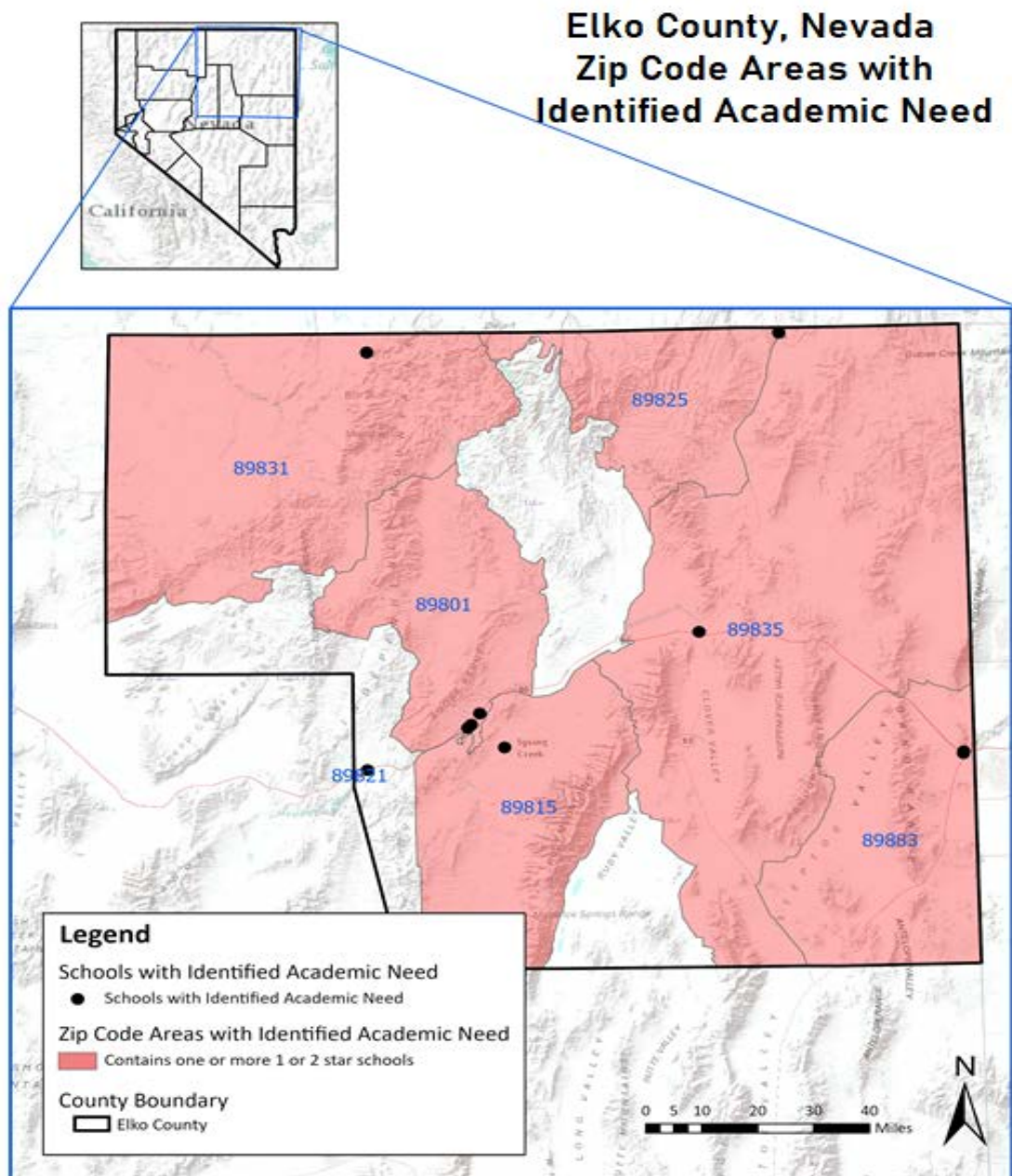
# District Snapshot

## Elko County School District

### Analysis of Zip Codes with 1- and 2-Star Schools

#### Summary

- The Elko County School District serves about 9,391 students in 36 schools across 9 zip codes; and
- In the district, there are 11 schools rated 1 or 2 stars across 7 zip codes that serve about 2,423 students, or 25.8% of students in the district.



Due to discrepancies in postal locations versus geographical zip codes in rural zip boundaries, 89821 on this map is 89822 in the following tables, while 89831 on this map is 89832 in the following tables.

# District Snapshot

## Elko County School District

### Analysis of Zip Codes with 1- and 2-Star Schools

#### Summary

- The Elko County School District serves about 9,391 students in 36 schools across 9 zip codes; and
- In the district, there are 11 schools rated 1 or 2 stars across 7 zip codes that serve about 2,423 students, or 25.8% of students in the district.

Zip Codes with 1- and 2-Star Schools								
Zip Code	Total Enrollment	Total # Schools	# 1- or 2-Star Schools	1- or 2-Star School Enrollment	% Enrolled in 1- or 2-Star Schools	# 1- or 2-Star Elem. Schools	# 1- or 2-Star Middle Schools	# 1- or 2-Star High Schools
89801	4792	10	2	894	18.6	2	0	0
89815	2581	7	1	361	13.9	1	0	0
89822	299	3	2	227	75.9	1	1	0
89825	134	3	1	64	47.7	1	0	0
89832	297	3	2	212	71.3	1	1	0
89835	335	3	1	49	14.6	0	1	0
89883	922	3	2	616	66.8	1	1	0

1- and 2-Star Schools								
School Name	Zip Code	Grades Served^	2018-19 NSPF Star Rating	2017-18 NSPF Star Rating	October 1 2020 Enrollment	% EL	% FRL	% IEP
Carlin ES	89822	ES	2	2	175	0.0	49.7	16.6
Carlin JHS	89822	MS	1	2	52	0.0	36.5	n<10
Elko Grammar ES	89801	ES	2	3	224	11.6	47.8	17.4
Flagview Intermediate ES	89801	ES	2	2	670	7.2	42.5	13.0
Jackpot ES	89825	ES	2	2	64	26.6	71.9	n<10
Owyhee ES	89832	ES	1	1	164	6.7	>95.0	14.0
Owyhee JHS	89832	MS	1	1	48	n<10	>95.0	22.9
Sage ES	89815	ES	1	2	361	<5.0	43.5	12.7
W Wendover ES	89883	ES	2	2	459	26.4	74.9	9.4
W Wendover MS	89883	MS	2	2	157	12.1	72.6	9.6
Wells JHS	89835	MS	2	3	49	n<10	51.0	n<10

Tables display zip codes and schools based on 2018-19 Nevada School Performance Framework (NSPF) star ratings. Enrollment is as of October 1, 2020.

^In general, elementary schools (ES) serve grades K-5, middle schools (MS) serve grades 6-8, and high schools (HS) serve grades 9-12.

To protect student privacy, rates for population sizes less than 10 are displayed as "n<10", and enrollment rates less than 5% or greater than 95% are shown as <5.0 and >95.0, respectively.



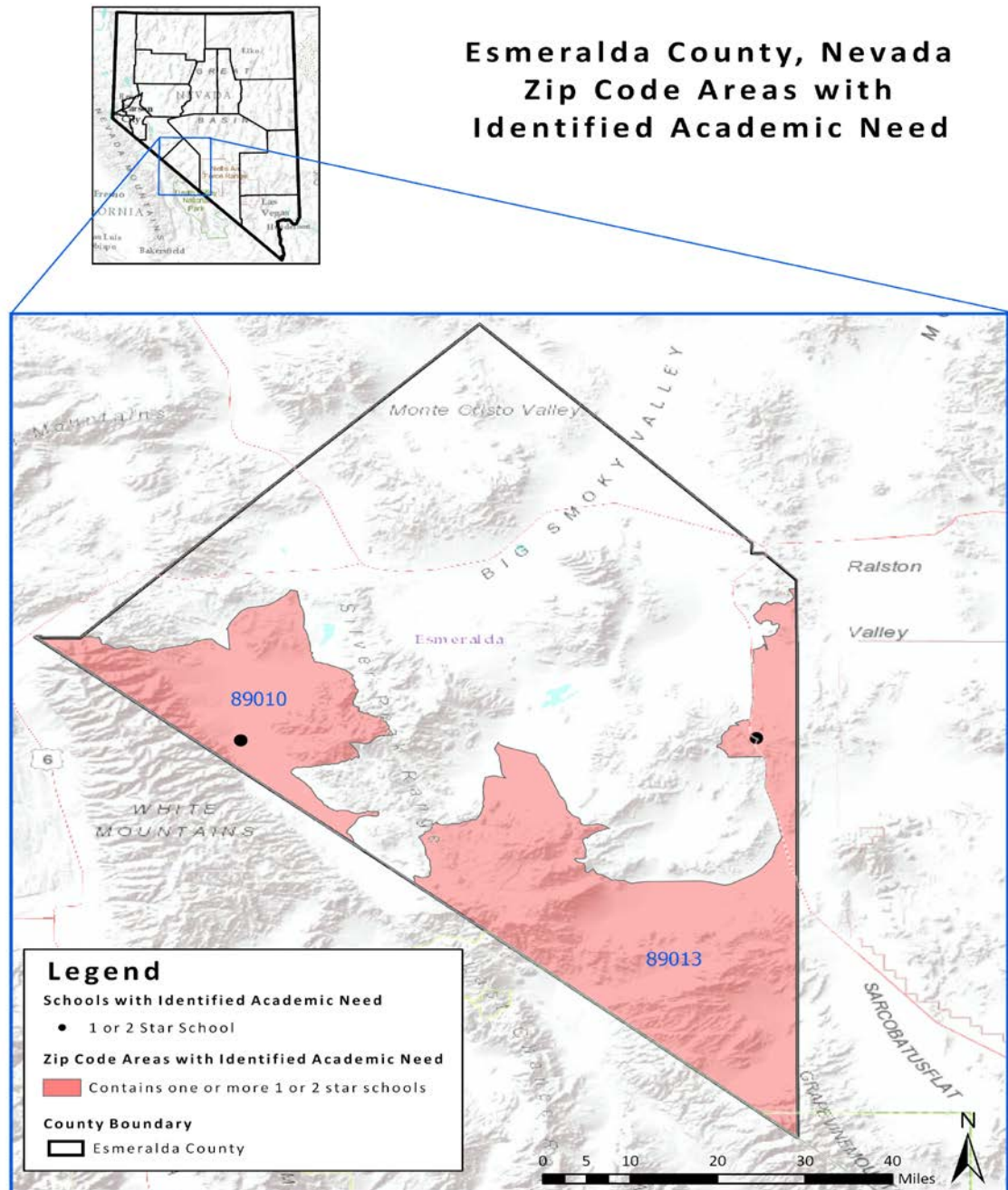
# District Snapshot

## Esmeralda County School District

### Analysis of Zip Codes with 1- and 2-Star Schools

#### Summary

- The Esmeralda County School District serves about 92 students in 7 schools across 3 zip codes; and
- In the district, there are 2 schools rated 1 or 2 stars across 2 zip codes that serve about 39 students, or 42.3% of students in the district.



# District Snapshot

## Esmeralda County School District

### Analysis of Zip Codes with 1- and 2-Star Schools

#### Summary

- The Esmeralda County School District serves about 92 students in 7 schools across 3 zip codes; and
- In the district, there are 2 schools rated 1 or 2 stars across 2 zip codes that serve about 39 students, or 42.3% of students in the district.

**Zip Codes with 1- and 2-Star Schools**

Zip Code	Total Enrollment	Total # Schools	# 1- or 2-Star Schools	1- or 2-Star School Enrollment	% Enrolled in 1- or 2-Star Schools	# 1- or 2-Star Elem. Schools	# 1- or 2-Star Middle Schools	# 1- or 2-Star High Schools
89010	52	3	1	28	53.8	1	0	0
89013	35	2	1	11	31.4	0	1	0

**1- and 2-Star Schools**

School Name	Zip Code	Grades Served^	2018-19 NSPF Star Rating	2017-18 NSPF Star Rating	October 1 2020 Enrollment	% EL	% FRL	% IEP
Dyer ES	89010	ES	1	1	28	n<10	>95.0	n<10
Goldfield ES	89013	MS	1	Not Rated	11	0.0	>95.0	n<10

Tables display zip codes and schools based on 2018-19 Nevada School Performance Framework (NSPF) star ratings. Enrollment is as of October 1, 2020.

^In general, elementary schools (ES) serve grades K-5, middle schools (MS) serve grades 6-8, and high schools (HS) serve grades 9-12.

To protect student privacy, rates for population sizes less than 10 are displayed as “n<10”, and enrollment rates less than 5% or greater than 95% are shown as <5.0 and >95.0, respectively.



# District Snapshot

## Eureka County School District

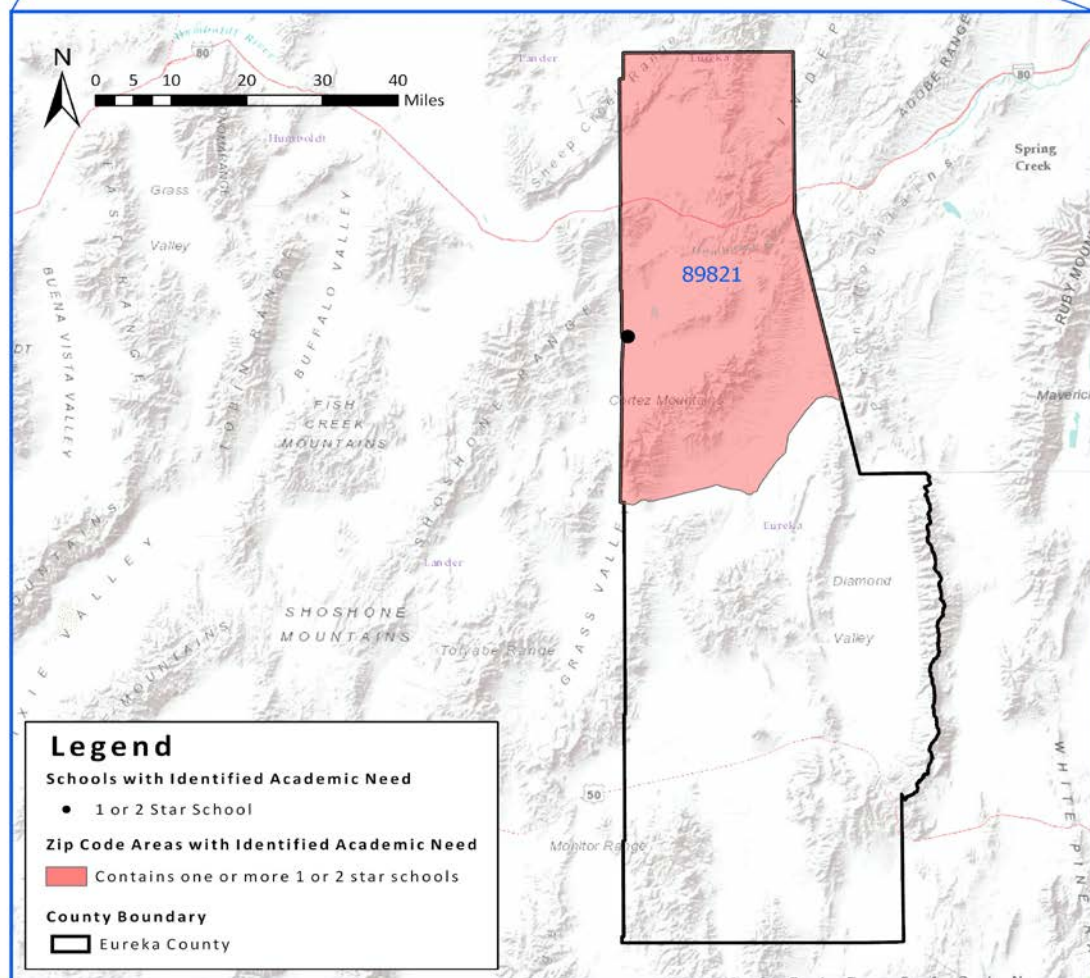
### Analysis of Zip Codes with 1- and 2-Star Schools

#### Summary

- The Eureka County School District serves about 312 students in 4 schools across 2 zip codes; and
- In the district, there is 1 school rated 1 or 2 stars in 1 zip code that serves about 34 students, or 10.8% of students in the district.



#### Eureka County, Nevada Zip Code Areas with Identified Academic Need



# District Snapshot

## Eureka County School District

### Analysis of Zip Codes with 1- and 2-Star Schools

#### Summary

- The Eureka County School District serves about 312 students in 4 schools across 2 zip codes; and
- In the district, there is 1 school rated 1 or 2 stars in 1 zip code that serves about 34 students, or 10.8% of students in the district.

**Zip Codes with 1- and 2-Star Schools**

Zip Code	Total Enrollment	Total # Schools	# 1- or 2-Star Schools	1- or 2-Star School Enrollment	% Enrolled in 1- or 2-Star Schools	# 1- or 2-Star Elem. Schools	# 1- or 2-Star Middle Schools	# 1- or 2-Star High Schools
89821	34	1	1	34	100.0	1	0	0

**1- and 2-Star Schools**

School Name	Zip Code	Grades Served <sup>^</sup>	2018-19 NSPF Star Rating	2017-18 NSPF Star Rating	October 1 2020 Enrollment	% EL	% FRL	% IEP
Crescent Valley ES	89821	ES	2	3	34	0.0	50.0	n<10

Tables display zip codes and schools based on 2018-19 Nevada School Performance Framework (NSPF) star ratings. Enrollment is as of October 1, 2020.

<sup>^</sup>In general, elementary schools (ES) serve grades K-5, middle schools (MS) serve grades 6-8, and high schools (HS) serve grades 9-12.

To protect student privacy, rates for population sizes less than 10 are displayed as “n<10”, and enrollment rates less than 5% or greater than 95% are shown as <5.0 and >95.0, respectively.

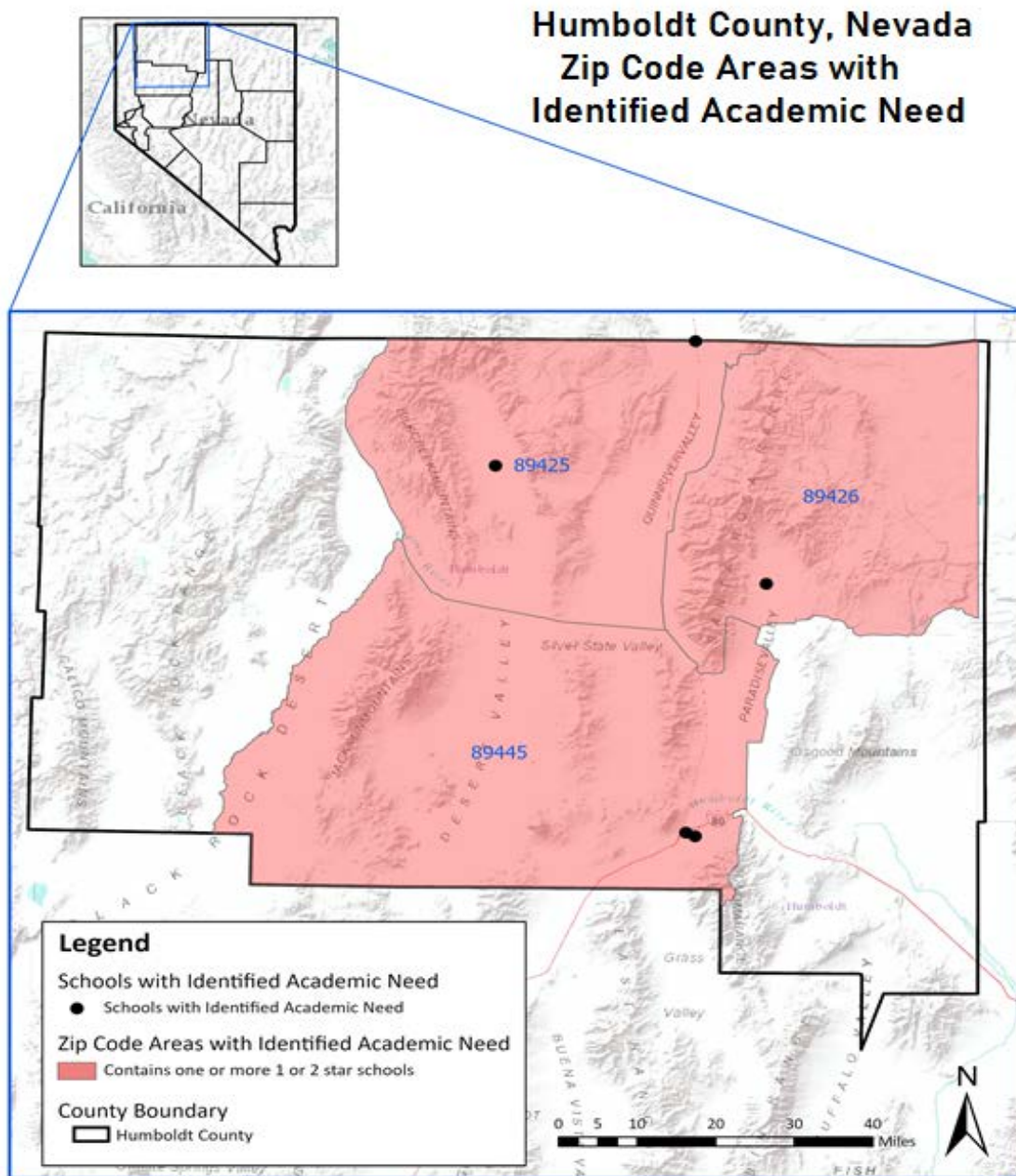
## District Snapshot

# Humboldt County School District

## Analysis of Zip Codes with 1- and 2-Star Schools

### Summary

- The Humboldt County School District serves about 3,195 students in 17 schools across 5 zip codes; and
- In the district, there are 6 schools rated 1 or 2 stars across 4 zip codes that serve about 1,084 students, or 33.9% of students in the district.



# District Snapshot

## Humboldt County School District

### Analysis of Zip Codes with 1- and 2-Star Schools

#### Summary

- The Humboldt County School District serves about 3,195 students in 17 schools across 5 zip codes; and
- In the district, there are 6 schools rated 1 or 2 stars across 4 zip codes that serve about 1,084 students, or 33.9% of students in the district.

Zip Codes with 1- and 2-Star Schools								
Zip Code	Total Enrollment	Total # Schools	# 1- or 2-Star Schools	1- or 2-Star School Enrollment	% Enrolled in 1- or 2-Star Schools	# 1- or 2-Star Elem. Schools	# 1- or 2-Star Middle Schools	# 1- or 2-Star High Schools
89421	104	3	2	71	68.2	1	1	0
89425	45	4	1	25	55.5	1	0	0
89426	29	2	1	23	79.3	1	0	0
89445	3013	6	2	965	32.0	1	1	0

1- and 2-Star Schools								
School Name	Zip Code	Grades Served^	2018-19 NSPF Star Rating	2017-18 NSPF Star Rating	October 1 2020 Enrollment	% EL	% FRL	% IEP
French Ford MS	89445	ES	2	1	459	8.9	52.3	11.8
McDermitt ES	89421	ES	1	1	54	0.0	>95.0	18.5
McDermitt JHS	89421	MS	1	1	17	0.0	>95.0	n<10
Orovada ES	89425	ES	2	Not Rated	25	n<10	40.0	n<10
Paradise Valley ES	89426	ES	2	Not Rated	23	n<10	52.2	n<10
Winnemucca JHS	89445	MS	2	2	506	9.7	50.0	15.6

Tables display zip codes and schools based on 2018-19 Nevada School Performance Framework (NSPF) star ratings. Enrollment is as of October 1, 2020.

^In general, elementary schools (ES) serve grades K-5, middle schools (MS) serve grades 6-8, and high schools (HS) serve grades 9-12.

To protect student privacy, rates for population sizes less than 10 are displayed as “n<10”, and enrollment rates less than 5% or greater than 95% are shown as <5.0 and >95.0, respectively.



# District Snapshot

## Lander County School District

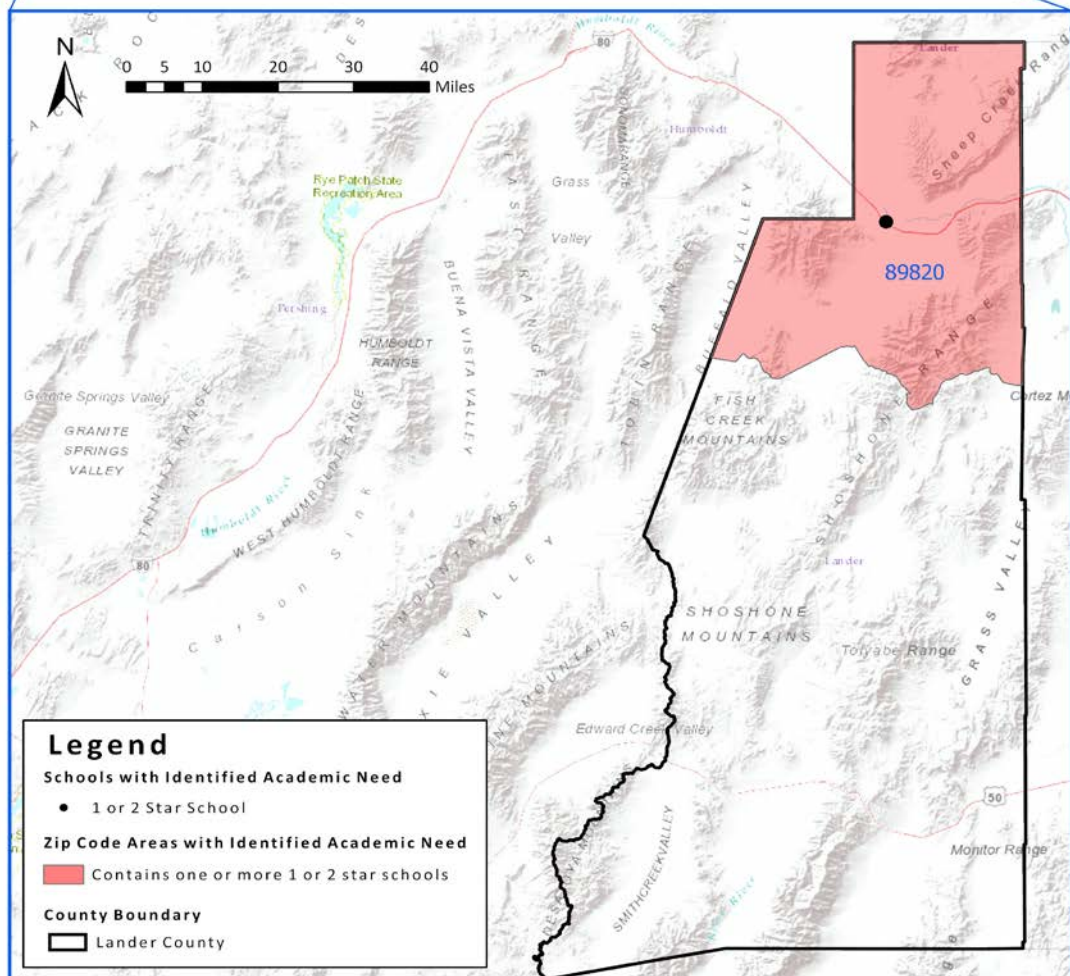
### Analysis of Zip Codes with 1- and 2-Star Schools

#### Summary

- The Lander County School District serves about 984 students in 5 schools across 2 zip codes; and
- In the district, there is 1 school rated 1 or 2 stars in 1 zip code that serves about 384 students, or 39% of students in the district.



#### Lander County, Nevada Zip Code Areas with Identified Academic Need



# District Snapshot

## Lander County School District

### Analysis of Zip Codes with 1- and 2-Star Schools

#### Summary

- The Lander County School District serves about 984 students in 5 schools across 2 zip codes; and
- In the district, there is 1 school rated 1 or 2 stars in 1 zip code that serves about 384 students, or 39% of students in the district.

Zip Codes with 1- and 2-Star Schools								
Zip Code	Total Enrollment	Total # Schools	# 1- or 2-Star Schools	1- or 2-Star School Enrollment	% Enrolled in 1- or 2-Star Schools	# 1- or 2-Star Elem. Schools	# 1- or 2-Star Middle Schools	# 1- or 2-Star High Schools
89820	977	3	1	384	39.3	1	0	0

1- and 2-Star Schools								
School Name	Zip Code	Grades Served <sup>^</sup>	2018-19 NSPF Star Rating	2017-18 NSPF Star Rating	October 1 2020 Enrollment	% EL	% FRL	% IEP
Battle Mtn ES	89820	ES	2	4	384	6.0	47.7	10.9

Tables display zip codes and schools based on 2018-19 Nevada School Performance Framework (NSPF) star ratings. Enrollment is as of October 1, 2020.

<sup>^</sup>In general, elementary schools (ES) serve grades K-5, middle schools (MS) serve grades 6-8, and high schools (HS) serve grades 9-12.

To protect student privacy, rates for population sizes less than 10 are displayed as “n<10”, and enrollment rates less than 5% or greater than 95% are shown as <5.0 and >95.0, respectively.



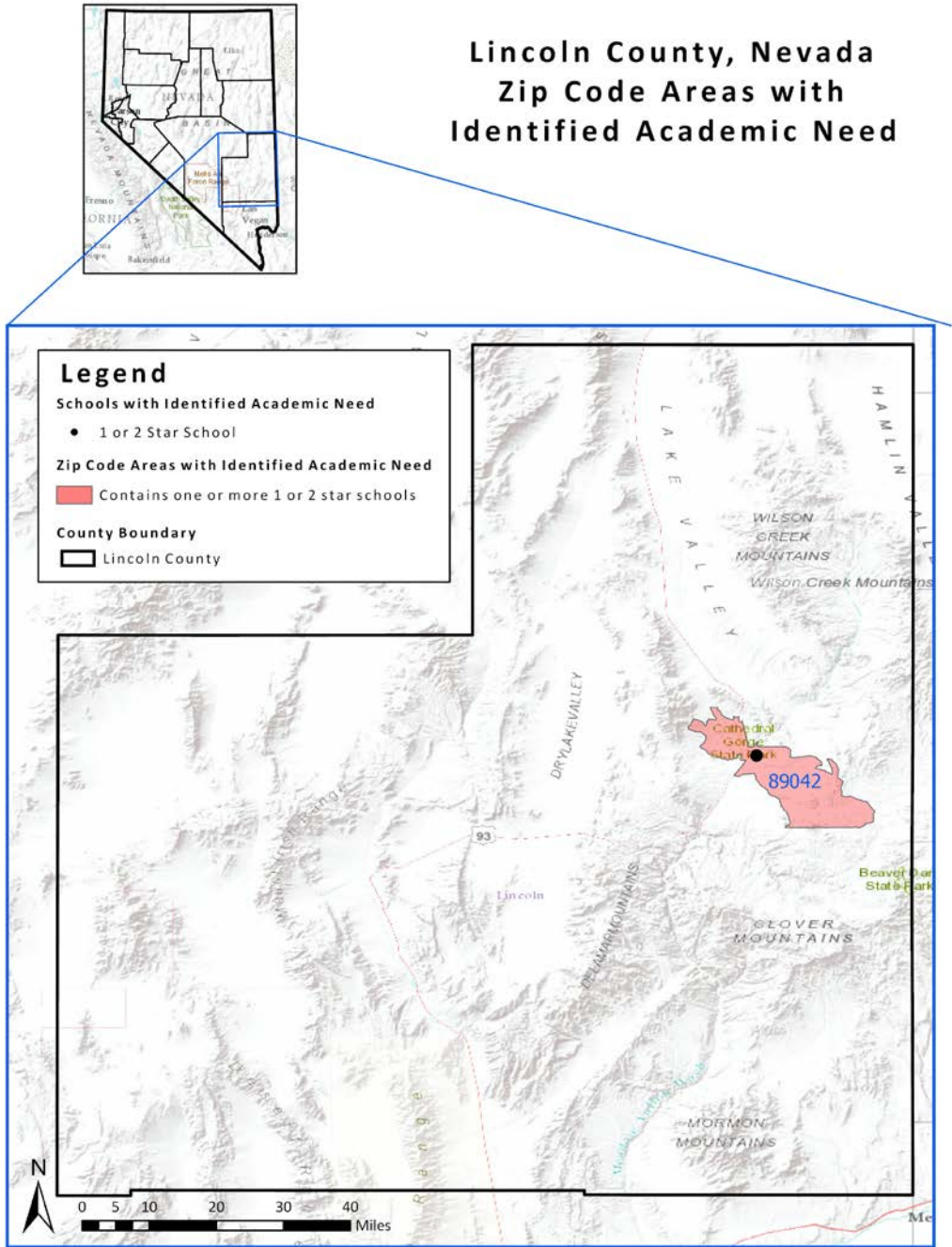
*District Snapshot*

**Lincoln County School District**

*Analysis of Zip Codes with 1- and 2-Star Schools*

## Summary

- The Lincoln County School District serves about 789 students in 10 schools across 4 zip codes; and
- In the district, there is 1 school rated 1 or 2 stars in 1 zip code that serves about 69 students, or 8.7% of students in the district.



# District Snapshot

## Lincoln County School District

### Analysis of Zip Codes with 1- and 2-Star Schools

#### Summary

- The Lincoln County School District serves about 789 students in 10 schools across 4 zip codes; and
- In the district, there is 1 school rated 1 or 2 stars in 1 zip code that serves about 69 students, or 8.7% of students in the district.

Zip Codes with 1- and 2-Star Schools

Zip Code	Total Enrollment	Total # Schools	# 1- or 2-Star Schools	1- or 2-Star School Enrollment	% Enrolled in 1- or 2-Star Schools	# 1- or 2-Star Elem. Schools	# 1- or 2-Star Middle Schools	# 1- or 2-Star High Schools
89042	343	3	1	69	20.1	0	1	0

1- and 2-Star Schools

School Name	Zip Code	Grades Served <sup>^</sup>	2018-19 NSPF Star Rating	2017-18 NSPF Star Rating	October 1 2020 Enrollment	% EL	% FRL	% IEP
Meadow Valley MS	89042	MS	2	2	69	n<10	46.4	14.5

Tables display zip codes and schools based on 2018-19 Nevada School Performance Framework (NSPF) star ratings. Enrollment is as of October 1, 2020.

<sup>^</sup>In general, elementary schools (ES) serve grades K-5, middle schools (MS) serve grades 6-8, and high schools (HS) serve grades 9-12.

To protect student privacy, rates for population sizes less than 10 are displayed as “n<10”, and enrollment rates less than 5% or greater than 95% are shown as <5.0 and >95.0, respectively.

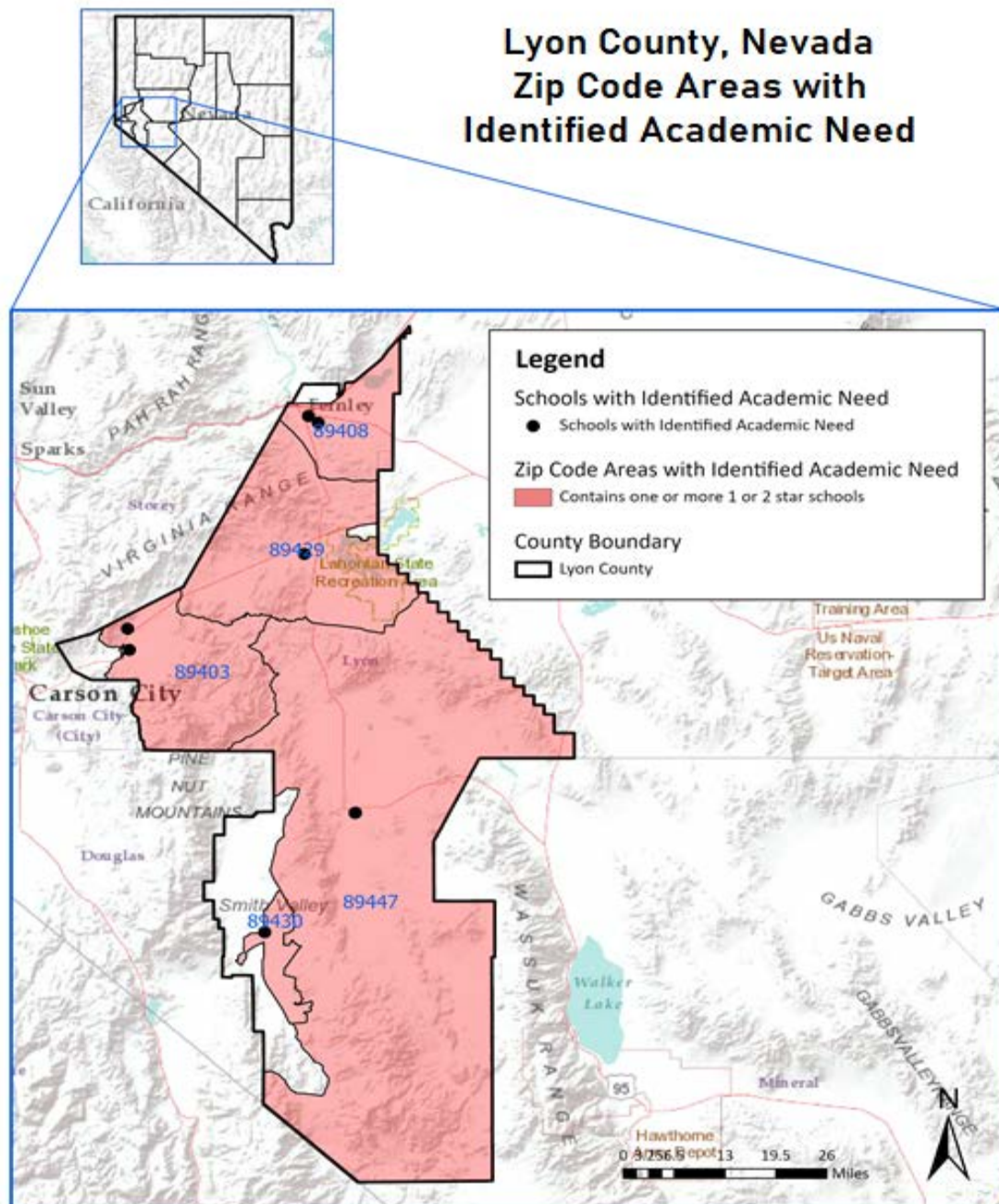
# District Snapshot

## Lyon County School District

### Analysis of Zip Codes with 1- and 2-Star Schools

#### Summary

- The Lyon County School District serves about 8,736 students in 22 schools across 5 zip codes; and
- In the district, there are 9 schools rated 1 or 2 stars across 5 zip codes that serve about 3,112 students, or 35.6% of students in the district.



# District Snapshot

## Lyon County School District

### Analysis of Zip Codes with 1- and 2-Star Schools

#### Summary

- The Lyon County School District serves about 8,736 students in 22 schools across 5 zip codes; and
- In the district, there are 9 schools rated 1 or 2 stars across 5 zip codes that serve about 3,112 students, or 35.6% of students in the district.

Zip Codes with 1- and 2-Star Schools								
Zip Code	Total Enrollment	Total # Schools	# 1- or 2-Star Schools	1- or 2-Star School Enrollment	% Enrolled in 1- or 2-Star Schools	# 1- or 2-Star Elem. Schools	# 1- or 2-Star Middle Schools	# 1- or 2-Star High Schools
89403	2290	5	2	801	34.9	1	1	0
89408	4007	6	2	1000	24.9	2	0	0
89429	985	5	1	336	34.1	1	0	0
89430	226	3	2	132	58.4	1	1	0
89447	1228	3	2	843	68.6	1	1	0

1- and 2-Star Schools								
School Name	Zip Code	Grades Served <sup>^</sup>	2018-19 NSPF Star Rating	2017-18 NSPF Star Rating	October 1 2020 Enrollment	% EL	% FRL	% IEP
Cottonwood ES	89408	ES	2	2	574	5.2	42.9	14.5
Dayton Intermediate MS	89403	MS	2	2	431	<5.0	34.1	9.0
Fernley ES	89408	ES	2	3	426	6.1	47.9	16.9
Silver Stage ES	89429	ES	2	1	336	n<10	>95.0	15.2
Smith Valley Combined ES	89430	ES	2	3	96	n<10	21.9	n<10
Smith Valley Combined MS	89430	MS	1	3	36	n<10	n<10	n<10
Sutro ES	89403	ES	2	2	370	9.7	45.4	10.8
Yerington ES	89447	ES	1	2	438	25.8	>95.0	12.6
Yerington Intermediate MS	89447	MS	2	2	405	9.1	>95.0	12.6

Tables display zip codes and schools based on 2018-19 Nevada School Performance Framework (NSPF) star ratings. Enrollment is as of October 1, 2020.

<sup>^</sup>In general, elementary schools (ES) serve grades K-5, middle schools (MS) serve grades 6-8, and high schools (HS) serve grades 9-12.

To protect student privacy, rates for population sizes less than 10 are displayed as “n<10”, and enrollment rates less than 5% or greater than 95% are shown as <5.0 and >95.0, respectively.



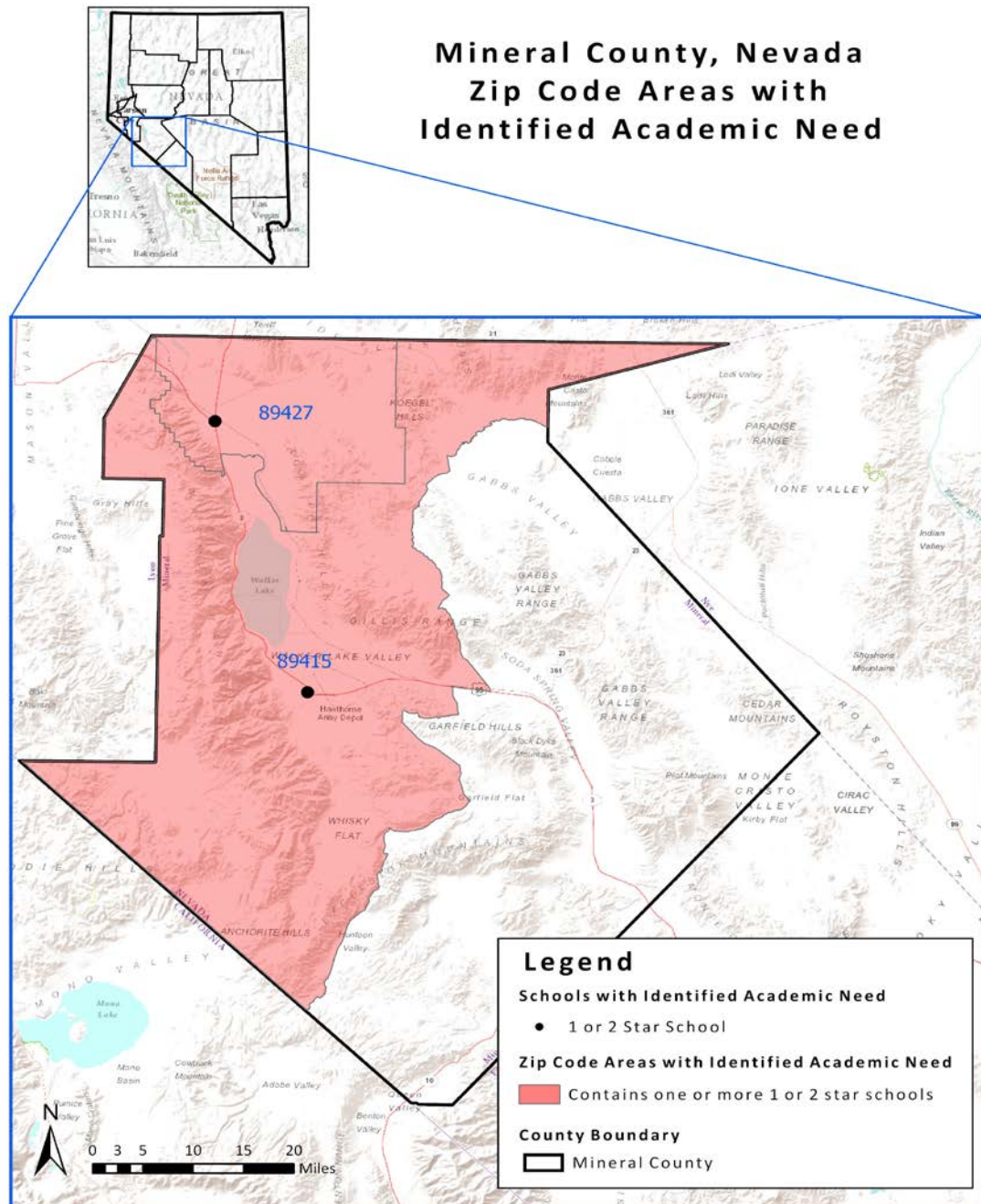
# District Snapshot

## Mineral County School District

### Analysis of Zip Codes with 1- and 2-Star Schools

#### Summary

- The Mineral County School District serves about 540 students in 4 schools across 2 zip codes; and
- In the district, there are 2 schools rated 1 or 2 stars across 2 zip codes that serve about 136 students, or 25.1% of students in the district.



# District Snapshot

## Mineral County School District

### Analysis of Zip Codes with 1- and 2-Star Schools

#### Summary

- The Mineral County School District serves about 540 students in 4 schools across 2 zip codes; and
- In the district, there are 2 schools rated 1 or 2 stars across 2 zip codes that serve about 136 students, or 25.1% of students in the district.

**Zip Codes with 1- and 2-Star Schools**

Zip Code	Total Enrollment	Total # Schools	# 1- or 2-Star Schools	1- or 2-Star School Enrollment	% Enrolled in 1- or 2-Star Schools	# 1- or 2-Star Elem. Schools	# 1- or 2-Star Middle Schools	# 1- or 2-Star High Schools
89415	473	3	1	69	14.5	0	1	0
89427	67	1	1	67	100.0	1	0	0

**1- and 2-Star Schools**

School Name	Zip Code	Grades Served^	2018-19 NSPF Star Rating	2017-18 NSPF Star Rating	October 1 2020 Enrollment	% EL	% FRL	% IEP
Hawthorne JHS	89415	MS	1	2	69	n<10	>95.0	14.5
Schurz ES	89427	ES	1	1	67	65.7	>95.0	n<10

Tables display zip codes and schools based on 2018-19 Nevada School Performance Framework (NSPF) star ratings. Enrollment is as of October 1, 2020.

^In general, elementary schools (ES) serve grades K-5, middle schools (MS) serve grades 6-8, and high schools (HS) serve grades 9-12.

To protect student privacy, rates for population sizes less than 10 are displayed as “n<10”, and enrollment rates less than 5% or greater than 95% are shown as <5.0 and >95.0, respectively.



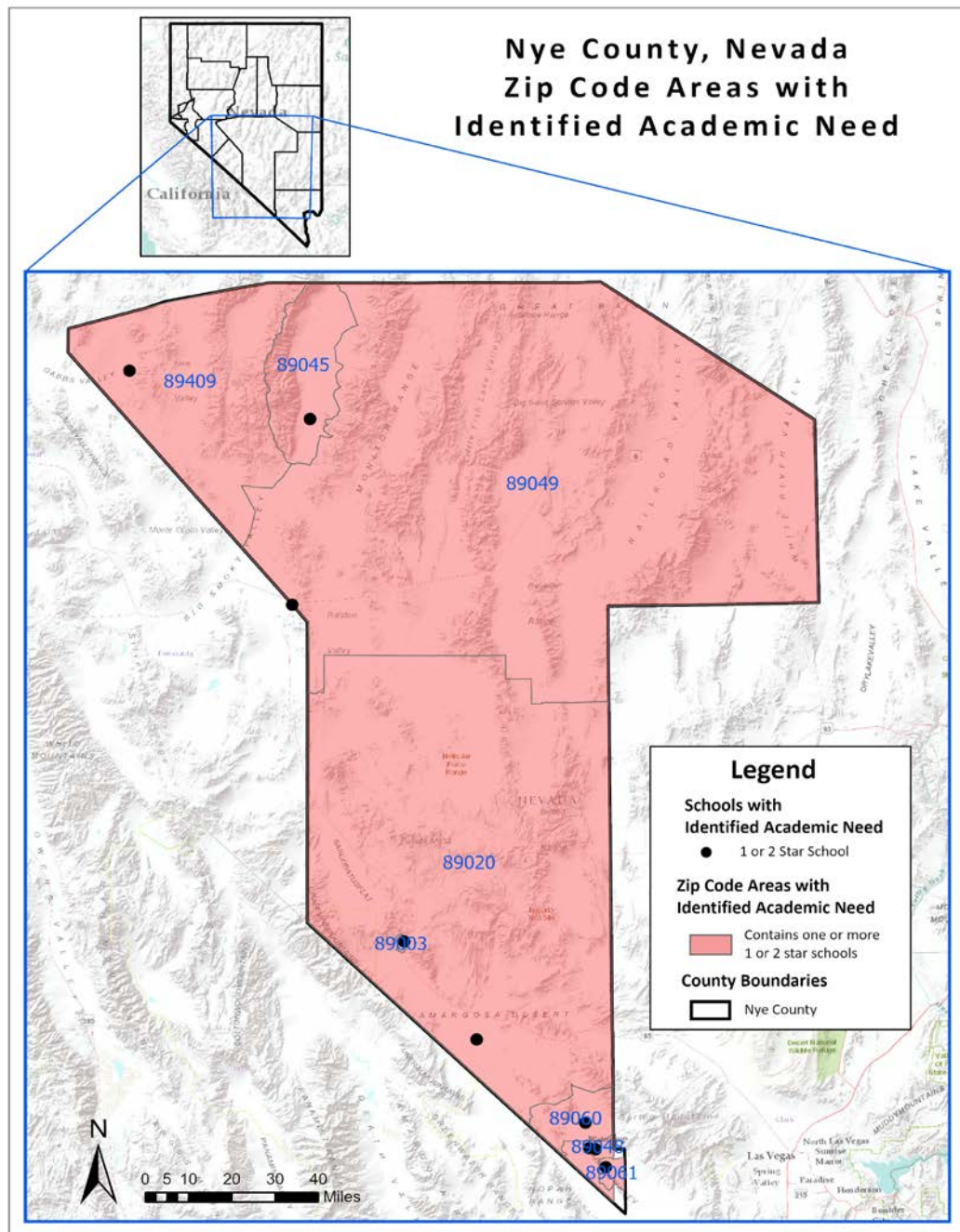
# District Snapshot

## Nye County School District

### Analysis of Zip Codes with 1- and 2-Star Schools

#### Summary

- The Nye County School District serves about 5,169 students in 27 schools across 9 zip codes; and
- In the district, there are 12 schools rated 1 or 2 stars across 8 zip codes that serve about 2,583 students, or 49.9% of students in the district.



# District Snapshot

## Nye County School District

### Analysis of Zip Codes with 1- and 2-Star Schools

#### Summary

- The Nye County School District serves about 5,169 students in 27 schools across 9 zip codes; and
- In the district, there are 12 schools rated 1 or 2 stars across 8 zip codes that serve about 2,583 students, or 49.9% of students in the district.

Zip Codes with 1- and 2-Star Schools								
Zip Code	Total Enrollment	Total # Schools	# 1- or 2-Star Schools	1- or 2-Star School Enrollment	% Enrolled in 1- or 2-Star Schools	# 1- or 2-Star Elem. Schools	# 1- or 2-Star Middle Schools	# 1- or 2-Star High Schools
89003	185	3	1	27	14.5	0	1	0
89020	117	2	1	79	67.5	1	0	0
89045	261	3	2	187	71.6	1	1	0
89048	1908	5	3	590	30.9	1	1	1
89049	338	5	2	214	63.3	1	1	0
89060	1435	2	1	982	68.4	0	1	0
89061	867	2	1	480	55.3	1	0	0
89409	43	3	1	24	55.8	1	0	0

1- and 2-Star Schools								
School Name	Zip Code	Grades Served <sup>^</sup>	2018-19 NSPF Star Rating	2017-18 NSPF Star Rating	October 1 2020 Enrollment	% EL	% FRL	% IEP
Amargosa Valley ES	89020	ES	1	2	79	41.8	>95.0	n<10
Beatty MS	89003	MS	1	2	27	n<10	>95.0	n<10
Floyd ES	89061	ES	2	3	480	5.6	>95.0	14.8
Gabbs ES	89409	ES	1	Not Rated	24	n<10	>95.0	n<10
JG Johnson ES	89048	ES	2	1	411	7.5	>95.0	11.7
Pathways MS	89048	MS	1	1	44	n<10	63.6	27.3
Pathways HS	89048	HS	1	1	135	n<10	83.7	16.3
Rosemary Clarke MS	89060	MS	2	2	982	7.3	>95.0	14.4
Round Mtn ES	89045	ES	1	1	119	n<10	>95.0	n<10
Round Mtn MS	89045	MS	2	1	68	n<10	>95.0	n<10
Tonopah ES	89049	ES	2	1	148	n<10	>95.0	n<10
Tonopah MS	89049	MS	1	2	66	n<10	>95.0	n<10

Tables display zip codes and schools based on 2018-19 Nevada School Performance Framework (NSPF) star ratings. Enrollment is as of October 1, 2020.

<sup>^</sup>In general, elementary schools (ES) serve grades K-5, middle schools (MS) serve grades 6-8, and high schools (HS) serve grades 9-12.

To protect student privacy, rates for population sizes less than 10 are displayed as “n<10”, and enrollment rates less than 5% or greater than 95% are shown as <5.0 and >95.0, respectively.

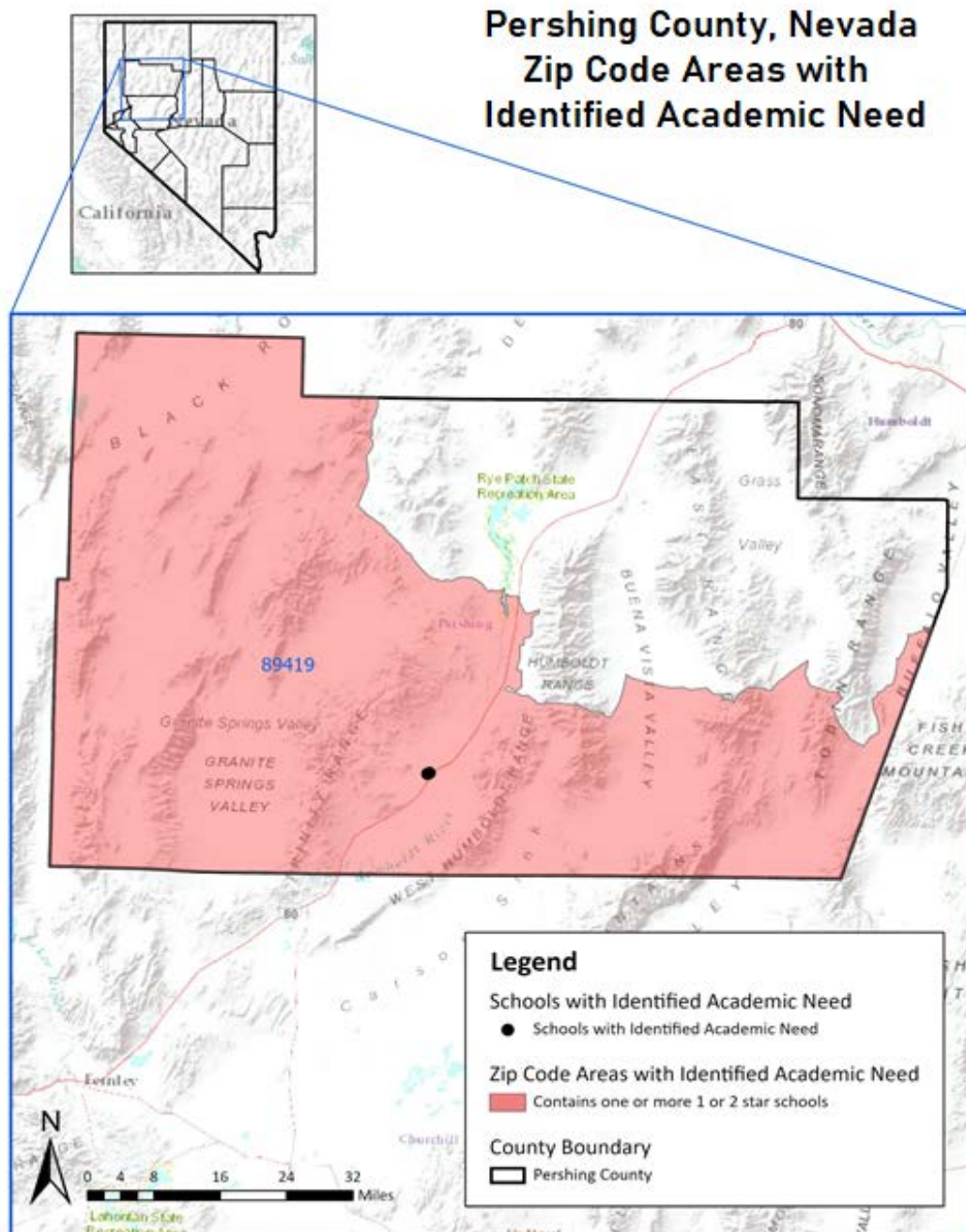
## District Snapshot

# Pershing County School District

## Analysis of Zip Codes with 1- and 2-Star Schools

### Summary

- The Pershing County School District serves about 627 students in 4 schools across 1 zip code; and
- In the district, there are 2 schools rated 1 or 2 stars in 1 zip code that serve about 449 students, or 71.6% of students in the district.



## District Snapshot

# Pershing County School District

## Analysis of Zip Codes with 1- and 2-Star Schools

### Summary

- The Pershing County School District serves about 627 students in 4 schools across 1 zip code; and
- In the district, there are 2 schools rated 1 or 2 stars in 1 zip code that serve about 449 students, or 71.6% of students in the district.

Zip Codes with 1- and 2-Star Schools

Zip Code	Total Enrollment	Total # Schools	# 1- or 2-Star Schools	1- or 2-Star School Enrollment	% Enrolled in 1- or 2-Star Schools	# 1- or 2-Star Elem. Schools	# 1- or 2-Star Middle Schools	# 1- or 2-Star High Schools
89419	627	4	2	449	71.6	1	1	0

1- and 2-Star Schools

School Name	Zip Code	Grades Served <sup>^</sup>	2018-19 NSPF Star Rating	2017-18 NSPF Star Rating	October 1 2020 Enrollment	% EL	% FRL	% IEP
Lovelock ES	89419	ES	2	2	305	9.2	>95.0	16.1
Pershing MS	89419	MS	1	1	144	8.3	47.2	17.4

Tables display zip codes and schools based on 2018-19 Nevada School Performance Framework (NSPF) star ratings. Enrollment is as of October 1, 2020.

<sup>^</sup>In general, elementary schools (ES) serve grades K-5, middle schools (MS) serve grades 6-8, and high schools (HS) serve grades 9-12.

To protect student privacy, rates for population sizes less than 10 are displayed as “n<10”, and enrollment rates less than 5% or greater than 95% are shown as <5.0 and >95.0, respectively.



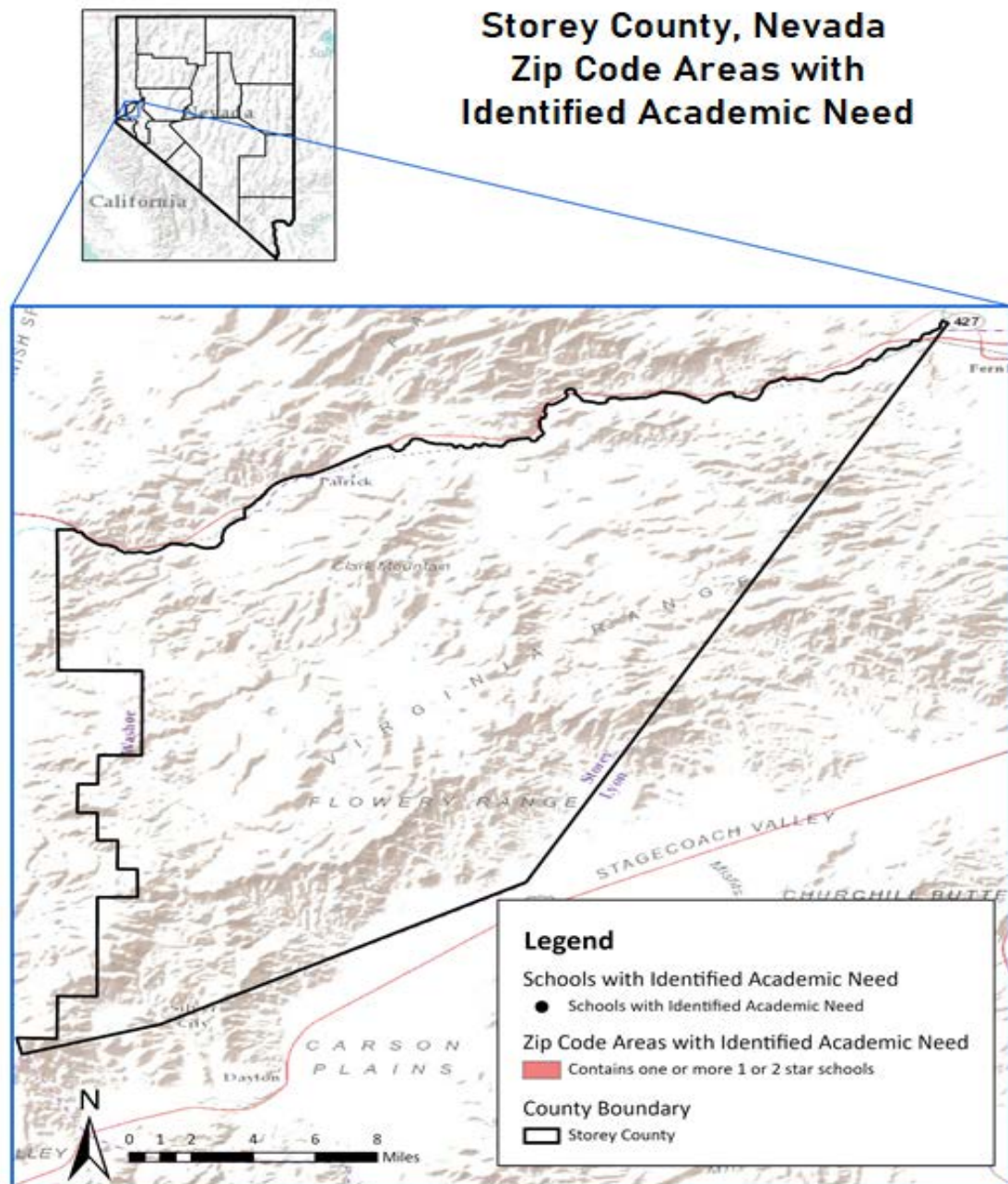
# District Snapshot

## Storey County School District

### Analysis of Zip Codes with 1- and 2-Star Schools

#### Summary

- The Storey County School District serves about 446 students in 4 schools across 2 zip codes; and
- In the district, there are 0 schools rated 1 or 2 stars.



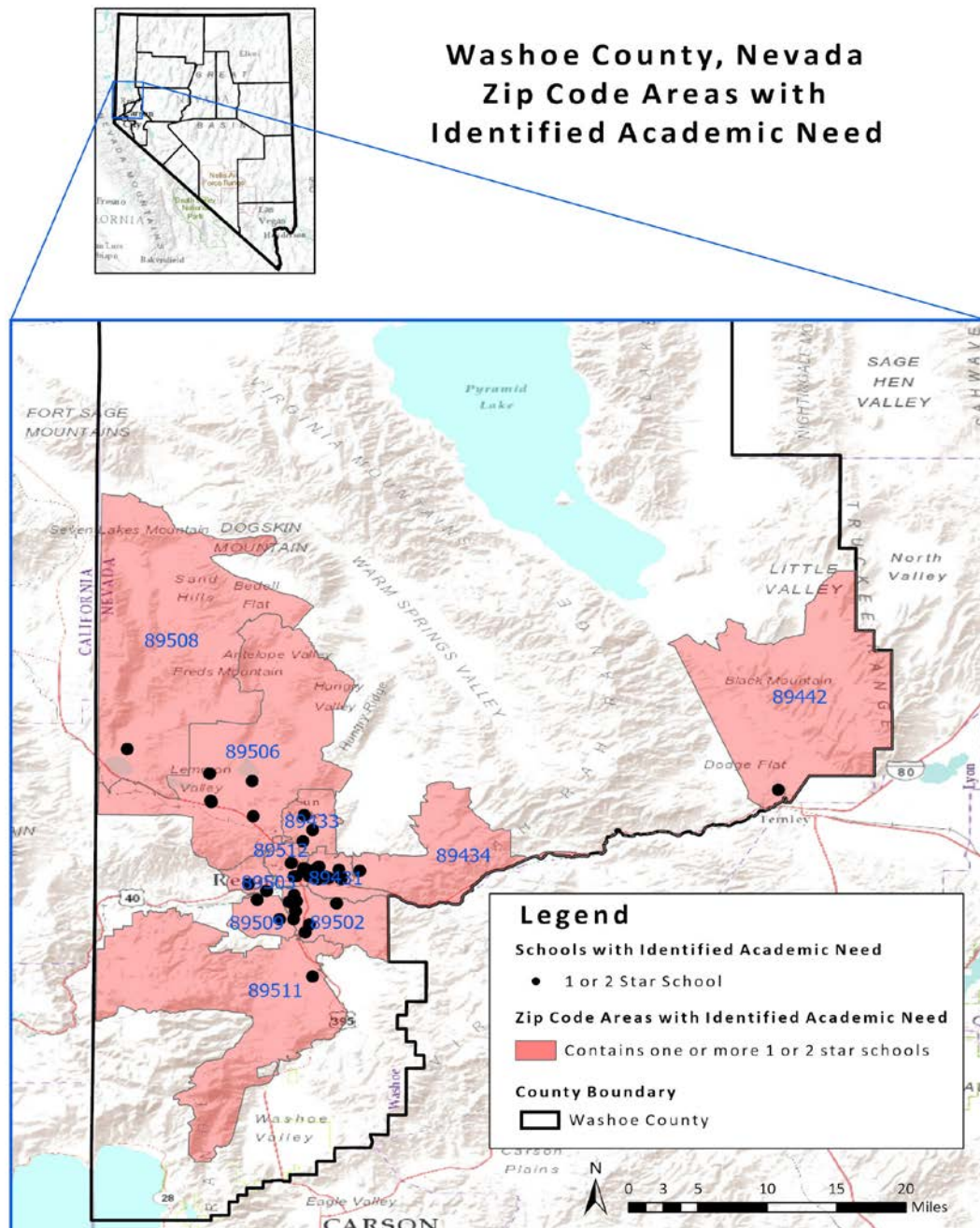
# District Snapshot

## Washoe County School District

### Analysis of Zip Codes with 1- and 2-Star Schools

#### Summary

- The Washoe County School District serves about 63,891 students in 123 schools across 19 zip codes; and
- In the district, there are 39 schools rated 1 or 2 stars across 11 zip codes that serve about 17,639 students, or 27.6% of students in the district.

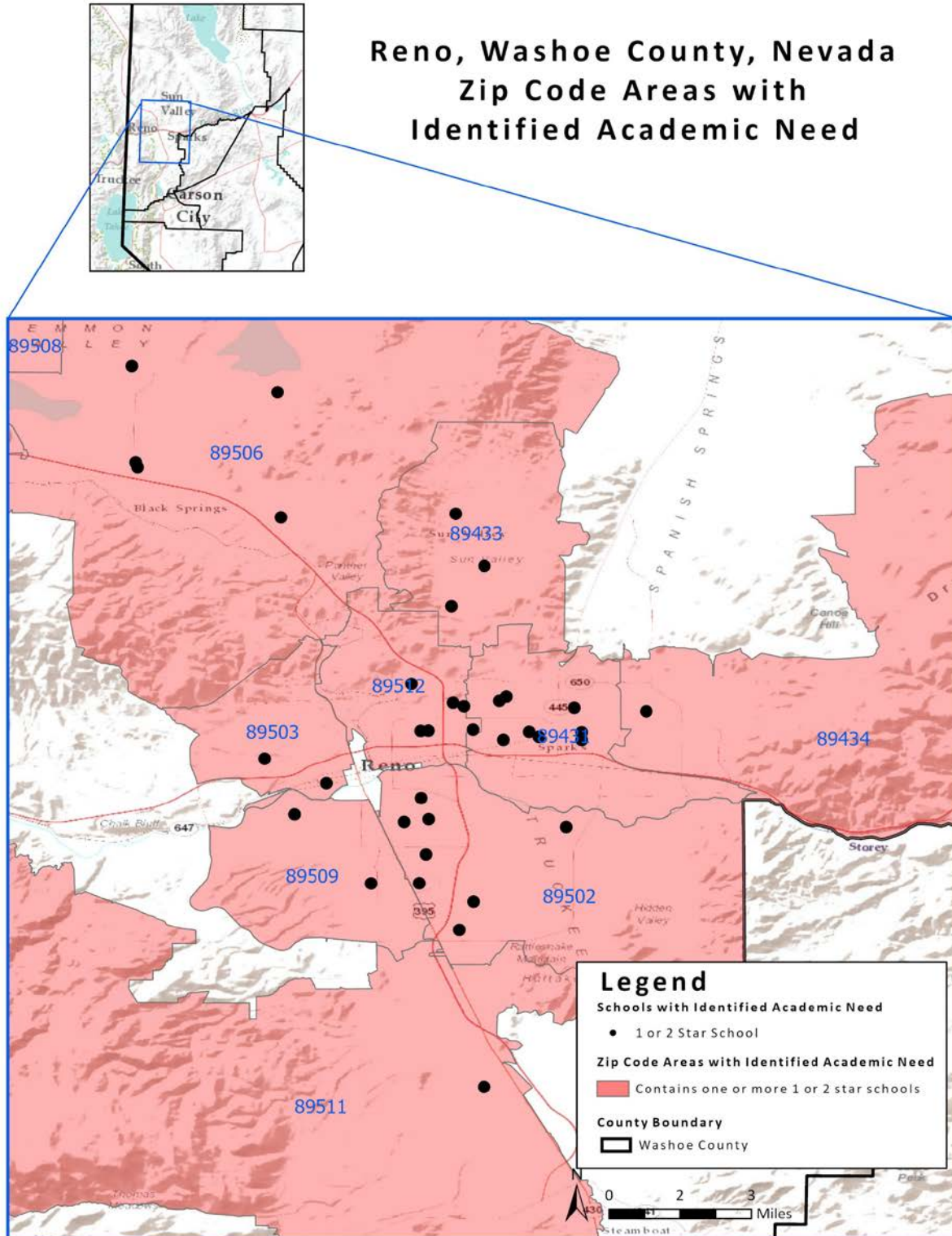




## District Snapshot

# Washoe County School District

## Analysis of Zip Codes with 1- and 2-Star Schools



# District Snapshot

## Washoe County School District

### Analysis of Zip Codes with 1- and 2-Star Schools

#### Summary

- The Washoe County School District serves about 63,891 students in 123 schools across 19 zip codes; and
- In the district, there are 39 schools rated 1 or 2 stars across 11 zip codes that serve about 17,639 students, or 27.6% of students in the district.

Zip Codes with 1- and 2-Star Schools								
Zip Code	Total Enrollment	Total # Schools	# 1- or 2-Star Schools	1- or 2-Star School Enrollment	% Enrolled in 1- or 2-Star Schools	# 1- or 2-Star Elem. Schools	# 1- or 2-Star Middle Schools	# 1- or 2-Star High Schools
89431	5316	11	8	4309	81.0	5	2	1
89433	2812	5	3	1297	46.1	3	0	0
89434	4558	6	1	472	10.3	1	0	0
89442	106	1	1	106	100.0	1	0	0
89502	8322	21	8	2935	35.2	6	1	1
89503	2080	6	2	419	20.1	1	0	1
89506	6335	10	5	3234	51.0	4	1	0
89508	1490	2	1	564	37.8	1	0	0
89509	4232	11	2	518	12.2	1	0	1
89511	3856	9	2	46	1.1	1	1	0
89512	5399	11	6	3739	69.2	4	1	1

1- and 2-Star Schools								
School Name	Zip Code	Grades Served <sup>A</sup>	2018-19 NSPF Star Rating	2017-18 NSPF Star Rating	October 1 2020 Enrollment	% EL	% FRL	% IEP
Allen ES	89433	ES	2	2	404	42.8	>95.0	15.6
Anderson ES	89509	ES	1	1	434	26.3	>95.0	14.7
Bailey CH ES	89502	ES	2	2	221	41.6	>95.0	9.0
Bennett ES	89433	ES	2	2	396	36.1	>95.0	16.7
Booth ES	89502	ES	1	1	348	19.8	>95.0	20.1
Cannan ES	89512	ES	2	1	398	30.2	>95.0	11.3
Desert Heights ES	89506	ES	2	1	399	21.3	>95.0	25.3
Dilworth MS	89431	MS	2	2	658	15.7	>95.0	20.4
Duncan ES	89512	ES	2	1	369	43.9	>95.0	17.6
Dunn ES	89434	ES	2	3	472	15.5	47.0	12.9
Elmcrest ES	89503	ES	2	2	324	14.8	>95.0	17.3
enCompass CS HS	89509	HS	1	1	84	n<10	59.5	33.3
Gomes ES	89508	ES	2	2	564	5.1	32.6	11.7
Greenbrae ES	89431	ES	2	2	323	38.1	>95.0	13.9
High Desert CS ES	89512	ES	2	2	286	6.3	29.7	9.4
Hug HS	89512	HS	2	2	1593	27.2	>95.0	16.3

Tables display zip codes and schools based on 2018-19 Nevada School Performance Framework (NSPF) star ratings. Enrollment is as of October 1, 2020.

<sup>A</sup>In general, elementary schools (ES) serve grades K-5, middle schools (MS) serve grades 6-8, and high schools (HS) serve grades 9-12.

To protect student privacy, rates for population sizes less than 10 are displayed as "n<10", and enrollment rates less than 5% or greater than 95% are shown as <5.0 and >95.0, respectively.

# District Snapshot

## Washoe County School District

### Analysis of Zip Codes with 1- and 2-Star Schools

#### Summary

- The Washoe County School District serves about 63,891 students in 123 schools across 19 zip codes; and
- In the district, there are 39 schools rated 1 or 2 stars across 11 zip codes that serve about 17,639 students, or 27.6% of students in the district.

1- and 2-Star Schools (continued)								
School Name	Zip Code	Grades Served <sup>^</sup>	2018-19 NSPF Star Rating	2017-18 NSPF Star Rating	October 1 2020 Enrollment	% EL	% FRL	% IEP
Innovations HS	89503	HS	1	1	95	n<10	40.0	23.2
Inspire Academy HS	89502	HS	1	Not Rated	86	15.1	>95.0	25.6
Lemmon Valley ES	89506	ES	2	3	582	23.5	>95.0	14.1
Lincoln Park ES	89431	ES	2	2	376	33.0	>95.0	14.4
Loder ES	89502	ES	2	1	435	50.6	>95.0	12.6
Mariposa CS ES	89502	ES	2	2	147	44.9	>95.0	8.8
Mathews ES	89512	ES	2	1	477	41.7	>95.0	15.5
Mitchell ES	89431	ES	2	2	347	27.4	>95.0	13.0
Natchez ES	89442	ES	1	1	106	n<10	>95.0	19.8
O'Brien MS	89506	MS	1	2	864	16.7	42.8	15.7
Picollo ES	89511	ES	1	Not Rated	34	n<10	>95.0	>95.0
Picollo MS	89511	MS	1	Not Rated	12	n<10	>95.0	>95.0
Risley ES	89431	ES	2	3	420	41.0	>95.0	12.6
Smith Alice ES	89506	ES	2	2	715	19.9	>95.0	16.4
Smith Kate ES	89431	ES	2	2	225	49.8	>95.0	8.0
Smithridge ES	89502	ES	2	2	634	47.8	>95.0	11.8
Sparks MS	89431	MS	2	2	742	26.7	>95.0	14.3
Sparks HS	89431	HS	2	3	1218	25.5	48.4	14.0
Stead ES	89506	ES	2	1	674	25.1	>95.0	14.5
Sun Valley ES	89433	ES	2	2	497	42.9	>95.0	9.5
Traner MS	89512	MS	2	1	616	25.2	>95.0	19.0
Vaughn MS	89502	MS	2	1	750	25.5	>95.0	13.3
Veterans Memorial STEM ES	89502	ES	1	2	314	42.4	>95.0	16.9

Tables display zip codes and schools based on 2018-19 Nevada School Performance Framework (NSPF) star ratings. Enrollment is as of October 1, 2020.

<sup>^</sup>In general, elementary schools (ES) serve grades K-5, middle schools (MS) serve grades 6-8, and high schools (HS) serve grades 9-12.

To protect student privacy, rates for population sizes less than 10 are displayed as "n<10", and enrollment rates less than 5% or greater than 95% are shown as <5.0 and >95.0, respectively.

## District Snapshot

# White Pine County School District

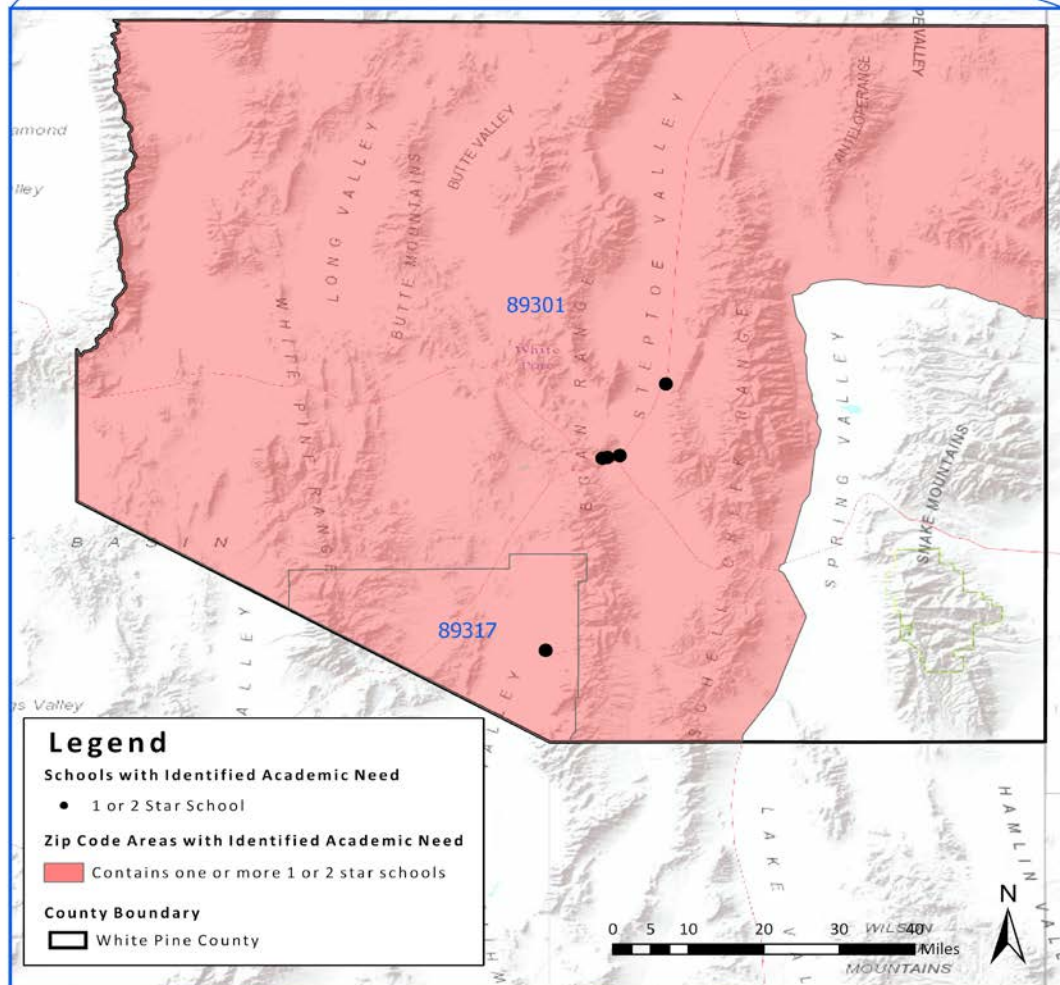
### Analysis of Zip Codes with 1- and 2-Star Schools

#### Summary

- The White Pine County School District serves about 1,167 students in 9 schools across 4 zip codes; and
- In the district, there are 7 schools rated 1 or 2 stars across 3 zip codes that serve about 786 students, or 67.3% of students in the district.



#### White Pine County, Nevada Zip Code Areas with Identified Academic Need



# District Snapshot

## White Pine County School District

### Analysis of Zip Codes with 1- and 2-Star Schools

#### Summary

- The White Pine County School District serves about 1,167 students in 9 schools across 4 zip codes; and
- In the district, there are 7 schools rated 1 or 2 stars across 3 zip codes that serve about 786 students, or 67.3% of students in the district.

**Zip Codes with 1- and 2-Star Schools**

Zip Code	Total Enrollment	Total # Schools	# 1- or 2-Star Schools	1- or 2-Star School Enrollment	% Enrolled in 1- or 2-Star Schools	# 1- or 2-Star Elem. Schools	# 1- or 2-Star Middle Schools	# 1- or 2-Star High Schools
89301	952	4	3	588	61.7	1	1	1
89317	100	3	3	100	100.0	1	1	1
89318	98	1	1	98	100.0	1	0	0

**1- and 2-Star Schools**

School Name	Zip Code	Grades Served^	2018-19 NSPF Star Rating	2017-18 NSPF Star Rating	October 1 2020 Enrollment	% EL	% FRL	% IEP
Lund ES	89317	ES	1	2	53	0.0	43.4	n<10
Lund JSHS	89317	MS	1	5	22	0.0	n<10	n<10
Lund JSHS	89317	HS	1	1	25	0.0	48.0	n<10
McGill ES	89318	ES	2	2	98	0.0	>95.0	12.2
Norman ES	89301	ES	1	1	328	n<10	>95.0	17.4
Steptoe Valley HS	89301	HS	1	1	19	0.0	>95.0	n<10
White Pine MS	89301	MS	2	3	241	n<10	>95.0	20.3

Tables display zip codes and schools based on 2018-19 Nevada School Performance Framework (NSPF) star ratings. Enrollment is as of October 1, 2020.

^In general, elementary schools (ES) serve grades K-5, middle schools (MS) serve grades 6-8, and high schools (HS) serve grades 9-12.

To protect student privacy, rates for population sizes less than 10 are displayed as “n<10”, and enrollment rates less than 5% or greater than 95% are shown as <5.0 and >95.0, respectively.

# *Appendix B:*

## *Definitions of Star Ratings*

*The following pages include definitions of each star rating level from the Nevada School Performance Framework.*

*Source: [2019 Nevada School Performance Framework Procedures Manual](#)*



## Elementary and Middle School NSPF Star Rating Descriptions

Category	Policy Descriptors
★ ★ ★ ★ ★	Recognizes a <b>superior</b> school that exceeds expectations for all students and subgroups on every indicator category with little or no exception. A five-star school demonstrates superior academic performance and growth with no opportunity gaps. The school does not fail to meet expectations for any group on any indicator. These schools are recognized for distinguished performance.
★ ★ ★ ★	Recognizes a <b>commendable</b> school that has performed well for all students and subgroups. A four-star school demonstrates satisfactory to strong academic performance for all students. Further, the school is successfully promoting academic progress for all student groups as reflected in closing opportunity gaps. The school does not fail to meet expectations for any group on any indicator. A school identified for targeted support and improvement is not eligible to be classified as a four-star school or higher.
★ ★ ★	Identifies an <b>adequate</b> school that has met the state's standard for performance. The all-students group has met expectations for academic achievement or growth. Subgroups meet expectations for academic achievement or growth with little exception; however, no group is far below standard. The school must submit an improvement plan that identifies supports tailored to subgroups and indicators that are below standard. A school identified for comprehensive support and improvement is not eligible to be classified as a three-star school or higher. Schools identified for targeted support and improvement are eligible to be classified as three-star schools.
★ ★	Identifies a school that has <b>partially met</b> the state's standard for performance. Students and subgroups often meet expectations for academic performance or growth but may have multiple areas that require improvement. Areas requiring significant improvement are uncommon. The school must submit an improvement plan that identifies supports tailored to subgroups and indicators that are below standard. A two-star school in consecutive years is subject to state intervention. A school identified for targeted support and improvement or comprehensive support and improvement is eligible to be classified as a two-star school.
★	Identifies a school that has <b>not met</b> the state's standard for performance. Students and subgroups are inconsistent in achieving performance standards. A one-star school has multiple areas that require improvement including an urgent need to address areas that are significantly below standard. The school must submit an improvement plan that identifies supports tailored to subgroups and indicators that are below standard. The school is subject to state interventions.

## High School NSPF Star Rating Descriptions

Category	Policy Descriptors
★ ★ ★ ★ ★	Recognizes a <b>superior</b> school that exceeds expectations for all students and subgroups on every indicator category with little or no exception. A five-star school demonstrates superior academic performance and a superior graduation rate. The school does not fail to meet expectations for any group on any indicator. These schools are recognized for distinguished performance.
★ ★ ★ ★	Recognizes a <b>commendable</b> school that has performed well for all students and subgroups. A four-star school demonstrates satisfactory to strong academic performance for all students. Further, the school's graduation rate meets expectations. The school does not fail to meet expectations for any group on any indicator. A school identified for targeted support and improvement is not eligible to be classified as a four-star school or higher.
★ ★ ★	Identifies an <b>adequate</b> school that has met the state's standard for performance. The all-students group has met expectations for academic achievement. Subgroups meet expectations for academic achievement or show progress with little exception; however, no group is far below standard. The school must submit an improvement plan that identifies supports tailored to subgroups and indicators that are below standard. A school identified for comprehensive support and improvement is not eligible to be classified as a three-star school or higher. A school identified for targeted support and improvement is eligible to be classified as a three-star school.
★ ★	Identifies a school that has <b>partially met</b> the state's standard for performance. Students and subgroups often meet expectations for academic performance but may have multiple areas that require improvement. Areas requiring significant improvement are uncommon. The school must submit an improvement plan that identifies supports tailored to subgroups and indicators that are below standard. A two-star school in consecutive years is subject to state intervention. A school identified for targeted support and improvement or comprehensive support and improvement is eligible to be classified as a two-star school.
★	Identifies a school that has <b>not met</b> the state's standard for performance. Students and subgroups are inconsistent in achieving performance standards. A one-star school has multiple areas that require improvement including an urgent need to address areas that are significantly below standard. The school must submit an improvement plan that identifies supports tailored to subgroups and indicators that are below standard. The school is subject to state interventions.

# *Appendix C:*

## *Stakeholder Engagement*

Pursuant to NRS 388A.220, the State Public Charter School Authority conducted the first iteration of the Academic and Demographic Needs Assessment in the spring and early summer of 2019 in collaboration with school districts and the Nevada Department of Education. This included several meetings, email communication, and presentations to school district boards of trustees and the State Board of Education between May of 2019 and October of 2019.

In late 2019, the SPCSA convened a working group to support in the development of the Growth Management Plan. Where applicable, feedback from those meetings was incorporated into the December 2019 version of the Needs Assessment. The Working Group met on the following dates: 10/3/19, 10/14/19, 10/30/19.

In the fall of 2020, the SPCSA reconvened the working group, now referred to as the Community Working Group. This Community Working Group is expected to meet at least quarterly to provide input on how charter schools and the SPCSA can partner with communities and stakeholders to meet educational needs. This includes an explicit focus on equitable access and creating school environments that support the needs of diverse learners. The Community Working Group includes a broad set of stakeholders including representatives of the NDE, local school districts, local municipalities, community organizations, and charter schools. Updates and revisions to the Academic and Demographic Needs Assessment were discussed during the October 22, 2020 meeting of the Community Working Groups. Representatives of the following organizations were present:

- The Clark County School District
- The Nevada Department of Education
- Nevada PEP
- CASA
- Clark County Department of Family Services
- Washoe County Human Services Agency – Children’s Services
- City of Henderson
- Beacon Academy
- Opportunity 180

In addition, the SPCSA has been proactive in communicating with and seeking feedback from local school district leaders, both through meetings of the Nevada Association of School Superintendents and additional meetings with specific school district staff.