



SPCSA

Class of 2020-21

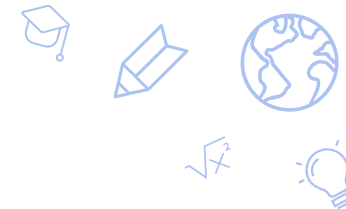
4-Year Graduation Rates



December 3, 2021

ATTACHMENT





Glossary of Acronyms

ACGR	Adjusted Cohort G raduation R ate
CTE	Career and Technical E ducation
ELL	English L anguage L earners
FERPA	Family E ducational R ights and P rivacy A ct (federal law protecting student privacy)
FRL	Free and R educed-Price L unch for economically disadvantaged students
IEP	Individualized E ducation P rograms for students with disabilities
LEA	Local E ducational A gency (School District)
NSPF	N evada S chool P erformance F ramework (annual school star ratings)
SPCSA	State P ublic C harter S chool A uthority

2020-21 Graduation Rates by Population by School



Entity	Overall	Asian	Bl/Afr Amer	White	Hispanic /Latino	Amer Ind/AK Native	Two or More	Pacific Islander	Econ Disadv (FRL)	Stud w/Disab (IEP)	Eng Lrnr (ELL)	CTE	Migrant	Homeless	Foster
STATE	81.3	92.8	70.2	84.9	79.6	72.1	83.3	83.6	79.0	64.5	71.1	91.7	>95.0	63.2	43.3
SPCSA	86.8	95.0	79.7	90.5	83.2	93.7	87.8	86.1	81.2	74.4	73.3	>95.0	*	45.9	45.4
Alpine	96.2	N/A	*	>95.0	*	N/A	N/A	N/A	92.3	*	*	*	N/A	N/A	N/A
Amplus Durango	95.1	>95.0	81.8	>95.0	>95.0	*	*	N/A	88.4	*	*	*	N/A	*	N/A
Beacon	13.9	*	10.5	13.6	16.0	N/A	*	*	15.3	27.1	10.8	35.2	N/A	<5.0	*
CASLV Sandy Ridge	99.0	>95.0	*	>95.0	>95.0	*	>95.0	*	>95.0	*	*	*	N/A	*	N/A
Democracy Prep	86.4	N/A	83.3	*	93.3	N/A	*	N/A	86.4	*	*	*	N/A	N/A	N/A
Doral Red Rock	100.0	>95.0	*	>95.0	>95.0	*	*	*	>95.0	*	*	N/A	N/A	*	N/A
Equipo	87.3	*	*	*	87.5	N/A	*	N/A	87.3	83.3	77.1	*	N/A	*	N/A
Founders	93.7	N/A	N/A	*	*	N/A	*	N/A	*	*	*	N/A	N/A	*	N/A
Leadership	96.0	*	N/A	>95.0	*	N/A	N/A	*	90.0	*	N/A	*	N/A	*	N/A
NSHS Downtown	100.0	*	*	*	>95.0	N/A	N/A	*	>95.0	*	*	>95.0	N/A	*	N/A
NSHS Dtnw Hndsn	100.0	*	*	>95.0	*	N/A	*	N/A	>95.0	N/A	N/A	*	N/A	N/A	N/A
NSHS Henderson	98.4	*	*	>95.0	>95.0	N/A	>95.0	*	>95.0	*	*	>95.0	N/A	*	N/A
NSHS Meadowood	100.0	*	N/A	>95.0	*	N/A	*	N/A	*	*	*	*	N/A	*	N/A
NSHS Northwest	100.0	*	*	>95.0	*	N/A	*	*	>95.0	*	N/A	*	N/A	*	N/A
NSHS Southwest	96.9	>95.0	>95.0	87.5	>95.0	N/A	*	*	>95.0	*	*	>95.0	N/A	*	N/A

2020-21 Graduation Rates by Population by School



Entity	Overall	Asian	Bl/Afr Amer	White	Hispanic /Latino	Amer Ind/AK Native	Two or More	Pacific Islander	Econ Disadv (FRL)	Stud w/Disab (IEP)	Eng Lrnr (ELL)	CTE	Migrant	Homeless	Foster
STATE	81.3	92.8	70.2	84.9	79.6	72.1	83.3	83.6	79.0	64.5	71.1	91.7	>95.0	63.2	43.3
SPCSA	86.8	95.0	79.7	90.5	83.2	93.7	87.8	86.1	81.2	74.4	73.3	>95.0	*	45.9	45.4
NSHS Summerlin	95.6	>95.0	94.1	>95.0	91.6	*	*	*	94.4	*	*	>95.0	*	*	N/A
NSHS Sunrise	94.5	*	>95.0	*	91.1	N/A	*	N/A	94.0	*	80.0	>95.0	*	*	*
NV Connections	86.1	>95.0	86.6	88.6	84.5	*	75.0	*	84.0	78.5	69.2	>95.0	N/A	*	*
NV Virtual	86.2	94.1	95.8	87.3	83.7	*	*	*	87.9	88.8	75.0	*	N/A	N/A	N/A
Oasis	100.0	*	*	>95.0	>95.0	*	N/A	N/A	>95.0	*	*	*	N/A	*	*
Pinecrest Cadence	91.9	*	*	92.3	*	N/A	*	*	80.0	*	*	*	N/A	*	N/A
SLAM	96.7	*	*	>95.0	94.3	*	*	*	>95.0	92.8	>95.0	>95.0	N/A	*	N/A
Somerset Losee	96.5	*	>95.0	>95.0	94.5	*	*	*	93.3	88.8	90.0	N/A	N/A	*	*
Somerset Sky Pt	99.2	*	>95.0	>95.0	>95.0	*	>95.0	N/A	>95.0	>95.0	>95.0	>95.0	N/A	*	N/A