



# SPCSA

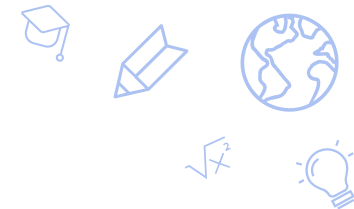
## School Year 2021-22

### Student Enrollment



December 3, 2021

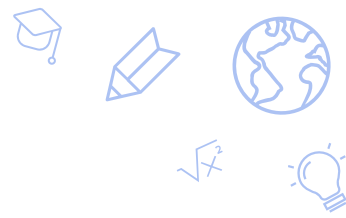




# OUTLINE

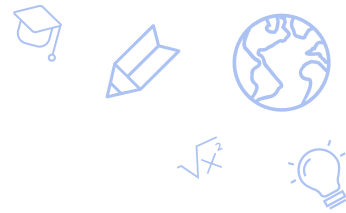
- Overview of Annual Nevada Enrollment Data
- SPCSA Enrollment Highlights
- SPCSA Total Enrollment Trend (2017 to 2021)
- Enrollment Across Nevada (2021)
- SPCSA Student Group Enrollment Trends (2019 to 2021)
- SPCSA vs. State Student Group Enrollment (2021)
- SPCSA Enrollment vs. Local School Districts (2021)
- SPCSA New School Enrollment (2021)
- SPCSA School Enrollment Changes by FRL, IEP, and ELL (2020 vs. 2021)
- Conclusions

# Annual Nevada Enrollment Data: “Validation Day”



- Annually on October 1<sup>st</sup>, the Nevada Department of Education (NDE) takes a snapshot of student enrollment across the state.
- These student-level enrollment data contain demographic information, including but not limited to race/ethnicity, free or reduced-price lunch (FRL) eligibility, whether the student has an individual education program (IEP), and English Language Learner (ELL) status.
- Data are carefully validated by LEAs and charter schools.
- These enrollment data are used by the NDE, SPCSA, LEAs, charter schools, and other stakeholders for official federal and state reporting and funding.

# SPCSA Enrollment Highlights



The official SPCSA enrollment for 2021-22 is **55,415 students.**

The SPCSA remains the **third largest LEA** in Nevada.

Close to **30%** of SPCSA students are **enrolled at Title I schools.**

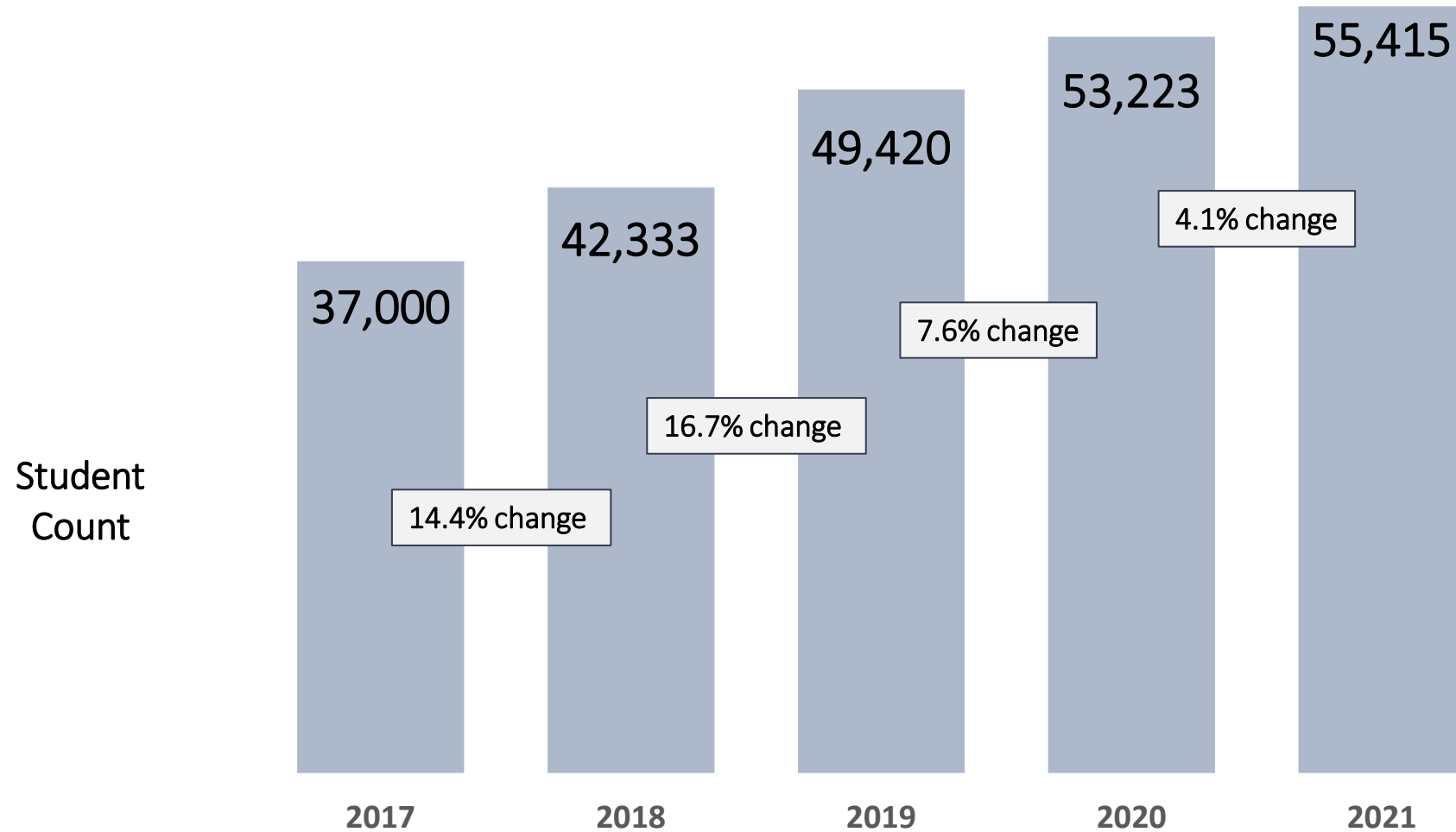
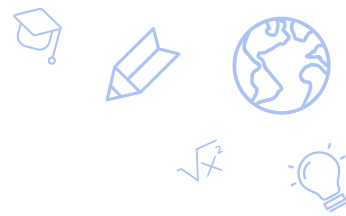
Year over year, SPCSA enrollment rates...

**Increased** for students identifying as **Asian, Black/African American, Two or More Races, or Hispanic/Latino.**

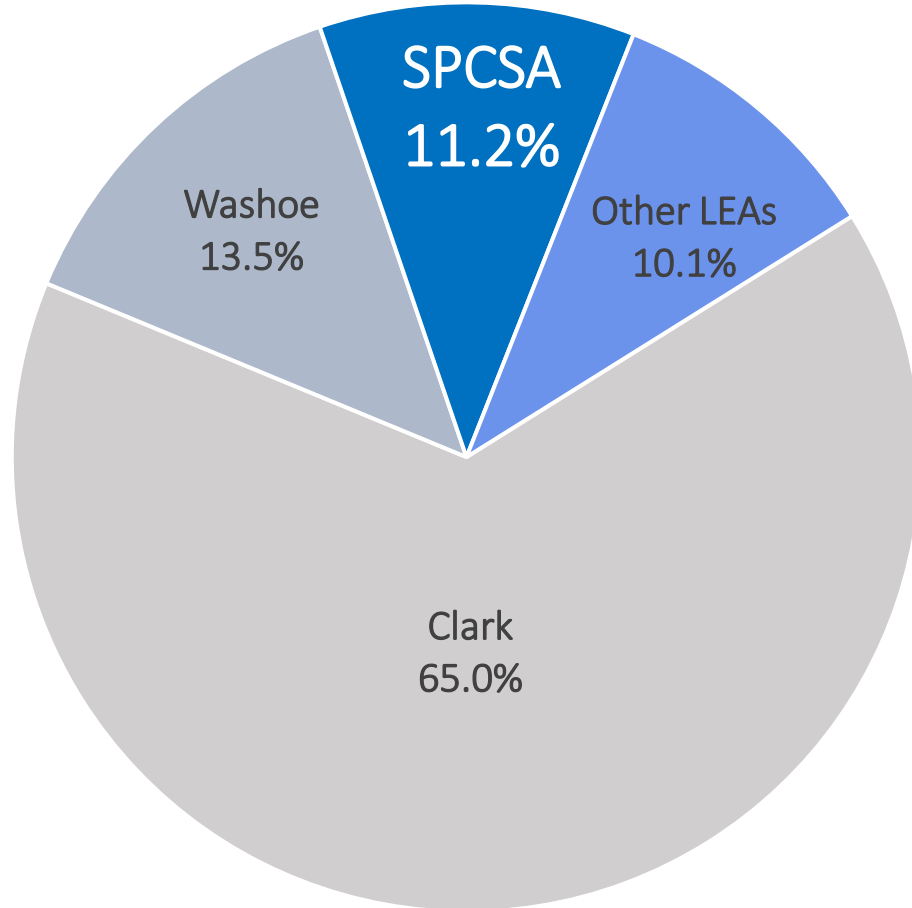
**Increased** for economically disadvantaged students (**FRL**), students with disabilities (**IEP**), and English Language Learners (**ELLs**).

**Decreased** for students identifying as **White.**

# SPCSA Total Enrollment

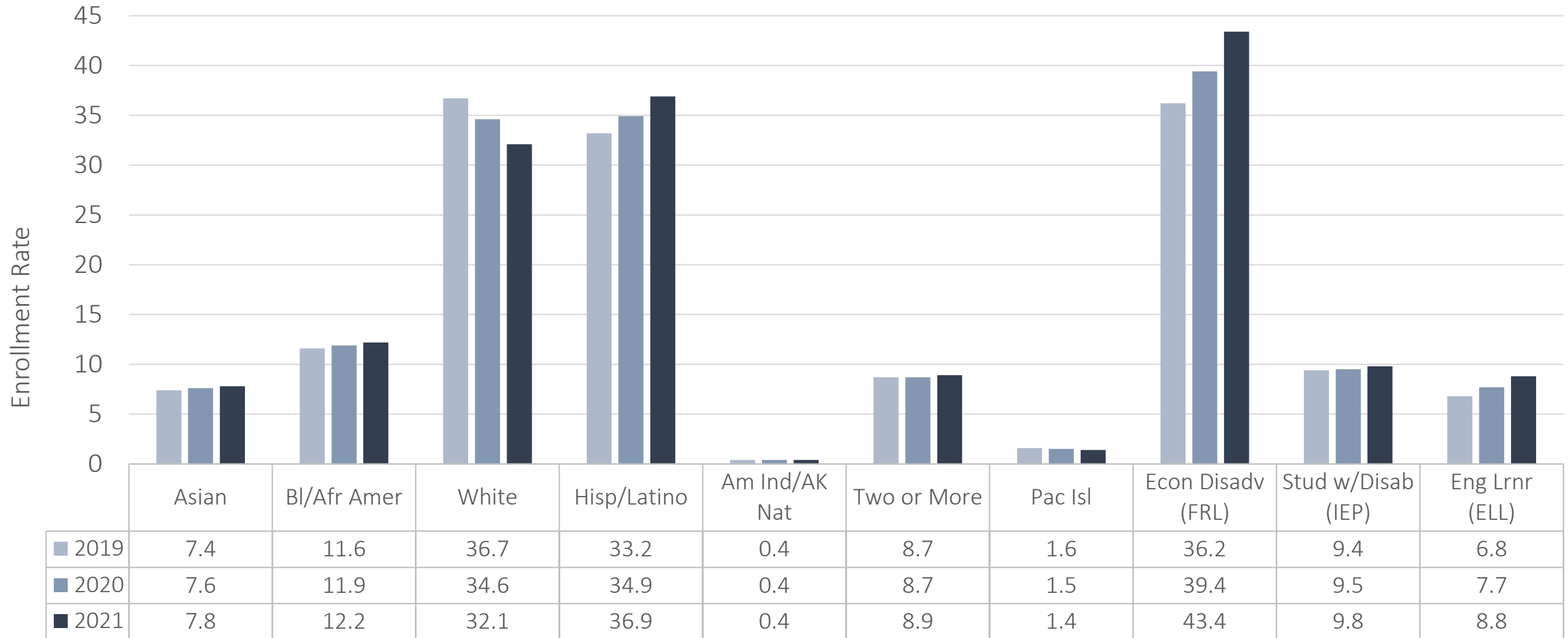


# 2021 Enrollment Across Nevada

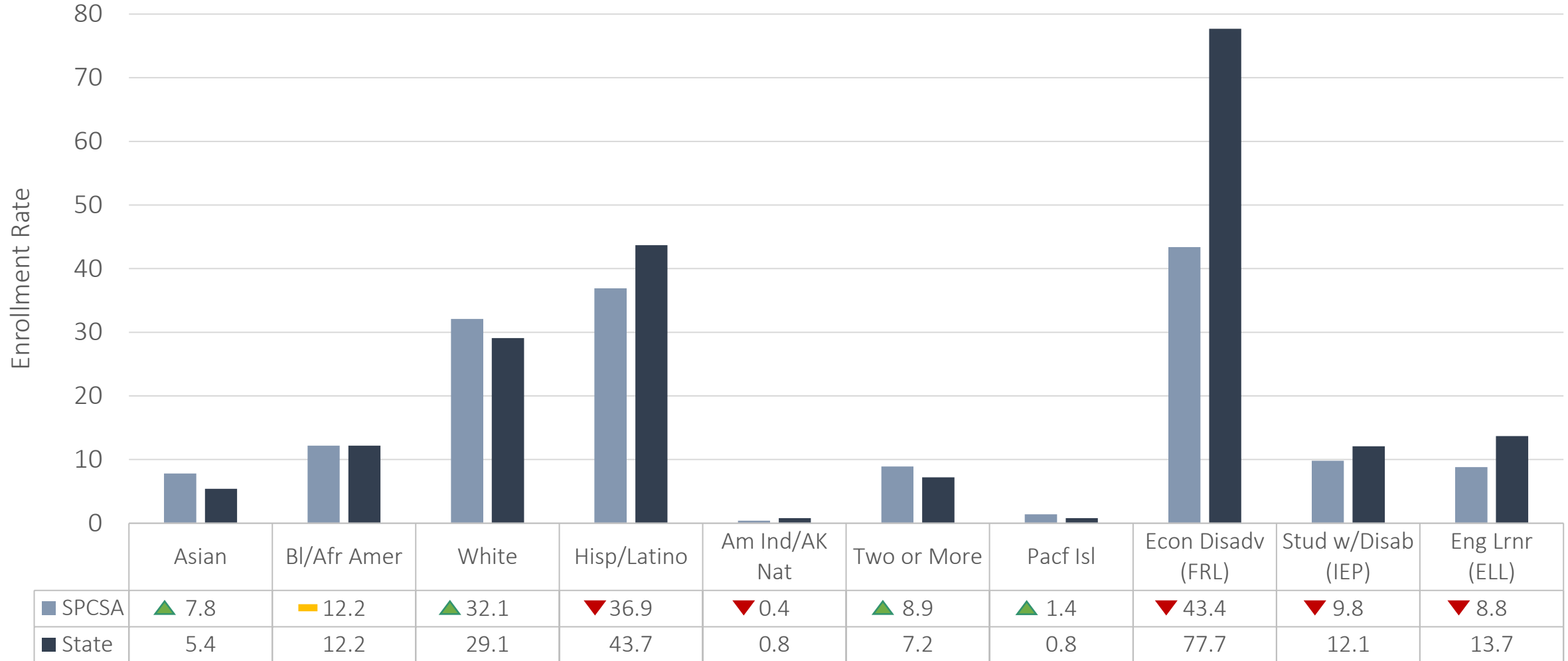
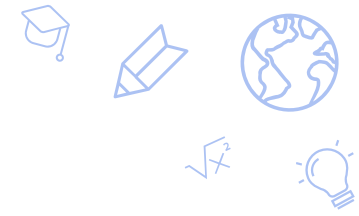


Entity	# Enrolled	% of State
<b>STATE</b>	<b>492338</b>	<b>-</b>
Clark	320245	65.0%
Washoe	66541	13.5%
<b>SPCSA</b>	<b>55415</b>	<b>11.2%</b>
Elko	9943	2.0%
Lyon	8937	1.8%
Carson	7822	1.5%
Nye	5627	1.1%
Douglas	5397	1.0%
Humboldt	3387	0.6%
Churchill	3360	0.6%
White Pine	1272	0.2%
Lander	1030	0.2%
Lincoln	942	0.1%
Pershing	686	0.1%
Mineral	612	0.1%
Storey	433	<0.1%
Eureka	348	<0.1%
University	229	<0.1%
Esmeralda	83	<0.1%
Correctional	29	<0.1%

# SPCSA Student Group Enrollment Trends



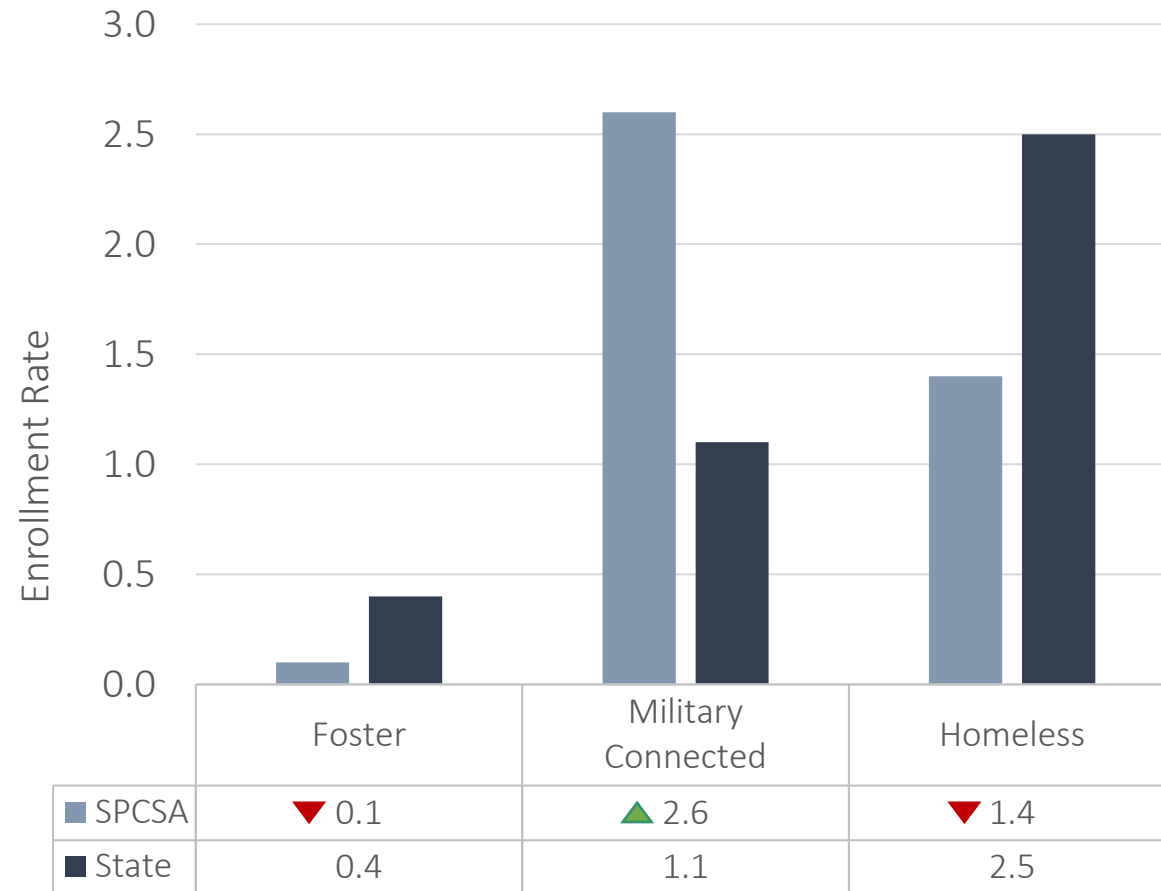
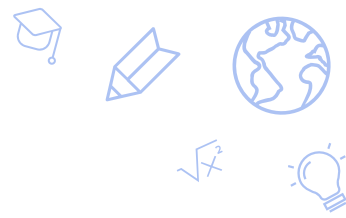
# 2021 SPCSA vs. State Student Group Enrollment



Enrollment rates are from the Nevada Department of Education (NDE) October 1 2021 validation day. Up triangles (green) signify a rate above the state group, dashes (yellow) a rate equal to the state group, and down triangles (red) a rate below the state group.

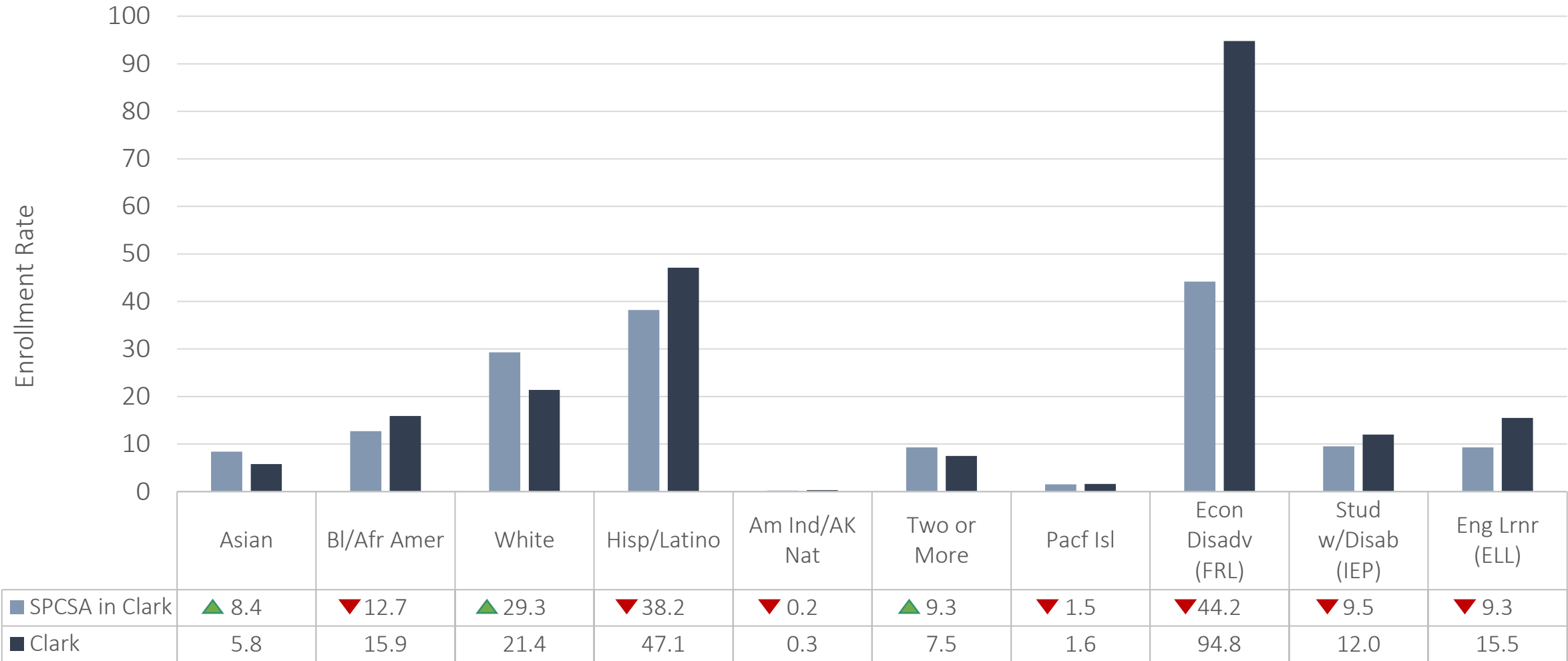
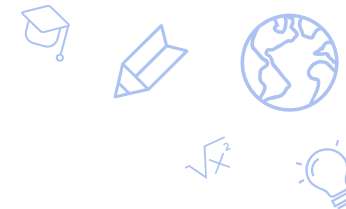


# 2021 SPCSA vs. State Student Group Enrollment

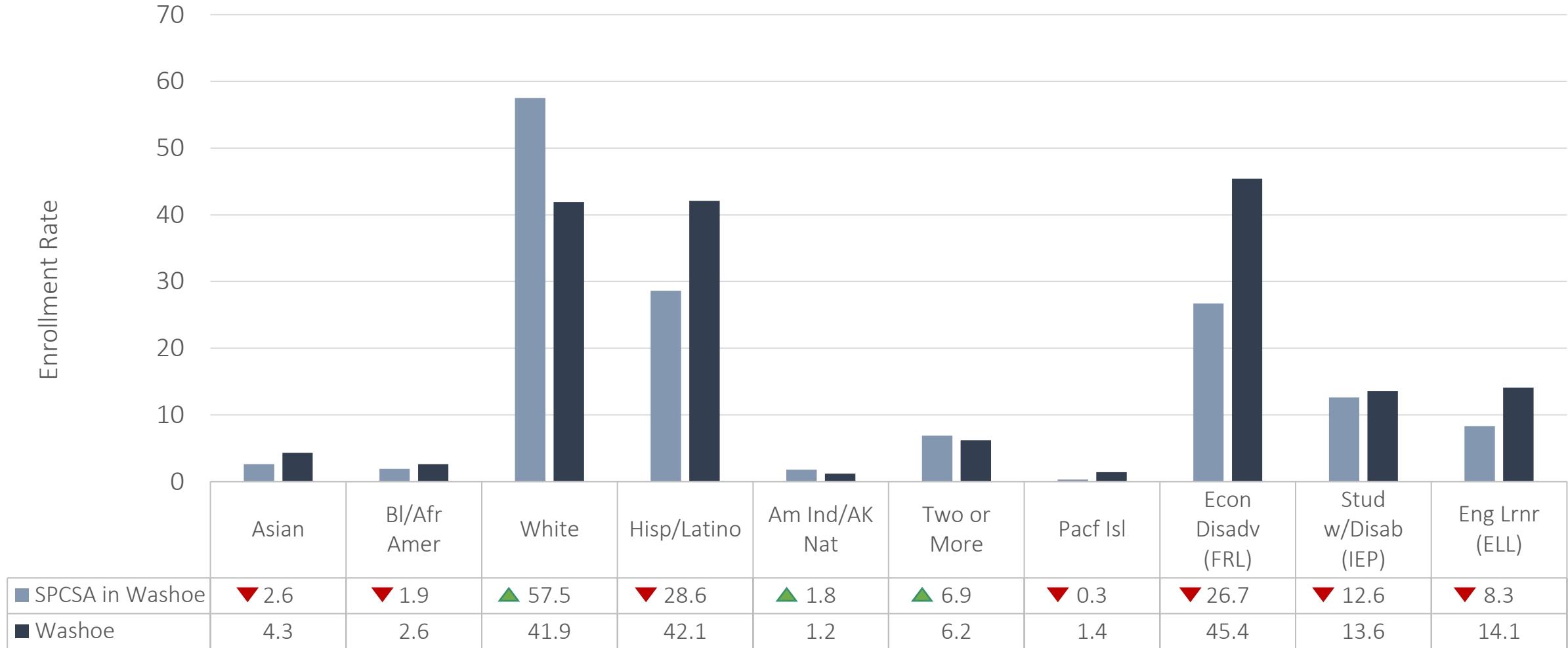
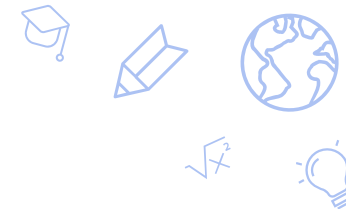


Enrollment rates are from the Nevada Department of Education (NDE) October 1 2021 validation day. Up triangles (green) signify a rate above the state group, while down triangles (red) signify a rate below the state group.

# 2021 SPCSA Schools in Clark vs. Clark

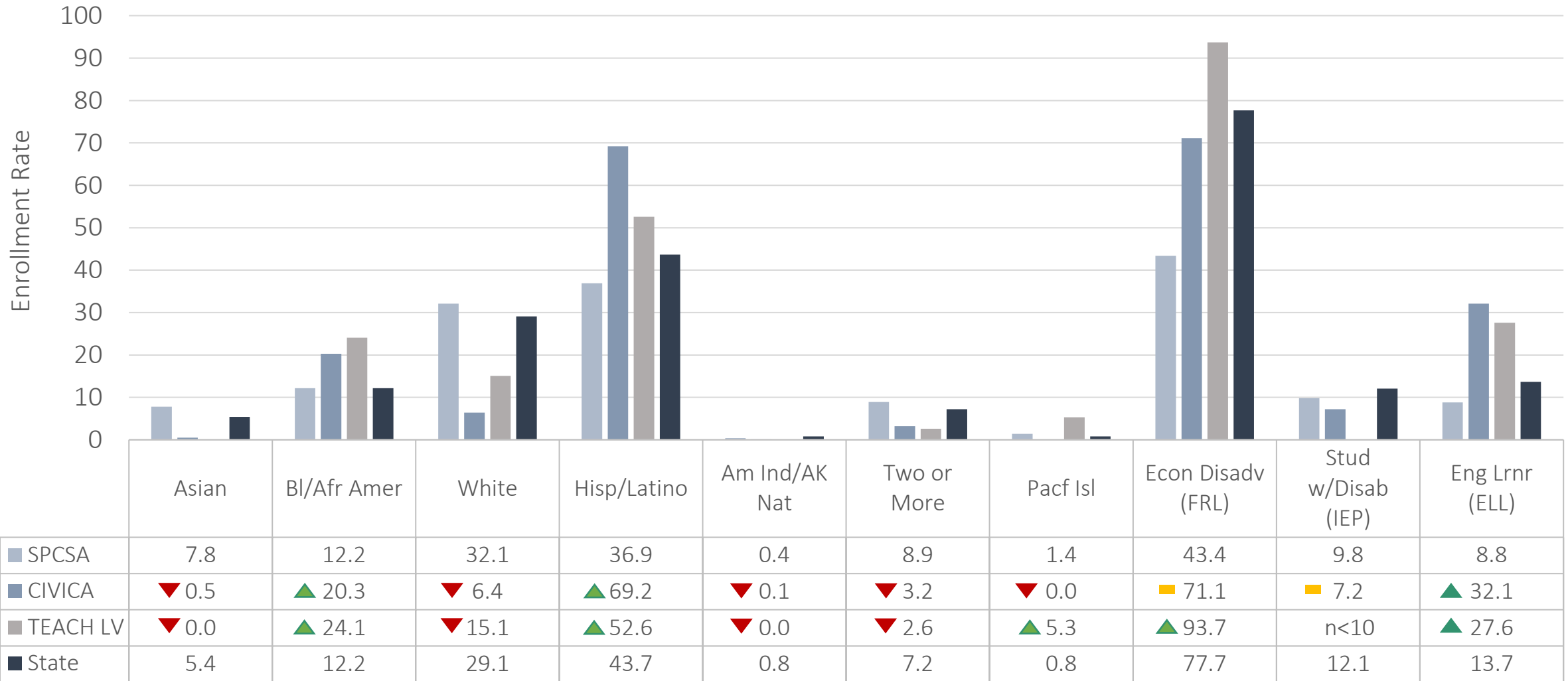


# 2021 SPCSA Schools in Washoe vs. Washoe



Enrollment rates are from the Nevada Department of Education (NDE) October 1 2021 validation day. Up triangles (green) signify a rate above the local district and down triangles (red) signify a rate below the local district.

# 2021 New SPCSA School Enrollment



Enrollment rates are from the Nevada Department of Education (NDE) October 1 2021 validation day. Up triangles (green) signify a rate above the SPCSA and state group, dashes (yellow) a rate between the SPCSA and state group, and down triangles (red) a rate below the SPCSA and state group. To protect student privacy, rates for groups with <10 students are noted with "n<10".

# SPCSA Enrollment Changes by FRL, IEP, and ELL: 2020 vs. 2021



≥ 25% Percent Change from 2020 to 2021

## FRL

School	2020 FRL	2021 FRL	% Change
CASLV Nellis AFB	16.5	29.6	<b>79.3</b>
CASLV Tamarus	17.3	30.3	<b>75.1</b>
CASLV Sandy Ridge	16.3	28.0	<b>71.7</b>
Learning Bridge	5.1	8.7	<b>70.5</b>
CASLV Windmill	17.5	28.7	<b>64.0</b>
CASLV Eastgate	24.6	38.6	<b>56.9</b>
Signature Prep	41.8	64.4	<b>54.0</b>
Amplus Rainbow	27.1	41.6	<b>53.5</b>
Amplus Durango	23.1	31.7	<b>37.2</b>
Elko Institute	30.5	41.8	<b>37.0</b>
Imagine Mtn View	27.4	36.0	<b>31.3</b>
Doral Cactus	14.1	18.5	<b>31.2</b>
NSHS Henderson	18.1	23.2	<b>28.1</b>

## IEP

School	2020 IEP	2021 IEP	% Change
Leadership Acad	5.2	8.3	<b>59.6</b>
GALS	11.4	17.4	<b>52.6</b>
Equipo Acad	5.5	7.8	<b>41.8</b>
CASLV Windmill	4.4	5.8	<b>31.8</b>

## ELL

School	2020 ELL	2021 ELL	% Change
Amplus Rainbow	7.2	17.9	<b>148.6</b>
Nevada Virtual Acad	2.1	3.7	<b>76.1</b>
Doral Fire Mesa	2.3	4.0	<b>73.9</b>
Doral Red Rock	2.3	3.7	<b>60.8</b>
Doral Cactus	2.1	3.0	<b>42.8</b>
Amplus Durango	3.7	5.1	<b>37.8</b>
Somerset Skye Canyon	2.0	2.7	<b>35.0</b>
Somerset Stephanie	3.1	4.1	<b>32.2</b>
Pinecrest Horizon	1.4	1.8	<b>28.5</b>



# SPCSA Enrollment Conclusions

- The official SPCSA enrollment for the 2021-22 school year is 55,415 students—a 4.1% increase over the 2020-21 school year.
- The SPCSA remains the third largest local education agency (LEA) in Nevada.
- Close to 30% of SPCSA students are enrolled at Title I schools.
- Year over year, SPCSA enrollment rates:
  - Increased for students identifying as Asian, Black/African American, or Hispanic/Latino.
  - Increased for economically disadvantaged students (FRL), students with disabilities (IEP), and English Language Learners (ELLs).
  - Decreased for students identifying as White.
- The SPCSA aims to serve a population representative of the state and the districts its schools are located within.
  - Despite year over year rate increases, the SPCSA continues to serve proportionately:
    - Fewer students identifying as Hispanic/Latino than the state.
    - Fewer economically disadvantaged students (FRL), students with disabilities (IEP), and English Language Learners (ELLs) than the state.
  - However, as evidenced by new school enrollment data, the SPCSA is making progress toward that goal.

# Thank you!

[charterschools.nv.gov](http://charterschools.nv.gov)

