



SPCSA

School Year 2021-22

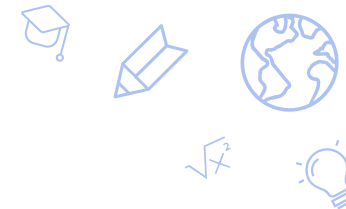
Student Enrollment



December 3, 2021

ATTACHMENT





Glossary of Acronyms

ELL	English Language Learners
FERPA	Family Educational Rights and Privacy Act (federal law protecting student privacy)
FRL	Free and Reduced-Price Lunch for economically disadvantaged students
IEP	Individualized Education Programs for students with disabilities
LEA	Local Educational Agency (School District)
NSPF	Nevada School Performance Framework (annual school star ratings)
SPCSA	State Public Charter School Authority
SY	School Year

2021 Enrollment Data by School



Entity	Oct 1 2021 Enrollment	Asian	Bl/Afr Amer	White	Hisp/Latino	Amer Ind/AK Native	Two or More	Pacific Islander	Econ Disadv (FRL)	Stud w/Disab (IEP)	Eng Lrn (ELL)
STATE	492338	5.4	12.2	29.1	43.7	0.8	7.2	0.8	77.7	12.1	13.7
SPCSA	55415	7.8	12.2	32.1	36.9	0.4	8.9	1.4	43.4	9.8	8.8
Alpine Acad	135	0.7	0.7	60.7	31.1	2.9	2.2	1.4	8.1	14.0	*
Amplus Durango	1570	19.8	17.3	33.8	18.8	0.1	6.8	3.1	31.7	5.4	5.1
Amplus Rainbow	673	24.6	32.0	20.2	13.8	0.4	7.7	1.0	41.6	<5.0	17.9
Beacon Acad	355	3.0	25.9	19.1	43.9	0.2	6.7	0.8	67.0	24.7	14.6
CASLV Centennial	651	10.5	8.4	41.3	27.3	0.3	10.5	1.3	31.4	5.5	<5.0
CASLV Eastgate	637	24.6	6.4	29.6	25.5	0.3	10.8	2.5	38.6	8.6	<5.0
CASLV Nellis AFB	860	4.1	16.5	37.3	28.1	0.4	12.0	1.2	29.6	7.9	*
CASLV Sandy Ridge	842	25.6	6.5	37.2	16.6	0.1	11.6	2.1	28.0	<5.0	<5.0
CASLV Tamarus	395	29.1	7.8	31.1	17.4	0.0	12.9	1.5	30.3	6.5	8.8
CASLV Windmill	396	27.7	5.3	37.6	15.4	0.2	12.3	1.2	28.7	5.8	5.0
CIVICA	576	0.5	20.3	6.4	69.2	0.1	3.2	0.0	71.1	7.2	32.1
Democracy Prep	1147	0.4	63.2	2.0	31.6	0.0	2.2	0.2	>95.0	8.6	8.2
Discovery Hillpointe	359	2.5	6.6	40.3	36.2	0.8	12.2	1.1	16.9	8.9	<5.0
Discovery Sandhill	101	1.9	14.8	20.7	54.4	0.0	5.9	1.9	31.6	*	10.8
Doral Cactus	982	13.1	6.0	42.8	21.1	0.3	14.7	1.7	18.5	8.1	<5.0

Enrollment data are from the Nevada Department of Education (NDE) October 1 2021 validation day. Numbers shown are rates except for the total enrollment column (2nd from left). To protect student privacy, rates associated with populations less than 10 students are displayed with an asterisk (*), and extreme values less than 5 or greater than 95 percent are shown as <5 and >95, respectively.

2021 Enrollment Data by School (continued)



Entity	Oct 1 2021 Enrollment	Asian	Bl/Afr Amer	White	Hisp/Latino	Amer Ind/AK Native	Two or More	Pacific Islander	Econ Disadv (FRL)	Stud w/Disab (IEP)	Eng Lrn (ELL)
STATE	492338	5.4	12.2	29.1	43.7	0.8	7.2	0.8	77.7	12.1	13.7
SPCSA	55415	7.8	12.2	32.1	36.9	0.4	8.9	1.4	43.4	9.8	8.8
Doral Fire Mesa	980	4.7	10.0	34.8	38.1	0.2	10.2	1.7	36.9	12.0	<5.0
Doral Northern Nevada	925	4.8	0.3	71.0	14.9	0.1	8.6	0.1	6.4	10.8	*
Doral Pebble	976	21.0	9.9	33.4	21.8	0.0	12.7	1.1	24.4	8.1	<5.0
Doral Red Rock	2189	8.9	5.9	49.5	24.5	0.4	9.1	1.2	24.0	10.7	<5.0
Doral Saddle	983	15.0	8.9	34.8	24.8	0.1	14.6	1.5	30.7	9.3	<5.0
Elko Institute	196	2.5	3.0	59.1	25.5	0.5	9.1	0.0	41.8	15.8	*
Equipo Acad	832	0.4	1.0	1.6	96.2	0.0	0.2	0.2	>95.0	7.8	30.2
Explore Acad	192	4.1	19.2	39.0	29.6	1.0	6.7	0.0	46.3	14.5	5.2
Founders Acad	900	3.8	7.5	39.6	38.6	0.3	9.8	0.0	23.7	5.2	6.8
Freedom Classical Acad	1013	6.6	13.2	22.3	49.6	0.3	6.0	1.7	39.8	10.6	11.1
Futuro Acad	476	1.0	7.5	5.0	83.1	0.0	2.9	0.2	>95.0	7.3	46.4
GALS	103	2.9	26.2	6.7	52.4	0.0	9.7	1.9	>95.0	17.4	21.3
Honors Acad of Lit.	220	1.3	2.2	62.7	26.3	0.0	6.8	0.4	12.7	16.8	*
Imagine Mountain View	654	5.9	18.8	24.9	35.4	0.4	13.1	1.2	36.0	11.9	12.2
Leadership Acad	287	2.7	4.5	56.4	25.0	0.6	10.1	0.3	25.4	8.3	*

2021 Enrollment Data by School (continued)



Entity	Oct 1 2021 Enrollment	Asian	Bl/Afr Amer	White	Hisp/Latino	Amer Ind/AK Native	Two or More	Pacific Islander	Econ Disadv (FRL)	Stud w/Disab (IEP)	Eng Lrn (ELL)
STATE	492338	5.4	12.2	29.1	43.7	0.8	7.2	0.8	77.7	12.1	13.7
SPCSA	55415	7.8	12.2	32.1	36.9	0.4	8.9	1.4	43.4	9.8	8.8
Learning Bridge	195	0.5	0.0	67.1	22.5	2.0	7.6	0.0	8.7	12.3	*
Legacy Cadence	1393	7.0	8.3	35.9	36.1	0.0	10.7	1.6	49.6	8.3	5.0
Legacy North Valley	1346	3.1	22.3	17.6	42.8	0.1	11.7	2.0	54.5	5.5	8.3
Legacy Southwest	1531	29.9	12.0	21.3	21.5	0.3	12.8	1.8	40.5	<5.0	7.9
Mater Bonanza	1074	0.6	6.2	3.5	86.5	0.2	1.9	0.7	>95.0	8.4	38.9
Mater East	1573	0.8	11.7	4.5	79.3	0.1	2.7	0.6	>95.0	10.9	40.7
Mater Mountain Vista	1057	2.7	9.0	6.0	76.9	0.1	3.9	1.0	>95.0	9.9	35.2
Mater Northern Nevada	483	1.4	5.1	14.6	72.2	3.1	3.3	0.0	>95.0	14.6	38.0
NSHS Downtown	54	7.4	22.2	5.5	55.5	0.0	7.4	1.8	70.3	*	*
NSHS Dtnw Henderson	106	4.7	1.8	66.9	19.8	0.0	5.6	0.9	13.2	*	0.0
NSHS Henderson	258	10.4	3.1	52.3	25.1	0.0	7.7	1.1	23.2	*	*
NSHS Meadowood	50	6.0	2.0	54.0	18.0	2.0	12.0	6.0	*	*	0.0
NSHS Northwest	118	5.0	15.2	37.2	29.6	0.8	10.1	1.6	26.2	*	*
NSHS Southwest	121	11.5	28.9	23.9	23.1	0.0	9.9	2.4	41.3	*	*
NSHS Summerlin	176	9.6	14.2	34.6	35.2	0.0	5.6	0.5	38.6	*	*

2021 Enrollment Data by School (continued)



Entity	Oct 1 2021 Enrollment	Asian	Bl/Afr Amer	White	Hisp/Latino	Amer Ind/AK Native	Two or More	Pacific Islander	Econ Disadv (FRL)	Stud w/Disab (IEP)	Eng Lrn (ELL)
STATE	492338	5.4	12.2	29.1	43.7	0.8	7.2	0.8	77.7	12.1	13.7
SPCSA	55415	7.8	12.2	32.1	36.9	0.4	8.9	1.4	43.4	9.8	8.8
NSHS Sunrise	80	2.5	13.7	10.0	60.0	2.5	10.0	1.2	56.2	*	*
NV Connections Acad	1114	2.6	12.2	44.8	28.1	1.0	9.6	1.3	46.8	11.8	<5.0
NV Prep	215	1.8	26.9	6.5	63.7	0.0	0.0	0.9	>95.0	11.1	28.8
NV Rise	369	2.4	26.0	6.2	53.6	0.5	10.0	1.0	>95.0	6.7	11.3
NV Virtual Acad	2027	5.4	21.5	37.2	31.9	1.1	0.0	2.6	56.7	11.4	<5.0
Oasis ACAD	714	2.2	2.3	65.6	20.0	2.2	7.1	0.2	28.4	11.7	<5.0
Pinecrest Cadence	2078	5.5	6.0	44.5	30.6	0.4	10.6	2.1	32.3	13.7	<5.0
Pinecrest Horizon	871	3.5	6.7	45.5	33.2	0.2	9.4	1.1	32.3	11.1	<5.0
Pinecrest Inspirada	1186	13.4	3.7	45.9	21.0	0.3	13.3	2.0	13.3	9.1	<5.0
Pinecrest Northern NV	868	1.4	1.9	65.5	19.8	3.3	7.4	0.3	14.6	12.9	<5.0
Pinecrest Sloan	1706	15.8	5.0	36.2	25.3	0.2	14.8	2.2	17.3	10.0	<5.0
Pinecrest St Rose	1008	13.9	8.1	34.8	27.1	0.1	12.7	2.8	28.0	7.3	<5.0
Quest Northwest	475	2.1	50.1	11.7	26.5	1.2	7.3	0.8	>95.0	8.6	8.8
Signature Prep CS	971	6.7	10.8	30.1	40.2	0.4	10.4	1.1	64.4	11.8	7.5
Silver Sands	259	6.5	4.6	32.0	43.2	0.7	12.3	0.3	37.8	11.5	5.7

2021 Enrollment Data by School (continued)



Entity	Oct 1 2021 Enrollment	Asian	Bl/Afr Amer	White	Hisp/Latino	Amer Ind/AK Native	Two or More	Pacific Islander	Econ Disadv (FRL)	Stud w/Disab (IEP)	Eng Lrnr (ELL)
STATE	492338	5.4	12.2	29.1	43.7	0.8	7.2	0.8	77.7	12.1	13.7
SPCSA	55415	7.8	12.2	32.1	36.9	0.4	8.9	1.4	43.4	9.8	8.8
SLAM	1626	2.7	12.0	15.4	57.3	0.2	9.3	2.8	58.3	10.5	10.2
Somerset Aliante	1120	4.8	11.5	32.7	37.5	0.1	10.5	2.5	23.4	15.2	<5.0
Somerset Lone Mtn	986	2.8	6.7	42.4	37.7	0.3	8.7	1.1	24.2	12.5	<5.0
Somerset Losee	2195	3.9	20.2	13.3	52.9	0.2	7.6	1.5	45.1	10.7	9.2
Somerset NLV	1205	4.4	26.1	17.1	40.7	0.0	10.4	0.9	47.1	11.4	9.8
Somerset Sky Pointe	2138	3.3	7.2	50.8	27.6	0.3	9.3	1.2	20.7	12.1	<5.0
Somerset Skye Canyon	995	5.1	4.6	52.9	22.9	0.2	13.1	1.0	15.0	11.1	<5.0
Somerset Stephanie	957	5.2	7.7	38.3	35.1	0.5	11.0	1.9	30.6	14.9	<5.0
TEACH Las Vegas	112	0.0	24.1	15.1	52.6	0.0	2.6	5.3	93.7	*	27.6