

Pinecrest of Northern Nevada Charter Addendum based on AB462

Identified Academic Need

As shown in the *2019 Academic and Demographic Needs Assessment*, zip code 89441 has been identified as an area with an identified academic need. In addition, it is anticipated that Pinecrest Academy of Northern Nevada will enroll a significant number of students from nearby zip codes that also have identified academic needs such as 89433 and 89431.

Enrollment at other charter schools in Washoe County has shown that enrollment is not limited to the zip code in which the school is located. For example, in the 2019-2020 school year 75% of students enrolled at Doral Academy of Northern Nevada will not reside in the zip code in which the school is located, and there will be students attending the school from twenty-two distinct Northern Nevada zip codes.

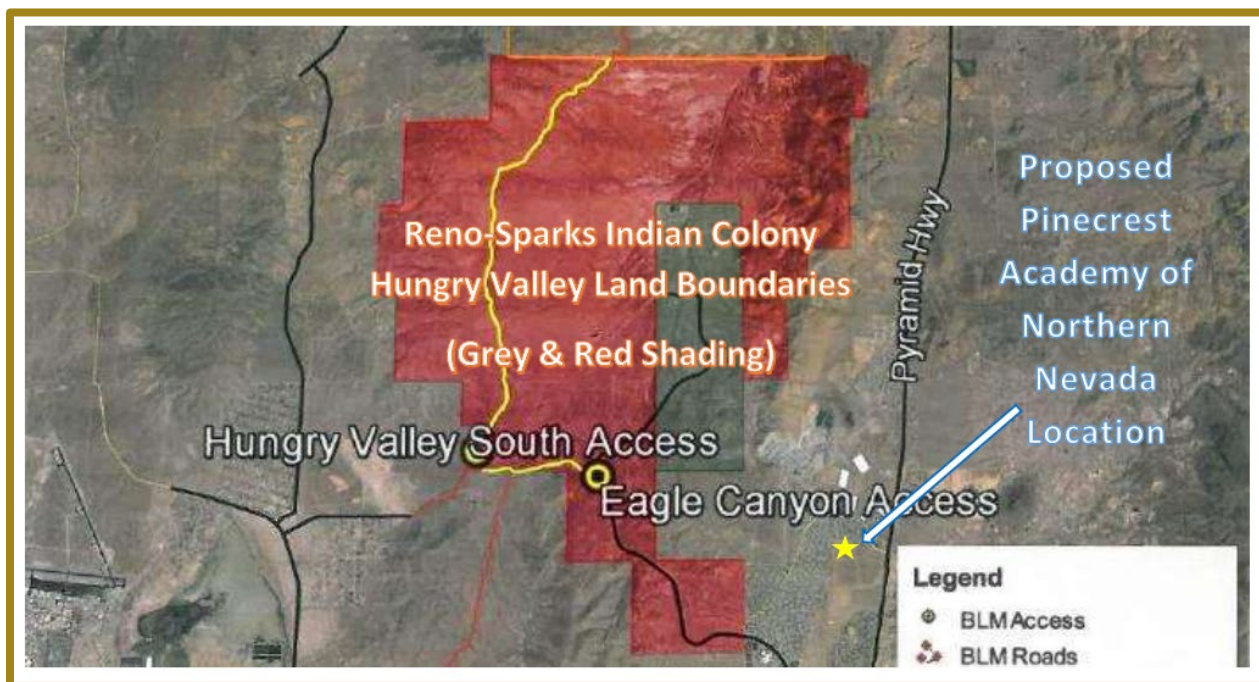
As the table shows, within a 10-mile radius of the proposed site for Pinecrest Academy of Northern Nevada, there are eighteen 1 or 2 star elementary and middle schools. The partnership with the Boys & Girls Club of Truckee Meadows will increase the services and programs the school will be able to provide, particularly for families in need, and Pinecrest Academy of Northern Nevada will provide a high quality public education for families in these areas of identified academic need.

School Name	Zip Code	Grades Served	2017-18 Star Rating	Enrollment	Distance from Proposed Site
Spanish Springs	89441	ES	2	877	1.9
Virginia Palmer	89433	ES	2	503	4.8
Esther Bennett	89433	ES	2	523	5.5
Sun Valley	89433	ES	2	651	6.1
Lois Allen	89433	ES	2	532	7.1
Florence Drake	89431	ES	2	279	7.9
Greenbrae	89431	ES	2	368	8.4
Sparks	89431	MS	2	769	8.4
George L. Dilworth S.T.E.M. Academy	89431	MS	2	712	8.8
Lincoln Park	89431	ES	2	370	9
Robert Mitchell	89431	ES	2	361	9.1
Kate Smith	89431	ES	2	308	9.3
Alice Smith	89506	ES	2	766	7.8
Desert Heights	89506	ES	1	507	9
Stead	89506	ES	1	717	9.3
William O'Brien S.T.E.M. Academy	89506	MS	2	828	9.4

Fred W. Traner	89512	MS	1	781	9.6
Glen Duncan S.T.E.M. Academy	89512	ES	1	411	9.7

Demographic Need

PANN's proposed location is within very close proximity (approx. 1.5 miles) of the Reno-Sparks Indian Colony Hungry Valley Tribal Lands. Please see the image below:



This proximity will provide a high quality tuition-free public K-8 school option for Native American families whose children have been consistently underserved by WCSD schools.

American Indian students are a population that has persistently underperformed in the Washoe County School District. Not only has this student group consistently underperformed, when compared to the overall student achievement of Washoe County, it has also underperformed as compared to all other race/ethnicity subgroups on most metrics. Indeed, as noted in the *2019 Academic and Demographic Needs Assessment*, "analysis of data from the Nevada Department of Education showed that Black, Hispanic, and American Indian/Alaskan Native students underperformed relative to the average Nevada student in the 2015-16, 2016-17, and 2017-18 school years according to graduation rate, ACT Assessment, and the Smarter Balanced Assessment (in both math and ELA)."

Within the WCSD, overall ELA Median Student Growth Percentile for American Indian students in 2017-2018 lagged behind the county as a whole by 6 points (46 vs. 53) and overall Math Median Student Growth Percentile in 2017-2018 lagged by 9 points (46 vs. 55). Only 18% of American Indian students in WCSD were meeting ELA Adequate Growth Percentile targets in order to be meeting grade level standards within 3 years, compared to 34% of all WCSD students. This underperformance is even more pronounced in Math growth, in which only 9% of American Indian

students in WCSD were meeting ELA Adequate Growth Percentile targets in order to be meeting grade level standards within 3 years, compared to 25% of all WCSD students.

As part of the marketing plan, the PANN Board plans to reach out to tribal leaders to inform them of this school and help create partnerships between the Reno-Sparks Indian Colony and the school. PANN's Governing Board and proposed administration team look forward to bringing Pinecrest Academy's proven educational model to serve Northern Nevada students in these designated areas of academic and demographic need.