



SPCSA

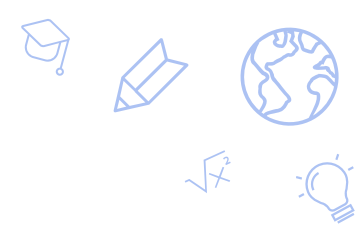
Academic Performance Framework



Training for Charter School Staff

August 2021





About Us

- The SPCSA Accountability/Assessment team provides high-quality customer service to ensure (1) schools meet federal/state assessment and accountability deadlines and (2) schools submit accurate data. We always aim to be proactive, communicative, honest, friendly, and respectful.



Overview

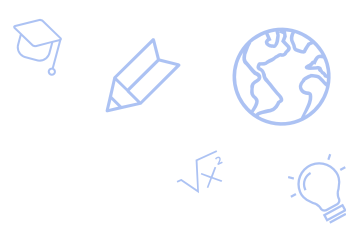
Outcomes

- Enhance knowledge of SPCSA Academic Performance Framework, including:
 - Its purpose.
 - The performance it measures.
- Know how to interpret an Academic Framework report.
- Know where to find additional information on the Academic Framework, if needed.

Agenda

- 1) Purpose/History of Academic Framework
- 2) Academic Framework Overview
- 3) Academic Framework Indicators and Measures
- 4) Academic Framework Reports
- 5) Resources

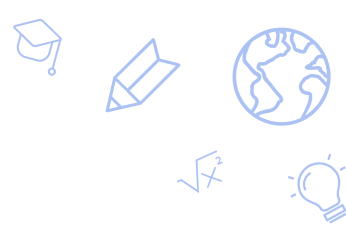
Purpose of SPCSA Academic Framework



- Nevada Revised Statute (NRS) requires charter school sponsors like the SPCSA to include an academic performance framework in charter contracts.
- Performance frameworks are used by charter school authorizers across the nation to:
 - Provide charter school boards/leaders and the public with clear expectations, fact-based oversight, and timely feedback—all while ensuring charter autonomy.
 - Provide additional information and data point(s) that inform authorizing decisions.
- Helps the SPCSA meet the goals outlined in our 2019-24 Strategic Plan.
 - Indicators and measures within the SPCSA Academic Performance Framework are aligned with the strategic plan goals to:
 - Provide families with access to high-quality schools.
 - Ensure that every SPCSA student succeeds – including those from historically underserved student groups.
 - Increase the diversity of students served by SPCSA schools.

¹See [NRS 388A.273](#).

History of SPCSA Academic Framework

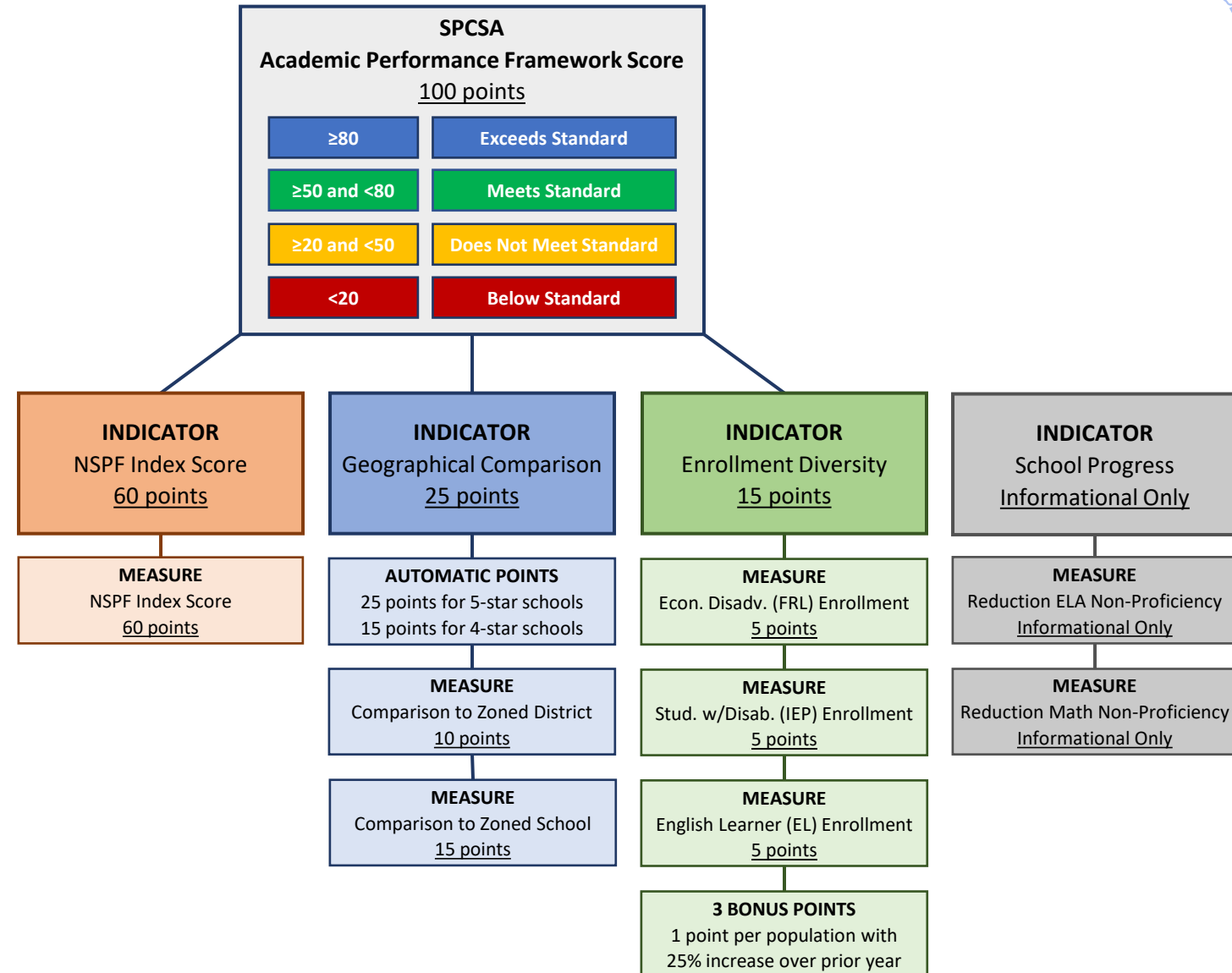


- Designed with significant stakeholder input, including SPCSA charter school leaders, members of the NDE Accountability team, and the SPCSA Authority (Board), including multiple:
 - Listening sessions;
 - Academic Framework Working Group meetings; and
 - Updates to the SPCSA Board on progress.
- Approved by the SPCSA Board on June 28, 2019.
- First iteration of the Framework (for the 2018-19 school year) was informational only and released to school leaders in March 2020.
- For the 2019-20 school year, the Framework report design was updated; notably, due to COVID-19 and the resulting lack of Nevada school star ratings, schools did not receive an overall 2019-20 Framework rating.

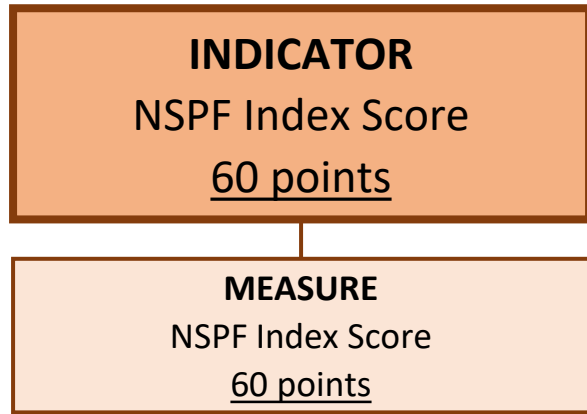
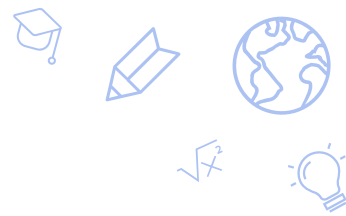
Framework Overview



- The Framework has various measures categorized under indicators.
- Schools earn points based on their performance in the measures.
- Points for measures are totaled under indicators, and indicator points are summed to a score from 1 to 100.
- The point total is then tied to one of four performance levels:
 - Exceeds Standard
 - Meets Standard
 - Does Not Meet Standard
 - Below Standard



Indicator: NSPF Index Score



The NSPF Index Score indicator has one measure of the same name.

The number of points a school earns is 60% of their NSPF adjusted index score from the most recent NSPF ratings.

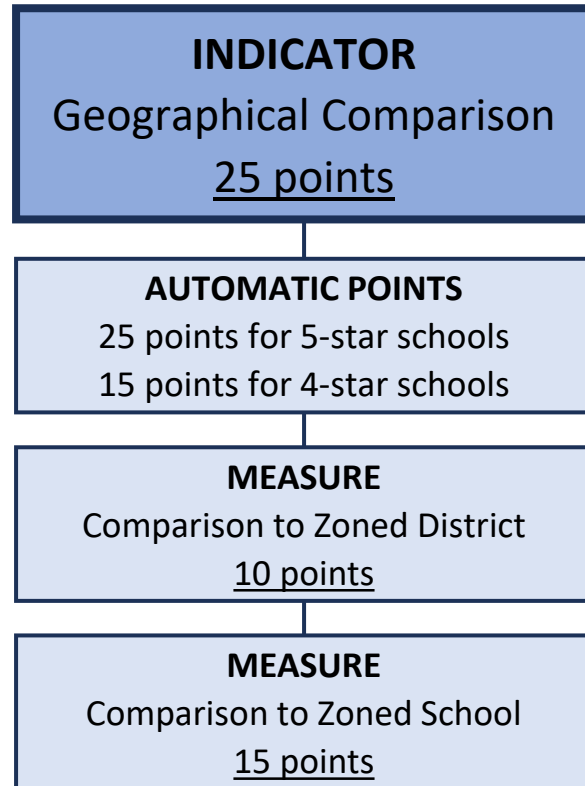
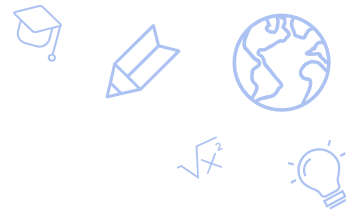
- For example, if a school's NSPF score was 90, the school would earn $90 * 0.6 = 54$ points in this measure.

The NSPF contains various measures of school performance¹, including but not limited to:

- Math, ELA, and Science proficiency and growth;
- English Learner (EL) proficiency in English;
- Graduation Rates;
- Chronic Absenteeism; and
- College and Career Readiness.

¹For more information on the NSPF, see the NDE [Technical](#) and [Procedures](#) Manuals, as well as Appendix A in this document. 7

Indicator: Geographical Comparison



The **Geographical Comparison** indicator has two measures:

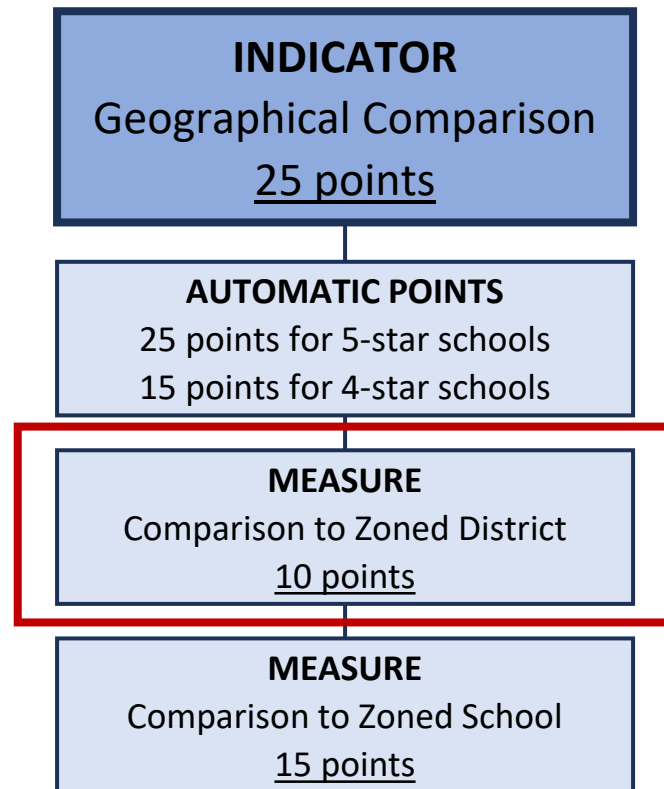
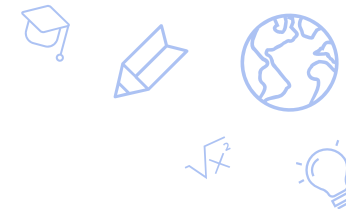
- **Comparison to Zoned District:** a comparison of the charter school NSPF score to the NSPF score of the local school district.
- **Comparison to Zoned School:** a comparison of the charter school NSPF score to the NSPF score of the local zoned school.

The larger the (positive) score differences, the more points are earned.

A charter school with a 4- or 5-star NSPF rating automatically earns 15 or 25 points, respectively, in this indicator.

- This rule allows high-performing charter schools to receive points in this indicator even if their zoned district or school is also high performing (i.e. the score difference is small).

Indicator: Geographical Comparison



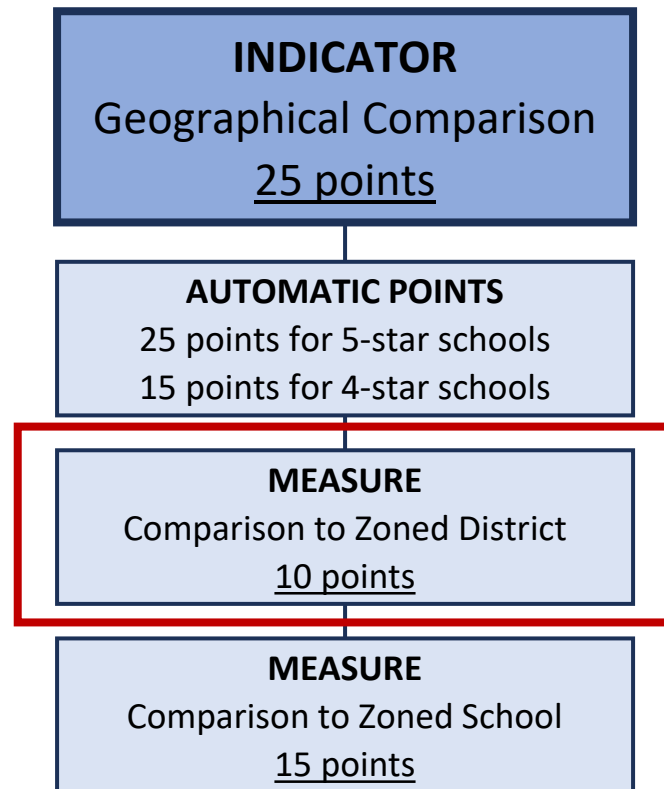
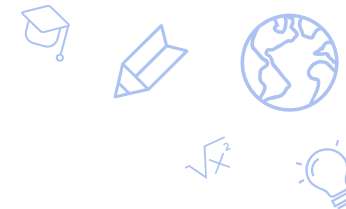
The **Comparison to Zoned District** measure compares a charter school's NSPF adjusted index score to the average NSPF adjusted index score of rated schools in the zoned district, for the relevant level (elem., middle, high).

For example, if an elementary school is located in Las Vegas and serves students from Las Vegas, its score is compared to the average NSPF adjusted index score of elementary schools in the Clark County School District.

Point table:

Geographical Comparison Indicator Comparison to Zoned District Measure (10 points possible) Point Attribution Table			
Difference in Index Score	Points	Difference in Index Score	Points
≥ 25.0	10	< 8.3 and ≥ 4.9	4
< 25.0 and ≥ 21.6	9	< 4.9 and ≥ 1.6	3
< 21.6 and ≥ 18.3	8	< 1.6 and ≥ -1.6	2
< 18.3 and ≥ 14.9	7	< -1.6 and ≥ -5.0	1
< 14.9 and ≥ 11.6	6	< -5.0	0
< 11.6 and ≥ 8.3	5		

Indicator: Geographical Comparison

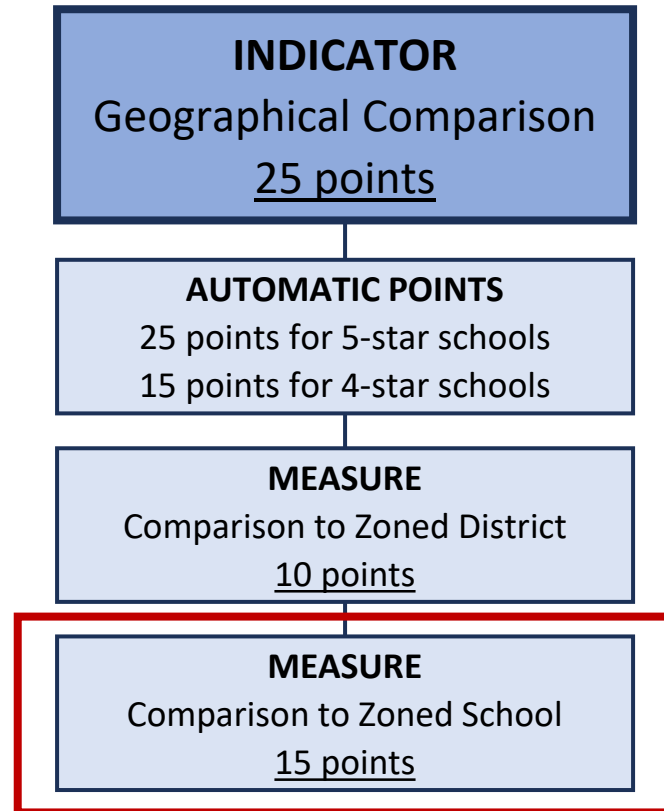
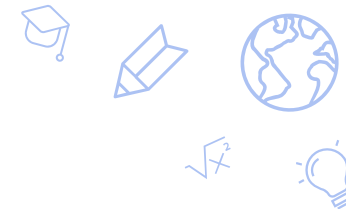


An example of tying performance to a point table:

- The Meadows Charter ES score in the NSPF: 67.5 points
- Zoned district is Clark County School District, whose average NSPF elementary school score was 50.9.
- The Meadows Charter ES score is 16.6 points better than the average CCSD ES, which corresponds to 7 points earned in this measure, using the table below.

Geographical Comparison Indicator Comparison to Zoned District Measure (10 points possible) Point Attribution Table					
Difference in Index Score		Points	Difference in Index Score		Points
≥25.0		10	<8.3 and ≥4.9		4
<25.0 and ≥21.6		9	<4.9 and ≥1.6		3
<21.6 and ≥18.3		8	<1.6 and ≥-1.6		2
<18.3 and ≥14.9		7	<-1.6 and ≥-5.0		1
<14.9 and ≥11.6		6	<-5.0		0
<11.6 and ≥8.3		5			

Indicator: Geographical Comparison



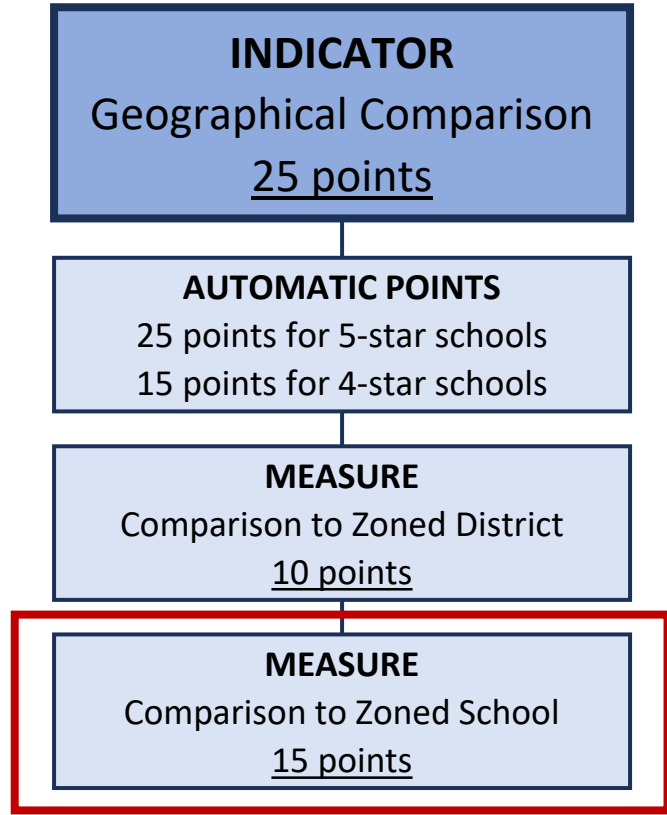
The **Comparison to Zoned School** measure compares a charter school’s NSPF adjusted index score to that of its zoned district school—the school zoned for the physical address of the charter school for the relevant school year.

Annually, the SPCSA determines each charter school’s zoned school via charter school physical addresses, district zone search tools/maps, and mapping websites.

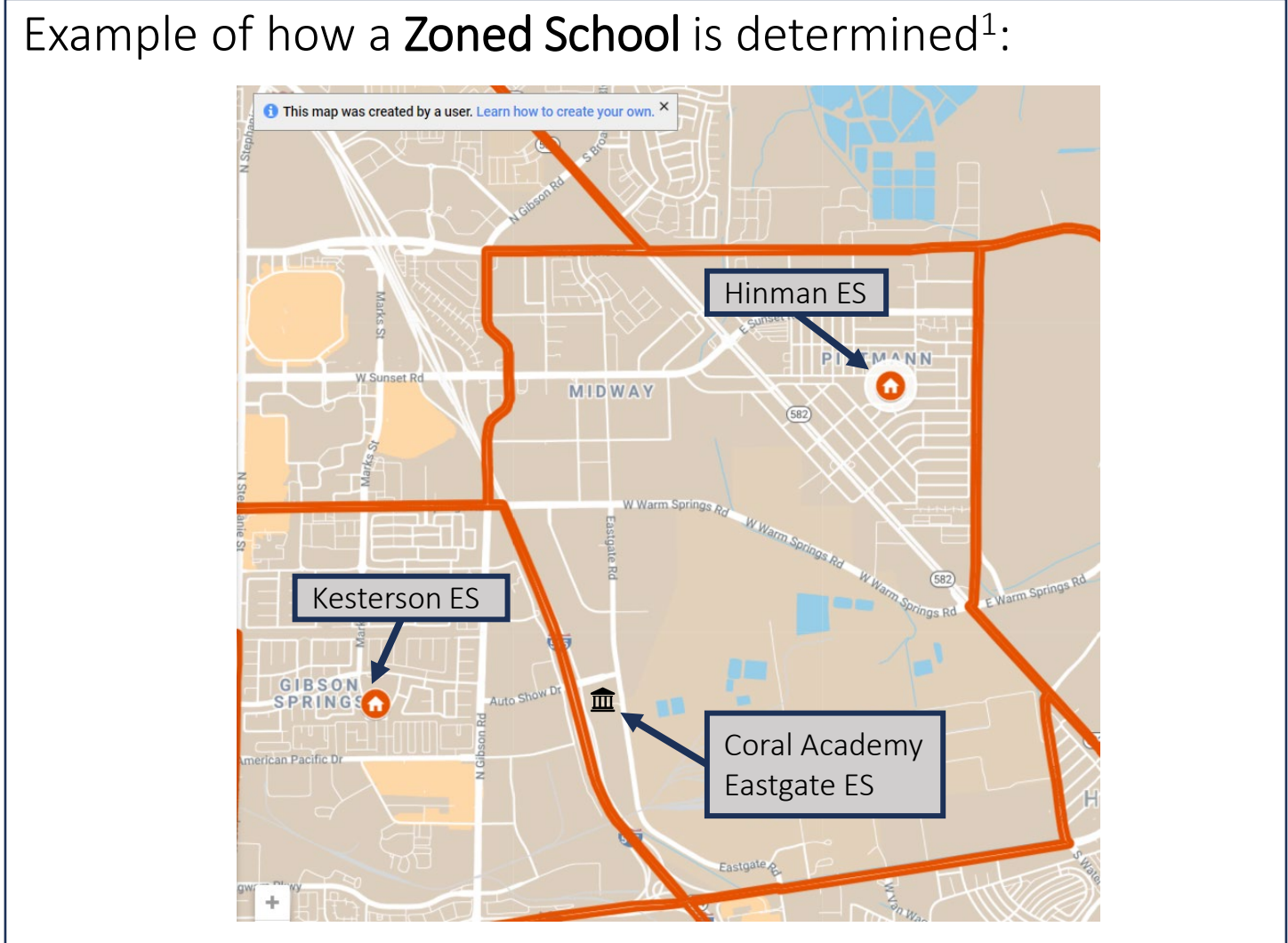
Point table:

Geographical Comparison Indicator Comparison to Zoned School Measure (15 points possible) Point Attribution Table			
Difference in Index Score	Points	Difference in Index Score	Points
≥25.0	15	<9.9 and ≥7.8	7
<25.0 and ≥22.8	14	<7.8 and ≥5.7	6
<22.8 and ≥20.6	13	<5.7 and ≥3.5	5
<20.6 and ≥18.5	12	<3.5 and ≥1.4	4
<18.5 and ≥16.4	11	<1.4 and ≥-0.7	3
<16.4 and ≥14.2	10	<-0.7 and ≥-2.8	2
<14.2 and ≥12.1	9	<-2.8 and ≥-5.0	1
<12.1 and ≥9.9	8	<-5.0	0

Indicator: Geographical Comparison

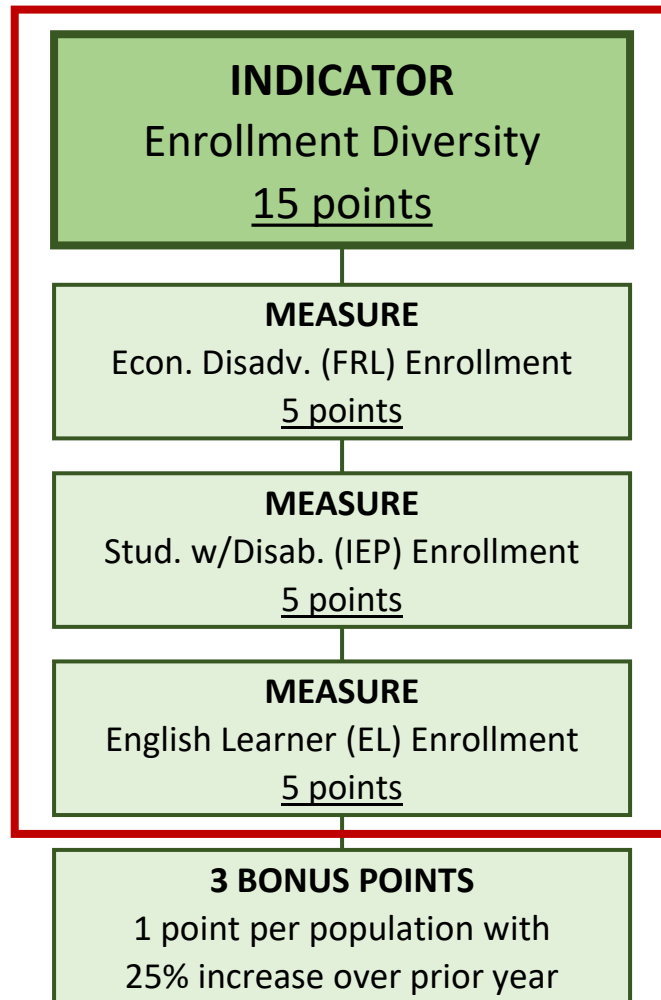


Example of how a Zoned School is determined¹:



¹See the [Clark](#) and [Washoe](#) County School District school zone search tools.

Indicator: Enrollment Diversity



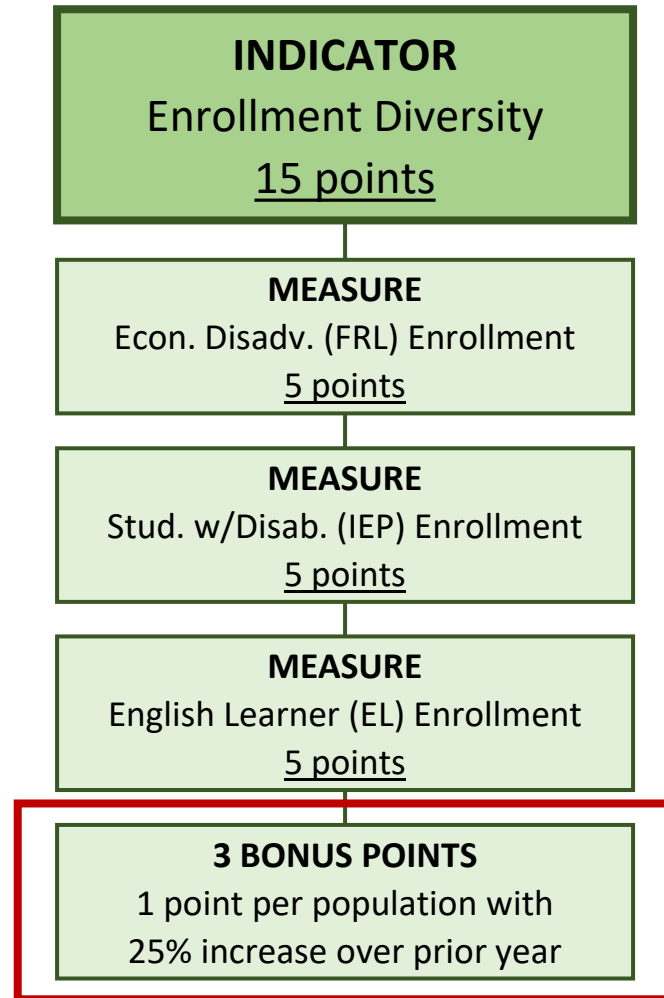
The **Enrollment Diversity** indicator has three measures that compare charter school enrollment rates to district enrollment rates for their school level (elem., middle, high) for the following student groups, as of Oct 1 validation day:

- Economically Disadvantaged (FRL) students
- Students with Disabilities (IEP)
- English Learners (ELs)

Point table:

Enrollment Diversity Indicator FRL, IEP, and EL Enrollment Rate Measures (5 points possible each) Point Attribution Tables					
FRL Enrollment Measure		IEP Enrollment Measure		EL Enrollment Measure	
FRL Enrollment Rate Difference Charter vs. District	Points	IEP Enrollment Rate Difference Charter vs. District	Points	EL Enrollment Rate Difference Charter vs. District	Points
≥0	5	≥0	5	≥0	5
<0 and ≥-10	4	<0 and ≥-2.5	4	<0 and ≥-5	4
<-10 and ≥-23	3	<-2.5 and ≥-5	3	<-5 and ≥-10	3
<-23 and ≥-37	2	<-5 and ≥-7.5	2	<-10 and ≥-15	2
<-37 and ≥-50	1	<-7.5 and ≥-10	1	<-15 and ≥-20	1
<-50	0	<-10	0	<-20	0

Indicator: Enrollment Diversity

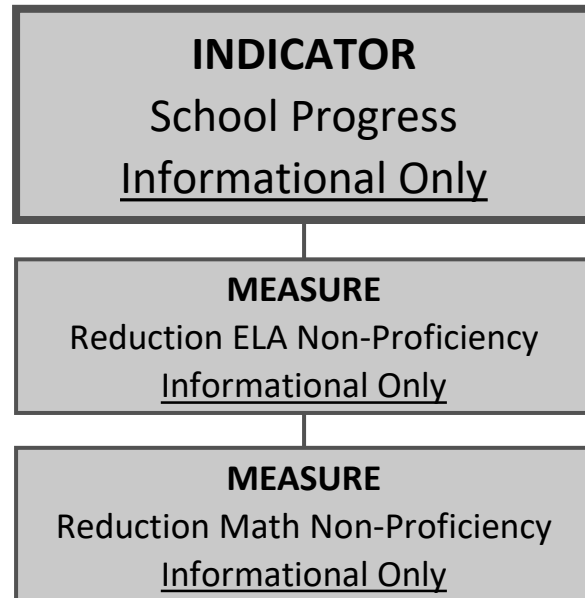


A school earns 1 bonus point, **up to 3 bonus points** total, in this indicator for each population with a 25% or more increase in enrollment rate over the prior year's rate.

For example, if a school's EL enrollment rate was 15% last year, they need an EL enrollment rate this year of $15 + (15 * 0.25) = 18.75\%$ to receive 1 bonus point for EL.

Bonus points are added to the indicator total, up to the maximum indicator total (15); for example, if a school receives maximum indicator points and also meets one or more bonus point criteria, that school will only receive the maximum indicator points possible (15).

Indicator: School Progress (Informational Only)



The **School Progress** indicator has two measures:

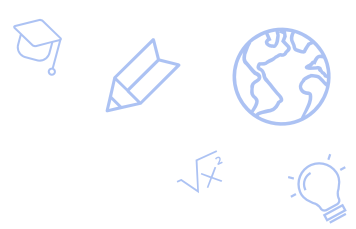
- Reduction in Math Non-Proficiency
- Reduction in ELA Non-Proficiency

These measures are currently informational only—points are not attached to performance.

As an example, if a non-proficiency rate is 60% the prior year and 55% the current year....

$$\frac{\text{Prior nonpro rate} - \text{Current nonpro rate}}{\text{Prior nonpro rate}} \times 100 \longrightarrow \frac{60 - 55}{60} \times 100$$

= 8.3% change in positive direction (a reduction).



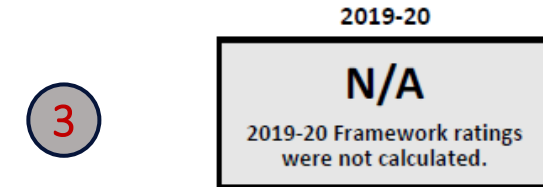
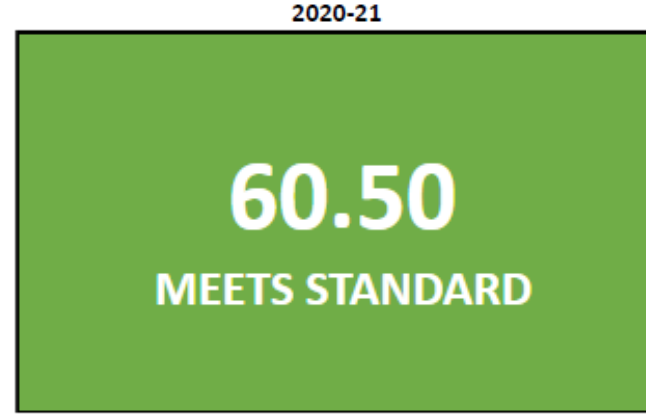
Agenda

- 1) Purpose/History of Academic Framework
- 2) Academic Framework Overview
- 3) Academic Framework Indicators and Measures
- 4) Academic Framework Reports**
- 5) Resources

In the Academic Performance Framework, schools earn points for performance, which are totaled to a final score and performance level. See the [Framework Technical Guide](#) for details.

The Meadows Charter ES **2**

Address: 10 The Meadows Dr, Las Vegas, NV, 89015
Website: <http://www.themeadowsharterschool.net/>
Oct. 1 2020 Enrollment: 503
2020-21 Grades Served: K-5
2020-21 NSPF Rating: 4 stars
Comparison District: Clark
2019-20 Comparison School: The Springs ES

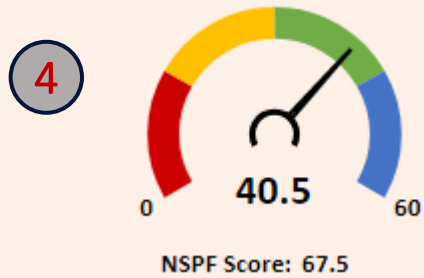


3

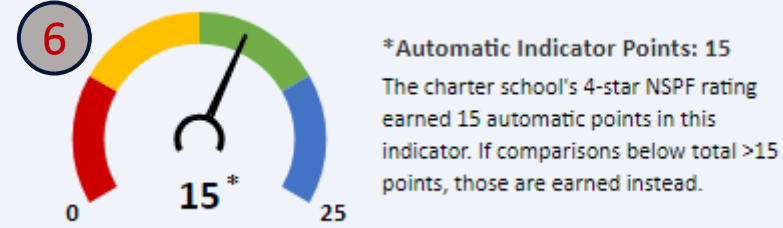
SCORING TABLE

<20 BELOW STANDARD	≥20 and <50 DOES NOT MEET STANDARD	≥50 and <80 MEETS STANDARD	≥80 EXCEEDS STANDARD
--------------------------	--	----------------------------------	----------------------------

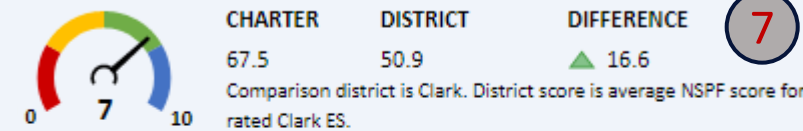
NEVADA SCHOOL RATINGS INDICATOR (60 POINTS)
 60% of charter school score in Nevada school ratings (NSPF).



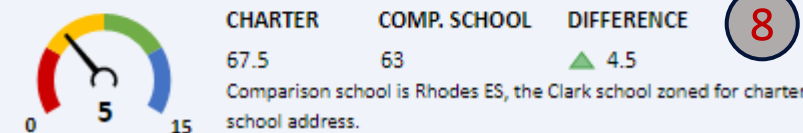
GEOGRAPHICAL COMPARISONS INDICATOR (25 POINTS)
 Charter school NSPF performance vs. comparison district/school(s).



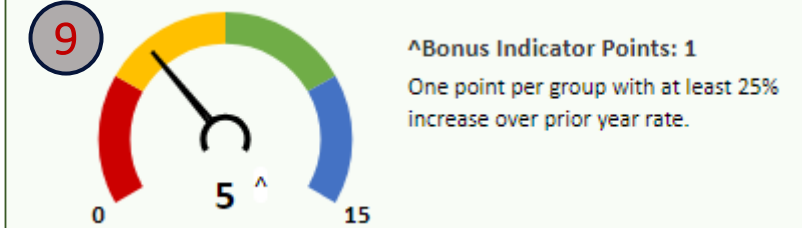
NSPF SCORE VS. COMPARISON DISTRICT (10 POINTS)



NSPF SCORE VS. COMPARISON SCHOOL (15 POINTS)



ENROLLMENT DIVERSITY INDICATOR (15 POINTS)
 Charter school FRL, IEP, and EL enrollment rates vs. comparison district.

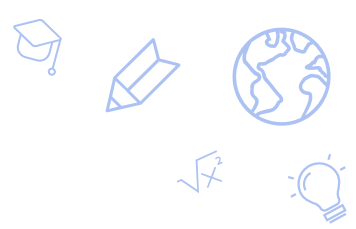


10/1/20 CHARTER VS DISTRICT K-5 ENROLLMENT RATES (5 POINTS EACH)

GRP.	CHARTER	DISTRICT	DIFF.	BONUS
FRL	≥10 and <20	77.9	▼	✓
IEP	≥15 and <20	13.4	▲	✗
EL	<5	21.6	▼	✗

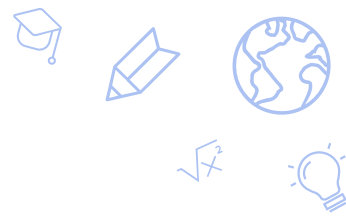
SCHOOL PROGRESS INDICATOR (NO POINTS)
 Charter school changes in Math/ELA non-proficiency.

Non-Proficiency Rates (%)		
2019-20	2020-21	
36.1	41.9	✗ Math Non-Proficiency Increased
30.7	31.1	✗ ELA Non-Proficiency Increased



Agenda

- 1) Purpose/History of Academic Framework
- 2) Academic Framework Overview
- 3) Academic Framework Indicators and Measures
- 4) Academic Framework Reports
- 5) **Resources**



Where to Find More Information

- The SPCSA Academic Performance Framework [Technical Guide](#) outlines the Framework in detail, including the business rules for all calculations performed.
- The [Academic Performance Framework Reports](#) section of the SPCSA website contains reports for SPCSA schools for the 2019-20 school year.
- The SPCSA website also provides a [general overview of its Performance Frameworks](#).



Outcomes

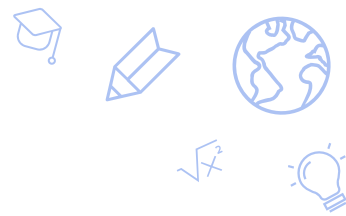
- One should now:
 - Have an enhanced knowledge of SPCSA Academic Performance Framework, including:
 - Its purpose.
 - The performance it measures.
 - Know how to interpret an Academic Framework report.
 - Know where to find additional information on the Academic Framework, if needed.



Thank you!

charterschools.nv.gov





Contact Info

- SPCSA Assessment/Accountability staff
 - Selcuk Ozdemir: selcuk@spcsa.nv.gov
 - Brandon Gaytán: brandongaytan@spcsa.nv.gov
 - Pat Malloy: pat.malloy@spcsa.nv.gov

Appendix A: NSPF Index Score Indicator



The NSPF includes the following indicators and measures¹. NSPF point totals below do not directly correspond to point totals in the SPCSA Academic Framework, as the indicator is 60% of the NSPF score.

Elementary

INDICATOR/MEASURES	POINTS
Academic Achievement Indicator	25
Pooled Proficiency Measure	20
Read-by-Grade-3 Measure	5
Growth Indicator	35
Math Median Growth Percentile (MGP) Measure	10
ELA MGP Measure	10
Math Adequate Growth Percentile (AGP) Measure	7.5
ELA AGP Measure	7.5
English Language Proficiency Indicator	10
WIDA AGP Measure	10
Closing Opportunity Gaps Indicator	20
Math Closing Opportunity Gaps Measure	10
ELA Closing Opportunity Gaps Measure	10
Student Engagement Indicator	10
Chronic Absenteeism Measure	10

Middle

INDICATOR/MEASURES	POINTS
Academic Achievement Indicator	25
Pooled Proficiency Measure	25
Growth Indicator	30
Math Median Growth Percentile (MGP) Measure	10
ELA MGP Measure	10
Math Adequate Growth Percentile (AGP) Measure	5
ELA AGP Measure	5
English Language Proficiency Indicator	10
WIDA AGP Measure	10
Closing Opportunity Gaps Indicator	20
Math Closing Opportunity Gaps Measure	10
ELA Closing Opportunity Gaps Measure	10
Student Engagement Indicator	15
Chronic Absenteeism Measure	10
Academic Learning Plans Measure	2
8 th Grade Credit Requirements (NAC 389) Measure	3

High

INDICATOR/MEASURES	POINTS
Academic Achievement Indicator	25
Math Proficiency Measure	10
ELA Proficiency Measure	10
Science Proficiency Measure	5
Graduation Rates Indicator	30
4-year ACGR Measure	25
5-year ACGR Measure	5
English Language Proficiency Indicator	10
WIDA AGP Measure	10
College and Career Readiness Indicator	25
Post-Secondary Preparation Participation Measure	10
Post-Secondary Preparation Completion Measure	10
Advanced/CCR Diploma Measure	5
Student Engagement Indicator	10
Chronic Absenteeism Measure	5
9 th Grade Credit Sufficiency Measure	5

¹For more information on the NSPF, see the NDE [Technical](#) and [Procedures](#) Manuals.