



# **Nevada State Public Charter School Authority**

## **2020 Academic and Demographic Needs Assessment**

*December 13, 2019*

# Contents of the Academic and Demographic Needs Assessment

- I. [Executive Summary](#)
- II. [Introduction of Academic and Demographic Needs Assessment](#)
- III. [Definition of Academic and Demographic Need](#)
- IV. [Findings of Academic and Demographic Needs Assessment](#)
- V. [Implications for SPCSA Authorizing Practices](#)
- VI. [Conclusion](#)
- VII. [Glossary of Terms](#)
- VIII. [Appendices](#)

**I. Executive Summary**

In 2019, the Nevada State Legislature voted to pass Assembly Bill 462. This legislation requires that the State Public Charter School Authority (SPCSA) conduct and incorporate the findings of “an evaluation of demographic information of pupils, the academic needs of pupils and the needs of any pupils who are at risk of dropping out of school in this State” into its charter school authorizing decisions. The deadline for the first evaluation was established as July 30, 2019, with a requirement that the evaluation be updated annually by January 31. To this end, the SPCSA conducted an Academic and Demographic Needs Assessment in collaboration with the Nevada Department of Education (NDE) as well as local school districts and the Authority board approved the first Academic and Demographic Needs Assessment on July 26, 2019. During the fall of 2019, the Nevada Department of Education released updated school performance and demographic data. This iteration of the Academic and Demographic Needs Assessment incorporates the most recent data from the Nevada Department of Education. The purpose of this document is to detail how the SPCSA has defined academic and demographic need, the findings of the Needs Assessment, and the implications of those findings.

The SPCSA worked in conjunction with local school districts and the Nevada Department of Education to establish definitions for demographic and academic needs that are transparent, grounded in student and school performance, and aligned to the Department’s accountability system. These needs reflect the current state of education in Nevada and will evolve over time in response to changes in our state’s educational context.

The SPCSA has defined demographic and academic needs as follows:

1. Demographic Needs

- A. Student groups that underperform according to graduation rate, the ACT Assessment, and the Smarter Balanced Assessment (both Math and ELA) for the last three years present a demographic need; these student groups may benefit from the creation of high-quality school options focused on meeting their needs;

2. Academic Needs

- A. Geographies with 1 and 2 star schools: In zip codes with a 1- or 2-Star school, students are enrolling in schools that are, based on definitions from the Nevada Department of Education’s Nevada School Performance Framework (NSPF), inadequate and the addition of a 3, 4 or 5-Star school would provide an alternative for these students;
- B. Students at risk of dropping out: Despite a rapidly improving graduation rate, nearly one in five students does not graduate high school in four years, with certain student groups persistently graduating at lower rates than their peers;

Section 6.3 of AB 462 requires that approval of any charter application must include a determination that the proposed school meets one or more of the needs defined in the Academic and Demographic Needs Assessment. The SPCSA will evaluate charter applications based upon both the public charter school application rubric and the proposed school’s plans to meet statewide academic and demographic needs found by the SPCSA’s Needs Assessment, as shown below.

<p>Applicant <b>does not meet either an academic need or a demographic need.</b></p> <p>Applicant may need to revise their academic plan or pick a new location in order to qualify for a recommendation - even if their application otherwise meets the standards set forth by the SPCSA in its application rubric.</p>	<p>Applicant meets one or more academic needs <b>OR</b> one or more demographic needs.</p> <p>Applicant <b>may be recommended for approval</b> contingent upon the details of their application and may be subject to additional contract conditions, so long as their application otherwise meets the standard set forth by the SPCSA in its application rubric.</p>	<p>Applicant meets one or more academic needs <b>AND</b> one or more demographic needs.</p> <p>Applicant <b>will be recommended for approval</b> so long as their application otherwise meets the standards set forth by the SPCSA in its application rubric.</p>
--	---	---


**Likelihood applicant is approved**

The Needs Assessment will be updated each fall, in collaboration with the Nevada Department of Education and local school districts, to ensure that each charter application process is reflective of the state's current academic and demographic needs. Moving forward, the SPCSA will approve high quality applications that address the needs identified in the Needs Assessment. In reviewing and approving charter applications, the SPCSA will solicit input and feedback from local school districts, municipalities, other key stakeholders, and the public at large.

The SPCSA would like to thank the Nevada Department of Education, the staff of the Clark County School District, the staff of the Washoe School District, and the City of Henderson for their contributions to the first iteration of the Academic and Demographic Needs Assessment. Many additional stakeholders joined the SPCSA's working group on the Growth Management Plan and where applicable, their feedback has been incorporated into this version of the Academic and Demographic Needs Assessment. The SPCSA looks forward to continued engagement with school districts, their boards of trustees, municipalities, and community leaders as we implement this new component of our school authorization process. Further information on engagement with stakeholders can be found in Appendix C.

## II. Introduction of Academic and Demographic Needs Assessment

### *Legislative context and purpose*

In May of 2019, the Nevada State Legislature voted to pass Assembly Bill 462 which was then signed into law with an effective date of June 3, 2019. The legislation requires that public charter school sponsors make several changes to their authorizing and accountability practices. These changes included the requirement that the SPCSA conduct an annual assessment of statewide academic and demographic needs which, moving forward, will inform SPCSA's charter authorization planning and decisions.

AB 462 states that "the State Public Charter School Authority shall prepare, in collaboration with the Nevada Department of Education and, to the extent practicable, the board of trustees of each school district in this State and any other sponsor of a public charter school in this State, an evaluation of demographic information of pupils, the academic needs of pupils, and the needs of any pupils who are at risk of dropping out of school in this state." The law states that the SPCSA's initial assessment must be conducted by July 30, 2019. Thereafter, the SPCSA shall conduct this assessment annually and prior to January 31 of each year.

For each charter application, the SPCSA conducts an application review process according to which it makes recommendations to the board. Subsequently, the board reviews each application, its accompanying staff recommendation, and votes to approve or deny the proposal. In the past, this review process has required that an application both complied with applicable laws and regulations and that the applicant "demonstrated competence in accordance with the criteria for approval prescribed by the sponsor."<sup>1</sup> Moving forward, in accordance with AB 462, the staff shall additionally "consider the degree to which the proposed public charter school will address the needs identified" and shall "solicit input from the board of trustees of the school district in which the proposed public charter school will be located" in determining their application recommendations to the board. Similarly, the board shall approve applications that, in addition to previous requirements noted, meet at least one need identified in the Academic and Demographic Needs Assessment and has received sufficient public input.

This document will address the following questions:

1. What are the standards and measures according to which the SPCSA we will assess which specific student groups may benefit from a public charter school option?
2. What are the standards and measures according to which the SPCSA we will assess whether a geography has a need for a public charter school option?
3. What are the standards and measures according to which the SPCSA we will assess the needs of students who are at risk of dropping out of school?
4. Based on the foregoing, which communities seem most likely to benefit from the strategic placement of a public charter school?
5. What are the implications of the foregoing for the SPCSA's authorizing practices?

The objective of this document is to assess statewide academic and demographic needs as outlined in AB 462. The specific measures outlined in this document are not, however, the only factors that the SPCSA will consider in authorizing new schools. AB 462 also calls for public input in both this Needs Assessment and in the charter school authorizing process. In both processes moving forward, the SPCSA will consider many factors raised by the community, including evidence of demand for new schools, whether due to the need for additional facility capacity, students on public charter school waiting lists, or families desiring different educational options.

Furthermore, as the SPCSA develops new versions of the Academic and Demographic Needs Assessment in future years, the SPCSA will consider changes in Nevada's educational landscape and will propose changes to the way that needs are defined and measured as appropriate. In future years, the SPCSA will continue the practice of providing local school districts, municipalities, and other members of the public with the opportunity to provide input into and feedback on the proposed definitions of need and methodology of the assessment.

---

<sup>1</sup> NRS 388A.249

### III. Definition of Academic and Demographic Need

AB 462 requires that the Academic and Demographic Needs Assessment evaluate the “demographic information of pupils, the academic needs of pupils, and the needs of any pupils who are at risk of dropping out of school in this state.”

While the definitions of needs are specific, charter applicants will have the flexibility to determine how they would address one or more of the needs, if approved. These definitions will evolve over time to correspond to changes in Nevada’s academic and demographic needs.

#### Identified Needs

AB 462 requires that the Academic and Demographic Needs Assessment evaluate the “demographic information of pupils, the academic needs of pupils, and the needs of any pupils who are at risk of dropping out of school in this state.” Accordingly, the SPCSA has defined a set of needs that are:

- Supported by rationale (data);
- Accompanied by information (maps and/or data) that will be useful for applicants seeking to open public charter schools and for SPCSA staff and Authority Board reviewing applications for alignment to need;
- Reflective of the current context of the State Public Charter School Authority (demographic makeup, locations, density and performance of schools); and
- Responsive to the statewide, district and localized educational context.

#### 1. Demographics

Applicants meeting this need will propose a school model that includes demonstrated capacity, credible plans, and thorough research and analysis in order to intentionally serve the following student groups, each of which has been identified as persistently underperforming based on data provided by the Nevada Department of Education: Students qualifying for free or reduced-price lunch, English Learners, and students with IEPs. Successful applicants will demonstrate the capacity to support these student groups in achieving academic performance at or above the state average.

*Rationale: These student groups have performed below the state average in graduation rate, ACT Assessment, Smarter Balanced Assessment (both math and reading) for the last three years based on statewide data from the Nevada Report Card. Historically, most school districts have used free and reduced-price lunch rates as a proxy measure for students in poverty.*

#### 2a. Academic Need: Geographies with 1 and 2 Star Schools (see Appendix B for definitions of Star ratings)

Applicants meeting this need will propose a school model that includes demonstrated capacity, credible plans, and thorough research and analysis in order to intentionally provide access to 3, 4 and 5-Star schools in zip codes where students are attending a 1- or 2-Star school. A map and list of zip codes will be provided; SPCSA charter schools will be removed from the data set used to identify zip codes.

*Rationale: The Nevada School Performance Framework was developed by the Nevada Department of Education with input from local school districts across the state. The Nevada School Performance Framework identifies 3-Star performance as adequate, while 1-Star schools are defined as not meeting standards and 2-Star schools are defined as partially meeting standards. In zip codes with a 1- or 2-Star school, students are enrolling in schools that are, by definition, inadequate and the addition of a 3, 4 or 5-Star school would provide an alternative for these students. The use of the star rating as a measure of success has been reaffirmed by the state’s largest school district which has established a 5-year goal of achieving a rating of 3-Stars or better for all schools in the district.*

#### 2b. Academic Need: Students at Risk of Dropping out of School

Applicants meeting this need will propose a public charter school model that includes demonstrated capacity, credible plans, and thorough research and analysis in order to prevent at-risk students from dropping out of school. Models may include but are not limited to programs designed for student groups that are most at-risk of dropping out or programs aimed at enabling credit-deficient students to get back on track to graduate. Applicants should demonstrate a strong

understanding of grade-level appropriate indicators for successful high school completion, such as early literacy, attendance, and credit sufficiency and plans to enable students to successfully meet these milestones.

*Rationale: Despite a rapidly improving graduation rate, nearly one in five students does not graduate high school in four years , with certain student groups persistently graduating at lower rates than their peers. In addition, research has shown that there are early indicators for students at risk of dropping out of school that can be proactively addressed. According to research compiled by [Attendance Works](#), chronic absenteeism is a critical factor in student academic success and in certain circumstances is associated with increased risk of dropping out of school. In addition, research by the [Annie E. Casey Foundation](#) found that students “who do not read proficiently by third grade are four times more likely to leave school without a diploma than proficient readers.”*

Section 6.3 of AB 462 requires that approval of any charter application must include a determination that the proposed school meets one or more of the needs identified in the Academic and Demographic Needs Assessment. The SPCSA has adjusted the charter application process such that both the SPCSA staff’s review of charter applications and the Authority’s board’s decisions on public charter school applications are both reflective of district input as well as the findings of the Needs Assessment. The SPCSA will conduct the Academic and Demographic Needs Assessment on an annual basis in order to ensure that each charter application process is reflective of the state’s current academic and demographic needs.

#### IV. Findings of Academic and Demographic Needs Assessment

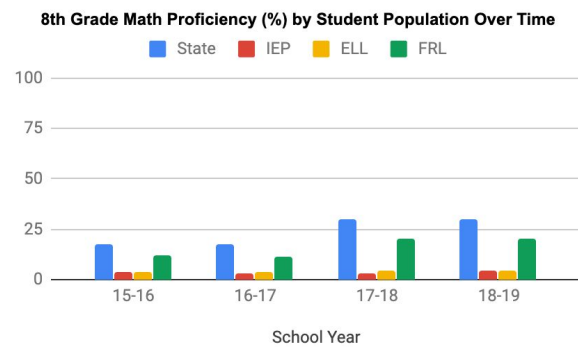
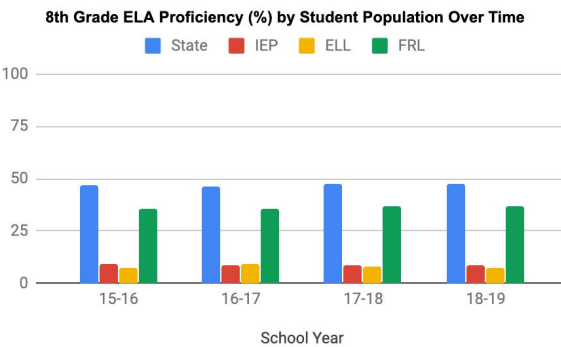
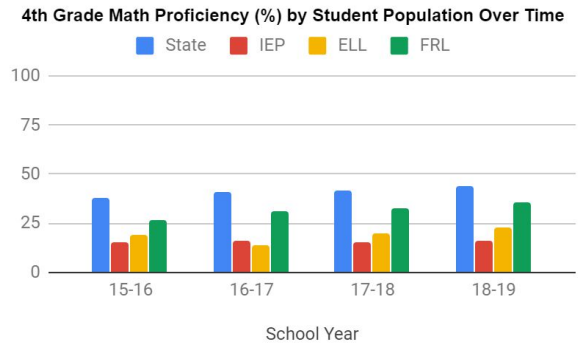
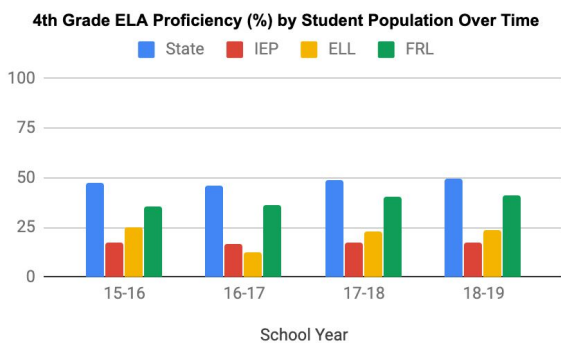
The SPCSA has collaborated with the Nevada Department of Education and local school districts statewide to conduct this Academic and Demographic Needs Assessment, will review charter applications in consideration of the Needs Assessment findings, and will approve high quality applications that address the needs identified in the Needs Assessment. In reviewing and approving charter applications, the SPCSA will solicit input and feedback from local school districts, municipalities, other key stakeholders, and the public at large.

The information below provides a summary of current trends identified through this Needs Assessment. The SPCSA will update the Needs Assessment annually. It is anticipated that as the educational landscape evolves, so too will the content and findings within the Needs Assessment.

##### 1. Demographics

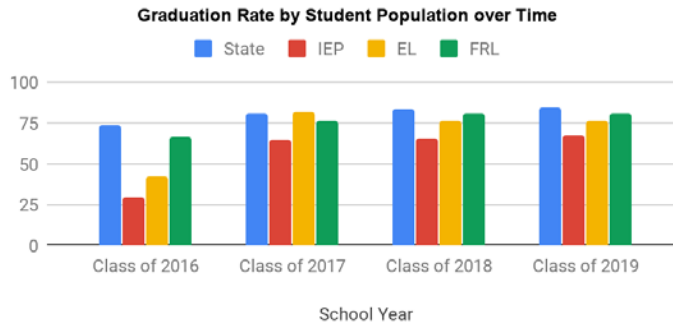
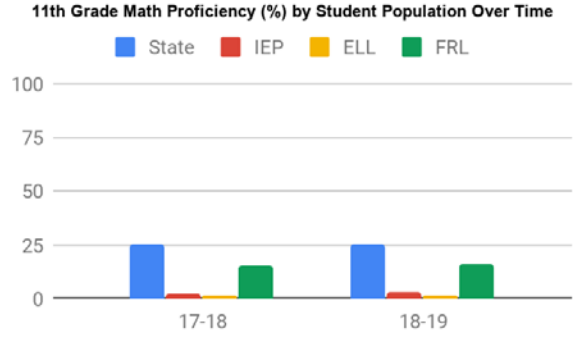
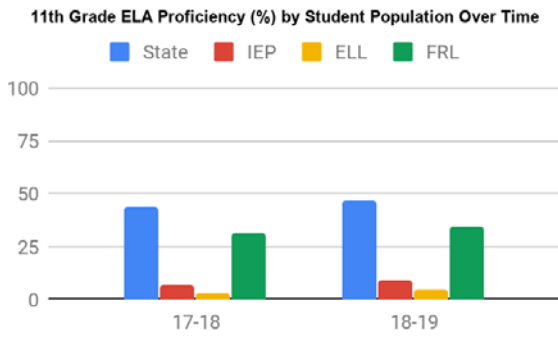
The following student groups have historically underperformed relative to the average Nevada students across multiple academic measures<sup>2</sup>:

- Students qualifying for free or reduced-price lunch students underperformed relative to the average Nevada student in 2015-2016, 2016-17, 2017-18, and 2018-19 according to graduation rate, ACT Assessment, and the Smarter Balanced Assessment (in both Math and ELA).
- English Learners underperformed relative to the average Nevada student in 2015-2016, 2016-17, 2017-18, and 2018-19 according to graduation rate, ACT Assessment, and the Smarter Balanced Assessment (in both Math and ELA).
- Students who have Individualized Education Programs (IEPs) underperformed relative to the average Nevada student in 2015-2016, 2016-17, 2017-18, and 2018-19 according to graduation rate, ACT Assessment, and the Smarter Balanced Assessment (in both Math and ELA).

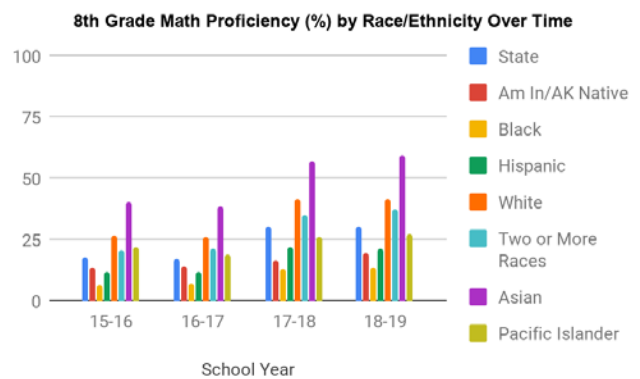
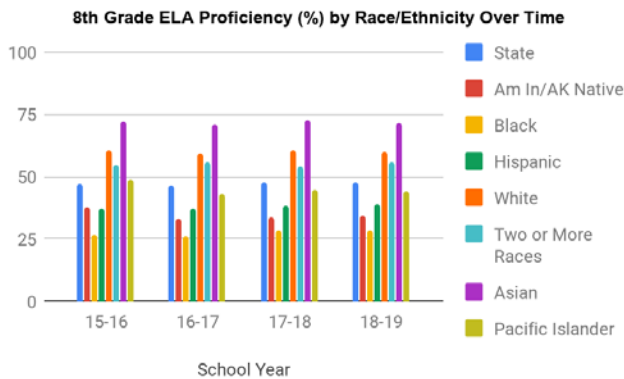
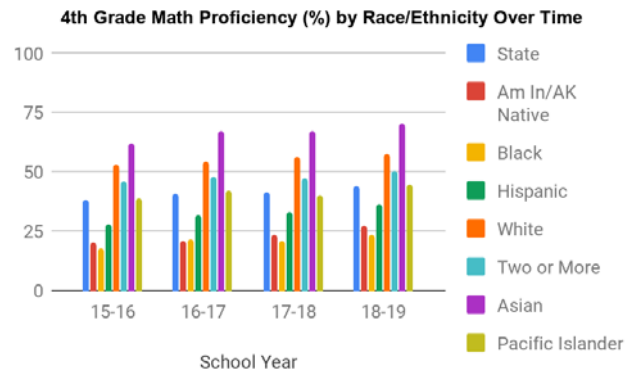
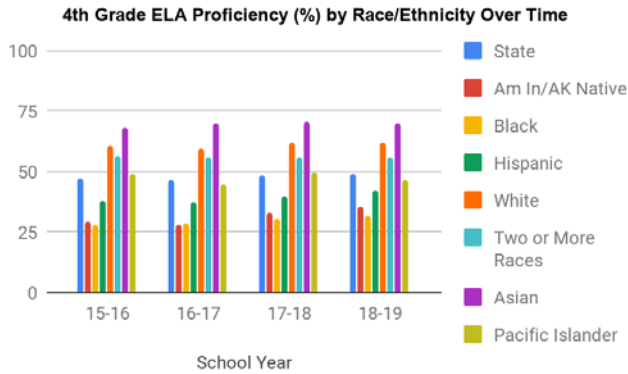


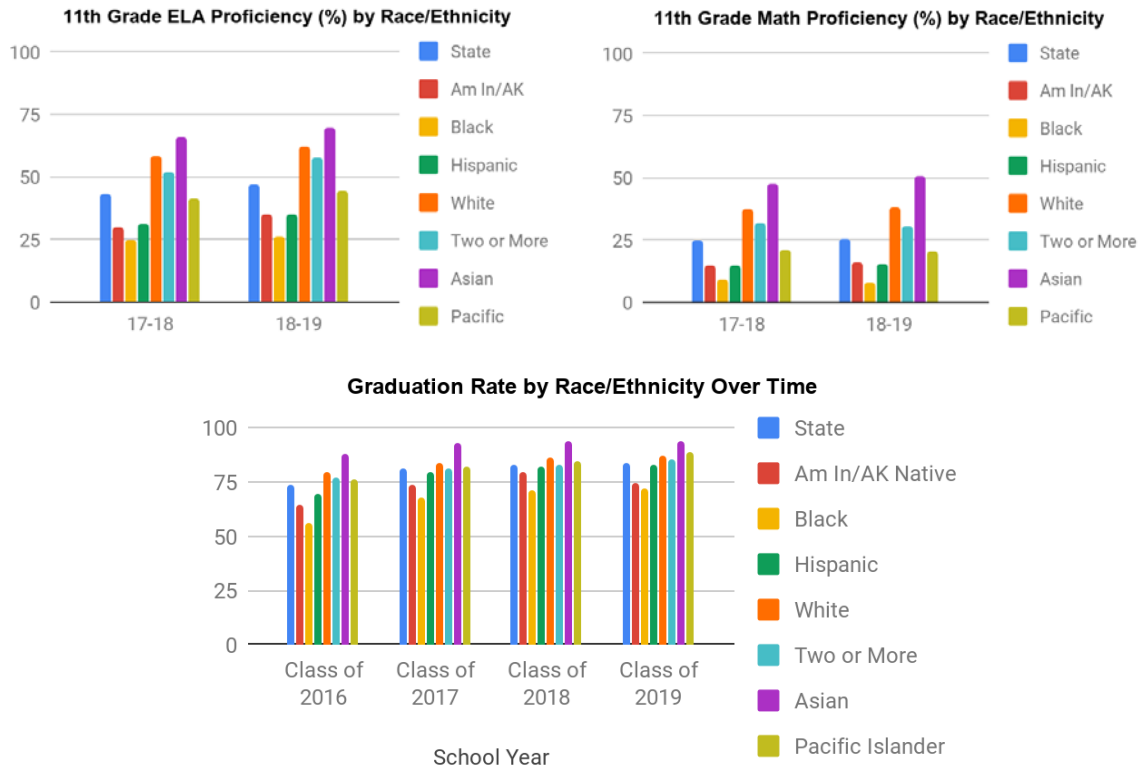
<sup>2</sup> Note that Graduation Rate data will be released on December 12th for the 2018-19 school year; the SPCSA will update these graphs to reflect those data at that time.





In addition, while the focus of this analysis was on the three aforementioned student groups, our analysis of data from the Nevada Department of Education showed that Black, Hispanic, and American Indian/Alaskan Native students underperformed relative to the average Nevada student in the 2015-2016, 2016-17, 2017-18, and 2018-19 school years according to graduation rate, ACT Assessment, and the Smarter Balanced Assessment (in both Math and ELA).





**2a. Academic Need: Geographies with 1 and 2 Star Schools**

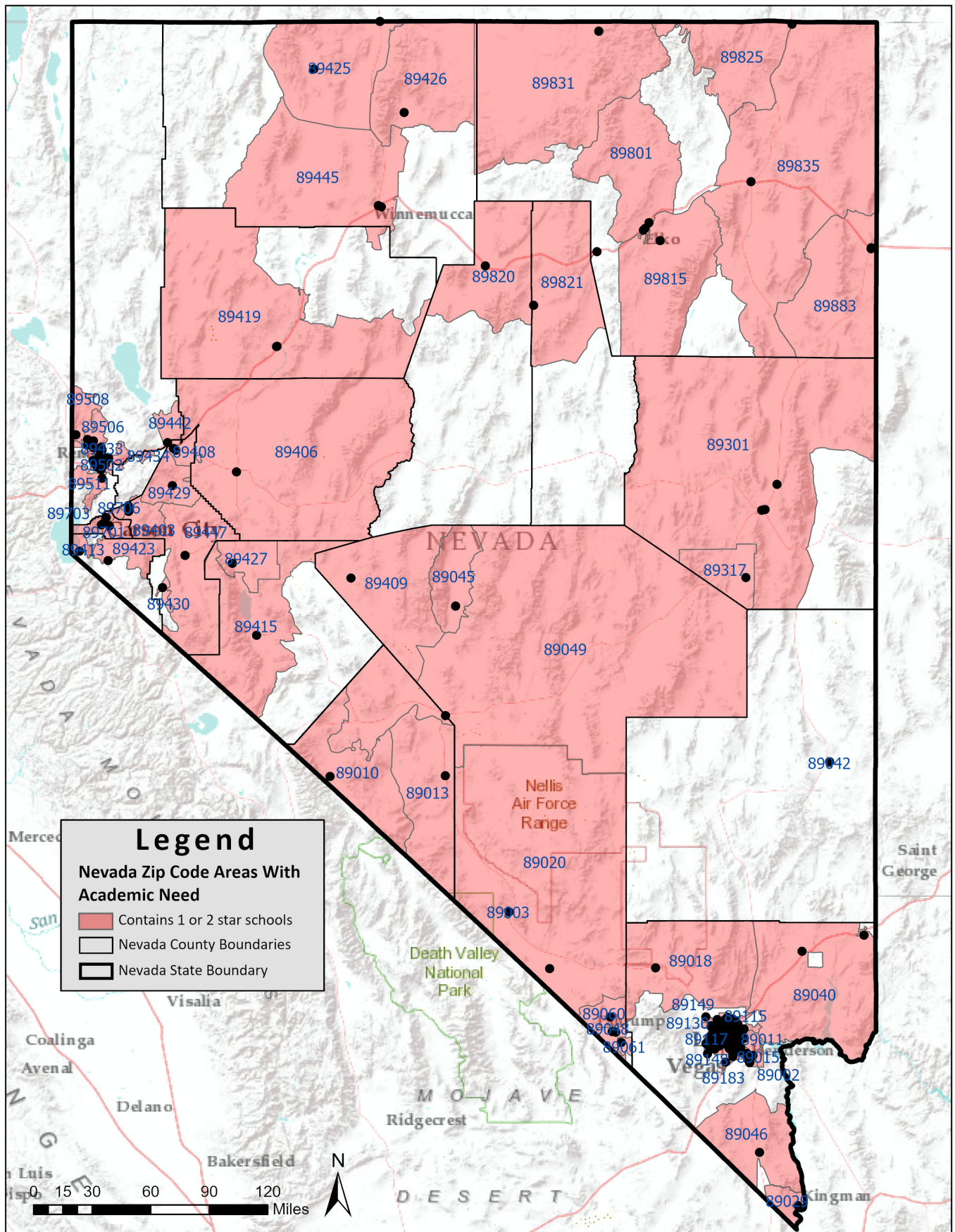
The following analysis provides an overview of academic need, as measured by the existence of 1 and 2 star schools, in Nevada as a whole and in each local school district. These data do not include public charter schools authorized by the SPCSA. Please note that a detailed summary of each local school district can be found in Appendix A. These analyses reflect the most recent data available: the 2017-18 Nevada School Performance Framework data and 2018-19 enrollment data, both from the Nevada Department of Education.

- Statewide (does not include SPCSA-sponsored charter schools)
  - In the state of Nevada, 17 local school districts serve approximately 434,000 students in grades K-12 across 140 zip codes;
  - Of these 140 zip codes, 94 or 67% contain one or more schools rated 2-star or below; and
  - In all, approximately 150,000 students are enrolled in 1 or 2-star schools, representing 34.6% of students enrolled in local district schools.
- Carson City
  - The Carson City School District serves approximately 7,933 students in 11 schools across 3 zip codes; and
  - In the district, there are 4 schools rated 1 or 2 stars and they serve 2,354 students, or 29.6% of students in the district.
- Churchill
  - The Churchill County School District serves approximately 3,220 students in 5 schools across 1 zip code; and
  - In the district, there is 1 school rated 1 or 2 stars and it serves 783 students, or 24.3% of students in the district.
- Clark
  - The Clark County School District serves approximately 318,760 students in 394 schools across 65 zip codes; and

- In the district, there are 161 schools rated 1 or 2 stars and they serve 114,495 students, or 35.9% of students in the district.
- **Douglas**
  - The Douglas County School District serves approximately 5,639 students in 18 schools across 5 zip codes; and
  - In the district, there are 2 schools rated 1 or 2 stars and they serve 133 students, or 2.3% of students in the district.
- **Elko**
  - The Elko County School District serves approximately 9,986 students in 37 schools across 9 zip codes; and
  - In the district, there are 11 schools rated 1 or 2 stars and they serve 2,869 students, or 28.7% of students in the district.
- **Esmeralda**
  - The Esmeralda County School District serves approximately 73 students in 6 schools across 3 zip codes; and
  - In the district, there are 2 schools rated 1 or 2 stars and they serve 34 students, or 46.5% of students in the district.
- **Eureka**
  - The Eureka County School District serves approximately 323 students in 4 schools across 2 zip codes; and
  - In the district, there is 1 school rated 1 or 2 stars and it serves 37 students, or 11.4% of students in the district.
- **Humboldt**
  - The Humboldt County School District serves approximately 3,349 students in 21 schools across 5 zip codes; and
  - In the district, there are 6 schools rated 1 or 2 stars and they serve 1,135 students, or 33.8% of students in the district.
- **Lander**
  - The Lander County School District serves approximately 984 students in 6 schools across 2 zip codes; and
  - In the district, there is 1 school rated 1 or 2 stars and it serves 486 students, or 49.3% of students in the district.
- **Lincoln**
  - The Lincoln County School District serves approximately 849 students in 10 schools across 4 zip codes; and
  - In the district, there is 1 school rated 1 or 2 stars and it serves 72 students, or 8.4% of students in the district.
- **Lyon**
  - The Lyon County School District serves approximately 8,767 students in 22 schools across 5 zip codes; and
  - In the district, there are 9 schools rated 1 or 2 stars and they serve 3,160 students, or 36% of students in the district.
- **Mineral**
  - The Mineral County School District serves approximately 532 students in 4 schools across 2 zip codes; and
  - In the district, there are 2 schools rated 1 or 2 stars and they serve 136 students, or 25.5% of students in the district.
- **Nye**
  - The Nye County School District serves approximately 5,356 students in 27 schools across 9 zip codes; and

- In the district, there are 12 schools rated 1 or 2 stars and they serve 2,754 students, or 51.4% of students in the district.
- Pershing
  - The Pershing County School District serves approximately 658 students in 4 schools across 1 zip code; and
  - In the district, there are 2 schools rated 1 or 2 stars and they serve 464 students, or 70.5% of students in the district.
- Storey
  - The Storey County School District serves approximately 440 students in 4 schools across 2 zip codes; and
  - In the district, there are 0 schools rated 1 or 2 stars.
- Washoe
  - The Washoe County School District serves approximately 66,318 students in 120 schools across 19 zip codes; and
  - In the district, there are 39 schools rated 1 or 2 stars and they serve 18,363 students, or 27.6% of students in the district.
- White Pine
  - The White Pine County School District serves approximately 1,224 students in 9 schools across 4 zip codes; and
  - In the district, there are 7 schools rated 1 or 2 stars and they serve 838 students, or 68.4% of students in the district.

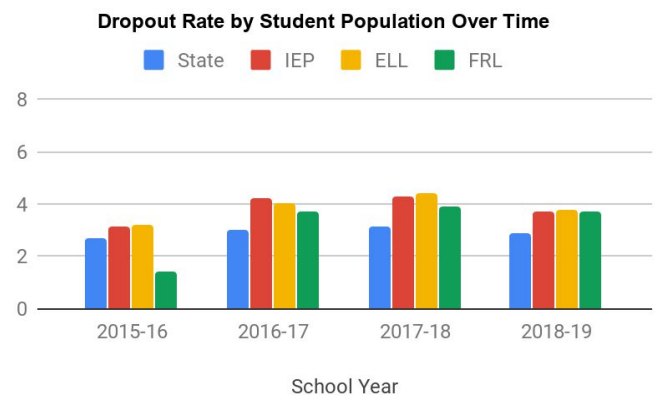
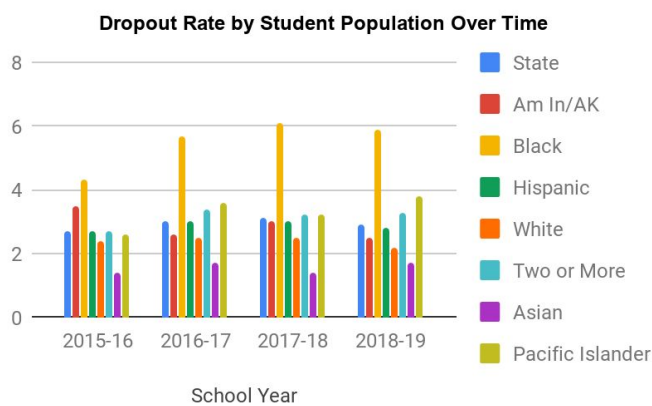
The subsequent page contains a statewide map indicated the zip codes that contain 1- and 2-star schools. See Appendix A for a map of each local school district.



**2b. Academic Need: Students at Risk of Dropping out of School**

Based on data from the Nevada Department of Education, students with disabilities, English learners, students qualifying for free or reduced-price lunch and students belonging to certain racial and ethnic groups have higher dropout rates than their peers.

- Over the last four years, English Language Learners, students qualifying for Free or Reduced-Price lunch and Students with disabilities, have dropped out of school at a higher rate than the average of Nevada student.<sup>3</sup>
- For the past four years, Black students have had the highest dropout rate of any racial or ethnic subgroup.
- Students identifying as Two or More Races and Pacific Islander have had a higher dropout rate than the statewide average for each of the last three school years.
- While Native American Students had a higher dropout rate than the state average during the 2015-16 school year, the dropout rate among American Indian students has been below the state average for the last three years.
- Additionally, data on graduation rate and credit sufficiency reinforce these trends.



<sup>3</sup> The only exception to this statement was for FRL students during the 15-16 school year.



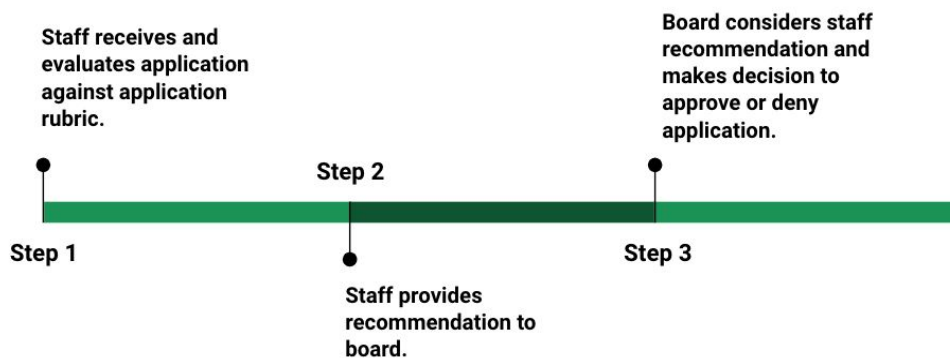
## V. Implications for SPCSA Authorizing Practices

The SPCSA’s charter application process has always required that charter applicant define the academic need the proposed school would serve as well as the school’s academic, operational, and financial plans. Based on the information provided, the SPCSA review team then evaluated applicants and recommend those that address each section with “specific and accurate information that shows thorough preparation, presents a clear, realistic picture of how the school expects to operate, and inspires confidence in the applicant’s capacity to carry out the plan effectively in a way which will result in a 4- or 5-start school.”<sup>4</sup> AB 462 does not contradict these historical practices, which are aligned to national best practices. It does however require that the SPCSA augment its authorizing process in important ways as described below.

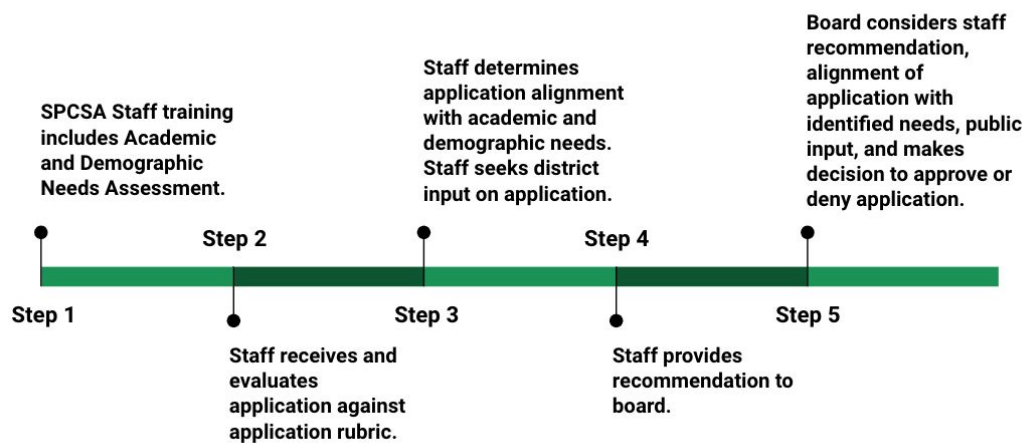
The SPCSA will continue to evaluate whether public charter school applications comply with all applicable laws and regulations as well as evaluate whether the proposal demonstrates competence that will “likely result in a successful opening and operation of the charter school.”<sup>5</sup> Moving forward, however, charter school sponsors are now required to approve only those public charter school applications that are found to address one or more of the needs identified in the sponsor’s most recent evaluation.

In response to the requirements outlined by AB 462, the SPCSA has adjusted the charter application process as shown below:

### Former Process



### Updated Process



<sup>4</sup> Per SPCSA Application Rubric

<sup>5</sup> NRS 388A.249

The SPCSA staff review of charter applications and the Authority board approval of charter applications will still consider the quality of applications. Moving forward, both stages will additionally consider (1) an application’s alignment with the findings of the Academic and Demographic Needs Assessment as well, (2) district input on an application’s alignment with the Needs Assessment , and (3) public input on demand for new schools.

Phase	Details	Who Leads?	Who can provide input?
Review of Charter Applications	Charter application review assesses both the quality of the application as well as the application’s responsiveness to the findings of the Needs Assessment.	SPCSA staff	Local school district where the proposed school would be located
Approval of Charter Applications	<p>The SPCSA board will approve schools that (1) meet the standards for quality set by the SPCSA and (2) align to one or more needs identified in the Academic and Demographic Needs Assessment.</p> <p>In considering applications for approval, the SPCSA will solicit public input. This will involve targeted outreach to key stakeholders, including but not limited to local school districts and municipalities. The public input process will explicitly address questions of demand for new schools including district facility capacity and public charter school waiting lists.</p>	SPCSA board	SPCSA staff, members of the public

In determining whether to approve a charter application, the SPCSA board will consider the findings of the Academic and Demographic Needs Assessment in making authorizing decisions as shown in the table below:

<p>Applicant <b>does not meet either an academic need or a demographic need.</b></p> <p>Applicant may need to revise their academic plan or pick a new location in order to qualify for a recommendation - even if their application otherwise meets the standards set forth by the SPCSA in its application rubric.</p>	<p>Applicant meets one or more academic needs <b>OR</b> one or more demographic needs.</p> <p>Applicant <b>may be recommended for approval</b> contingent upon the details of their application and may be subject to additional contract conditions, so long as their application otherwise meets the standard set forth by the SPCSA in its application rubric.</p>	<p>Applicant meets one or more academic needs <b>AND</b> one or more demographic needs.</p> <p>Applicant <b>will be recommended for approval</b> so long as their application otherwise meets the standards set forth by the SPCSA in its application rubric.</p>
--	---	---


**Likelihood applicant is approved**



## **VI. Conclusion**

The SPCSA approved the first iteration of the Academic and Demographic Needs Assessment on July 26, 2019. This iteration of the Needs Assessment includes the most recent school performance and demographic data released by the Nevada Department of Education in the fall of 2019. Going forward, the SPCSA anticipates updating the Needs Assessment each fall.

The Needs Assessment provides up-to-date information about the demographics and academic needs of students across the state of Nevada. In addition, the Needs Assessment serves as a key driver in the development of the Growth Management Plan which is also required by AB 462. While the Needs Assessment provides a snapshot in time of the needs of students in Nevada, the Growth Management Plan provides a preview of how new public charter schools will address the identified needs of students in Nevada.

Ultimately, AB 462 creates a platform for the strategic and informed growth of public charter schools. Taken together, the Needs Assessment and the Growth Management Plan will help the SPCSA to fulfill its responsibilities as an authorizer of public charter schools that are responsive to the needs of students and families throughout Nevada.

## VII. Glossary of Terms

Unless otherwise noted, all definitions are from the [Nevada Report Card Website](#).

**ACT Assessment:** The ACT is a nationally recognized college admissions exam that is accepted by all four-year colleges and universities in the United States.<sup>6</sup>

**Credit Deficiency:** Not having enough credits to progress to the next grade or graduate.

**Dropout:** Any pupil who withdrew during the previous school year for any reason specified in subsection 3 of NAC 387.215.

**English Language:** English Learners (EL) are students who have limited proficiency with the English language as measured by language assessment tools. Previously referred to as LEP.

**Free & Reduced Lunch:** Students who are from households that qualify by income to receive free or reduced-price lunch at their school.

**Graduation Rate:** The rate at which 9th graders graduate by the end of the 12th grade. (number of students who graduate in four years with a regular high school diploma divided by the number of students who form the adjusted cohort for the graduating class.)

**Individualized Education Program (IEP):** A written statement for each child with a disability that is receiving special education services; it is developed and reviewed by the IEP Team. (From IDEA)

**Smarter Balanced Assessment:** The Smarter Balanced assessments (SBAC) are a key part of measuring student progress in grades 3-8 towards success in college and career. The computer-adaptive format and online administration of the assessments provide meaningful feedback that teachers and parents can use to help students succeed. The assessments are aligned with the Nevada Academic Content Standards in ELA and mathematics. Results from SBAC are included on the Nevada Report Card.<sup>7</sup>

---

<sup>6</sup> [http://www.doe.nv.gov/Assessments/College\\_Career\\_Readiness\\_Assessments\\_ACT/](http://www.doe.nv.gov/Assessments/College_Career_Readiness_Assessments_ACT/)

<sup>7</sup> [http://www.doe.nv.gov/Assessments/Smarter\\_Balanced\\_Assessment\\_Consortium\\_\(SBAC\)/](http://www.doe.nv.gov/Assessments/Smarter_Balanced_Assessment_Consortium_(SBAC)/)

## **VIII. Appendices**

Appendix A - District Summaries

Appendix B - Definitions of Star Ratings

Appendix C - Stakeholder Input

# *Appendix A: District Summaries*

*District Summaries will be provided in a separate attachment due to the size of the document. The analyses reflected in this appendix reflect the most recent data available: the 2018-19 Nevada School Performance Framework data and 2019-20 enrollment data, both from the Nevada Department of Education.*

# District Snapshot

## Carson City School District

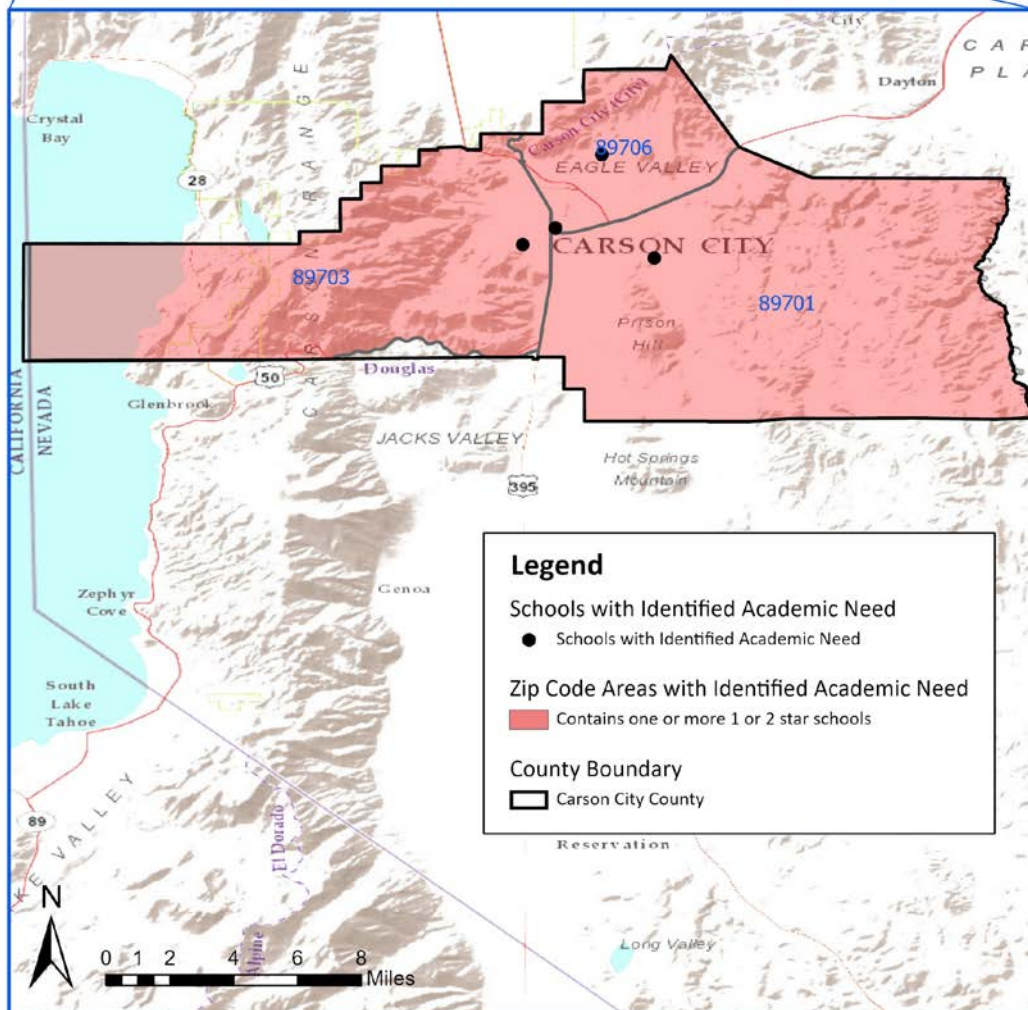
### Analysis of Zip Codes with 1- and 2-Star Schools

#### Summary

- The Carson City School District serves approximately 7,933 students in 11 schools across 3 zip codes; and
- In the district, there are 4 schools rated 1 or 2 stars and they serve 2,354 students, or 29.6% of students in the district.



#### Carson City County, Nevada Zip Code Areas with Identified Academic Need



Tables display zip codes and schools based on 2018-19 Nevada School Performance Framework (NSPF) star ratings. Enrollment is as of October 1, 2019.

^In general, elementary schools (ES) serve grades K-5, middle schools (MS) serve grades 6-8, and high schools (HS) serve grades 9-12.

\*Data are suppressed for privacy reasons due to a student population of less than 10.

# District Snapshot

## Carson City School District

### Analysis of Zip Codes with 1- and 2-Star Schools

#### Summary

- The Carson City School District serves approximately 7,933 students in 11 schools across 3 zip codes; and
- In the district, there are 4 schools rated 1 or 2 stars and they serve 2,354 students, or 29.6% of students in the district.

#### Zip Codes with 1- and 2-Star Schools

Zip Code	Total Enrollment	Total # Schools	# 1-2 Star Schools	1-2 Star School Enrollment	% Enrolled in 1-2 Star Schools	# 1-2 Star ES	# 1-2 Star MS	# 1-2 Star HS
89701	4521	5	1	651	14.3	0	1	0
89703	2426	3	1	1267	52.2	0	1	0
89706	986	3	2	436	44.2	1	0	1

#### 1- and 2-Star Schools

School Name	Zip Code	Grades Served <sup>^</sup>	18-19 Star Rating	17-18 Star Rating	Enrollment	% EL	% FRL	% IEP
Carson Montessori ES	89706	ES	2	2	284	*	29.2	5.6
Carson MS	89703	MS	2	3	1267	7.0	54.3	12.6
Eagle Vly MS	89701	MS	2	3	651	10.1	57.1	15.4
Pioneer HS	89706	HS	2	1	152	*	>95	11.2

Tables display zip codes and schools based on 2018-19 Nevada School Performance Framework (NSPF) star ratings. Enrollment is as of October 1, 2019.

<sup>^</sup>In general, elementary schools (ES) serve grades K-5, middle schools (MS) serve grades 6-8, and high schools (HS) serve grades 9-12.

\*Data are suppressed for privacy reasons due to a student population of less than 10.

# District Snapshot

## Churchill County School District

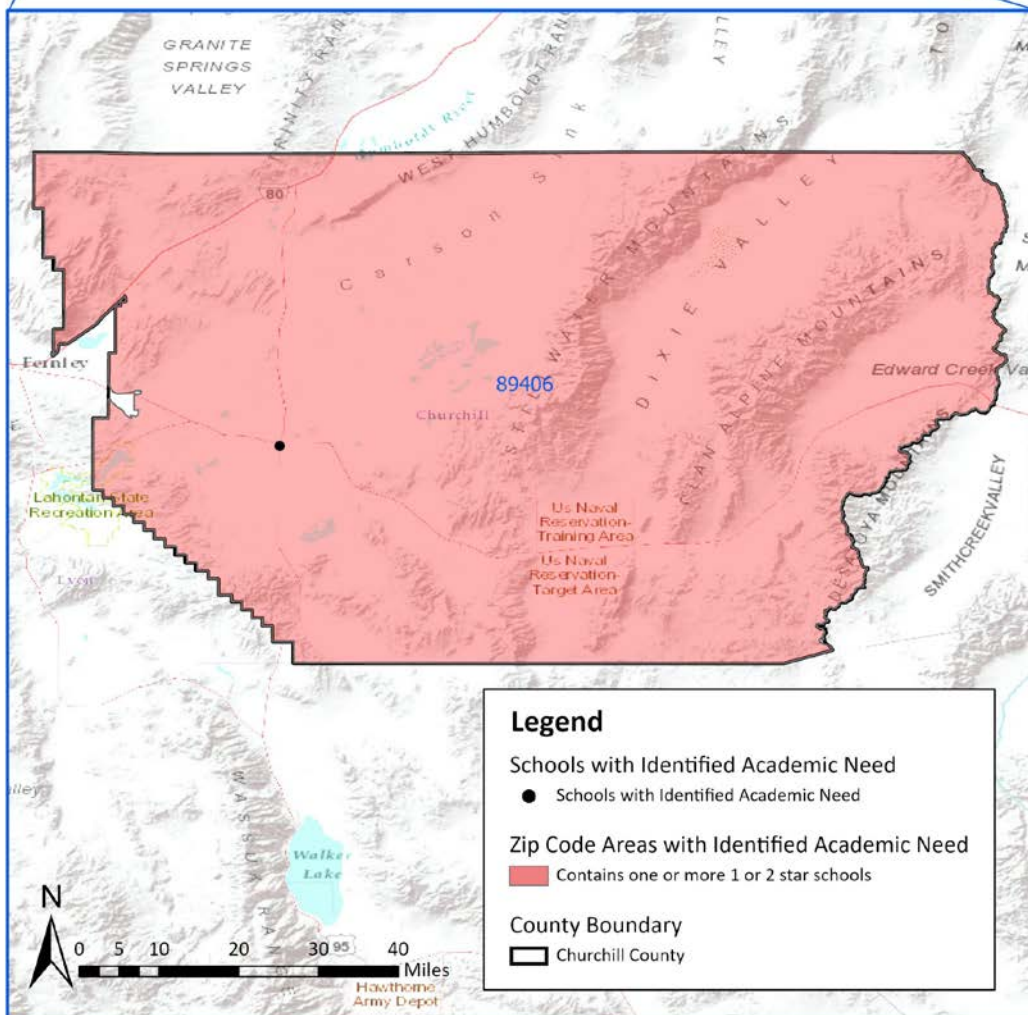
### Analysis of Zip Codes with 1- and 2-Star Schools

#### Summary

- The Churchill County School District serves approximately 3,220 students in 5 schools across 1 zip code; and
- In the district, there is 1 school rated 1 or 2 stars and it serves 783 students, or 24.3% of students in the district.



#### Churchill County, Nevada Zip Code Areas with Identified Academic Need



Tables display zip codes and schools based on 2018-19 Nevada School Performance Framework (NSPF) star ratings. Enrollment is as of October 1, 2019.

^In general, elementary schools (ES) serve grades K-5, middle schools (MS) serve grades 6-8, and high schools (HS) serve grades 9-12.

\*Data are suppressed for privacy reasons due to a student population of less than 10.

## District Snapshot

# Churchill County School District

## Analysis of Zip Codes with 1- and 2-Star Schools

### Summary

- The Churchill County School District serves approximately 3,220 students in 5 schools across 1 zip code; and
- In the district, there is 1 school rated 1 or 2 stars and it serves 783 students, or 24.3% of students in the district.

### Zip Codes with 1- and 2-Star Schools

Zip Code	Total Enrollment	Total # Schools	# 1-2 Star Schools	1-2 Star School Enrollment	% Enrolled in 1-2 Star Schools	# 1-2 Star ES	# 1-2 Star MS	# 1-2 Star HS
89406	3220	5	1	783	24.3	0	1	0

### 1- and 2-Star Schools

School Name	Zip Code	Grades Served <sup>^</sup>	18-19 Star Rating	17-18 Star Rating	Enrollment	% EL	% FRL	% IEP
Churchill Co MS	89406	MS	2	2	783	<5	58.6	16.8

Tables display zip codes and schools based on 2018-19 Nevada School Performance Framework (NSPF) star ratings. Enrollment is as of October 1, 2019.

<sup>^</sup>In general, elementary schools (ES) serve grades K-5, middle schools (MS) serve grades 6-8, and high schools (HS) serve grades 9-12.

\*Data are suppressed for privacy reasons due to a student population of less than 10.



# District Snapshot

## Clark County School District

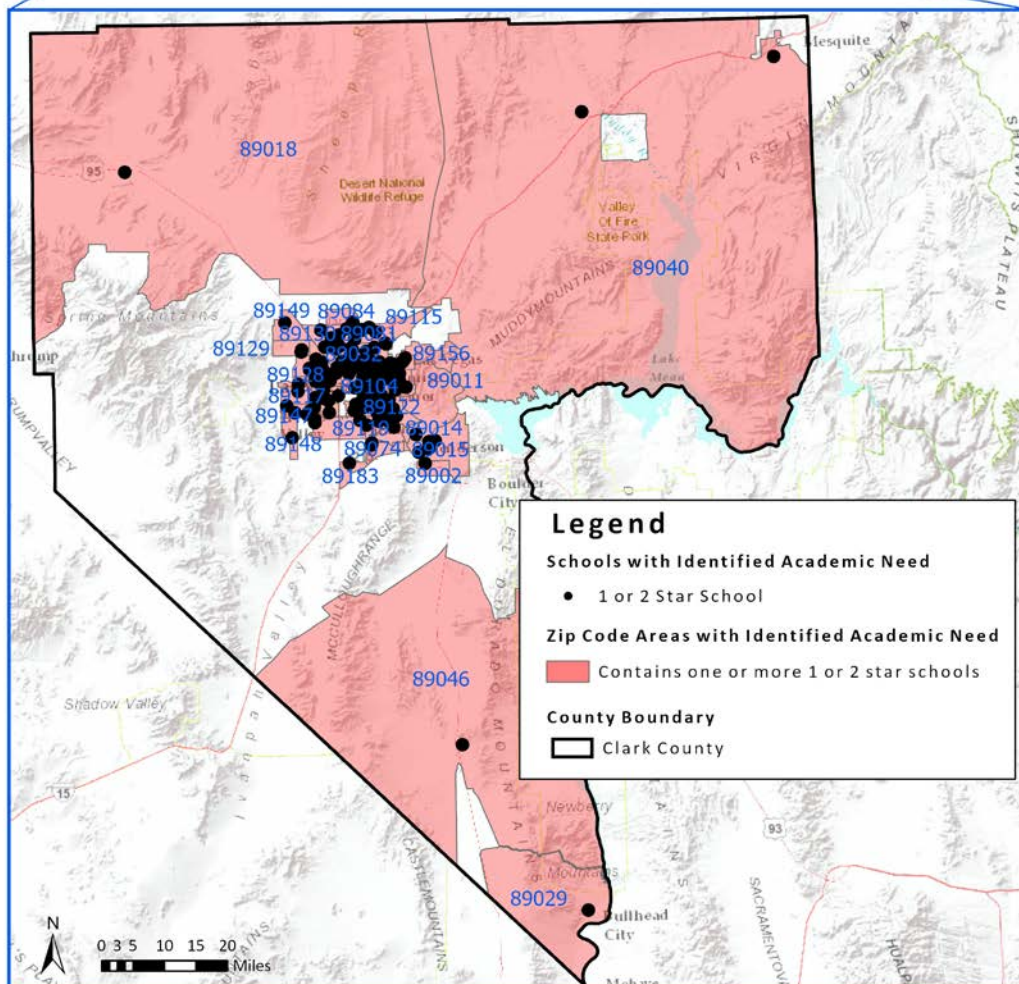
### Analysis of Zip Codes with 1- and 2-Star Schools

#### Summary

- The Clark County School District serves approximately 318,760 students in 394 schools across 65 zip codes; and
- In the district, there are 161 schools rated 1 or 2 stars and they serve 114,495 students, or 35.9% of students in the district.



#### Clark County, Nevada Zip Code Areas with Identified Academic Need



Tables display zip codes and schools based on 2018-19 Nevada School Performance Framework (NSPF) star ratings. Enrollment is as of October 1, 2019.

^In general, elementary schools (ES) serve grades K-5, middle schools (MS) serve grades 6-8, and high schools (HS) serve grades 9-12.

\*Data are suppressed for privacy reasons due to a student population of less than 10.

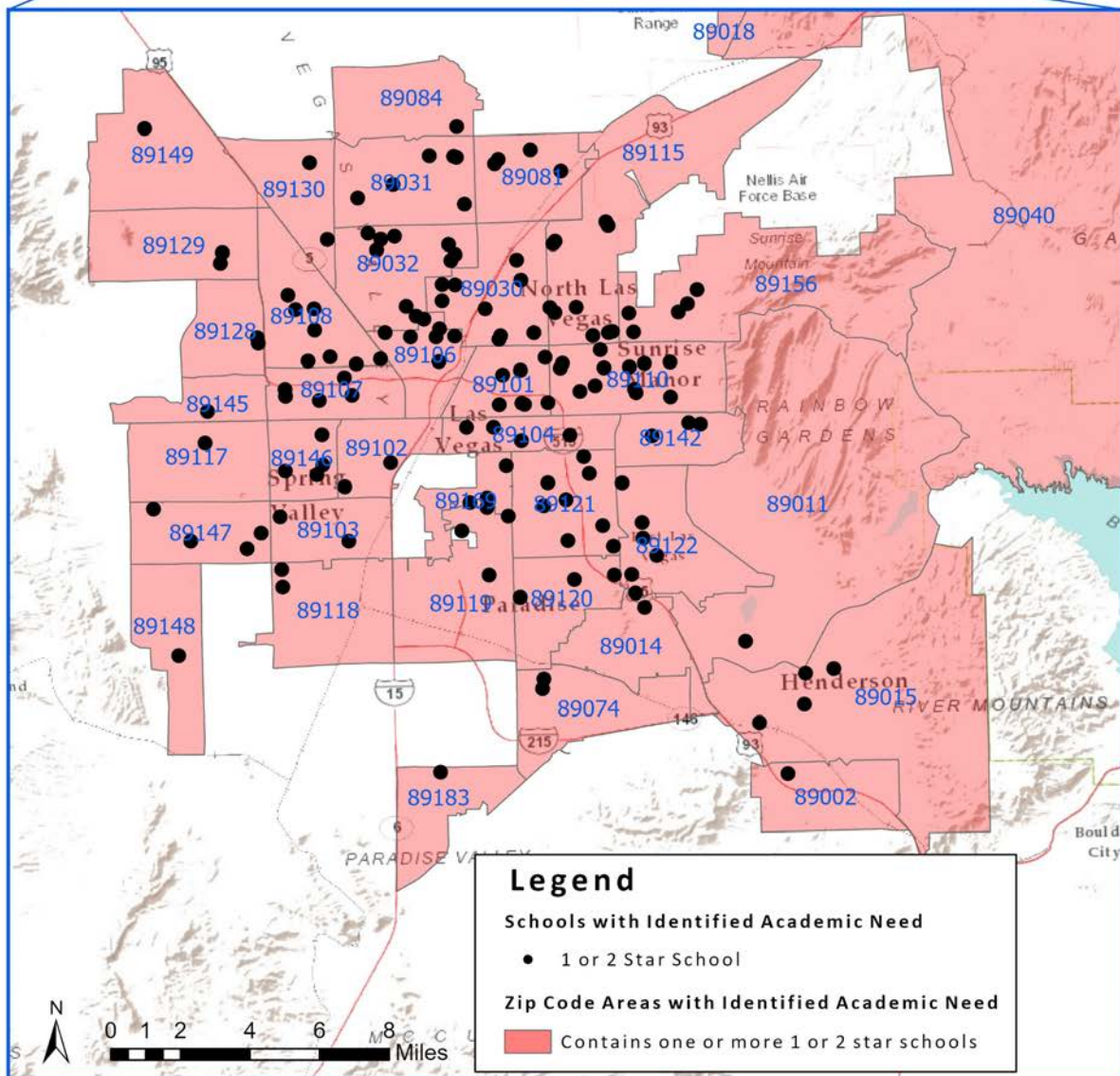
# District Snapshot

## Clark County School District

### Analysis of Zip Codes with 1- and 2-Star Schools



### Las Vegas, Clark County, Nevada Zip Code Areas with Identified Academic Need



Tables display zip codes and schools based on 2018-19 Nevada School Performance Framework (NSPF) star ratings. Enrollment is as of October 1, 2019.

^In general, elementary schools (ES) serve grades K-5, middle schools (MS) serve grades 6-8, and high schools (HS) serve grades 9-12.

\*Data are suppressed for privacy reasons due to a student population of less than 10.

# District Snapshot

## Clark County School District

### Analysis of Zip Codes with 1- and 2-Star Schools

#### Summary

- The Clark County School District serves approximately 318,760 students in 394 schools across 65 zip codes; and
- In the district, there are 161 schools rated 1 or 2 stars and they serve 114,495 students, or 35.9% of students in the district.

Zip Codes with 1- and 2-Star Schools								
Zip Code	Total Enrollment	Total # Schools	# 1-2 Star Schools	1-2 Star School Enrollment	% Enrolled in 1-2 Star Schools	# 1-2 Star ES	# 1-2 Star MS	# 1-2 Star HS
89002	6705	7	1	606	9.0	1	0	0
89007	461	1	1	461	100.0	1	0	0
89011	1349	2	1	383	28.3	1	0	0
89014	6712	6	1	501	7.4	1	0	0
89015	7277	8	4	2854	39.2	2	2	0
89018	250	5	1	103	41.2	1	0	0
89025	120	1	1	120	100.0	1	0	0
89029	740	3	1	357	48.2	1	0	0
89030	9349	16	10	5230	55.9	6	2	2
89031	7740	9	6	4127	53.3	5	1	0
89032	10376	11	10	7671	73.9	6	3	1
89046	26	1	1	26	100.0	1	0	0
89074	4709	6	2	1167	24.7	2	0	0
89081	3089	4	4	3089	100.0	3	1	0
89084	6890	6	1	585	8.4	1	0	0
89101	11421	29	8	4909	42.9	6	2	0
89102	6239	4	2	2329	37.3	1	1	0
89103	3351	5	2	673	20.0	1	0	1
89104	6131	14	4	2164	35.2	3	0	1
89106	6874	13	9	4064	59.1	7	2	0
89107	10361	10	6	7033	67.8	3	2	1
89108	6485	9	7	5235	80.7	6	1	0
89110	15631	16	12	12455	79.6	7	2	3
89115	9641	14	10	8252	85.5	8	2	0
89117	1777	3	1	616	34.6	1	0	0
89118	2477	3	2	1833	74.0	1	1	0
89119	3512	5	3	2236	63.6	2	1	0
89120	7780	9	3	2111	27.1	2	1	0
89121	8271	13	9	5610	67.8	6	3	0
89122	3962	8	6	3907	98.6	4	1	1
89128	4221	4	2	1115	26.4	2	0	0
89129	6237	8	2	1507	24.1	1	1	0

Tables display zip codes and schools based on 2018-19 Nevada School Performance Framework (NSPF) star ratings. Enrollment is as of October 1, 2019.

^In general, elementary schools (ES) serve grades K-5, middle schools (MS) serve grades 6-8, and high schools (HS) serve grades 9-12.

\*Data are suppressed for privacy reasons due to a student population of less than 10.

# District Snapshot

## Clark County School District

### Analysis of Zip Codes with 1- and 2-Star Schools

#### Summary

- The Clark County School District serves approximately 318,760 students in 394 schools across 65 zip codes; and
- In the district, there are 161 schools rated 1 or 2 stars and they serve 114,495 students, or 35.9% of students in the district.

Zip Codes with 1- and 2-Star Schools (continued)								
Zip Code	Total Enrollment	Total # Schools	# 1-2 Star Schools	1-2 Star School Enrollment	% Enrolled in 1-2 Star Schools	# 1-2 Star ES	# 1-2 Star MS	# 1-2 Star HS
89130	3591	5	2	1105	30.7	2	0	0
89142	9657	8	3	3072	31.8	2	1	0
89145	2654	3	1	522	19.6	1	0	0
89146	7065	9	4	2583	36.5	4	0	0
89147	7638	8	4	3032	39.6	3	1	0
89148	6791	7	1	733	10.7	1	0	0
89149	8320	9	1	1078	12.9	0	1	0
89156	6441	6	5	3809	59.1	4	1	0
89169	5250	7	6	4519	86	3	1	2
89183	4192	5	1	713	17	1	0	0

1- and 2-Star Schools								
School Name	Zip Code	Grades Served <sup>^</sup>	18-19 Star Rating	17-18 Star Rating	Enrollment	% EL	% FRL	% IEP
100 Academy 6-8 MS	89032	MS	2	2	151	8.0	>95	8.6
100 Academy ES	89032	ES	2	1	338	8.9	>95	5.3
Adcock ES	89107	ES	2	2	544	35.3	>95	14.9
Antonello ES	89031	ES	1	3	510	14.5	64.5	17.8
Bailey ES	89122	ES	2	1	606	21.6	>95	13.4
Bailey MS	89156	MS	1	1	1431	24.0	>95	12.0
Beckley ES	89121	ES	2	2	834	36.5	>95	11.4
Bell ES	89102	ES	2	1	832	33.5	>95	11.9
Bennett ES	89029	ES	2	2	357	6.2	>95	14.3
Booker ES	89106	ES	2	2	427	29.5	>95	13.4
Bowler Joseph ES	89007	ES	2	1	461	26.0	>95	16.5
Brinley MS	89108	MS	1	1	1063	22.7	>95	14.9
Brookman ES	89110	ES	2	4	679	22.2	68.3	11.8
Brown JHS	89015	MS	2	2	1088	<5	>95	12.6
Bruner ES	89032	ES	2	1	565	20.2	>95	11.5
Bunker ES	89108	ES	2	2	712	23.6	>95	13.8
Burk Horizon SW HS	89103	HS	1	1	40	32.5	60.0	*
Burkholder MS	89015	MS	2	3	647	5.6	>95	15.9

Tables display zip codes and schools based on 2018-19 Nevada School Performance Framework (NSPF) star ratings. Enrollment is as of October 1, 2019.

<sup>^</sup>In general, elementary schools (ES) serve grades K-5, middle schools (MS) serve grades 6-8, and high schools (HS) serve grades 9-12.

\*Data are suppressed for privacy reasons due to a student population of less than 10.



# District Snapshot

## Clark County School District

### Analysis of Zip Codes with 1- and 2-Star Schools

#### Summary

- The Clark County School District serves approximately 318,760 students in 394 schools across 65 zip codes; and
- In the district, there are 161 schools rated 1 or 2 stars and they serve 114,495 students, or 35.9% of students in the district.

1- and 2-Star Schools (continued)								
School Name	Zip Code	Grades Served <sup>^</sup>	18-19 Star Rating	17-18 Star Rating	Enrollment	% EL	% FRL	% IEP
Cannon MS	89120	MS	2	2	994	21.2	>95	14.7
Carl ES	89130	ES	2	2	772	5.6	>95	12.7
Carson ES	89106	ES	2	2	315	22.9	>95	9.5
Cashman MS	89102	MS	2	2	1497	26.3	>95	11.3
Cheyenne HS	89032	HS	2	2	1982	18.9	>95	17.4
Cortney JHS	89122	MS	2	2	1264	20.3	>95	15.7
Cowan Sunset SE HS	89122	HS	1	Not Rated	40	*	*	*
Cox Clyde ES	89115	ES	2	2	730	36.7	>95	13.6
Cox David ES	89074	ES	2	3	587	7.0	>95	10.6
Cozine ES	89031	ES	2	3	660	19.2	>95	17.0
Craig ES	89030	ES	1	2	635	31.8	>95	13.7
Crestwood ES	89104	ES	2	4	670	48.4	>95	11.0
Culley ES	89108	ES	2	1	722	43.2	>95	15.0
Cunningham ES	89122	ES	2	1	757	16.5	>95	8.9
Dearing ES	89121	ES	2	3	839	28.4	>95	12.6
Decker ES	89103	ES	2	2	633	32.1	>95	8.7
Delta Charter HS	89030	HS	1	1	373	9.7	64.9	14.2
Delta Charter MS	89030	MS	2	2	164	11.6	68.3	17.7
Derfelt ES	89117	ES	2	3	616	15.1	>95	12.7
Desert Pines HS	89110	HS	2	2	3053	29.2	>95	12.6
Desert Rose ALT HS	89030	HS	1	1	289	23.5	>95	11.8
Detwiler ES	89106	ES	2	2	639	29.0	>95	12.8
Dickens ES	89081	ES	2	3	732	9.2	>95	13.8
Diskin ES	89147	ES	2	4	586	32.6	>95	15.7
Duncan ES	89084	ES	1	1	585	7.2	>95	13.2
Earl Ira ES	89110	ES	2	2	678	49.6	>95	11.4
Earl Marion ES	89118	ES	2	3	561	18.4	>95	15.9
Edwards ES	89110	ES	2	3	537	39.9	>95	12.3
Eldorado HS	89110	HS	2	2	2057	26.1	>95	12.0
Elizondo ES	89031	ES	1	3	637	19.6	>95	13.5
Escobedo MS	89149	MS	2	2	1078	<5	43.7	12.8
Eva Wolfe ES	89031	ES	2	1	474	15.6	>95	17.1

Tables display zip codes and schools based on 2018-19 Nevada School Performance Framework (NSPF) star ratings. Enrollment is as of October 1, 2019.

<sup>^</sup>In general, elementary schools (ES) serve grades K-5, middle schools (MS) serve grades 6-8, and high schools (HS) serve grades 9-12.

\*Data are suppressed for privacy reasons due to a student population of less than 10.

# District Snapshot

## Clark County School District

### Analysis of Zip Codes with 1- and 2-Star Schools

#### Summary

- The Clark County School District serves approximately 318,760 students in 394 schools across 65 zip codes; and
- In the district, there are 161 schools rated 1 or 2 stars and they serve 114,495 students, or 35.9% of students in the district.

1- and 2-Star Schools (continued)								
School Name	Zip Code	Grades Served <sup>^</sup>	18-19 Star Rating	17-18 Star Rating	Enrollment	% EL	% FRL	% IEP
Ferron ES	89121	ES	2	3	569	24.1	>95	11.8
Findlay MS	89031	MS	1	2	1242	13.4	>95	13.9
Fitzgerald ES	89030	ES	2	2	361	25.2	>95	14.1
Galloway ES	89002	ES	2	2	606	<5	53.3	16.5
Garside JHS	89107	MS	2	2	1249	23.7	>95	12.8
Gene Ward ES	89119	ES	1	2	642	37.4	>95	15.0
Gibson MS	89107	MS	2	3	1273	25.8	>95	11.1
Gilbert ES	89032	ES	2	4	442	12.9	63.8	9.7
Global Community HS	89110	HS	2	1	192	>95	>95	*
Gray ES	89146	ES	2	2	452	28.3	>95	14.6
Griffith ES	89107	ES	2	1	591	37.4	>95	11.7
Hancock ES	89146	ES	1	1	558	22.6	>95	14.2
Harmon ES	89120	ES	1	2	629	33.2	>95	11.9
Harney MS	89142	MS	2	2	1674	15.8	>95	11.2
Harris ES	89121	ES	2	1	601	28.0	>95	16.0
Hayes ES	89147	ES	2	3	538	13.2	>95	16.5
Heard ES	89115	ES	2	2	690	32.8	>95	5.9
Herr ES	89156	ES	1	1	688	31.8	>95	9.5
Hewetson ES	89101	ES	2	2	829	44.4	>95	10.1
Hickey ES	89156	ES	2	2	745	28.9	>95	11.0
Hinman ES	89011	ES	2	2	383	14.1	>95	24.5
Hollingsworth ES	89101	ES	1	1	528	45.6	>95	13.1
Hummel ES	89183	ES	2	2	713	9.4	>95	16.3
Indian Springs ES	89018	ES	1	2	103	*	>95	17.5
Iverson ES	89142	ES	2	3	647	18.9	>95	10.5
Jacobson ES	89145	ES	2	2	522	14.8	>95	11.3
Jeffers ES	89115	ES	2	2	705	47.7	>95	12.3
Jerome Mack MS	89121	MS	2	1	1258	30.5	>95	14.2
Johnston MS	89081	MS	2	1	1314	9.1	>95	16.0
Kahre ES	89129	ES	2	2	431	7.0	>95	15.3
Katz ES	89128	ES	1	2	575	19.5	>95	11.7
Keller ES	89110	ES	2	1	596	40.8	>95	11.2

Tables display zip codes and schools based on 2018-19 Nevada School Performance Framework (NSPF) star ratings. Enrollment is as of October 1, 2019.

<sup>^</sup>In general, elementary schools (ES) serve grades K-5, middle schools (MS) serve grades 6-8, and high schools (HS) serve grades 9-12.

\*Data are suppressed for privacy reasons due to a student population of less than 10.

# District Snapshot

## Clark County School District

### Analysis of Zip Codes with 1- and 2-Star Schools

#### Summary

- The Clark County School District serves approximately 318,760 students in 394 schools across 65 zip codes; and
- In the district, there are 161 schools rated 1 or 2 stars and they serve 114,495 students, or 35.9% of students in the district.

1- and 2-Star Schools (continued)								
School Name	Zip Code	Grades Served <sup>^</sup>	18-19 Star Rating	17-18 Star Rating	Enrollment	% EL	% FRL	% IEP
Keller MS	89110	MS	1	2	1467	27.7	>95	13.7
Kelly ES	89106	ES	1	2	307	6.5	>95	18.9
Kim ES	89147	ES	2	2	462	18.2	>95	16.9
King Martin ES	89156	ES	2	1	409	33.5	>95	14.2
Lawrence JHS	89147	MS	2	3	1446	12.5	67.8	10.4
Lincoln ES	89030	ES	2	2	723	48.1	>95	11.1
Long ES	89104	ES	1	1	779	38.9	>95	9.6
Lowman ES	89115	ES	1	1	783	16.6	>95	11.2
Lunt ES	89101	ES	2	2	555	51.4	>95	11.2
Lynch ES	89115	ES	1	1	603	41.5	>95	10.0
Manch ES	89115	ES	1	1	793	13.2	>95	9.7
Martin MS	89101	MS	2	2	1568	26.3	>95	10.7
McCall ES	89030	ES	1	1	337	42.7	>95	9.5
McMillan ES	89128	ES	2	3	540	16.1	>95	13.3
McWilliams ES	89108	ES	2	2	749	43.8	>95	14.7
Mendoza ES	89142	ES	2	2	751	38.0	>95	11.6
Miley Achvmt ES	89101	ES	1	Not Rated	33	*	>95	>95
Miley Achvmt MS	89101	MS	1	Not Rated	33	*	>95	>95
Miller ES	89121	ES	1	Not Rated	41	26.8	>95	>95
Miller MS	89121	MS	1	Not Rated	34	*	>95	>95
Molasky JHS	89129	MS	1	2	1076	11.3	>95	14.9
Monaco MS	89115	MS	1	1	1269	32.9	>95	14.2
Moore ES	89110	ES	1	1	656	38.3	>95	13.4
Morris Sunset HS	89104	HS	1	1	83	38.6	*	*
Mountain View ES	89156	ES	2	1	536	27.2	>95	10.6
Orr MS	89119	MS	2	1	1110	25.6	>95	14.1
Paradise ES	89119	ES	2	2	484	31.4	>95	14.3
Park ES	89104	ES	2	2	632	35.3	>95	15.7
Parson ES	89130	ES	2	1	333	18.9	>95	13.8
Perkins Claude ES	89032	ES	1	2	559	19.5	>95	18.8
Perkins Ute ES	89025	ES	2	2	120	*	>95	15.8
Petersen ES	89169	ES	1	1	886	32.8	>95	11.0

Tables display zip codes and schools based on 2018-19 Nevada School Performance Framework (NSPF) star ratings. Enrollment is as of October 1, 2019.

<sup>^</sup>In general, elementary schools (ES) serve grades K-5, middle schools (MS) serve grades 6-8, and high schools (HS) serve grades 9-12.

\*Data are suppressed for privacy reasons due to a student population of less than 10.

# District Snapshot

## Clark County School District

### Analysis of Zip Codes with 1- and 2-Star Schools

#### Summary

- The Clark County School District serves approximately 318,760 students in 394 schools across 65 zip codes; and
- In the district, there are 161 schools rated 1 or 2 stars and they serve 114,495 students, or 35.9% of students in the district.

1- and 2-Star Schools (continued)								
School Name	Zip Code	Grades Served <sup>^</sup>	18-19 Star Rating	17-18 Star Rating	Enrollment	% EL	% FRL	% IEP
Priest ES	89032	ES	2	2	674	19.3	>95	13.8
Rainbow Dreams ES	89106	ES	1	1	241	*	>95	5.4
Rainbow Dreams MS	89106	MS	1	2	99	*	>95	*
Red Rock ES	89107	ES	1	1	669	34.2	>95	15.6
Reed ES	89108	ES	2	1	651	27.0	>95	11.8
Reid ES	89046	ES	1	Not Rated	26	*	>95	*
Roberts ES	89074	ES	2	1	580	10.3	>95	12.1
Robison MS	89110	MS	2	2	1309	27.0	>95	12.5
Ronnow ES	89101	ES	2	2	691	46.9	>95	11.3
Ronzone ES	89108	ES	2	2	771	38.4	>95	10.0
Roundy ES	89146	ES	2	3	749	42.3	>95	9.2
Rundle ES	89110	ES	2	1	725	34.5	>95	13.4
Sawyer MS	89118	MS	2	3	1272	18.0	>95	12.3
Scott ES	89081	ES	1	1	593	14.0	>95	14.7
Sedway MS	89032	MS	1	1	1315	22.1	>95	13.5
Sewell ES	89015	ES	2	3	588	7.1	>95	20.1
Smith Hal ES	89122	ES	1	1	810	16.3	>95	12.0
Smith MS	89030	MS	1	2	983	32.7	>95	14.7
Squires ES	89030	ES	2	3	661	53.4	>95	14.4
Stanford ES	89110	ES	2	2	506	30.4	>95	13.2
Stewart Sch ES	89169	ES	1	Not Rated	22	*	>95	>95
Stewart Sch HS	89169	HS	1	Not Rated	56	28.6	>95	>95
Stewart Sch MS	89169	MS	1	Not Rated	24	45.8	>95	>95
Sunrise Acres ES	89101	ES	2	3	672	42.9	>95	13.5
Swainston MS	89032	MS	2	3	1094	15.3	>95	16.8
Tanaka ES	89148	ES	2	2	733	9.0	58.8	13.5
Tartan ES	89081	ES	1	1	450	11.6	>95	21.3
Tate ES	89115	ES	2	3	771	32.7	>95	14.5
Taylor Robert ES	89015	ES	1	1	531	7.7	>95	17.5
Thomas ES	89169	ES	1	2	786	33.6	>95	10.8
Thorpe ES	89014	ES	2	2	501	12.4	>95	10.8
Tom Williams ES	89030	ES	2	3	704	47.6	>95	9.9

Tables display zip codes and schools based on 2018-19 Nevada School Performance Framework (NSPF) star ratings. Enrollment is as of October 1, 2019.

<sup>^</sup>In general, elementary schools (ES) serve grades K-5, middle schools (MS) serve grades 6-8, and high schools (HS) serve grades 9-12.

\*Data are suppressed for privacy reasons due to a student population of less than 10.



# District Snapshot

## Clark County School District

### Analysis of Zip Codes with 1- and 2-Star Schools

#### Summary

- The Clark County School District serves approximately 318,760 students in 394 schools across 65 zip codes; and
- In the district, there are 161 schools rated 1 or 2 stars and they serve 114,495 students, or 35.9% of students in the district.

#### 1- and 2-Star Schools (continued)

School Name	Zip Code	Grades Served <sup>^</sup>	18-19 Star Rating	17-18 Star Rating	Enrollment	% EL	% FRL	% IEP
Tomiyasu ES	89120	ES	2	2	488	19.3	>95	12.5
Twin Lakes ES	89108	ES	2	2	567	48.3	>95	10.2
Ullom ES	89121	ES	2	2	546	35.0	>95	13.0
Valley HS	89169	HS	2	2	2745	27.2	>95	11.3
Von Tobel MS	89115	MS	2	1	1232	28.5	>95	13.9
Watson ES	89031	ES	2	1	604	14.7	>95	14.7
West Prep Acad ES	89106	ES	2	3	467	43.5	>95	5.1
West Prep Sec SEC	89106	MS	1	1	1240	23.3	>95	17.7
Western HS	89107	HS	2	2	2707	30.4	>95	13.9
Whitney ES	89122	ES	1	1	430	20.7	>95	12.3
Wilhelm ES	89032	ES	1	2	551	15.4	>95	12.2
Williams Wendell ES	89106	ES	1	1	329	10.6	>95	12.5
Woodbury MS	89121	MS	1	2	888	22.5	85.1	16.2
Woolley ES	89115	ES	2	2	676	31.1	>95	9.0
Wynn ES	89146	ES	2	1	824	45.3	>95	13.1

Tables display zip codes and schools based on 2018-19 Nevada School Performance Framework (NSPF) star ratings. Enrollment is as of October 1, 2019.

<sup>^</sup>In general, elementary schools (ES) serve grades K-5, middle schools (MS) serve grades 6-8, and high schools (HS) serve grades 9-12.

\*Data are suppressed for privacy reasons due to a student population of less than 10.

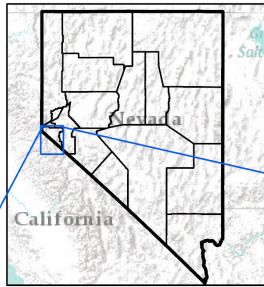
# District Snapshot

## Douglas County School District

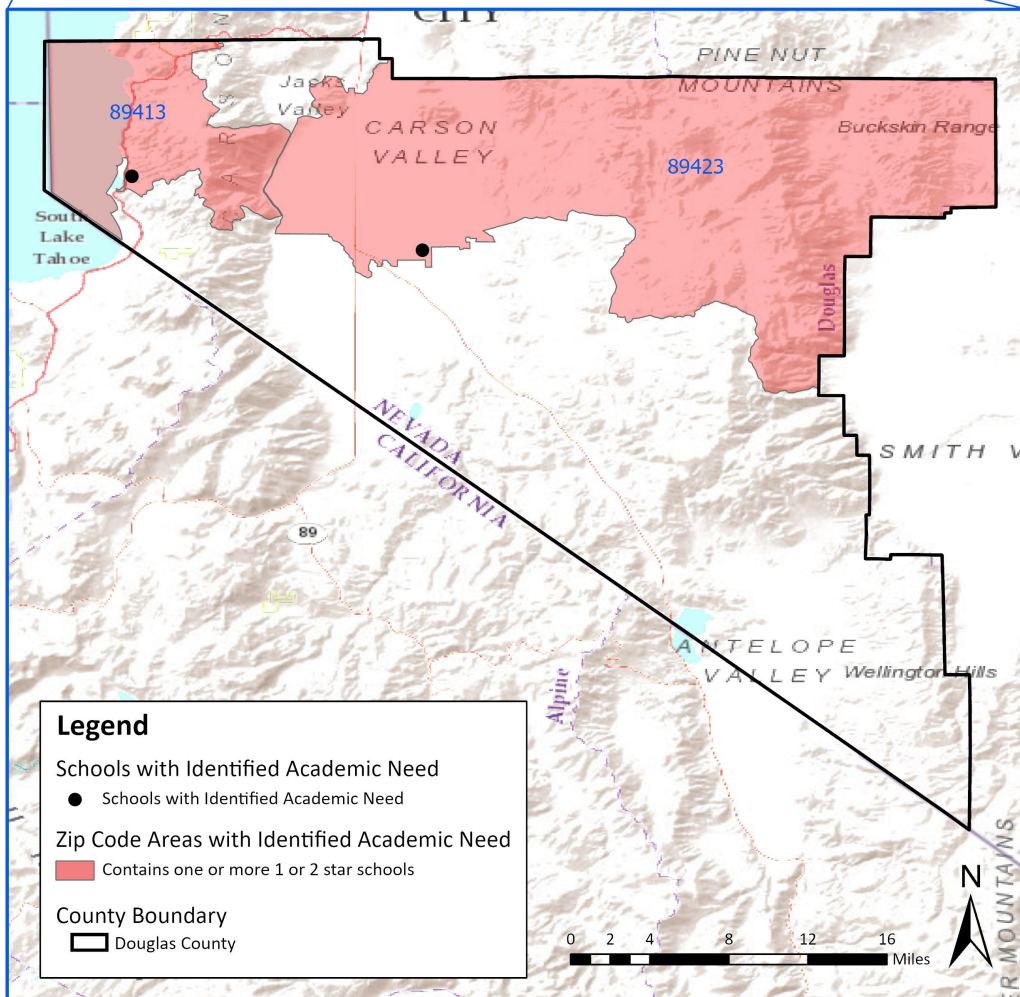
### Analysis of Zip Codes with 1- and 2-Star Schools

#### Summary

- The Douglas County School District serves approximately 5,639 students in 18 schools across 5 zip codes; and
- In the district, there are 2 schools rated 1 or 2 stars and they serve 133 students, or 2.3% of students in the district.



#### Douglas County, Nevada Zip Code Areas with Identified Academic Need



Tables display zip codes and schools based on 2018-19 Nevada School Performance Framework (NSPF) star ratings. Enrollment is as of October 1, 2019.

^In general, elementary schools (ES) serve grades K-5, middle schools (MS) serve grades 6-8, and high schools (HS) serve grades 9-12.

\*Data are suppressed for privacy reasons due to a student population of less than 10.

## District Snapshot

# Douglas County School District

## Analysis of Zip Codes with 1- and 2-Star Schools

### Summary

- The Douglas County School District serves approximately 5,639 students in 18 schools across 5 zip codes; and
- In the district, there are 2 schools rated 1 or 2 stars and they serve 133 students, or 2.3% of students in the district.

### Zip Codes with 1- and 2-Star Schools

Zip Code	Total Enrollment	Total # Schools	# 1-2 Star Schools	1-2 Star School Enrollment	% Enrolled in 1-2 Star Schools	# 1-2 Star ES	# 1-2 Star MS	# 1-2 Star HS
89423	2487	9	1	86	3.4	0	0	1
89448	289	3	1	47	16.2	0	1	0

### 1- and 2-Star Schools

School Name	Zip Code	Grades Served <sup>^</sup>	18-19 Star Rating	17-18 Star Rating	Enrollment	% EL	% FRL	% IEP
ASPIRE HS	89423	HS	1	2	86	*	48.8	16.2
Whittell MS	89448	MS	2	3	47	*	40.4	*

Tables display zip codes and schools based on 2018-19 Nevada School Performance Framework (NSPF) star ratings. Enrollment is as of October 1, 2019.

<sup>^</sup>In general, elementary schools (ES) serve grades K-5, middle schools (MS) serve grades 6-8, and high schools (HS) serve grades 9-12.

\*Data are suppressed for privacy reasons due to a student population of less than 10.

# District Snapshot

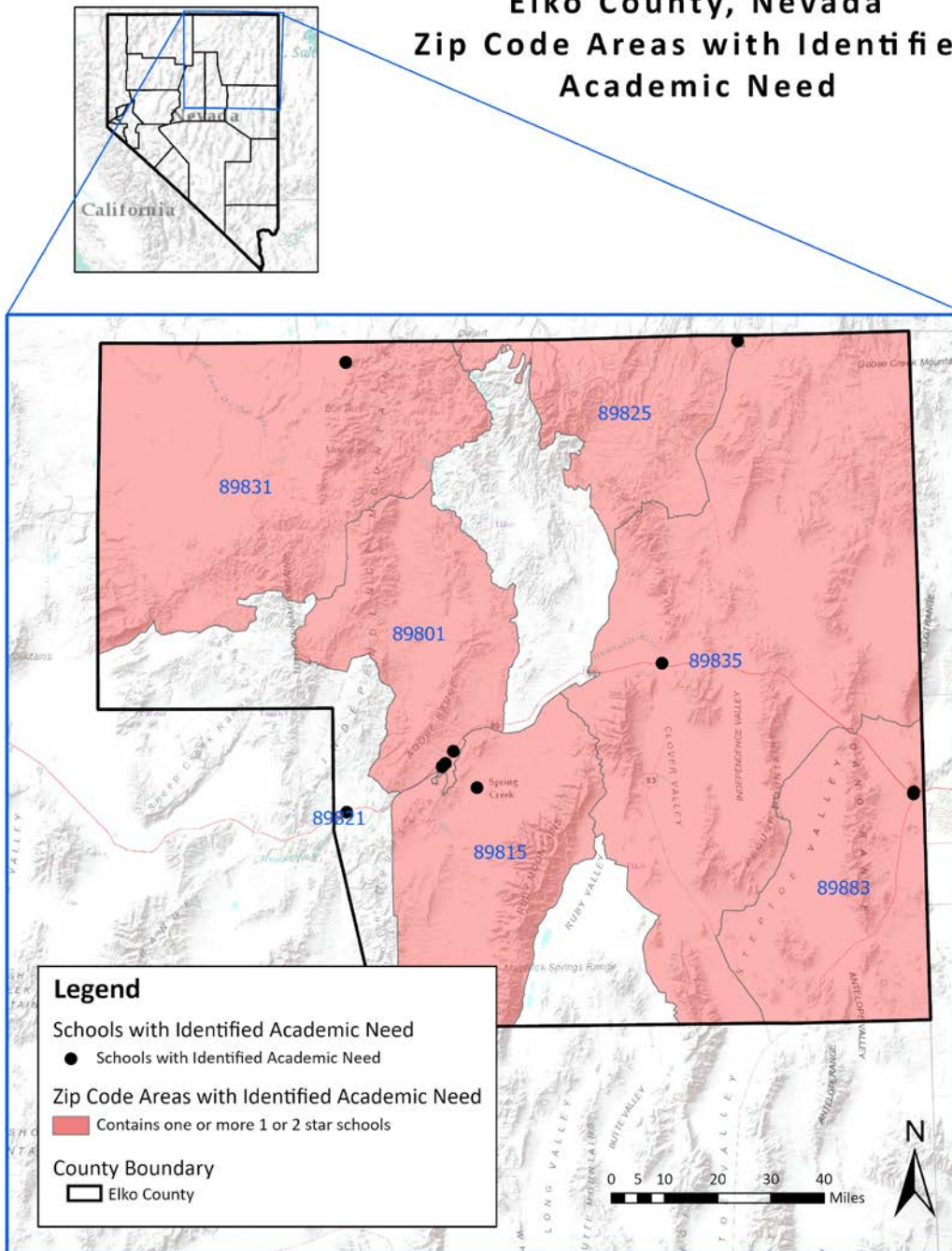
## Elko County School District

### Analysis of Zip Codes with 1- and 2-Star Schools

#### Summary

- The Elko County School District serves approximately 9,986 students in 37 schools across 9 zip codes; and
- In the district, there are 11 schools rated 1 or 2 stars and they serve 2,869 students, or 28.7% of students in the district.

#### Elko County, Nevada Zip Code Areas with Identified Academic Need



Tables display zip codes and schools based on 2018-19 Nevada School Performance Framework (NSPF) star ratings. Enrollment is as of October 1, 2019.

^In general, elementary schools (ES) serve grades K-5, middle schools (MS) serve grades 6-8, and high schools (HS) serve grades 9-12.

\*Data are suppressed for privacy reasons due to a student population of less than 10.

# District Snapshot

## Elko County School District

### Analysis of Zip Codes with 1- and 2-Star Schools

#### Summary

- The Elko County School District serves approximately 9,986 students in 37 schools across 9 zip codes; and
- In the district, there are 11 schools rated 1 or 2 stars and they serve 2,869 students, or 28.7% of students in the district.

**Zip Codes with 1- and 2-Star Schools**

Zip Code	Total Enrollment	Total # Schools	# 1-2 Star Schools	1-2 Star School Enrollment	% Enrolled in 1-2 Star Schools	# 1-2 Star ES	# 1-2 Star MS	# 1-2 Star HS
89801	4815	11	2	1124	23.3	2	0	0
89815	3058	7	1	437	14.2	1	0	0
89822	350	3	2	278	79.4	1	1	0
89825	140	3	1	70	50.0	1	0	0
89832	310	3	2	233	75.1	1	1	0
89835	334	3	1	54	16.1	0	1	0
89883	953	3	2	673	70.6	1	1	0

**1- and 2-Star Schools**

School Name	Zip Code	Grades Served <sup>^</sup>	18-19 Star Rating	17-18 Star Rating	Enrollment	% EL	% FRL	% IEP
Carlin ES	89822	ES	2	2	230	*	51.7	15.2
Carlin JHS	89822	MS	1	2	48	*	39.5	*
Elko Grammar #2 ES	89801	ES	2	3	317	8.2	45.4	13.5
Flagview Int Sch ES	89801	ES	2	2	807	11.2	49.5	14.7
Jackpot ES	89825	ES	2	2	70	27.1	78.5	*
Owyhee ES	89832	ES	1	1	176	6.2	>95	15.9
Owyhee JHS	89832	MS	1	1	57	*	>95	21.0
Sage ES	89815	ES	1	2	437	<5	40.2	11.4
Wells JHS	89835	MS	2	3	54	*	55.5	*
West Wendover ES	89883	ES	2	2	512	27.3	81.6	11.1
West Wendover MS	89883	MS	2	2	161	24.8	80.7	10.5

Tables display zip codes and schools based on 2018-19 Nevada School Performance Framework (NSPF) star ratings. Enrollment is as of October 1, 2019.

<sup>^</sup>In general, elementary schools (ES) serve grades K-5, middle schools (MS) serve grades 6-8, and high schools (HS) serve grades 9-12.

\*Data are suppressed for privacy reasons due to a student population of less than 10.



## District Snapshot

# Esmeralda County School District

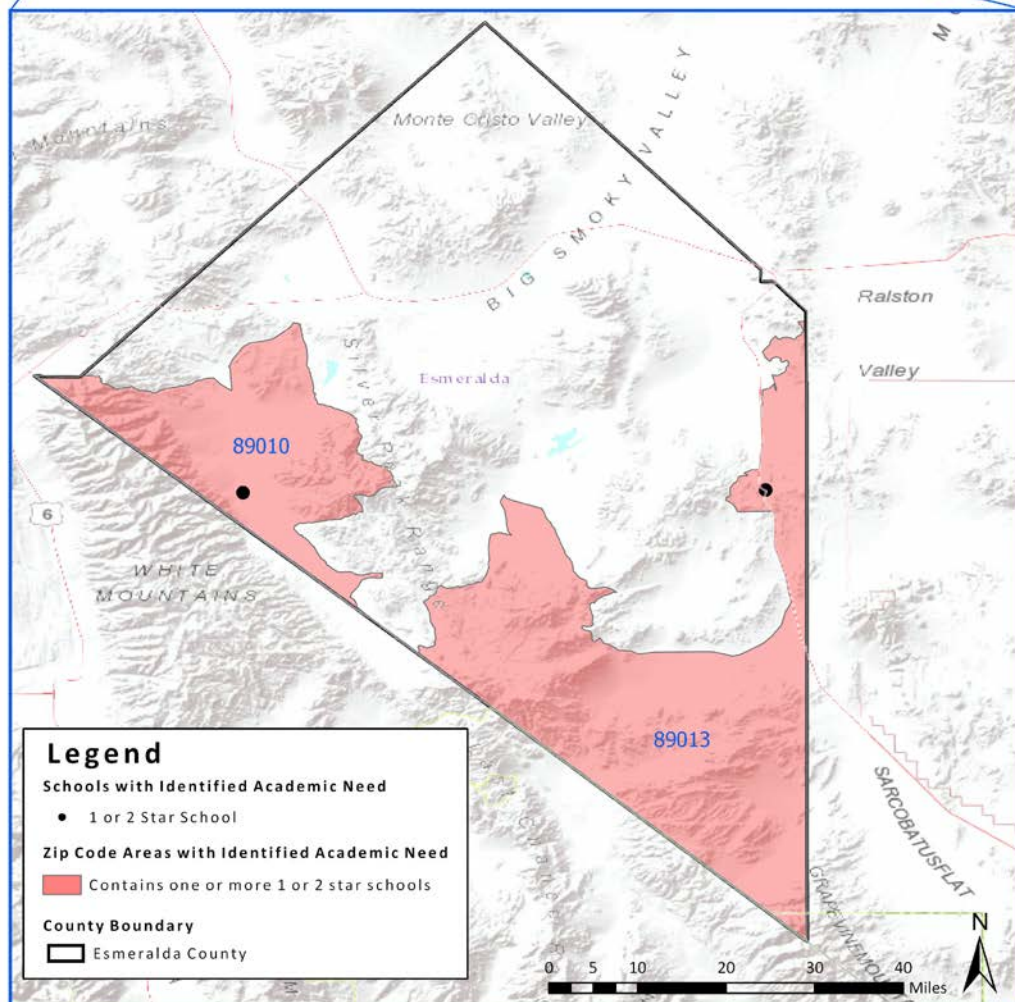
## Analysis of Zip Codes with 1- and 2-Star Schools

### Summary

- The Esmeralda County School District serves approximately 73 students in 6 schools across 3 zip codes; and
- In the district, there are 2 schools rated 1 or 2 stars and they serve 34 students, or 46.5% of students in the district.



### Esmeralda County, Nevada Zip Code Areas with Identified Academic Need



Tables display zip codes and schools based on 2018-19 Nevada School Performance Framework (NSPF) star ratings. Enrollment is as of October 1, 2019.

^In general, elementary schools (ES) serve grades K-5, middle schools (MS) serve grades 6-8, and high schools (HS) serve grades 9-12.

\*Data are suppressed for privacy reasons due to a student population of less than 10.

# District Snapshot

## Esmeralda County School District

### Analysis of Zip Codes with 1- and 2-Star Schools

#### Summary

- The Esmeralda County School District serves approximately 73 students in 6 schools across 3 zip codes; and
- In the district, there are 2 schools rated 1 or 2 stars and they serve 34 students, or 46.5% of students in the district.

**Zip Codes with 1- and 2-Star Schools**

Zip Code	Total Enrollment	Total # Schools	# 1-2 Star Schools	1-2 Star School Enrollment	% Enrolled in 1-2 Star Schools	# 1-2 Star ES	# 1-2 Star MS	# 1-2 Star HS
89010	36	2	1	21	58.3	1	0	0
89013	31	2	1	13	41.9	0	1	0

**1- and 2-Star Schools**

School Name	Zip Code	Grades Served <sup>^</sup>	18-19 Star Rating	17-18 Star Rating	Enrollment	% EL	% FRL	% IEP
Dyer ES	89010	ES	1	1	21	*	61.9	*
Goldfield ES	89013	MS	1	Not Rated	13	*	*	*

Tables display zip codes and schools based on 2018-19 Nevada School Performance Framework (NSPF) star ratings. Enrollment is as of October 1, 2019.

<sup>^</sup>In general, elementary schools (ES) serve grades K-5, middle schools (MS) serve grades 6-8, and high schools (HS) serve grades 9-12.

\*Data are suppressed for privacy reasons due to a student population of less than 10.

# District Snapshot

## Eureka County School District

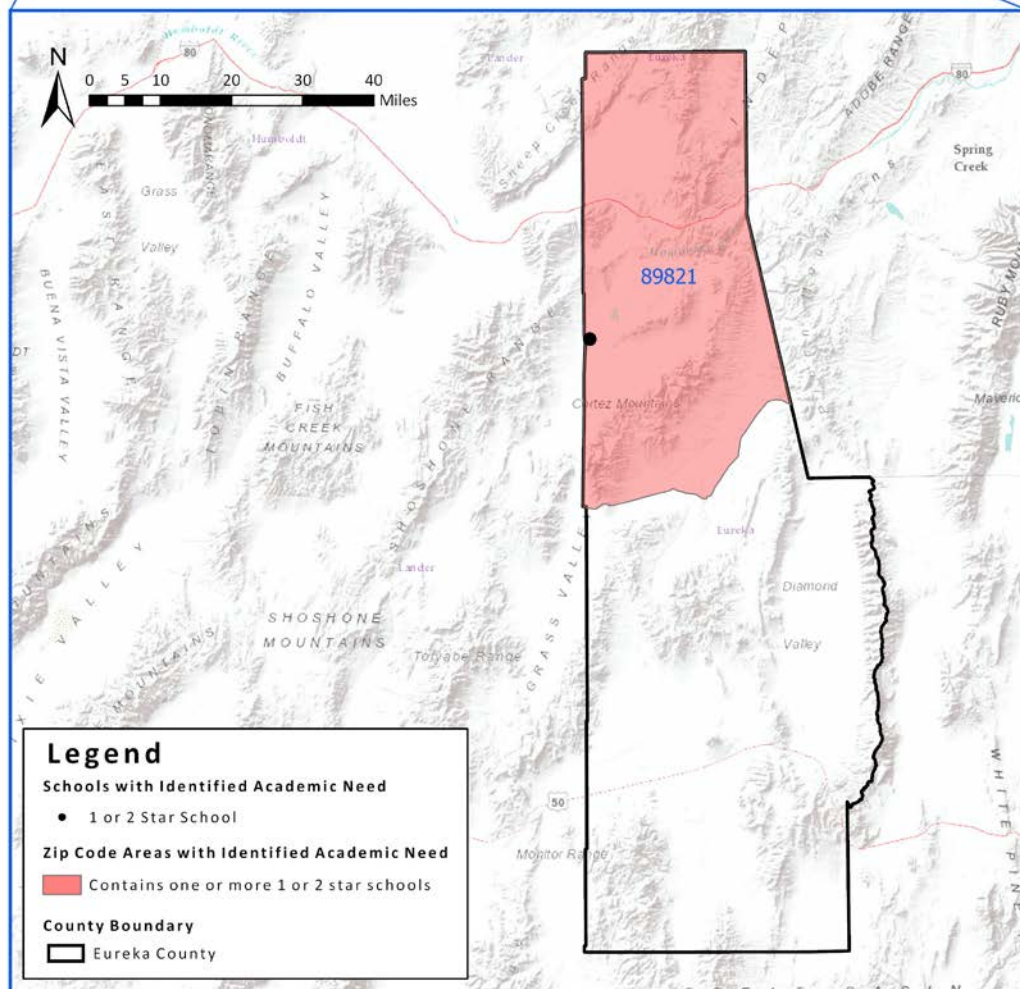
### Analysis of Zip Codes with 1- and 2-Star Schools

#### Summary

- The Eureka County School District serves approximately 323 students in 4 schools across 2 zip codes; and
- In the district, there is 1 school rated 1 or 2 stars and it serves 37 students, or 11.4% of students in the district.



#### Eureka County, Nevada Zip Code Areas with Identified Academic Need



Tables display zip codes and schools based on 2018-19 Nevada School Performance Framework (NSPF) star ratings. Enrollment is as of October 1, 2019.

^In general, elementary schools (ES) serve grades K-5, middle schools (MS) serve grades 6-8, and high schools (HS) serve grades 9-12.

\*Data are suppressed for privacy reasons due to a student population of less than 10.



# District Snapshot

## Eureka County School District

### Analysis of Zip Codes with 1- and 2-Star Schools

#### Summary

- The Eureka County School District serves approximately 323 students in 4 schools across 2 zip codes; and
- In the district, there is 1 school rated 1 or 2 stars and it serves 37 students, or 11.4% of students in the district.

#### Zip Codes with 1- and 2-Star Schools

Zip Code	Total Enrollment	Total # Schools	# 1-2 Star Schools	1-2 Star School Enrollment	% Enrolled in 1-2 Star Schools	# 1-2 Star ES	# 1-2 Star MS	# 1-2 Star HS
89821	37	1	1	37	100.0	1	0	0

#### 1- and 2-Star Schools

School Name	Zip Code	Grades Served <sup>^</sup>	18-19 Star Rating	17-18 Star Rating	Enrollment	% EL	% FRL	% IEP
Crescent Vly ES	89821	ES	2	3	37	*	48.6	*

Tables display zip codes and schools based on 2018-19 Nevada School Performance Framework (NSPF) star ratings. Enrollment is as of October 1, 2019.

<sup>^</sup>In general, elementary schools (ES) serve grades K-5, middle schools (MS) serve grades 6-8, and high schools (HS) serve grades 9-12.

\*Data are suppressed for privacy reasons due to a student population of less than 10.

## District Snapshot

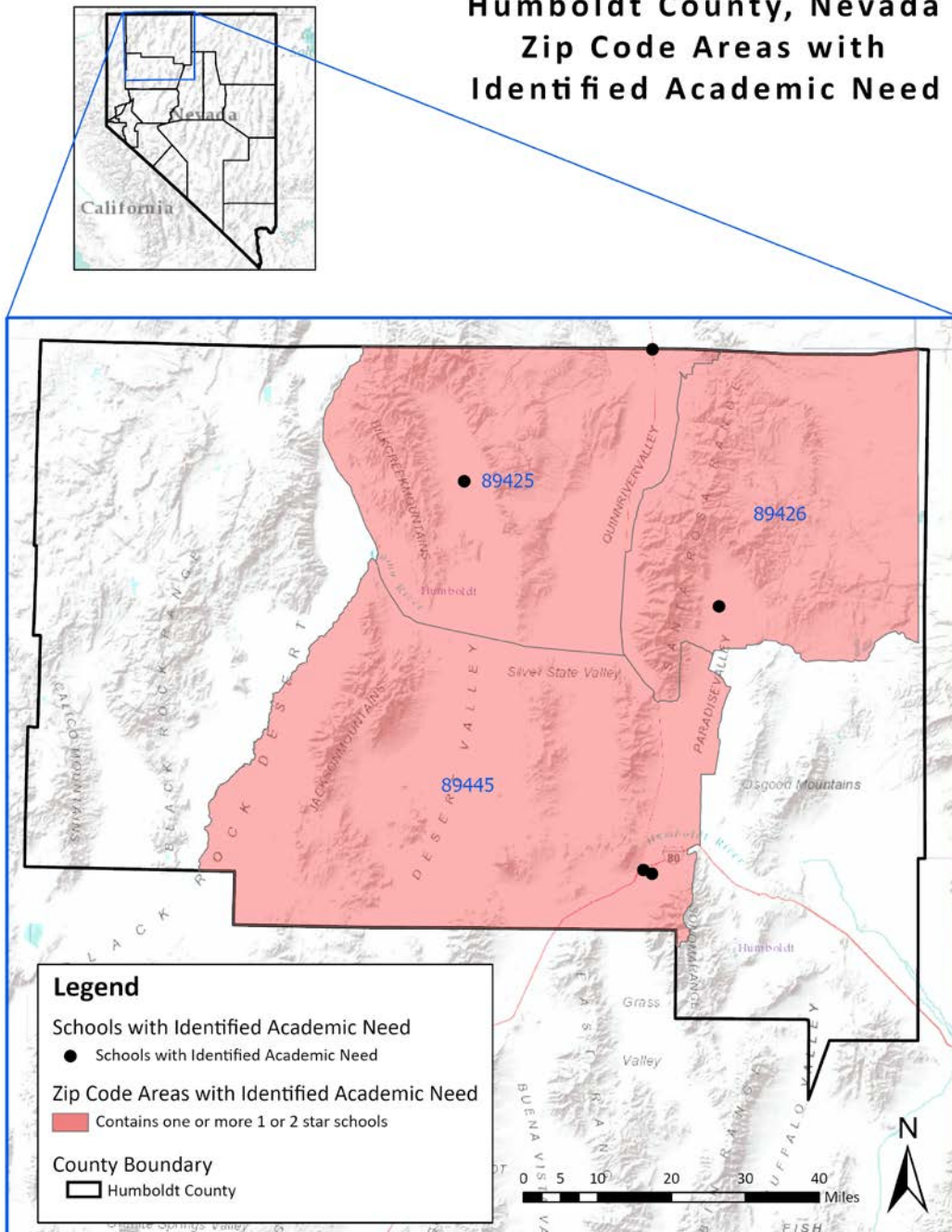
# Humboldt County School District

## Analysis of Zip Codes with 1- and 2-Star Schools

### Summary

- The Humboldt County School District serves approximately 3,349 students in 21 schools across 5 zip codes; and
- In the district, there are 6 schools rated 1 or 2 stars and they serve 1,135 students, or 33.8% of students in the district.

### Humboldt County, Nevada Zip Code Areas with Identified Academic Need



Tables display zip codes and schools based on 2018-19 Nevada School Performance Framework (NSPF) star ratings. Enrollment is as of October 1, 2019.

^In general, elementary schools (ES) serve grades K-5, middle schools (MS) serve grades 6-8, and high schools (HS) serve grades 9-12.

\*Data are suppressed for privacy reasons due to a student population of less than 10.

## District Snapshot

# Humboldt County School District

## Analysis of Zip Codes with 1- and 2-Star Schools

### Summary

- The Humboldt County School District serves approximately 3,349 students in 21 schools across 5 zip codes; and
- In the district, there are 6 schools rated 1 or 2 stars and they serve 1,135 students, or 33.8% of students in the district.

### Zip Codes with 1- and 2-Star Schools

Zip Code	Total Enrollment	Total # Schools	# 1-2 Star Schools	1-2 Star School Enrollment	% Enrolled in 1-2 Star Schools	# 1-2 Star ES	# 1-2 Star MS	# 1-2 Star HS
89421	109	3	2	81	74.3	1	1	0
89425	39	4	1	21	53.8	1	0	0
89426	29	2	1	18	62.0	1	0	0
89445	3166	10	2	1015	32.0	1	1	0

### 1- and 2-Star Schools

School Name	Zip Code	Grades Served <sup>^</sup>	18-19 Star Rating	17-18 Star Rating	Enrollment	% EL	% FRL	% IEP
French Ford MS	89445	ES	2	1	524	9.3	55.5	12.0
McDermitt ES	89421	ES	1	1	65	*	>95	*
McDermitt JHS	89421	MS	1	1	16	*	>95	*
Orovada ES	89425	ES	2	Not Rated	21	*	52.3	*
Paradise Vly ES	89426	ES	2	Not Rated	18	*	*	*
Winnemucca JHS	89445	MS	2	2	491	8.1	48.6	16.5

Tables display zip codes and schools based on 2018-19 Nevada School Performance Framework (NSPF) star ratings. Enrollment is as of October 1, 2019.

<sup>^</sup>In general, elementary schools (ES) serve grades K-5, middle schools (MS) serve grades 6-8, and high schools (HS) serve grades 9-12.

\*Data are suppressed for privacy reasons due to a student population of less than 10.

# District Snapshot

## Lander County School District

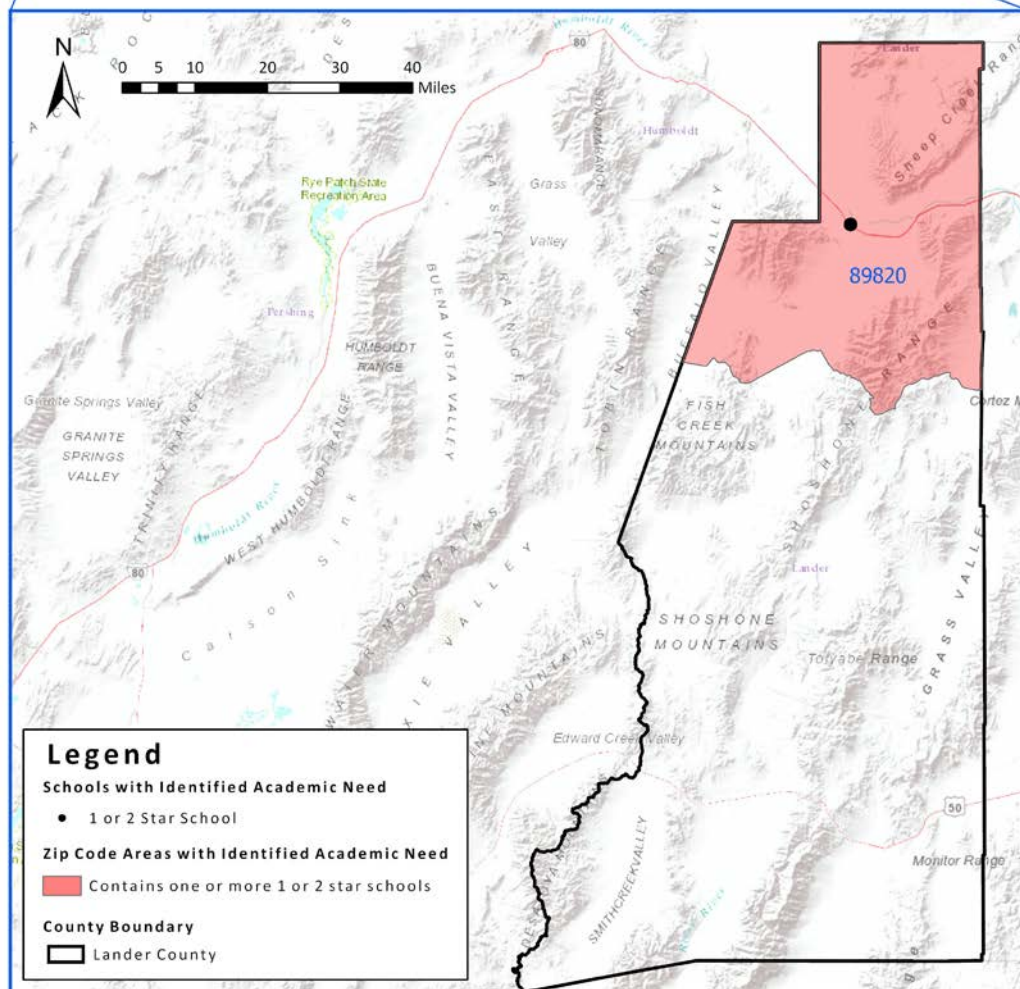
### Analysis of Zip Codes with 1- and 2-Star Schools

#### Summary

- The Lander County School District serves approximately 984 students in 6 schools across 2 zip codes; and
- In the district, there is 1 school rated 1 or 2 stars and it serves 486 students, or 49.3% of students in the district.



#### Lander County, Nevada Zip Code Areas with Identified Academic Need



Tables display zip codes and schools based on 2018-19 Nevada School Performance Framework (NSPF) star ratings. Enrollment is as of October 1, 2019.

^In general, elementary schools (ES) serve grades K-5, middle schools (MS) serve grades 6-8, and high schools (HS) serve grades 9-12.

\*Data are suppressed for privacy reasons due to a student population of less than 10.

# District Snapshot

## Lander County School District

### Analysis of Zip Codes with 1- and 2-Star Schools

#### Summary

- The Lander County School District serves approximately 984 students in 6 schools across 2 zip codes; and
- In the district, there is 1 school rated 1 or 2 stars and it serves 486 students, or 49.3% of students in the district.

#### Zip Codes with 1- and 2-Star Schools

Zip Code	Total Enrollment	Total # Schools	# 1-2 Star Schools	1-2 Star School Enrollment	% Enrolled in 1-2 Star Schools	# 1-2 Star ES	# 1-2 Star MS	# 1-2 Star HS
89820	978	3	1	486	49.6	1	0	0

#### 1- and 2-Star Schools

School Name	Zip Code	Grades Served <sup>^</sup>	18-19 Star Rating	17-18 Star Rating	Enrollment	% EL	% FRL	% IEP
Battle Mtn ES	89820	ES	2	4	486	8.2	47.9	10.0

Tables display zip codes and schools based on 2018-19 Nevada School Performance Framework (NSPF) star ratings. Enrollment is as of October 1, 2019.

<sup>^</sup>In general, elementary schools (ES) serve grades K-5, middle schools (MS) serve grades 6-8, and high schools (HS) serve grades 9-12.

\*Data are suppressed for privacy reasons due to a student population of less than 10.



# District Snapshot

## Lincoln County School District

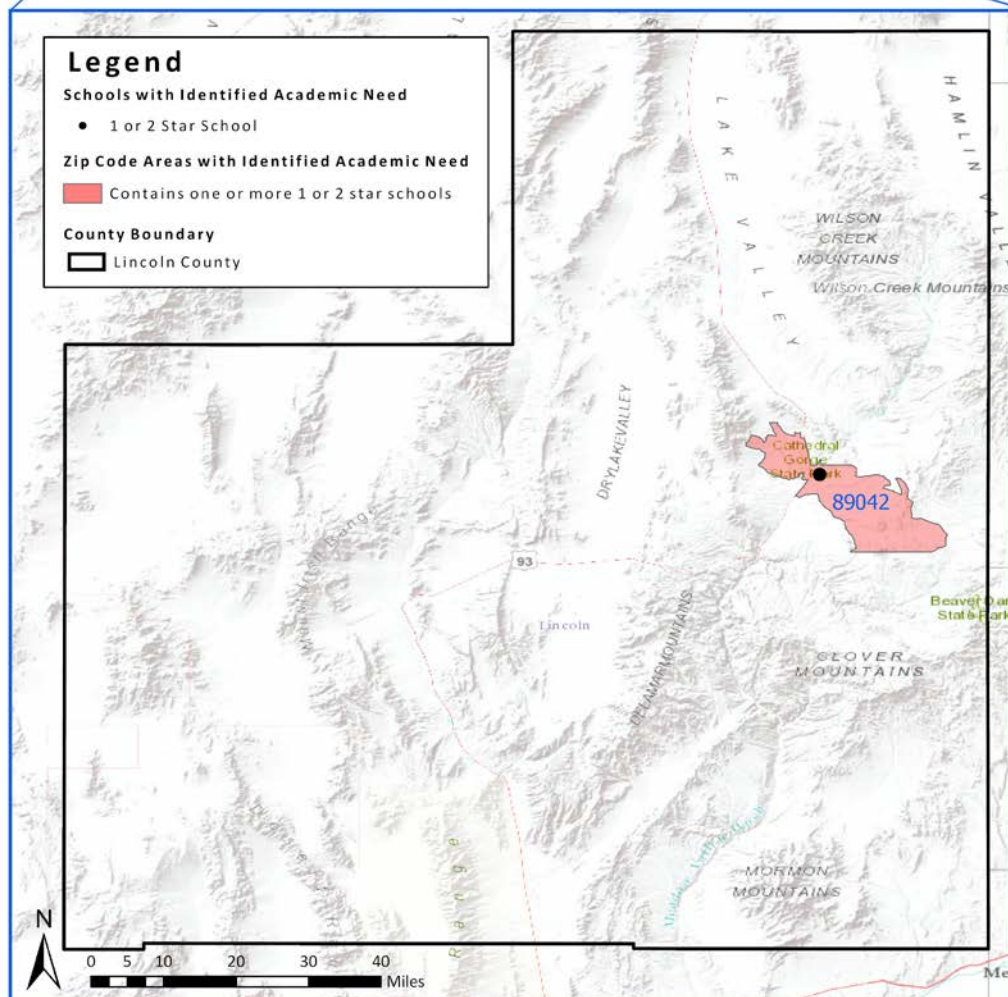
### Analysis of Zip Codes with 1- and 2-Star Schools

#### Summary

- The Lincoln County School District serves approximately 849 students in 10 schools across 4 zip codes; and
- In the district, there is 1 school rated 1 or 2 stars and it serves 72 students, or 8.4% of students in the district.



#### Lincoln County, Nevada Zip Code Areas with Identified Academic Need



Tables display zip codes and schools based on 2018-19 Nevada School Performance Framework (NSPF) star ratings. Enrollment is as of October 1, 2019.

^In general, elementary schools (ES) serve grades K-5, middle schools (MS) serve grades 6-8, and high schools (HS) serve grades 9-12.

\*Data are suppressed for privacy reasons due to a student population of less than 10.

## District Snapshot

# Lincoln County School District

## Analysis of Zip Codes with 1- and 2-Star Schools

### Summary

- The Lincoln County School District serves approximately 849 students in 10 schools across 4 zip codes; and
- In the district, there is 1 school rated 1 or 2 stars and it serves 72 students, or 8.4% of students in the district.

### Zip Codes with 1- and 2-Star Schools

Zip Code	Total Enrollment	Total # Schools	# 1-2 Star Schools	1-2 Star School Enrollment	% Enrolled in 1-2 Star Schools	# 1-2 Star ES	# 1-2 Star MS	# 1-2 Star HS
89042	347	3	1	72	20.7	0	1	0

### 1- and 2-Star Schools

School Name	Zip Code	Grades Served <sup>^</sup>	18-19 Star Rating	17-18 Star Rating	Enrollment	% EL	% FRL	% IEP
Meadow Vly MS	89042	MS	2	2	72	*	61.1	*

Tables display zip codes and schools based on 2018-19 Nevada School Performance Framework (NSPF) star ratings. Enrollment is as of October 1, 2019.

<sup>^</sup>In general, elementary schools (ES) serve grades K-5, middle schools (MS) serve grades 6-8, and high schools (HS) serve grades 9-12.

\*Data are suppressed for privacy reasons due to a student population of less than 10.

# District Snapshot

## Lyon County School District

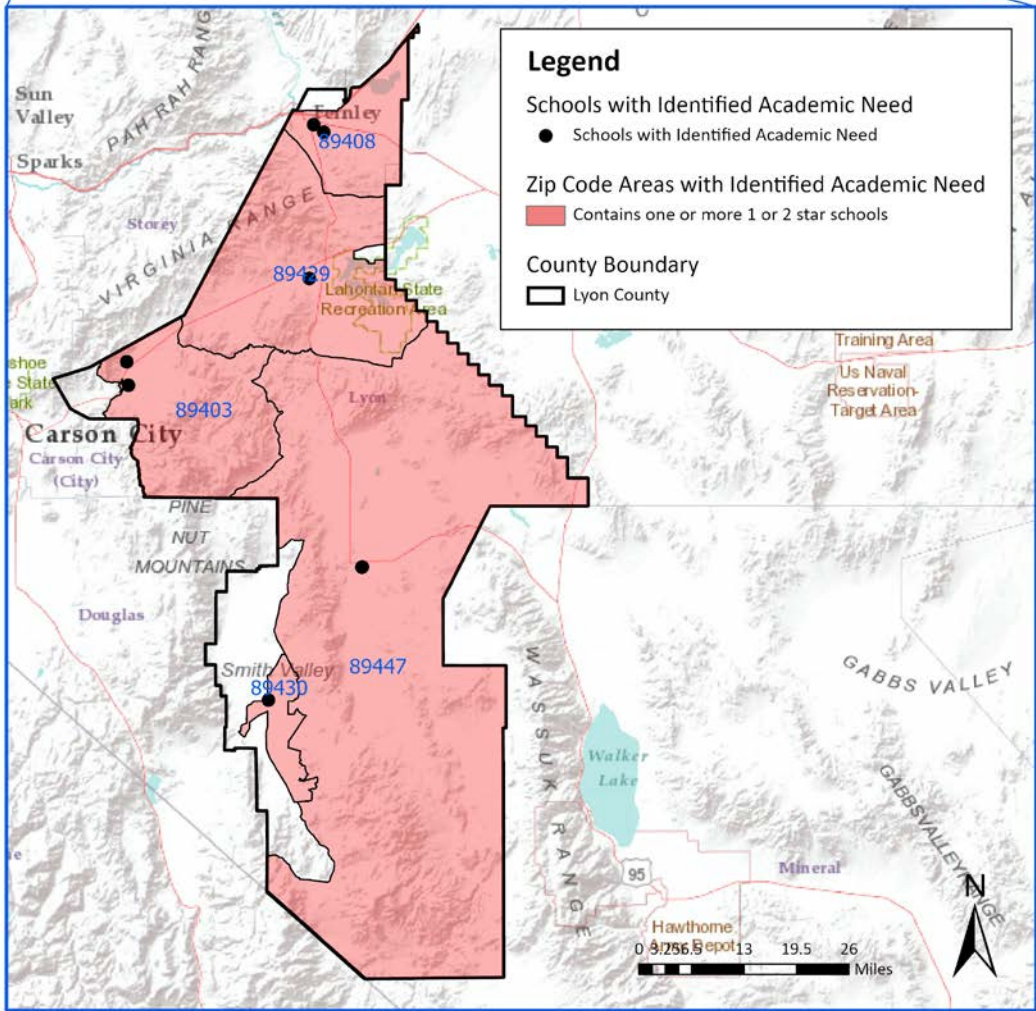
### Analysis of Zip Codes with 1- and 2-Star Schools

#### Summary

- The Lyon County School District serves approximately 8,767 students in 22 schools across 5 zip codes; and
- In the district, there are 9 schools rated 1 or 2 stars and they serve 3,160 students, or 36% of students in the district.



#### Lyon County, Nevada Zip Code Areas with Identified Academic Need



Tables display zip codes and schools based on 2018-19 Nevada School Performance Framework (NSPF) star ratings. Enrollment is as of October 1, 2019.  
 ^In general, elementary schools (ES) serve grades K-5, middle schools (MS) serve grades 6-8, and high schools (HS) serve grades 9-12.  
 \*Data are suppressed for privacy reasons due to a student population of less than 10.



# District Snapshot

## Lyon County School District

### Analysis of Zip Codes with 1- and 2-Star Schools

#### Summary

- The Lyon County School District serves approximately 8,767 students in 22 schools across 5 zip codes; and
- In the district, there are 9 schools rated 1 or 2 stars and they serve 3,160 students, or 36% of students in the district.

**Zip Codes with 1- and 2-Star Schools**

Zip Code	Total Enrollment	Total # Schools	# 1-2 Star Schools	1-2 Star School Enrollment	% Enrolled in 1-2 Star Schools	# 1-2 Star ES	# 1-2 Star MS	# 1-2 Star HS
89403	2292	5	2	771	33.6	1	1	0
89408	4048	6	2	1047	25.8	2	0	0
89429	948	5	1	329	34.7	1	0	0
89430	199	3	2	126	63.3	1	1	0
89447	1280	3	2	887	69.2	1	1	0

**1- and 2-Star Schools**

School Name	Zip Code	Grades Served <sup>^</sup>	18-19 Star Rating	17-18 Star Rating	Enrollment	% EL	% FRL	% IEP
Cottonwood ES	89408	ES	2	2	602	<5	40.7	14.9
Dayton MS	89403	MS	2	2	408	5.1	37.9	10.5
Fernley ES	89408	ES	2	3	445	8.7	44.9	16.8
Silver Springs ES	89429	ES	2	1	329	*	49.5	14.8
Smith Valley Sch ES	89430	ES	2	3	91	*	25.2	*
Smith Valley Sch MS	89430	MS	1	3	35	*	*	*
Sutro ES	89403	ES	2	2	363	10.1	43.2	11.5
Yerington ES	89447	ES	1	2	483	25.2	43.0	11.1
Yerington MS	89447	MS	2	2	404	10.4	46.7	15.1

Tables display zip codes and schools based on 2018-19 Nevada School Performance Framework (NSPF) star ratings. Enrollment is as of October 1, 2019.

<sup>^</sup>In general, elementary schools (ES) serve grades K-5, middle schools (MS) serve grades 6-8, and high schools (HS) serve grades 9-12.

\*Data are suppressed for privacy reasons due to a student population of less than 10.

# District Snapshot

## Mineral County School District

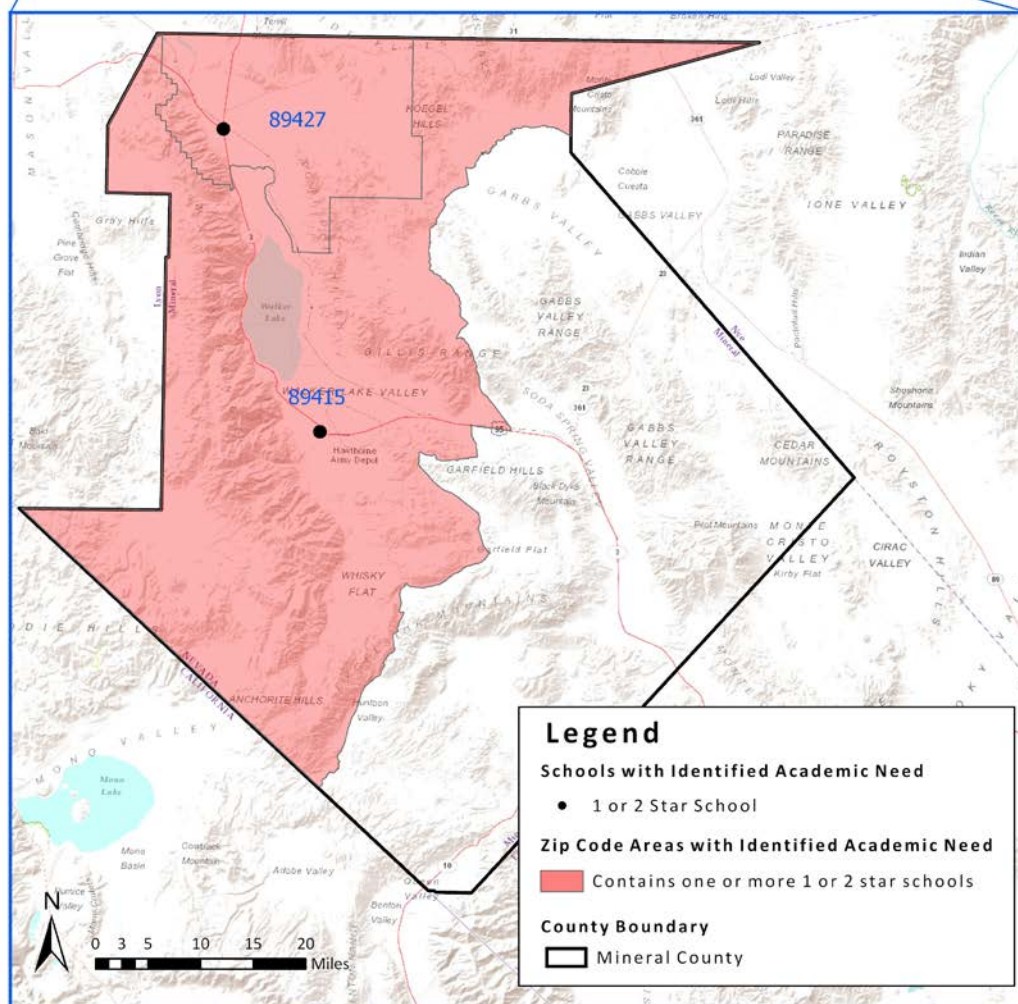
### Analysis of Zip Codes with 1- and 2-Star Schools

#### Summary

- The Mineral County School District serves approximately 532 students in 4 schools across 2 zip codes; and
- In the district, there are 2 schools rated 1 or 2 stars and they serve 136 students, or 25.5% of students in the district.



#### Mineral County, Nevada Zip Code Areas with Identified Academic Need



Tables display zip codes and schools based on 2018-19 Nevada School Performance Framework (NSPF) star ratings. Enrollment is as of October 1, 2019.

^In general, elementary schools (ES) serve grades K-5, middle schools (MS) serve grades 6-8, and high schools (HS) serve grades 9-12.

\*Data are suppressed for privacy reasons due to a student population of less than 10.

## District Snapshot

# Mineral County School District

## Analysis of Zip Codes with 1- and 2-Star Schools

### Summary

- The Mineral County School District serves approximately 532 students in 4 schools across 2 zip codes; and
- In the district, there are 2 schools rated 1 or 2 stars and they serve 136 students, or 25.5% of students in the district.

### Zip Codes with 1- and 2-Star Schools

Zip Code	Total Enrollment	Total # Schools	# 1-2 Star Schools	1-2 Star School Enrollment	% Enrolled in 1-2 Star Schools	# 1-2 Star ES	# 1-2 Star MS	# 1-2 Star HS
89415	474	3	1	78	16.4	0	1	0
89427	58	1	1	58	100.0	1	0	0

### 1- and 2-Star Schools

School Name	Zip Code	Grades Served <sup>^</sup>	18-19 Star Rating	17-18 Star Rating	Enrollment	% EL	% FRL	% IEP
Hawthorne JHS	89415	MS	1	2	78	*	>95	*
Schurz ES	89427	ES	1	1	58	>95	>95	*

Tables display zip codes and schools based on 2018-19 Nevada School Performance Framework (NSPF) star ratings. Enrollment is as of October 1, 2019.

<sup>^</sup>In general, elementary schools (ES) serve grades K-5, middle schools (MS) serve grades 6-8, and high schools (HS) serve grades 9-12.

\*Data are suppressed for privacy reasons due to a student population of less than 10.

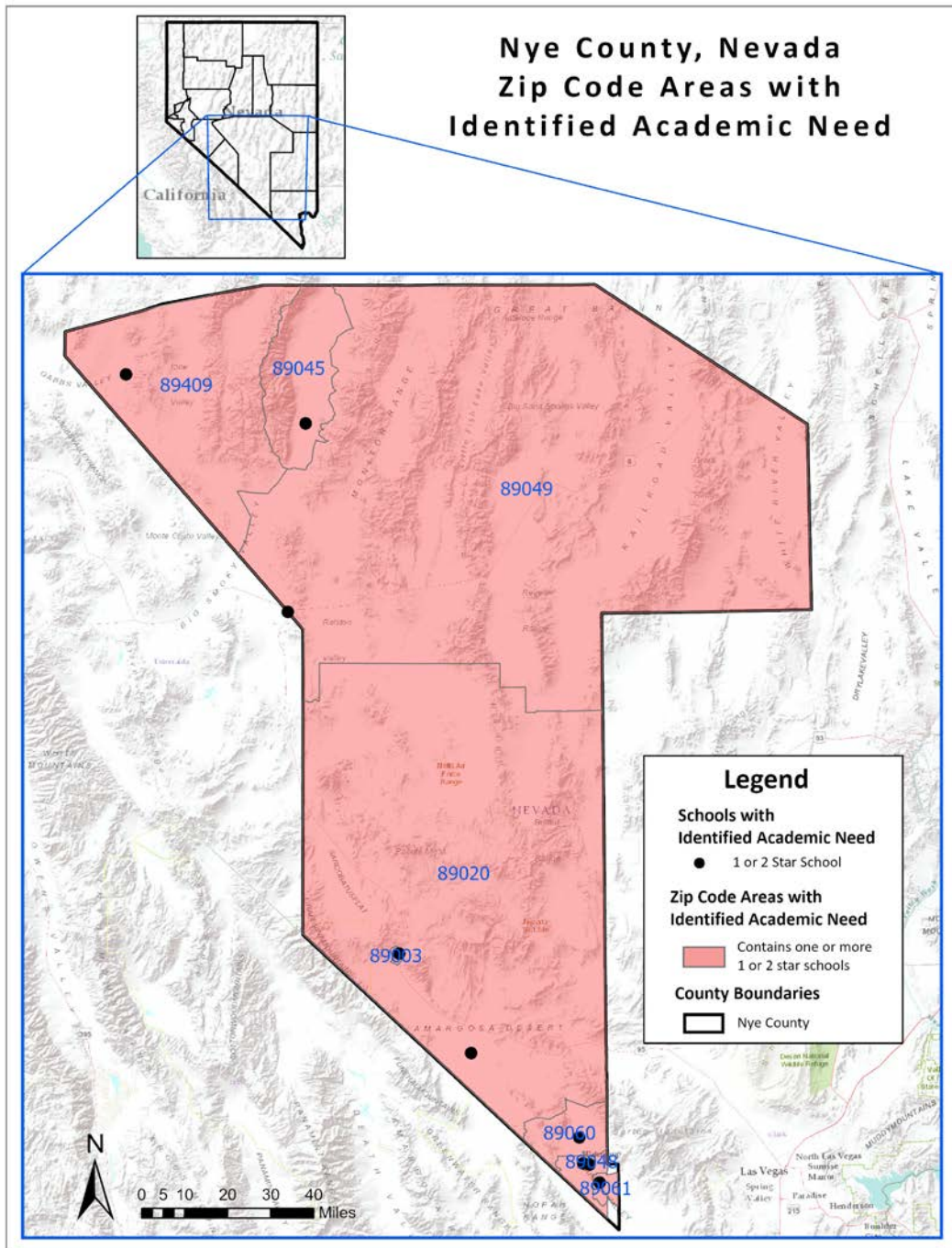
# District Snapshot

## Nye County School District

### Analysis of Zip Codes with 1- and 2-Star Schools

#### Summary

- The Nye County School District serves approximately 5,356 students in 27 schools across 9 zip codes; and
- In the district, there are 12 schools rated 1 or 2 stars and they serve 2,754 students, or 51.4% of students in the district.



Tables display zip codes and schools based on 2018-19 Nevada School Performance Framework (NSPF) star ratings. Enrollment is as of October 1, 2019.

^In general, elementary schools (ES) serve grades K-5, middle schools (MS) serve grades 6-8, and high schools (HS) serve grades 9-12.

\*Data are suppressed for privacy reasons due to a student population of less than 10.

# District Snapshot

## Nye County School District

### Analysis of Zip Codes with 1- and 2-Star Schools

#### Summary

- The Nye County School District serves approximately 5,356 students in 27 schools across 9 zip codes; and
- In the district, there are 12 schools rated 1 or 2 stars and they serve 2,754 students, or 51.4% of students in the district.

Zip Codes with 1- and 2-Star Schools								
Zip Code	Total Enrollment	Total # Schools	# 1-2 Star Schools	1-2 Star School Enrollment	% Enrolled in 1-2 Star Schools	# 1-2 Star ES	# 1-2 Star MS	# 1-2 Star HS
89003	191	3	1	27	14.1	0	1	0
89020	129	2	1	86	66.6	1	0	0
89045	273	3	2	207	75.8	1	1	0
89048	1921	5	3	633	32.9	1	1	1
89049	364	5	2	236	64.8	1	1	0
89060	1516	2	1	1039	68.5	0	1	0
89061	904	2	1	502	55.5	1	0	0
89409	44	3	1	24	54.5	1	0	0

1- and 2-Star Schools									
School Name	Zip Code	Grades Served <sup>^</sup>	18-19 Star Rating	17-18 Star Rating	Enrollment	% EL	% FRL	% IEP	
Amargosa Vly ES	89020	ES	1	2	86	44.1	>95	*	
Beatty MS	89003	MS	1	2	27	*	>95	*	
Clarke MS	89060	MS	2	2	1039	7.1	>95	15.5	
Floyd ES	89061	ES	2	3	502	6.9	>95	12.7	
Gabbs ES	89409	ES	1	Not Rated	24	*	>95	*	
Johnson ES	89048	ES	2	1	437	8.2	>95	13.7	
Pathways HS ALT	89048	HS	1	1	152	*	84.2	9.8	
Pathways MS ALT	89048	MS	1	1	44	*	81.8	22.7	
Round Mtn ES	89045	ES	1	1	138	*	>95	*	
Round Mtn MS	89045	MS	2	1	69	*	>95	14.4	
Tonopah ES	89049	ES	2	1	160	6.2	>95	*	
Tonopah MS	89049	MS	1	2	76	*	>95	14.4	

Tables display zip codes and schools based on 2018-19 Nevada School Performance Framework (NSPF) star ratings. Enrollment is as of October 1, 2019.

<sup>^</sup>In general, elementary schools (ES) serve grades K-5, middle schools (MS) serve grades 6-8, and high schools (HS) serve grades 9-12.

\*Data are suppressed for privacy reasons due to a student population of less than 10.



## District Snapshot

# Pershing County School District

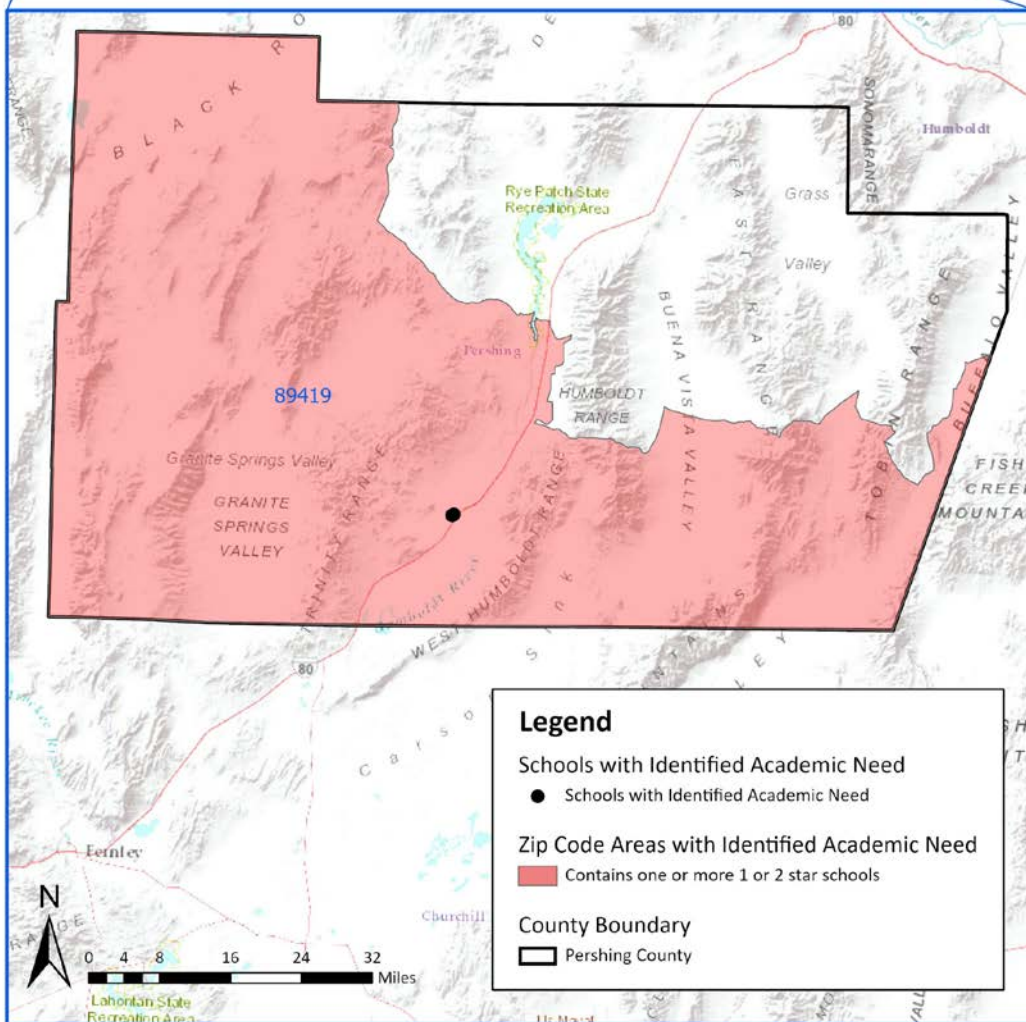
## Analysis of Zip Codes with 1- and 2-Star Schools

### Summary

- The Pershing County School District serves approximately 658 students in 4 schools across 1 zip code; and
- In the district, there are 2 schools rated 1 or 2 stars and they serve 464 students, or 70.5% of students in the district.



### Pershing County, Nevada Zip Code Areas with Identified Academic Need



Tables display zip codes and schools based on 2018-19 Nevada School Performance Framework (NSPF) star ratings. Enrollment is as of October 1, 2019.

^In general, elementary schools (ES) serve grades K-5, middle schools (MS) serve grades 6-8, and high schools (HS) serve grades 9-12.

\*Data are suppressed for privacy reasons due to a student population of less than 10.

## District Snapshot

# Pershing County School District

## Analysis of Zip Codes with 1- and 2-Star Schools

### Summary

- The Pershing County School District serves approximately 658 students in 4 schools across 1 zip code; and
- In the district, there are 2 schools rated 1 or 2 stars and they serve 464 students, or 70.5% of students in the district.

### Zip Codes with 1- and 2-Star Schools

Zip Code	Total Enrollment	Total # Schools	# 1-2 Star Schools	1-2 Star School Enrollment	% Enrolled in 1-2 Star Schools	# 1-2 Star ES	# 1-2 Star MS	# 1-2 Star HS
89419	658	4	2	464	70.5	1	1	0

### 1- and 2-Star Schools

School Name	Zip Code	Grades Served <sup>^</sup>	18-19 Star Rating	17-18 Star Rating	Enrollment	% EL	% FRL	% IEP
Lovelock ES	89419	ES	2	2	311	10.9	63.0	15.1
Pershing MS	89419	MS	1	1	153	*	51.0	17.0

Tables display zip codes and schools based on 2018-19 Nevada School Performance Framework (NSPF) star ratings. Enrollment is as of October 1, 2019.

<sup>^</sup>In general, elementary schools (ES) serve grades K-5, middle schools (MS) serve grades 6-8, and high schools (HS) serve grades 9-12.

\*Data are suppressed for privacy reasons due to a student population of less than 10.



# District Snapshot

## Storey County School District

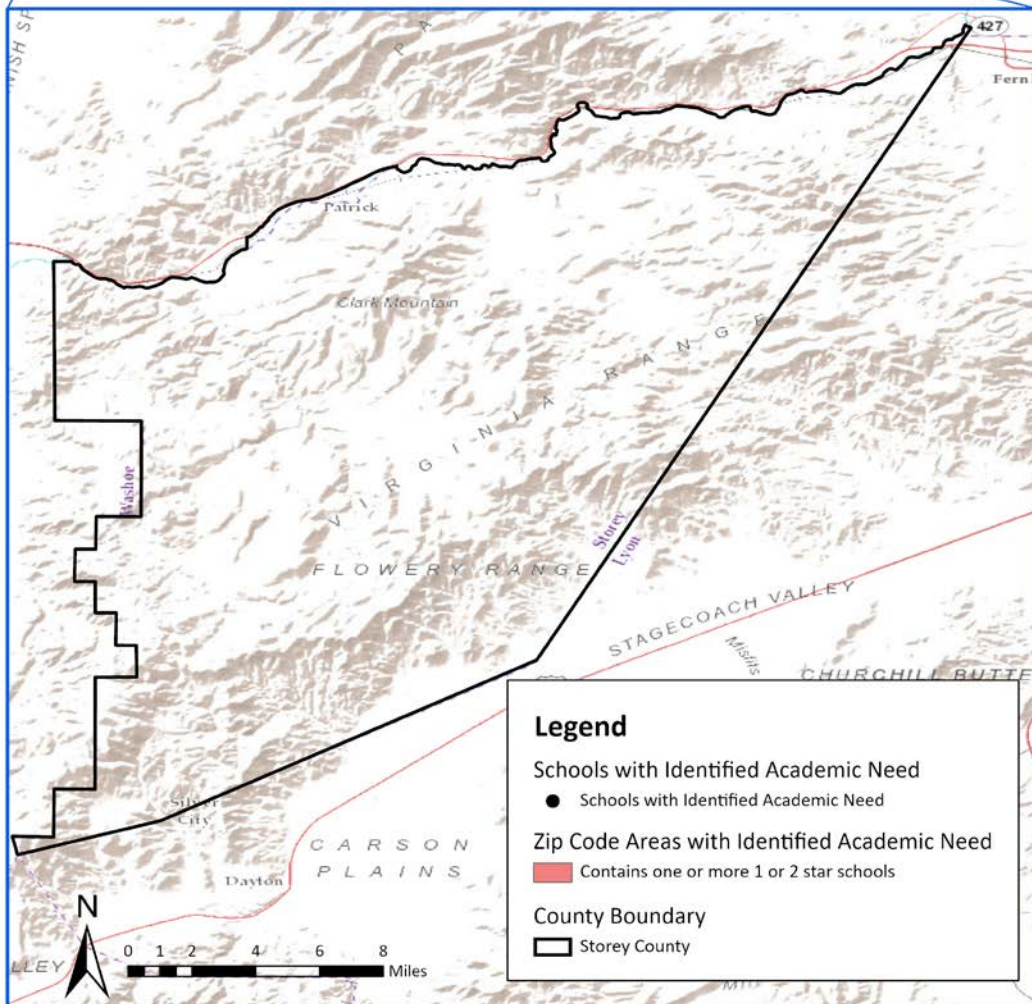
### Analysis of Zip Codes with 1- and 2-Star Schools

#### Summary

- The Storey County School District serves approximately 440 students in 4 schools across 2 zip codes; and
- In the district, there are 0 schools rated 1 or 2 stars.



#### Storey County, Nevada Zip Code Areas with Identified Academic Need



Tables display zip codes and schools based on 2018-19 Nevada School Performance Framework (NSPF) star ratings. Enrollment is as of October 1, 2019.

^In general, elementary schools (ES) serve grades K-5, middle schools (MS) serve grades 6-8, and high schools (HS) serve grades 9-12.

\*Data are suppressed for privacy reasons due to a student population of less than 10.

# District Snapshot

## Washoe County School District

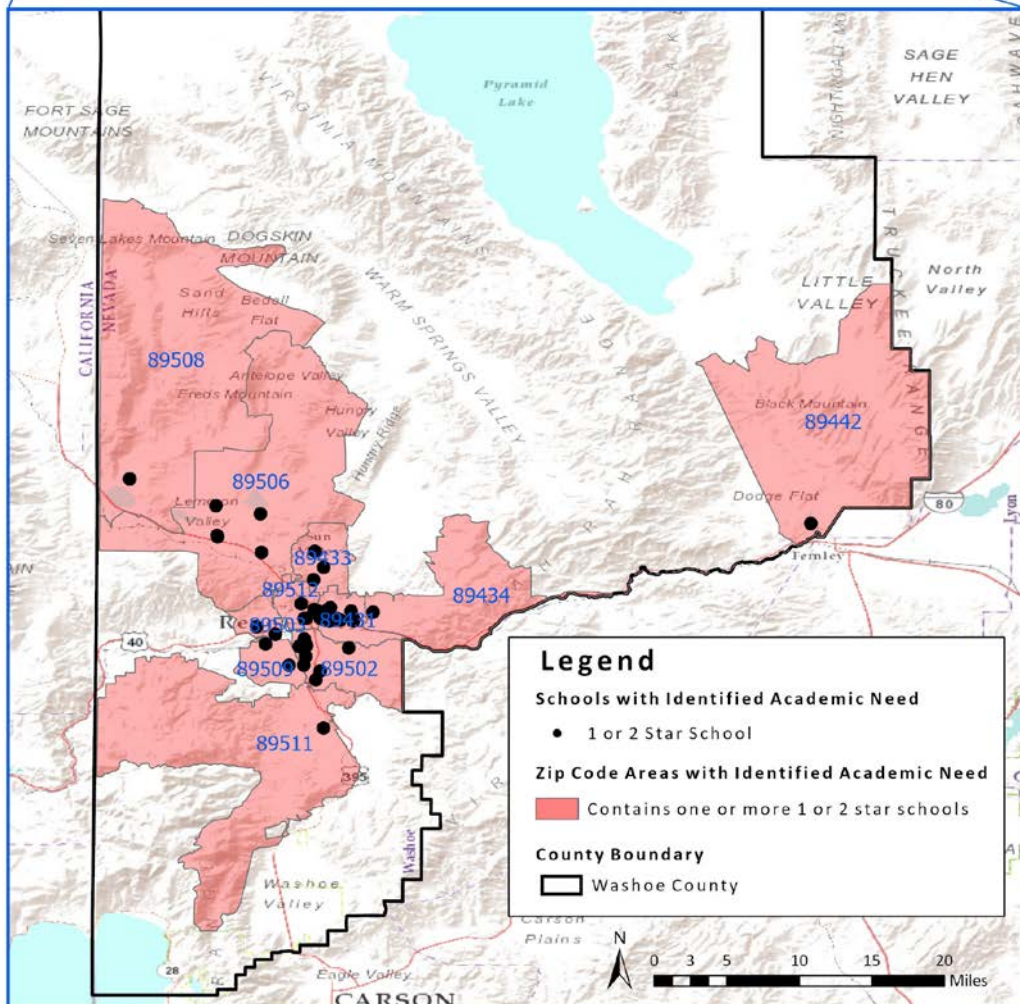
### Analysis of Zip Codes with 1- and 2-Star Schools

#### Summary

- The Washoe County School District serves approximately 66,318 students in 120 schools across 19 zip codes; and
- In the district, there are 39 schools rated 1 or 2 stars and they serve 18,363 students, or 27.6% of students in the district.



#### Washoe County, Nevada Zip Code Areas with Identified Academic Need



Tables display zip codes and schools based on 2018-19 Nevada School Performance Framework (NSPF) star ratings. Enrollment is as of October 1, 2019.

^In general, elementary schools (ES) serve grades K-5, middle schools (MS) serve grades 6-8, and high schools (HS) serve grades 9-12.

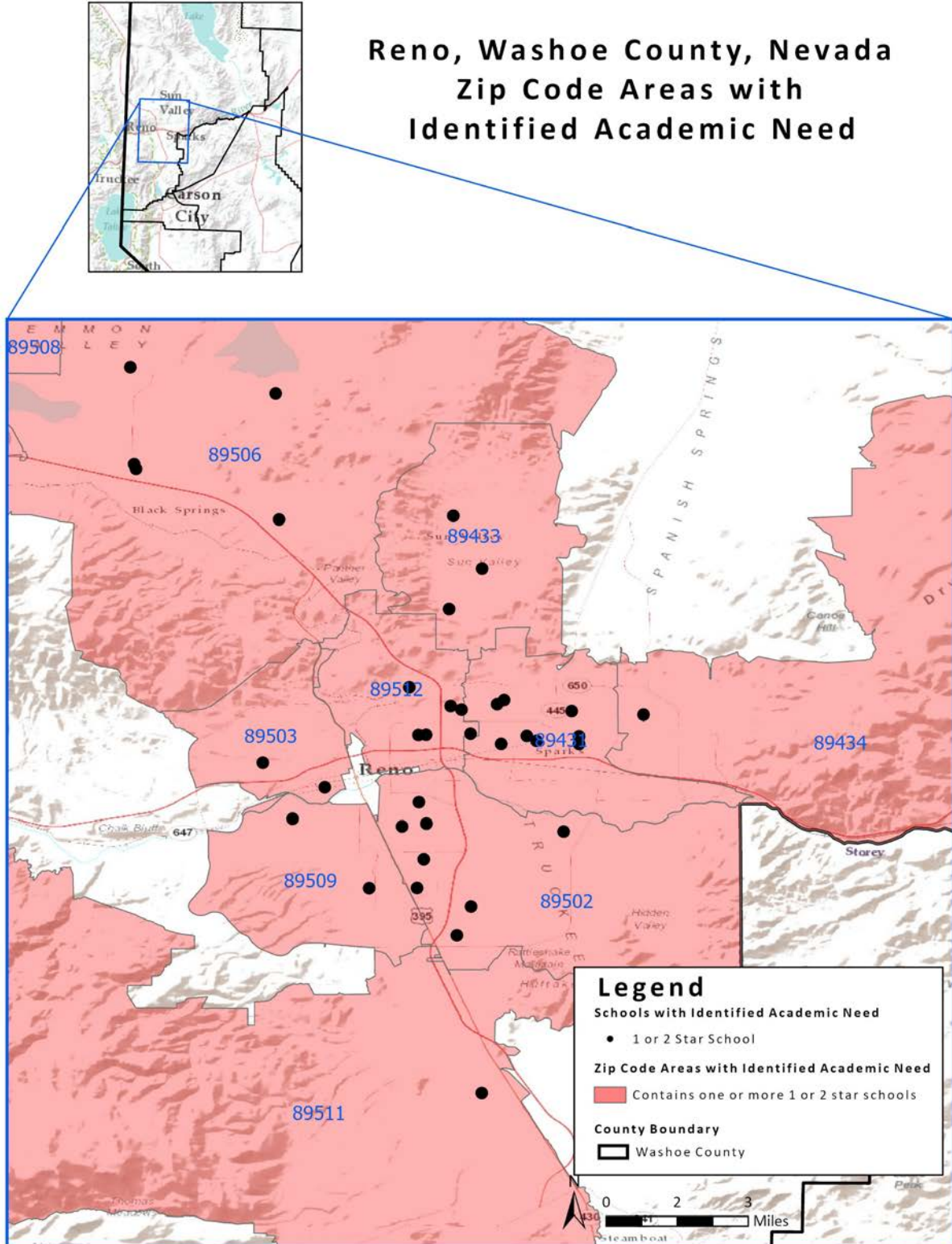
\*Data are suppressed for privacy reasons due to a student population of less than 10.



# District Snapshot

## Washoe County School District

### Analysis of Zip Codes with 1- and 2-Star Schools



Tables display zip codes and schools based on 2018-19 Nevada School Performance Framework (NSPF) star ratings. Enrollment is as of October 1, 2019.

^In general, elementary schools (ES) serve grades K-5, middle schools (MS) serve grades 6-8, and high schools (HS) serve grades 9-12.

\*Data are suppressed for privacy reasons due to a student population of less than 10.

# District Snapshot

## Washoe County School District

### Analysis of Zip Codes with 1- and 2-Star Schools

#### Summary

- The Washoe County School District serves approximately 66,318 students in 120 schools across 19 zip codes; and
- In the district, there are 39 schools rated 1 or 2 stars and they serve 18,363 students, or 27.6% of students in the district.

Zip Codes with 1- and 2-Star Schools								
Zip Code	Total Enrollment	Total # Schools	# 1-2 Star Schools	1-2 Star School Enrollment	% Enrolled in 1-2 Star Schools	# 1-2 Star ES	# 1-2 Star MS	# 1-2 Star HS
89431	5642	11	8	4551	80.6	5	2	1
89433	2849	5	3	1348	47.3	3	0	0
89434	4711	6	1	514	10.9	1	0	0
89442	111	1	1	111	100	1	0	0
89502	8496	21	8	3055	35.9	6	1	1
89503	2163	6	2	412	19.0	1	0	1
89506	6411	9	5	3291	51.3	4	1	0
89508	1609	2	1	608	37.7	1	0	0
89509	4539	11	2	563	12.4	1	0	1
89511	3496	8	2	47	1.3	1	1	0
89512	5555	11	6	3863	69.5	4	1	1

1- and 2-Star Schools								
School Name	Zip Code	Grades Served <sup>^</sup>	18-19 Star Rating	17-18 Star Rating	Enrollment	% EL	% FRL	% IEP
Allen ES	89433	ES	2	2	407	44.2	>95	14.5
Anderson ES	89509	ES	1	1	467	28.3	>95	13.1
Bailey ES	89502	ES	2	2	262	43.5	>95	8.4
Bennett ES	89433	ES	2	2	420	33.3	>95	17.1
Booth ES	89502	ES	1	1	399	22.8	>95	18.1
Cannan ES	89512	ES	2	1	429	32.6	>95	9.6
Desert Heights ES	89506	ES	2	1	447	23.7	>95	25.3
Dilworth MS	89431	MS	2	2	748	16.2	>95	17.7
Duncan ES	89512	ES	2	1	384	50.5	>95	16.9
Dunn ES	89434	ES	2	3	514	15.8	54.5	15.0
Elmcrest ES	89503	ES	2	2	321	18.4	>95	19.0
enCompass HS	89509	HS	1	1	96	13.5	64.6	31.3
Gomes ES	89508	ES	2	2	608	5.8	41.0	13.0
Greenbrae ES	89431	ES	2	2	300	43.0	>95	14.3
High Desert Monte ES	89512	ES	2	2	276	6.2	26.5	12.7
Hug HS	89512	HS	2	2	1551	29.0	>95	15.2
Innovations HS	89503	HS	1	1	91	*	44.0	19.8

Tables display zip codes and schools based on 2018-19 Nevada School Performance Framework (NSPF) star ratings. Enrollment is as of October 1, 2019.

<sup>^</sup>In general, elementary schools (ES) serve grades K-5, middle schools (MS) serve grades 6-8, and high schools (HS) serve grades 9-12.

\*Data are suppressed for privacy reasons due to a student population of less than 10.

# District Snapshot

## Washoe County School District

### Analysis of Zip Codes with 1- and 2-Star Schools

#### Summary

- The Washoe County School District serves approximately 66,318 students in 120 schools across 19 zip codes; and
- In the district, there are 39 schools rated 1 or 2 stars and they serve 18,363 students, or 27.6% of students in the district.

#### 1- and 2-Star Schools (continued)

School Name	Zip Code	Grades Served <sup>^</sup>	18-19 Star Rating	17-18 Star Rating	Enrollment	% EL	% FRL	% IEP
Inspire HS	89502	HS	1	Not Rated	107	14.0	>95	22.4
Lemmon Vly ES	89506	ES	2	3	575	23.3	>95	12.9
Lincoln Park ES	89431	ES	2	2	397	33.0	>95	14.9
Loder ES	89502	ES	2	1	526	52.3	>95	12.0
Mariposa Acad ES	89502	ES	2	2	141	46.1	>95	14.2
Mathews ES	89512	ES	2	1	538	42.8	>95	15.6
Natchez ES	89442	ES	1	1	111	*	>95	19.8
OBrien MS	89506	MS	1	2	844	16.2	57.6	15.3
Picollo Sch ES	89511	ES	1	Not Rated	37	*	>95	>95
Picollo Sch MS	89511	MS	1	Not Rated	10	*	>95	>95
Risley ES	89431	ES	2	3	458	45.4	>95	12.0
Robert Mitchell ES	89431	ES	2	2	389	30.3	>95	15.4
Smith Alice ES	89506	ES	2	2	748	22.6	>95	16.3
Smith Kate ES	89431	ES	2	2	238	50.4	>95	5.5
Smithridge ES	89502	ES	2	2	580	47.4	>95	13.1
Sparks HS	89431	HS	2	3	1233	27.1	60.3	12.9
Sparks MS	89431	MS	2	2	788	29.1	>95	14.6
Stead ES	89506	ES	2	1	677	26.6	>95	14.0
Sun Valley ES	89433	ES	2	2	521	46.6	>95	9.8
Traner MS	89512	MS	2	1	685	28.2	>95	21.2
Vaughn MS	89502	MS	2	1	640	24.5	>95	13.4
Veterans Mem ES	89502	ES	1	2	400	42.0	>95	17.0

Tables display zip codes and schools based on 2018-19 Nevada School Performance Framework (NSPF) star ratings. Enrollment is as of October 1, 2019.

<sup>^</sup>In general, elementary schools (ES) serve grades K-5, middle schools (MS) serve grades 6-8, and high schools (HS) serve grades 9-12.

\*Data are suppressed for privacy reasons due to a student population of less than 10.

## District Snapshot

# White Pine County School District

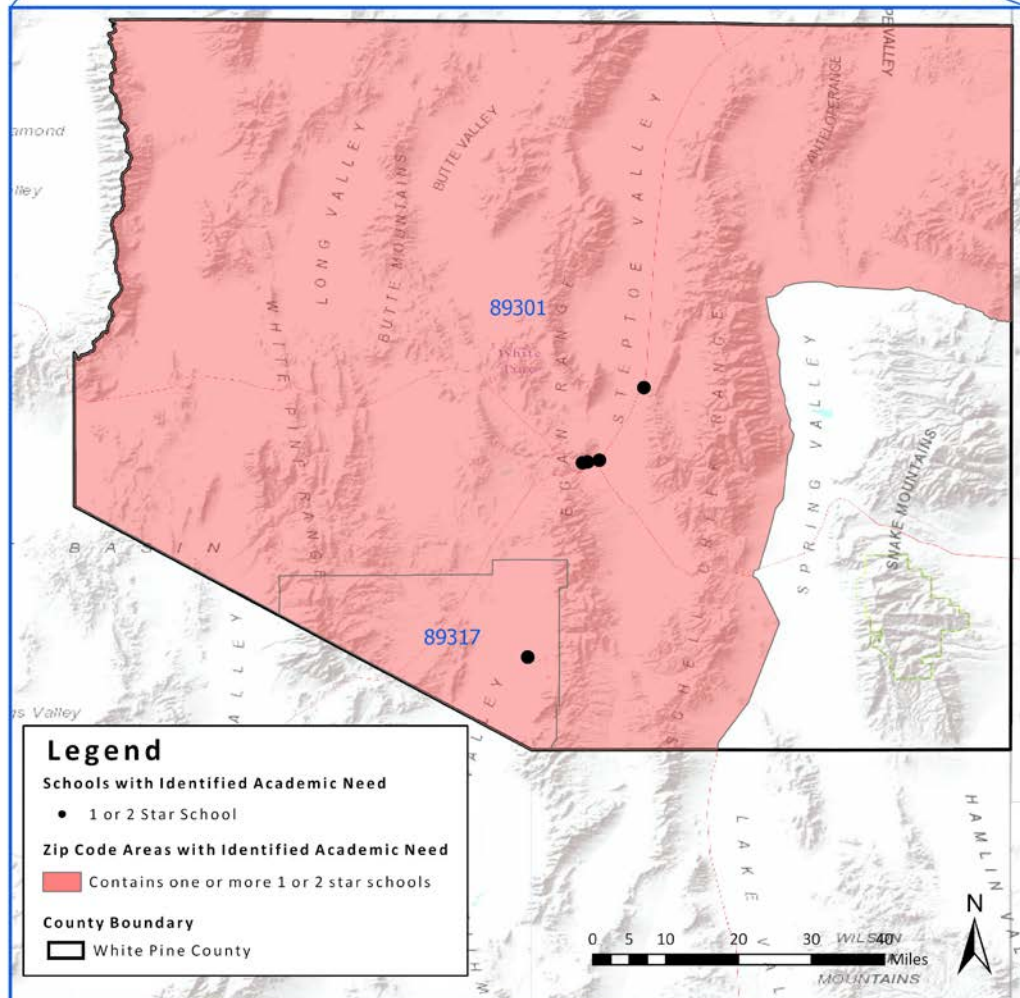
## Analysis of Zip Codes with 1- and 2-Star Schools

### Summary

- The White Pine County School District serves approximately 1,224 students in 9 schools across 4 zip codes; and
- In the district, there are 7 schools rated 1 or 2 stars and they serve 838 students, or 68.4% of students in the district.



### White Pine County, Nevada Zip Code Areas with Identified Academic Need



Tables display zip codes and schools based on 2018-19 Nevada School Performance Framework (NSPF) star ratings. Enrollment is as of October 1, 2019.

^In general, elementary schools (ES) serve grades K-5, middle schools (MS) serve grades 6-8, and high schools (HS) serve grades 9-12.

\*Data are suppressed for privacy reasons due to a student population of less than 10.

# District Snapshot

## White Pine County School District

### Analysis of Zip Codes with 1- and 2-Star Schools

#### Summary

- The White Pine County School District serves approximately 1,224 students in 9 schools across 4 zip codes; and
- In the district, there are 7 schools rated 1 or 2 stars and they serve 838 students, or 68.4% of students in the district.

**Zip Codes with 1- and 2-Star Schools**

Zip Code	Total Enrollment	Total # Schools	# 1-2 Star Schools	1-2 Star School Enrollment	% Enrolled in 1-2 Star Schools	# 1-2 Star ES	# 1-2 Star MS	# 1-2 Star HS
89301	1013	4	3	641	63.2	1	1	1
89317	87	3	3	87	100.0	1	1	1
89318	110	1	1	110	100.0	1	0	0

**1- and 2-Star Schools**

School Name	Zip Code	Grades Served <sup>^</sup>	18-19 Star Rating	17-18 Star Rating	Enrollment	% EL	% FRL	% IEP
Lund ES	89317	ES	1	2	50	*	*	*
Lund HS	89317	HS	1	1	15	*	*	*
Lund MS	89317	MS	1	5	22	*	*	*
McGill ES	89318	ES	2	2	110	*	60.0	15.4
Norman ES	89301	ES	1	1	372	*	51.3	16.6
Stephoe Vly HS	89301	HS	1	1	19	*	68.4	*
White Pine MS	89301	MS	2	3	250	*	54.4	16.0

Tables display zip codes and schools based on 2018-19 Nevada School Performance Framework (NSPF) star ratings. Enrollment is as of October 1, 2019.

<sup>^</sup>In general, elementary schools (ES) serve grades K-5, middle schools (MS) serve grades 6-8, and high schools (HS) serve grades 9-12.

\*Data are suppressed for privacy reasons due to a student population of less than 10.



# *Appendix B: Definitions of Star Ratings*

*The following pages include definitions of each star-rating level from the Nevada School Performance Framework.*

*Source: 2019 Nevada School Performance Framework Procedures Manual*

## Elementary and Middle School

Category	Policy Descriptors
★★★★★	Recognizes a <b>superior</b> school that exceeds expectations for all students and subgroups on every indicator category with little or no exception. A five-star school demonstrates superior academic performance and growth with no opportunity gaps. The school does not fail to meet expectations for any group on any indicator. These schools are recognized for distinguished performance.
★★★★	Recognizes a <b>commendable</b> school that has performed well for all students and subgroups. A four-star school demonstrates satisfactory to strong academic performance for all students. Further, the school is successfully promoting academic progress for all student groups as reflected in closing opportunity gaps. The school does not fail to meet expectations for any group on any indicator. A school identified for targeted support and improvement is not eligible to be classified as a four-star school or higher.
★★★	Identifies an <b>adequate</b> school that has met the state’s standard for performance. The all-students group has met expectations for academic achievement or growth. Subgroups meet expectations for academic achievement or growth with little exception; however, no group is far below standard. The school must submit an improvement plan that identifies supports tailored to subgroups and indicators that are below standard. A school identified for comprehensive support and improvement is not eligible to be classified as a three-star school or higher. Schools identified for targeted support and improvement are eligible to be classified as three-star schools.
★★	Identifies a school that has <b>partially met</b> the state’s standard for performance. Students and subgroups often meet expectations for academic performance or growth but may have multiple areas that require improvement. Areas requiring significant improvement are uncommon. The school must submit an improvement plan that identifies supports tailored to subgroups and indicators that are below standard. A two-star school in consecutive years is subject to state intervention. A school identified for targeted support and improvement or comprehensive support and improvement is eligible to be classified as a two-star school.
★	Identifies a school that has <b>not met</b> the state’s standard for performance. Students and subgroups are inconsistent in achieving performance standards. A one-star school has multiple areas that require improvement including an urgent need to address areas that are significantly below standard. The school must submit an improvement plan that identifies supports tailored to subgroups and indicators that are below standard. The school is subject to state interventions.

## High School

Category	Policy Descriptors
★★★★★	Recognizes a <b>superior</b> school that exceeds expectations for all students and subgroups on every indicator category with little or no exception. A five-star school demonstrates superior academic performance and a superior graduation rate. The school does not fail to meet expectations for any group on any indicator. These schools are recognized for distinguished performance.
★★★★	Recognizes a <b>commendable</b> school that has performed well for all students and subgroups. A four-star school demonstrates satisfactory to strong academic performance for all students. Further, the school's graduation rate meets expectations. The school does not fail to meet expectations for any group on any indicator. A school identified for targeted support and improvement is not eligible to be classified as four-star school or higher.
★★★	Identifies an <b>adequate</b> school that has met the state's standard for performance. The all-students group has met expectations for academic achievement. Subgroups meet expectations for academic achievement or show progress with little exception; however, no group is far below standard. The school must submit an improvement plan that identifies supports tailored to subgroups and indicators that are below standard. A school identified for comprehensive support and improvement is not eligible to be classified as a three-star school or higher. A school identified for targeted support and improvement is eligible to be classified as a three-star school.
★★	Identifies a school that has <b>partially met</b> the state's standard for performance. Students and subgroups often meet expectations for academic performance but may have multiple areas that require improvement. Areas requiring significant improvement are uncommon. The school must submit an improvement plan that identifies supports tailored to subgroups and indicators that are below standard. A two-star school in consecutive years is subject to state intervention. A school identified for targeted support and improvement or comprehensive support and improvement is eligible to be classified as a two-star school.
★	Identifies a school that has <b>not met</b> the state's standard for performance. Students and subgroups are inconsistent in achieving performance standards. A one-star school has multiple areas that require improvement including an urgent need to address areas that are significantly below standard. The school must submit an improvement plan that identifies supports tailored to subgroups and indicators that are below standard. The school is subject to state interventions.

# *Appendix C: Stakeholder Engagement*

*The following page provides a summary of stakeholder input into the 2019 Academic and Demographic Needs Assessment.*

Pursuant to AB 462, the State Public Charter School Authority conducted the first iteration of the Academic and Demographic Needs Assessment in collaboration with school districts and the Nevada Department of Education. Below is a summary of engagements with these key stakeholders.

Action	Dates
Initial meeting to discuss parameters for the Needs Assessment	NDE: 5/18/19 CCSD staff: 5/9/19 WCSD staff: 5/9/19
Send "Overview" document for feedback	NDE: 6/5/19 CCSD staff: 6/5/19 WCSD staff: 6/5/19 Rural School District Superintendents: 6/5/19
Meeting or call to discuss "Overview" document	NDE: 6/14/19 CCSD staff: 6/12/19 WCSD staff: 6/13/19 <i>*Meetings were offered to all stakeholders and were scheduled at the request of school districts/department</i>
Send "Preview of Needs Assessment" for feedback	NDE: 6/24/19 CCSD staff: 6/24/19 WCSD staff: 6/24/19
Send "Draft of Needs Assessment" for feedback	NDE: 7/11/19 CCSD staff: 7/11/19 WCSD staff: 7/11/19 Rural School District Superintendents: 7/13/19
Present to Board of Trustees/State Board	NDE: 10/10/19 CCSD: 9/4/19 WCSD: 10/15/19 Nevada Association of School Boards: 9/28/19

The SPCSA convened a working group to support in the development of the Growth Management Plan. Where applicable, feedback from those meetings was incorporated into this version of the Needs Assessment. The Working Group met on the following dates: 10/3/19, 10/14/19, 10/30/19.