



SPCSA

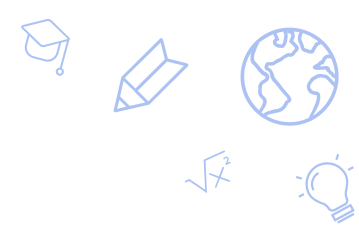
Assessment/Accountability Orientation



Training for Charter School Staff

August 2021





About Us

- The SPCSA Accountability/Assessment team provides high-quality customer service to ensure (1) schools meet federal/state assessment and accountability deadlines and (2) schools submit accurate data. We always aim to be proactive, communicative, honest, friendly, and respectful.



Overview

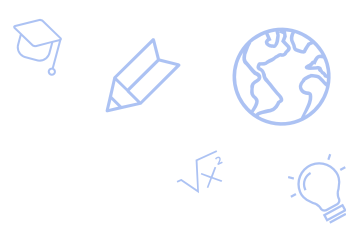
Outcomes

- Enhance knowledge of assessment and accountability in the U.S. and Nevada.
- Gain an understanding of assessment and accountability timelines in Nevada.
- Know where to find and how to use specific tools used in assessment and accountability tasks.

Agenda

- 1) Discuss assessment/accountability in the U.S. and Nevada.
- 2) Review the assessment/accountability calendars for Nevada.
- 3) Outline tools used in tasks.
- 4) Student privacy and communication protocols.

Assessment and Accountability in the U.S.



- The Every Student Succeeds Act (ESSA) is the main federal K-12 education law in the US—it holds schools accountable for how students learn and achieve¹.
- Under ESSA, states must submit plans that address²:
 - Academic standards
 - Annual testing
 - School accountability
 - Goals for academic achievement
 - Plans for supporting and improving struggling schools
 - State and local report cards

¹[20 USC §6311\(c\)\(4\)\(C\)](#).

²See Nevada's plan [here](#).

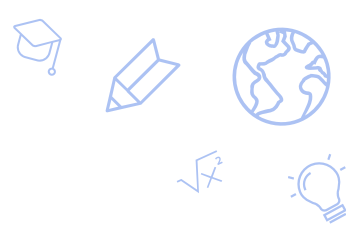
Assessment and Accountability in Nevada



- ESSA, as well as state law (NRS) and regulations (NAC), outline assessment and accountability requirements in NV¹.
- The important items are:
 - Statewide assessments (Smarter, Science, ACT, WIDA, MAP, etc.).
 - Nevada School Performance Framework (NSPF)—annual school star ratings as well as designations of schools needing additional supports.
 - Nevada Report Card—annual collection/reporting of LEA/charter school data.
 - ED Facts—federal education data collections, coordinated by the NDE.
 - Validation Day (October 1)—official student enrollment counts/rates used for various purposes.
 - For SPCSA schools, the SPCSA Performance Frameworks (Academic, Organizational, and Financial).
- Many of these items involve data collections and/or data validations—SPCSA closely coordinates with schools on these tasks.

¹[20 USC §6311\(c\)\(4\)\(C\)](#), [NRS 385A](#), [NAC 390](#).

Assessment and Accountability in Nevada

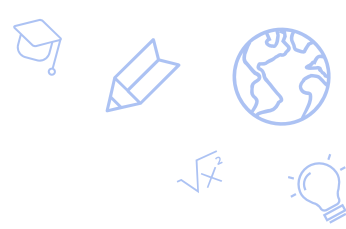


- Statewide assessments¹
 - To comply with ESSA and state law, Nevada requires:

Assessment	Grades	Notes
Smarter Balanced (SBAC): Math, ELA	3-8	All students must assess.
Nevada Alternate Assessment (NAA): Math, ELA, Science	Math/ELA: 3-8 Science: 5, 8, 11	For students with significant cognitive and/or developmental challenges, in lieu of Smarter.
Science	5, 8, and HS	All students must assess; HS can be given in grades 9 or 10.
ACT: Math, ELA	11	All students must assess; participation is grad requirement.
MAP Reading	K-3	All students must assess.
Brigance	PK, K	Developmental screens.
WIDA or WIDA ALT	K-12	For English Learners (ELs) or ELs with significant cognitive and/or developmental challenges.
National Assessment on Educational Progress (NAEP)	4, 8, 12	Select schools.

¹See <http://www.doe.nv.gov/Assessments/> for more information.

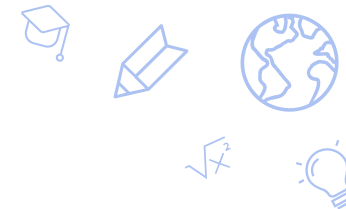
Assessment and Accountability in Nevada



- Statewide assessments (continued) ¹
 - Nevada contracts with vendors for some statewide assessments—examples are Data Recognition Corporation (DRC, for Smarter/Science/NAA), WIDA, and ACT.
 - Sometimes schools must contract directly with a vendor (NWEA for MAP).
 - School districts and charters assess students and validate student demographics during testing windows.
 - The NDE offers annual assessment and test security trainings—SPCSA provides that information when available.

¹See <http://www.doe.nv.gov/Assessments/> for more information.

Assessment and Accountability in Nevada



- Nevada School Performance Framework (NSPF) star ratings¹
 - Per ESSA, all states must rate all public schools.
 - Under the NSPF, each public school is issued an annual index score and star rating based on that school's performance on various measures over the prior school year.
 - ESSA requires states to use their rating systems to identify schools needing additional supports; these designations may result in star rating penalties, improvement plans, etc.

Elementary school rating system (K-5)

INDICATOR/MEASURES	POINTS
Academic Achievement Indicator	25
Pooled Proficiency Measure	20
Read-by-Grade-3 Measure	5
Growth Indicator	35
Math Median Growth Percentile (MGP) Measure	10
ELA MGP Measure	10
Math Adequate Growth Percentile (AGP) Measure	7.5
ELA AGP Measure	7.5
English Language Proficiency Indicator	10
WIDA AGP Measure	10
Closing Opportunity Gaps Indicator	20
Math Closing Opportunity Gaps Measure	10
ELA Closing Opportunity Gaps Measure	10
Student Engagement Indicator	10
Chronic Absenteeism Measure	10

Middle school rating system (Gr 6-8)

INDICATOR/MEASURES	POINTS
Academic Achievement Indicator	25
Pooled Proficiency Measure	25
Growth Indicator	30
Math Median Growth Percentile (MGP) Measure	10
ELA MGP Measure	10
Math Adequate Growth Percentile (AGP) Measure	5
ELA AGP Measure	5
English Language Proficiency Indicator	10
WIDA AGP Measure	10
Closing Opportunity Gaps Indicator	20
Math Closing Opportunity Gaps Measure	10
ELA Closing Opportunity Gaps Measure	10
Student Engagement Indicator	15
Chronic Absenteeism Measure	10
Academic Learning Plans Measure	2
8 th Grade Credit Requirements (NAC 389) Measure	3

High school rating system (Gr 9-12)

INDICATOR/MEASURES	POINTS
Academic Achievement Indicator	25
Math Proficiency Measure	10
ELA Proficiency Measure	10
Science Proficiency Measure	5
Graduation Rates Indicator	30
4-year ACGR Measure	25
5-year ACGR Measure	5
English Language Proficiency Indicator	10
WIDA AGP Measure	10
College and Career Readiness Indicator	25
Post-Secondary Preparation Participation Measure	10
Post-Secondary Preparation Completion Measure	10
Advanced/CCR Diploma Measure	5
Student Engagement Indicator	10
Chronic Absenteeism Measure	5
9 th Grade Credit Sufficiency Measure	5

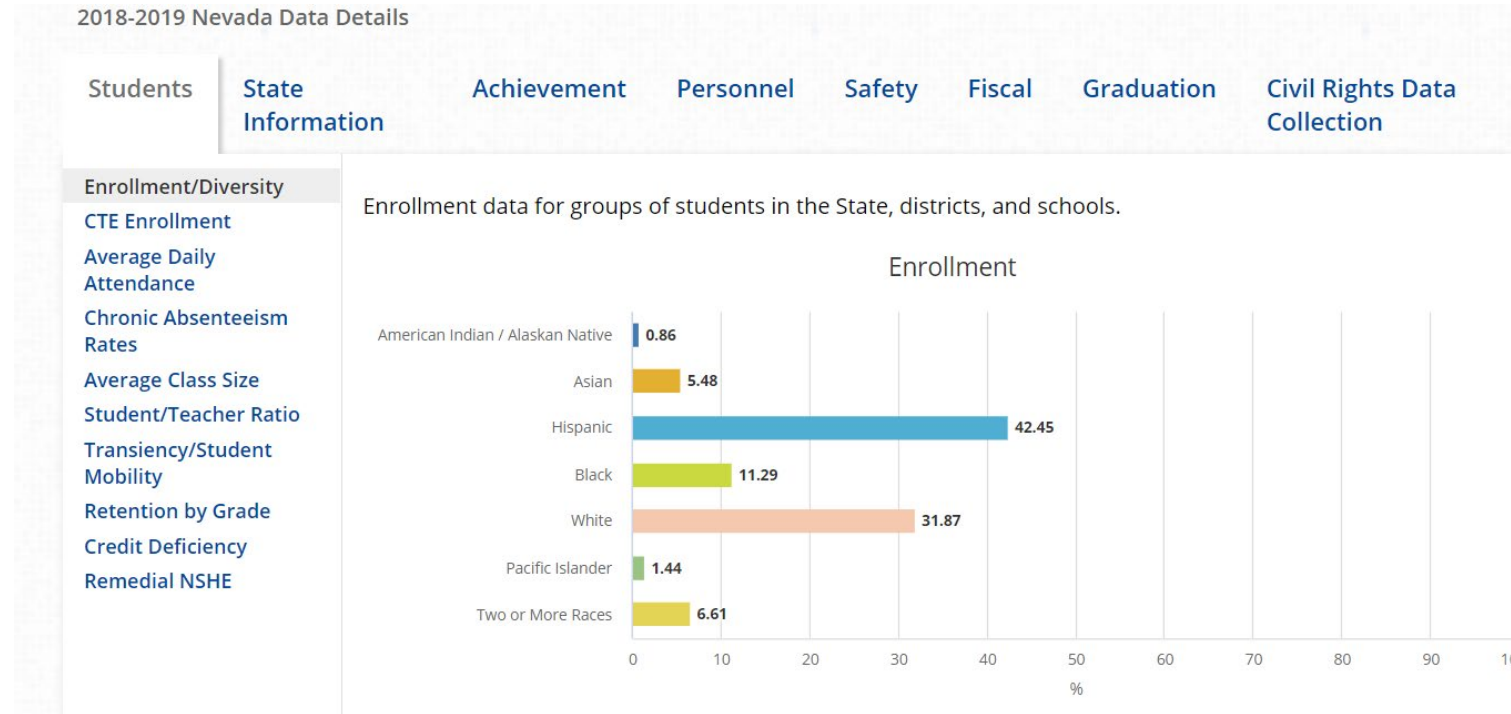
¹See <http://nevadareportcard.nv.gov/di/> and the NDE [NSPF Technical Manual](#) for more information.

Assessment and Accountability in Nevada



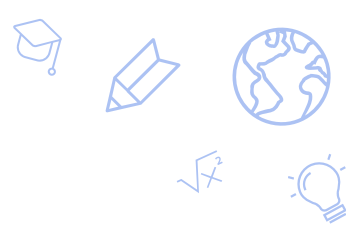
- Nevada Report Card¹

- To comply with ESSA and state law, NDE collects and reports on various data from LEAs and charter schools, such as: demographics, average daily attendance, dropout rates, student/teacher ratios, fiscal information, etc.



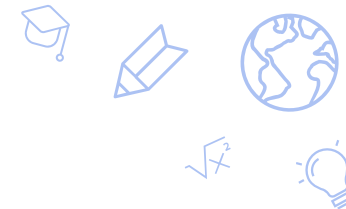
¹See the [Nevada Accountability Portal](#) for NV Report Card data such as that above.

Assessment and Accountability in Nevada

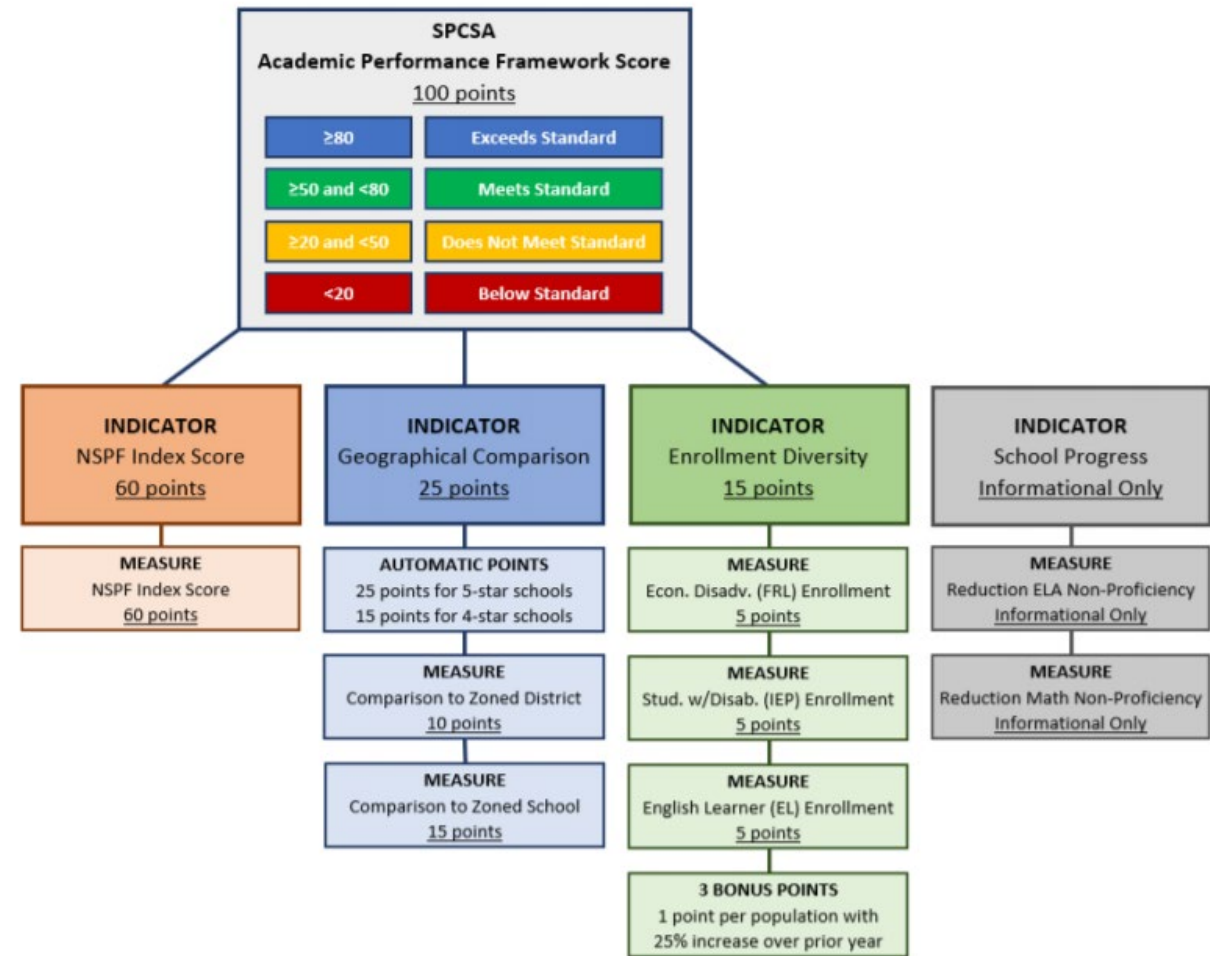


- ED Facts
 - ED Facts is a U.S. Department of Education initiative that collects, analyzes, and promotes the use of high-quality, pre-kindergarten through grade 12 data.
 - The NDE collects data for ED Facts from charter schools via the SPCSA.
- Validation Day
 - On October 1 of each year, the NDE performs a student enrollment count; these are the official student counts and enrollment rates used by the NDE and the SPCSA for reporting, certain funding, etc.
 - Charter schools are responsible for validating their student data during the validation day window (typically mid-September to mid-October). The SPCSA provides guidance and helps in this process.

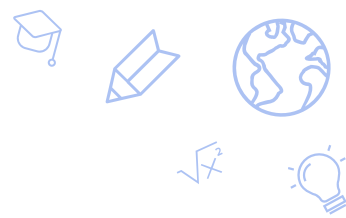
Assessment and Accountability in Nevada



- SPCSA Performance Frameworks¹
 - State law requires the SPCSA to maintain Academic, Financial, and Organizational Performance Framework ratings for SPCSA schools.
 - The Assessment/Accountability team maintains the Academic Performance Framework, which is similar to the NSPF; see diagram at right.
 - For info on the Financial and/or Organization Frameworks see the link below.
 - These Frameworks provide one data point—amongst many others—that are used in authorizing decisions.



¹The [Accountability section](#) of the SPCSA website provides more information on the performance frameworks.



Agenda

- 1) Discuss assessment/accountability in the U.S. and Nevada.
- 2) Review the assessment/accountability calendars for Nevada.**
- 3) Outline tools used in tasks.
- 4) Student privacy and communication protocols.

Nevada Assessment Calendar



Nevada Department of Education Accountability Assessment Calendar for the 2020-2021 School Year

Student Assessments – All Students	Grades	Testing Windows
Smarter Balanced Summative Assessment English Language Arts and Mathematics	3 – 8	February 18 – May 19
Science Assessments	5, 8, and high school	February 18 – May 19
ACT – College & Career Readiness Assessment English, Mathematics, Reading, Science, & Writing	11	<i>Paper/Pencil:</i> February 23; <i>Make-up:</i> March 9 <i>w/Accommodations:</i> February 23-26; March 1-5 <i>Online:</i> February 23-25; March 2-4
Brigance Early Childhood Screen III Intake & Diagnostic Screener for RBG3 Literacy Readiness	Pre-K	<i>2 testing seasons: Fall & Spring</i> No earlier than 15 calendar days prior to the start of school or within 45 instructional days of the start of the school year; AND within the last 30 instructional days or upon student exit.
	K	<i>Intake assessment:</i> No earlier than 15 calendar days prior to the start of school or within 45 instructional days of the start of the school year. <i>Students in COVID-19 Distance Learning:</i> The Brigance cannot be administered online. For those children who are 100% distance learning, the requirement of the Brigance Early Childhood Screen III is waived.
NWEA Measures of Academic Progress (MAP) Growth Reading Map Growth Reading K-2	K	<i>2 Testing Seasons: Winter & Spring:</i> Nov. 16 – Feb. 19; Mar. 8 – May 28
	1	<i>3 Testing Seasons: Fall, Winter, & Spring:</i> Aug. 17 – Oct. 29; Nov. 16 – Feb. 19; Mar. 8 – May 28
	2-3	<i>3 Testing Seasons: Fall, Winter & Spring:</i> Aug. 17 – Oct. 29; Nov. 16 – Feb. 19; Mar. 8 – May 28

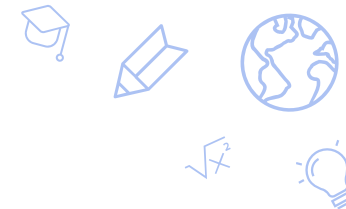
Nevada Assessment Calendar



Nevada Department of Education Accountability Assessment Calendar for the 2020-2021 School Year

Student Assessments – Select Populations	Grades	Testing Windows
NAA – Nevada Alternate Assessment English Language Arts & Mathematics Alternate Assessments	3-8, 11	February 18 – May 19
Science Alternate Assessment	5, 8, 11	February 18 – May 19
WIDA – Students Identified as English Learners English Language Proficiency Assessment in Speaking, Listening, Reading, and Writing	K 1-12	January 4 – February 26 January 19 – February 26
CTE – Career & Technical Education Workplace Readiness Skills & End-of-Program Technical Skills	CTE Program Completers	<i>Fall Testing</i> September 21 – October 26 <i>Winter Testing:</i> October 26 – November 20 Retake December 7 – December 18 <i>Spring Testing:</i> February 16 – March 26 Retake April 12 – April 30
NAEP – National Assessment of Educational Progress Long-Term Trend in Mathematics and Reading	4 and 8 Selected students from selected schools	Principals at schools selected to participate will receive notice to register for NAEP and the assessment date. See the National Assessment Governing Board website for more information.

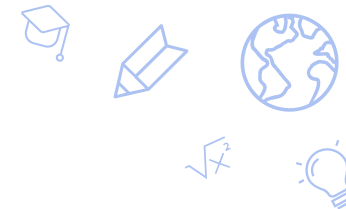
Nevada Accountability Calendar



October, 2020	EdFacts, IDEA Data Submission
	Class of 1920 4-Year Graduation Rate Validation in DVSL ←
November, 2020	ACT Pre-ID to ACT
	Class of 1920 4-Year Graduation Rate Validation in DVSL
	2019-2020 EdFacts IDEA Data Submission
	APF Narrative Collection Begins
	WIDA Pre-ID to WIDA
	NAA Pre-ID to DRC
December, 2020	Publish Final 4-Year Graduation Rate (OYOG 1920 or class of 1920)
	2019-2020 EdFacts Data Submission (Immigrant, EL, Homeless, Assessments CTE, Indicator data)
	APF Narrative Collection Closes
January, 2021	WIDA Testing Begins ←
	Smarter and Science Pre-IDs (ES, MS, & HS) to DRC
	2019-2020 EdFacts Data Submission (Directory, Grades offered, Charter data)
February, 2021	Smarter, Science, and NAA Testing Begins Feb. 18 ←
	Smarter, Science, NAA eDirect Validation Begins
	WIDA Testing Continued
	2019-2020 EdFacts ESEA Data Submission
	2019-2020 EdFacts Data Submission (GFSA, Cohort, Migrant, Neglected & Delinquent)
	Class of 1920 5-Year Graduation Rate Validation in DVSL Begins ←
	ACT Testing Feb. 23 ←
	WIDA Testing Ends Feb. 26

Don't worry—SPCSA will send a lot of reminders!

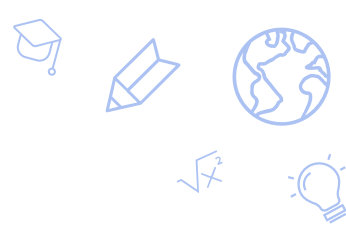
Nevada Accountability Calendar



March, 2021	ACT Make-Up Testing Mar. 9
	EL Membership Count Pulled for WIDA Participation
	Smarter, Science, and NAA Testing Continues ←
	Smarter, Science, and NAA eDirect Validation Continues
	Class of 1920 5-Year Graduation Rate Validation in DVSL Ends
	5-Year Graduation Rate Published (OYOG 1819 1920)
	Phase I Nevada Report Card Data Collection in EDSA Begins late Mar. ←
	2019-2020 EdFacts Data Submission (FRL, Membership, CCD)
	WIDA Pre-Reporting Validation in AMS Begins Mar. 25 ←
April, 2021	WIDA Pre-Reporting Validation in AMS Continues to Apr. 13
	Smarter, Science, and NAA Testing Continues
	Smarter, Science, and NAA eDirect Validation Continues
	APF School Application Window Begins
	Phase I Nevada Report Card Data Collection in EDSA Continues
	6-Year Graduation Rate Validation in DVSL Begins Late April
May, 2021	Smarter, Science, and NAA Testing Continues to May 19 ←
	Smarter, Science, and NAA eDirect Validation Open Until May 27 ←
	Phase II Nevada Report Card Data Collection in EDSA ←
	WIDA Post-Reporting Validation in COS-SD May 20-27
	APF Spring Data Collection Begins
June, 2021	NSPF Data Collection Begins (CCR, Chronic Absenteeism, Credits, ALPs) ←
	Phase II Nevada Report Card Data Collection through EDSA Continues ←
	APF School Applications Due June 1
	Preliminary Smarter, NAA, ACT participation data posted to LEAs for review
	APF Spring Data Collection Due June 30
	NSPF Data Collection Due June 30 (Chronic Absenteeism, Credits, ALPs)

Don't worry—SPCSA will send a lot of reminders!

Nevada Accountability Calendar



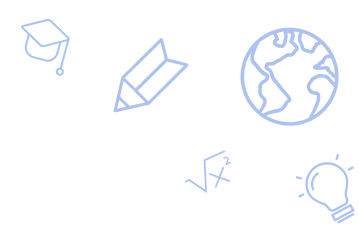
July, 2021	ACT Data Validation in DVSL ←
	NSPF Data Collection Due July 15 (CCR)
	Nevada Report Card Collection of District/School Logo, Headings, and Narratives
	Accountability Data Files Posted to LEAs (Smarter, Smarter Growth, WIDA Growth, NAA, Science, ACT)--mid to late July ←
August, 2021	Preliminary NSPF Ratings Posted to LEAs for Review ←
	Preliminary School Designations (CSI, TSI, ATSI) Posted to LEAs for Review
September, 2021	NSPF and School Designations Published on Nevada Report Card ←
	Publish APF Reports with NSPF
	Publish Nevada Report Card ←

Don't worry—SPCSA will send a lot of reminders!



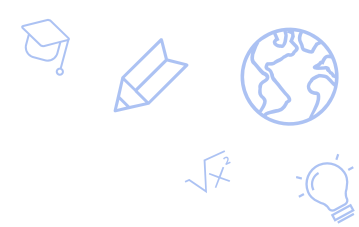
Agenda

- 1) Discuss assessment/accountability in the U.S. and Nevada.
- 2) Review the assessment/accountability calendars for Nevada.
- 3) Outline tools used in tasks.**
- 4) Student privacy and communication protocols.



Tools/Websites/Applications

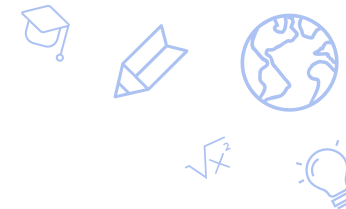
- Assessment management/training websites
 - [DRC INSIGHT](#)
 - Manage Smarter/Science/NAA assessments, such as test tickets, student info, validations, etc.
 - [DRC/WIDA AMS](#)
 - Manage WIDA assessments, such as test tickets, student info, validations, etc.
 - [WIDA Training Portal](#)
 - Find various required WIDA trainings.
- SPCSA manages accounts on these websites; please contact us if school staff need access.



Tools/Websites/Applications

- NDE tools
 - [Nevada Accountability Portal](#)
 - Report Card data, such as enrollment rates to assessment proficiency to graduation rates to dropout rates, etc.
 - NSPF star ratings data.
 - [Bighorn Portal](#)
 - NDE's secure file transfer portal, also an access point to other tools.
 - [Data Validation Sign and Lock \(DVSL\)](#) tool
 - Access through Bighorn, for validating certain data like assessments, validation day, grad rates.
 - [FreshDesk](#)
 - Submit support tickets to NDE for certain items like Infinite Campus or Bighorn issues, enrollment codes, general data help, etc.

Tools/Websites/Applications



- Bighorn—each school has an Accountability and Assessment folder, drag and drop files you want to transfer to SPCSA, then let us know.

Nevada Department of Education
Nevada Ready!

Bighorn Applications CTE **Files**

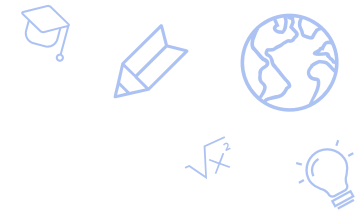
101 Nevada Rise ▸ Accountability and Assessment ⓘ

Documents
New Document Library
Recent
Site Content

- CTE Documents
- Fiscal Reporting
- Resources
- State Charter School Docume
- 101 Nevada Rise
 - Accountability and Asses**
 - 1920 Final Report Card
- SPED
- SPP
 - Student Reconciliation
- 102 Nevada Prep
- 103 NSHS II Sunrise
- 104 NSHS III Meadowood
- 105 Signature Prep

Name	Modified	Modified By	File Size
[Redacted]			33 KB
[Redacted]			46 KB
[Redacted]			28 KB
[Redacted]			166 KB
[Redacted]			49 KB
[Redacted]			17 KB
[Redacted]			137 KB
[Redacted]			29 KB
[Redacted]			21 KB

Drag files here to upload

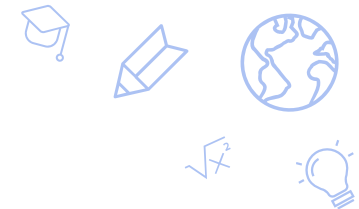


Tools/Websites/Applications

- Bighorn—access DVSL via Applications link

The screenshot shows a OneDrive interface for a user named 'Bighorn'. The breadcrumb path is 'Bighorn > Applications > CTE > Files'. The current folder is '101 Nevada Rise > Accountability and Assessment'. A dropdown menu is open under 'Applications', listing 'DVSL Application', 'EDS Application', and 'Growth Model Site'. The 'DVSL Application' item is highlighted with a red box. Below the breadcrumb, there are action buttons: '+ New', 'Upload', 'Sync', 'Share', and 'More'. A search bar contains the text 'Find a file'. On the left sidebar, there are sections for 'Documents', 'New Document Library', 'Recent', and 'Site Content'. Under 'Site Content', there are folders for 'CTE Documents', 'Fiscal Reporting', 'Resources', 'State Charter School Documents', '101 Nevada Rise', and 'Accountability and Assessment'.

✓	📄	Name	Modifie
	📁	1920 Final Report Cards	... Octob
	📄	19-20 Chronic Absenteeism NVRise	... Decen
	📄	20-21 Chronic Absenteeism NV Rise	... June 2
	📄	20-21_ReportCard_PhaseI_Template_NV Rise	... April 2
	📄	20-21_ReportCard_PhaseII and III_Template_NVRise	... June 2



Tools/Websites/Applications

- FreshDesk

sainsupport.freshdesk.com/support/tickets/new ...

Nevada Department of Education

Home Solutions

Submit a ticket

District *

Location of Software or Hardware Support Needed

Requester *

Subject *

Issue *

Priority Low

Description *

Ask a general question

Bighorn User Access

Bighorn Technical Support

Data Requests

Data Validation

IC Adhoc Reporting

IC Technical Support

Program Question SPED

Program Question Assessment

Program Question Fiscal

Record Modification

Required Practice

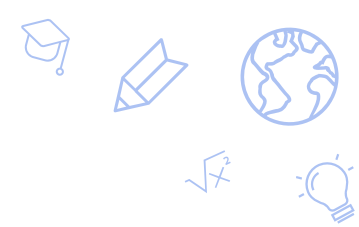
Student Combine/Split

Other

Hardware or Software Support Needed

...

B I U [List Icon] [List Icon] [Link Icon] [Image Icon] [Link Icon] [Image Icon]



Tools/Websites/Applications

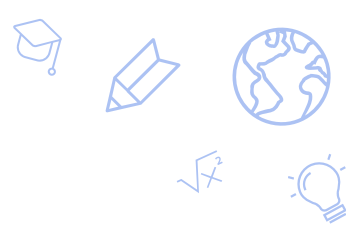
- SPCSA tools
 - [Epicenter](#)
 - Submit various requirements to SPCSA, including tasks related to assessment and accountability such as:
 - Testing calendar.
 - Test security plan.
 - Various certifications and forms related to state assessments, test security, and assessment training.
 - Certifications stating school has provided and validated data for validation day, NSPF, and Report Card.
- Other tools
 - [Infinite Campus Community](#)
 - Find documentation/help related to IC.
 - Submit support tickets to Infinite Campus.



Agenda

- 1) Discuss assessment/accountability in the U.S. and Nevada.
- 2) Review the assessment/accountability calendars for Nevada.
- 3) Outline tools used in tasks.
- 4) **Student privacy and communication protocols.**

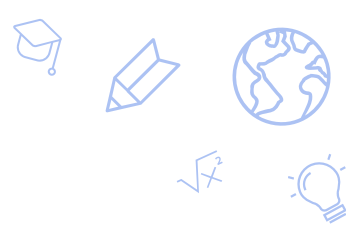
Student Privacy and FERPA



- FERPA, the federal educational data privacy law, is VERY important to the SPCSA and the NDE Assessment/Accountability teams.
- Throughout the year, we all will frequently work with student-level data that contains personally identifiable information (PII), which must be protected per FERPA.
- Therefore, never email us items such as student-level data files, student IDs, names, etc. as it may result in the accidental disclosure of PII. Use Bighorn to transfer student-level data or if you need to communicate about a specific student(s), please call.

Note that the SPCSA plans to hold FERPA-specific trainings for schools during the 21-22 SY.

Communication Protocols

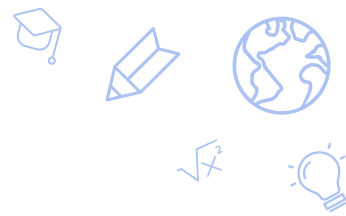


- The NDE Assessment/Accountability teams prefer SPCSA schools contact SPCSA staff and not NDE with questions. They also prefer SPCSA staff pass along communications to SPCSA schools.
- Therefore, please contact SPCSA and not NDE with questions; frequently we can answer a question or resolve an issue faster than them. If we don't know the answer, we can find out.
 - Exception: If submitting a support ticket to FreshDesk for, say, Bighorn issues or access, there is no need to contact us first.
 - If uncertain who to contact, feel free to email/call us!

How we at the SPCSA interact with schools



- The SPCSA Assessment/Accountability team provides high-quality customer service to ensure (1) schools meet federal/state assessment and accountability deadlines and (2) schools submit accurate data. We always aim to be proactive, communicative, honest, friendly, and respectful.
- We frequently:
 - Hold technical assistance (TA) calls to provide guidance on ongoing/upcoming tasks.
 - Provide trainings on items such as the NSPF, Report Card, FERPA, etc.
 - Email/call school staff with reminders and follow-ups.
 - Send communications of interest, such as vendor or NDE trainings, NDE memos, etc.
- Upon request, SPCSA can incorporate specific topics into training and/or TA calls.
- Please keep your assessment/accountability staff contact information updated in Epicenter.



Outcomes

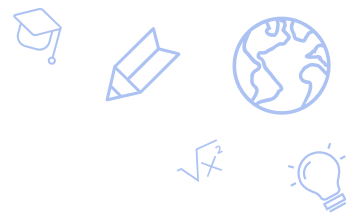
- One should now...
 - Have enhanced their knowledge of assessment and accountability in the U.S. and Nevada.
 - Gained an understanding of assessment and accountability timelines in Nevada.
 - Know where to find and how to use specific tools that may be used in assessment and accountability tasks.



Thank you!

charterschools.nv.gov





Contact Info

- SPCSA Assessment/Accountability staff
 - Selcuk Ozdemir: selcuk@spsca.nv.gov
 - Brandon Gaytán: brandongaytan@spsca.nv.gov
 - Pat Malloy: pat.malloy@spsca.nv.gov