

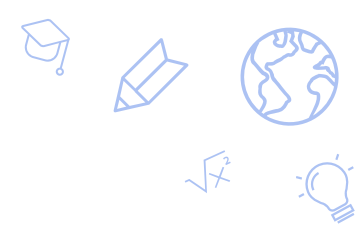


Nevada School Performance Framework

Overview of the Annual Nevada School Star Ratings

Training for Charter School Staff

August 2021



About Us

- The SPCSA Accountability/Assessment team provides high-quality customer service to ensure (1) schools meet federal/state assessment and accountability deadlines and (2) schools submit accurate data. We always aim to be proactive, communicative, honest, friendly, and respectful.



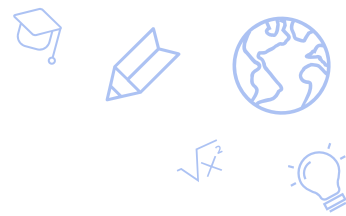
Overview

Outcomes

- Gain a high-level understanding of the NSPF, including:
 - Its purpose.
 - The performance it measures.
- Know how to interpret an NSPF star rating report.
- Know where to find additional information on the NSPF, if needed.

Agenda

- 1) Purpose/History of the NSPF
- 2) NSPF Overview
- 3) NSPF Indicators and Measures
- 4) NSPF Reports
- 5) Resources

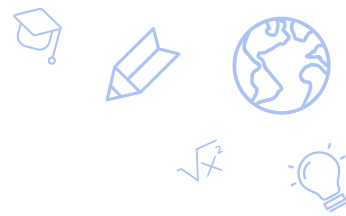


Purpose of the NSPF

- The federal Every Student Succeeds Act (ESSA) requires states to use an accountability system to annually rate all public schools within that state. Nevada statute is aligned with this requirement.¹
- State accountability systems serve many purposes²:
 - Specify performance targets and incentivize actions that lead to improved student outcomes.
 - Deliver timely information to schools, the public, and other stakeholders on the quality of education being provided.
 - Encourage all schools to continually reflect on and improve the quality of education being provided to students and student groups.
 - Identify underperforming schools so targeted resources may be provided.

¹[20 USC §6311\(c\)\(4\)\(C\)](#) and [NRS 385A.600 to 385A.720, inclusive](#).

²Council of Chief State School Officers (CCSSO) report "[Improving Outcomes for Students](#)".



History of the NSPF

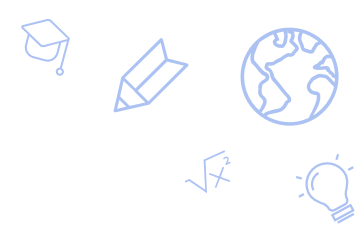
- To fulfill the requirements under ESSA, the Nevada Department of Education (NDE) created the Nevada School Performance Framework (NSPF).
- The current iteration of the NSPF is the result of years of past and ongoing engagement of diverse stakeholders, which has produced an accountability system that reflects Nevada values.¹

¹For additional history, see the [NSPF section](#) of the NDE website.



Agenda

- 1) Purpose/History of the NSPF
- 2) NSPF Overview**
- 3) NSPF Indicators and Measures
- 4) NSPF Reports
- 5) Resources



NSPF Basics

- Under the NSPF, each public school is issued an annual index score and star rating based on that school’s performance on various measures over the prior school year.
 - Ratings are issued by the NDE around September 15, for the prior school year.

Elementary School

Star Rating	Score Range
★	> 0 and < 27
★★	≥ 27 and < 50
★★★	≥ 50 and < 67
★★★★	≥ 67 and < 84
★★★★★	≥ 84 and ≤ 100

Middle School

Star Rating	Score Range
★	> 0 and < 29
★★	≥ 29 and < 50
★★★	≥ 50 and < 70
★★★★	≥ 70 and < 80
★★★★★	≥ 80 and ≤ 100

High School

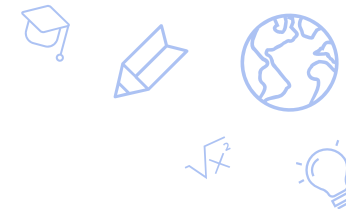
Star Rating	Score Range
★	> 0 and < 27
★★	≥ 27 and < 50
★★★	≥ 50 and < 70
★★★★	≥ 70 and < 82
★★★★★	≥ 82 and ≤ 100

NSPF Basics: Earning Points and a Star Rating

- The NSPF has various measures categorized under indicators. These measures and indicators are specific to the elementary, middle, and high school levels.
- A school earns points in the NSPF based on their performance in the measures.
- Points for measures are totaled under their indicators, and indicators are then summed into an index score from 1 to 100.
- The index score is then tied to a star rating from 1 to 5.



NSPF Basics: Multiple Ratings Per School



- Because measures and indicators are specific to the elementary, middle, and high school level, a school or campus that is K-8 receives two separate ratings, one for the elementary (K-5) and one for the middle (6-8).

Pinecrest Academy St Rose

School Y

School Level: Elementary School
Grade Levels: 0K-08

District: State Public Charter School Authority
School: 1385 E. Cactus Ave.
Address: Las Vegas, NV 89183



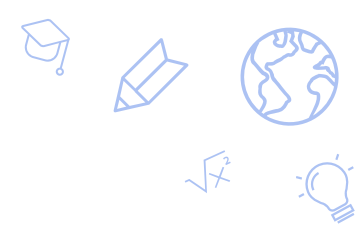
Pinecrest Academy St Rose

School Y

School Level: Middle School
Grade Levels: 0K-08

District: State Public Charter School Authority
School: 1385 E. Cactus Ave.
Address: Las Vegas, NV 89183





NSPF Basics: Validating Data

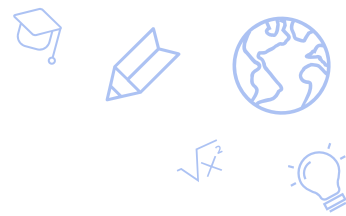
- Throughout the year, SPCSA schools are responsible for validating and/or submitting data used in their NSPF star rating including but not limited to:
 - Assessment data
 - Graduation rates
 - Chronic absenteeism
- Before NSPF ratings are published, the NDE provides preliminary data for review. If larger-scale issues are found by an LEA or charter school, those may be addressed.
- Therefore, LEAs and charter schools have ample opportunities to correct issues and ensure their data/rating(s) are accurate.

NSPF Basics: Students Counted in Rating



- Federal law indicates students that have not attended a school for at least half of the school year cannot be counted in that school's rating, with a few exceptions.¹
 - This provision ensures only students with sufficient instructional time at a school are counted toward that school's rating.
- The NDE uses "Year in School" (YIS) to include or exclude students in a school's rating.
 - YIS=Yes (or 1) means the student is counted in the school's rating.
 - Generally, YIS=Yes if a student has been enrolled at that school at least one half of the school year.
 - LEAs and charter schools are responsible for adding/validating YIS during data validation processes to ensure the correct students count in their rating.

¹[20 USC §6311\(c\)\(4\)\(F\)](#).



NSPF Basics: Underperforming Schools

- The NSPF helps the NDE identify and support:
 - Low-performing schools
 - Schools with consistently underperforming student groups
 - Schools with very low performing student groups
- If a school falls into one of the above categories, it may receive a designation as such:
 - Comprehensive Support and Improvement (CSI, low-performing school)
 - Targeted Support and Improvement (TSI, consistently underperforming student groups)
 - Additional Targeted Support and Improvement (ATSI, very low performing student groups)
- A designation can result in a star rating penalty (for example, a high performing school identified as TSI can be capped at 3 stars).
- A designation may result in additional funding that may be dependent upon written plans to address the underlying issues.

NSPF Basics: Impacts on SPCSA Schools



- The NSPF provides one data point—amongst many others—that inform future SPCSA authorizing decisions.
- Poor academic performance and/or an NSPF rating below 3 stars for an SPCSA school may be of higher consequence than that for a local district school.
 - Permissive termination¹
 - High schools – graduation rate under 60 percent for the immediately preceding school year.
 - Elementary and middle schools – lowest 5 percent statewide for the immediately preceding school year.
 - Elementary, middle, and high schools – receives a 1- or 2-star rating for the last three ratings.
 - Mandatory termination²
 - Three 1-star ratings in any five-year period.
 - Poor academic performance may result in an SPCSA notice of concern or, in more egregious cases, a notice of breach.¹
 - The school is responsible for correcting unsatisfactory performance; notices may require additional communication/monitoring/reporting, and/or that the school develop a corrective action plan.

¹[NRS 388A.330](#) and [NAC 388A.350](#).

²[NRS 388A.300](#).

³See the SPCSA [Charter School Performance Framework](#) document.



Agenda

- 1) Purpose/History of the NSPF
- 2) NSPF Overview
- 3) NSPF Indicators and Measures**
- 4) NSPF Reports
- 5) Resources

NSPF Indicators and Measures



Elementary

INDICATOR/MEASURES	POINTS
Academic Achievement Indicator	25
Pooled Proficiency Measure	20
Read-by-Grade-3 Measure	5
Growth Indicator	35
Math Median Growth Percentile (MGP) Measure	10
ELA MGP Measure	10
Math Adequate Growth Percentile (AGP) Measure	7.5
ELA AGP Measure	7.5
English Language Proficiency Indicator	10
WIDA AGP Measure	10
Closing Opportunity Gaps Indicator	20
Math Closing Opportunity Gaps Measure	10
ELA Closing Opportunity Gaps Measure	10
Student Engagement Indicator	10
Chronic Absenteeism Measure	10

Middle

INDICATOR/MEASURES	POINTS
Academic Achievement Indicator	25
Pooled Proficiency Measure	25
Growth Indicator	30
Math Median Growth Percentile (MGP) Measure	10
ELA MGP Measure	10
Math Adequate Growth Percentile (AGP) Measure	5
ELA AGP Measure	5
English Language Proficiency Indicator	10
WIDA AGP Measure	10
Closing Opportunity Gaps Indicator	20
Math Closing Opportunity Gaps Measure	10
ELA Closing Opportunity Gaps Measure	10
Student Engagement Indicator	15
Chronic Absenteeism Measure	10
Academic Learning Plans Measure	2
8 th Grade Credit Requirements (NAC 389) Measure	3

High

INDICATOR/MEASURES	POINTS
Academic Achievement Indicator	25
Math Proficiency Measure	10
ELA Proficiency Measure	10
Science Proficiency Measure	5
Graduation Rates Indicator	30
4-year ACGR Measure	25
5-year ACGR Measure	5
English Language Proficiency Indicator	10
WIDA AGP Measure	10
College and Career Readiness Indicator	25
Post-Secondary Preparation Participation Measure	10
Post-Secondary Preparation Completion Measure	10
Advanced/CCR Diploma Measure	5
Student Engagement Indicator	10
Chronic Absenteeism Measure	5
9 th Grade Credit Sufficiency Measure	5

Elementary School Indicators and Measures



Elementary (grades K-5)

INDICATOR/MEASURES	POINTS
Academic Achievement Indicator	25
Pooled Proficiency Measure	20 ●
Read-by-Grade-3 Measure	5 ●
Growth Indicator	35
Math Median Growth Percentile (MGP) Measure	10
ELA MGP Measure	10
Math Adequate Growth Percentile (AGP) Measure	7.5
ELA AGP Measure	7.5
English Language Proficiency Indicator	10
WIDA AGP Measure	10
Closing Opportunity Gaps Indicator	20
Math Closing Opportunity Gaps Measure	10
ELA Closing Opportunity Gaps Measure	10
Student Engagement Indicator	10
Chronic Absenteeism Measure	10

The Pooled Proficiency measure is based on proficiency rates calculated from the required state assessments in ELA and Math (3rd to 5th grade) as well as Science (5th grade).

$$\frac{\# \text{ proficient in Math} + \# \text{ in ELA} + \# \text{ in Science}}{\# \text{ assessed in Math} + \# \text{ in ELA} + \# \text{ in Science}} \times 100$$

Data sources: Smarter Balanced and NAA results files.

Note: low school or student group assessment participation (less than 95%) may lead to a point deduction in this indicator.

The Read-By-Grade-3 measure is the ELA proficiency rate of 3rd graders.

$$\frac{\# \text{ 3rd graders proficient in ELA}}{\# \text{ 3rd graders assessed in ELA}} \times 100$$

Data sources: Smarter Balanced and NAA results files.

Elementary School Indicators and Measures



Elementary (grades K-5)

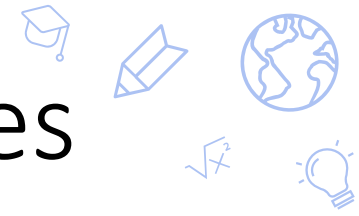
INDICATOR/MEASURES	POINTS
Academic Achievement Indicator	25
Pooled Proficiency Measure	20
Read-by-Grade-3 Measure	5
Growth Indicator	35
Math Median Growth Percentile (MGP) Measure	10
ELA MGP Measure	10
Math Adequate Growth Percentile (AGP) Measure	7.5
ELA AGP Measure	7.5
English Language Proficiency Indicator	10
WIDA AGP Measure	10
Closing Opportunity Gaps Indicator	20
Math Closing Opportunity Gaps Measure	10
ELA Closing Opportunity Gaps Measure	10
Student Engagement Indicator	10
Chronic Absenteeism Measure	10

Growth is complex.

- Growth uses at least two consecutive years of Smarter Balanced test scores.
- The NDE calculates how much growth a student has made compared to their peers via student growth percentiles (SGPs), a number from 1 to 99.
 - For example, an SGP of 75 means a student has shown more growth than 75% of their peers.
- The NDE also uses adequate growth percentiles (AGP) to calculate if a student is on track to proficiency. The AGP is the minimum SGP a student must earn to remain or become proficient within 3 years or by the end of 8th grade.

Growth is not calculated for 3rd graders (need 2 years of scores) or for students that take the NAA. Calculations generally use additional rules, including but not limited to YIS=1.

Elementary School Indicators and Measures



Elementary (grades K-5)

INDICATOR/MEASURES	POINTS
Academic Achievement Indicator	25
Pooled Proficiency Measure	20
Read-by-Grade-3 Measure	5
Growth Indicator	35
Math Median Growth Percentile (MGP) Measure	10 ●
ELA MGP Measure	10 ●
Math Adequate Growth Percentile (AGP) Measure	7.5 ●
ELA AGP Measure	7.5 ●
English Language Proficiency Indicator	10
WIDA AGP Measure	10
Closing Opportunity Gaps Indicator	20
Math Closing Opportunity Gaps Measure	10
ELA Closing Opportunity Gaps Measure	10
Student Engagement Indicator	10
Chronic Absenteeism Measure	10

The school median growth percentile (MGP) is:

$$\textit{median (student SGPs)}$$

Example: with SGPs of 50, 60, 70, 80, 90...the MGP is 70—the SGP in the middle of the ordered list.

Data source: NDE Smarter growth file.

The school adequate growth percentile (AGP) measure is:

$$\frac{\textit{\# students meeting AGP target}}{\textit{\# growth records}} \times 100$$

Data source: NDE Smarter growth file.

Elementary School Indicators and Measures



Elementary (grades K-5)

INDICATOR/MEASURES	POINTS
Academic Achievement Indicator	25
Pooled Proficiency Measure	20
Read-by-Grade-3 Measure	5
Growth Indicator	35
Math Median Growth Percentile (MGP) Measure	10
ELA MGP Measure	10
Math Adequate Growth Percentile (AGP) Measure	7.5
ELA AGP Measure	7.5
English Language Proficiency Indicator	10
WIDA AGP Measure	10 ●
Closing Opportunity Gaps Indicator	20
Math Closing Opportunity Gaps Measure	10
ELA Closing Opportunity Gaps Measure	10
Student Engagement Indicator	10
Chronic Absenteeism Measure	10

The WIDA Adequate Growth Percentile (AGP) measure is calculated similarly to the AGPs under the Growth indicator, except WIDA assessment results are used to calculate student growth percentiles and student AGPs (targets).

$$\frac{\# \text{ students meeting WIDA AGP}}{\# \text{ WIDA growth records}} \times 100$$

Data source: NDE WIDA growth file.

Elementary School Indicators and Measures



Elementary (grades K-5)

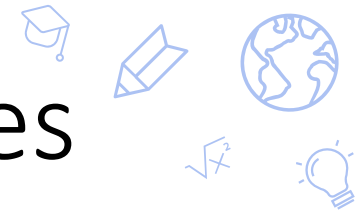
INDICATOR/MEASURES	POINTS
Academic Achievement Indicator	25
Pooled Proficiency Measure	20
Read-by-Grade-3 Measure	5
Growth Indicator	35
Math Median Growth Percentile (MGP) Measure	10
ELA MGP Measure	10
Math Adequate Growth Percentile (AGP) Measure	7.5
ELA AGP Measure	7.5
English Language Proficiency Indicator	10
WIDA AGP Measure	10
Closing Opportunity Gaps Indicator	20
Math Closing Opportunity Gaps Measure	10 ●
ELA Closing Opportunity Gaps Measure	10 ●
Student Engagement Indicator	10
Chronic Absenteeism Measure	10

The Opportunity Gaps measures are the percent of students that met their current year growth target who were not proficient last year.

$$\frac{\# \text{ meeting AGP that were not proficient last year}}{\# \text{ not proficient last year}} \times 100$$

Data source: Current year NDE Smarter growth file, prior year Smarter Balanced results file.

Elementary School Indicators and Measures



Elementary (grades K-5)

INDICATOR/MEASURES	POINTS
Academic Achievement Indicator	25
Pooled Proficiency Measure	20
Read-by-Grade-3 Measure	5
Growth Indicator	35
Math Median Growth Percentile (MGP) Measure	10
ELA MGP Measure	10
Math Adequate Growth Percentile (AGP) Measure	7.5
ELA AGP Measure	7.5
English Language Proficiency Indicator	10
WIDA AGP Measure	10
Closing Opportunity Gaps Indicator	20
Math Closing Opportunity Gaps Measure	10
ELA Closing Opportunity Gaps Measure	10
Student Engagement Indicator	10
Chronic Absenteeism Measure	10 ●

The Chronic Absenteeism measure is the percent of students that were absent 10% or more of their school days.

$$\frac{\# \text{ students absent 10\% or more of school days}}{\# \text{ students}} \times 100$$

Data source: Using a report available in Infinite Campus, charter schools annually submit these data to the SPCSA, who provides it to the NDE.

Middle School Indicators and Measures



Middle (grades 6-8)

INDICATOR/MEASURES	POINTS
Academic Achievement Indicator	25
Pooled Proficiency Measure	25
Growth Indicator	30
Math Median Growth Percentile (MGP) Measure	10
ELA MGP Measure	10
Math Adequate Growth Percentile (AGP) Measure	5
ELA AGP Measure	5
English Language Proficiency Indicator	10
WIDA AGP Measure	10
Closing Opportunity Gaps Indicator	20
Math Closing Opportunity Gaps Measure	10
ELA Closing Opportunity Gaps Measure	10
Student Engagement Indicator	15
Chronic Absenteeism Measure	10
Academic Learning Plans Measure	2
8 th Grade Credit Requirements (NAC 389) Measure	3

These are all calculated in the exact same way the elementary school measures, except middle school students are included instead (grades 6, 7, and 8).

Middle School Indicators and Measures



Middle (grades 6-8)

INDICATOR/MEASURES	POINTS
Academic Achievement Indicator	25
Pooled Proficiency Measure	25
Growth Indicator	30
Math Median Growth Percentile (MGP) Measure	10
ELA MGP Measure	10
Math Adequate Growth Percentile (AGP) Measure	5
ELA AGP Measure	5
English Language Proficiency Indicator	10
WIDA AGP Measure	10
Closing Opportunity Gaps Indicator	20
Math Closing Opportunity Gaps Measure	10
ELA Closing Opportunity Gaps Measure	10
Student Engagement Indicator	15
Chronic Absenteeism Measure	10
Academic Learning Plans Measure	2 ●
8 th Grade Credit Requirements (NAC 389) Measure	3

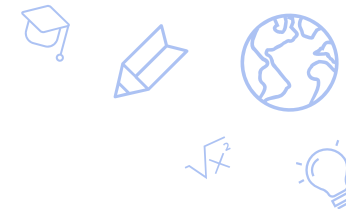
The Academic Learning Plans measure is calculated as the percent of students with an academic learning plan:

$$\frac{\# \text{ students with an academic learning plan}}{\# \text{ students}} \times 100$$

[NRS 388.165](#) requires all middle school students to have an academic learning plan. This measure is essentially two free points, so make sure to have these plans set up for your students.

Data source: Using a report available in Infinite Campus, charter schools annually submit these data to the SPCSA, who provides it to the NDE.

Middle School Indicators and Measures



Middle (grades 6-8)

INDICATOR/MEASURES	POINTS
Academic Achievement Indicator	25
Pooled Proficiency Measure	25
Growth Indicator	30
Math Median Growth Percentile (MGP) Measure	10
ELA MGP Measure	10
Math Adequate Growth Percentile (AGP) Measure	5
ELA AGP Measure	5
English Language Proficiency Indicator	10
WIDA AGP Measure	10
Closing Opportunity Gaps Indicator	20
Math Closing Opportunity Gaps Measure	10
ELA Closing Opportunity Gaps Measure	10
Student Engagement Indicator	15
Chronic Absenteeism Measure	10
Academic Learning Plans Measure	2
8 th Grade Credit Requirements (NAC 389) Measure	3 ●

The 8th Grade Credit Requirements measure is the percent of 8th grade students met the credit requirements to be promoted to high school:

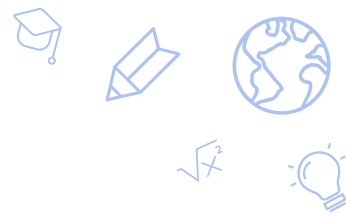
$$\frac{\text{\# 8th graders meeting credit requirements}}{\text{\# 8th graders}} \times 100$$

Per [NAC 389.445](#), a student must earn the following units of credit with a passing grade during 7th and 8th grade for promotion to high school:

- 1.5 units of credit in English AND math; and
- 1 unit of credit in science AND social studies.

Data source: Using a report available in Infinite Campus, charter schools annually submit these data to the SPCSA, who provides it to the NDE.

High School Indicators and Measures

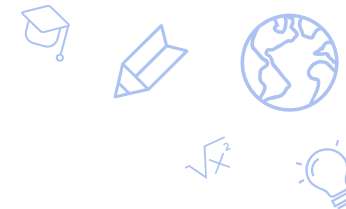


High (grades 9-12)

INDICATOR/MEASURES	POINTS
Academic Achievement Indicator	25
Math Proficiency Measure	10
ELA Proficiency Measure	10
Science Proficiency Measure	5
Graduation Rates Indicator	30
4-year ACGR Measure	25
5-year ACGR Measure	5
English Language Proficiency Indicator	10
WIDA AGP Measure	10
College and Career Readiness Indicator	25
Post-Secondary Preparation Participation Measure	10
Post-Secondary Preparation Completion Measure	10
Advanced/CCR Diploma Measure	5
Student Engagement Indicator	10
Chronic Absenteeism Measure	5
9 th Grade Credit Sufficiency Measure	5

These are calculated in the exact same way as the elementary and middle school measures, except these include students in grades 9-12.

High School Indicators and Measures



High (grades 9-12)

INDICATOR/MEASURES	POINTS
Academic Achievement Indicator	25
Math Proficiency Measure	10 ●
ELA Proficiency Measure	10 ●
Science Proficiency Measure	5
Graduation Rates Indicator	30
4-year ACGR Measure	25
5-year ACGR Measure	5
English Language Proficiency Indicator	10
WIDA AGP Measure	10
College and Career Readiness Indicator	25
Post-Secondary Preparation Participation Measure	10
Post-Secondary Preparation Completion Measure	10
Advanced/CCR Diploma Measure	5
Student Engagement Indicator	10
Chronic Absenteeism Measure	5
9 th Grade Credit Sufficiency Measure	5

Unlike elementary and middle school proficiency measures, where math, ELA, and science results are pooled together, high school proficiency measures are calculated for each subject area separately.

Math and ELA proficiency measures use 11th grade ACT/NAA scores and are calculated as such:

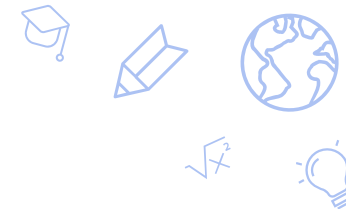
$$\frac{\# \textit{proficient}}{\# \textit{assessed}} \times 100$$

Data source: ACT and NAA files.

Important notes:

1. ONLY ACT test scores from state test date(s) are used. Results from other ACT dates do not count in the NSPF.
2. Low school or student group assessment participation (less than 95%) may lead to a point deduction in this indicator.
3. ACT participation on a state test day is a graduation requirement.

High School Indicators and Measures



High (grades 9-12)

INDICATOR/MEASURES	POINTS
Academic Achievement Indicator	25
Math Proficiency Measure	10
ELA Proficiency Measure	10
Science Proficiency Measure	5 ●
Graduation Rates Indicator	30
4-year ACGR Measure	25
5-year ACGR Measure	5
English Language Proficiency Indicator	10
WIDA AGP Measure	10
College and Career Readiness Indicator	25
Post-Secondary Preparation Participation Measure	10
Post-Secondary Preparation Completion Measure	10
Advanced/CCR Diploma Measure	5
Student Engagement Indicator	10
Chronic Absenteeism Measure	5
9 th Grade Credit Sufficiency Measure	5

Because schools may choose to give the HS science assessment in the 9th or 10th grade, this measure uses prior and current year results. It is calculated as such:

$$\frac{\text{number proficient}}{\text{number assessed}} \times 100$$

$$\frac{(9Gr\ PriorYr + 10Gr\ CurrYr + 11Gr\ NAA\ CurrYr)}{(9Gr\ PriorYr + 10Gr\ CurrYr + 11Gr\ NAA\ CurrYr)}$$

Data sources: prior year HS Science file, current year HS Science file, current year NAA file.

High School Indicators and Measures



High (grades 9-12)

INDICATOR/MEASURES	POINTS
Academic Achievement Indicator	25
Math Proficiency Measure	10
ELA Proficiency Measure	10
Science Proficiency Measure	5
Graduation Rates Indicator	30
4-year ACGR Measure	25 ●
5-year ACGR Measure	5 ●
English Language Proficiency Indicator	10
WIDA AGP Measure	10
College and Career Readiness Indicator	25
Post-Secondary Preparation Participation Measure	10
Post-Secondary Preparation Completion Measure	10
Advanced/CCR Diploma Measure	5
Student Engagement Indicator	10
Chronic Absenteeism Measure	5
9 th Grade Credit Sufficiency Measure	5

The 4- and 5-year adjusted cohort graduation rate (ACGR) measures are similar. Both use a cohort of students that begins in 9th grade, where transfer ins are added to the cohort, and transfer outs are removed. At the end of 4 or 5 years, rates are calculated as:

$$\frac{\# \text{ graduates}}{\# \text{ graduates} + \# \text{ non graduates}} \times 100$$

Data source: 4- and 5-year graduation rate files, validated by charter schools during graduation rate validation processes.

Because graduation rates are not finalized until after the NSPF release, graduation rates must be lagged one year in the NSPF.

Example: The 21-22 school year NSPF ratings, which will be released in September 2022, will use graduation rates from the class of 20-21.

YIS is not used in graduation rate calculations.

High School Indicators and Measures



High (grades 9-12)

INDICATOR/MEASURES	POINTS
Academic Achievement Indicator	25
Math Proficiency Measure	10
ELA Proficiency Measure	10
Science Proficiency Measure	5
Graduation Rates Indicator	30
4-year ACGR Measure	25
5-year ACGR Measure	5
English Language Proficiency Indicator	10
WIDA AGP Measure	10
College and Career Readiness Indicator	25
Post-Secondary Preparation Participation Measure	10 ●
Post-Secondary Preparation Completion Measure	10 ●
Advanced/CCR Diploma Measure	5
Student Engagement Indicator	10
Chronic Absenteeism Measure	5
9 th Grade Credit Sufficiency Measure	5

These CCR measures are the percent of 12th graders who were participants and/or completers in Advanced Placement, International Baccalaureate, Career and Technical Education, and/or Dual Credit/Dual Enrollment during their HS career:

$$\frac{\# \text{ CCR participants (or completers)}}{\# \text{ students with a current year OYOG}} \times 100$$

Data source: Charter schools annually submit these data in an NDE template to the SPCSA, who provides it to the NDE.

Advanced Placement (AP)

Participant – passed ≥ 1 AP course during HS career.

Completer – passed ≥ 1 AP exam with 3+ score during HS career.

International Baccalaureate (IB)

Participant – passed ≥ 1 IB course in IB Program during HS career.

Completer – passed ≥ 1 IB exam in IB Program with 4+ score during HS career.

Dual Credit/Dual Enrollment (DC/DE)

Participant – passed ≥ 2 DC/DE courses and earned ≥ 6 college credits during HS career.

Completer – passed ≥ 4 DC/DE courses and earned ≥ 12 college credits during HS career.

Career and Technical Education (CTE)

Participant – in approved CTE program and is CTE Concentrator (completed Level 1 and 2 courses) during HS career.

Completer – in approved CTE program and (1) is CTE completer and (2) qualifies to take end of program and workplace readiness assessments.

YIS is not used in CCR calculations.

High School Indicators and Measures



High (grades 9-12)

INDICATOR/MEASURES	POINTS
Academic Achievement Indicator	25
Math Proficiency Measure	10
ELA Proficiency Measure	10
Science Proficiency Measure	5
Graduation Rates Indicator	30
4-year ACGR Measure	25
5-year ACGR Measure	5
English Language Proficiency Indicator	10
WIDA AGP Measure	10
College and Career Readiness Indicator	25
Post-Secondary Preparation Participation Measure	10
Post-Secondary Preparation Completion Measure	10
Advanced/CCR Diploma Measure	5 ●
Student Engagement Indicator	10
Chronic Absenteeism Measure	5
9 th Grade Credit Sufficiency Measure	5

The Advanced or CCR Diploma measure is the percent of students who received an Advanced or CCR diploma.

$$\frac{\# \text{ graduates with an Advanced or CCR diploma}}{\# \text{ graduates}} \times 100$$

Data source: 4-year graduation rate file, validated by charter schools during graduation rate validation processes.

Again, these data are lagged one year since they are graduation rate data that is not available until after the NSPF is released.

YIS is not used in graduation rate calculations.

High School Indicators and Measures



High (grades 9-12)

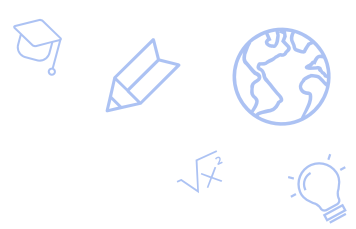
INDICATOR/MEASURES	POINTS
Academic Achievement Indicator	25
Math Proficiency Measure	10
ELA Proficiency Measure	10
Science Proficiency Measure	5
Graduation Rates Indicator	30
4-year ACGR Measure	25
5-year ACGR Measure	5
English Language Proficiency Indicator	10
WIDA AGP Measure	10
College and Career Readiness Indicator	25
Post-Secondary Preparation Participation Measure	10
Post-Secondary Preparation Completion Measure	10
Advanced/CCR Diploma Measure	5
Student Engagement Indicator	10
Chronic Absenteeism Measure	5
9 th Grade Credit Sufficiency Measure	5 ●

The 9th Grade Credit Sufficiency measure is the percent of 9th grade students who have earned 5 or more credits by the end of their 9th grade year:

$$\frac{\# \text{ 9th graders meeting credit requirements}}{\# \text{ 9th graders}} \times 100$$

[NAC 389.659](#) specifies a 9th grade student must earn 5 credits grade for promotion to 10th grade.

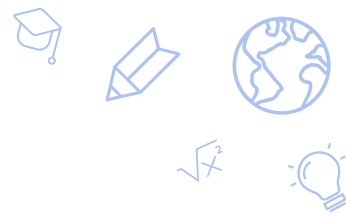
Data source: Using a report available in Infinite Campus, charter schools annually submit these data to the SPCSA, who provides it to the NDE.



Agenda

- 1) Purpose/History of the NSPF
- 2) NSPF Overview
- 3) NSPF Indicators and Measures
- 4) NSPF Reports**
- 5) Resources

Star Rating Reports



On the home page of the [Nevada Accountability Portal](#), one can search by year and by school.

The screenshot shows the Nevada Accountability Portal website. At the top, there is a navigation menu with links for "State" (Nevada Growth Model), "Districts & Schools" (Recent Releases), and "Help" (Resources). Below the navigation is a banner image of children with the text "Welcome to the Nevada Accountability Portal".

The main content area contains the following text:

In compliance with the collection of data required by both federal and state law, this website will provide district and school level data via customizable reports.

Next Portal Update: Portal will be updated with the 2020-21 accountability data in September 2021.

There are two main search options:

- I want to see State Data**
- I want to see District or School Data**

The "District or School Data" search form includes the following fields:

- Year: 2018-2019 (dropdown menu)
- Search: St Rose (text input)
- District: Pinecrest Academy of Nevada, St Rose Campus (dropdown menu)
- School: All Schools (dropdown menu)
- Go (blue button)

Star Rating Reports



At a Glance Data Details

Accountability Report Card School Rating Report

2018-2019 Pinecrest Academy of Nevada, St Rose Campus At a Glance

School Rating in 2018-2019: PAN St. Rose ES ★★★★★☆ PAN St. Rose MS ★★★★★★

2018-2019

992 Total Enrollment

27:1 Student Teacher Ratio

N/A Teachers

\$6,885 Per Pupil Expenditures

N/A Graduation Rate

N/A Average ACT Composite

41 Reported Bullying Incidents

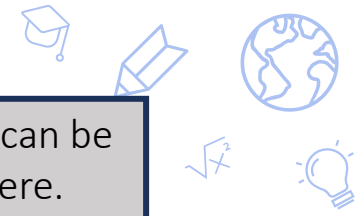
1 Reported Cyber Bullying Incidents

Full NSPF reports can be accessed here.

The school's home page displays a snapshot of the star ratings.

The year can be revised here.

Star Rating Reports



At a Glance Data Details

Accountability Report Card School Rating Report

Switch between school levels here.

Download a PDF of the report here

The year can be revised here.

2018-2019

Elementary Middle

Download

Pinecrest Academy St Rose

School Year 2018-2019 Nevada School Rating

School Level: Elementary School
 Grade Levels: 0K-08
 District: State Public Charter School Authority
 School: 1385 E. Cactus Ave.
 Address: Las Vegas, NV 89183



School Type: *Charter SPCSA*
 School Designation: *No Designation*
 95% Assessment Participation: *Met*



Student Race/Ethnicity

41.6%	White
4.8%	Bl/Afr Am
25.9%	Hisp/Latino
12.8%	Asian
0.1%	Am Ind/AK Nat

School Performance History

School Year	Index Score/ Star Rating
2017-2018	94.5 ★★★★★
2016-2017	N/A N/A

Additional Student Groups



1. School info, including demographics

Pinecrest Academy St Rose School Year 2018-2019 Nevada School Rating

School Level: Elementary School
 Grade Levels: OK-08
 District: State Public Charter School Authority
 School Address: 1385 E. Cactus Ave. Las Vegas, NV 89183

School Type: Charter SPCSA
 School Designation: No Designation
 95% Assessment Participation: Met

80.0 Total Index Score

Student Race/Ethnicity

41.6%	White
4.8%	Bl/Afr Am
25.9%	Hisp/Latino
12.8%	Asian
0.1%	Am Ind/AK Nat
3.3%	Pac Isl
11.1%	Two or More

School Performance History

School Year	Index Score/Star Rating
2017-2018	94.5 ★★★★★
2016-2017	N/A N/A

Additional Student Groups

Eng Lnrs	0%
Stud w/Disab	~10%
Econ Disadv	~15%

3. Information on designation (if low performance), and whether 95% assessment participation was met.

2. A school's current and prior year ratings.

4. A descriptor of the school rating, how ratings are determined, and a point range to star rating table.

What does my school rating mean?

Four-Star school: Recognizes a commendable school that has performed well for all students and subgroups. A four star school demonstrates satisfactory to strong academic performance for all students. Further, the school is successfully promoting academic progress for all student groups as reflected in closing opportunity gaps. The school does not fail to meet expectations for any group on any indicator.

How are school star ratings determined?

Schools receive points based on student performance across various Indicators and Measures. These points are totaled and divided by the points possible to produce an index score from 1-100. This index score is associated with a one- to five-star school rating.

Determined based on total index

Below 27	★
At or above 27 but less than 50	★★
At or above 50 and less than 67	★★★
At or above 67 and less than 84	★★★★
At or above 84	★★★★★

5. Dials display points earned in the indicators, while tables show school performance in the measures, along with district data.

2018-2019 School Performance

Academic Achievement Indicator 25/25

Measure	School Rate	District Rate
Pooled Proficiency	71.8	54.0
Math Proficiency	76.9	54.5
ELA Proficiency	76.9	60.1
Science Proficiency	45.0	34.8
Read-by-Grade-3 Proficiency	85.1	56.7

Growth Indicator 27/35

Measure	School Median	District Median
Math MGP	60.0	55.0
ELA MGP	45.0	52.0

	School Rate	District Rate
Met Math AGP Target	68.7	49.8
Met ELA AGP Target	64.5	59.8

English Language Proficiency Indicator N/A

Measure	School Rate	District Rate
Met EL AGP Target	-	56.7

Closing Opportunity Gaps Indicator 11/20

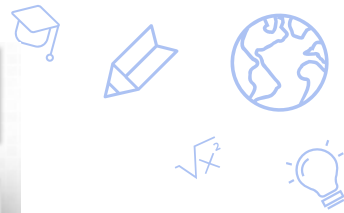
Measure	School Rate	District Rate
Prior Non-Proficient Met	44.8	27.9
Math AGP Target		
Prior Non-Proficient Met	19.0	39.3
ELA AGP Target		

Student Engagement Indicator 9/10

Measure	School Rate	District Rate
Chronic Absenteeism	6.4	8.0
Climate Survey Participation	89.5	N/A

Climate Survey Participation is not a point-earning measure.

6. If the Indicator heading is clicked (on website), more information is displayed.



Pinecrest Academy St Rose

School Year 2018-2019 Nevada School Rating



Student Growth

Student growth is a measure of performance on the state assessments over time.

- Student Growth Percentile (SGP) is a measure of student achievement over time and compares the achievement over time and compares the achievement of similar subgroups of students from one test administration to the next. An SGP from 35 to 65 is considered typical growth.
- Median Growth Percentile (MGP) is a summary of the SGPs in a school. A school's MGP is determined by rank ordering all the SGPs in the school from the lowest to highest and finding the median or middle number.
- Adequate Growth Percentile (AGP) describes the amount of growth a student needs to remain or become proficient on the state assessment in three years. This is the minimum SGP a student must meet or exceed to be on track to target.

Schools need to have ten records in the "all students" group to receive points. Any subgroup with an assessed population less than ten will not be reported on the given Measures. Only students who have been enrolled at the school at least half the year will be included in the Measures in this Indicator.

MGP Growth Data

2

Math MGP Points Earned: 8/10 ELA MGP Points Earned: 4/10

Groups	2019		2018		2018		2018	
	Math MGP	District Math MGP	ELA MGP	District ELA MGP	Math MGP	District Math MGP	ELA MGP	District ELA MGP
All Students	60.0	55.0	45.0	52.0	62.5	53.0	67.0	49.0
American Indian/Alaska Native	-	55.5	-	67.0	-	49.0	-	54.0
Asian	66.0	58.0	51.0	59.0	74.5	61.5	78.0	62.0
Black/African American	74.5	48.0	49.5	43.5	33.5	45.0	68.5	44.0
Hispanic/Latino	70.0	54.0	49.0	51.0	61.0	49.0	58.0	48.0
Pacific Islander	45.0	43.0	19.5	46.0	-	56.0	-	46.0
Two or More Races	56.5	53.0	27.0	50.0	60.0	53.0	63.0	51.5
White/Caucasian	56.0	57.0	45.0	54.0	62.0	55.0	68.0	49.0
Special Education	51.5	51.0	33.5	42.0	52.0	49.0	71.0	40.5
English Learners Current + Former	72.0	59.0	44.0	53.0	60.0	49.0	52.0	52.0
English Learners Current	-	56.0	-	49.0	58.0	43.5	45.5	44.0
Economically Disadvantaged	60.0	53.0	45.0	47.0	66.0	46.0	71.0	46.0

3

1. A detailed description of the indicator and its measures.

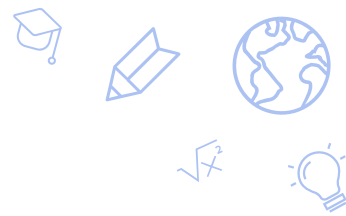
2. Points earned in each measure.

3. Multiple years of data for student groups



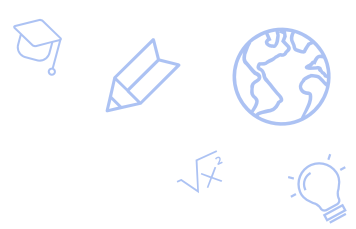
Agenda

- 1) Purpose/History of the NSPF
- 2) NSPF Overview
- 3) NSPF Indicators and Measures
- 4) NSPF Reports
- 5) **Resources**



Where to Find More Information

- The NDE [Technical](#) and [Procedures](#) Manuals outline the NSPF in detail, including the rules for all calculations performed.
- The NDE [Nevada Accountability Portal](#) allows one to search for school star rating reports and provides additional [resources](#).



Outcomes

- One should now:
 - Have an enhanced understanding of the NSPF, including:
 - Its purpose.
 - The performance it measures.
 - Know how to interpret an NSPF star rating report.
 - Know where to find additional information on the NSPF, if needed.



Thank you!

charterschools.nv.gov





Contact Info

- SPCSA Assessment/Accountability staff
 - Selcuk Ozdemir: selcuk@spcsa.nv.gov
 - Brandon Gaytán: brandongaytan@spcsa.nv.gov
 - Pat Malloy: pat.malloy@spcsa.nv.gov



Appendix: NSPF Elementary Sch. Point Tables

ES Pooled Proficiency PAT

Rate (%)	Points	Rate (%)	Points	Rate (%)	Points
≥60	20	<52 and ≥50	13	<40 and ≥38	6
<60 and ≥58	19	<50 and ≥49	12	<38 and ≥35	5
<58 and ≥56	18	<49 and ≥48	11	<35 and ≥33	4
<56 and ≥55	17	<48 and ≥46	10	<33 and ≥30	3
<55 and ≥54	16	<46 and ≥44	9	<30 and ≥26	2
<54 and ≥53	15	<44 and ≥42	8	<26	1
<53 and ≥52	14	<42 and ≥40	7		

RBG3 PAT

Rate	Points
≥63	5
<63 and ≥51	4
<51 and ≥38	3
<38 and ≥25	2
<25	1



Appendix: NSPF Elementary Sch. Point Tables

ES Math/ELA MGP PATs

Math Median	Math Points	Math Median	Math Points
≥65	10	<51 and ≥48	5
<65 and ≥61	9	<48 and ≥44	4
<61 and ≥58	8	<44 and ≥40	3
<58 and ≥54	7	<40 and ≥35	2
<54 and ≥51	6	<35	1

ELA Median	ELA Points	ELA Median	ELA Points
≥65	10	<51 and ≥48	5
<65 and ≥61	9	<48 and ≥44	4
<61 and ≥58	8	<44 and ≥40	3
<58 and ≥54	7	<40 and ≥35	2
<54 and ≥51	6	<35	1

ES Math/ELA AGP PATs

Math Rate	Math Points	Math Rate	Math Points
≥52	7.5	<35 and ≥33	3.5
<52 and ≥50	7	<33 and ≥31	3
<50 and ≥47	6.5	<31 and ≥29	2.5
<47 and ≥44	6	<29 and ≥27	2
<44 and ≥41	5.5	<27 and ≥25	1.5
<41 and ≥39	5	<25 and ≥23	1
<39 and ≥37	4.5	<23	0.5
<37 and ≥35	4		

ELA Rate	ELA Points	ELA Rate	ELA Points
≥63	7.5	<49 and ≥47	3.5
<63 and ≥61	7	<47 and ≥45	3
<61 and ≥59	6.5	<45 and ≥43	2.5
<59 and ≥57	6	<43 and ≥41	2
<57 and ≥55	5.5	<41 and ≥38	1.5
<55 and ≥53	5	<38 and ≥35	1
<53 and ≥51	4.5	<35	0.5
<51 and ≥49	4		



Appendix: NSPF Elementary Sch. Point Tables

ES WIDA AGP PAT

Rate	Points	Rate	Points
≥57	10	<45 and ≥42	5
<57 and ≥54	9	<42 and ≥39	4
<54 and ≥51	8	<39 and ≥36	3
<51 and ≥48	7	<36 and ≥33	2
<48 and ≥45	6	<33	1

ES Math/ELA Closing Opportunity Gaps PATs

Math Rate	Math Points	Math Rate	Math Points
≥42	10	<30 and ≥27	5
<42 and ≥39	9	<27 and ≥24	4
<39 and ≥36	8	<24 and ≥20	3
<36 and ≥33	7	<20 and ≥16	2
<33 and ≥30	6	<16	1

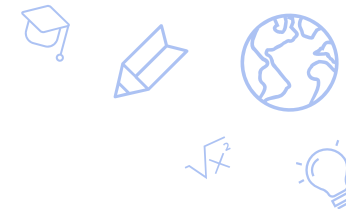
ELA Rate	ELA Points	ELA Rate	ELA Points
≥52	10	<40 and ≥37	5
<52 and ≥49	9	<37 and ≥34	4
<49 and ≥46	8	<34 and ≥31	3
<46 and ≥43	7	<31 and ≥27	2
<43 and ≥40	6	<27	1



Appendix: NSPF Elementary Sch. Point Tables

ES Chronic Absenteeism PAT

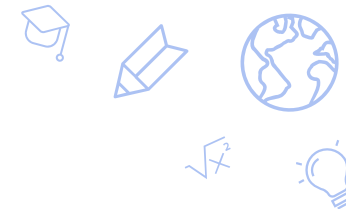
Rate	Points	Rate	Points	Rate	Points
<5	10	≥11 and <12	6.5	≥18 and <19	3
≥5 and <6	9.5	≥12 and <13	6	≥19 and <20	2.5
≥6 and <7	9	≥13 and <14	5.5	≥20 and <21	2
≥7 and <8	8.5	≥14 and <15	5	≥21 and <22	1.5
≥8 and <9	8	≥15 and <16	4.5	≥22 and <23	1
≥9 and <10	7.5	≥16 and <17	4	≥23 and <24	0.5
≥10 and <11	7	≥17 and <18	3.5	≥24	0



Appendix: NSPF Middle Sch. Point Tables

MS Pooled Proficiency PAT

Rate (%)	Points	Rate (%)	Points	Rate (%)	Points
≥56	25	<42 and ≥41	16	<28 and ≥27	7
<56 and ≥55	24	<41 and ≥40	15	<27 and ≥26	6
<55 and ≥54	23	<40 and ≥39	14	<26 and ≥25	5
<54 and ≥52	22	<39 and ≥37	13	<25 and ≥24	4
<52 and ≥50	21	<37 and ≥36	12	<24 and ≥23	3
<50 and ≥48	20	<36 and ≥34	11	<23 and ≥22	2
<48 and ≥46	19	<34 and ≥32	10	<22	1
<46 and ≥44	18	<32 and ≥30	9		
<44 and ≥42	17	<30 and ≥28	8		



Appendix: NSPF Middle Sch. Point Tables

MS Math/ELA MGP PATs

Math Median	Math Points	Math Median	Math Points
≥65	10	<51 and ≥48	5
<65 and ≥61	9	<48 and ≥44	4
<61 and ≥58	8	<44 and ≥40	3
<58 and ≥54	7	<40 and ≥35	2
<54 and ≥51	6	<35	1

ELA Median	ELA Points	ELA Median	ELA Points
≥65	10	<51 and ≥48	5
<65 and ≥61	9	<48 and ≥44	4
<61 and ≥58	8	<44 and ≥40	3
<58 and ≥54	7	<40 and ≥35	2
<54 and ≥51	6	<35	1

MS Math/ELA AGP PATs

Math Rate	Math Points	Math Rate	Math Points
≥42	5	<27 and ≥24	2.5
<42 and ≥39	4.5	<24 and ≥21	2
<39 and ≥35	4	<21 and ≥18	1.5
<35 and ≥31	3.5	<18 and ≥15	1
<31 and ≥27	3	<15	0.5

ELA Rate	ELA Points	ELA Rate	ELA Points
≥61	5	<48 and ≥45	2.5
<61 and ≥58	4.5	<45 and ≥41	2
<58 and ≥55	4	<41 and ≥37	1.5
<55 and ≥51	3.5	<37 and ≥32	1
<51 and ≥48	3	<32	0.5



Appendix: NSPF Middle Sch. Point Tables

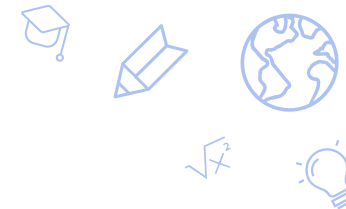
MS WIDA AGP PAT

Rate	Points	Rate	Points
≥ 36	10	< 23 and ≥ 20	5
< 36 and ≥ 32	9	< 20 and ≥ 18	4
< 32 and ≥ 29	8	< 18 and ≥ 16	3
< 29 and ≥ 26	7	< 16 and ≥ 13	2
< 26 and ≥ 23	6	< 13	1

MS Math/ELA Closing Opportunity Gaps PATs

Math Rate	Math Points	Math Rate	Math Points
≥ 24	10	< 15 and ≥ 13	5
< 24 and ≥ 21	9	< 13 and ≥ 11	4
< 21 and ≥ 19	8	< 11 and ≥ 10	3
< 19 and ≥ 17	7	< 10 and ≥ 8	2
< 17 and ≥ 15	6	< 8	1

ELA Rate	ELA Points	ELA Rate	ELA Points
≥ 34	10	< 26 and ≥ 24	5
< 34 and ≥ 32	9	< 24 and ≥ 22	4
< 32 and ≥ 30	8	< 22 and ≥ 19	3
< 30 and ≥ 28	7	< 19 and ≥ 16	2
< 28 and ≥ 26	6	< 16	1



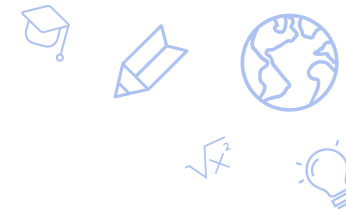
Appendix: NSPF Middle Sch. Point Tables

MS Chronic Absenteeism PAT

Rate	Points	Rate	Points	Rate	Points
<5	10	≥11 and <12	6.5	≥18 and <19	3
≥5 and <6	9.5	≥12 and <13	6	≥19 and <20	2.5
≥6 and <7	9	≥13 and <14	5.5	≥20 and <21	2
≥7 and <8	8.5	≥14 and <15	5	≥21 and <22	1.5
≥8 and <9	8	≥15 and <16	4.5	≥22 and <23	1
≥9 and <10	7.5	≥16 and <17	4	≥23 and <24	0.5
≥10 and <11	7	≥17 and <18	3.5	≥24	0

MS Academic Learning Plans PAT

Rate	Points
≥95	2



Appendix: NSPF Middle Sch. Point Tables

MS 8th Grade Credit Requirements PAT

Rate	Points
≥ 90	3
< 90 and ≥ 75	2
< 75 and ≥ 60	1
< 60	0

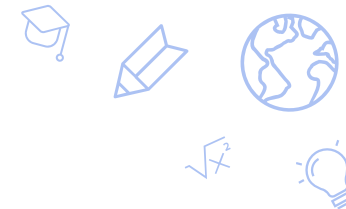


Appendix: NSPF High Sch. Point Tables

HS Math/ELA PATs

Math Rate	Math Points	Math Rate	Math Points
≥ 42.4	10	< 30.3 and ≥ 28.3	5
< 42.4 and ≥ 41.1	9.5	< 28.3 and ≥ 25.3	4.5
< 41.1 and ≥ 39.7	9	< 25.3 and ≥ 22.4	4
< 39.7 and ≥ 38.4	8.5	< 22.4 and ≥ 19.4	3.5
< 38.4 and ≥ 37	8	< 19.4 and ≥ 16.5	3
< 37 and ≥ 35.7	7.5	< 16.5 and ≥ 13.5	2.5
< 35.7 and ≥ 34.3	7	< 13.5 and ≥ 10.6	2
< 34.3 and ≥ 33	6.5	< 10.6 and ≥ 7.6	1.5
< 33 and ≥ 31.6	6	< 7.6 and ≥ 4.7	1
< 31.6 and ≥ 30.3	5.5	< 4.7	0.5

ELA Rate	ELA Points	ELA Rate	ELA Points
≥ 55.9	10	< 46.8 and ≥ 44.8	5
< 55.9 and ≥ 54.9	9.5	< 44.8 and ≥ 41.1	4.5
< 54.9 and ≥ 53.9	9	< 41.1 and ≥ 37.3	4
< 53.9 and ≥ 52.9	8.5	< 37.3 and ≥ 33.5	3.5
< 52.9 and ≥ 51.9	8	< 33.5 and ≥ 29.8	3
< 51.9 and ≥ 50.9	7.5	< 29.8 and ≥ 26	2.5
< 50.9 and ≥ 49.8	7	< 26 and ≥ 22.2	2
< 49.8 and ≥ 48.8	6.5	< 22.2 and ≥ 18.4	1.5
< 48.8 and ≥ 47.8	6	< 18.4 and ≥ 14.7	1
< 47.8 and ≥ 46.8	5.5	< 14.7	0.5



Appendix: NSPF High Sch. Point Tables

HS Science PAT

Rate (%)	Points	Rate (%)	Points
≥ 54.3	5	< 33.1 and ≥ 29.3	2.5
< 54.3 and ≥ 49	4.5	< 29.3 and ≥ 25.5	2
< 49 and ≥ 43.7	4	< 25.5 and ≥ 21.7	1.5
< 43.7 and ≥ 38.4	3.5	< 21.7 and ≥ 17.9	1
< 38.4 and ≥ 33.1	3	< 17.9	0.5



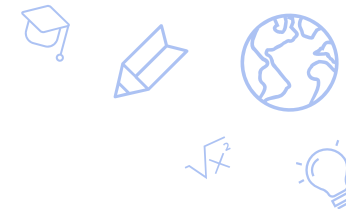
Appendix: NSPF High Sch. Point Tables

HS 4-Year ACGR PAT

Rate (%)	Points	Rate (%)	Points	Rate (%)	Points
≥89.4	25	<83.4 and ≥82.7	16	<74.8 and ≥73.7	7
<89.4 and ≥88.7	24	<82.7 and ≥81.9	15	<73.7 and ≥72.6	6
<88.7 and ≥87.9	23	<81.9 and ≥81.2	14	<72.6 and ≥71.5	5
<87.9 and ≥87.2	22	<81.2 and ≥80.4	13	<71.5 and ≥70.4	4
<87.2 and ≥86.4	21	<80.4 and ≥79.3	12	<70.4 and ≥69.3	3
<86.4 and ≥85.7	20	<79.3 and ≥78.2	11	<69.3 and ≥68.1	2
<85.7 and ≥84.9	19	<78.2 and ≥77.1	10	<68.1 and ≥67	1
<84.9 and ≥84.2	18	<77.1 and ≥75.9	9	<67	0
<84.2 and ≥83.4	17	<75.9 and ≥74.8	8		

HS 5-Year ACGR PAT

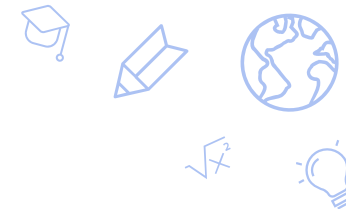
Rate	Points	Rate	Points
≥91.4	5	<79.2 and ≥73.1	2
<91.4 and ≥85.3	4	<73.1 and ≥67	1
<85.3 and ≥79.2	3	<67	0



Appendix: NSPF High Sch. Point Tables

HS WIDA AGP PAT

Rate	Points	Rate	Points
≥ 20	10	< 10 and ≥ 8	5
< 20 and ≥ 18	9	< 8 and ≥ 7	4
< 18 and ≥ 15	8	< 7 and ≥ 6	3
< 15 and ≥ 12	7	< 6 and ≥ 5	2
< 12 and ≥ 10	6	< 5	1



Appendix: NSPF High Sch. Point Tables

HS Post-Secondary Preparation Participation PAT

Rate	Points	Rate	Points	Rate	Points
≥74.5	10	<65.2 and ≥63.7	6.5	<54.4 and ≥52.8	3
<74.5 and ≥73	9.5	<63.7 and ≥62.1	6	<52.8 and ≥51.3	2.5
<73 and ≥71.4	9	<62.1 and ≥60.6	5.5	<51.3 and ≥49.7	2
<71.4 and ≥69.9	8.5	<60.6 and ≥59	5	<49.7 and ≥48.2	1.5
<69.9 and ≥68.3	8	<59 and ≥57.5	4.5	<48.2 and ≥46.6	1
<68.3 and ≥66.8	7.5	<57.5 and ≥55.9	4	<46.6	0.5
<66.8 and ≥65.2	7	<55.9 and ≥54.4	3.5		

HS Post-Secondary Preparation Completion PAT

Rate	Points	Rate	Points	Rate	Points
≥55.8	10	<38.7 and ≥35.9	6.5	<18.8 and ≥15.9	3
<55.8 and ≥53	9.5	<35.9 and ≥33	6	<15.9 and ≥13.1	2.5
<53 and ≥50.1	9	<33 and ≥30.2	5.5	<13.1 and ≥10.2	2
<50.1 and ≥47.3	8.5	<30.2 and ≥27.3	5	<10.2 and ≥7.3	1.5
<47.3 and ≥44.4	8	<27.3 and ≥24.5	4.5	<7.3 and ≥4.5	1
<44.4 and ≥41.6	7.5	<24.5 and ≥21.6	4	<4.5	0.5
<41.6 and ≥38.7	7	<21.6 and ≥18.8	3.5		



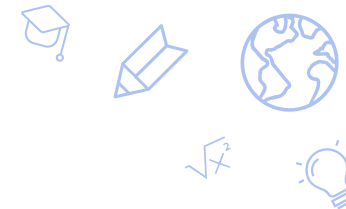
Appendix: NSPF High Sch. Point Tables

HS Advanced/CCR Diploma PAT

Rate	Points
≥53.3	5
<53.3 and ≥39.4	4
<39.4 and ≥25.5	3
<25.5 and ≥11.5	2
<11.5	1

HS Chronic Absenteeism PAT

Rate	Points	Rate	Points	Rate	Points
<5	5	≥11 and <13	3	≥19 and <21	1
≥5 and <7	4.5	≥13 and <15	2.5	≥21 and <23	0.5
≥7 and <9	4	≥15 and <17	2	≥23	0
≥9 and <11	3.5	≥17 and <19	1.5		



Appendix: NSPF High Sch. Point Tables

HS 9th Grade Credit Sufficiency PAT

Rate	Points
≥ 99.7	5
< 99.7 and ≥ 92.4	4
< 92.4 and ≥ 85.1	3
< 85.1 and ≥ 77.8	2
< 77.8	1