

Nevada Connections Academy ES

Address: 555 Double Eagle Ct Ste 2000, Reno, NV, 89521

Website: <https://www.connectionsacademy.com/nevada-virtual-school>

Oct. 1 2019 Enrollment: 1044

2019-20 Grades Served: K-5

2019-20 NSPF Rating: N/A

Comparison District: State

2019-20 Comparison School: State

2019-20

N/A

An Academic Performance Framework rating cannot be calculated. A 2019-20 NSPF star rating is unavailable, which is required for this rating.

2018-19

N/A

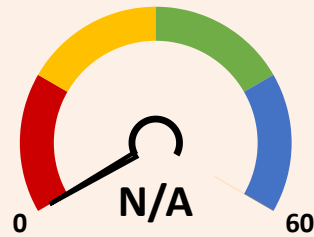
The 2018-19 Framework was not released publicly.

SCORING TABLE

| | | | |
|--------------------------|--|----------------------------------|----------------------------|
| <20 BELOW STANDARD | ≥20 and <50 DOES NOT MEET STANDARD | ≥50 and <80 MEETS STANDARD | ≥80 EXCEEDS STANDARD |
|--------------------------|--|----------------------------------|----------------------------|

NEVADA SCHOOL RATINGS INDICATOR (60 POINTS)

60% of charter school score in Nevada school ratings (NSPF).



This indicator cannot be calculated, as 2019-20 NSPF index scores are unavailable.

GEOGRAPHICAL COMPARISONS INDICATOR (25 POINTS)

Charter school NSPF performance vs. comparison district/school(s).



NSPF SCORE VS. COMPARISON DISTRICT (10 POINTS)

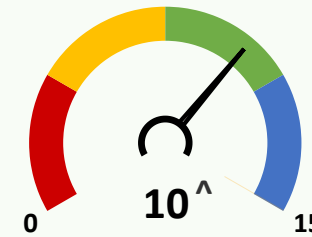


NSPF SCORE VS. COMPARISON SCHOOL (15 POINTS)

This indicator and its measures cannot be calculated, as 2019-20 NSPF index scores are unavailable.

ENROLLMENT DIVERSITY INDICATOR (15 POINTS)

Charter school FRL, IEP, and EL enrollment rates vs. comparison district.



^Bonus Indicator Points: 2

One point per group with at least 25% increase over prior year rate, up to indicator maximum.

10/1/19 CHARTER VS. DISTRICT K-5 ENROLLMENT RATES (5 POINTS EACH)

| | GRP. | CHARTER | DISTRICT | DIFF. | BONUS |
|--|------|-------------|----------|-------|-------|
| | FRL | ≥60 and <70 | 74.2 | ▼ | ✗ |
| | IEP | ≥10 and <15 | 12.8 | ▼ | ✓ |
| | EL | <5 | 18.9 | ▼ | ✓ |

SCHOOL PROGRESS INDICATOR (NO POINTS)

Charter school changes in Math/ELA non-proficiency.

This indicator cannot be calculated, as 2019-20 assessment results are unavailable.