

**Legacy Traditional School Cadence MS**

**Address:** 325 Inflection St, Henderson, NV, 89011

**Website:** <https://cadence.legacytraditional.org/>

**Oct. 1 2020 Enrollment:** 417

**2020-21 Grades Served:** 6-8

**2020-21 NSPF Rating:** N/A

**Comparison District:** Clark

**2020-21 Comparison School:** Brown JHS

2020-21

**N/A**

An Academic Performance Framework rating cannot be calculated. A 2020-21 NSPF star rating is unavailable, which is required for this rating.

2019-20

**N/A**

2019-20 Framework ratings were not calculated.

**SCORING TABLE**

|                          |  |                                  |                            |
|--------------------------|--|----------------------------------|----------------------------|
| <20<br>BELOW<br>STANDARD | ≥20 and <50<br>DOES NOT MEET<br>STANDARD | ≥50 and <80<br>MEETS<br>STANDARD | ≥80<br>EXCEEDS<br>STANDARD |
|--------------------------|--|----------------------------------|----------------------------|

**NEVADA SCHOOL RATINGS INDICATOR (60 POINTS)**

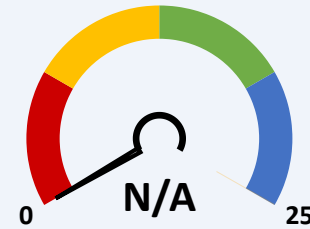
60% of charter school score in Nevada school ratings (NSPF).



This indicator cannot be calculated, as 2020-21 NSPF index scores are unavailable.

**GEOGRAPHICAL COMPARISONS INDICATOR (25 POINTS)**

Charter school NSPF performance vs. comparison district/school(s).



NSPF SCORE VS. COMPARISON DISTRICT (10 POINTS)

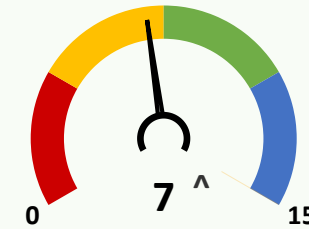


NSPF SCORE VS. COMPARISON SCHOOL (15 POINTS)

This indicator and its measures cannot be calculated, as 2020-21 NSPF index scores are unavailable.

**ENROLLMENT DIVERSITY INDICATOR (15 POINTS)**

Charter school FRL, IEP, and EL enrollment rates vs. comparison district.



**^Bonus Indicator Points: 1**

One point per group with at least 25% increase over prior year rate, up to indicator maximum.

**10/1/20 CHARTER VS. DISTRICT 6-8 ENROLLMENT RATES (5 POINTS EACH)**

|  | GRP. | CHARTER     | DISTRICT | DIFF. | BONUS |
|--|------|-------------|----------|-------|-------|
|  | FRL  | ≥40 and <50 | 89.2     | ▼     | ✓     |
|  | IEP  | ≥5 and <10  | 11.8     | ▼     | ✗     |
|  | EL   | <5          | 13       | ▼     | ✗     |

**SCHOOL PROGRESS INDICATOR (NO POINTS)**

Charter school changes in Math/ELA non-proficiency.

**Non-Proficiency Rates (%)**

| 2019-20 | 2020-21 |                            |
|---------|---------|----------------------------|
| N/A     | 68.4    | Lacks 2 years of Math data |
| N/A     | 37.1    | Lacks 2 years of ELA data  |