

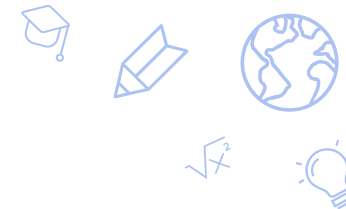


Explore Academy - Las Vegas

Ali Taylor, Principal

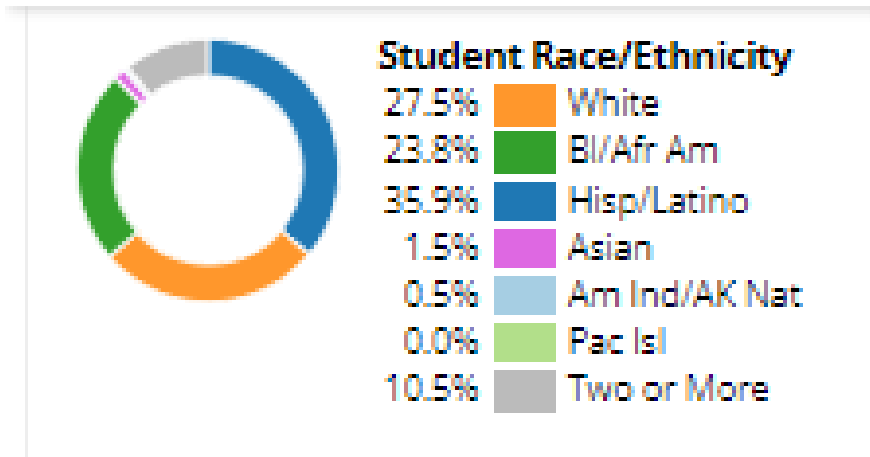


School Information



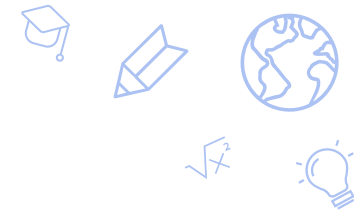
- Grade levels served: 6-12
The school has added a grade level each year, with 12th grade added this school year (2023-2024).
- Middle School (grades 6-8) received a 1-star rating.

Student Population Metrics



Other Relevant Characteristics

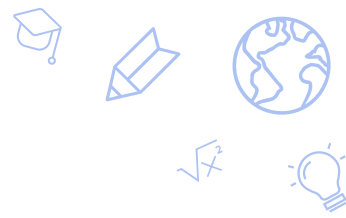
- Title 1 School / Economically Disadvantaged
- High Mobility / Transient Population
- 16% Students on IEPs (higher than SPCSA, state, and surrounding district)
- Change in school leadership for 23-24



Academic Goal(s)

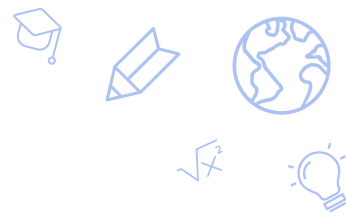
- Increase proficiency in SBAC ELA by 15 points or 25%
- Increase proficiency in SBAC math by 15 points or 55%
- Increase participation in state assessments to 95% or higher
- Increase English Learner progress by 50%
- Increase student attendance rate by 35%
- Increase student engagement as measured via a score of 4 points or higher on student surveys

Action Steps



- Addition of structured intervention via IXL in FLEX periods
 - 60 minutes weekly (30 min Math, 30 min ELA)
 - Program available outside of school
- Spiral Remediation into each content area
- Rigorous State standards aligned Core Assessments
 - Testing environment mimics SBAC
- Monthly Data Analysis and Action Planning
- Interim CERT Assessments
 - Aligned to ACT
- Participation on State Assessments
 - Increase family communication at least 2 months before testing with weekly emails and Family Forums.

Action Steps (continued)



- **Weekly Professional Development for Staff**
 - Analyzing weekly data trends to create action plans to support students
- **Restructured English Language Support Class**
 - Focus on practicing skills intentionally in all classes
 - IXL to practice reading and writing
 - Individualized plans for each student to work on their specific language acquisition areas
- **Strengthened Restorative Discipline Plan**
 - Hired Dean of Students
 - Transparency in expectations and consequences with Discipline Matrix
 - Focuses on proactive practices
 - Incorporates community partners and families
 - Applied for Grant
- **Transportation application approved for three bus routes**
 - Removes barrier to attending school - which was identified by our families as an issue to getting students to school

Questions?

