



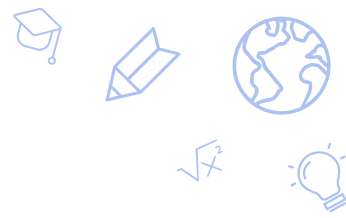
Agenda Item #13: 2023-24 School Year Enrollment Data



December 8, 2023

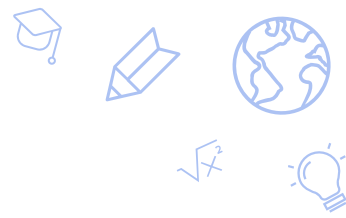


OUTLINE



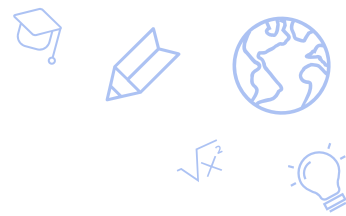
- Overview of Annual Nevada Enrollment Data
- SPCSA Enrollment Highlights
- SPCSA Total Enrollment Trend
- Enrollment Across Nevada
- SPCSA Student Group Enrollment Trends
- SPCSA vs. State Student Group Enrollment
- Enrollment for Recently Opened SPCSA Schools
- Conclusions

Annual Nevada Enrollment Data: “Validation Day”



- Annually, around October 1st, the Nevada Department of Education (NDE) takes a snapshot of student enrollment across the state.
- These student-level enrollment data contain demographic information, including but not limited to race/ethnicity, free or reduced-price lunch (FRL) eligibility, whether the student has an individual education program (IEP), and English Language Learner (ELL) status.
- Data are carefully validated by LEAs and charter schools.
- These enrollment data are used by the NDE, SPCSA, LEAs, charter schools, and other stakeholders for official federal and state reporting and funding.

SPCSA Enrollment Highlights



The official SPCSA enrollment for 2023-24 is **61,883 students.**

The SPCSA remains the **third largest LEA** in Nevada.

Over **45%** of SPCSA students are **enrolled at Title I schools.**

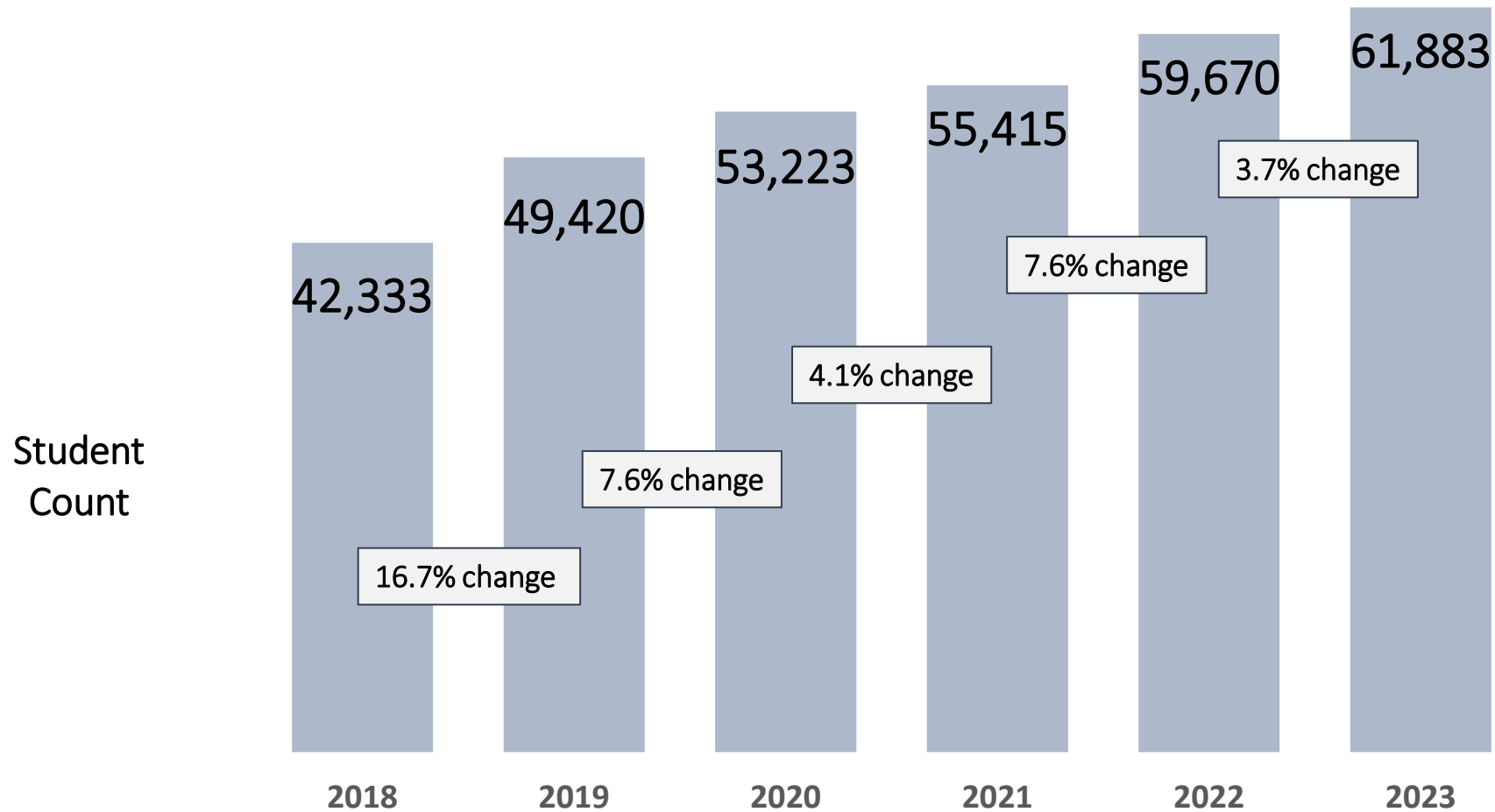
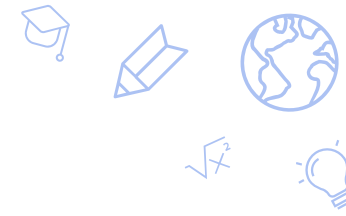
Year over year, SPCSA enrollment rates...

Increased for students identifying as **Asian, Hispanic/Latino, or Two or More Races.**

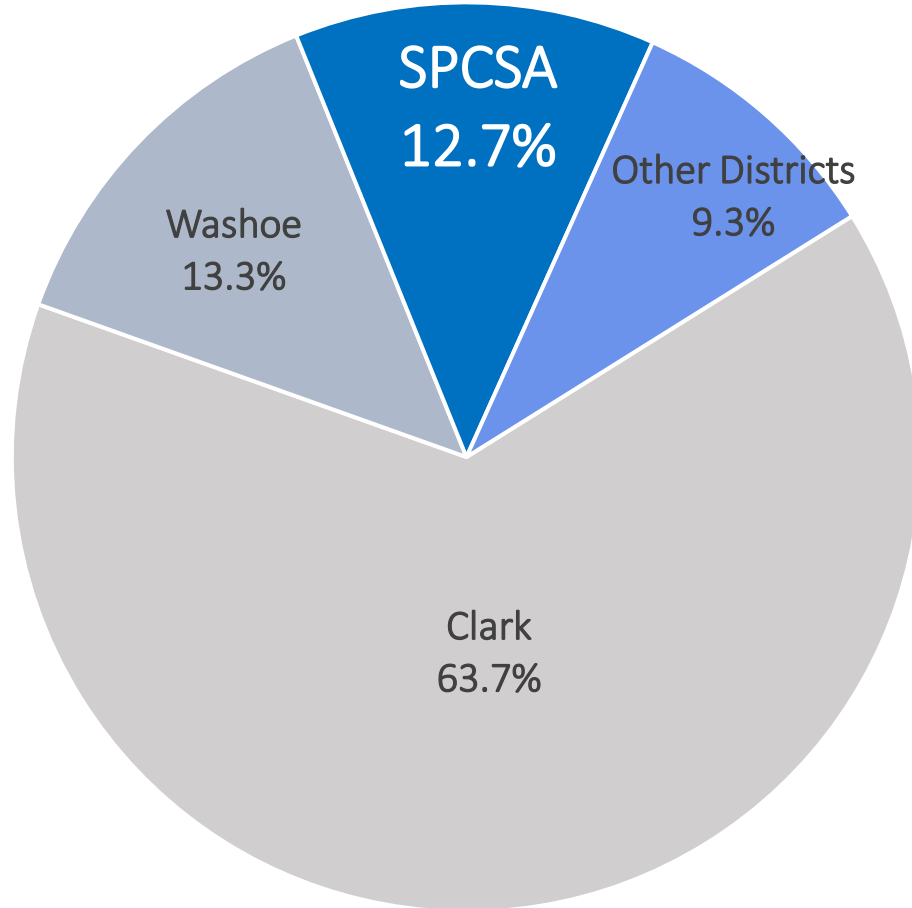
Increased for economically disadvantaged students (**FRL**), students with disabilities (**IEP**), and English Language Learners (**ELL**).

Decreased for students identifying as **White.**

SPCSA Total Enrollment

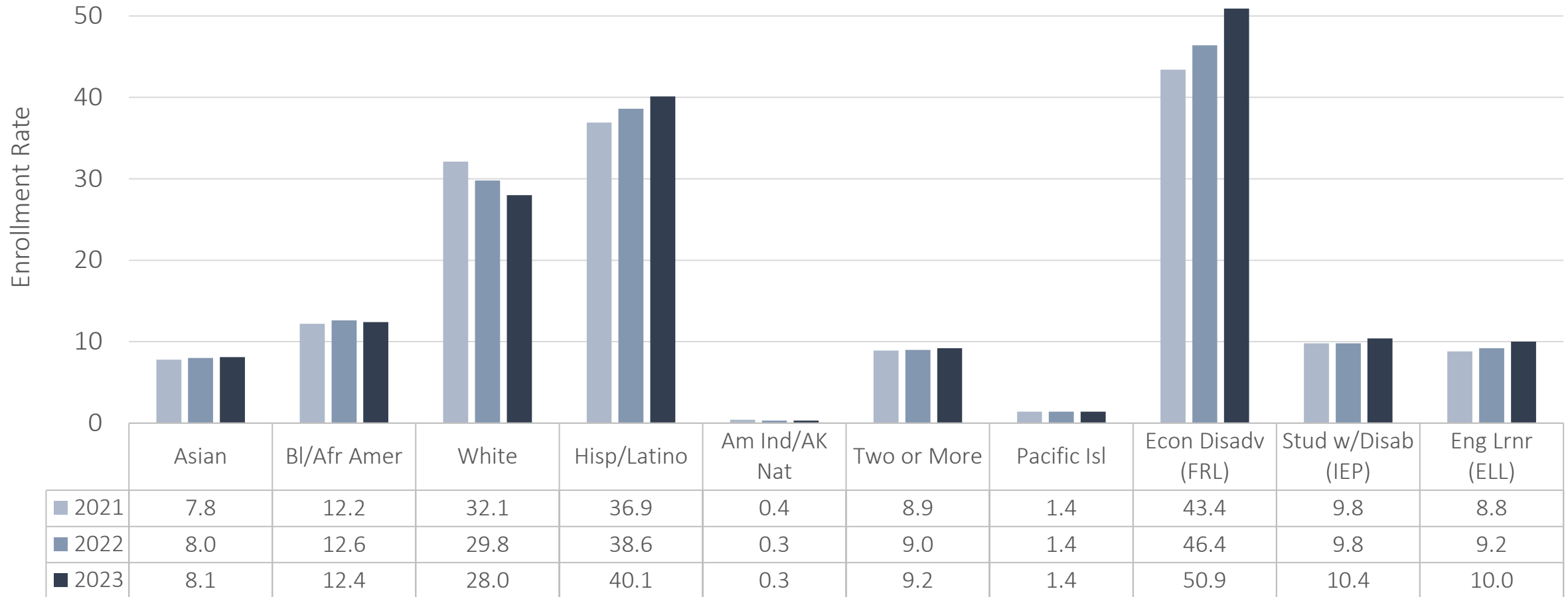


2023 Enrollment Across Nevada

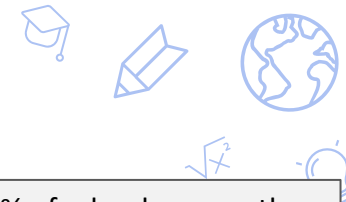


| Entity | # Enrolled | % of State |
|--------------|---------------|--------------|
| STATE | 485570 | - |
| Clark | 309397 | 63.7% |
| Washoe | 64755 | 13.3% |
| SPCSA | 61883 | 12.7% |
| Elko | 9908 | 2.0% |
| Lyon | 9085 | 1.8% |
| Carson City | 7522 | 1.5% |
| Nye | 5682 | 1.1% |
| Douglas | 5036 | 1.0% |
| Humboldt | 3356 | 0.6% |
| Churchill | 3336 | 0.6% |
| White Pine | 1290 | 0.2% |
| Lander | 1077 | 0.2% |
| Lincoln | 959 | 0.1% |
| Pershing | 657 | 0.1% |
| Mineral | 596 | 0.1% |
| Storey | 400 | <0.1% |
| Eureka | 325 | <0.1% |
| University | 171 | <0.1% |
| Esmeralda | 89 | <0.1% |
| Correctional | 46 | <0.1% |

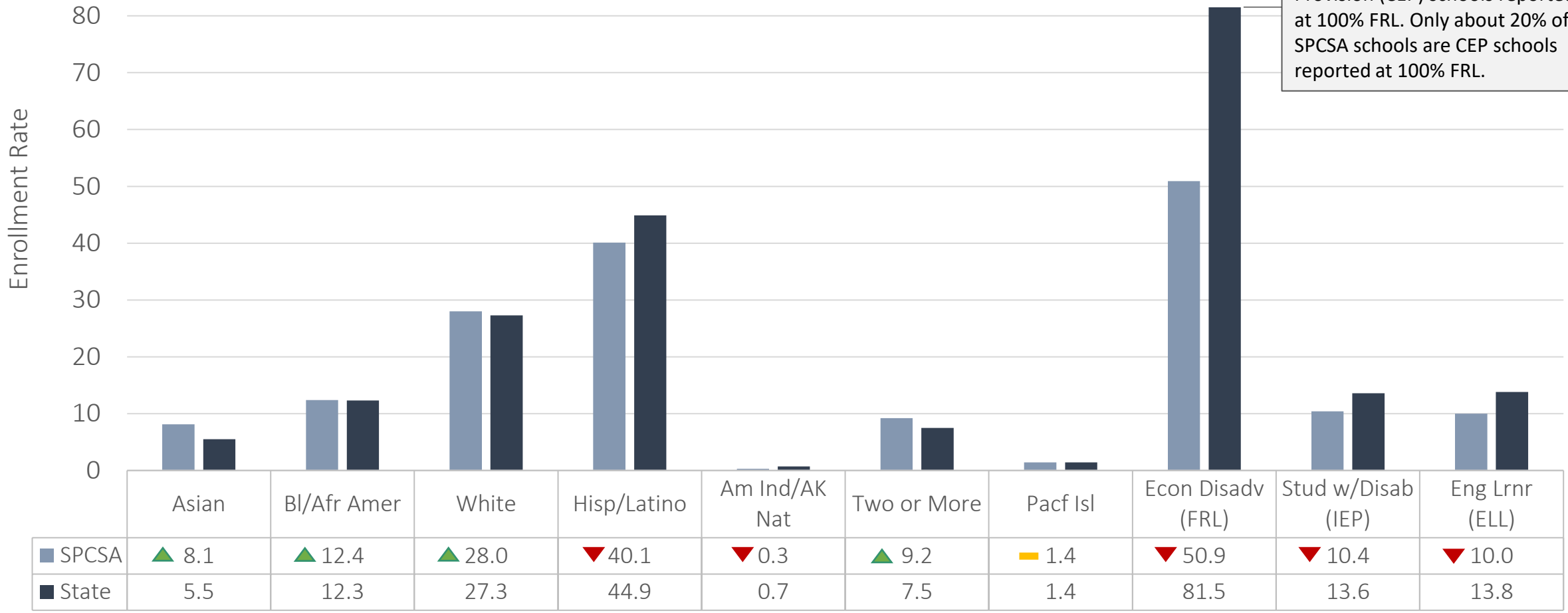
SPCSA Student Group Enrollment Trends



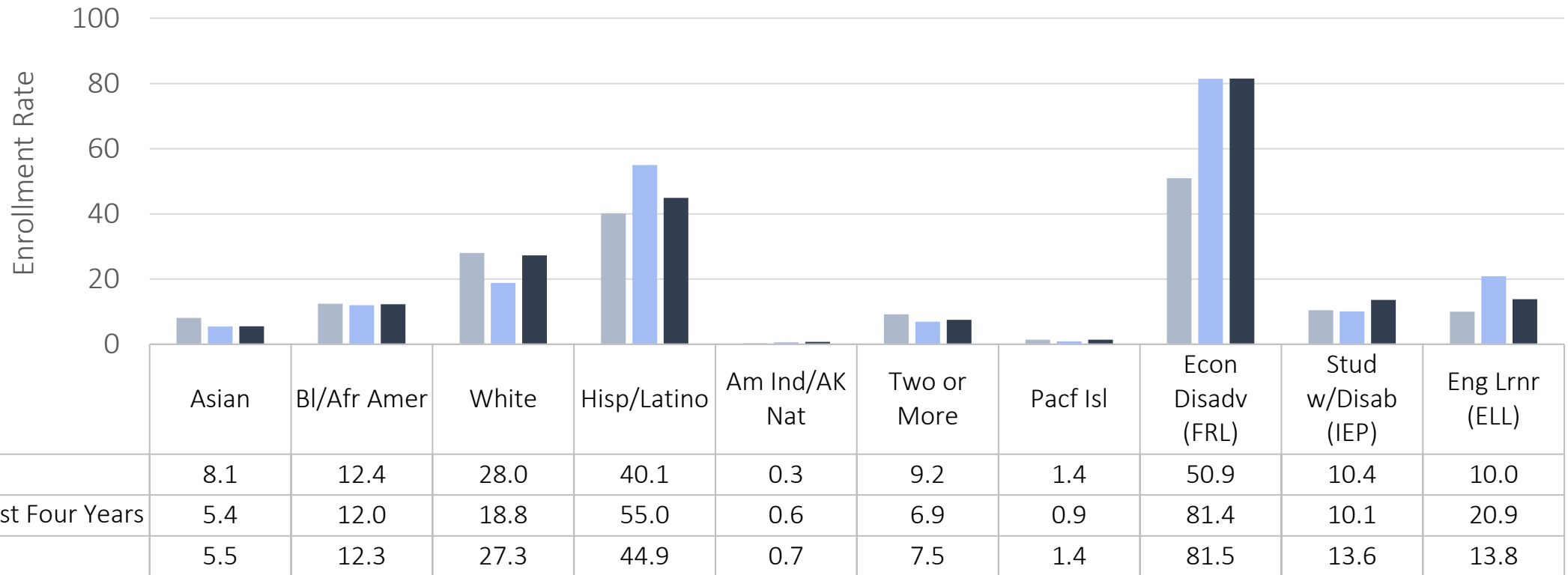
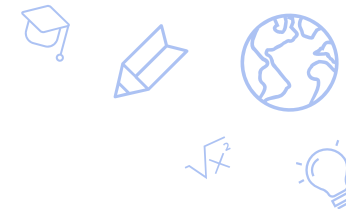
2023 SPCSA vs. State Student Group Enrollment



Note: >60% of schools across the state are Community Eligibility Provision (CEP) schools reported at 100% FRL. Only about 20% of SPCSA schools are CEP schools reported at 100% FRL.



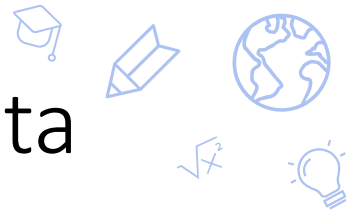
2023 Enrollment for Recently Opened Schools



Schools included in analysis

- Opened 2020-21 SY: Amplus Academy Rainbow, Explore Academy, Mater Academy East, Nevada State High School Downtown Henderson, Nevada State High School Northwest, and Pinecrest Academy Northern Nevada
- Opened 2021-22 SY: CIVICA and TEACH LV.
- Opened 2022-23 SY: Battle Born Academy, Coral Academy of Science Las Vegas Cadence, Nevada State High School North Las Vegas, pilotED Cactus Park, Pinecrest Academy Virtual, Sage Collegiate, Strong Start Academy, and Young Women’s Leadership Academy.
- Opened 2023-24 SY: Eagle NV, Pinecrest Academy Springs, and Southern NV Trades HS.

Takeaways: 2023-24 School Year SPCSA Enrollment Data



- The official SPCSA enrollment for the 2023-24 school year is 61,883 students—a 3.7% increase over the 2022-23 school year.
- The SPCSA remains the third largest local education agency (LEA) in Nevada.
- Over 45% of SPCSA students are enrolled at Title I schools.
- Year over year, SPCSA enrollment rates:
 - Increased for students identifying as Asian, Hispanic/Latino, or Two or More Races.
 - Increased for economically disadvantaged students (FRL), students with disabilities (IEPs) and English Language Learners (ELLs).
 - Decreased for students identifying as White.
- The SPCSA aims to serve a population representative of the state and the districts its schools are located within.
 - Despite year over year rate increases, the SPCSA continues to serve proportionately fewer students identifying as Hispanic/Latino, economically disadvantaged students (FRL), students with disabilities (IEP), and English Language Learners (ELLs) than the state.
 - However, as evidenced by new school enrollment data, the SPCSA is making progress toward that goal.
 - Additionally, various historically underperforming student groups served by SPCSA schools continue to outperform their state peers in various measures of academic performance.

Thank you!

charterschools.nv.gov

