



SPCSA

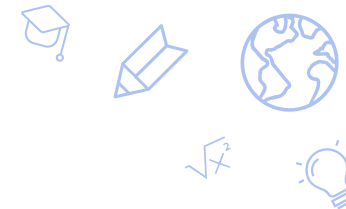
School Year 2022-23

Student Enrollment



November 18, 2022

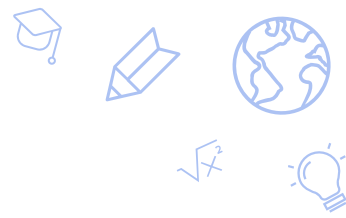




OUTLINE

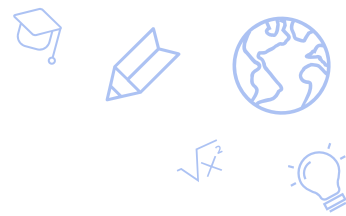
- Overview of Annual Nevada Enrollment Data
- SPCSA Enrollment Highlights
- SPCSA Total Enrollment Trend (2018 to 2022)
- Enrollment Across Nevada (2022)
- SPCSA Student Group Enrollment Trends (2020 to 2022)
- SPCSA vs. State Student Group Enrollment (2022)
- SPCSA Enrollment vs. Local School Districts (2022)
- Enrollment for Recently Opened SPCSA Schools (2022)
- Conclusions

Annual Nevada Enrollment Data: “Validation Day”



- Annually, around October 1st, the Nevada Department of Education (NDE) takes a snapshot of student enrollment across the state.
- These student-level enrollment data contain demographic information, including but not limited to race/ethnicity, free or reduced-price lunch (FRL) eligibility, whether the student has an individual education program (IEP), and English Language Learner (ELL) status.
- Data are carefully validated by LEAs and charter schools.
- These enrollment data are used by the NDE, SPCSA, LEAs, charter schools, and other stakeholders for official federal and state reporting and funding.

SPCSA Enrollment Highlights



The official SPCSA enrollment for 2022-23 is **59,670 students.**

The SPCSA remains the **third largest LEA** in Nevada.

Over **40%** of SPCSA students are **enrolled at Title I schools.**

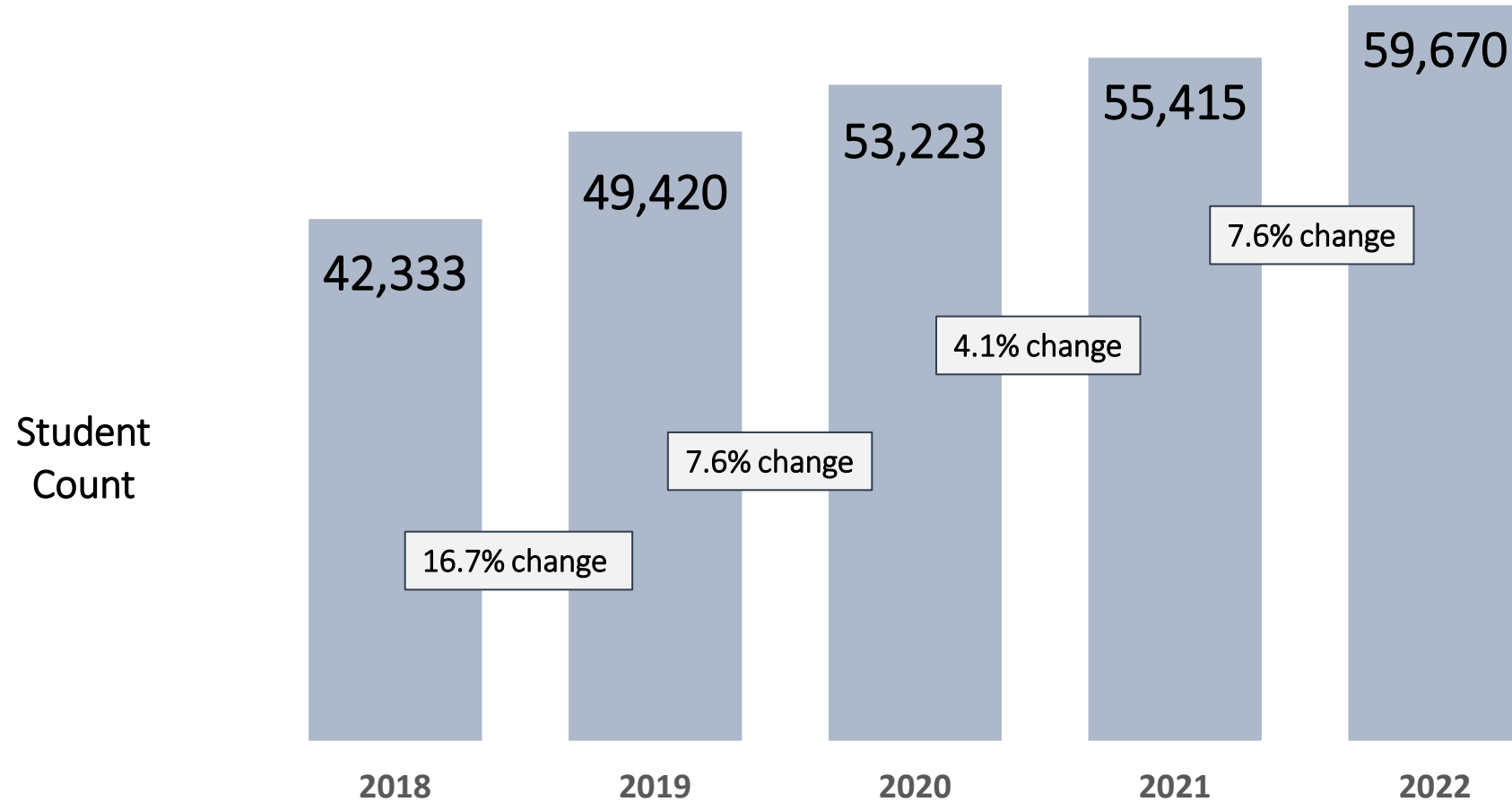
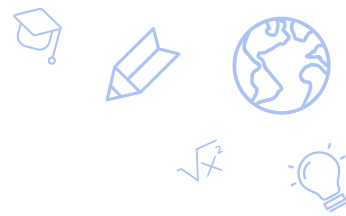
Year over year, SPCSA enrollment rates...

Increased for students identifying as **Asian, Black/African American, Hispanic/Latino, or Two or More Races.**

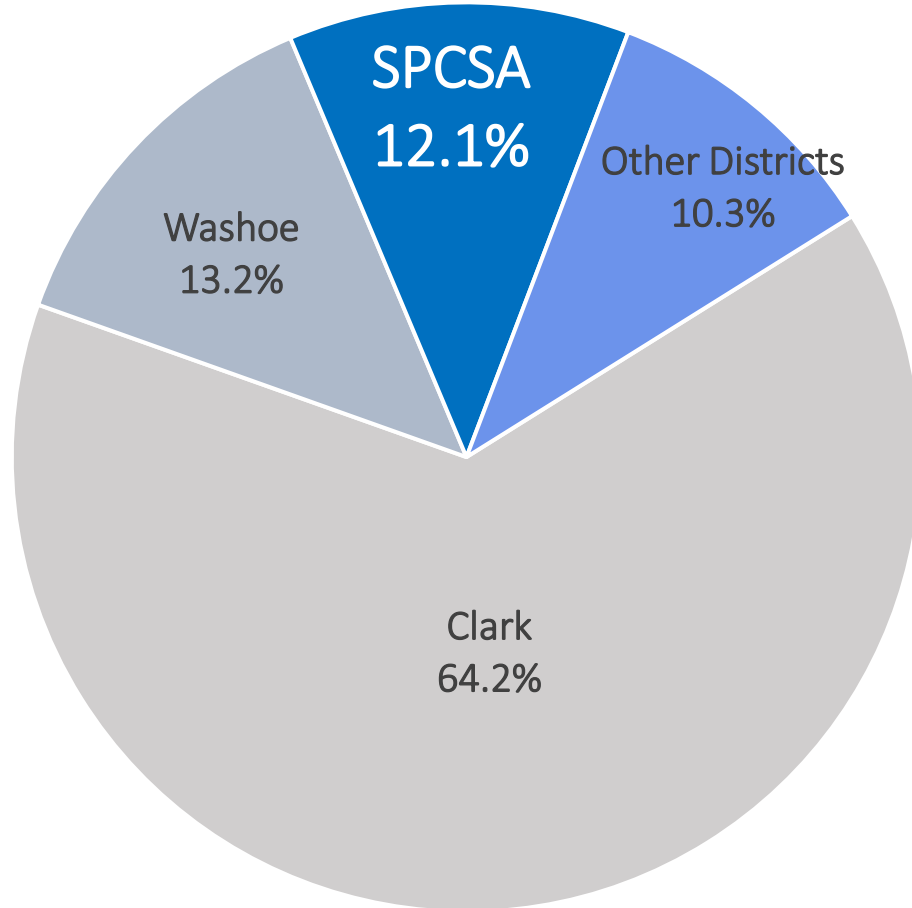
Increased for economically disadvantaged students (**FRL**) and students with disabilities (**IEP**).

Decreased for students identifying as **White.**

SPCSA Total Enrollment

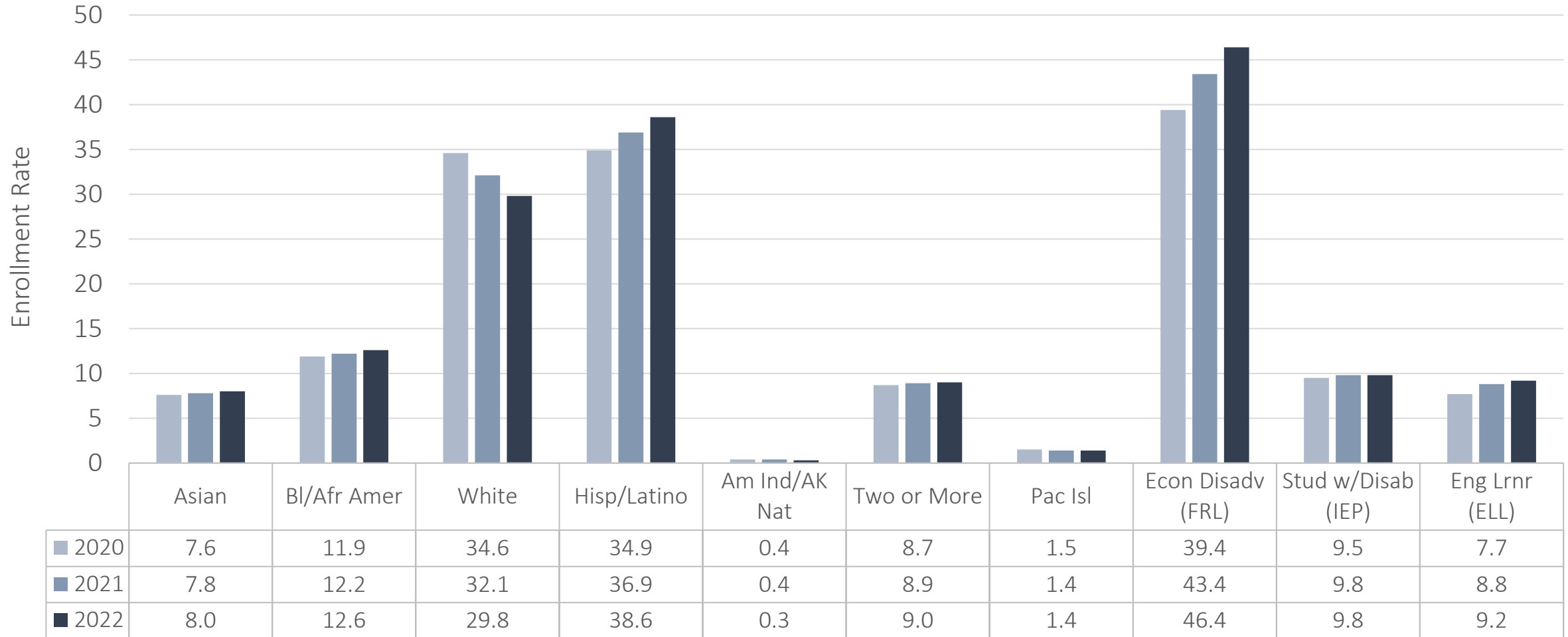


2022 Enrollment Across Nevada

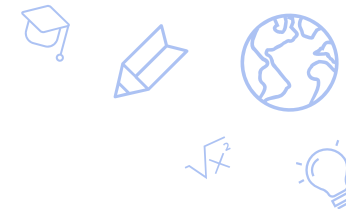


Entity	# Enrolled	% of State
STATE	489597	-
Clark	314372	64.2%
Washoe	64990	13.2%
SPCSA	59670	12.1%
Elko	10171	2.0%
Lyon	9085	1.8%
Carson City	7722	1.5%
Nye	5873	1.1%
Douglas	5331	1.0%
Churchill	3394	0.6%
Humboldt	3329	0.6%
White Pine	1322	0.2%
Lander	1059	0.2%
Lincoln	958	0.1%
Pershing	684	0.1%
Mineral	613	0.1%
Storey	416	<0.1%
Eureka	333	<0.1%
University	163	<0.1%
Esmeralda	88	<0.1%
Correctional	24	<0.1%

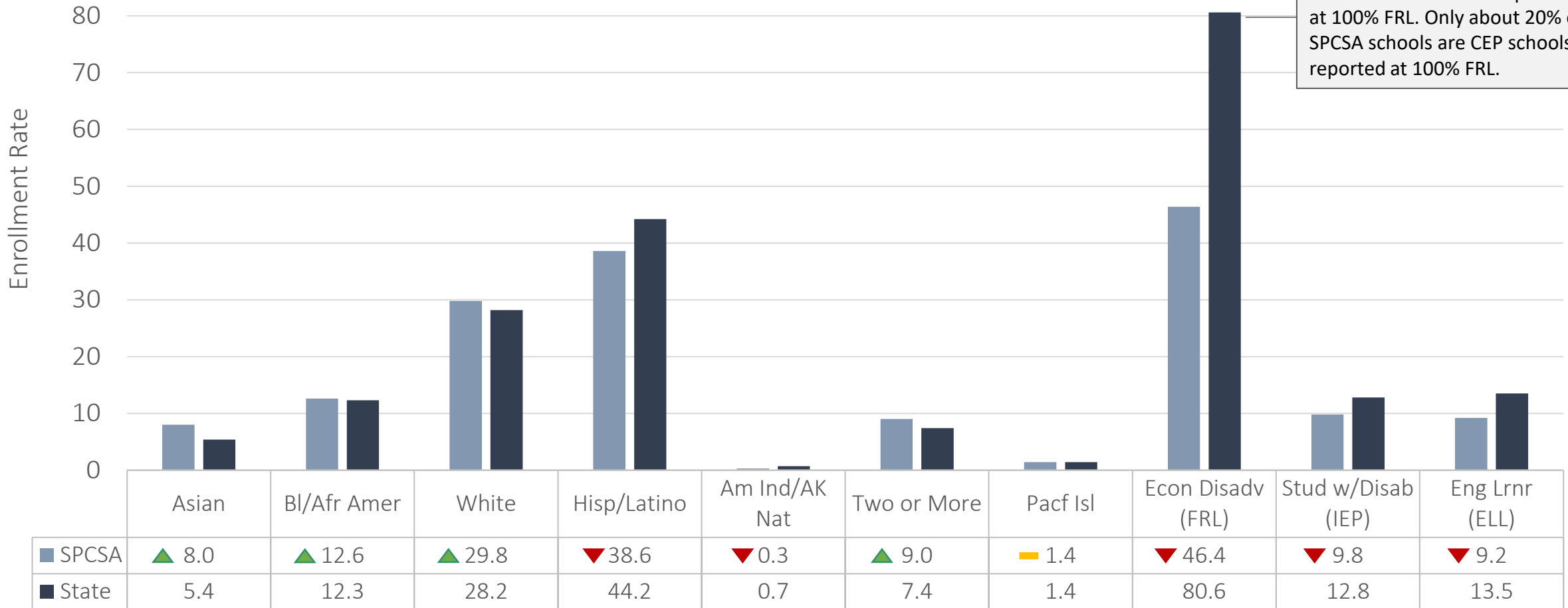
SPCSA Student Group Enrollment Trends



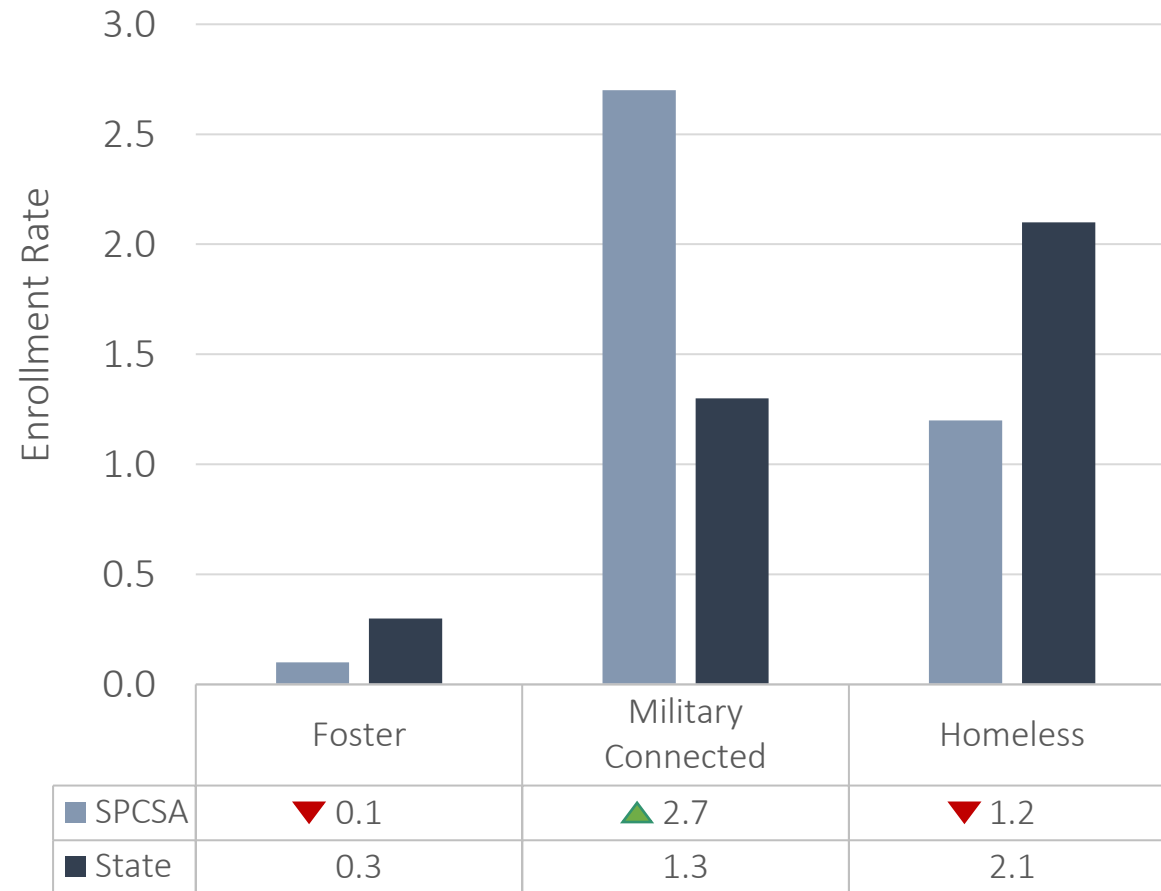
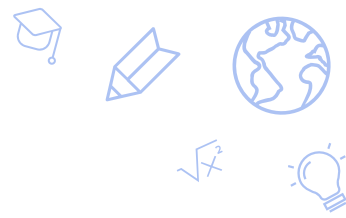
2022 SPCSA vs. State Student Group Enrollment



Note: 64% of schools across the state are CEP schools reported at 100% FRL. Only about 20% of SPCSA schools are CEP schools reported at 100% FRL.

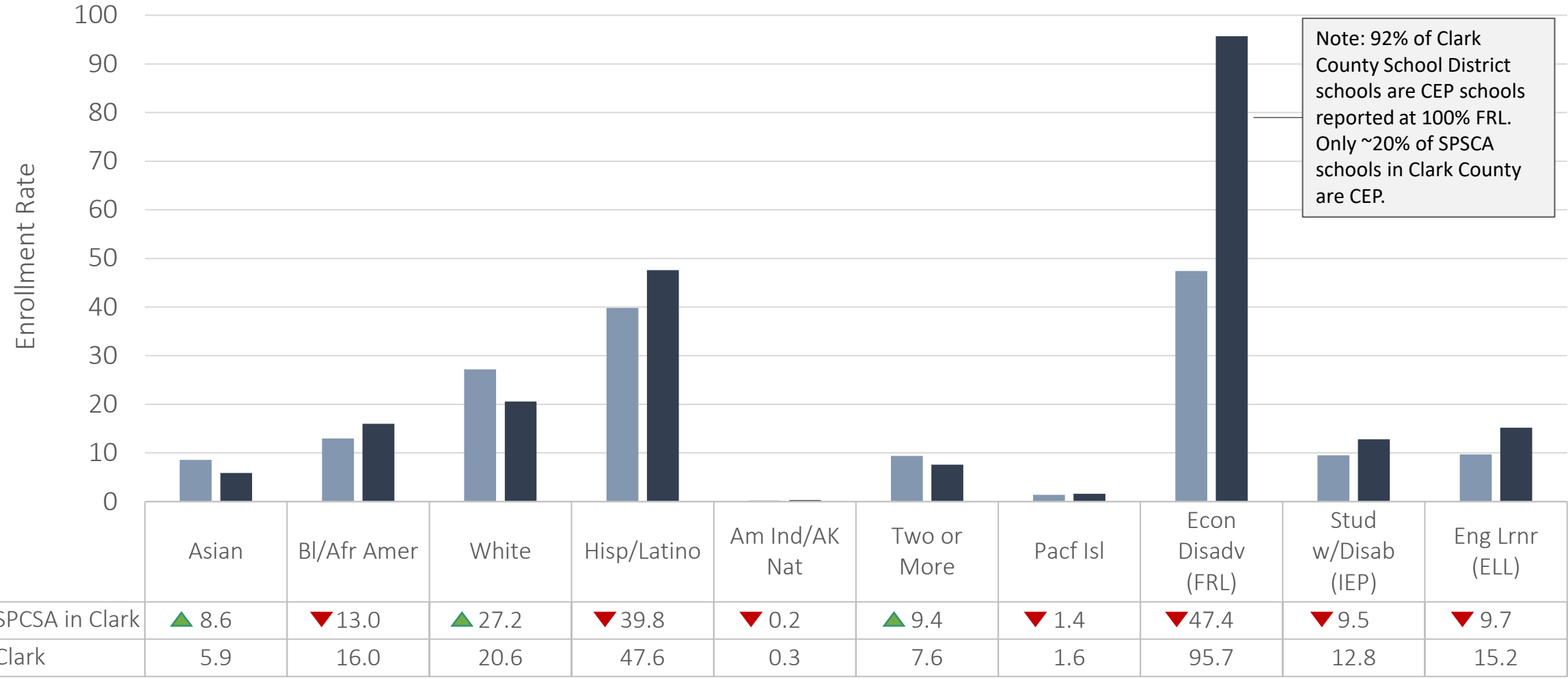
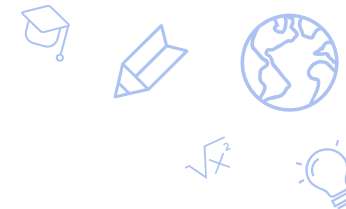


2022 SPCSA vs. State Student Group Enrollment

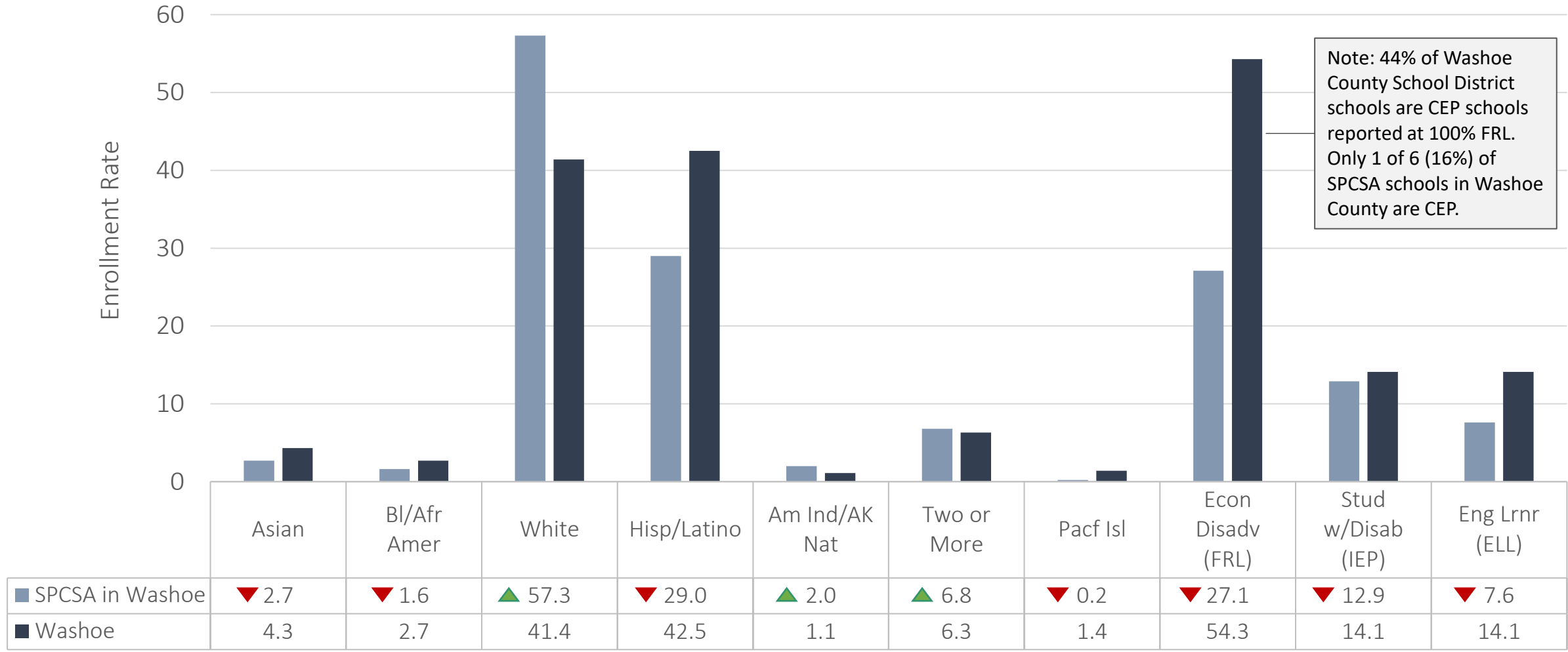
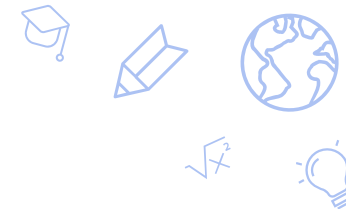


Enrollment rates are from the Nevada Department of Education (NDE) 2022 validation day. Up triangles (green) signify a rate above the state group, while down triangles (red) signify a rate below the state group.

2022 SPCSA Schools in Clark vs. Clark

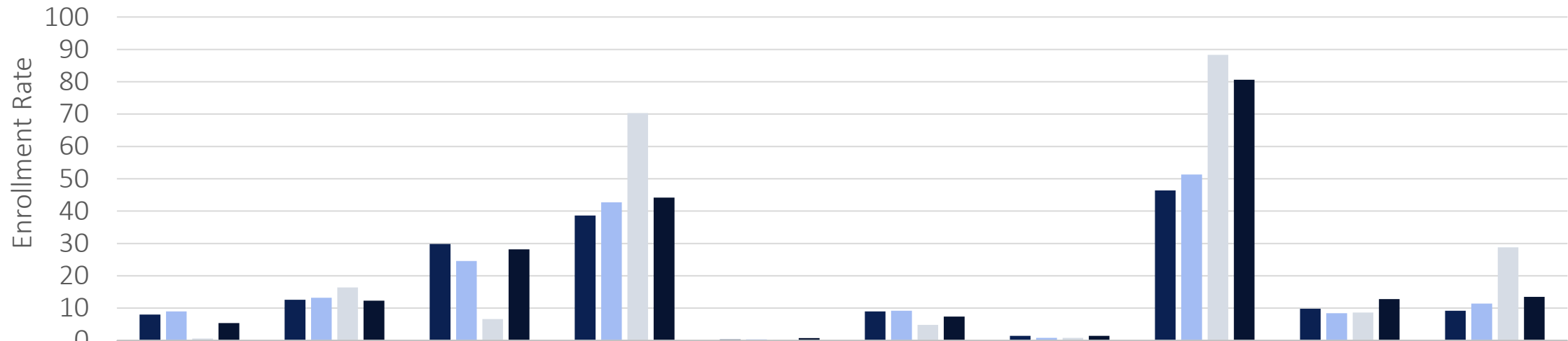


2022 SPCSA Schools in Washoe vs. Washoe



Note: 44% of Washoe County School District schools are CEP schools reported at 100% FRL. Only 1 of 6 (16%) of SPCSA schools in Washoe County are CEP.

2022 Enrollment for Recently Opened Schools



	Asian	BI/Afr Amer	White	Hisp/Latino	Am Ind/AK Nat	Two or More	Pacf Isl	Econ Disadv (FRL)	Stud w/Disab (IEP)	Eng Lrnr (ELL)
■ SPCSA	8.0	12.6	29.8	38.6	0.3	9.0	1.4	46.4	9.8	9.2
■ 2022 New Schools	9.0	13.2	24.6	42.7	0.3	9.2	0.8	51.3	8.4	11.4
■ 2021 New Schools	0.6	16.4	6.6	70.3	0.2	4.8	0.8	88.3	8.6	28.8
■ State	5.4	12.3	28.2	44.2	0.7	7.4	1.4	80.6	12.8	13.5

2021 new schools include: CIVICA and TEACH LV.

2022 new schools include: Battle Born Academy, Coral Academy of Science Las Vegas Cadence, Nevada State High School North Las Vegas, pilotED Cactus Park, Pinecrest Virtual, Sage Collegiate, Strong Start Academy, and Young Women’s Leadership Academy.

2022 Enrollment for Recently Opened Schools



Entity	2022 Enrollment	Asian	BI/Afr Amer	White	Hisp/Latino	Amer Ind/AK Native	Two or More	Pacific Islander	Econ Disadv (FRL)	Stud w/Disab (IEP)	Eng Lrn (ELL)
STATE	489597	5.4	12.3	28.2	44.2	0.7	7.4	1.4	80.6	12.8	13.5
SPCSA	59670	8.0	12.6	29.8	38.6	0.3	9.0	1.4	46.4	9.8	9.2
2022 NEW SCHOOL TOTALS	2096	9.0	13.2	24.6	42.7	0.3	9.2	0.8	51.3	8.4	11.4
Battle Born Academy	144	0.0	18.0	14.5	65.9	0.0	1.3	0.0	83.3	15.2	45.8
Coral Academy - Cadence	1346	12.8	8.6	26.5	40.0	0.3	10.7	0.8	40.2	7.5	7.6
NSHS North Las Vegas	67	2.9	28.3	16.4	44.7	1.4	5.9	0.0	50.7	*	*
pilotED Cactus Park	114	0.0	35.0	4.3	52.6	0.0	7.8	0.0	>95	8.7	20.1
Pinecrest Virtual Academy	78	5.1	5.1	29.4	32.0	1.2	21.7	5.1	24.3	12.8	0.0
Sage Collegiate	205	3.4	17.5	43.4	33.6	0.0	0.9	0.9	66.8	9.2	10.2
Strong Start Academy	80	2.5	13.7	6.2	62.5	0.0	13.7	1.2	82.5	*	21.2
Young Women's Leadership Acad.	62	1.6	40.3	8.0	45.1	0.0	4.8	0.0	70.9	*	*
2021 NEW SCHOOL TOTALS	1099	0.6	16.4	6.6	70.3	0.2	4.8	0.8	88.3	8.6	28.8
CIVICA Academy	767	0.5	13.8	3.2	77.8	0.1	4.0	0.3	>95	7.6	34.1
TEACH Las Vegas	332	0.9	22.5	14.4	53.0	0.6	6.6	1.8	61.4	10.8	16.5



Takeaways: 2022 SPCSA Enrollment Data

- The official SPCSA enrollment for the 2022-23 school year is 59,670 students—a 7.6% increase over the 2021-22 school year.
- The SPCSA remains the third largest local education agency (LEA) in Nevada.
- Over 40% of SPCSA students are enrolled at Title I schools.
- Year over year, SPCSA enrollment rates:
 - Increased for students identifying as Asian, Black/African American, Hispanic/Latino, or Two or More Races.
 - Increased for economically disadvantaged students (FRL) and English Language Learners (ELLs).
 - Decreased for students identifying as White.
- The SPCSA aims to serve a population representative of the state and the districts its schools are located within.
 - Despite year over year rate increases, the SPCSA continues to serve proportionately:
 - Fewer students identifying as Hispanic/Latino than the state.
 - Fewer economically disadvantaged students (FRL), students with disabilities (IEP), and English Language Learners (ELLs) than the state.
 - However, as evidenced by new school enrollment data, the SPCSA is making progress toward that goal.

Thank you!

charterschools.nv.gov

