



Academic Performance SPCSA Schools

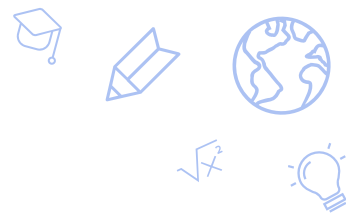
School Year 2020 – 2021



October 1, 2021



DISCLAIMERS

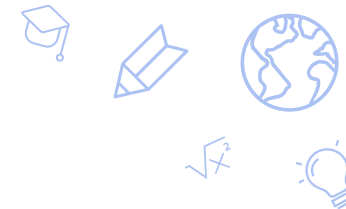


Due to

- The impacts of the COVID-19 pandemic on learning;
- Lower assessment participation rates in the 20-21 school year (federal waivers eliminated the required 95% assessment participation rate); and
- A federal waiver of the annual Nevada school star ratings (NSPF) for the 20-21 school year...

The Nevada Department of Education (NDE) has stated:

- 20-21 SY results do not provide a comprehensive view of Nevada student performance.
- Comparing 20-21 SY data to previous years is not recommended.
- 20-21 SY star rating data are unofficial and informational only.



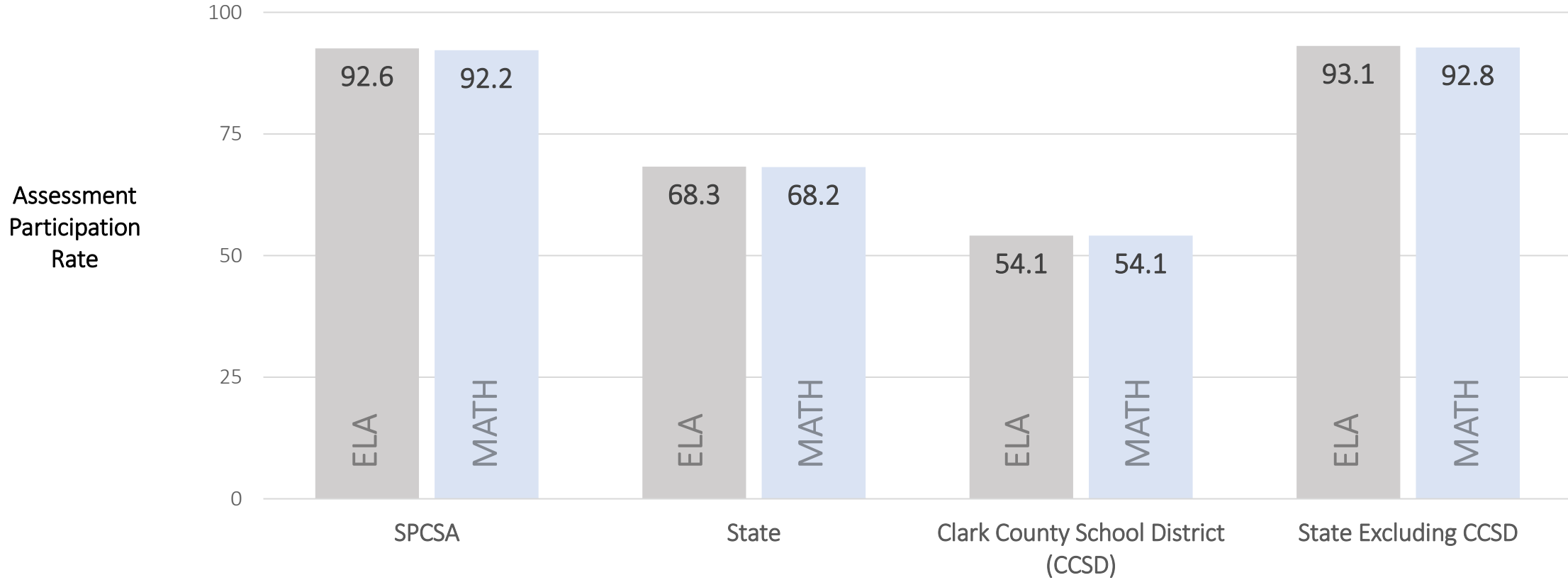
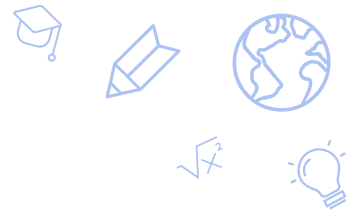
DISCLAIMERS (CONTINUED)

Regarding data we will show on NSPF scores, proficiency, and growth...

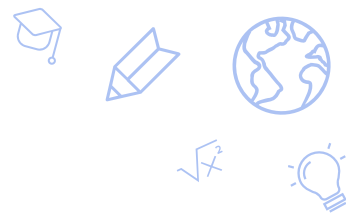
Analyses and inferences that can be made are affected by the following:

- Lower assessment participation means results are not from a representative sample of students.
 - There may be certain trends in the population of students that assessed; therefore, results may not be reflective of Nevada and/or the SPCSA.
- Lower assessment participation means fewer students were included in SY 20-21 growth calculations.
 - NDE calculates growth by comparing a student's growth to that of their "academic peers". Smaller groups of peers may affect growth calculations.
- NDE calculated SY 20-21 growth with non-consecutive years of assessment data (SY 18-19 and SY 20-21) versus the typical two consecutive years.
 - It is unknown how growth results were affected by this method.

SY 20-21 Assessment Participation



OUTLINE



- NSPF Scores
 - SPCSA Schools Meeting 3-Star Threshold: SY 18-19 (official) and 20-21 (unofficial/estimated)
 - SPCSA Score Changes: SY 18-19 (official) and 20-21 (unofficial/estimated)
- Math/ELA Proficiency
 - Overall SPCSA Proficiency, by Level: SY 18-19 (official) and 20-21 (unofficial/informational)
 - SPCSA Student Group Proficiency: SY 18-19 (official) and 20-21 (unofficial/informational)
 - SPCSA Student Group Proficiency vs. State: SY 20-21 (unofficial/informational)
- Math/ELA Growth
 - SPCSA Median Growth Percentiles: SY 18-19 (official) and 20-21 (unofficial/informational)
 - SPCSA Meeting Growth Targets: SY 18-19 (official) and 20-21 (unofficial/informational)

NSPF Refresher



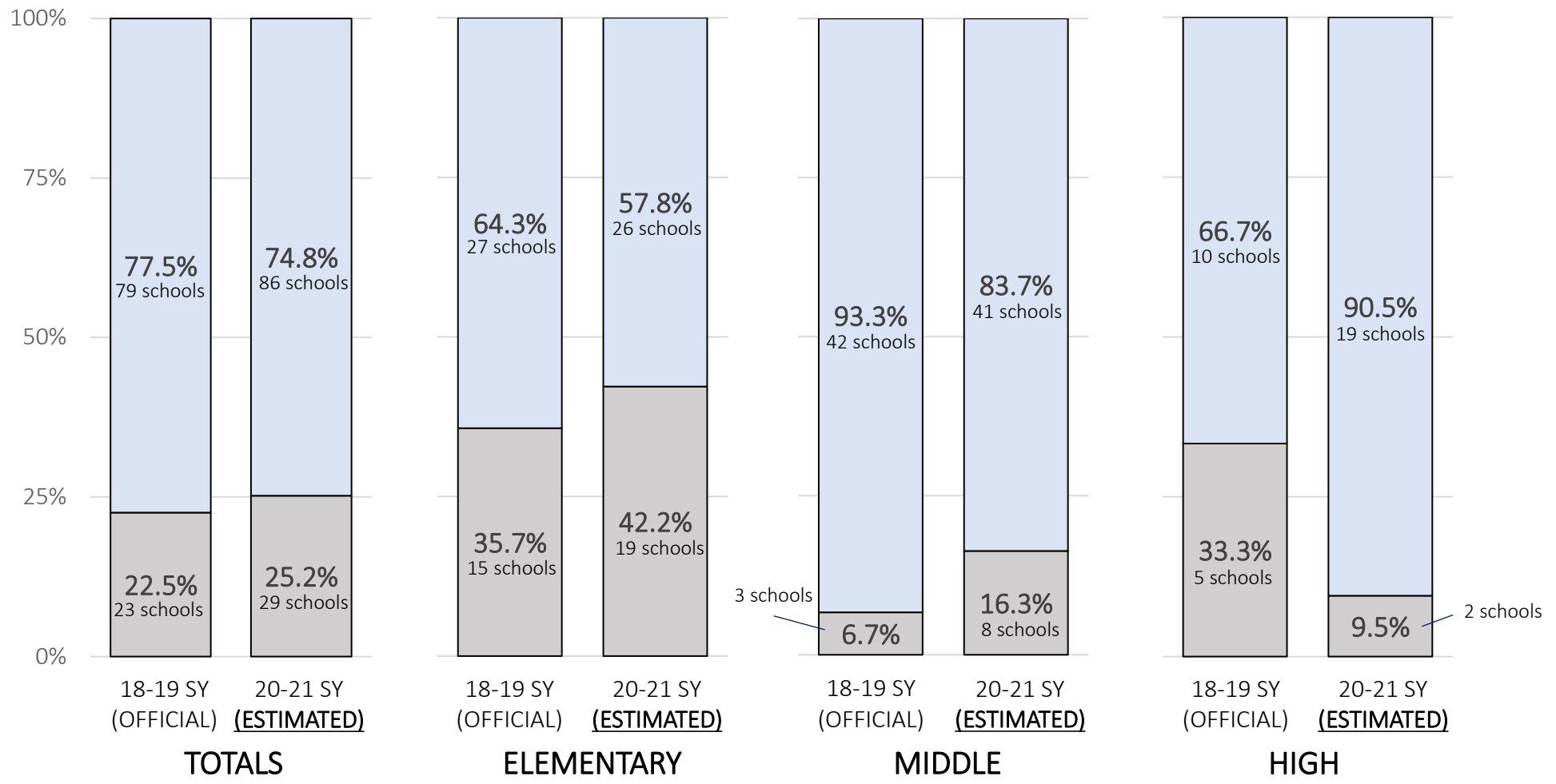
- The federal Every Student Succeeds Act (ESSA) requires states to use an accountability system to annually rate all public schools within that state.
- The Nevada School Performance Framework (NSPF)¹ meets those requirements by issuing an annual index score and corresponding star rating to each school based on its performance across various measures including but not limited to:
 - Math/ELA/Science proficiency (all schools)
 - Math/ELA growth (elementary/middle schools)
 - Graduation rates (high schools)
 - College and career readiness (high schools)
 - Chronic absenteeism (all schools)
- Due to COVID-19, the US Department of Education allowed Nevada to suspend NSPF star ratings for the 2019-20 and 2020-21 school years.
 - The last official star ratings were in the 2018-19 school year.
 - Any NSPF data from the 2019-20 and 2020-21 schools years are unofficial/estimated.

SPCSA NSPF Adjusted Index Scores: SY 18-19 vs 20-21



SCORE ≥ 50
(3-star and higher)

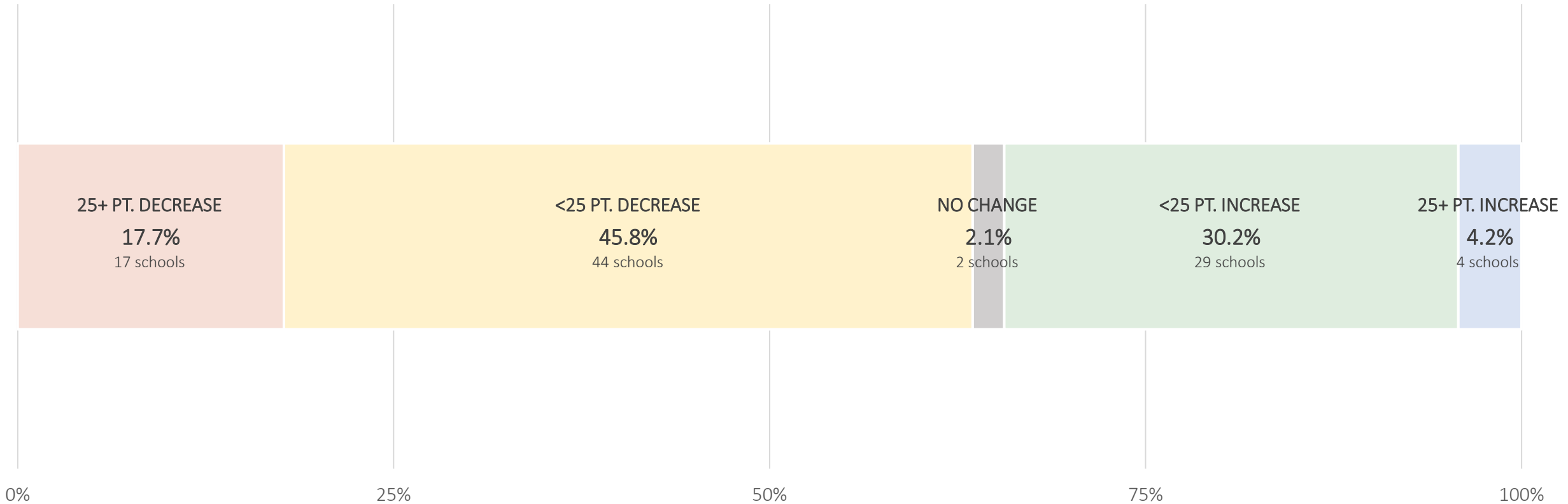
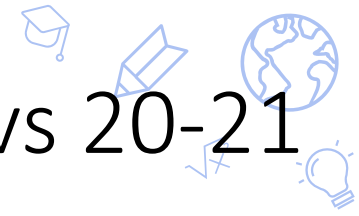
SCORE < 50
(2-star and lower)



**DISCLAIMERS: 20-21 SY NSPF DATA ARE UNOFFICIAL/ESTIMATED.
NDE DISCOURAGES COMPARISON OF SY 20-21 TO SY 18-19.
SEE ASSESSMENT/GROWTH DISCLAIMERS ON PRIOR SLIDES.**

Results calculated by school level (elementary, middle, high). One "school" may contain multiple levels; e.g. Equipo has a middle (Gr6-8) and high school (Gr9-12).

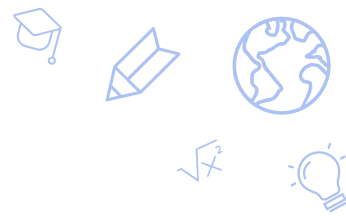
SPCSA NSPF Adjusted Index Score Changes: SY 18-19 vs 20-21



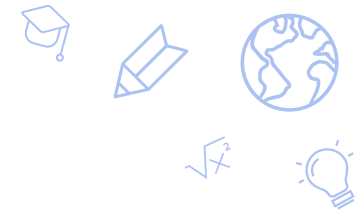
**DISCLAIMERS: 20-21 SY NSPF DATA ARE UNOFFICIAL/ESTIMATED.
NDE DISCOURAGES COMPARISON OF SY 20-21 TO SY 18-19.
SEE ASSESSMENT/GROWTH DISCLAIMERS ON PRIOR SLIDES.**

Results calculated by school level (elementary, middle, high). One "school" may contain multiple levels; e.g. Equipo has a middle (Gr6-8) and high school (Gr9-12).

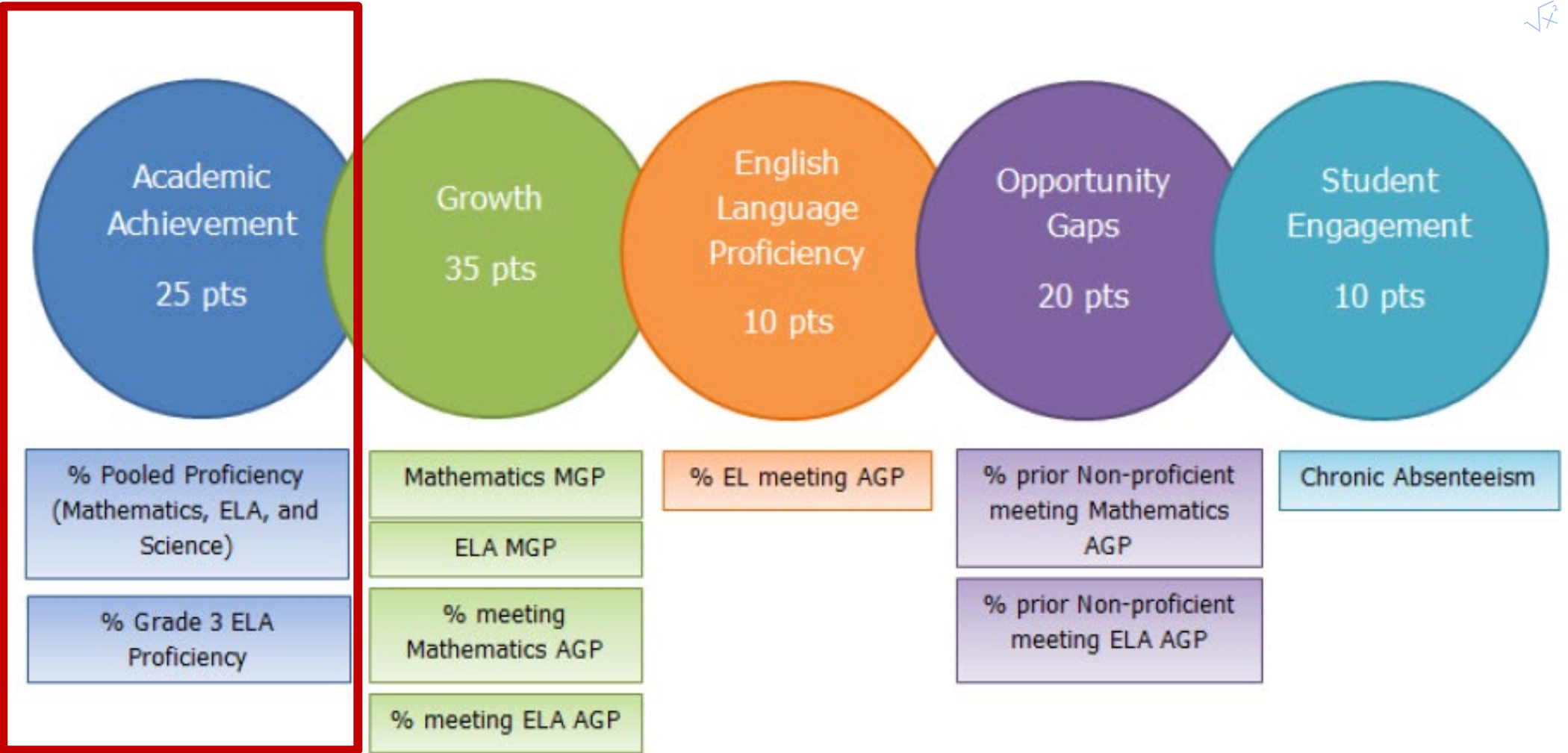
OUTLINE



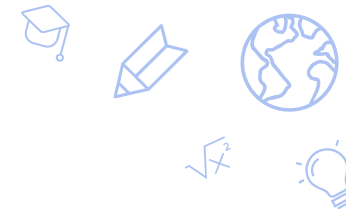
- NSPF Scores
 - SPCSA Schools Meeting 3-Star Threshold: SY 18-19 (official) and 20-21 (unofficial/estimated)
 - SPCSA Score Changes: SY 18-19 (official) and 20-21 (unofficial/estimated)
- **Math/ELA Proficiency**
 - **Overall SPCSA Proficiency, by Level: SY 18-19 (official) and 20-21 (unofficial/informational)**
 - **SPCSA Student Group Proficiency: SY 18-19 (official) and 20-21 (unofficial/informational)**
 - **SPCSA Student Group Proficiency vs. State: SY 20-21 (unofficial/informational)**
- Math/ELA Growth
 - SPCSA Median Growth Percentiles: SY 18-19 (official) and 20-21 (unofficial/informational)
 - SPCSA Meeting Growth Targets: SY 18-19 (official) and 20-21 (unofficial/informational)



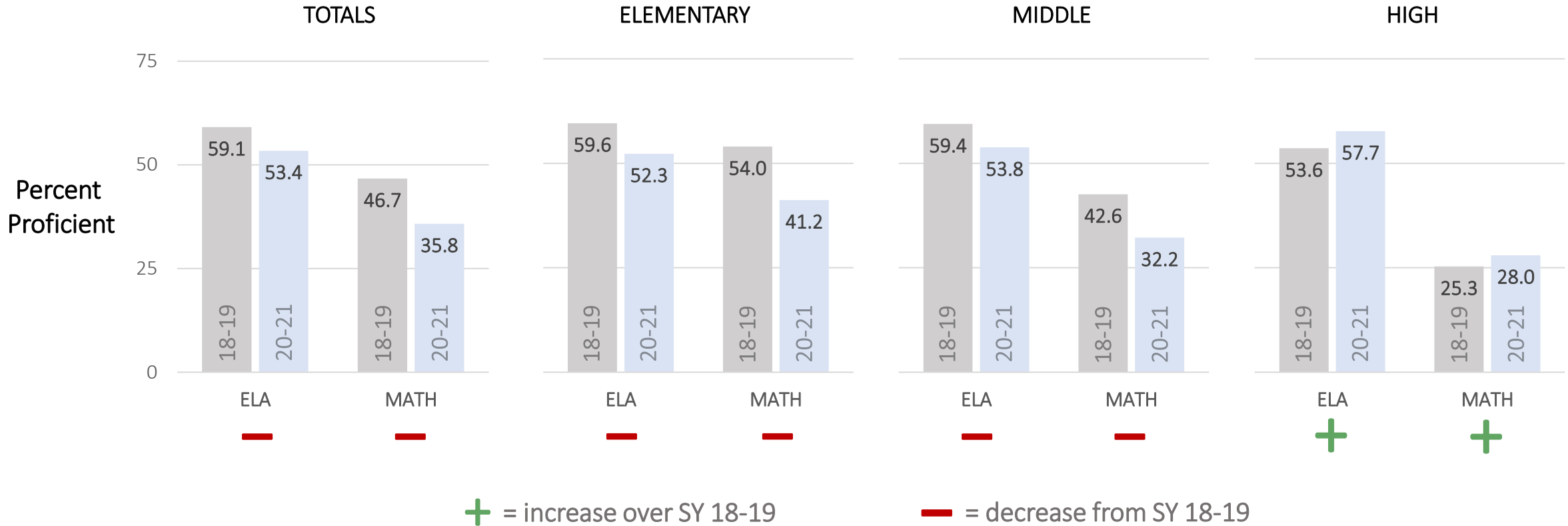
Measures



SPCSA NSPF Proficiency: SY 18-19 vs 20-21



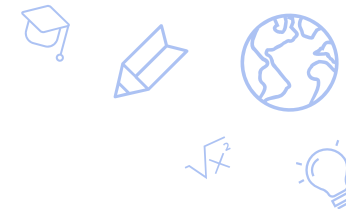
In the NSPF, the NDE calculates Math and ELA proficiency rates from Smarter Balanced (Gr3-8), NAA (Gr 3-8, 11), and ACT assessments (Gr 11). Rates shown below are the percent of students that are in the top two achievement levels (Proficient or Advanced) for the assessments corresponding to their grade level.



**DISCLAIMERS: NDE DISCOURAGES COMPARISON OF SY 20-21 TO SY 18-19.
SEE ASSESSMENT DISCLAIMERS ON PRIOR SLIDES.**

Results calculated by school level (elementary, middle, high). One "school" may contain multiple levels; e.g. Equipo has a middle (Gr6-8) and high school (Gr9-12).

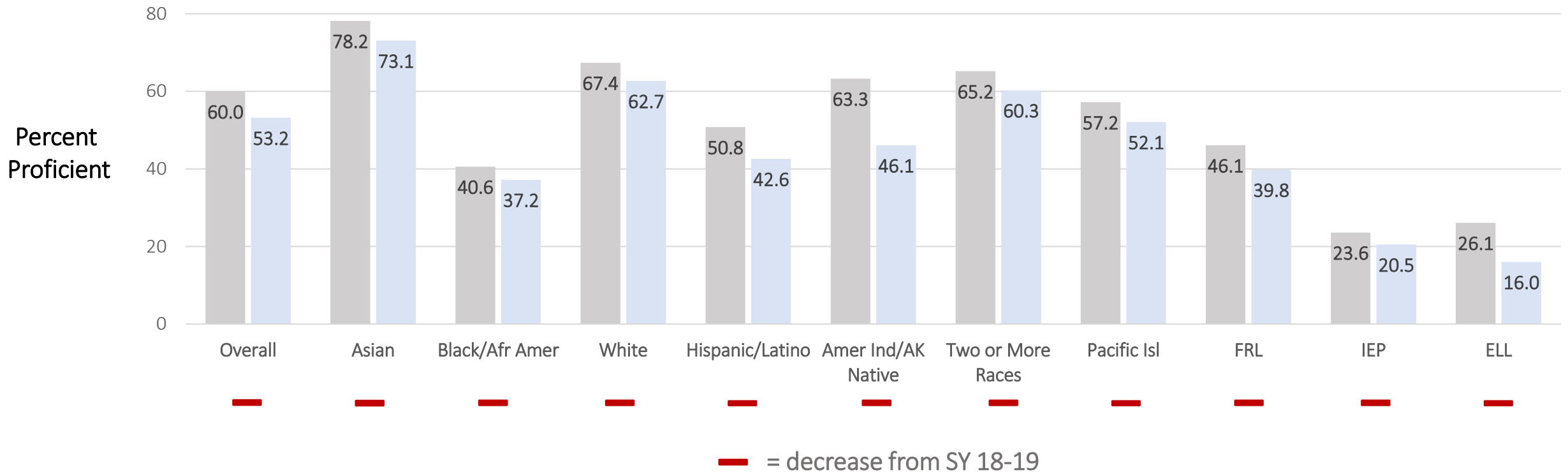
SPCSA Student Group Proficiency: SY 18-19 vs. 20-21



The NDE calculates Math and ELA proficiency rates from Smarter Balanced and ACT assessments. Rates shown below are the percent of students that are in the top two achievement levels (Proficient or Advanced).

ELA Smarter Balanced (Grades 3-8)

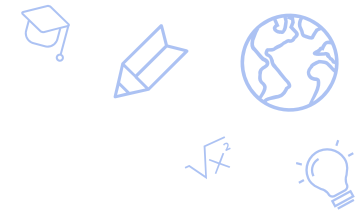
■ 18-19 ■ 20-21



**DISCLAIMERS: NDE DISCOURAGES COMPARISON OF RESULTS.
SEE ASSESSMENT DISCLAIMERS ON PRIOR SLIDES.**

Data from <http://nevadareportcard.nv.gov/>. These proficiency rates use different rules from NSPF calculations, which is why rates may be slightly different on other slides.

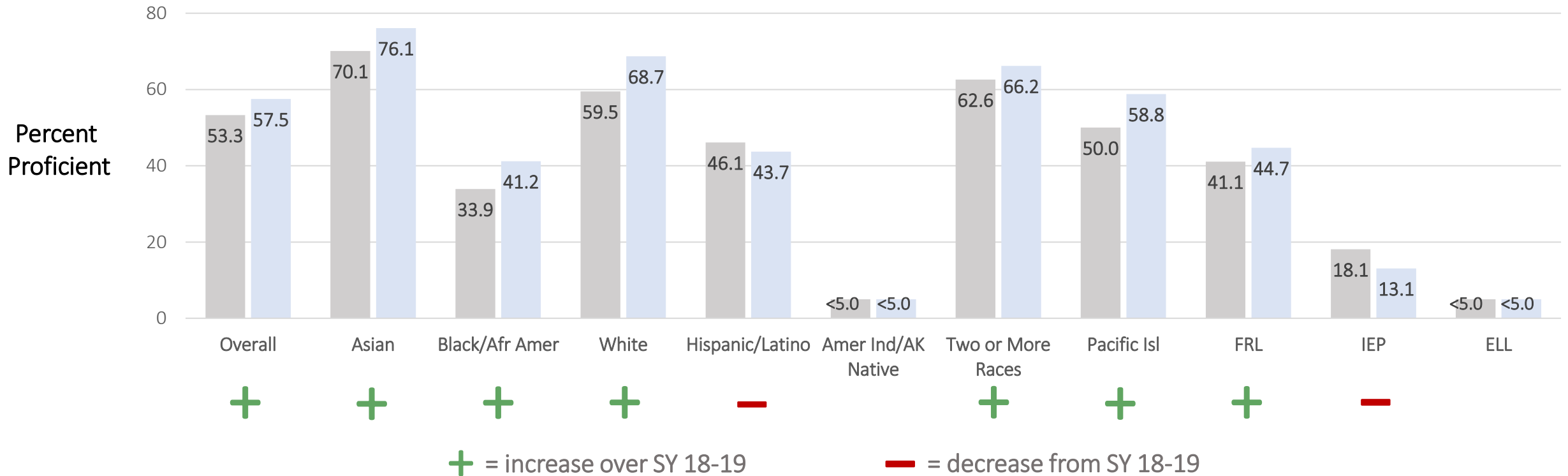
SPCSA Student Group Proficiency: SY 18-19 vs. 20-21



The NDE calculates Math and ELA proficiency rates from Smarter Balanced and ACT assessments. Rates shown below are the percent of students that are in the top two achievement levels (Proficient or Advanced).

ELA ACT (Grade 11)

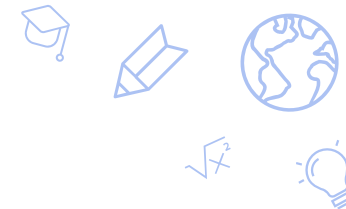
■ 18-19 ■ 20-21



**DISCLAIMERS: NDE DISCOURAGES COMPARISON OF RESULTS.
SEE ASSESSMENT DISCLAIMERS ON PRIOR SLIDES.**

Data from <http://nevadareportcard.nv.gov/>. These proficiency rates use different rules from NSPF calculations, which is why rates may be slightly different on other slides.

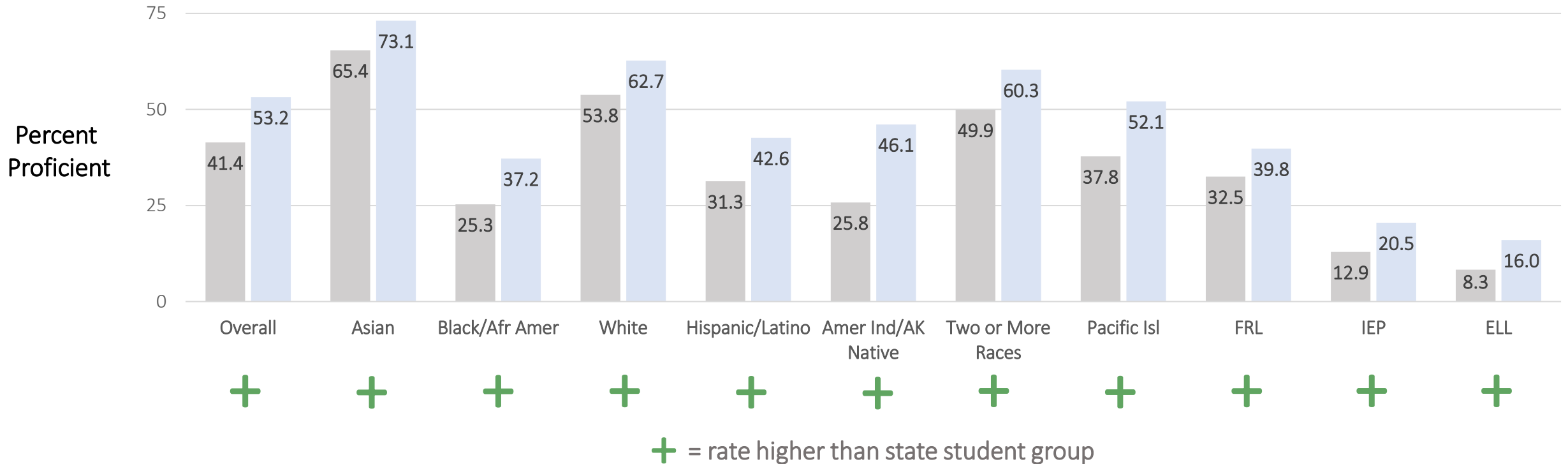
SPCSA Student Group Proficiency vs. State: SY 20-21



The NDE calculates Math and ELA proficiency rates from Smarter Balanced and ACT assessments. Rates shown below are the percent of students that are in the top two achievement levels (Proficient or Advanced).

ELA Smarter Balanced (Grades 3-8)

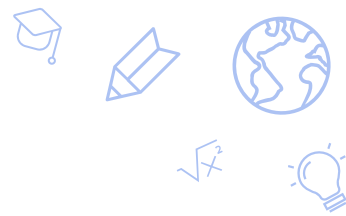
■ State ■ SPCSA



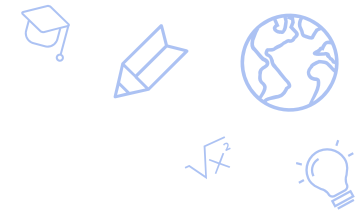
**DISCLAIMERS: NDE DISCOURAGES COMPARISON OF RESULTS.
SEE ASSESSMENT DISCLAIMERS ON PRIOR SLIDES.**

Results calculated by school level (elementary, middle, high). One "school" may contain multiple levels; e.g. Equipo has a middle (Gr6-8) and high school (Gr9-12).

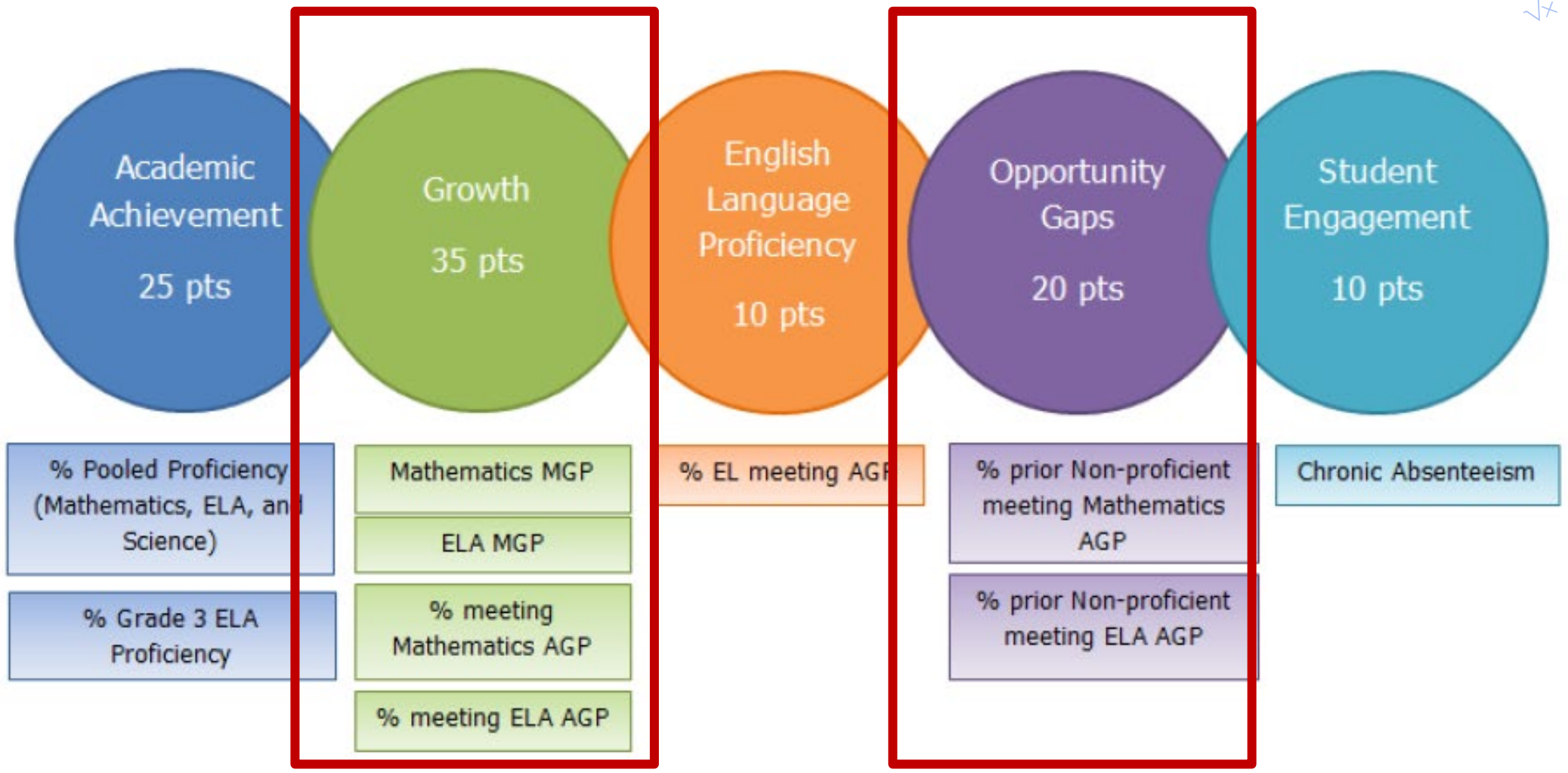
OUTLINE



- NSPF Scores
 - SPCSA Schools Meeting 3-Star Threshold: SY 18-19 (official) and 20-21 (unofficial/estimated)
 - SPCSA Score Changes: SY 18-19 (official) and 20-21 (unofficial/estimated)
- Math/ELA Proficiency
 - Overall SPCSA Proficiency, by Level: SY 18-19 (official) and 20-21 (unofficial/informational)
 - SPCSA Student Group Proficiency: SY 18-19 (official) and 20-21 (unofficial/informational)
 - SPCSA Student Group Proficiency vs. State: SY 20-21 (unofficial/informational)
- **Math/ELA Growth**
 - **SPCSA Median Growth Percentiles: SY 18-19 (official) and 20-21 (unofficial/informational)**
 - **SPCSA Meeting Growth Targets: SY 18-19 (official) and 20-21 (unofficial/informational)**



Measures



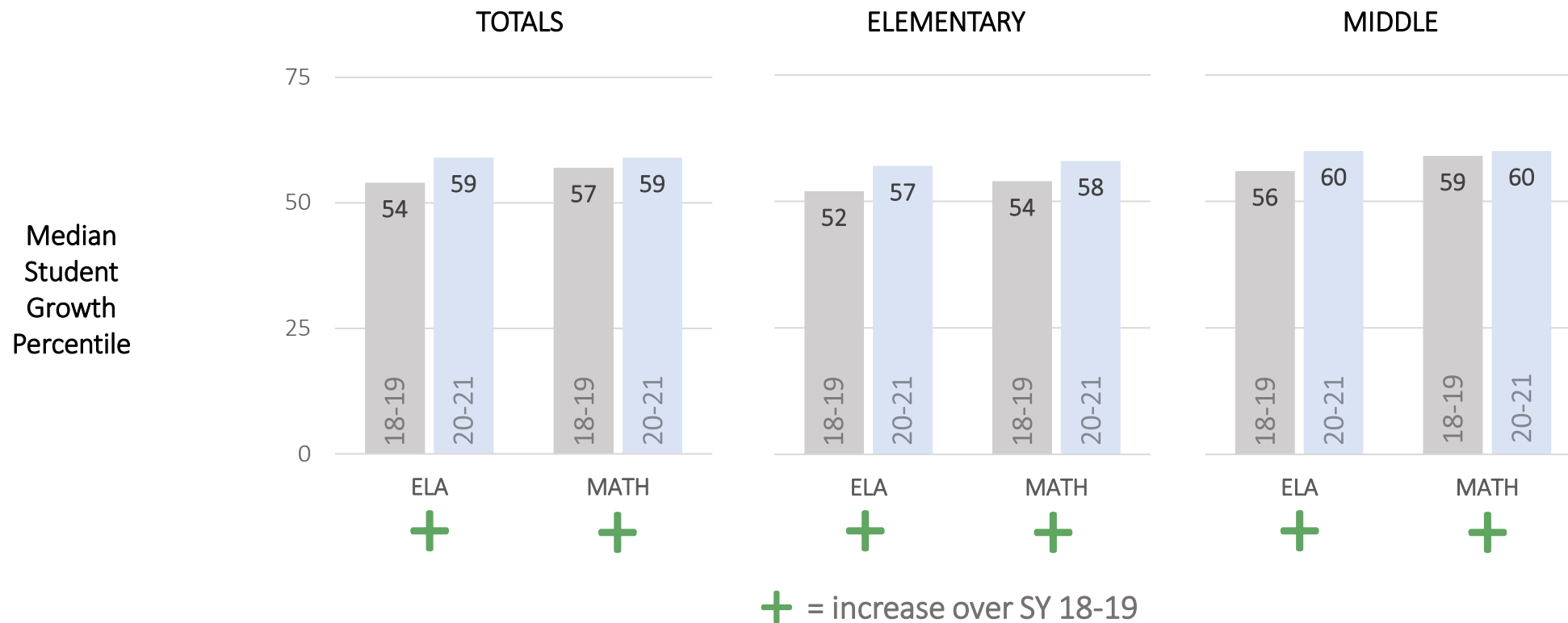
SPCSA NSPF Median Growth Percentiles: SY 18-19 vs 20-21



The NDE typically uses two consecutive years of a student’s assessment data to calculate student growth (this year they used SY 18-19 and SY 20-21 data).

The NDE calculates how much growth a student has made—compared to their peers—via a Student Growth Percentile (SGP) from 1 to 99. An SGP of 75 means a student has shown more growth than 75% of their peers.

A school Median Growth Percentile (MGP) is the median of all student SGPs.



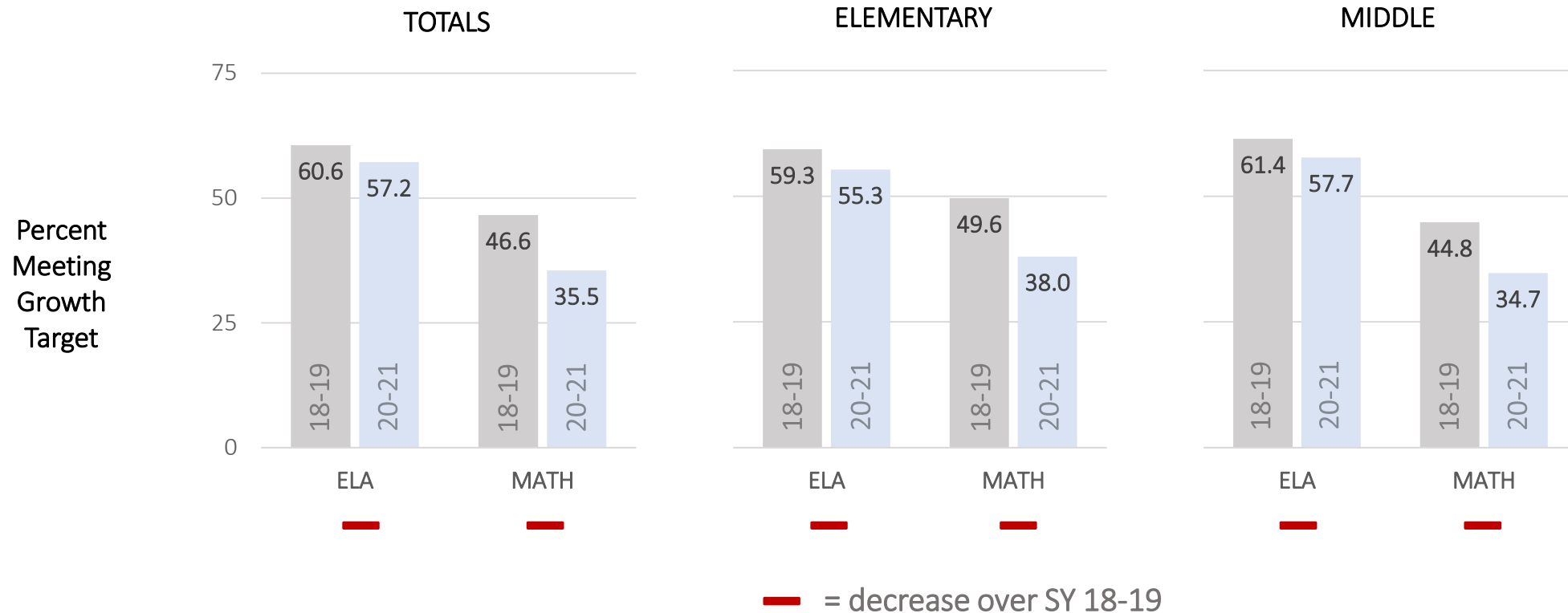
**DISCLAIMERS: NDE DISCOURAGES COMPARISON OF SY 20-21 TO SY 18-19.
SEE ASSESSMENT/GROWTH DISCLAIMERS ON PRIOR SLIDES.**

Results calculated by school level (elementary, middle, high). One “school” may contain multiple levels; e.g. Equipo has a middle (Gr6-8) and high school (Gr9-12).

SPCSA NSPF Meeting Growth Targets: SY 18-19 vs 20-21

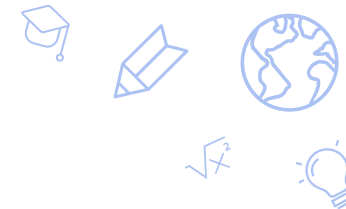


The NDE uses Adequate Growth Percentiles (AGP) to determine if a student has made enough growth to be on track to remain or become proficient. A school AGP rate is the percent of students meeting their growth target. If a student meets their target, they are on track to remain or become proficient.



**DISCLAIMERS: NDE DISCOURAGES COMPARISON OF SY 20-21 TO SY 18-19.
SEE ASSESSMENT/GROWTH DISCLAIMERS ON PRIOR SLIDES.**

Results calculated by school level (elementary, middle, high). One "school" may contain multiple levels; e.g. Equipo has a middle (Gr6-8) and high school (Gr9-12).



TAKEAWAYS

MANY DISCLAIMERS AND CAVEATS APPLY TO 20-21 SY DATA

UNOFFICIALLY.....

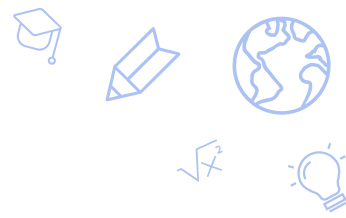
- NSPF Scores
 - The percent of SPCSA schools meeting the NSPF score for a 3-star rating in SY 20-21 was similar to SY 18-19.
 - Over 60% of SPCSA schools experienced a decrease in NSPF score.
- Math/ELA Proficiency
 - Proficiency rates decreased for elementary and middle schools but increased for high schools.
 - Proficiency rates decreased for each SPCSA student group.
 - SPCSA student groups outperformed their respective state student groups.
- Math/ELA Growth
 - SPCSA median growth in SY 20-21 increased over SY 18-19.
 - The percent of SPCSA students meeting their growth targets in SY 20-21 decreased from SY 18-19.

Thank you!

charterschools.nv.gov

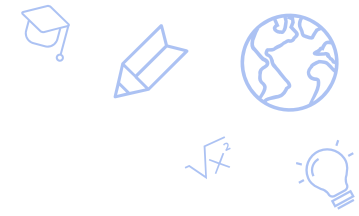


APPENDIX



The following slides contain additional academic performance data not shown in the main presentation.

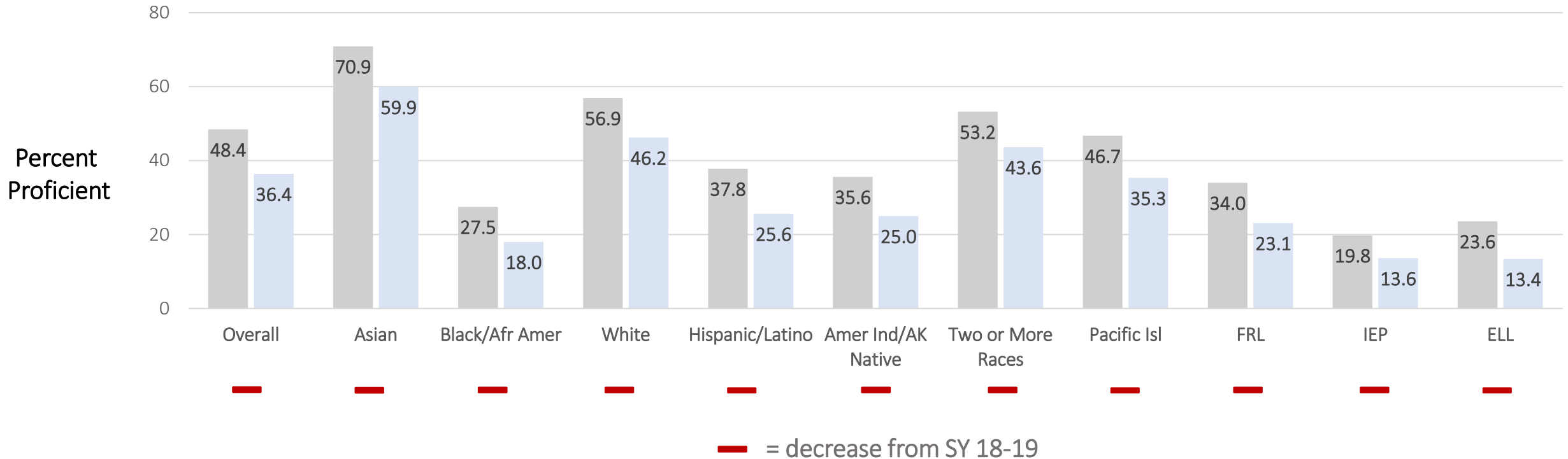
SPCSA Student Group Proficiency: SY 18-19 vs. 20-21



The NDE calculates Math and ELA proficiency rates from Smarter Balanced and ACT assessments. Rates shown below are the percent of students that are in the top two achievement levels (Proficient or Advanced).

Math Smarter Balanced (Grades 3-8)

■ 18-19 ■ 20-21



**DISCLAIMERS: NDE DISCOURAGES COMPARISON OF RESULTS.
SEE ASSESSMENT DISCLAIMERS ON PRIOR SLIDES.**

Data from <http://nevadareportcard.nv.gov/>. These proficiency rates use different rules from NSPF calculations, which is why rates may be slightly different on other slides.

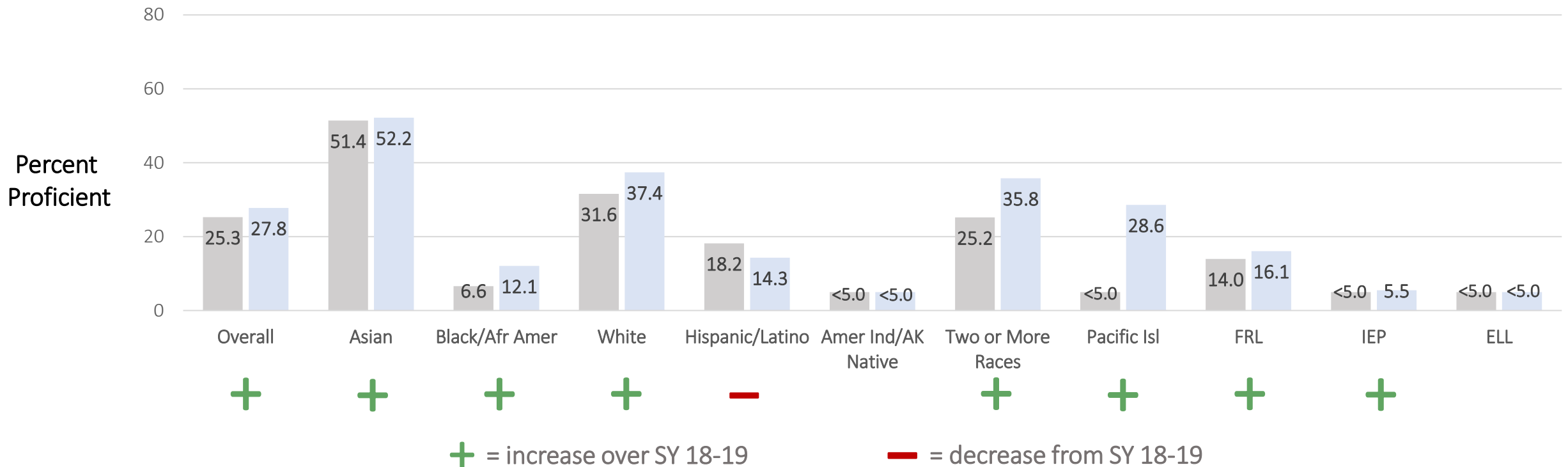
SPCSA Student Group Proficiency: SY 18-19 vs. 20-21



The NDE calculates Math and ELA proficiency rates from Smarter Balanced and ACT assessments. Rates shown below are the percent of students that are in the top two achievement levels (Proficient or Advanced).

Math ACT (Grade 11)

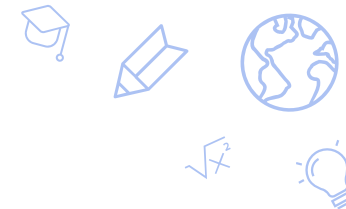
■ 18-19 ■ 20-21



**DISCLAIMERS: NDE DISCOURAGES COMPARISON OF RESULTS.
SEE ASSESSMENT DISCLAIMERS ON PRIOR SLIDES.**

Data from <http://nevadareportcard.nv.gov/>. These proficiency rates use different rules from NSPF calculations, which is why rates may be slightly different on other slides.

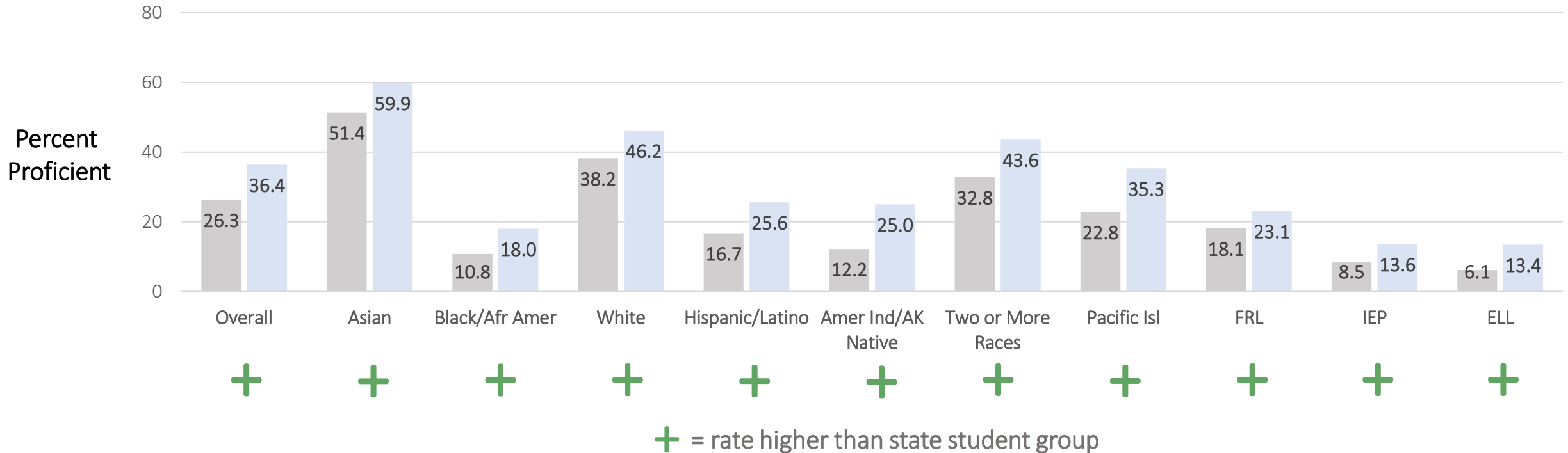
SPCSA Student Group Proficiency vs. State: SY 20-21



The NDE calculates Math and ELA proficiency rates from Smarter Balanced and ACT assessments. Rates shown below are the percent of students that are in the top two achievement levels (Proficient or Advanced).

Math Smarter Balanced (Grades 3-8)

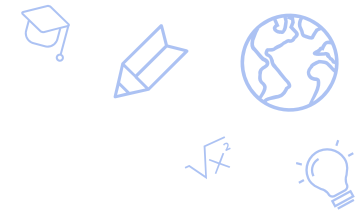
■ State ■ SPCSA



**DISCLAIMERS: NDE DISCOURAGES COMPARISON OF RESULTS.
SEE ASSESSMENT DISCLAIMERS ON PRIOR SLIDES.**

Results calculated by school level (elementary, middle, high). One "school" may contain multiple levels; e.g. Equipo has a middle (Gr6-8) and high school (Gr9-12).

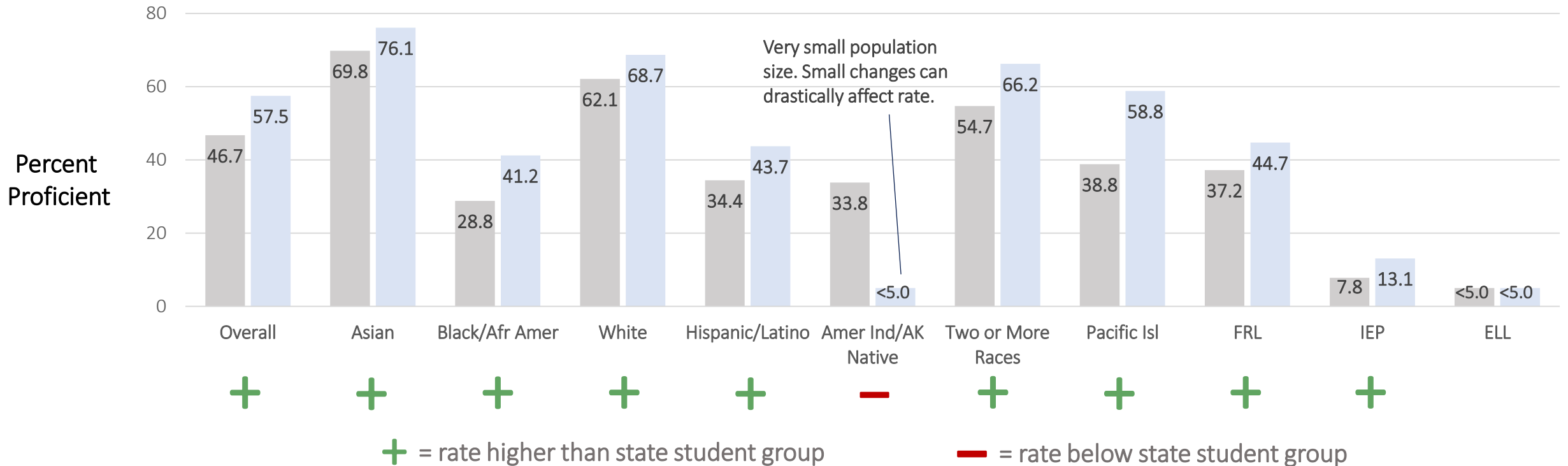
SPCSA Student Group Proficiency vs. State: SY 20-21



The NDE calculates Math and ELA proficiency rates from Smarter Balanced and ACT assessments. Rates shown below are the percent of students that are in the top two achievement levels (Proficient or Advanced).

ELA ACT (Grade 11)

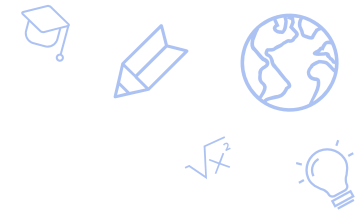
■ State ■ SPCSA



**DISCLAIMERS: NDE DISCOURAGES COMPARISON OF RESULTS.
SEE ASSESSMENT DISCLAIMERS ON PRIOR SLIDES.**

Results calculated by school level (elementary, middle, high). One "school" may contain multiple levels; e.g. Equipo has a middle (Gr6-8) and high school (Gr9-12).

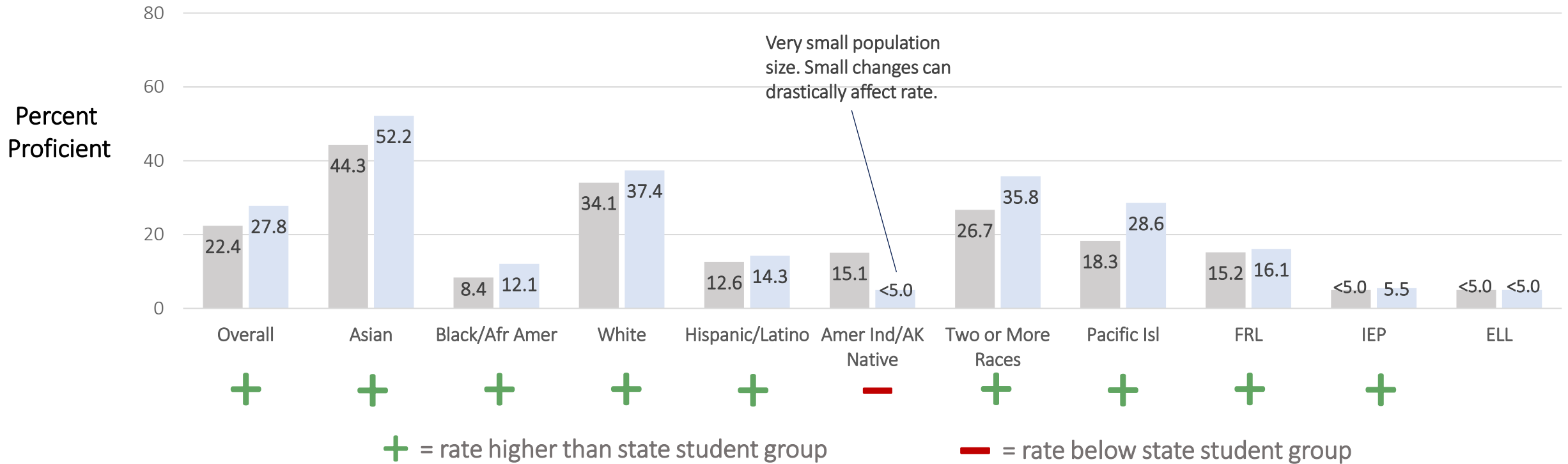
SPCSA Student Group Proficiency vs. State: SY 20-21



The NDE calculates Math and ELA proficiency rates from Smarter Balanced and ACT assessments. Rates shown below are the percent of students that are in the top two achievement levels (Proficient or Advanced).

Math ACT (Grade 11)

■ State ■ SPCSA



**DISCLAIMERS: NDE DISCOURAGES COMPARISON OF RESULTS.
SEE ASSESSMENT DISCLAIMERS ON PRIOR SLIDES.**

Results calculated by school level (elementary, middle, high). One "school" may contain multiple levels; e.g. Equipo has a middle (Gr6-8) and high school (Gr9-12).